

# ACDelco

# WIPERS

CATALOGUE: ISSUE 1.5



ACDelco® Beam Wiper Blade

ACDelco® Wiper Refills 8.5mm x 700mm (28")

## ACDELCO WIPERS CATALOGUE

### Issue 1.5 Contents

#### PRODUCT INFORMATION

Details about ACDelco wiper range

Features & benefits

Assemblies & refills specifications

Adapter selection guide

#### FITTING INSTRUCTIONS

Beam Blades

Colorado twin pack

Traditional wiper assemblies

Twin rail refills

Hybrid refills

ACDelco

BE CERTAIN.

The ACDelco logo is displayed in a bold, italicized, white sans-serif font. A red horizontal line is positioned directly beneath the letters 'CD'.

# WIPERS

CATALOGUE: ISSUE 1.5

## ABOUT ACDELCO WIPERS

### BEAM BLADE WIPER ASSEMBLIES

Beam blades represent the latest generation in wiper technology, featuring a slimline aero dynamic design which assists in providing the high quality wipe demanded by the design efficiencies of today's vehicles.

Featuring:

- A symmetrical spoiler making it suitable for either left or right hand wiper operation
- Slimline high performance design
- Universal adaptors included to suit most common wiper arms

### TRADITIONAL WIPER ASSEMBLIES

The ACDelco range of traditional Wiper Blade assemblies is designed as a direct OE replacement for vehicles fitted with this style of assembly. High quality corrosion resistant materials combined with premium natural rubber refills deliver an efficient wipe and long service life.

To provide you with the widest range of options, each blade includes a pre-installed adaptor to suit most makes and models.

### WIPER REFILLS

Featuring:

- Traditional Wiper Assemblies - Twin Rail refills in 6mm & 8mm width.
- Modern Plastic Spoiler Blades - 8.5mm wide Hybrid Refills.

All ACDelco Refills can be cut to length as required.



**ACDelco**

**BE CERTAIN.**

The ACDelco logo is displayed in a bold, italicized, white sans-serif font. A thin red horizontal line is positioned directly beneath the letters 'CD'.

# WIPERS

CATALOGUE: ISSUE 1.5

## ACDELCO WIPERS FEATURES & BENEFITS

There is an ACDelco Wiper Product for most makes and models on the road. Once you experience the quality, effectiveness and ease of installation, ACDelco will become your brand of choice for automotive wiper products. The ACDelco range includes modern Beam Blade wipers, Exact Fit Hybrid blades as well as traditional wiper blade assemblies and refills.

### BEAM BLADE WIPER ASSEMBLIES

Features & Benefits:

- Advanced rubber technology providing longer life cycle
- Symmetrical spoiler reduces win lift at high speed
- ACDelco Beam Blades can be used to update most vehicles fitted with traditional wiper assemblies
- Slim line beam design to suit modern vehicles
- Tested to meet EO specification and performance
- UV treated refills and housings
- Multi fit universal adaptors included for easy installation

### TRADITIONAL WIPER ASSEMBLIES

Features & Benefits:

- Tested to meet EO specification and performance
- Galvanized steel frame, acrylic coated for anti corrosion.
- 100% UV treated rubber element
- Universal adapters to match most vehicle arm types for easy installation
- All weather performance

The ACDelco logo is displayed in a bold, italicized, white sans-serif font. A thin red horizontal line is positioned directly beneath the letters 'CD'.

BE CERTAIN.

ACDelco

# WIPERS

CATALOGUE: ISSUE 1.5

## WIPER ASSEMBLIES & REFILLS SPECIFICATIONS

### ACDelco Wiper Assemblies & Refills

Part Number	Wiper Type	Length (mm)	Pack Qty	Refill Part Number
FS350AU	Multi Fit Beam Blade	350	1	
FS375AU	Multi Fit Beam Blade	375	1	
FS400AU	Multi Fit Beam Blade	400	1	
FS425AU	Multi Fit Beam Blade	425	1	
FS450AU	Multi Fit Beam Blade	450	1	
FS475AU	Multi Fit Beam Blade	475	1	
FS500AU	Multi Fit Beam Blade	500	1	
FS525AU	Multi Fit Beam Blade	525	1	
FS550AU	Multi Fit Beam Blade	550	1	
FS600AU	Multi Fit Beam Blade	600	1	
FS650AU	Multi Fit Beam Blade	650	1	
FS700AU	Multi Fit Beam Blade	700	1	
FS5545T	Colorado Exact Fit Pair Pack	550/450	2	
M305AU	Conventional Blade	305	1	AURT6
M350AU	Conventional Blade	350	1	AURT6
M380AU	Conventional Blade	380	1	AURT6
M400AU	Conventional Blade	400	1	AURT6
M450AU	Conventional Blade	450	1	AURT6
M500AU	Conventional Blade	500	1	AURT6
M550AU	Conventional Blade	550	1	AURT6
M600AU	Conventional Blade	600	1	AURT6
M650AU	Conventional Blade	650	1	AURT8L
M700AU	Conventional Blade	700	1	AURT8L
AURT6	Twin Rail Refills	6mm wide x 600	20pcs	
AURT8	Twin Rail Refills	8mm wide x 600	20pcs	
AURT8L	Twin Rail Refills	8mm wide x 700	10pcs	
AURH8	Hybrid Refills	8.5mm wide x 700	20pcs	

ACDelco

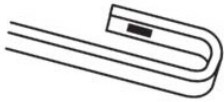



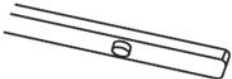

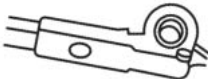


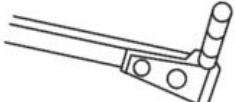




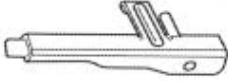








BE CERTAIN.

# ACDelco

# WIPERS

CATALOGUE: ISSUE 1.5

## ACDELCO ADAPTER SELECTION GUIDE

Adaptor Selection Guide		
Wiper Arm	Conventional Wiper	Beam Blade
9mm Hook 	 Pre-Installed on Blade	 +  V1
7mm Bayonet 	 Pre-Installed on Blade	
Female Side Pin 	 +  Pre-Installed on Blade	
Pin on Arm 	 Pre-Installed on Blade	
Side Pin Wide 		 +  V3
Side Pin Narrow 		 Pre-Installed on Blade
Pinch Tab 		 Pre-Installed on Blade
Push Button Narr 		 Pre-Installed on Blade
Push Button Wide 		 +  V2

**ACDelco**

**BE CERTAIN.**

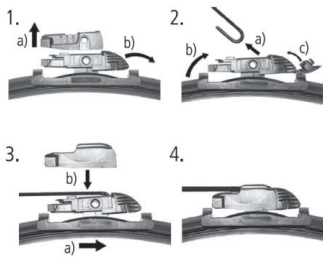
# ACDelco

# WIPERS

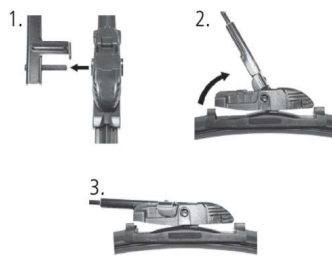
CATALOGUE: ISSUE 1.5

## FITTING INSTRUCTIONS - BEAM BLADES

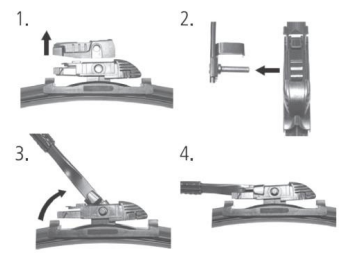
### 9MM HOOK



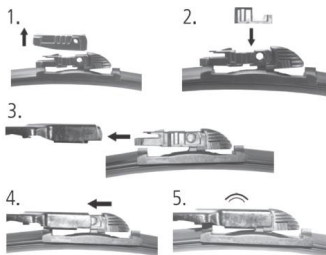
### WIDE SIDE PIN



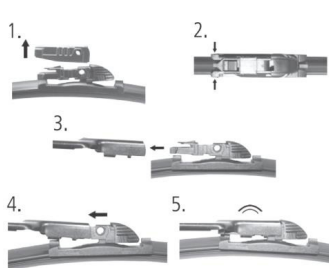
### NARROW SIDE PIN



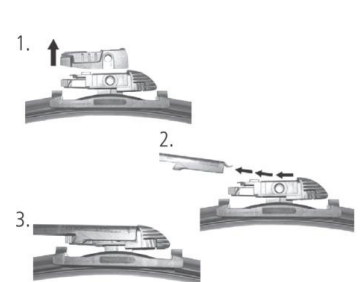
### WIDE PUSH BUTTON



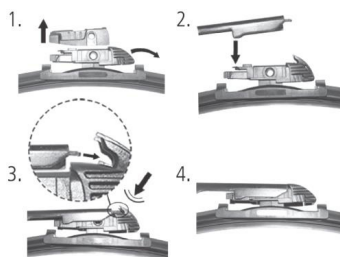
### NARROW PUSH BUTTON



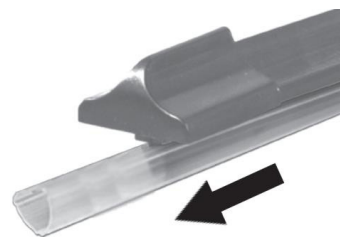
### WINGED PINCH TAB



### STRAIGHT PINCH TAB



### REMOVE RUBBER GUARD BEFORE USE



ACDelco

BE CERTAIN.

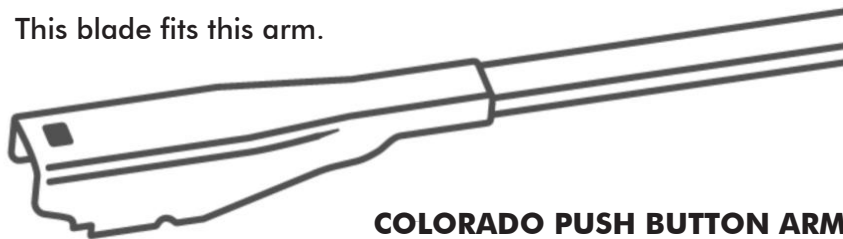
**ACDelco**

# WIPERS

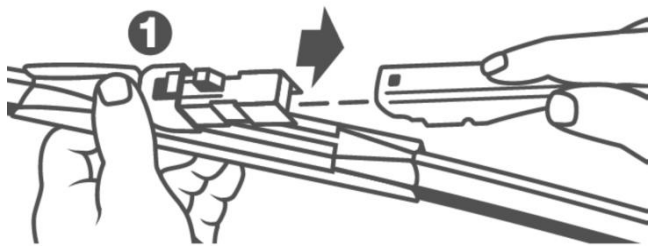
CATALOGUE: ISSUE 1.5

## FITTING INSTRUCTIONS - COLORADO (RG SERIES) TWIN PACK

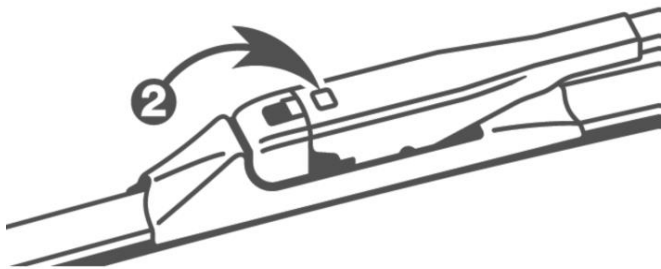
This blade fits this arm.



**COLORADO PUSH BUTTON ARM**



**STEP 1.** Holding your thumb on the front of the adaptor, PUSH the back end of the adaptor into the open end of the wiper arm.



**STEP 2.** The button on the top of the adaptor must lock into the hole in the top of the arm.

**ATTENTION:** Before use, be sure the wiper blade is LOCKED onto the wiper arm and that the plastic protector is removed from the blade rubber prior to operation.

**ACDelco**

**BE CERTAIN.**

**ACDelco**

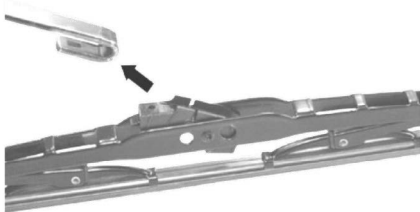
# WIPERS

CATALOGUE: ISSUE 1.5

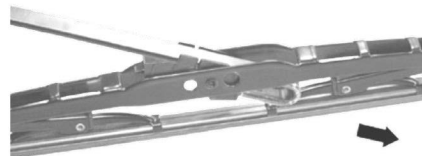
## FITTING INSTRUCTIONS - TRADITIONAL WIPER ASSEMBLIES

9x3mm / 9x4mm J HOOK

1.

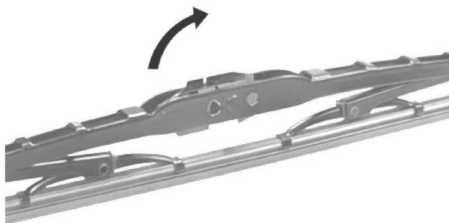


2.

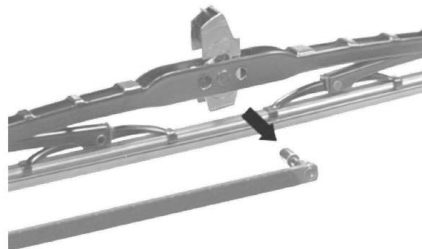


SIDE PIN

1.



2.



FEMALE SIDE PIN

1.



2.

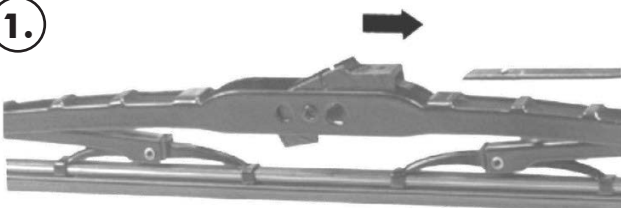


3.



7mm BAYONET

1.



**ACDelco**

BE CERTAIN.

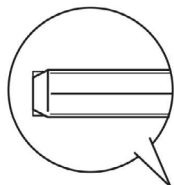


# ACDelco

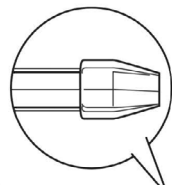
# WIPERS

CATALOGUE: ISSUE 1.5

## FITTING INSTRUCTIONS - TWIN RAIL WIPER REFILLS



**TAIL OF THE RUBBER**

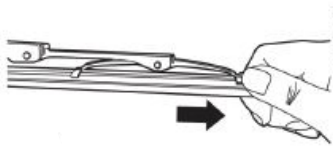


**HEAD OF THE RUBBER**



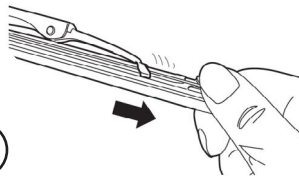
### TO REMOVE

1.



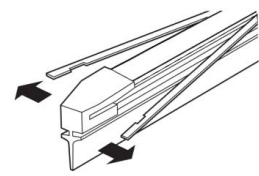
Firmly grip the head of the rubber and pull

2.



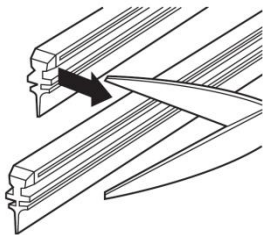
Slide it all the way to the end and remove the old refill.

3.



Remove the rails from the new refill rubber and cut to the same length as the old ones.

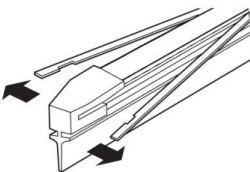
4.



Cut new refill to the same length plus 5mm as the old refill - This allows for the rubber to relax once in use and minimises the chance of the steel rails protruding past the end of the rubber.

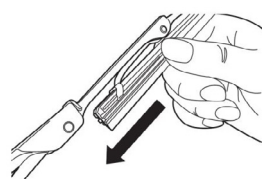
### TO INSTALL

1.



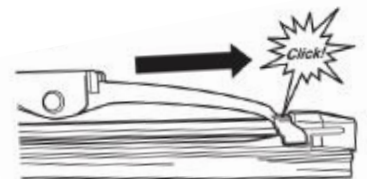
Put the rails back into the new refill rubber and snap / cut off at correct length.

2.



Refit to wiper assembly - tail of the rubber first.

3.



Ensure the refill locks into wiper assembly via the rectangular hole in the head of the rubber.

ACDelco

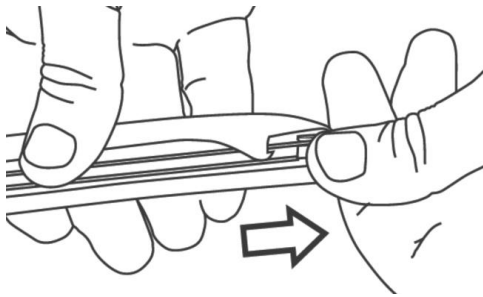
BE CERTAIN.

# ACDelco

## WIPERS

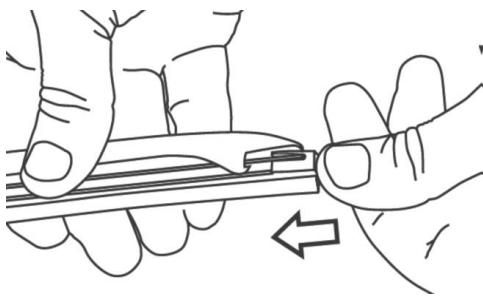
CATALOGUE: ISSUE 1.5

### FITTING INSTRUCTIONS - 8.5MM HYBRID WIPER REFILLS



1.

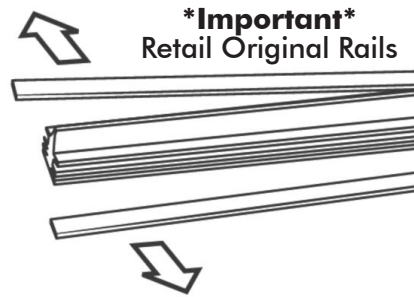
Remove the old refill. To do this, squeeze the blade refill and draw it out from the blade assembly.



3.

Now insert the new wiper refill into all the blade claws. Be sure that the refill is securely locked into the moulded recess and the end claw.

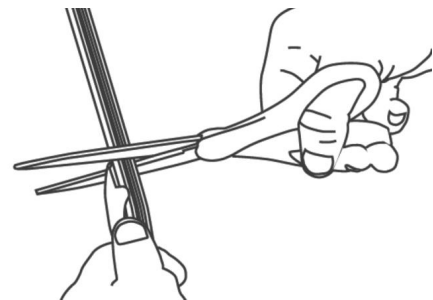
**Warning:** Failure to engage all claws under the refill rails may cause damage to the windscreen. Please check and make sure all claws are firmly locked in place under the refill rails.



2.

Remove the curved metal rails off the old refill and fit these onto the new refill blade.

Note: You must ensure the original metal rails are **RETAINED** and repositioned correctly before you install into the blade assembly. The metal rails are curved. They have offset lugs that insure the correct positioning in the refill/



4.

If the rubber is longer than the blade assembly, trim the refill down to a minimum of 10mm past the end of the curved metal rail strips.

ACDelco

BE CERTAIN.