



*advanced FLOW engineering*

*THIS IS WHAT WE DO*



*In 1999, advanced FLOW engineering was born.*

What started as a dream and a passion for automobiles led us on this exciting journey. In the beginning, we had a vision for what an air filter should be and what you see is the result of that vision. From the filter media to the urethane frames to the seal design, no stone was left unturned. Our attention to detail is evident in our filters, and in every product we design and produce. Now in our 20th year, that same approach is carried through all our product lines. Our Cold Air Intake Systems, Exhaust Systems, and other product lines are second to none, all built in our 160,000+ sq. ft. facility in Corona, California, and we continue to grow. Exciting and recent acquisitions have expanded our portfolio into the Suspension and Tuning markets, allowing us to provide even more solutions and high-quality products for true automotive enthusiasts.

Our growth and continued success would not be possible without the right team of people. We share the same dream, vision, and passion for performance. This united front is what allows us to create such exciting and compelling products. From our design and engineering teams who create the product, to the manufacturing staff who build it, to all our support staff who manage the purchasing, sales, marketing, customer service, and accounting — everyone plays a key role in the success of aFe.

Thank you to our customers for your continued support of aFe and for celebrating with us in our 20th year in the automotive after-market. This, our 20th year catalog shows how far we've come and includes our full product line for you to see. This is what we do.

*SN<sup>2</sup>*

Shahriar "Nick" Niakan  
President & CEO

# CONTENTS:

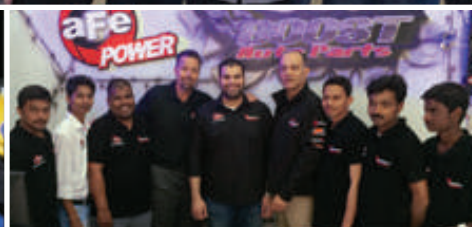
Click Title to go to Page

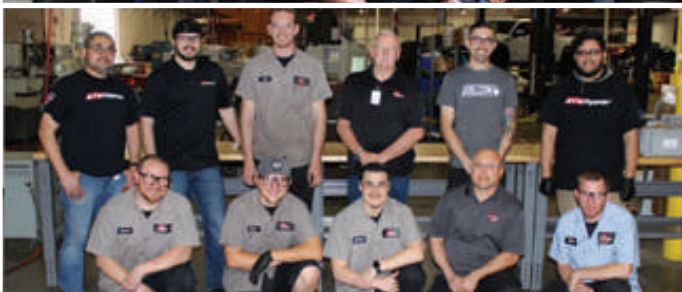
Who We Are .....	2	We Build It: Electronic Modules .....	18
Innovate or Die .....	4	Platform: American Muscle .....	20
Proving Grounds .....	6	Platform: Gas Truck .....	22
We Build It: Performance Air Filters ....	8	Platform: Jeep We Do It .....	24
We Build It: Cold Air Intakes .....	10	Platform: Sport Compact .....	26
We Build It: Exhaust Systems .....	12	Platform: Diesel Power .....	28
We Build It: Suspension & Control .....	14	Platform: Eurotrip .....	30
We Build It: Serious Power .....	16	Online Presence: Go to the Source ....	32





# WHO WE ARE







# INNOVATE OR DIE

## DRIVEN BY **RESEARCH & DEVELOPMENT**

*Superior products are the foundation of aFe POWER.*

*We are in the business to create the most exciting,  
highly engineered products in the world.*

*Our products excel in every way — the installation,  
the fit, and the performance are benchmarks in  
the automotive after-market industry.*

*When you bolt on an aFe POWER product, you get  
more than just performance — you get perfection.*

*With full-time teams of engineers dedicated to  
specific product groups, our products are designed  
to fit a specific vehicle year, make, and model range.*

*Our extensive research and development programs  
put products to the test on our in-house dyno as well  
as on the street, the track, and off-road, to ensure  
performance improvements over stock.*







# PROVING GROUNDS

*"IT DOESN'T LEAVE HERE UNTIL  
IT'S PROVEN TO MAKE POWER."*

*Field tested to ensure performance improvements*



visit:





DYNOJET RESEARCH

CF: SAE



Dyno-proven Power

13.23 Air/Fuel 13.22 Air/Fuel

THE INFORMATION CONTAINED IN THIS DRAWING IS THE SOLE PROPERTY OF ADVANCED FLOW ENGINEERING, INC. ANY REPRODUCTION IN PART OR IN WHOLE WITHOUT THE WRITTEN PERMISSION OF ADVANCED FLOW ENGINEERING, INC. IS PROHIBITED.



Learn More ▶

# PERFORMANCE AIR FILTERS

## FLOW IS OUR MIDDLE NAME

Back in 1999, we set out to provide the ultimate air filter for OE replacement, racing, off-road, and universal applications. Today, our filters are the heart and soul of our industry-leading cold air intake systems.

Advanced FLOW engineering, inc.  
TO BE LOCATED HERE  
FONT HEIGHT: 253 (6.43) (28 POINT)  
MINIMUM DEPTH: 010 (2.5)

D4-003842A  
FOR 24-91092

PART NUMBER TO BE APPROXIMATELY LOCATED HERE

[35.37]  
2X R1.393

[261.52]  
2X R10.296

[266.6]  
2X R10.50

[226.6]  
9.00

[280.57]  
2X R11.046

REVERSE LOGO TO BE APPROXIMATELY LOCATED HERE  
MINIMUM DEPTH: 010 (2.5)

[7.94]  
0.313  
[3.18]  
2X 0.125



SECTION A-A

5. DEBURR ALL OUTSIDE EDGES

4. TEXT FONT HEMI HEAD 426

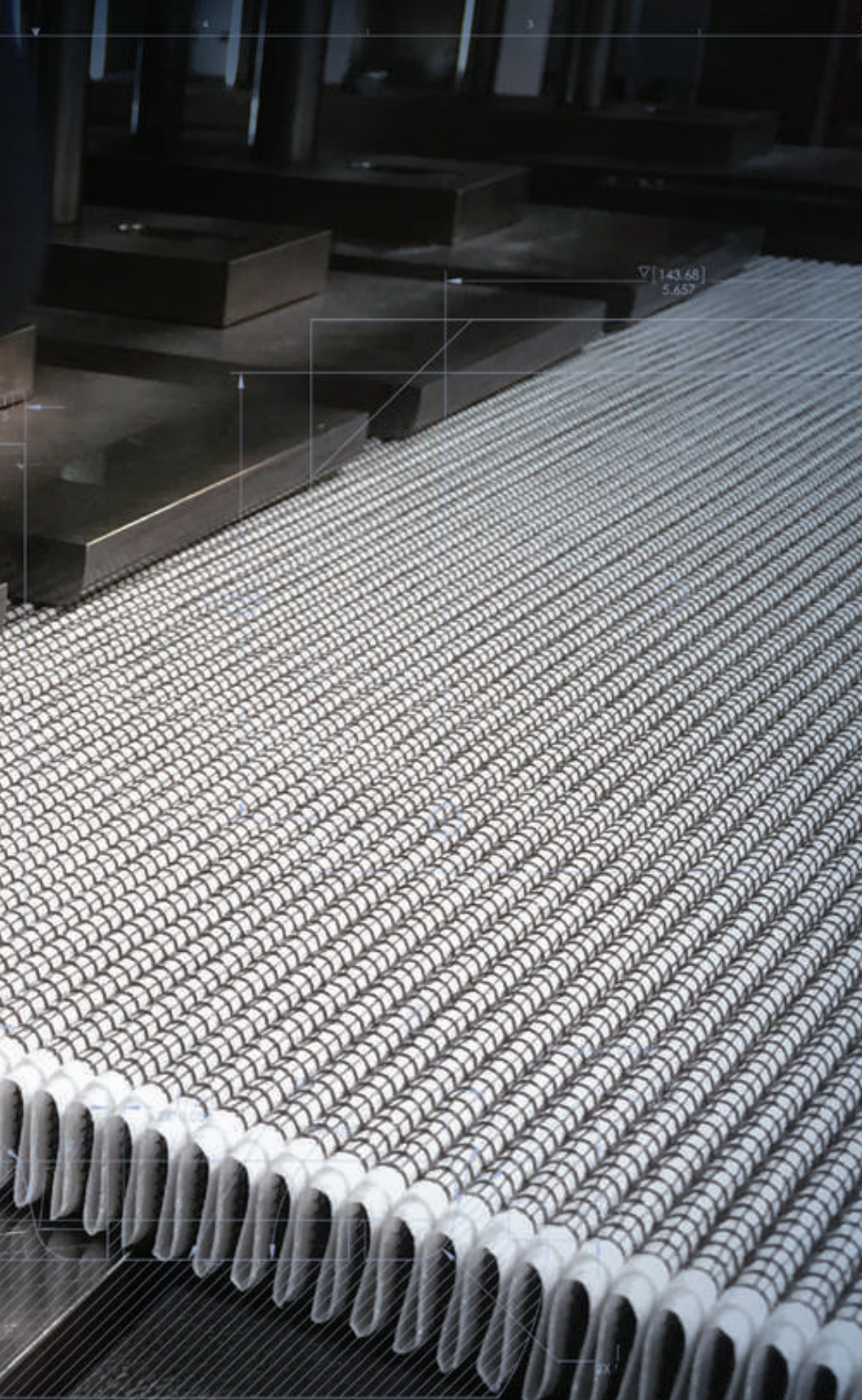
3. METRIC TOLERANCES: X.±2.5, X.X±0.8, X.XX±0.25

2. ∇ CRITICAL DIMENSIONS ±0.005(0.13)

1. REFER TO SOLID FILE FOR DIMENSIONS NOT SHOWN ±0.010(0.25) TOLERANCE

NOTES:





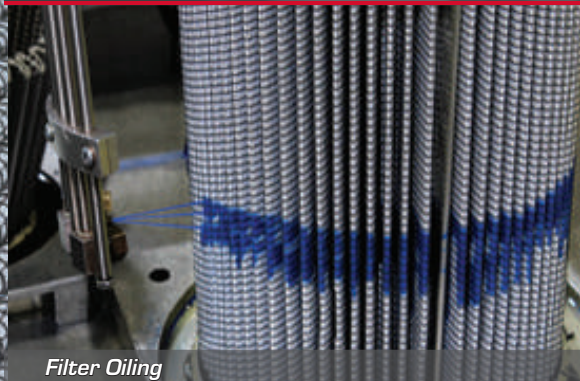
▽ [143.68]  
5.657



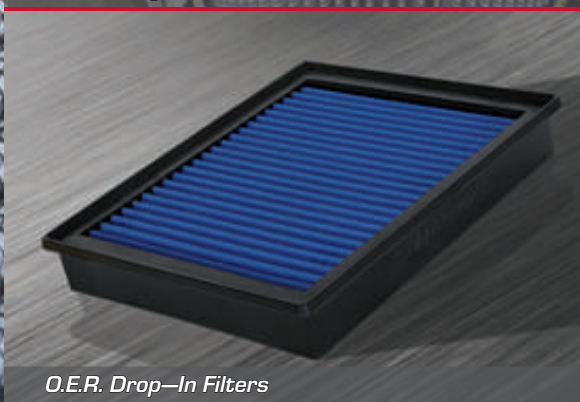
*Pleating*



*Innovative Production*



*Filter Oiling*

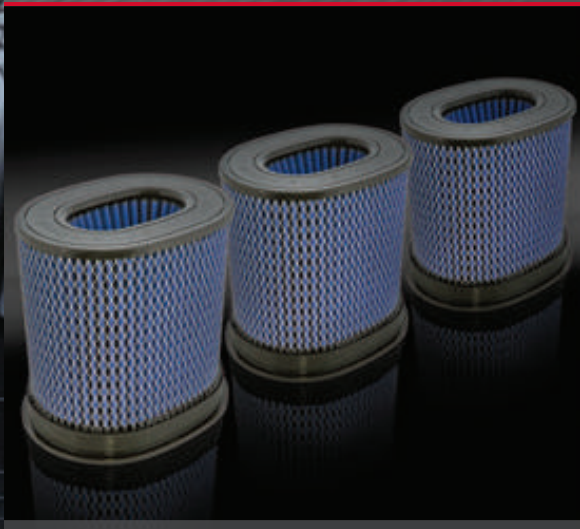


*O.E.R. Drop-In Filters*



DETAIL B  
SCALE 4:1

REV	BY	DATE
01	10/10/20	
02		
03		
04		
05		
06		
07		
08		
09		
10		



*Massive 1,000 cfm Reinforced Intake Filters*



# COLD AIR INTAKES

FLOW, **POWER** & STYLE

*With innovative design processes and dyno-proven performance improvements on all of our systems, we're known for our cold air intakes — and for good reason... ..we make **POWER!***

STAFF  
SI



[◀ Back To Table Of Contents](#)



*Precision Scanning*



*C.A.D. Development*



*3D Printed Prototyping*



 Play Video

*In-House Roto-Molding*



*Innovative and Patented Designs*



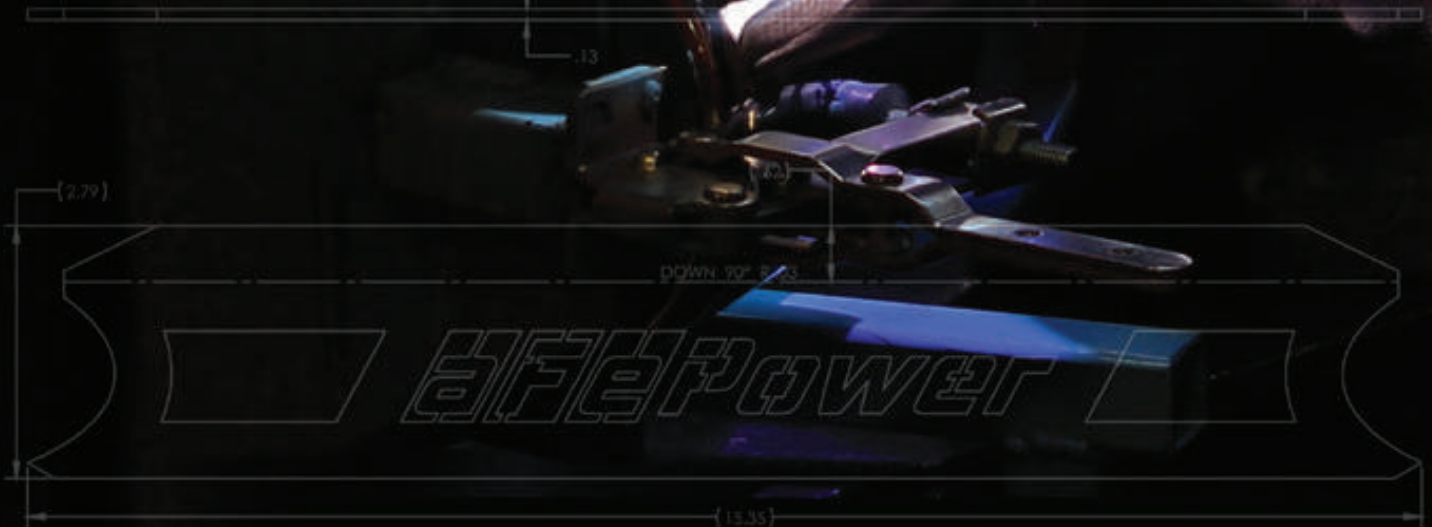


Learn  
More ▶

# EXHAUST SYSTEMS

**HANDCRAFTED IN THE U.S.A.**

*Performance, sound, and style that demand a presence —  
our exhaust systems are a direct reflection of our  
commitment to delivering quality products.*





*Fitting & Prototyping*



*Quality Materials*



*Mandrel Bent for Unrestricted Flow*



*Handcrafted by Master Welders*



*Style, Sound and POWER!*



# SUSPENSION & CONTROL

## COMMAND THE ROAD

*It's about how it performs and feels behind the wheel.*

*Our suspension products deliver excitement on-road, off-road, and on the track.*



3 CRITICAL DIMENSIONS DENOTED WITH  $\nabla$

2 METRIC TOLERANCES: X.  $\pm 2.5$ , X.X  $\pm 0.8$ , X.XX  $\pm 0.25$

1 DEBURR AND BREAK SHARP EDGES

NOTES:

MASS:	0.3 lbs		
TOTAL SURF AREA	7.8 sq in		
VOLUME	cu in	NEXT ASSY	USED ON
PART ATTRIBUTES		APPLICATION	

FINISH	NC
MATERIAL	Plain Car
FINISH	NC
MASS	0.3 lbs
TOTAL SURF AREA	7.8 sq in
VOLUME	cu in
MASS	0.3 lbs
TOTAL SURF AREA	7.8 sq in
VOLUME	cu in
MASS	0.3 lbs
TOTAL SURF AREA	7.8 sq in
VOLUME	cu in

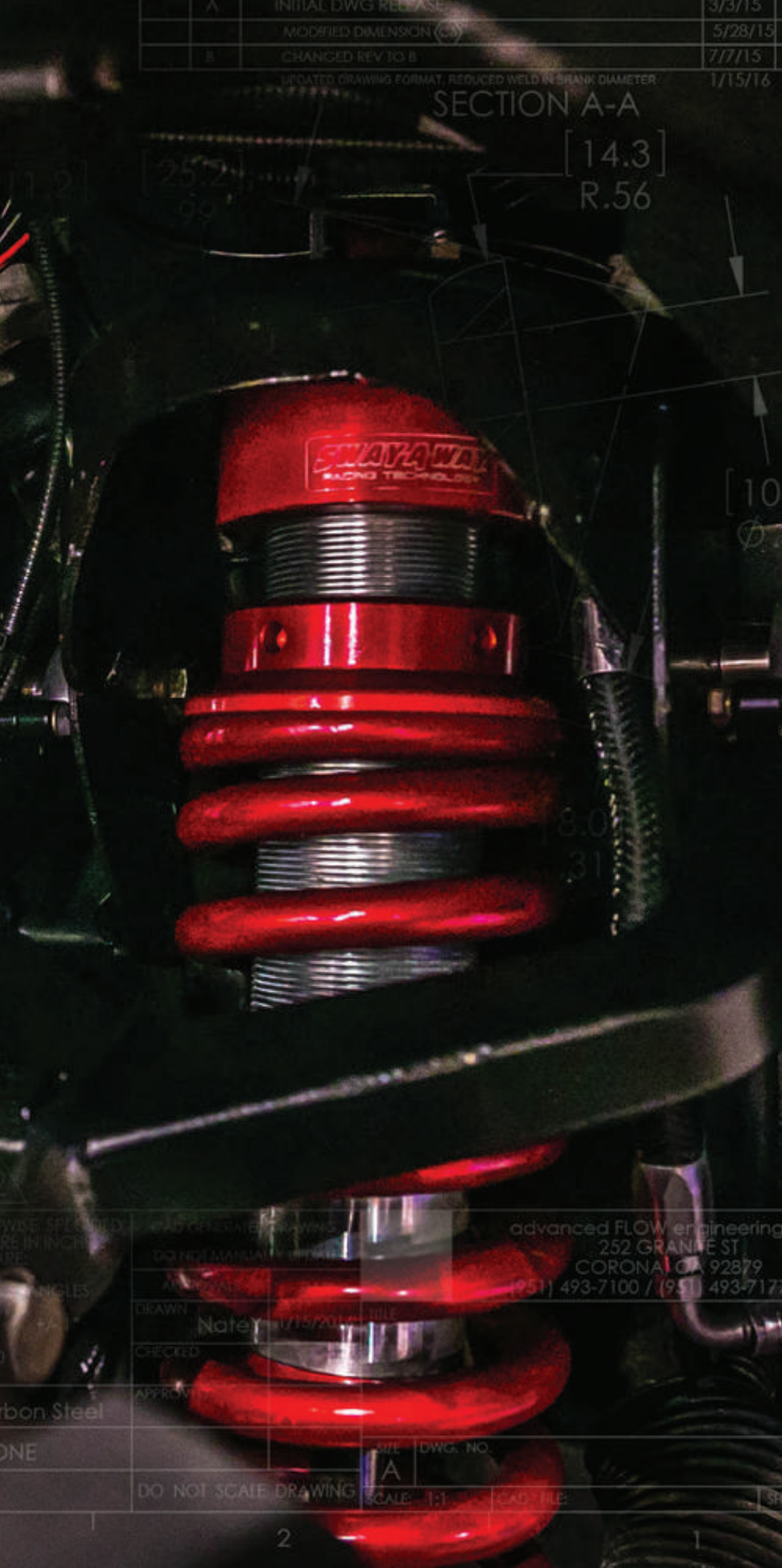


A	INITIAL DWG RELEASE	3/3/15
	MODIFIED DIMENSION (C)	5/28/15
B	CHANGED REV TO B	7/7/15
	UPDATED DRAWING FORMAT, REDUCED WELD IN BRANK DIAMETER	1/15/16

SECTION A-A

[14.3]  
R.56

25.2  
99



Expert-tuned



Sway Bars and Springs

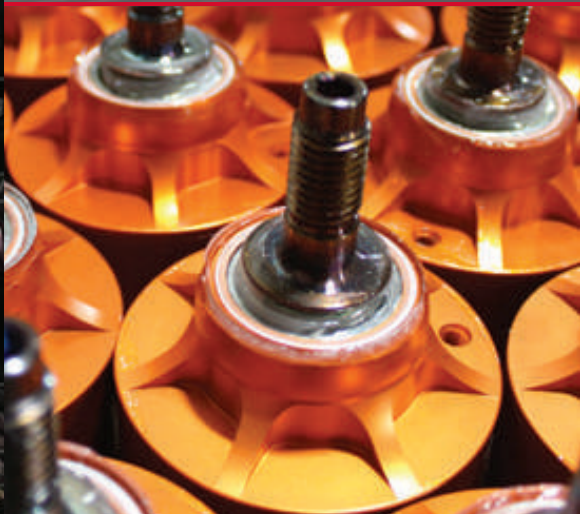


Truck Shocks



Play Video

Street and Track Performance



Ball on Axis Mounts

ADVANCED FLOW engineering	252 GRANITE ST	CORONA, CA 92879	(951) 493-7100 / (951) 493-7177
DRAWN	Nate	1/15/2016	TITLE
CHECKED			
APPROVED			
Carbon Steel			
ONE			
DO NOT SCALE DRAWING	SCALE: 1:1	CAD FILE	SF



# SERIOUS POWER

## **METICULOUSLY MADE**

*From turbochargers and cooling systems to protection products, our engineers are experts in our trade. Our attention to detail far surpasses the industry standard.*





Fuel Systems



Radiators & Hose Kits



Intake & Exhaust Manifolds



Intercoolers & Tubes



Differential Covers & Oil/Trans Pans



# ELECTRONIC MODULES

## HORSEPOWER BOOST

Up your power and haul heavy loads with custom tunes and plug-and-play power modules. Use our in-depth displays and data loggers to monitor your vehicle's health and keep it operating at optimal performance levels.



Advanced Gauge Display (AGD) Monitor



Bluetooth®-Enabled Scorchers® BLUE



Sprint Booster — Increase Accelerator Response



Scorchers® BLUE — Bluetooth® Power Module



Scorchers® PRO — OBD II Tuner



Shift Logic® — Reduces Transmission Slippage



Brake Logic™ — Increases Engine Braking



# AMERICAN MUSCLE

## **HORSEPOWER** RUMBLE

*American muscle is American pride. With our performance electronics, induction, exhaust, and tuned suspension products, we offer more power and control for your late-model muscle car, all proudly developed and tested in the USA.*



ower

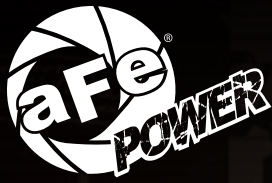
SRT

PRE-STAGE  
STAGE

888888

888888

Copyright © 2011 Chrysler Group LLC



# GAS TRUCK

## FORM MEETS **FUNCTION**

*It's not just a pickup. For work or play, your truck is your life. Whether it's a weekend trip off-roading, hauling, towing on the job, or driving your daily commute, we offer all the performance upgrades for your truck lifestyle.*



**SWAY-A**  
RACING TECHNOLOGY





Raptor

FORD

WAY  
TOLOGY



# JEEP WE DO IT

## GO ANYWHERE

*Off-roading is more than just a hobby — it's a way of life.*

*That's why we develop parts for everything from daily drivers*

*to those made for the most extreme off-road adventures.*





UPRIGHT

Jeep  
3.6L Pentastar  
4x4

Jeep

Fe  
POWER

e  
POWER

ELITE

AF MC



# SPORT COMPACT

## TAKEDA **POWER**

*It started as an aggressive debut into the Honda market, but this product has expanded to other sport compact makes.*

*We are dedicated to progressing the legendary performance heritage of the import world.*







# DIESEL POWER

IT'S ALL ABOUT **THE TORQUE**

*Just like you, we're not just looking for  
impressive numbers; rather, it's a quest  
for drivability and peak torque  
when you need it most.*

*We create top-of-the-line,  
dyno-proven products  
to up your diesel's  
already-impressive  
performance output.*





**afe Power**

**Power**

**afe**  
**Power**



# EUROTRIP

## *POWER REFINED*

*"Power Refined" is a philosophy that drives us to deliver quality engineering blended with innovative power and suspension products for the like-minded enthusiast who's pursuing limitless freedom, technology, and style.*











**Dodge / Ram**

**GM**

**Ford**

**Nissan**

**2500/3500**

13-18 Cummins 6.7L

10-12 Cummins 6.7L

D75-08 Cummins 6.7L

D3-07 Cummins 5.9L

**1500**

14-18 EcoDiesel 3.0L

*Search by Vehicle Platform*

**Momentum Cold Air Intake And Scooper Tuning Module Package**

Find out if it's the only tuning for your Power Stroke 6.7L in a Momentum 300 hp or a Scooper 300 hp. This package is a cost-effective way to get the most out of your 6.7L. It includes a Momentum Cold Air Intake and Scooper Tuning Module. Together they provide increased horsepower and torque. Scooper and the Scooper Module. Designed to work together to deliver an additional 12 hp or 30 lbs. of torque with an added 146% increase in peak breathing system performance. There's no other like it!

- Includes 12" Cold Air Intake
- Includes Scooper Tuning Module
- 12" Scooper, Scooper Kit
- Scooper Tuning Module

**+146%** FLOW INCREASE

**+12 HP** HORSEPOWER

**+30 Lbs. x Ft.** TORQUE MAX GAINS



*Detailed Product Descriptions*



*Verified Performance Numbers & Dyno Charts*

**WHICH STAGE-2 IS RIGHT FOR YOU?**



DESIGN	STAGE-2 AIR FILTER MEDIA	STAGE-2 AIR FILTER MEDIA	STAGE-2 AIR FILTER MEDIA
DESIGN	DESIGN	DESIGN	DESIGN
DESIGN	DESIGN	DESIGN	DESIGN
DESIGN	DESIGN	DESIGN	DESIGN
DESIGN	DESIGN	DESIGN	DESIGN

*Educational Buyer's Guides*

**Quantum Cold Air Intake System w/ Pro SR Filter Media**



**+146%** FLOW INCREASE

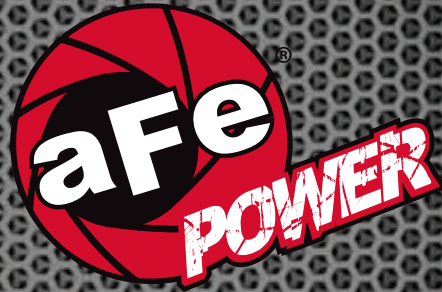
**+12 HP** HORSEPOWER

**+30 Lbs. x Ft.** TORQUE MAX GAINS

Call today to get your free copy of the Quantum Cold Air Intake System Buyer's Guide. **800-4-A-FE**

For more information, call **801-400-1758**

*All You Need for Performance & Power*



When it comes to quality performance engine parts, aFe is the brand you can depend on.