

# AIRRAID

PERFORMANCE FILTERS



PERFORMANCE PRODUCTS CATALOG



**THE COMPANY**

Call it the power principle: cold air is denser than hot air, and allowing an engine to breathe in cool outside air without restrictions can result in more power and better efficiency. This is the principle behind AIRAID cold air intake systems. Founded in 1997, AIRAID® is a leading manufacturer of cold air intake systems, premium performance air filters, and PowerAid® throttle body spacers for domestic and import cars, trucks, and SUVs.

Each AIRAID® product line is the result of exhaustive research and development. Our in-house engineering team consists of both mechanical and industrial design engineers using advanced 3-D CAD modeling equipment to produce products that are designed to make more power right out of the box. A portable 3-D scanner and rapid prototyping machine allows AIRAID® to test new product on our in-house Superflow flow bench and verify the high grade fit, finish, and style that AIRAID® customers demand. Our intakes are then tested on our all-wheel-drive Mustang chassis dynamometer to produce real-world performance numbers.

AIRAID® premium filters are produced in-house using high quality materials and highly specialized manufacturing equipment



*The Performance Intake Company*

to ensure a premium level of quality control. This is just one of many reasons why AIRAID® filters are backed by our “no hassle” lifetime warranty. All of AIRAID®’s product lines are proudly manufactured in the USA.

<i>Intake System Types</i>	<i>2-3</i>	<i>Modular Intake Tubes</i>	<i>30-31</i>
<i>Filtration - OILED &amp; SynthaMax® DRY</i>	<i>4-5</i>	<i>Carbon Fiber Components</i>	<i>32-33</i>
<i>Diesel Performance</i>	<i>6-7</i>	<i>U-Build-It Components</i>	<i>34-41</i>
<i>Gas Truck Intake Systems</i>	<i>8-9</i>	<i>Specialty Filters/Pre-Filters</i>	<i>42-45</i>
<i>Muscle Car Intake Systems</i>	<i>10-11</i>	<i>UTV Intake Systems</i>	<i>46-49</i>
<i>Jeep Intake Systems</i>	<i>12-13</i>	<i>PowerAid® Throttle Body Spacers</i>	<i>50-55</i>
<i>Performance Intakes</i>	<i>14-25</i>	<i>ECONOAID® Throttle Body Boosters</i>	<i>56-59</i>
<i>Intake Replacement Filter Chart</i>	<i>26-27</i>	<i>Drop-In Replacement Filters</i>	<i>60-83</i>
<i>AIRRAID® Jr. Kits</i>	<i>28-29</i>	<i>Cleaning Kits / Customer Service</i>	<i>84-85</i>

**FOOTNOTES:**

Some vehicles have two or more engines that have the same engine size and may not use the same filters. If this is the case, the VIN number is the best way to determine the proper replacement filter for you vehicle. The VIN number should be visible on the dash of your car. Use the following guide to properly identify the VIN number digit for your application (#-represents the code location):

**Other useful abbreviation codes:**

- 2WD Fits two wheel drive vehicles.
- 4WD Fits four-wheel drive vehicles.
- All The part fits all vehicles for the entered year, make, model, and engine size.
- Bbl Denotes the carburetor configuration. Example 2bbl is a two barrel carburetor.
- DOHC Denotes a dual overhead cam engine.
- exc. Except
- MAF Mass Airflow Sensor
- MEX Mexico
- OHC Denotes an overhead cam engine.
- SOHC Denotes a single overhead cam engine.
- V Valve, for example 32v indicates the part is for a 32-valve vehicle.

**VIN Code Locations:**

Vehicles manufactured by Chrysler, Ford, and GM:  
1972-80 – Use the fifth VIN character  
1X11#XXXXXXXX

1981-04 – Use the eighth VIN character  
XX1XX11#1CC000000

Vehicles manufactured by AMC/Eagle (except Jeep):  
1972-80 – Use the seventh VIN character  
X1X111#000000

1981-88 – Use the fourth VIN character  
1XX#X1111XX000000

1989-98 – Use the eighth VIN character  
1X1XX11#1XX000000

Vehicles manufactured by Jeep:  
1972-74 – (up to SN #100000)  
Use the eighth VIN character  
X1X111X#00000

1974-80 – (from SN #100001) –  
Use the seventh VIN character  
X1X111#100001

1981-88 – Use the fourth VIN character  
XX#X1111X000000

1989-06 – Use the eighth VIN character  
X1XX11#1XX000000

All trademarks, registered trademarks, service marks, trade names, trade dress, product names and logos appearing herein are the property of their respective owners. AIRAID® is a registered trademark in the United States and/or other countries. © 2015/2016 Airaid. All rights reserved.

# CAD

## COLD AIR DAM

### COLD AIR DAM INTAKE SYSTEMS

It is a proven scientific fact that cold air is denser than hot air, which means that an engine breathing cold air is probably going to make more power than the identical engine breathing hot air. Why? Because the denser air charge provides more oxygen molecules for more complete combustion of the atomized fuel in the cylinders, and more combustion means more power. The quest for cold air is what drives the AIRAID® Cold Air Dam intakes.

The CAD Intakes retain the stock filter location but give the stock intake system a big boost with the addition of a huge air inlet that helps provides a steady, free-flowing supply of cold air. This is done via Cold Air Dam panels, which mount in the factory air box location and utilize any factory cold air inlet ducts that are present, while adding additional cold air passages to the filter. These panels also help keep the filter isolated from the hot engine compartment air by sealing to the underside of the hood via blade-



2009-2013 CHEVROLET SILVERADO 1500  
4.3L, V8 4.8L, V8 5.3L, V8 6.0L, V8 6.2L

style weatherstripping. Each AIRAID® Cold Air Dam intake is designed specifically for each vehicle application and offers a simple, trouble-free installation using common hand tools. Like the rest of the AIRAID® systems, the CAD Intakes include all the necessary installation hardware and easy-to-understand instructions written with the do-it-yourselfer in mind.



Products listed with an EO number are legal for use in all 50 States. Products without an EO number are not legal for use on any pollution-controlled motor vehicle registered for street use in the state of California or in other states that have adopted California emissions standards. Please visit our website for the most up to date information on the emissions status of individual products.

# AIRAID MXP SERIES

### GAINS WITH AIRAID® MXP

The AIRAID® MXP series is our premium line of cold air intake systems designed for high performance gas and diesel applications. The MXP intakes start with a new one piece rotomolded air box that addresses the shortcomings of the restrictive factory design. Then AIRAID® adds a new air intake tube constructed of cross-linked, high-density polyethylene that is designed using extensive computer modeling to maintain proper mass air flow readings and calibration. They also frequently have a built-in velocity stack, which further promotes airflow. What this all means is a simple-to-install system that was designed using extremely sophisticated technology to increase airflow while maintaining proper air / fuel ratios, therefore eliminating the need



2005-2009 FORD MUSTANG V8 4.6L

for re-calibration once installation is complete. Just bolt it on and go! Like any other AIRAID® intake system, the MXP includes an AIRAID® premium filter that is sized to improve power and efficiency.

The AIRAID® MXP series combines high-quality components, excellent fit and finish, and aggressive styling. Whether the purpose is to simply eliminate factory restrictions or improve upon other performance modifications, trust the AIRAID® MXP series to get the job done.

### A CLASSIC DESIGN

AIRAID® classic intakes add a new spin to vehicles with limited air flow to the original filter location. Our mandrel-bent, powder-coated inlet tube moves the air inlet to a better location increasing air flow at the drop of the throttle. The exclusive filter adapter sends air directly into the intake system, providing increased horsepower over the stock air box. The 360-degree conical AIRAID® premium filter is washable and reusable; it is less restrictive than traditional paper and assures superior filtration.

For off-road enthusiasts, some kits include a specially designed splash shield. AIRAID® classic intakes are available for a variety of vehicle makes and models, offering a cold, dense air charge for improved horsepower, torque and fuel efficiency.



Products listed with an EO number are legal for use in all 50 States. Products without an EO number are not legal for use on any pollution-controlled motor vehicle registered for street use in the state of California or in other states that have adopted California emissions standards. Please visit our website for the most up to date information on the emissions status of individual products.



# FILTRATION TECHNOLOGY



**WHICH FILTER IS BEST FOR YOU?**

**Dusty Dry Conditions**  
- Oiled is recommended

**Everyday Street Driving**  
- Non-Oiled is recommended

**Oiled or Dry, both types offer free flowing protection and filtration for outstanding performance.**

**FLOWING RESULTS**

AIRAIID® revolutionized the automotive aftermarket in 2002 with the introduction of our SynthaFlow® composite material. This material, which AIRAIID® pioneered after exhaustive research and development, remains the standard by which other filters are judged today. AIRAIID® premium filters are built using a combination of precision equipment and quality materials, along with the attention to detail that only fine hand craftsmanship can provide. We start with multiple layers of cotton gauze and then add our own proprietary blend of synthetic materials, resulting in a superior filtration system that allows plenty of free-flowing air for added performance, but not at the cost of letting contaminants get through. In fact, AIRAIID® premium filters are proven to trap even microscopic dirt particles that often get past the common cotton-gauze "performance" filters typically found on the market. We are so confident in our filters that we back each and every one of them with a "no hassle" lifetime warranty. If you ever have a problem with an AIRAIID® filter, we'll take care of it, no questions asked!

**SYNTHAMAX® DRY TECHNOLOGY**

In 2009 AIRAIID® introduced the next generation in filter technology. Our SynthaMax® filters feature 100% synthetic filter material, which offers the same superior filtering properties as our pioneering SynthaFlow® media, but without the need for periodic oiling. SynthaMax® non-oiled filters are both washable and reusable. When it is time to service the air filter, we offer a premium cleaning solution that cleans the filter without damaging the filter media. Best of all, they look great! At first they seem indistinguishable from the iconic red cotton performance filters, but even after many services, colorfast-dyed SynthaMax® will maintain its colorful appearance. SynthaMax® Dry filters are also available with blue or black filter media.

*OILED Cotton/Synthetic Blend  
Multiple Layers  
Washable & Reusable  
Lifetime Warranty!*



*NON-OILED Technology  
Super Synthetic  
Washable & Reusable  
Lifetime Warranty!*

*All  
CONE filters are  
also available in RED, BLUE  
& BLACK Synthamax® Dry  
See page 32*



**4 FILTER CHOICES • 3 COLORS TO CHOOSE FROM!**



# DIESEL

## IMPROVE PULLING POWER

### DIESEL PERFORMANCE

Diesel engines are THE choice for heavy hauling. Modern diesel engines produce mountains of torque but also need incredible amounts of air to make power. AIRAID® understands the unique needs of diesel trucks and has developed a complete line of cold air intake systems that deliver plenty of clean, cold air to everything from stock to heavily modified diesel engines.

AIRAID® Cold Air Dam (CAD) systems utilize specially formed metal panels that help keep hot engine compartment air away from the filter

while directing in plenty of cool outside air. AIRAID® MXP systems include a complete replacement roto-molded intake box that utilizes the factory cold air inlet duct while often adding additional cold air inlets. Both types of intakes use massive premium air filters to handle the tremendous airflow requirements of modern turbocharged diesel engines. AIRAID® diesel intakes work with the factory tuning, so no additional modifications are needed. All in all, AIRAID® offers quality performance intake solutions for modern diesel trucks.



One-Piece Cold Air Box

Stainless Steel Hose Clamps

Roto-Molded Intake Tubes

Large Air Inlets

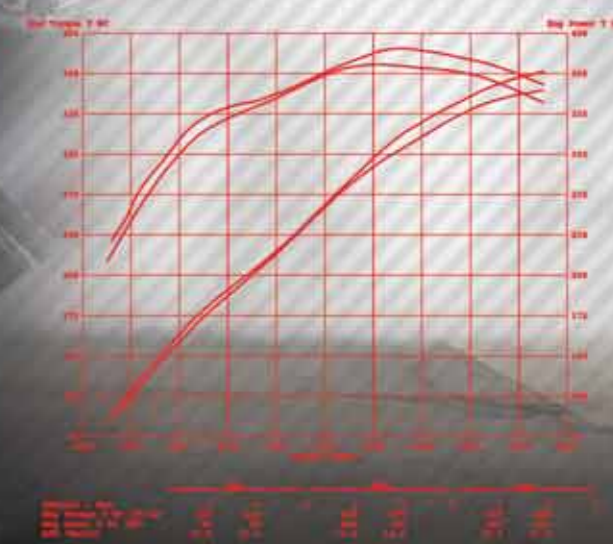


○ Bolt-On Horsepower

○ High Flow Filters

○ Dyno Tested Results

Check out the full list of Diesel Performance Intake Systems starting on page 15



Products listed with an EO number are legal for use in all 50 States. Products without an EO number are not legal for use on any pollution-controlled motor vehicle registered for street use in the state of California or in other states that have adopted California emissions standards. Please visit our website for the most up to date information on the emissions status of individual products.

Products listed with an EO number are legal for use in all 50 States. Products without an EO number are not legal for use on any pollution-controlled motor vehicle registered for street use in the state of California or in other states that have adopted California emissions standards. Please visit our website for the most up to date information on the emissions status of individual products.

# BOLT-ON HORSEPOWER

# GAS TRUCK

- Bolt-On Horsepower
- High Flow Filters
- No-Hassle Warranty



## GAS TRUCK PERFORMANCE PRODUCTS

AIRAID®'s roots are in bolt-on performance for gas-powered trucks. Since the original AIRAID® classic intake for the late '80s TBI Chevy trucks, AIRAID® has specialized in offering bolt-on Cold Air Intake solutions for most popular domestic and import trucks. Today we use cutting edge technology and high-quality materials to build cold air intakes for late-model trucks and SUVs.

Modern truck engines are very efficient but are plagued by restrictive factory intakes that hurt performance. AIRAID's MXP and CAD intakes target the restrictive factory components and replace them with free-flowing intake boxes that pull cool outside air while keeping hot engine compartment air away from the filter. That cold air travels through a premium filter that is designed to improve airflow without sacrificing filtration. A new intake tube further improve airflow to the engine while still allowing the MAF sensor (if applicable) to work within factory calibrations. Allowing the engine to breathe in plenty of cool outside air improves power and throttle response at the same time. Rest assured, whether it's a Toyota Tacoma, an EcoBoost F-150, or any other late-model truck, AIRAID® offers the best truck cold air intakes on the market.



Four  
«lter choices,  
three color  
options



Roto-Molded Intake Tubes  
Blade Style Weather-stripping  
Stainless Steel Clamps  
High Flow Premium Filter  
Cold Air Dam Design  
P/N 403-101

**QUALITY YOU CAN SEE! • PERFORMANCE YOU CAN FEEL!**



Products listed with an EO number are legal for use in all 50 States. Products without an EO number are not legal for use on any pollution-controlled motor vehicle registered for street use in the state of California or in other states that have adopted California emissions standards. Please visit our website for the most up to date information on the emissions status of individual products.

# BOLT-ON AMERICAN MUSCLE

- Bolt-On Horsepower
- High Flow Filters
- Dyno Tested Results

Check out the full list of muscle car intake systems starting on page 15



## MODERN MUSCLE PRODUCTS

The modern muscle car wars are in full swing and we all get to benefit from some of the most powerful late-model muscle cars to ever roll off of an assembly line. Whether your preference is a Bowtie, a Blue Oval, or a Mopar, AIRAID® has modern muscle covered.

The biggest current news in the muscle car world is the release of the 2015 Mustang, and AIRAID® offers multiple intake options for the 2.3L Ecoboost, the 3.7L V6, and of course the 5.0L GT. Our MXP intake system offers solid bolt-on performance gains, while our cold air dam race intake provides big airflow and supports other performance modifications. These new systems join our extremely popular line of Mustang cold air intakes for multiple generations of this popular pony car.

Chevrolet fans are all about the newest C7 Corvette, and AIRAID® once again delivers the goods with a complete cold air intake system for the most powerful Vette to ever hit the streets. Our MXP system

for the V6 and V8 Camaro offer simple, solid ways to increase performance with no tuning required. We even offer intakes for lower production Chevy performance applications, including the Cadillac CTS-V, the Camaro ZL1 and the Chevy SS.

Mopar muscle fans have more choices than ever before with the late-model Challenger, Charger, and Chrysler 300C, and AIRAID® has all three engine choices covered: the 3.6L PentaStar, the 5.7L Hemi, and even the fire-breathing 6.4L Hemi in the SRT-8s. We offer a traditional cold air dam system for these applications as well as a new MXP series intake featuring a one-piece roto-molded intake box and engine-specific intake tubes. Regardless of your performance needs and budget, AIRAID® has you covered!

Products listed with an EO number are legal for use in all 50 States. Products without an EO number are not legal for use on any pollution-controlled motor vehicle registered for street use in the state of California or in other states that have adopted California emissions standards. Please visit our website for the most up to date information on the emissions status of individual products.



# JEEP

## UNLEASH THE POWER



### STREET & TRAIL PERFORMANCE PRODUCTS

#### JEEP BOLT-ON POWER

There is no denying that Jeep vehicles are a mainstay of the off-road world. Their compact design, solid axles, and low gearing enable off-road enthusiasts to tackle trails that leave most other makes running back to the pavement. However, with the exception of the Hemi-powered Grand Cherokee, Jeeps have never been known for being powerhouses. Sure, the 4.0L inline six-cylinder is well respected for its low-end torque, but the various four-cylinder engines along with the 3.8L V-6 in the 2007-2011 Wrangler are seriously lacking in the power department. The new 3.6L Pentastar engine in the 2012 Wrangler is a welcome change, but overall, Jeeps need all the help they can get when it comes to making power. Once again, AIRAID® delivers the goods with a complete line of cold air intake systems.

AIRAID® intake systems are available for popular Jeep models, including the Wrangler, Cherokee, Grand Cherokee, Hemi-powered Grand Cherokee, and the fire-breathing SRT8. Each system has been extensively dyno-tested to provide increased airflow and a steady supply of cold air for more horsepower, torque, and fuel economy. AIRAID® intake systems can also help restore the power lost to heavy vehicle accessories, such as oversize tires, steel bumpers, winches, and rollcages. These Intakes have the same precision fit and finish as the rest of the AIRAID® product line and are backed by our exclusive "no hassle" lifetime warranty.



#### JEEP POWERAID® SPACER

PowerAid® throttle body spacers help make the most of the available power and torque in a Jeep. PowerAid® spacers improve part-throttle torque and mid-range power, which is right where Jeep engines need the most help. Our patented helix bore design gives the incoming air a spinning motion as it passes through the spacer, which improves the velocity of the air charge as it enters the combustion chamber. This translates to more complete combustion of the atomized fuel and helps provide more power.



**QUALITY YOU CAN SEE! • PERFORMANCE YOU CAN FEEL!**

Products listed with an EO number are legal for use in all 50 States. Products without an EO number are not legal for use on any pollution-controlled motor vehicle registered for street use in the state of California or in other states that have adopted California emissions standards. Please visit our website for the most up to date information on the emissions status of individual products.





# POWER

## BOLT-ON HORSEPOWER



Blade Style Weather-stripping

Roto-Molded Intake Tubes

High Flow Premium Filter

One-Piece Cold Air Box

Large Air Inlet

P/N 202-111



The Performance Intake Company

### AIRAID® COLD AIR INTAKE SYSTEMS

Call it the power principle: better breathing equals more horsepower and torque. In order to fully understand this philosophy, you have to get down to basics. Since an engine is essentially a giant air pump, improving air flow creates more power. On most stock intake systems, the main air flow restrictions are the intake box, the actual air inlet to the box and the paper air filter inside.

One of the best ways to bolt on more horsepower and torque by improving air flow to an engine is with an AIRAID® intake system. All AIRAID® intake systems are computer designed and dyno tested and tuned to extract performance for each application.

### COLD AIR: THE SECRET WEAPON

Improving airflow to the engine is just one part of what AIRAID® Intake Systems are designed to accomplish. It is a scientific fact that cold air is denser than hot air, so therefore cold air packs more oxygen molecules into an engine. More oxygen means more complete combustion, and more combustion equals more power. AIRAID® intake systems replace your vehicle's restrictive factory air box with a computer-designed Cold Air Dam (CAD), which separates the AIRAID® premium filter from hot engine compartment air while supplying the filter with plenty of cool outside air. This cool, dense air charge is the key to getting more power from your engine. Most AIRAID® intake systems are smog-legal and utilize factory mounting points for ease of installation. Last but certainly not least, all AIRAID® products are constructed using the finest materials available today and backed by our Lifetime "no hassle" lifetime warranty.

AC - AIRAID Classic • CAD - Cold Air Dam • MXP - MXP Series

	Year	Engine	System Type	Tube Included	Oiled	CARB E.O.# <sup>^</sup>	Dry RED	CARB E.O.# <sup>^</sup>	Dry Black	CARB E.O.# <sup>^</sup>	Dry Blue	CARB E.O.# <sup>^</sup>
Rainier	2004	4.2L	CAD	Yes	200-126-1	D-609-2	201-126-1		202-126-1		203-126-1	
	2005	4.2L	CAD	Yes	200-126-1		201-126-1		202-126-1		203-126-1	
Escalade	99-00	5.7L	AC	Yes	200-102	D-520-2	201-102	D-609-7	202-102		203-102	
	99-00	5.7L	CAD	Yes	200-207	D-609-5	201-207	D-609-7	202-207		203-207	
Retro Kit	99-00	5.7L	CAD	Yes	200-240	D-609-7	201-240	D-609-7	202-240		203-240	
Escalade, ESV, EXT	02-06	5.3L & 6.0L Low Hood	CAD	No	200-112-1	D-609-7	201-112-1	D-609-7	202-112-1		203-112-1	
	02-06	5.3L & 6.0L Mech. Fan/Low Hood	CAD	Yes	200-145		201-145	D-609-7	202-145		203-145	
	02-04	5.3L & 6.0L Mech. Fan/Low Hood	MXP	Yes	200-247	D-609-5	201-247	D-609-7	202-247		203-247	
	05-06	5.3L & 6.0L Elec. Fan/Low Hood	CAD	Yes	200-185	D-609-2	201-185	D-609-7	202-185		203-185	
	05-06	5.3L & 6.0L Elec. Fan/Low Hood	MXP	Yes	200-250	D-609-5	201-250	D-609-7	202-250		203-250	
	07-08	6.2L	CAD	No	200-196	D-609-5	201-196	D-609-7	202-196		203-196	
	2007	6.2L	CAD	Yes	200-197	D-609-2	201-197	D-609-7	202-197		203-197	
	2008	6.2L	CAD	Yes	200-197	D-609-2	201-197		202-197		203-197	
	07-08	6.2L Elec. Fan	MXP	Yes	200-267		201-267		202-267		203-267	
	09-12	6.2L	CAD	No	200-244	D-609-7	201-244	D-609-7	202-244		203-244	
	09-12	6.2L Elec. Fan	CAD	Yes	200-233	D-609-7	201-233	D-609-7	202-233		203-233	
	09-12	6.2L Elec. Fan	MXP	Yes	200-270	D-609-7	201-270	D-609-7	202-270		203-270	
13-14	6.2L	CAD	No	200-244		201-244		202-244		203-244		
13-14	6.2L Elec. Fan	CAD	Yes	200-233		201-233		202-233		203-233		
13-14	6.2L Elec. Fan	MXP	Yes	200-270		201-270		202-270		203-270		
2015	6.2L	MXP	Yes	200-111	D-609-12	201-111	D-609-12	202-111	D-609-12	203-111	D-609-12	
CTS	08-11	3.6L	CAD	Yes	250-252		251-252		252-252		253-252	
	08-11	3.6L	CAD	Yes	250-252C		251-252C		252-252C		253-252C	
	09-11	3.0L	CAD	Yes	250-255		251-255		252-255		253-255	
	09-11	3.0L	CAD	Yes	250-255C		251-255C		252-255C		253-255C	
CTS-V (Sedan/Coupe)	09-15	6.2L	CAD	Yes	250-253		251-253		252-253		253-253	
	09-15	6.2L	CAD	Yes	250-253C		251-253C		252-253C		253-253C	
SRX	10-11	3.0L	CAD	Yes	250-261		251-261		252-261		253-261	
	10-11	3.0L	CAD	Yes	250-261C		251-261C		252-261C		253-261C	
Avalanche 1500	02-06	5.3L	CAD	No	200-112-1	D-609-7	201-112-1	D-609-7	202-112-1		203-112-1	
	02-06	5.3L Mech. Fan/Low Hood	CAD	Yes	200-145	D-609-2	201-145	D-609-7	202-245		203-245	
	02-04	5.3L Mech. Fan/Low Hood	MXP	Yes	200-247	D-609-5	201-247	D-609-7	202-247		203-247	
	05-06	5.3L Elec. Fan/Low Hood	CAD	Yes	200-185	D-609-2	201-185	D-609-7	202-185		203-185	
	05-06	5.3L Elec. Fan/Low Hood	MXP	Yes	200-250	D-609-5	201-250	D-609-7	202-250		203-250	
	07-08	5.3L & 6.0L	CAD	No	200-196	D-609-5	201-196		202-196		203-196	
	07-08	5.3L & 6.0L	CAD	Yes	200-197	D-609-2	201-197		202-197		203-197	
	07-08	5.3L & 6.0L Elec. Fan	MXP	Yes	200-267		201-267		202-267		203-267	
	09-10	5.3L & 6.0L	CAD	No	200-244	D-609-5	201-244		202-244		203-244	
	09-10	5.3L & 6.0L Elec. Fan	CAD	Yes	200-233	D-609-5	201-233		202-233		203-233	
09-13	5.3L Elec. Fan	MXP	Yes	200-270		201-270		202-270		203-270		
11-13	5.3L Elec. Fan	CAD	No	200-244		201-244		202-244		203-244		
11-13	5.3L Elec. Fan	CAD	Yes	200-233		201-233		202-233		203-233		
Avalanche 2500	02-06	8.1L Low Hood	CAD	No	200-112-1	D-609-7	201-112-1	D-609-7	202-112-1		203-112-1	
Camaro	10-11	3.6L	MXP	Yes	250-242		251-242		252-242		253-242	
	12-14	3.6L	MXP	Yes	250-310	D-609-15	251-310	D-609-15	252-310	D-609-15	253-310	D-609-15



P/N 252-242



P/N 203-244



P/N 200-111

<sup>^</sup>Products listed with an EO number are legal for use in all 50 States. Products without an EO number are not legal for use on any pollution-controlled motor vehicle registered for street use in the state of California or in other states that have adopted California emissions standards. Please visit our website for the most up to date information on the emissions status of individual products.

Table with columns: Year, Engine, System Type, Tube Included, Oiled, CARB E.O.#, Dry RED, CARB E.O.#, Dry Black, CARB E.O.#, Dry Blue, CARB E.O.#. Rows include Camaro, Colorado, Corvette C5/Z06, S10 Pickup, S10 Blazer, Silverado 1500, etc.

\*Classic Body Style



P/N 250-292C



P/N 203-206-1



P/N 202-108

\*Products listed with an EO number are legal for use in all 50 States. Products without an EO number are not legal for use on any pollution-controlled motor vehicle registered for street use in the state of California or in other states that have adopted California emissions standards. Please visit our website for the most up to date information on the emissions status of individual products.

Table with columns: Year, Engine, System Type, Tube Included, Oiled, CARB E.O.#, Dry RED, CARB E.O.#, Dry Black, CARB E.O.#, Dry Blue, CARB E.O.#. Rows include 2500 Gas, 3500 Gas, HD 1500/2500/3500 Gas, HD 2500/3500 & 3500 Diesel, SS Sedan, Suburban RV & C/K 1500/2500, 1500, 2500.

\*Products listed with an EO number are legal for use in all 50 States. Products without an EO number are not legal for use on any pollution-controlled motor vehicle registered for street use in the state of California or in other states that have adopted California emissions standards. Please visit our website for the most up to date information on the emissions status of individual products. \*Classic Body Style



AC – AIRAID Classic • CAD – Cold Air Dam • MXP – MXP Series

Table with columns: Year, Engine, System Type, Tube Included, Oiled, CARB E.O.#^, Dry RED, CARB E.O.#^, Dry Black, CARB E.O.#^, Dry Blue, CARB E.O.#^



P/N 403-101



P/N 400-239-1



P/N 452-172

\*Products listed with an EO number are legal for use in all 50 States. Products without an EO number are not legal for use on any pollution-controlled motor vehicle registered for street use in the state of California or in other states that have adopted California emissions standards. Please visit our website for the most up to date information on the emissions status of individual products.

AC – AIRAID Classic • CAD – Cold Air Dam • MXP – MXP Series

Table with columns: Year, Engine, System Type, Tube Included, Oiled, CARB E.O.#^, Dry RED, CARB E.O.#^, Dry Black, CARB E.O.#^, Dry Blue, CARB E.O.#^

\*Products listed with an EO number are legal for use in all 50 States. Products without an EO number are not legal for use on any pollution-controlled motor vehicle registered for street use in the state of California or in other states that have adopted California emissions standards. Please visit our website for the most up to date information on the emissions status of individual products. ^^EO applies to 5/05 - 2006 models only









SIMPLICITY DEFINED

AIRAID® Jr. kits target the most restrictive elements of factory intake systems: the intake tube and the paper filter. Featuring an AIRAID® premium drop-in replacement filter and an AIRAID® modular intake tube, AIRAID® Jr. kits help boost horsepower for those seeking a simple, economical introduction to the performance market.

As with other AIRAID® intake systems, AIRAID® Jr. kits help "straighten" and improve clean air flow to the engine for added throttle response, increased horsepower, and more torque. AIRAID® premium direct-fit replacement filters further improve airflow to the engine and do a better job of trapping contaminants than stock paper filters. Best of all, AIRAID® direct-fit replacement filters are washable, reusable, and fully backed by the company's "no hassle" lifetime warranty.

Custom made to fit each vehicle, all AIRAID® Jr. kits are easy to install and require no cutting or drilling.

Drop-In Replacement Filter  
Oiled or Dry Technology  
Washable & Reusable  
Roto-Molded Intake Tube

Table with 9 columns: Year, Engine, AIRAID® Jr. Kit Oiled, CARB E.O.#^, AIRAID® Jr. Kit Dry, CARB E.O.#^, AIRAID® Replacement Oiled, AIRAID® Replacement Dry. Rows include various vehicle models like Escalade, Camaro, Silverado, etc.

\*Classic Body Style

^Products listed with an EO number are legal for use in all 50 States. Products without an EO number are not legal for use on any pollution-controlled motor vehicle registered for street use in the state of California or in other states that have adopted California emissions standards.

Table with 9 columns: Year, Engine, AIRAID® Jr. Kit Oiled, CARB E.O.#^, AIRAID® Jr. Kit Dry, CARB E.O.#^, AIRAID® Replacement Oiled, AIRAID® Replacement Dry. Rows include Durango, Ram Gas, Ram Diesel, Expedition, F150, Mustang, Sierra 1500, etc.

\*Classic Body Style



^Products listed with an EO number are legal for use in all 50 States. Products without an EO number are not legal for use on any pollution-controlled motor vehicle registered for street use in the state of California or in other states that have adopted California emissions standards.





**MODULAR INTAKE TUBES**

Air is lazy and will always follow the path of least resistance. So, why not give it an easier path into your engine with AIRAID® modular intake tubes! Constructed of cross-linked, high-density polyethylene, the AIRAID® MIT provides a smooth path to the throttle body that flows up to an additional 400 cfm over restrictive stock intake tubes.

With the AIRAID® MIT, additional horsepower and torque can be had with just simple tools and a few minutes for installation. All of the required hardware is included along with easy-to-follow instructions.

AIRAID® Modular Intake tubes are built specifically for each make and model, and are compatible with stock intakes as well as all other AIRAID® intake systems.

*Roto-Molded Intake Tube  
Stainless Steel Clamps  
Silicone Couplers/Hump Hoses*

	Year	Engine	Modular Intake Tube	CARB E.O.#*	Can Be Used With P/N
Escalade, ESV, EXT	02-04	5.3L & 6.0L Mech. Fan	200-912		200-112-1
	05-06	5.3L & 6.0L Elec. Fan	200-919		200-112-1
	07-10	6.2L Elec. Fan	200-996	D-609-6	200-196 or 200-244
	11-13	6.2L Elec. Fan	200-996		200-244
	2015	6.2L	200-911		
Avalanche 1500	02-04	5.3L Mech. Fan	200-912	D-609-6	200-112-1
	05-06	5.3L Elec. Fan	200-919	D-609-6	200-112-1
	07-10	5.3L & 6.0L Elec. Fan	200-996	D-609-6	200-196 or 200-244
	11-13	5.3L	200-996		200-244
Camaro	10-14	3.6L	250-915	D-609-11	
	2015	3.6L	250-915		
	10-14	6.2L	250-914	D-609-11	
2015	6.2L	250-914			
Corvette C5	01-04	5.7L	250-292		
Corvette C5 (Carbon Fiber)	01-04	5.7L	250-292C		
Silverado 1500 (Incl SS)	99-04	4.8L, 5.3L & 6.0L Mech. Fan	200-912	D-609-6	200-112-1
	05-07*	4.8L, 5.3L & 6.0L Elec. Fan	200-919	D-609-6	200-112-1 or 200-168
	07-10	4.8L, 5.3L, 6.0L & 6.2L Elec. Fan	200-996	D-609-6	200-196 or 200-244
	11-13	4.8L, 5.3L & 6.2L Elec. Fan	200-996		200-244
	14-15	5.3L	200-985		
	14-15	6.2L	200-911		
2500	99-04	5.3L & 6.0L Mech. Fan	200-912	D-609-6	
3500	01-07*	6.0L Mech. Fan	200-912	D-609-6	
HD 1500/2500	01-07*	6.0L Mech. Fan	200-912	D-609-6	200-112-1 or 200-168
Suburban 1500	00-05	5.3L Mech. Fan	200-912	D-609-6	200-112-1
	05-06	5.3L & 6.0L Elec. Fan	200-919	D-609-6	200-112-1
	07-10	4.8L, 5.3L & 6.0L Elec. Fan	200-996	D-609-6	200-196 or 200-244
	11-13	5.3L	200-996		200-244
	2015	5.3L	200-985		
Suburban 2500	00-06	6.0L Mech. Fan	200-912	D-609-6	
Tahoe	00-04	4.8L & 5.3L Mech. Fan	200-912	D-609-6	
	05-06	4.8L & 5.3L Elec. Fan	200-919	D-609-6	
	07-10	4.8L, 5.3L & 6.0L Elec. Fan	200-996	D-609-6	
	11-13	5.3L Elec. Fan	200-996		
	2015	5.3L	200-985		
Aspen	07-08	5.7L	300-943	D-609-6	
Charger SRT8	06-07	6.1L Scoop Assembly	350-993		350-199
Dakota	00-03	4.7L	300-917	D-609-6	300-117

\*Classic Body Style

\*Products listed with an EO number are legal for use in all 50 States. Products without an EO number are not legal for use on any pollution-controlled motor vehicle registered for street use in the state of California or in other states that have adopted California emissions standards. Please visit our website for the most up to date information on the emissions status of individual products.

	Year	Engine	Modular Intake Tube	CARB E.O.#*	Can Be Used With P/N
Dakota	05-07	4.7L	300-965	D-609-6	300-165
Durango	00-03	4.7L	300-917	D-609-6	300-117
	04-06	4.7L	300-944	D-609-6	300-143
	04-08	5.7L	300-943	D-609-6	300-143
Ram Gas	02-07	4.7L	300-925-1		300-125-1 thru 05, 300-192 - 06 thru 08
	03-08	5.7L	300-924-1	D-609-6	300-125-1 thru 05, 300-190 - 06 thru 08
Ram Diesel (Incl. 600 series)	03-07	5.9L Cummins	300-928	D-609-6	300-128 & 300-155
	13-15	6.7L Cummins	300-986		
Expedition	05-06	5.4L	400-966**	D-609-6	
F-150	04-08	5.4L	400-940**	D-609-6	
(Does not include Heritage)	04-06	4.6L	400-941	D-609-6	
	11-14	3.5L EcoBoost	401-901		
	11-14	5.0L	400-999		
Mustang	11-14	3.7L	450-945	D-609-11	
	11-14	5.0L	450-946	D-609-11	
	2015	2.3L EcoBoost	450-930		
	2015	5.0L	450-932		
Sierra 1500 (Incl Denali/C3)	99-04	4.8L, 5.3L, 6.0L Mech. Fan	200-912	D-609-6	200-112-1
	05-07*	4.8L, 5.3L & 6.0L Mech. Fan	200-919	D-609-6	200-112-1
	07-10	4.8L, 5.3L, 6.0L & 6.2L Elec. fan	200-996	D-609-6	200-196 or 200-244
	11-13	4.8L, 5.3L & 6.2L	200-996		200-244
	14-15	5.3L	200-985		
	14-15	6.2L	200-911		
2500	99-04	5.3L & 6.0L Mech. Fan	200-912	D-609-6	200-112-1
3500	01-06	6.0L Mech. Fan	200-912	D-609-6	200-112-1
HD 1500/2500	01-06	6.0L Mech. Fan	200-912	D-609-6	200-112-1
Yukon/Denali	00-04	4.8L, 5.3L & 6.0L Mech. Fan	200-912	D-609-6	200-112-1
	05-06*	4.8L, 5.3L & 6.0L Elec. Fan	200-919	D-609-6	200-112-1
	07-10	4.8L, 5.3L, 6.0L & 6.2L Elec. fan	200-996	D-609-6	200-196 or 200-244
	11-13	5.3L, 6.0L & 6.2L Elec. fan	200-996		200-244
	2015	5.3L	200-985		
2015	6.2L	200-911			
Yukon XL 1500	00-06	5.3L & 6.0L Mech. Fan	200-912	D-609-6	200-112-1
	05-06	5.3L & 6.0L Elec. Fan	200-919	D-609-6	200-112-1
	07-10	5.3L, 6.0L & 6.2L Elec. fan	200-996	D-609-6	200-196 or 200-244
	11-13	5.3L, 6.0L & 6.2L Elec. fan	200-996		200-244
	2015	5.3L	200-985		
2015	6.2L	200-911			
Yukon XL 2500	00-06	6.0L Mech. Fan	200-912	D-609-6	200-112-1
H2	03-07	6.0L	200-983	D-609-6	200-183
SUT	05-07	6.0L	200-983	D-609-6	200-183
Grand Cherokee	99-04	4.7L Except H.O.	310-927	D-609-6	310-127
	05-10	5.7L	310-970	D-609-6	310-170
Mark LT	06-08	5.4L 24V Triton	400-940**	D-609-6	
Raider	06-07	4.7L	300-965	D-609-6	
4Runner	96-02	3.4L	510-934**	D-609-6	
Tacoma	95-04	3.4L	510-934	D-609-6	

\*Classic Body Style • \*\*Fits With Factory Intake Only



P/N 400-901

*MIT's are built specifically for each make and model!*



P/N 450-946

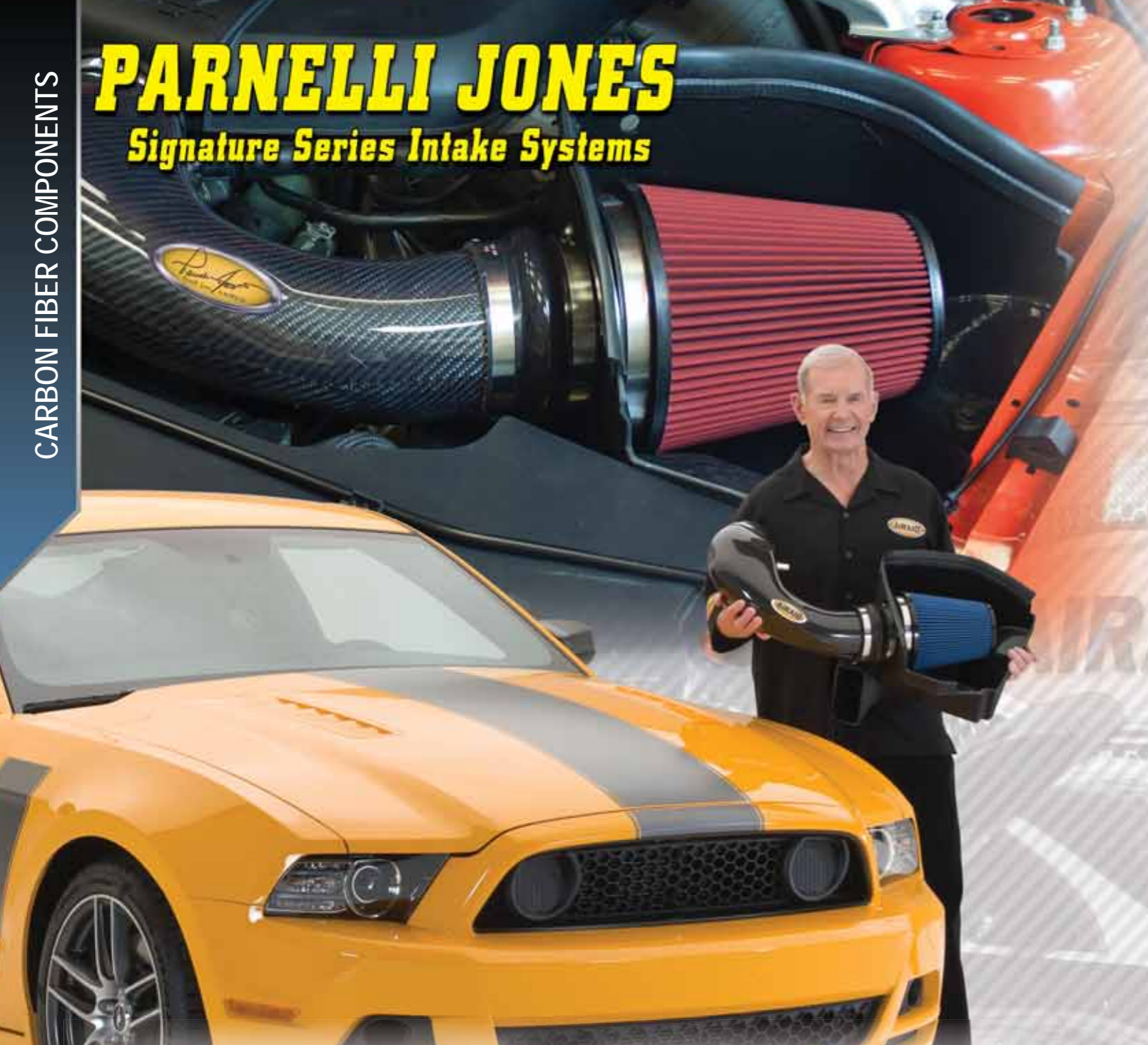


P/N 200-911

\*Products listed with an EO number are legal for use in all 50 States. Products without an EO number are not legal for use on any pollution-controlled motor vehicle registered for street use in the state of California or in other states that have adopted California emissions standards. Please visit our website for the most up to date information on the emissions status of individual products.

# PARNELLI JONES

## Signature Series Intake Systems



The muscle car wars are back in full swing, and Ford has thrown down the gauntlet with the Mustang GT and BOSS 302. Now AIRAID® has teamed up with legendary BOSS racing champion Parnelli Jones to release special edition MXP series carbon fiber intake systems for the latest generation Mustangs.

Parnelli Jones raced the original Mustang Boss to a Trans Am Championship in 1970, so he knows a thing or two about Mustangs and how to make power. AIRAID's newest MXP series intake systems are a tribute to Parnelli's devotion to power and performance. Like all of AIRAID's MXP series intake kits, no special tuning is required and the installation is a simple bolt-on procedure.

The AIRAID® system starts with a REAL carbon fiber 4.25" diameter

intake tube. This is not some cheap imitation piece; it is real hand-laid carbon fiber that adds a show-quality look to the engine compartment. It allows for less restricted airflow and incorporates a special billet plate that accepts the factory MAF sensor. The Intake Tube connects to AIRAID's one-piece roto-molded cold air box via a urethane hump hose and stainless steel clamps. The box is designed to keep hot engine compartment air away from the filter while increasing the amount of cold air available and even utilizes the factory cold air scoop.

The special addition Parnelli Jones carbon fiber Mustang systems are available for the 2012-2013 Mustang BOSS 302. 2011-2014 Mustang GT available in carbon fiber only!

### CARBON FIBER INTAKE SYSTEMS

AIRAID® offers a premium line of MXP cold air intake systems that feature a REAL carbon fiber intake tube. Available for select Camaro, Corvette, and Mustang applications, these hand-laid carbon fiber intake tubes optimize airflow and improve power, and they do it with a show-quality, race-inspired look!

All of AIRAID's MXP carbon fiber intake systems include a one-piece roto-molded air box that utilizes all of the factory cold air inlets while keeping the filter isolated from hot engine compartment air. A built-in velocity stack further optimizes airflow through large oiled or SynthaMax® dry premium filter. Select kits are even available with a blue SynthaMax® filter. The filter is connected to the engine via a genuine hand-laid carbon fiber intake tube that includes a billet aluminum MAF sensor housing and billet hose attachment ports when necessary. The intake tube is attached via silicone or urethane couplers and stainless steel clamps. The carbon fiber intake tubes are also available separately for those that have already purchased an MXP system but wish to upgrade.

Like the rest of AIRAID's product line, each MXP carbon fiber cold air intake system provides an exact fit and installs easily using simple hand tools. With AIRAID® carbon fiber intake systems, customers benefit from improved power and style at the same time!



P/N 250-292C



P/N 252-243C

P/N 100-725  
7 1/4" base  
opening

P/N 100-525  
5 1/8" base  
opening



### CUSTOM CARBON FIBER HATS

Having a supply of clean, cold air is especially important on high-performance engines, which is why AIRAID® now offers unique carbon fiber hats that enable carbureted engines to take advantage of our modular U-Build-It Intake systems. Constructed of REAL carbon fiber, these hats feature standard 5-1/8" base 4" inlet or 7-1/4" base 5" diameter inlet. Shaped to improve airflow, car builders can use our carbon fiber hats along with other UBI components to build their own high-performance cold air intake system!



# U-BUILD-IT CUSTOM INTAKE SYSTEMS

## EASY TO BUILD... ...just follow these 4 simple steps

If you can imagine a custom intake system, now you can build it! The U-Build-It (UBI) kit is a versatile system that can make it easy to fabricate a custom intake system. Our master kits include everything you need to build a complete system, and all components are also available individually for increased adaptability. Whether you are doing an engine swap or have a custom application where space is tight, the AIRAID® UBI intake system can accommodate just about any application. The only limitation is your imagination!

Each UBI master kit and individual intake tubes are available in 3", 3.5", 4", 5", and 6" diameters. The roto-molded intake tubes feature multiple angles and straights that allow you to route the intake to almost any desired location in the engine compartment. The master kits include an intake tube, coupler, hump hose, reducer, brackets, hose clamps, hardware, and a premium AIRAID® filter.



### 1 THROTTLE BODY, TURBO CHARGER & SUPERCHARGER SIZE



ID Size	Length	Description	P/N
3.62	3"	GM Truck LSX Plastic MAF, GM Dmax 01-05	9212
3.38"	3"	GM 3.6L Plastic MAF	9022
3.5" to 4.725"	2.88" oval	GM Throttler Body	9232
3.62"	3"	GM Truck LSX Plastic MAF, GM Dmax 01-05	9200
3.62"	4"	GM Truck LSX Plastic MAF, GM Dmax TB 01-05	9013
3.62"	3"	GM Truck LSX Plastic MAF, GM Dmax TB 01-05	9015
3.62" to 3.875"	3.5"	GM LSX (with 3/8" port)	9016
3.63"	3"	GM Truck LSX Plastic MAF, GM Dmax, 01-05	9021
3.785" w/ clamp	1"	GM LSX throttle body, Original Equipment Style Coupler - EPDM Rubber Hump Hoses	9201
3.87"	1.62"	GM LSX throttle body	9213
3.875"	2"	GM LSX throttle body	9208
3.875" to 3.5"	2.5"	Reducing Coupler GM	9234
4" to 3"	2.5"	GM 3.6L/3.0L	9112
4" to 3.875"	2"	GM LSX	9116
4" to 4.32"	4"	Reducing Coupler GM	9235
4" to 4.725"	2.88" oval	GM Throttler Body	9233
4.38" to 3.88"	2.5"		9113

ID Size	Length	Description	P/N
3.5" x 3.375"	2"	Dodge 5.7L/6.1L Hemi throttle body, Toyota 4.7L/5.7L throttle body	9102
2.625"	2"	Jeep YJ, SC throttle body	9210
2.625"	3"	Jeep YJ throttle body,	9206
2.75" x 2.5"	2.5"	Jeep TJ, 97-06	9101
3.15"	2.5"	Dodge 4.7L throttle body, 08-12	9214
3.5"	3"	Dodge 5.7L Hemi throttle body	9202
3.75" x 3.38"	2"	Dodge 5.7L Hemi throttle body,	9111
4" x 3.16"	3"	Jeep 3.6L, Toyota 4.0L, Nissan 5.6L throttle body	9119
5" to 4"	3.16"	Dodge Cummins 5.9L, 94-02	9114

ID Size	Length	Description	P/N
2.75"	2.5"	Ford 2.0L	9020
4.0" to 3.5"	2.5"	Ford 5.4L throttle body	9107
3"	3"	Ford 3.7L, 11-13	9215
3.5"	3"	Ford Coyote 5.0L throttle body	9121
3.5" to 3.0"	2.5"	Ford 4.0L/4.6L throttle body	9103
3.5" to 3"	3.5"	Ford F-150 4.6L, 04-07	9100
3.5" to 5.35	2.885"	Ford throttle body	9230
4"	2.5"	Ford 7.3L Powerstroke, 99-03	9019
4"	2.5"	Ford 7.3L Powerstroke, 99-03	9216
4"	2.5"	Ford 7.3L Powerstroke TB	9010
4.0" to 5.35"	2.885"	Ford throttle body	9231
4.5"	3"	Ford 6.7L Powerstroke, 11-13	9026
4"	3.5"	Ford 6.2L Airbox	9007
4" to 3.5"	---	Boss 302 / 5.0L throttle body w/ 28 degree angle	9120
4" to 3.5"	3"	Ford 5.0L throttle body, 11-14	9115
4" x 3"	2.5	Ford 3.7L, 11-13	9025
5.35" to 2.89" oval	2.5"	Ford 4.6L	9205
5.35" to 2.89" oval	2.5"	Ford 4.6L	9211
6.13" to 3.45" oval	2.5"	Ford 5.4L	9014

ID Size	Length	Description	P/N
2.75"	3"	Toyota 3.4L throttle body	9203



Step Reducer  
4" ID to 3" ID x 6" L  
P/N 9122



Ford Throttle Body  
3.5" ID to 5.35" ID oval x 2.5" L  
P/N 9230



GM Throttle Body  
3.5" ID to 4.725" ID oval x 2.88" L  
P/N 9232



Ford 5.4L  
6.13" ID x 3.45" ID oval x 2.5" L  
P/N 9014



Angled Reducer  
4" ID to 3.5" ID x 28° angle w/clamps  
P/N 130-435



Reducer Coupler w/Clamps  
4" ID to 3" ID x 2.5" L  
P/N 130-430



Coupler w/Clamps  
3" ID to 3" ID x 2.5" L  
P/N 120-300

ID Size	Length	Description	P/N
3" x 3.5"	5.5"	Reducing Coupler	9236
3"	3"	GM 3.0L, Toyota 3.4L Plastic MAF	9005
4.5"	4"	Reducing Coupler	9006
2 5/8"	2"	Coupler	9209
3.25"	3.5"	Universal	9003
3.25" x 3.5"	2.5"	Universal	9106
3.5"	3"	GM 4.2L, Ford 4.6L MAF	9002
3.5"	4.5"	GM 4.2L, Ford 4.6L MAF	9000
3.5"	2.5"	Universal	9029
3.5"	3"	Universal	9018
3.5"	2"	Universal	9207
3.5"	3"	Universal	9204
3.5"	12"	Coupler	9221
3.5" to 2.5"	5.1"	Universal	9109
3.5" to 3.0"	2.5"	Reducer	9105
3.5" to 3.375"	3"	Universal	9009
3.5" x 3"	5.124"	Universal	9104
3.62"	4"	GM Truck LSX MAF	9001
3.858" to 3.386"	3.858"	Universal	9008
3"	3"	Universal	9017
3"	12"	Coupler	9220
4.0"	12"	Coupler	9222
4.0" to 3.0"	6"	Universal	9110
4.0" to 3.0"	2.5"	Universal	9108
4.25"	3"	Universal	9004
4.25"	4.25"	Universal	9028
4.25"	3"	Universal	9011
4.5"	4"	Universal	9012
4"	4.25"	Universal	9027
4" to 3.5"	---	Reducer - 28° angle with clamps	9120
4" to 3"	6.0"	Step Reducer	9122
5"	3"	Universal	9023
5"	3"	Universal	9217
6"	3.5"	Universal	9024
6"	3.5"	Universal	9218
6" x 4"	6"	Universal	9118
6" x 5"	6"	Universal	9117

ID Size	Length	Description	P/N
3" to 3"	3"	Coupler w/ clamps	120-300
3" to 3"	3"	Hump Hose w/ clamps	140-300
3.5" to 3"	2.5"	Reducer w/ clamps	130-353
3.5" to 3"	3"	Coupler w/ clamps	120-350
3.5" to 3.5"	3"	Hump Hose w/ clamps	140-350
4" to 3"	2.5"	Reducer w/ clamps	130-430
4" to 3.875"	2"	Reducer w/ clamps	130-438
4" to 3"	3"	Coupler w/ clamps	120-400
4" to 4"	3"	Hump Hose w/ clamps	140-400
5" to 5"	3.5"	Coupler w/ clamps	120-500
5" to 5"	3.5"	Hump Hose w/ clamps	140-500
6" to 4.0"	6"	Reducer w/ clamps	130-640
6" to 5.0"	6"	Reducer w/ clamps	130-650
6" to 6"	3.5"	Coupler w/ clamps	120-600
6" to 6"	3.5"	Hump Hose w/ clamps	140-600

**2** INTAKE TUBES & MASTER KITS

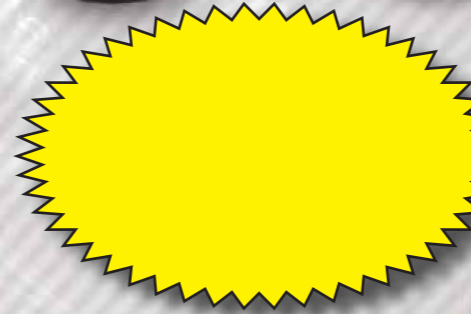


**UBI** intake systems are also available as master kits which include a «lter, various couplers and hardware!



3"	30/45/60/90	---	Universal intake tube, full	100-300
3"	30/45/60/90	---	Universal Master kit II w/ 700-469 Filter	101-300
3"	30/45/60/90	---	Universal Master kit w/700-410 Filter	101-301
3"	30/45/60/90	---	Universal Master kit w/700-493 Filter	101-302
3"	30	---	Angled Tube	100-303
3"	45	---	Angled Tube	100-304
3"	60	---	Angled Tube	100-306
3"	90	---	Angled Tube	100-309
3"	---	2"	Straight Tube	102-300
3"	---	3.5"	Straight Tube	135-300
3"	---	4"	Straight Tube	104-300
3"	---	8"	Straight Tube	108-300
3"	---	10"	Straight Tube	110-300
3"	---	12"	Straight Tube	112-300
3"	---	24"	Straight Tube	124-300
3.5"	---	---	Universal lter adaptor	160-635
3.5"	30/45/60/90	---	Universal intake tube, full	100-350
3.5"	30/45/60/90	---	Universal Master kit w/ 700-420	101-351
3.5"	30/45/60/90	---	Universal Master kit w/ 700-452	101-352
3.5"	30/45/60/90	---	Universal Master kit II w/ 700-469	101-350
3.5"	30	---	Angled Tube	100-353
3.5"	45	---	Angled Tube	100-354
3.5"	60	---	Angled Tube	100-356
3.5"	90	---	Angled Tube	100-359
3.5"	---	2"	Straight Tube	102-350
3.5"	---	3.5"	Straight Tube	135-350
3.5"	---	4"	Straight Tube	104-350
3.5"	---	8"	Straight Tube	108-350
3.5"	---	10"	Straight Tube	110-350
3.5"	---	12"	Straight Tube	112-350
3.5"	---	24"	Straight Tube	124-350
4"	---	---	Universal 4" lter adaptor	160-640
4"	30/45/60/90	---	Universal 4" intake tube, full	100-400
4"	30/45/60/90	---	Universal 4" Master kit II w/ 700-469	101-400
4"	30/45/60/90	---	Universal 4" Master Kit w/ 700-470	101-401
4"	30	---	Angled Tube	100-403
4"	45	---	Angled Tube	100-404
4"	60	---	Angled Tube	100-406
4"	90	---	Angled Tube	100-409
4"	---	2"	Straight Tube	102-400
4"	---	3.5"	Straight Tube	135-400
4"	---	4"	Straight Tube	104-400
4"	---	8"	Straight Tube	108-400
4"	---	10"	Straight Tube	110-400
4"	---	12"	Straight Tube	112-400
4"	---	24"	Straight Tube	124-400

Tubes are available in 30, 45, 60 and 90 Degree bends in multiple diameters



Install Kit with 700-469 Filter Shown Here  
P/N 103-101



Straight Tubes available in a variety of lengths and diameters



Billet Filter Adapter  
P/N 160-642

Plastic Filter Adapter  
P/N 160-641



Various Filter Sizes Available

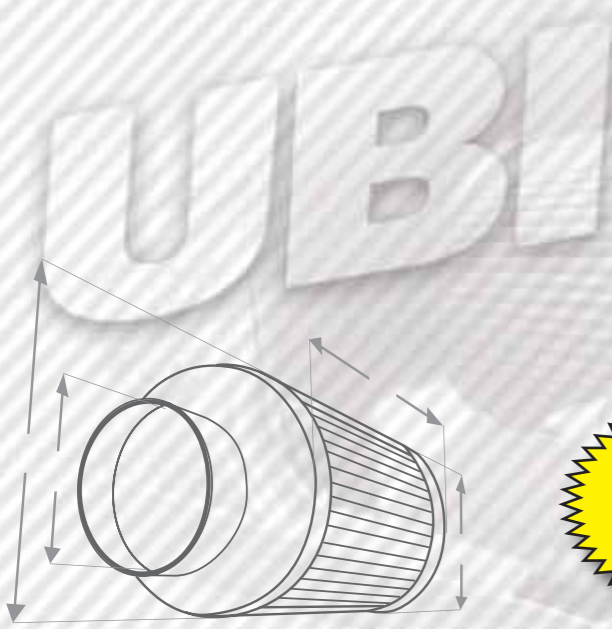


5"	---	---	Universal intake tube, full	100-500
5"	---	---	Install kit w/ 700-496 lter for 5" tube ( lter only)	103-101
5"	30/45/60/90	---	Universal Master kit w/ 700-496	101-501
5"	30	---	Angled Tube	100-503
5"	45	---	Angled Tube	100-504
5"	60	---	Angled Tube	100-506
5"	90	---	Angled Tube	100-509
5"	---	2"	Straight Tube	102-500
5"	---	3.5"	Straight Tube	135-500
5"	---	4"	Straight Tube	104-500
5"	---	8"	Straight Tube	108-500
5"	---	10"	Straight Tube	110-500
5"	---	12"	Straight Tube	112-500
5"	---	24"	Straight Tube	124-500
6"	---	---	Universal lter adaptor	160-641
6" to 4.25"	---	---	Universal lter adaptor - Billet	160-642
6"	---	---	Universal intake tube, full	100-600
6"	---	---	Install kit w/ 700-498 lter ( lter only)	103-102
6"	30/45/60/90	---	Universal Master kit w/ 700-499	101-601
6"	30	---	Angled Tube	100-603
6"	45	---	Angled Tube	100-604
6"	60	---	Angled Tube	100-606
6"	90	---	Angled Tube	100-609
6"	---	2"	Straight Tube	102-600
6"	---	3.5"	Straight Tube	135-600
6"	---	4"	Straight Tube	104-600
6"	---	8"	Straight Tube	108-600
6"	---	10"	Straight Tube	110-600
6"	---	12"	Straight Tube	112-600
6"	---	24"	Straight Tube	124-600

Products listed with an EO number are legal for use in all 50 States. Products without an EO number are not legal for use on any pollution-controlled motor vehicle registered for street use in the state of California or in other states that have adopted California emissions standards. Please visit our website for the most up to date information on the emissions status of individual products.

Products listed with an EO number are legal for use in all 50 States. Products without an EO number are not legal for use on any pollution-controlled motor vehicle registered for street use in the state of California or in other states that have adopted California emissions standards. Please visit our website for the most up to date information on the emissions status of individual products.

**3** CHOOSE WHICH HIGH FLOW PREMIUM FILTER WILL WORK BEST FOR YOUR APPLICATION



Four  
«lter choices,  
three color  
options



**5.5" & 6" FLANGE FILTERS ALSO AVAILABLE SPECIALLY DESIGNED FOR HIGH PERFORMANCE APPLICATIONS**



Filter Size	Filter Dimensions	Filter Adapter	Part Number
3"	---	Filter Adapter	160-630
3"	B: 6" / T: 4.625"	Cone Filter	700-493*
3"	B: 6" / T: 4.625"	Cone Filter	700-494*
3"	B: 6" / T: 5"	Cone Filter	700-492*
3"	B: 6" / T: 4.625"	Cone Filter	700-410*
3" offset	B: 8.50"x5.25" / T: 6"x3.75"	Cone Filter	720-431*
3" x 5" oval	B: 6.75" / T: 4.25"x3" oval	Cone Filter	720-500*
3.5" short	B: 6" / T: 4.625"	Cone Filter	700-452*
3.5" short	B: 6" / T: 4.625"	Cone Filter	700-457*
3.5" short	B: 6" / T: 4.625"	Cone Filter	700-421*
3.5"	B: 6" / T: 4.625"	Cone Filter	700-422*
3.5"	B: 6" / T: 4.625"	Cone Filter	700-450*
3.5"	B: 4.625" / T: 3.5"	Cone Filter	700-430*
3.5"	B: 6" / T: 4.625"	Cone Filter	700-451*
3.5"	B: 6" / T: 4.625"	Cone Filter	700-420*
3.5"	B: 10.75" x 5.5" / T: 9" x 3.5"	Cone Filter	720-477*
3.5"	B: 9.5" x 5.25" / T: 7.75" x 3.75"	Cone Filter	720-130*
3.5"	B: 8.5" x 5.25" / T: 6" x 3.75"	Cone Filter	720-440*
4"	B: 4.625" / T: 3.875"	Cone Filter	700-411*
4" short ange	B: 6" / T: 4.625"	Cone Filter	700-453*
4" short ange	B: 7" / T: 4.625"	Cone Filter	700-458*
4" short ange	B: 6" / T: 4.625"	Cone Filter	700-471*
4"	B: 6" / T: 4.625"	Cone Filter	700-455*
4"	B: 6" / T: 4.625"	Cone Filter	700-456*
4"	B: 4.75" / T: 8"	Cone Filter	700-539*
4"	B: 6" / T: 4.625"	Cone Filter	700-470*
5"	B: 7.5" / T: 5"	Cone Filter	700-491*
5"	B: 7.25" / T: 5"	Cone Filter	700-496*
6"	B: 7.25" / T: 4.75"	Cone Filter	700-466*
6"	B: 7.5" / T: 4"	Cone Filter	700-495*
6"	B: 7.25" / T: 5"	Cone Filter	700-462*
6"	B: 8" / T: 5"	Cone Filter	700-461*
6"	B: 7.25" / T: 5"	Cone Filter	700-469*
6"	B: 10.75" x 7.75" / T: 7.25" x 4.25"	Cone Filter	720-128*
6"	B: 8" / T: 5"	Cone Filter	700-463*
5.5" x 1" Thick	B: 9" / T: 6.85"	Cone Air Filter	700-030*
5.5" x 1" Thick	B: 9" / T: 6.85"	Cone Air Filter	700-031*
5.5" x 1" Thick	B: 9" / T: 6.85"	Cone Air Filter	700-032*
6" x 1" Thick	B: 9" / T: 6.75"	Cone Air Filter	700-497*
6" x 1" Thick	B: 9" / T: 6.75"	Cone Air Filter	700-498*
6" x 1" Thick	B: 9" / T: 6.75"	Cone Air Filter	700-499*

**4** ADDITIONAL COMPONENTS (HOSE CLAMPS, BRACKETS, ADAPTERS, ETC)

Range	Width	Description	P/N
1.125" - 2"	.5"	#24 SS	9400
2.25" - 3.125"	.5"	#44 SS	9401
2.5" - 3.375"	.5"	#48 SS	9402
2.75" - 3.625"	.5"	#52 SS	9403
3" - 3.875"	.5"	#56 SS	9404
3.25" - 4.25"	.5"	#60 SS	9405
3.5" - 4.375"	.5"	#64 SS	9406
3.75" - 4.5"	.5"	#68 SS	9407
4" - 4.875"	.5"	#72 SS	9408
4.5" - 5.375"	.5"	#80 SS	9409
5.625" - 6.5"	.5"	#96 SS	9410
6.125" - 7"	.5"	#104 SS	9411

Length	Description	P/N
4"	Straight bracket	9501
6"	Straight bracket	9502
8"	Straight bracket	9503
12"	Straight bracket	9504
4" to 6"	Adjustable tube bracket	9505
---	L Shaped 90 Degree Bracket	9500

OD	Length	Description	P/N
1/8"	12"	Hose	9305
1/4"	12"	Hose	9302
3/8"	12"	Hose	9304
1/2"	12"	Hose	9300
5/8"	12"	Hose	9301
3/4"	12"	Hose	9303

Measurements	Description	P/N
5 1/4" with 4" inlet	Holley 4150 Carbon Fiber Carb Hat	100-525
7 1/4" with 5" inlet	Holley 4500 Carbon Fiber Carb Hat	100-725
ID: 5" / H: 3.75" / OD: 3.625"	Carburetor/TBI Hat	300-100
ID: 5.125" / H: 5.5" / OD: 3.5"	Carburetor/TBI Hat	200-100

OD	Length	Description	P/N
---	---	Universal Filter Mount (requires lter adapter)	9551
3"	6"	Tube Adapter	9600
3"	6"	MAF Tube w/ 9700 Hitachi Plate	9601
3"	6"	MAF Tube w/ 9720 Blank Plate	9619
3.5"	6"	Universal Filter Mount w/ 3.5" Inlet/Outlet	9552
3.5"	6"	Tube Adapter	9620
3.5"	6"	MAF Tube w/ 9700 Hitachi Plate	9621
3.5"	6"	MAF Tube w/ 9720 Blank Plate	9639
3.5"	6"	Universal Filter Mount w/ 3.5" Inlet/Outlet	9552
4"	6"	Tube Adapter	9640
4"	6"	MAF Tube w/ 9700 Hitachi Plate	9641
4"	6"	MAF Tube w/ 9720 Blank Plate	9659
---	---	Universal Bolt-In MAF Sensor Plate - Hitachi	9701
---	---	MAF Sensor Plate - Hitachi	9700
---	---	MAF Sensor Plate - Blank	9720
---	---	95mm Mass Air Adapter	160-643

Hose Clamps, Brackets and Hoses



Roto-Molded Carburetor Hats



Real Carbon Fiber Carburetor Hats



MAF & Tube Adapters



MAF Sensor Plates



95mm Mass Air Adapter



Adjustable Tube Bracket



Products listed with an EO number are legal for use in all 50 States. Products without an EO number are not legal for use on any pollution-controlled motor vehicle registered for street use in the state of California or in other states that have adopted California emissions standards. Please visit our website for the most up to date information on the emissions status of individual products.

# UNIVERSAL COMPONENTS

## A-BODY / F-BODY / NEW UNIVERSAL BOX

Designed to be used in conjunction with AIRAID's other UBI system components, AIRAID's A-Body and F-Body speci c Cold Air Dam systems allow the air lter to be mounted on either the driver or passenger side of the engine compartment. The metal Cold Air Dam design helps the air lter isolated from hot engine compartment air while allowing the engine to breath in plenty of cold, fresh outside air. The built-in velocity stack further promotes air ow, and different versions of the kit can accommodate 3", 3.5", and 4" intake tubes. The kit also includes an oversized air lter that utilizes AIRAID's SynthaFlow® oiled lter media.

The AIRAID® universal air box is the solution for those that want a more sealed air box design. The universal air box helps protect the lter from contaminants such as mud and water in off-road applications, and its large single inlet can be easily adapted to pull air from a fenderwell, core support, or any other location that offers a steady supply of cool outside air. Like the Cold Air Dam panels, the universal air box includes a velocity stack and a premium SynthaFlow® oiled lter.

Universal Box  
Part Number 100-262



Filter Adapter OD	Description	P/N
3"	Filter Mount w/ 6" Filter Inlet	100-201
3.5"	Filter Mount w/ 6" Filter Inlet	100-202
4"	Filter Mount w/ 6" Filter Inlet	100-203
3"	GM 1968-72 A-Body Kit w/ 3" lter adaptor PS	100-259
3"	GM 1968-72 A-Body Kit w/ 3" lter adaptor DS	100-256
3.5"	GM 1968-72 A-Body Kit w/ 3.5" lter adaptor DS	100-257
3.5"	GM 1968-72 A-Body Kit w/ 3.5" lter adaptor PS	100-260
4"	GM 1968-72 A-Body Kit w/ 4" lter adaptor DS	100-258
4"	GM 1968-72 A-Body Kit w/ 4" lter adaptor PS	100-261
3"	GM 1967-69 F-Body Kit w/ 3" lter adaptor PS	100-253
3"	GM 1967-69 F-Body Kit w/ 3" lter adaptor DS	100-250
3.5"	GM 1967-69 F-Body Kit w/ 3.5" lter adaptor DS	100-251
3.5"	GM 1967-69 F-Body Kit w/ 3.5" lter adaptor PS	100-254
4"	GM 1967-69 F-Body Kit w/ 4" lter adaptor DS	100-252
4"	GM 1967-69 F-Body Kit w/ 4" lter adaptor PS	100-255
---	Sealed Intake Air Box w / MAF Adapters	100-262
3.5"	Universal Filter Mount w/ 3.5" Inlet/Outlet	100-211
4"	Universal Filter Mount w/ 4" Inlet/Outlet	100-212

1968-1972 A-Body  
Driver side  
Part Number 100-256

1967-1969 F-Body  
Driver Side  
Part Number 100-250

## SPECIALTY LS FILTERS

Whether it's an LS1 going in a street rod or an LS7 going in a sand buggy, the GM LS engine family is the powerplant swap of choice among many automotive enthusiasts. AIRAID® has released a line of specialty filters that address many of the unique induction needs of an LS swap, making it easier than ever before to make LS engines work in custom applications.

AIRAID's new line of specialty LS filters are designed to clamp right on to the throttle body of the LS engine, which simplifies the induction system and makes for a compact, easy-to-use package. Filters are available with a standard 3.875" flange to match a factory throttle body, or with a 4.25" flange that is compatible with most aftermarket throttle bodies. The filters feature an extra-thick flange to better withstand heavy vibrations and a built-in velocity stack to increase airflow. There are even built-in provisions to mount an IAT (Intake Air Temperature) sensor on the filter assembly, which is commonly needed on LS applications.

The filters are sized to provide excellent air flow to the engine while maintaining a compact footprint to work with tight engine compartment applications where space is at a premium. Due to the location of the filter on the front of the engine, AIRAID® also offers an optional shield to help protect the filter from dirt and debris while further reinforcing the filter mount.

Like AIRAID's universal filters, the new LS specialty filters are available with traditional oiled filter media in red or SynthaMax® dry media in red, blue, or black.



*Washable and Reusable  
Hand Poured Urethane  
Also Available in Dry Black*



**Built-in provision to mount an IAT (Intake Air Temperature) sensor**



3.875"	7" x 5"	6"	Cone Air Filter; Oiled Red; GM Throttle Body w/heat shield;	700-580
3.875"	7" x 5"	6"	Cone Air Filter; Oiled Red; GM Throttle Body w/o heat shield;	700-581
4..25"	7" x 5"	6"	Cone Air Filter; Oiled Red ; Aftermarket Throttle Body w/heat shield;	700-582
4..25"	7" x 5"	6"	Cone Air Filter; Oiled Red; Aftermarket Throttle Body w/o heat shield;	700-583
3.875"	7" x 5"	6"	Cone Air Filter; SynthaMax Dry; Red; GM Throttle Body w/heat shield;	701-580
3.875"	7" x 5"	6"	Cone Air Filter; SynthaMax Dry; Red; GM Throttle Body w/o heat shield;	701-581
4..25"	7" x 5"	6"	Cone Air Filter; SynthaMax Dry Red; Aftermarket Throttle Body w/heat shield;	701-582
4..25"	7" x 5"	6"	Cone Air Filter; SynthaMax Dry Red; Aftermarket Throttle Body w/o heat shield;	701-583
3.875"	7" x 5"	6"	Cone Air Filter; SynthaMax Dry Black; GM Throttle Body w/heat shield;	702-580
3.875"	7" x 5"	6"	Cone Air Filter; SynthaMax Dry Black; GM Throttle Body w/o heat shield;	702-581
4..25"	7" x 5"	6"	Cone Air Filter; SynthaMax Dry Black; Aftermarket Throttle Body w/heat shield;	702-582
4..25"	7" x 5"	6"	Cone Air Filter; SynthaMax Dry Black; Aftermarket Throttle Body w/o heat shield;	702-583
3.875"	7" x 5"	6"	Cone Air Filter; SynthaMax Dry Blue; GM Throttle Body w/heat shield;	703-580
3.875"	7" x 5"	6"	Cone Air Filter; SynthaMax Dry Blue; GM Throttle Body w/o heat shield;	703-581
4..25"	7" x 5"	6"	Cone Air Filter; SynthaMax Dry Blue; Aftermarket Throttle Body w/heat shield;	703-582
4..25"	7" x 5"	6"	Cone Air Filter; SynthaMax Dry Blue; Aftermarket Throttle Body w/o heat shield;	703-583

Products listed with an EO number are legal for use in all 50 States. Products without an EO number are not legal for use on any pollution-controlled motor vehicle registered for street use in the state of California or in other states that have adopted California emissions standards. Please visit our website for the most up to date information on the emissions status of individual products.



# SPECIALTY

## RACE DAY • TRACK DAY

High-performance engines have enormous airflow needs, and racers are always looking for a little something extra that will give them an edge over the competition. AIRAID®'s new track day and race day filters were built with racers in mind. Track day filters are designed to provide excellent airflow while maintaining particulate protection. Race day filters are for those where airflow is the main priority, but still want protection from large debris.

Track day filters feature the same quality construction as our regular air filters, including sturdy polyurethane casings, wire mesh construction, and layers of high flow cotton gauze. They are designed to provide low restriction airflow while still maintaining adequate filtration. Track day filters are shipped dry but can be oiled by the end user if desired.

Race day filters are designed strictly to keep large debris out of the engine. Constructed with sturdy polyurethane casings and a durable wire mesh screen, they are built without any filtration media. Race day filters are intended for race day only and should only be used at on concrete or asphalt racing surfaces such as a drag strip or road course.

Both track day and race day filters are manufactured in the USA and are backed by a 90-day warranty. These filters are not intended for street use and are not recommended for any off-the-shelf cold air intake system that will be used in anything other than a controlled racing environment.



**NOTE:**  
Please refer to the  
CONE FILTERS section  
on page 42 for sizing  
information.

### RACE DAY FILTERS

700-030RD	700-456RD	700-497RD	720-476RD
700-031RD	700-457RD	700-498RD	720-477RD
700-032RD	700-458RD	700-499RD	720-478RD
700-420RD	700-461RD	700-539RD	720-479RD
700-421RD	700-462RD	700-540RD	720-500RD
700-422RD	700-466RD	720-127RD	800-306RD
700-430RD	700-469RD	720-128RD	800-307RD
700-433RD	700-470RD	720-242RD	800-350RD
700-445RD	700-471RD	720-243RD	800-377RD
700-450RD	700-474RD	720-440RD	800-403RD
700-451RD	700-491RD	720-448RD	800-404RD
700-452RD	700-493RD	720-472RD	800-414RD
700-453RD	700-494RD	720-473RD	
700-455RD	700-496RD	720-475RD	

### TRACK DAY FILTERS

700-030TD	700-456TD	700-497TD	720-476TD
700-031TD	700-457TD	700-498TD	720-477TD
700-032TD	700-458TD	700-499TD	720-478TD
700-420TD	700-461TD	700-539TD	720-479TD
700-421TD	700-462TD	700-540TD	720-500TD
700-422TD	700-466TD	720-127TD	800-350TD
700-430TD	700-469TD	720-128TD	800-357TD
700-433TD	700-470TD	720-242TD	800-377TD
700-445TD	700-471TD	720-243TD	
700-450TD	700-474TD	720-440TD	
700-451TD	700-491TD	720-448TD	
700-452TD	700-493TD	720-472TD	
700-453TD	700-494TD	720-473TD	
700-455TD	700-496TD	720-475TD	

*Colorfast Dye Won't Fade  
Non-Oiled Technology  
Completely Customizable*



Hidden stud with flush mount lock down utilizing a 3/8" Hex Key



AIRAID® offers a modern approach to the standard 14" performance air cleaner. The concept II is a universal air filter assembly that is available in 3", 4" and 5" elements and is completely customizable.

Concept II is constructed of hand poured urethane that won't crack or shrink due to under hood heat. The filter is designed with extra deep pleats for more dirt holding capacity, which extends service intervals, and comes with SynthaMax® dry a 100% synthetic, non-oiled, color fast, iconic performance red media.

The most unique feature of the concept II is the beautiful lightweight aluminum lid which can be completely customized. The curved top enhances air flow and provides additional clearance for the carburetor float bowl vents, which is ideal for applications with minimal hood clearance. Along with the re-designed lid, the concept II also features a new base that enhances air flow and includes a billet tool & key fob! The concept II is "Conceptually" the perfect finishing touch to your custom ride!

### CONCEPT II

Product #	Product Description	Installed Height
801-451	Universal 3" Assembly	3.2"-.5" drop base
801-455	Universal 4" Assembly	4.2"-.5" drop base
801-461	Universal 5" Assembly	5.2"-.5" drop base

### ADDED PROTECTION

AIRAID® pre-filters are highly recommended for applications that are used in extremely dirty environments. The AIRAID® pre-filters are manufactured from a durable water resistant polyester material. With uniform micro openings that help filter out debris, dyno & flowbench testing has proven no significant loss in power or airflow using this product.



Top"	Height"	Fits AIRAID®		CONE FILTERS
		Pre-Filter	Filter	
4.625"	9"	799-420	700-410, 700-420, 700-421, 700-470, 700-471	
3.5"	7"	799-430	700-430, 700-433	
5"	7.5"	799-445	700-445, 700-462	
4.625"	6"	799-450	700-450, 700-455, 700-493, 700-452	
5"	9"	799-469	700-469	
9" x 4.5"	7.375"	799-128	720-128	
6" x 3.25"	5"	799-440	720-431, 720-440	
4.625"	7"	799-456	700-451, 700-456, 700-457, 700-458, 700-494	
7.25" x 4.25"	9"	799-472	720-472	
7.9" x 5.0"	7.5"	799-478	720-478	
6.3" x 3.8"	8"	799-242	720-242	
6.3" x 3.8"	7"	799-479	720-479	
3.9"	7"	799-411	700-411	
4.3"	7"	799-495	700-495	
5"	6"	799-466	700-466	
5.25" x 2.25"	10.5" x 7.25"	799-473	720-473	
6.25" x 3.75"	9" x 7.5"	799-479	720-479	
N/A	N/A	799-352	XP900 Only	

Height"	Fits AIRAID®		ROUND FILTERS
	Pre-Filter	Filter	
1.5"	799-137	770-132, 770-133, 770-134, 770-136, 770-137, 771-480	
2.5"	799-147	770-138, 770-141, 770-143, 770-145, 770-147, 771-490, 771-495	
3"	799-350	800-350, 800-351	
4"	799-377	800-375, 800-377	



# SIDE X SIDE PERFORMANCE PRODUCTS

UTVs have taken the off-road market by storm, with performance attributes that rival those of Jeeps and other compact 4x4s. UTVs are also popular with the go-fast crowd, as their independent suspension and excellent power-to-weight ratios make them well suited to bombing down fire roads. The common denominator for side x sides is dirt, which means good filtration is critical to keeping contaminants from entering the engine and transmission. AIRAID® has developed a line of performance intake systems that improve horsepower and torque while providing excellent side x side protection to vulnerable engine components.

AIRAID® intake systems start with an AIRAID® premium filter to increase airflow and provide better filtration in dusty environments. The filter also increases service intervals for more ride time with less maintenance. AIRAID® addresses restrictions in the factory air box by replacing it with a new one-piece roto-molded air box on many applications. These air boxes help increase the amount of cold fresh air available for significant power gains. AIRAID® side x side intake kits have been dyno-tested to provide estimated increases of up to 4 horsepower!

- Bolt-On Horsepower
- High Flow Filters
- Made In The USA
- No-Hassle Warranty

## KAWASAKI TERYX 750

The AIRAID® Kawasaki Teryx 750 intake system dramatically increases airflow over the stock system while improving overall power and performance. In fact, dyno tests show estimated increases of up to 4 HP over the stock system!

The Teryx 750 system comes with an AIRAID® premium oiled filter as well as a pre-filter for extreme conditions. The filter is sealed safely inside a roto-molded air box with a strategically located inlet that improves airflow. No additional tuning is required, and detailed step-by-step instructions are included for installation.



P/N 883-274

**BOLT-ON PERFORMANCE INTAKES, FILTERS & PRE-FILTERS**

## CAN-AM COMMANDER 1000

The AIRAID® intake system for the 1000cc Can-Am Commander improves power and performance while offering superior filtration over the factory intake. The AIRAID® system utilizes a completely new air box that features a reversed hood scoop lid with a foam pre-filter. The hood scoop protrudes through the hood and provides cold air a larger, more direct route to the engine than the restrictive factory system.

Inside the air box is an oversized AIRAID® premium oiled filter, which extends service intervals while capturing contaminants that the stock filter could allow to pass through. The filter is washable and reusable, and it's backed by AIRAID®'s exclusive "no hassle" lifetime warranty!



P/N 883-314

P/N 700-492  
Kit Replacement Filter

P/N 883-300



## POLARIS RANGER RZR XP 900

The Polaris Ranger RZR 900XP AIRAID® intake system delivers more horsepower with the added benefit of less required maintenance. The system starts with an AIRAID® oiled power curve air filter, which has a concave shape to unshroud the factory velocity stacks for improved airflow.

The unique AIRAID® snorkel system allows the engine and CVT transmission to draw air from up high, away from water and trail dust. The specially molded snorkels attach to the air box and CVT transmission via large 3" diameter tubes and silicone couplers secured with stainless steel clamps. The AIRAID® intake system is completely bolt-on and comes with all of the hardware needed for installation along with detailed instructions. No additional tuning is needed; just bolt it on and ride!



### CAN-AM MAVERICK 1000

AIRAID® once again created a winning combination with the new performance intake system for the 1000cc Can Am Maverick. This new intake system improves power and performance while offering superior filtration over the factory intake. The AIRAID® system utilizes a completely new air box that features a reversed hood scoop lid with a foam pre-filter. The hood scoop protrudes through the hood and gives the Maverick a bold aggressive look while providing cold air a larger, more direct route to the engine than the restrictive factory system.

Inside the air box is an oversized AIRAID® premium oiled filter, which extends service intervals while capturing contaminants that the stock filter would allow to pass through. The filter is washable and reusable, and it's backed by AIRAID's "no hassle" lifetime warranty!



P/N 883-290

P/N 700-492  
Kit Replacement Filter



### TERYX 750

AIRAID® has developed a cold air intake system with a snorkel option for the Kawasaki Teryx4-750 that improves both power and filtration.

This AIRAID® Intake System starts with a new Cold Air Dam intake box that attaches to the factory intake tube. The box features a reverse-facing scoop, which enables the engine to draw plenty of cool air through a large 800cfm air filter.

This system also has a unique snorkel option that attaches to the air box via a silicone hose secured and stainless steel clamps. The snorkel places the air inlet up high, away from water and dust, and is an exact-fit for the Teryx4-750. No additional tuning is needed; just bolt it on and ride!



P/N 883-315



P/N 883-275

### POLARIS RANGER XP 700 & 800

AIRAID® has developed a snorkel system for the popular Polaris Ranger 700XP and 800XP EFI that delivers more power while providing an easy way to keep the engine's air intake high and dry.

The roto-molded snorkel relocates the engine's air intake to the top of the rollcage, which offers protection and provides the engine with a steady supply of cold air. The snorkel assembly nests against the rollcage and attaches to the factory airbox via a specially molded coupler with a 3" diameter silicone hose.

The AIRAID® system includes a massive cylindrical air filter that is a direct replacement for the stock paper filter element. Constructed with AIRAID's oiled composite media, the filter extends service intervals to offer increased ride time. The filter is available with the snorkel system, or as a stand-alone item. Like the rest of AIRAID's product line, the Ranger systems are Made in the USA.



P/N 799-352



P/N 800-029

(Oiled)



P/N 883-305

**AIRAID® ALSO OFFERS SNORKEL KITS FOR SELECT APPLICATIONS!**

Products listed with an EO number are legal for use in all 50 States. Products without an EO number are not legal for use on any pollution-controlled motor vehicle registered for street use in the state of California or in other states that have adopted California emissions standards. Please visit our website for the most up to date information on the emissions status of individual products.

Products listed with an EO number are legal for use in all 50 States. Products without an EO number are not legal for use on any pollution-controlled motor vehicle registered for street use in the state of California or in other states that have adopted California emissions standards. Please visit our website for the most up to date information on the emissions status of individual products.



**THE HELIX BORE IS THE SECRET!**

Developed to enhance off-idle torque from 800 rpm to approximately 3,000 rpm, PowerAid's unique, patented helix bore design spins the incoming air charge as it passes through the throttle body spacer. This spinning action boosts the velocity of the incoming air and contributes to better atomization of the air/fuel mixture as the air charge enters the combustion chamber. The end result is more part-throttle torque, improved mid-range power, and overall combustion efficiency.

Patented Helix Bore Design

Anodized Billet Aluminum



High Grade Steel Hardware

Gaskets Included

**SPACERS WITH POWERPORTS**

These spacers were specifically designed with the performance enthusiast in mind. The "-P" on the end of the part number designates that these PowerAid throttle body spacers are equipped with our PowerPorts™ option. The PowerPorts™ are specially located ports that allow for the use of owner-supplied power enhancements or instrumentation sensors. PowerAid throttle body spacers come complete with all mounting hardware, port block-off plugs, and easy-to-follow instructions.

	Year	Engine	PowerAid*	CARB E.O.#^
Enclave	08-13	3.6L	200-630-1	D-609-10
Rainier	04-05	4.2L	200-586	
	04-05	5.3L	200-555	
ATS	2013	3.6L	200-630-1	D-609-10
CTS	08-13	3.0L & 3.6L	200-630-1	D-609-10
Escalade, ESV, EXT	1999	5.7L	200-520	D-520-3
	2000	5.7L	200-520	
	2002	6.0L	200-612-P	
	02-06	5.3L & 6.0L	200-512-1	D-609-3
07-13	6.0L & 6.2L	200-617	D-609-10	
	2014	6.2L	200-617	
Avalanche 1500/2500	02-03	5.3L	200-612-P	
	02-06	5.3L & 8.1L	200-512-1	D-609-3
	07-13	5.3L & 6.0L	200-617	D-609-3
Blazer S-series	86-90	2.8L	200-582	D-609
	87-93	4.3L	200-581	D-609
	96-04	4.3L	200-580	D-609
	2005	4.3L	200-580	
Camaro	85-92	5.0L	200-522	
	85-92	5.7L	200-522	D-609
	10-14	3.6L	200-630-1	D-609-10
	2015	3.6L	200-630-1	
	10-14	6.2L	250-634	D-609-10
2015	6.2L	250-634		
Colorado	04-09	2.8L & 2.9L	200-585-1	D-609-10
Corvette	85-91	5.7L TPI	200-522	D-609
Equinox	08-09	3.6L	200-630-1	D-609-10
Impala	99-04	3.8L	200-584	D-609
Lumina	96-99	3.1L	200-583	D-609
Malibu	08-11	3.6L	200-630-1	D-609-10
S10 Pickup	86-90	2.8L	200-582	D-609
	87-93	4.3L	200-581	D-609
	94-95	4.3L	200-540	D-609
	96-04	4.3L	200-580	D-609
	99-01	2.2L	200-589	D-609
Pickup C/K & R/V	87-95	4.3L, 5.0L & 5.7L	200-540	D-609
1500/2500/3500	91-95	7.4L	200-550	D-609
	96-00	4.3L	200-580	D-609
	96-00	5.0L & 5.7L	200-520	D-609
	96-00	7.4L	200-530	D-609
Silverado 1500/HD	01-07*	4.3L	200-615	D-609-3
	99-03	4.8L, 5.3L, & 6.0L	200-612-P	
	99-07*	4.8L, 5.3L & 6.0L	200-512-1	D-609-3
	07-13	4.3L	200-585-1	D-609-10
	07-13	4.8L, 5.3L, 6.0L & 6.2L	200-617	D-609-10
	14-15	5.3L	200-543	
2500/3500 & HD	99-07*	5.3L, 6.0L & 8.1L	200-512-1	D-609-3
	07-13	6.0L Mech. Fan	200-606	D-609-10

	Year	Engine	PowerAid*	CARB E.O.#^
	14-15	6.0L	200-606	
	2001	6.6L Duramax LB7 only	200-557	
	02-04	6.6L Duramax LB7 only	200-557	D-609
Suburban C/K, R/V 1500/2500	87-95	5.7L	200-540	D-609
	92-95	7.4L	200-550	D-609
Suburban 1500	96-99	5.7L	200-520	D-609
	00-03	5.3L	200-612-P	
	00-07*	5.3L, 6.0L & 8.1L	200-512-1	D-609-3
	07-13	5.3L & 6.0L	200-617	D-609-10
2015	5.3L	200-543		
Suburban 2500	99-03	6.0L	200-612-P	
	00-07*	6.0L & 8.1L	200-512-1	D-609-3
	07-13	6.0L Mech. Fan	200-606	D-609-10
Tahoe	96-99	5.7L	200-520	D-609
	00-06	4.8L & 5.3L	200-512-1	D-609-3
	99-03	4.5L & 5.3L	200-612-P	
07-13	4.8L, 5.3L, 6.0L & 6.2L	200-617	D-609-10	
	2015	5.3L	200-543	
Trailblazer/EXT	02-09	4.2L	200-586	D-609-3
	03-04	5.3L	200-555	D-609
Traverse	06-08	5.3L	200-606	D-609-10
	08-11	3.6L	200-630-1	D-609-10
Aspen	07-08	5.7L	300-577	D-609-3
	2009	5.7L	300-631-1	
PT Cruiser	01-09	2.0 & 2.4L Non-Turbo	300-568	D-609-3
	11-14	3.6L	300-637	D-609-10
	2015	3.6L	300-637	
300	05-09	5.7L & 6.1L	350-532	D-609-10
	2010	6.1L	350-635	
	10-13	5.7L & 6.4L	350-532	D-609-10
	Voyager	87-00	3.0L & 3.8L	300-561
Avenger	11-14	3.6L	300-637	
Caravan	87-00	3.0L & 3.8L	300-561	D-609
Challenger	08-09	5.7L & 6.1L	350-532	D-609-10
	2010	6.1L	350-635	
	10-13	5.7L & 6.4L	350-532	D-609-10
	11-14	3.6L	300-637	D-609-10
2015	3.6L	300-637		
Charger	06-09	5.7L & 6.1L	350-532	D-609-3
	2010	6.1L	350-635	

\* Classic Body Style



P/N 200-583

Products listed with an EO number are legal for use in all 50 States. Products without an EO number are not legal for use on any pollution-controlled motor vehicle registered for street use in the state of California or in other states that have adopted California emissions standards. Please visit our website for the most up to date information on the emissions status of individual products.

\*Products listed with an EO number are legal for use in all 50 States. Products without an EO number are not legal for use on any pollution-controlled motor vehicle registered for street use in the state of California or in other states that have adopted California emissions standards. Please visit our website for the most up to date information on the emissions status of individual products.



**PATENTED HELIX BORE DESIGN HELPS IMPROVE THROTTLE RESPONSE AND INCREASE LOW-END TORQUE!**



	Year	Engine	PowerAid*	CARB E.O.#^
	05-07	4.7L	310-509	
	07-09	3.7L	310-618	D-609-10
	11-14	3.6L	300-637	D-609-10
Commander	07-09	3.7L	310-618	D-609-10
SRT8	06-09	6.1L	350-532	D-609-10
	2010	6.1L	350-635	
Liberty	02-03	3.7L	310-506	D-609
	04-06	3.7L	310-508	D-609
	07-12	3.7L	310-618	D-609-10
Wrangler	91-02	2.5L	310-511	D-609
	91-06	4.0L	310-510	D-609
	07-11	3.8L	310-616	D-609-10
	12-14	3.6L	300-637	D-609-10
	2015	3.6L	300-637	
Navigator	98-99	5.4L	400-591	
	07-13	5.4L	400-531	D-609-10
Mark LT	06-08	5.4L 24V	400-531	D-609-10
LX470	98-02	4.7L	510-566	D-609
Eclipse	94-01	2.0L	540-539-P	
Raider	07-09	3.7L	310-618	D-609-10
	06-07	4.7L	300-574	D-609-3
Armada	04-13	5.6L	520-538	D-609-10
	2014	5.6L	520-538	
Frontier	99-04	3.3L	520-505	D-609
	05-13	4.0L	520-605	D-609-10
	14-15	4.0L	520-605	
Path nder	05-12	4.0L	520-605	D-609-10
Titan	04-13	5.6L	520-538	D-609-10
	2014	5.6L	520-538	
Xterra	00-04	3.3L	520-505	D-609
	05-13	4.0L	520-605	D-609-10

	Year	Engine	PowerAid*	CARB E.O.#^
	14-15	4.0L	520-605	
Bravada	02-04	4.2L	200-586	
	96-01	4.3L	200-580	
Voyager	87-00	3.0 & 3.8L	300-561	D-609
Firebird	85-92	5.7L	200-522	D-609
Grand Prix	99-04	3.8L	200-584	D-609
GTO	2004	5.7L	200-512-1	D-609-3
	2004	5.7L	200-612-P	
	05-06	6.0L	200-606	D-609-10
G6 GXP	08-09	3.6L	200-630-1	D-609-10
Torrent GXP	08-09	3.6L	200-630-1	D-609-10
G8	08-09	3.6L	200-630-1	D-609-10
9-7X	05-08	4.2L	200-586	D-609-3
Outlook	08-09	3.6L	200-630-1	D-609-10
Vue XR	08-09	3.6L	200-630-1	D-609-10
TC	05-09	2.4L	510-608	D-609-3
XB	08-09	2.4L	510-608	D-609-3
Equator	09-12	4.0L	520-605	
XL7	08-09	3.6L	200-630-1	D-609-10
4Runner	96-02	3.4L	510-502	D-609
	2004	4.7L	510-537	D-609
	05-09	4.0L	510-624	D-609-10
	10-15	4.0L	510-628	
Camry	03-09	2.4L	510-608	D-609-3
FJ Cruiser	07-09	4.0L	510-624	D-609-10
	10-14	4.0L	510-628	
Land Cruisier	98-02	4.7L	510-566	D-609

	Year	Engine	PowerAid*	CARB E.O.#^
Sequoia	01-02	4.7L	510-566	D-609
	05-06	4.7L	510-607	D-609
	08-14	5.7L	510-621	D-609-10
Tacoma	95-02	3.4L	510-502	D-609
	03-04	3.4L	510-503	D-609
	05-13	4.0L	510-624	D-609-10
	14-15	4.0L	510-624	

	Year	Engine	PowerAid*	CARB E.O.#^
Tundra	00-02	4.7L	510-566	D-609
	03-04	4.7L	510-537	D-609
	05-06	4.7L	510-607	D-609
	07-14	5.7L	510-621	D-609-10
	07-08	4.7L	510-622	
	10-14	4.6L	510-621	D-609-10



P/N 400-614



P/N 400-591



P/N 350-532



P/N 510-624

**POWERAID® TECHNOLOGY FOR CARBURETORS**

The Poweraid® throttle body spacer works awesome on carbureted engines with its patented helix bore design, which creates a spinning action of the incoming air. By

amplifying the flow of the incoming air charge, a more efficient fuel-air mixture is achieved which boosts off-idle and mid-range torque.



4 BBL HOLLEY 4150/4160 Series Edelbrock Square Flange & OE Square Flange  
100-701 • CARB #D-609



2 bbl Holley 2300 Series Motorcraft OE  
100-702 • CARB #D-609



Holley Spread Bore, Edelbrock Quadrajet, OE Spread Bore  
100-705 • CARB #D-609

\*Products listed with an EO number are legal for use in all 50 States. Products without an EO number are not legal for use on any pollution-controlled motor vehicle registered for street use in the state of California or in other states that have adopted California emissions standards. Please visit our website for the most up to date information on the emissions status of individual products.

\*Products listed with an EO number are legal for use in all 50 States. Products without an EO number are not legal for use on any pollution-controlled motor vehicle registered for street use in the state of California or in other states that have adopted California emissions standards. Please visit our website for the most up to date information on the emissions status of individual products.

# SAVE \$\$\$\$



The ECONOAID® Throttle Body Booster is a non-moving aluminum plate that is mounted between the vehicle's throttle body and intake manifold. The PATENTED (US Pat. #7,665,442), .032" thin plate is made of 5052-H32 aluminum which is stamped and formed with CNC equipment that shapes and contours the unique air-directing vanes. ECONOAID® Throttle Body Booster Spins the incoming air as it passes through the engine's throttle body and over the multitude of ECONOAID® blades.

The turbulent air charge is carried into the engine's cylinders for better atomization and more complete combustion! The ECONOAID® Throttle Body Booster will give the vehicle a crisper throttle response and can improve engine efficiency. The efficiency improvements of the ECONOAID® will always vary depending on vehicle type, driving habits, age of the vehicle, and driving environment, among other factors. However, the average vehicle will produce an extra 6-10 lb.-ft. of torque, which can be felt from the increased low-end throttle response. All EconoAid®'s are made in the U.S.A.

- *Increases Low-End Torque & Throttle Response*
- *Easy Bolt-On Installation*
- *Money Back Guarantee*



## With The ECONOAID Throttle Body Booster



	Year	Engine	EconoAid®	CARB E.O.# <sup>^</sup>
Enclave	08-13	3.6L	1023	D-609-16
ATS	13-14	3.6L	1023	D-609-16
CTS	08-14	3.0L & 3.6L	1023	D-609-16
SRX	12-14	3.6L	1023	D-609-16
Escalade	99-00	350	1018	
	02-06	5.3L & 6.0L	1005	D-520-4
	07-08	6.2L	1001	D-520-4
	09-14	6.2L	1001	D-609-16
Avalanche	02-06	5.3L & 8.1L	1005	D-520-4
	07-08	5.3L & 6.0L	1001	D-520-4
	09-12	5.3L & 6.0L	1001	D-609-16
Camaro	98-02	5.7L	1005	D-520-4
	10-15	3.6L	1023	D-609-16
	10-15	6.2L	1001	D-609-16
Colorado	09-12	5.3L	1001	D-609-16
Corvette	97-04	5.7L	1005	D-520-4
	05-13	6.0L & 6.2L	1001	D-609-16
Equinox	12-14	3.6L	1023	D-609-16
Impala	12-14	3.6L	1023	D-609-16
Malibu	08-12	3.6L	1023	D-609-16
Pickup C/K & R/V	87-95	5.0L & 5.7L	1008	D-520-4
	96-99	5.0L	1018	
	96-99	5.7L	1018	D-520-4
	96-00	7.4L	1005	D-520-4
Silverado	99-07*	4.8L, 5.3L, 6.0L & 8.1L	1005	D-520-4
	01-07*	4.3L	1018	D-520-4
	07-13	4.3L	1023	D-609-16
	07-13	4.8L, 5.3L, 6.0L & 6.2L	1001	D-609-16
Suburban	96-99	5.7L	1018	D-520-4

	Year	Engine	EconoAid®	CARB E.O.# <sup>^</sup>
Suburban	00-06	5.3L, 6.0L & 8.1L	1005	D-520-4
	07-08	5.3L & 6.0L	1001	D-520-4
	09-13	5.3L & 6.0L	1001	D-609-16
SSR	05-06	6.0L	1001	D-609-16
Tahoe	96-00	5.7L	1018	D-520-4
	00-06	4.8L & 5.3L	1005	D-520-4
	07-08	4.8L, 5.3L & 6.0L	1001	D-520-4
	09-13	4.8L, 5.3L & 6.0L	1001	D-609-16
Trailblazer	03-04	5.3L	1005	D-520-4
	05-09	5.3L & 6.0L	1001	D-609-16
Traverse	08-14	3.6L	1023	D-609-16
200	12-14	3.6L	1022	D-609-16
300C	05-15	5.7L & 6.1L	1003	D-609-16
	12-15	3.6L	1022	D-609-16
Aspen	08-09	4.7L	1022	D-520-4
	07-09	5.7L	1003	D-609-16
Avenger	12-14	3.6L	1022	D-609-16
Caravan	12-14	3.6L	1022	D-609-16
Challenger	08-15	5.7L, 6.1L & 6.4L	1003	D-609-16
	12-15	3.6L	1022	D-609-16
Charger	06-15	5.7L, 6.1L & 6.4L	1003	D-609-16
	12-15	3.6L	1022	D-609-16
Dakota	92-03	5.2L & 5.9L	1010	D-520-4
	03-06	4.7L	1011	D-520-4
	08-11	4.7L	1022	D-609-16
Durango	98-03	5.2L & 5.9L	1010	D-520-4
	03-06	4.7L	1011	D-520-4
	08-09	4.7L	1022	D-609-16

\* Classic Body Style

<sup>^</sup>Products listed with an EO number are legal for use in all 50 States. Products without an EO number are not legal for use on any pollution-controlled motor vehicle registered for street use in the state of California or in other states that have adopted California emissions standards. Please visit our website for the most up to date information on the emissions status of individual products.







	Year	Engine	OE Replacement Filter	
			Oiled	Dry
	1985	V6 231 3.8L (VIN 3)	800-870	801-870
Electra 225	1977	V8 350 5.7L 4 bbl (VIN J)	800-315	801-315
Electra	78-79	V8 350 5.7L & 403 6.6L	800-350	801-350
	1968	V8 430 7.0L	800-350	801-350
Electra 225	1977	V8 350 5.7L & 403 6.6L	800-350	801-350
	70-76	V8 455 7.5L	800-350	801-350
Estate Wagon	1980	V8 350 5.7L 4 bbl (VIN R&X)	800-315	801-315
	81-83	V8 307 5.0L 4 bbl (VIN Y)	800-315	801-315
	72-79	V8 350 5.7L	800-350	801-350
	77-79	V8 403 6.6L	800-350	801-350
	70-75	V8 455 7.5L	800-350	801-350
GS 350	68-72	V8 350 5.7L	800-350	801-350
GS 400	68-69	V8 400 6.6L	800-350	801-350
GS 455	70-72	V8 455 7.5L	800-350	801-350
LeSabre	1977	V6 231 3.8L (VIN C)	800-311	801-311
	77-85	V6 231 3.8L (VIN A)	800-311	801-311
	80-84	V6 252 4.1L 4 bbl (VIN 4)	800-311	801-311
	1978	V8 305 5.0L 2 bbl (VIN U)	800-315	801-315
	1980	V8 350 5.7L 4 bbl (VIN R)	800-315	801-315
	1983	V8 305 5.0L 4 bbl (VIN H) Canada	800-315	801-315
	78-80	V8 350 5.7L 4 bbl (VIN X)	800-315	801-315
	81-90	V8 307 5.0L 4 bbl (VIN Y)	800-315	801-315
	68-79	V8 350 5.7L & 400 6.6L	800-350	801-350
	77-78	V8 403 6.6L	800-350	801-350
	70-76	V8 455 7.5L 2&4 bbl	800-350	801-350
	1982	V8 267 4.4L 2 bbl (VIN J) Canada	800-365	801-365
	1986	V6 231 3.8L (VIN 3)	800-870	801-870
	78-80	V6 231 3.8L 4 bbl Turbo (VIN 3)	800-870	801-870
	92-05	V6 231 3.8L (VIN L&K)	850-057	851-057
Luxus	1973	V8 455 7.5L	800-350	801-350
Park Avenue	91-05	V6 231 3.8L (VIN 1) SC	850-057	851-057
	91-05	V6 231 3.8L (VIN L&K)	850-057	851-057
Rainier	04-06	6 Cyl. 254 4.2L (VIN S)	800-109	801-109
	04-06	V8 325 5.3L (VIN P)	800-109	801-109
Regal	1977	V6 231 3.8L (VIN C)	800-311	801-311
	1979	V6 196 3.2L 2bbl (VIN C)	800-311	801-311
	79-87	V6 196 3.2L 2bbl (VIN A)	800-311	801-311
	1977	V8 305 5.0L 2 bbl (VIN U)	800-315	801-315
	1977	V8 350 5.7L 4 bbl (VIN L)	800-315	801-315



Part Number 800-350

	Year	Engine	OE Replacement Filter	
			Oiled	Dry
	1984	V8 307 5.0L 4 bbl (VIN H) Canada	800-315	801-315
	78-80	V8 305 5.0L 4 bbl (VIN H)	800-315	801-315
	78-80	V8 305 5.0L 4 bbl (VIN H)	800-315	801-315
	86-87	V8 307 5.0L 4 bbl (VIN Y)	800-315	801-315
	73-77	V8 350 5.7L	800-350	801-350
	73-74	V8 455 7.5L	800-350	801-350
	81-82	V8 267 4.4L 2 bbl (VIN J) Canada	800-365	801-365
	1988	V6 173 2.8L (VIN W)	800-850	801-850
	1978	V6 231 3.8L 2 bbl Turbo (VIN G)	800-870	801-870
	1983	V6 231 3.8L 4 bbl Turbo (VIN 8)	800-870	801-870
	78-82	V6 231 3.8L 4 bbl Turbo (VIN 3)	800-870	801-870
	84-85	V6 231 3.8L Turbo (VIN 9)	800-870	801-870
	86-87	V6 231 3.8L Turbo (VIN 7)	800-870	801-870
	90-93	V6 231 3.8L (VIN L)	800-890	801-890
	94-95	V6 231 3.8L (VIN L)	850-063	851-063
	94-96	V6 191 3.1L (VIN M)	850-063	851-063
	96-98	V6 231 3.8L (VIN K)	850-063	851-063
	97-98	V6 231 3.8L (VIN 1) SC	850-063	851-063
	99-04	V6 231 3.8L (VIN 1) SC	850-214	851-214
	99-04	V6 231 3.8L (VIN K)	850-214	851-214
Rendezvous	02-07	V6 204 3.4L (VIN E)	850-063	851-063
Rivera	95-99	V6 231 3.8L (VIN 1) SC	850-057	851-057
	95-97	V6 231 3.8L (VIN K)	850-057	851-057
	77-78	V8 350 5.7L 4 bbl (VIN J&X)	800-315	801-315
	77-79	V8 350 5.7L	800-350	801-350
	81-85	V8 350 5.7L DSL	800-350	801-350
	77-78	V8 403 6.6L	800-350	801-350
	1968	V8 430 7.0L	800-350	801-350
	70-76	V8 455 7.5L	800-350	801-350
	1983	V6 231 3.8L 4 bbl Turbo (VIN 8)	800-870	801-870
	79-82	V6 231 3.8L 4 bbl Turbo (VIN 3)	800-870	801-870
	84-85	V6 231 3.8L Turbo (VIN 9)	800-870	801-870
Roadmaster	94-96	V8 350 5.7L (VIN P)	850-057	851-057
Skyhawk	82-86	4 Cyl. 112 1.8L (VIN O)	800-015	801-015
	83-88	4 Cyl. 122 2.0L (VIN P&K)	800-015	801-015
	1987	4 Cyl. 122 2.0L Turbo (VIN M)	800-850	801-850
Skylark	82-91	4 Cyl. 151 2.5L (VIN R&U)	800-015	801-015
	1977	V6 231 3.8L 2 bbl (VIN C)	800-311	801-311
	1978	V6 231 3.8L 2 bbl (VIN A) Exc. Calif.	800-311	801-311
	1979	V6 231 3.8L 2 bbl (VIN A)	800-311	801-311
	1979	V8 305 5.0L 2 bbl (VIN G)	800-311	801-311
	75-76	V8 260 4.3L 2 bbl (VIN F)	800-315	801-315
	77-79	V8 350 5.7L 4 bbl (VIN L)	800-315	801-315
	1968	V8 350 5.7L	800-350	801-350
	1977	V8 350 5.7L	800-350	801-350
	1968	V8 400 6.6L	800-350	801-350
	1972	V8 455 7.5L	800-350	801-350
	1985	V6 173 2.8L (VIN W)	800-850	801-850
Somerset	86-87	4 Cyl. 151 2.5L (VIN U)	800-015	801-015
Somerset Regl.	1985	4 Cyl. 151 2.5L (VIN U)	800-015	801-015

	Year	Engine	OE Replacement Filter	
			Oiled	Dry
Special	1968	V8 350 5.7L	800-350	801-350
Sport Wagon	1968	V8 350 5.7L	800-350	801-350
	1968	V8 400 6.6L	800-350	801-350
Terraza	05-07	V6 214 3.5L (VIN 8)	850-063	851-063
Wildcat	68-70	V8 430 7.0L, 455 7.5L	800-350	801-350
Allante	87-88	V8 252 4.1L (VIN 7)	800-870	801-870
	1993	V8 279 4.6L (VIN 9)	850-057	851-057
Brougham	91-92	V8 305 5.0L (VIN E)	800-315	801-315
	1992	V8 350 5.7L (VIN 7)	800-315	801-315
	1988	V8 307 5.0L 4 bbl (VIN 9)	800-315	801-315
	1990	V8 350 5.7L (VIN 7)	800-315	801-315
	87-90	V8 307 5.0L 4 bbl (VIN 9&Y) H.O.	800-315	801-315
Cimarron	83-86	4 Cyl. 121 2.0L (VIN P)	800-015	801-015
	85-88	V6 173 2.8L (VIN W)	800-850	801-850
Comm. Chassis	88-90	V8 273 4.5L (VIN 5&3)	850-057	851-057
	91-93	V8 300 4.9L (VIN B)	850-057	851-057
	93-95	V8 350 5.7L (VIN P)	850-057	851-057
	1993	V8 350 5.7L (VIN 7)	800-315	801-315
	80-84	V8 368 6.0L 4 bbl (VIN 6)	800-315	801-315
	85-87	V8 252 4.1L F.I. (VIN 8)	800-365	801-365
CTS-V	04-07	LS-6	850-227	851-227
Deville	80-82	V6 252 4.1L 4 bbl (VIN 4)	800-311	801-311
	1980	V8 368 6.0L 4 bbl (VIN 6)	800-315	801-315
	85-87	V8 252 4.1L F.I. (VIN 8)	800-365	801-365
	88-90	V8 273 4.5L (VIN 5&3)	850-057	851-057
	91-95	V8 300 4.9L (VIN B)	850-057	851-057
	96-99	V8 279 4.6L (VIN Y&9)	850-057	851-057
	00-05	V8 279 4.6L (VIN 9)	850-063	851-063
	00-05	V8 279 4.6L (VIN Y)	850-063	851-063
Deville Cncurs	94-96	V8 279 4.6L (VIN Y&9)	850-057	851-057
Eldorado	1979	V8 350 5.7L	800-350	801-350
	79-85	V8 350 5.7L DSL	800-350	801-350
	88-90	V8 273 4.5L (VIN 5&3)	850-057	851-057
	91-93	V8 300 4.9L (VIN B)	850-057	851-057
	93-02	V8 279 4.6L (VIN 9)	850-057	851-057
	93-02	V8 279 4.6L (VIN Y)	850-057	851-057
Escalade	99-00	V8 350 5.7L (VIN R)	800-396	801-396
	02-15	V8 325 5.3L (VIN T)	850-135	851-135
	02-15	V8 365 6.0L H.O. (VIN N)	850-135	851-135
EXT & ESV	02-15	V8 365 6.0L H.O. (VIN N)	850-135	851-135
	07-15	V8 6.2L H.O.	850-135	851-135
Fleetwood	85-87	V8 252 4.1L F.I. (VIN 8)	800-365	801-365
	88-89	V8 273 4.5L (VIN 5)	850-057	851-057
	1990	V8 273 4.5L (VIN 3)	850-057	851-057
	91-92	V8 300 4.9L (VIN B)	850-057	851-057
	80-82	V6 252 4.1L 4 bbl (VIN 4)	800-311	801-311
Brougham	1980	V8 368 6.0L 4 bbl (VIN 6)	800-315	801-315
	1986	V8 307 5.0L 4 bbl (VIN Y)	800-315	801-315
	1993	V8 350 5.7L (VIN 7)	800-315	801-315



Part Number 850-057

	Year	Engine	OE Replacement Filter	
			Oiled	Dry
	94-96	V8 350 5.7L (VIN P)	850-057	851-057
Limousine	86-87	V8 252 4.1L F.I. (VIN 8)	800-365	801-365
Seville	75-77	V8 350 5.7L (VIN R)	800-350	801-350
	78-79	V8 350 5.7L (VIN B)	800-350	801-350
	80-85	V8 350 5.7L DSL (VIN N)	800-350	801-350
	88-89	V8 273 4.5L (VIN 5)	850-057	851-057
	1990	V8 273 4.5L (VIN 3)	850-057	851-057
	91-93	V8 300 4.9L (VIN B)	850-057	851-057
	93-97	V8 279 4.6L (VIN 9)	850-057	851-057
	94-97	V8 279 4.6L (VIN Y)	850-057	851-057
	98-04	V8 279 4.6L (VIN 9) STS	850-063	851-063
	98-04	V8 279 4.6L (VIN Y) STS	850-063	851-063
Sixty Special	1987	V8 252 4.1L F.I. (VIN 8)	800-365	801-365
	88-89	V8 273 4.5L (VIN 5)	850-057	851-057
	1990	V8 273 4.5L (VIN 3)	850-057	851-057
	91-93	V8 300 4.9L (VIN B)	850-057	851-057
XLR	04-09	V8 281 4.6L (VIN A)	850-063	851-063
Marathon	80-82	V6 229 3.8L 2 bbl	800-365	801-365
	81-82	V8 267 4.4L 2 bbl	800-365	801-365
Astro Van	85-90	4 Cyl. 151 2.5L (VIN E)	800-015	801-015
	1985	V6 262 4.3L 4 bbl (VIN N)	800-365	801-365
	1991	V6 262 4.3L F.I. (VIN B)	800-365	801-365
	94-96	V6 262 4.3L F.I. (VIN Z)	800-365	801-365
Astro Van	92-05	V6 262 4.3L F.I. (VIN W&X)	850-342	851-342
Avalanche	02-06	V8 325 5.3L (VIN T&Z) Incl. Flex Fuel	850-135	851-135
	02-07	V8 496 8.1L (VIN G) Vortec	850-135	851-135
	07-12	V8 325 5.3L	850-135	851-135
Bel Air	1965	V8 396 6.5L 4 bbl	800-350	801-350
	66-67	V8 327 5.4L 4 bbl	800-350	801-350
	66-67	V8 427 7.0L 4 bbl	800-350	801-350
Beretta	90-91	4 Cyl. 133 2.2L (VIN G)	800-015	801-015
Biscayne	1965	V8 396 6.5L 4 bbl	800-350	801-350
	66-67	V8 327 5.4L 4 bbl	800-350	801-350
	66-67	V8 427 7.0L 4 bbl	800-350	801-350
Blazer	68-71	V8 307 5.0L 2bbl	800-311	801-311
	1969	V8 350 5.7L	800-314	801-314
	1970	6 Cyl. 292 4.8L 1 bbl	800-311	801-311
	1972	V8 307 5.0L 2 bbl (VIN X)	800-311	801-311



**Part Number 800-311**

Year	Engine	OE Replacement Filter Oiled	Dry
1972	V8 350 5.7L 2 bbl (VIN E)	800-314	801-314
1973	V8 307 5.0L 2 bbl (VIN U)	800-311	801-311
1973	V8 454 7.4L 4 bbl (VIN Z)	800-314	801-314
73-76	V8 350 5.7L 2 bbl (VIN V)	800-314	801-314
1979	V8 305 5.0L 2 bbl (VIN U)	800-311	801-311
1980	V8 400 6.6L 4 bbl (VIN R)	800-373	801-373
80-81	V8 305 5.0L 2 bbl (VIN G)	800-311	801-311
1982	V8 305 5.0L 4 bbl (VIN F)	800-373	801-373
80-86	V8 350 5.7L 4 bbl (VIN L)	800-373	801-373
82-86	V8 305 5.0L 4 bbl (VIN H)	800-373	801-373
C/K 1500 Series	97-98 V6 262 4.3L F.I. (VIN W)	800-396	801-396
97-98	V8 395 6.5L DSL (VIN S)	800-396	801-396
97-99	V8 305 5.0L (VIN R)	800-396	801-396
97-99	V8 350 5.7L (VIN R)	800-396	801-396
C/K 2500 Series	97-00 V8 350 5.7L (VIN R)	800-396	801-396
97-00	V8 395 6.5L DSL (VIN F)	800-396	801-396
97-00	V8 454 7.4L (VIN J)	800-396	801-396
97-98	V8 305 5.0L (VIN M)	800-396	801-396
97-98	V8 395 6.5L DSL (VIN S)	800-396	801-396
C/K 3500 Series	97-00 V8 350 5.7L (VIN R)	800-396	801-396
97-00	V8 395 6.5L DSL (VIN F)	800-396	801-396
97-00	V8 454 7.4L (VIN J)	800-396	801-396
C/K Series Pckp	1966 6 Cyl. 250 4.1L (H.D.)	800-311	801-311
1969	V8 307 5.0L 2bbl	800-311	801-311
1969	V8 396 6.5L 4 bbl	800-311	801-311
1972	V8 307 5.0L 2 bbl (VIN F)	800-311	801-311
1973	6 Cyl. 292 4.8L 1 bbl (VIN T)	800-311	801-311
1973	V8 307 5.0L 2bbl (VIN X) 10 Series	800-311	801-311
C/K Series Pckp	1979 V8 305 5.0L 2 bbl (VIN U)	800-311	801-311
1980	V8 350 5.7L 2 bbl (VIN P)	800-311	801-311
65-66	6 Cyl. 292 4.8L 1 bbl w/Power Brakes	800-311	801-311
68-69	6 Cyl. 250 4.1L 1 bbl (H.D.)	800-311	801-311
68-71	6 Cyl. 292 4.8L 1 bbl	800-311	801-311
70-71	V8 307 5.0L 2 bbl (10 Series)	800-311	801-311
80-81	V8 305 5.0L 2 bbl (VIN G)	800-311	801-311
85-86	V6 262 4.3L 4 bbl (VIN N)	800-311	801-311
88-95	V6 262 4.3L 4 bbl (VIN Z)	800-311	801-311
1968	V8 396 6.5L Exc. W/ Closed PCV System	800-314	801-314
1970	V8 402 6.6L 4 bbl	800-314	801-314

Year	Engine	OE Replacement Filter	
		Oiled	Dry
1972	V8 350 5.7L 2 bbl (VIN E)	800-314	801-314
1972	V8 350 5.7L 4 bbl (VIN J)	800-314	801-314
1972	V8 402 6.6L 4 bbl (VIN U)	800-314	801-314
1973	V8 307 5.0L 2bbl (VIN X) 20/30 Series	800-314	801-314
1976	V8 305 5.0L 2 bbl (VIN Q)	800-314	801-314
69-70	V8 350 5.7L 4 bbl	800-314	801-314
1970	V8 307 5.0L 2bbl (VIN X) 20/30 Series	800-314	801-314
70-71	V8 350 5.7L 2 bbl	800-314	801-314
74-76	V8 350 5.7L 2 bbl (VIN V)	800-314	801-314
77-78	V8 305 5.0L 2 bbl (VIN U)	800-314	801-314
1968	V8 396 6.5L 4 bbl	800-350	801-350
1980	V8 400 6.6L 4 bbl (VIN R)	800-373	801-373
1980	V8 400 6.6L 4 bbl (VIN X)	800-373	801-373
1980	V8 454 7.4L 4 bbl (VIN S)	800-373	801-373
80-86	V8 350 5.7L 4 bbl (VIN L)	800-373	801-373
80-86	V8 350 5.7L 4 bbl (VIN M)	800-373	801-373
80-86	V8 454 7.4L 4 bbl (VIN W)	800-373	801-373
81-86	V8 305 5.0L 4 bbl (VIN F)	800-373	801-373
81-86	V8 305 5.0L 4 bbl (VIN H)	800-373	801-373
1996	V6 262 4.3L F.I. (VIN W)	800-396	801-396
1996	V8 305 5.0L (VIN M)	800-396	801-396
1996	V8 350 5.7L (VIN R)	800-396	801-396
1996	V8 454 7.4L (VIN J)	800-396	801-396
1996	V8 454 7.4L (VIN N)	800-396	801-396
Camaro	1970 V8 350 5.7L 4 bbl	800-314	801-314
1971	V8 350 5.7L 2 bbl (Exc. Z28)	800-314	801-314
1971	V8 402 6.6L 4 bbl	800-314	801-314
1972	V8 402 6.6L 4 bbl (VIN U)	800-314	801-314
1976	V8 305 5.0L 2 bbl (VIN Q)	800-314	801-314
69-70	V8 350 5.7L 2 bbl	800-314	801-314
72-74	V8 350 5.7L 4 bbl (VIN K) Exc. Z28	800-314	801-314
72-75	V8 350 5.7L 2 bbl (VIN K)	800-314	801-314
77-78	V8 305 5.0L 2 bbl (VIN U)	800-314	801-314
80-81	V6 231 3.8L 2 bbl (VIN A)	800-314	801-314
82-87	V8 305 5.0L 4 bbl (VIN H)	800-314	801-314
84-86	V8 305 5.0L 4 bbl (VIN G)	800-314	801-314
88-92	V8 305 5.0L F.I. (VIN E)	800-314	801-314
1967	V8 327 5.4L 4 bbl	800-350	801-350
1967	V8 350 5.7L	800-350	801-350
1968	V8 302 5.0L 2 bbl	800-350	801-350
1970	V8 402 6.6L 4 bbl Exc. SS396 H.P.	800-350	801-350
1970	V8 302 5.0L 4 bbl	800-350	801-350
67-69	V8 396 6.5L 4 bbl	800-350	801-350
71-74	V8 350 5.7L 4 bbl (VIN T) Exc. Z28	800-350	801-350
1981	V6 229 3.8L 2 bbl	800-365	801-365
1981	V8 267 4.4L 2bbl	800-365	801-365
90-92	V6 189 3.1L (VIN T)	800-890	801-890
1997	V8 350 5.7L (VIN K) (W/ Ram Air)	850-018	851-018
98-02	V6 231 3.8L (VIN K)	850-018	851-018
98-02	V8 346 5.7L (VIN G)	850-118	851-118

Year	Engine	OE Replacement Filter	
		Oiled	Dry
93-95	V6 207 3.4L (VIN S)	850-342	851-342
93-97	V8 350 5.7L (VIN P)	850-342	851-342
95-97	V6 231 3.8L (VIN K)	850-342	851-342
Caprice	1979 V8 305 5.0L 2 bbl (VIN G)	800-311	801-311
1980	V6 229 3.8L 2 bbl (VIN K)	800-311	801-311
1980	V8 267 4.4L 2bbl (VIN J) Canada	800-311	801-311
1985	V6 231 3.8L 2 bbl (VIN A) Canada	800-311	801-311
80-81	V6 231 3.8L 2 bbl (VIN A)	800-311	801-311
1968	V8 396 6.5L 4 bbl	800-314	801-314
1969	V8 396 6.5L 2 bbl	800-314	801-314
1969	V8 427 7.0L 4 bbl	800-314	801-314
85-90	V6 262 4.3L F.I. (VIN Z)	800-314	801-314
66-67	V8 327 5.4L 4 bbl	800-350	801-350
66-67	V8 427 7.0L	800-350	801-350
81-84	V6 229 3.8L 2 bbl	800-365	801-365
81-82	V8 267 4.4L 2bbl	800-365	801-365
Caprice Classic	94-96 V8 263 4.3L (VIN W)	850-057	851-057
94-96	V8 350 5.7L (VIN P)	850-057	851-057
Cavalier	83-86 4 Cyl. 121 2.0L (VIN P)	800-015	801-015
90-91	4 Cyl. 133 2.2L (VIN G)	800-015	801-015
1987	V6 173 2.8L (VIN W) W/ Steel Hood	800-850	801-850
85-86	V6 173 2.8L (VIN W)	800-850	801-850
88-89	V6 173 2.8L (VIN W) Exc. Z24	800-850	801-850
90-94	V6 189 3.1L (VIN T) Exc. Z24	800-850	801-850
1987	V6 173 2.8L (VIN W) W/ Fibrgls Hood	800-890	801-890
88-89	V6 173 2.8L (VIN W) Z24 Only	800-890	801-890
90-94	V6 189 3.1L (VIN T) Z24 Only	800-890	801-890
Celebrity	82-90 4 Cyl. 151 2.5L (VIN R)	800-015	801-015
1990	V6 189 3.1L (VIN T)	800-850	801-850
85-89	V6 173 2.8L (VIN W)	800-850	801-850
Chevelle	1971 V8 454 7.4L 4 bbl (SS w/o A/C)	800-314	801-314
1972	V8 454 7.4L 4 bbl (VIN W)	800-314	801-314
68-69	V8 396 6.5L 4 bbl	800-314	801-314
70-72	V8 454 7.4L 4 bbl	800-350	801-350
1971	V8 454 7.4L 4 bbl Exc. (SS w/o A/C)	800-350	801-350
66-67	V8 327 5.4L 4 bbl	800-350	801-350
68-71	V8 396 6.5L	800-350	801-350
Chevy II	1967 V8 327 5.4L	800-350	801-350
1968	V8 396 6.5L 4 bbl (Nova SS 396)	800-314	801-314
1968	V8 327 5.4L 4 bbl Hi-Perf.	800-350	801-350
Citation	82-83 4 Cyl. 151 2.5L (VIN R)	800-015	801-015
Citation II	84-85 4 Cyl. 151 2.5L (VIN R)	800-015	801-015
1985	V6 173 2.8L (VIN W)	800-850	801-850
Colorado	04-06 4 Cyl. 169 2.8L (VIN 8)	800-142	801-142
04-06	5 Cyl. 211 3.5L (VIN 6)	800-142	801-142
2007	4 Cyl. 174 2.9L (VIN 9)	800-142	801-142
2007	5 Cyl. 217 3.7L (VIN E)	800-142	801-142
Corvair	64-65 6 Cyl. All w/ single silencer	800-311	801-311
1966	6 Cyl. 164 2.7L & Turbo	800-311	801-311
1967	6 Cyl. 164 2.7L	800-311	801-311

Year	Engine	OE Replacement Filter	
		Oiled	Dry
68-69	6 Cyl. 164 2.7L w/ 2-1 bbls.	800-311	801-311
Corvette	1971 V8 454 7.4L 4 bbl (Exc. Hi-Perf)	800-314	801-314
1972	V8 350 5.7L 4 bbl (VIN K)	800-314	801-314
1972	V8 454 7.4L 4 bbl (VIN W)	800-314	801-314
1973	V8 350 5.7L 4 bbl (VIN J)	800-314	801-314
1973	V8 454 7.4L 4 bbl (VIN Z)	800-314	801-314
70-71	V8 350 5.7L 4 bbl	800-314	801-314
1965	V8 396 6.5L	800-350	801-350
1969	V8 350 5.7L 4 bbl	800-350	801-350
70-71	V8 454 7.4L 4 bbl	800-350	801-350
1972	V8 350 5.7L 4 bbl (VIN L) ZR 1	800-350	801-350
66-68	V8 327 5.4L	800-350	801-350
66-69	V8 427 7.0L 4 bbl	800-350	801-350
1996	V8 350 5.7L (VIN 5)	850-035	851-035
90-91	V8 350 5.7L (VIN 8)	850-035	851-035
90-95	V8 350 5.7L (VIN J) ZR1	850-035	851-035
92-96	V8 350 5.7L (VIN P)	850-035	851-035
02-04	V8 346 5.7L (VIN S)	850-118	851-118
85-89	V8 350 5.7L (VIN 8)	850-118	851-118
97-04	V8 346 5.7L (VIN G)	850-118	851-118
97-04	V8 346 5.7L (VIN G)	860-042	861-042
05-07	V8 364 6.0L (VIN U) 2 Required	850-063 (x2)	851-063 (x2)
El Camino	1979 V6 231 3.8L 2 bbl (VIN Z)	800-311	801-311
1980	V6 231 3.8L 2 bbl (VIN K)	800-311	801-311
1986	V6 231 3.8L 2 bbl (VIN A) Canada	800-311	801-311
78-79	V6 200 3.3L 2 bbl (VIN M)	800-311	801-311
78-84	V6 231 3.8L 2 bbl (VIN A)	800-311	801-311
79-82	V6 231 3.8L 2 bbl (VIN J) Canada	800-311	801-311
1968	V8 396 6.5L 4 bbl	800-314	801-314
1969	V8 396 6.5L 4 bbl (Exc. H.P.)	800-314	801-314
1971	V8 454 7.4L 4 bbl (Exc. Hi-Perf)	800-314	801-314
1972	V8 454 7.4L 4 bbl (VIN W)	800-314	801-314
1978	V8 305 5.0L 2 bbl (VIN U)	800-314	801-314
85-87	V6 262 4.3L F.I. (VIN Z)	800-314	801-314
69-70	V8 396 6.5L 4 bbl H.P.	800-350	801-350
70-71	V8 454 7.4L 4 bbl	800-350	801-350
81-84	V6 229 3.8L 2 bbl	800-365	801-365
Impala	1979 V8 305 5.0L 2 bbl (VIN G)	800-311	801-311
1980	V6 229 3.8L 2 bbl (VIN K)	800-311	801-311
1980	V8 267 4.4L 2 bbl (VIN J) Canada	800-311	801-311



**Part Number 850-118**

	Year	Engine	OE Replacement Filter	
			Oiled	Dry
	80-85	V6 231 3.8L 2 bbl (VIN A)	800-311	801-311
	1968	V8 396 6.5L 4 bbl	800-314	801-314
	1969	V8 396 6.5L 2 bbl	800-314	801-314
	1985	V6 262 4.3L F.I. (VIN Z)	800-314	801-314
	66-68	V8 327 5.4L 4 bbl	800-350	801-350
	1965	V8 396 6.5L 4 bbl H.P.	800-350	801-350
	66-69	V8 427 7.0L 4 bbl	800-350	801-350
	81-84	V6 229 3.8L 2 bbl	800-365	801-365
	00-05	V6 205 3.4L (VIN E)	850-214	851-214
	00-05	V6 231 3.8L (VIN K)	850-214	851-214
Impala SS	94-96	V8 350 5.7L (VIN P)	850-057	851-057
	03-05	V6 231 3.8L (VIN 1) SC	850-214	851-214
Intrigue	98-99	V6 231 3.8L (VIN K)	850-063	851-063
Kodiak	03-07	V8 6.6L DSL & 8.1L Gas	800-316	801-316
LLV USP Service	94-95	4 Cyl. 134 2.2L (VIN 4)	800-890	801-890
Lumina	1993	4 Cyl. 134 2.2L (VIN 4)	800-850	801-850
	90-92	4 Cyl. 151 2.5L (VIN R)	800-850	801-850
	1994	V6 189 3.1L (VIN T)	850-063	851-063
	00-01	V6 191 3.1L (VIN J)	850-063	851-063
	94-95	V6 207 3.4L (VIN X) Z34	850-063	851-063
	95-99	V6 191 3.1L (VIN M)	850-063	851-063
	96-97	V6 207 3.4L (VIN X)	850-063	851-063
	98-99	V6 231 3.8L (VIN K)	850-063	851-063
Lumina APV	90-95	V6 191 3.1L F.I. (VIN D)	800-365	801-365
Malibu	1979	V6 231 3.8L 2 bbl (VIN 2)	800-311	801-311
	1980	V6 229 3.8L 2 bbl (VIN K)	800-311	801-311
	78-79	V6 200 3.3L 2 bbl (VIN M)	800-311	801-311
	79-80	V8 267 4.4L 2 bbl (VIN J) Canada	800-311	801-311
	79-83	V6 231 3.8L 2 bbl (VIN A)	800-311	801-311
	1978	V6 231 3.8L 2 bbl (VIN A)	800-314	801-314
	1978	V8 305 5.0L 2 bbl (VIN U)	800-314	801-314
	66-67	V8 327 5.4L	800-350	801-350
	81-83	V6 229 3.8L 2 bbl	800-365	801-365
	81-82	V8 267 4.4L 2 bbl	800-365	801-365
Monte Carlo	1979	V6 231 3.8L 2 bbl (VIN 2)	800-311	801-311
	1980	V6 229 3.8L 2 bbl (VIN K)	800-311	801-311
	1987	V6 231 3.8L 2 bbl (VIN A) Canada	800-311	801-311
	78-79	V6 200 3.3L 2 bbl (VIN M)	800-311	801-311
	79-80	V8 267 4.4L 2 bbl (VIN J) Canada	800-311	801-311
	79-85	V6 231 3.8L 2 bbl (VIN A)	800-311	801-311



Part Number 800-365

	Year	Engine	OE Replacement Filter	
			Oiled	Dry
	1976	V8 305 5.0L 2 bbl (VIN Q)	800-314	801-314
	1978	V6 231 3.8L 2 bbl (VIN A)	800-314	801-314
	1978	V8 305 5.0L 2 bbl (VIN U)	800-314	801-314
	85-88	V6 262 4.3L F.I. (VIN Z)	800-314	801-314
	1971	V8 454 7.4L 4 bbl (SS454)	800-350	801-350
	83-84	V6 229 3.8L 2 bbl (VIN 9)	800-365	801-365
	81-84	V6 229 3.8L 2 bbl	800-365	801-365
	81-82	V8 267 4.4L 2 bbl	800-365	801-365
	80-81	V6 231 3.8L 4 bbl Turbo (VIN 3)	800-870	801-870
	95-97	V6 207 3.4L (VIN X) Z34	850-063	851-063
	95-99	V6 191 3.1L (VIN M)	850-063	851-063
	98-99	V6 231 3.8L (VIN K)	850-063	851-063
	00-05	V6 205 3.4L (VIN E)	850-214	851-214
	00-05	V6 231 3.8L (VIN K)	850-214	851-214
	04-05	V6 231 3.8L (VIN 1) SC	850-214	851-214
Nova	1974	V8 350 5.7L 4 bbl (VIN L)	800-314	801-314
	1975	V6 262 4.3L (VIN G)	800-314	801-314
	1976	V8 305 5.0L 2 bbl (VIN Q)	800-314	801-314
	68-71	V8 350 5.7L 2 bbl	800-314	801-314
	70-71	V8 350 5.7L 4 bbl	800-314	801-314
	72-73	V8 307 5.0L 2bbl	800-314	801-314
	72-74	V8 350 5.7L 4 bbl (VIN K)	800-314	801-314
	72-75	V8 350 5.7L 2 bbl (VIN H)	800-314	801-314
	77-78	V8 305 5.0L 2 bbl (VIN U)	800-314	801-314
	1967	V8 327 5.4L	800-350	801-350
	69-70	V8 396 6.5L 4 bbl	800-350	801-350
RV Series P/U	87-88	V8 350 5.7L 4 bbl (VIN M)	800-373	801-373
	87-88	V8 454 7.4L 4 bbl (VIN W)	800-373	801-373
	89-91	V8 454 7.4L (VIN H)	800-373	801-373
S-10 Blazer	85-88	4 Cyl. 151 2.5L (VIN E)	800-015	801-015
	86-89	V6 173 2.8L (VIN R)	800-365	801-365
	88-94	V6 262 4.3L (VIN Z)	800-365	801-365
	86-89	V6 173 2.8L F.I.	800-365	801-365
	88-94	V6 262 4.3L F.I.	800-365	801-365
	95-05	V6 262 4.3L (VIN W&X)	850-342	851-342
	92-94	V6 262 4.3L (VIN W)	850-342	851-342
	86-93	V6 173 2.8L F.I.	800-365	801-365
	88-95	V6 262 4.3L F.I.	800-365	801-365
	85-91	4 Cyl. 151 2.5L (VIN E)	800-015	801-015
	91-93	4 Cyl. 151 2.5L (VIN A)	800-015	801-015
	86-93	V6 173 2.8L (VIN R)	800-365	801-365
	88-95	V6 262 4.3L (VIN Z)	800-365	801-365
	00-03	4 Cyl. 134 2.2L (VIN 5) Alt. Fuel	850-342	851-342
	93-03	V6 262 4.3L (VIN W)	850-342	851-342
	94-03	4 Cyl. 134 2.2L (VIN 4)	850-342	851-342
	2003	4 Cyl. 134 2.2L (VIN H)	850-342	851-342
	96-05	V6 262 4.3L (VIN X)	850-342	851-342
S-10 Extreme	2003	V6 262 4.3L (VIN X)	850-342	851-342
	99-02	V6 262 4.3L (VIN W)	850-342	851-342
Silverado 1500	02-11	V6 262 4.3L (VIN X) Flex Fuel	850-135	851-135

	Year	Engine	OE Replacement Filter	
			Oiled	Dry
	99-03	V6 262 4.3L (VIN W)	850-135	851-135
	99-11	V8 292 4.8L (VIN V)	850-135	851-135
	99-15	V8 325 5.3L (VIN T)	850-135	851-135
Silverado 1500 HD	01-15	V8 365 6.0L (VIN U)	850-135	851-135
Silverado 2500	1999	V8 395 6.5L DSL (VIN F)	850-135	851-135
	99-11	V8 365 6.0L (VIN U)	850-135	851-135
Silverado 2500 HD	01-11	V8 365 6.0L (VIN U)	850-135	851-135
	01-05	V8 403 6.6L (VIN 1) Dmx	850-135	851-135
	06-10	6.6L Duramax	860-161	861-161
	01-14	V8 496 8.1L (VIN G) Vortec	850-135	851-135
Silverado 3500	01-14	V8 365 6.0L (VIN U)	850-135	851-135
	01-05	V8 403 6.6L (VIN 1) Dmx	850-135	851-135
	06-10	6.6L Duramax	860-161	861-161
	01-14	V8 496 8.1L (VIN G) Vortec	850-135	851-135
Silverado Chassis	01-14	V8 365 6.0L (VIN U)	850-135	851-135
	01-05	V8 403 6.6L (VIN 1) Duramax	850-135	851-135
	06-10	6.6L Duramax	860-161	861-161
	01-06	V8 496 8.1L (VIN G) Vortec	850-135	851-135
Silverado SS	03-06	V8 365 6.0L (VIN N)	850-135	851-135
SSR	03-04	V8 325 5.3L (VIN T&P)	850-118	851-118
	05-06	V8 365 6.0L (VIN H)	850-118	851-118
Suburban	1972	V8 307 5.0L 2bbl (VIN F)	800-311	801-311
	1979	V8 305 5.0L 2 bbl (VIN U)	800-311	801-311
	1980	V8 305 5.0L 2 bbl (VIN G)	800-311	801-311
	1970	V8 350 5.7L 4 bbl	800-314	801-314
	1970	V8 402 6.6L 4 bbl	800-314	801-314
	1971	V8 307 5.0L 2bbl	800-314	801-314
	1972	V8 350 5.7L 2bbl (VIN E)	800-314	801-314
	1975	V8 350 5.7L 2bbl (VIN V)	800-314	801-314
	70-71	V8 350 5.7L 2 bbl	800-314	801-314
	77-78	V8 305 5.0L 2 bbl (VIN U)	800-314	801-314
	1970	V8 454 7.4L 4 bbl	800-350	801-350
	1980	V8 400 6.6L (VIN X)	800-373	801-373
	1980	V8 454 7.4L 4 bbl (VIN S)	800-373	801-373
	80-86	V8 350 5.7L 4 bbl (VIN L)	800-373	801-373
	80-86	V8 350 5.7L 4 bbl (VIN M)	800-373	801-373
	80-86	V8 454 7.4L 4 bbl (VIN W)	800-373	801-373
	82-86	V8 305 5.0L 4 bbl (VIN H)	800-373	801-373
	89-91	V8 454 7.4L (VIN N)	800-373	801-373
	96-99	V8 454 7.4L (VIN J)	800-396	801-396
	96-99	V8 350 5.7L (VIN R)	800-396	801-396
	97-99	V8 395 6.5L DSL (VIN F)	850-135	851-135
	00-14	V8 325 5.3L (VIN T)	850-135	851-135
	00-14	V8 365 6.0L (VIN U)	850-135	851-135
	00-15	V8 325 5.3L (VIN Z) Flex Fuel	850-135	851-135
	01-08	V8 496 8.1L (VIN G) Vortec	850-135	851-135
Tahoe	96-00	V8 350 5.7L (VIN R)	800-396	801-396
	97-99	V8 395 6.5L DSL (VIN S)	800-396	801-396
	00-14	V8 292 4.8L (VIN V)	850-135	851-135
	00-15	V8 325 5.3L (VIN T)	850-135	851-135



Part Number 800-373

	Year	Engine	OE Replacement Filter	
			Oiled	Dry
	00-15	V8 325 5.3L (VIN Z) Flex Fuel	850-135	851-135
Trailblazer	02-09	6 Cyl. 254 4.2L (VIN S) Vortec	800-109	801-109
Trailblazer EXT	03-06	V8 325 5.3L (VIN P)	800-109	801-109
Van 1500	97-98	V6 262 4.3L (VIN W)	850-118	851-118
	97-98	V8 305 5.0L (VIN M)	850-018	851-018
	97-98	V8 350 5.7L (VIN R)	850-018	851-018
Van 1500 Exprs	96-00	V8 305 5.0L (VIN M)	850-018	851-018
	96-00	V8 350 5.7L (VIN R)	850-018	851-018
	96-01	V6 262 4.3L (VIN W)	850-018	851-018
Van 2500	97-98	V6 262 4.3L (VIN W)	850-118	851-118
	97-98	V8 305 5.0L (VIN M)	850-018	851-018
	97-98	V8 350 5.7L (VIN R)	850-018	851-018
Van 2500 Exprs	00-02	V8 395 6.5L DSL (VIN F)	850-018	851-018
	96-00	V8 350 5.7L (VIN R)	850-018	851-018
	99-00	V6 262 4.3L (VIN W)	850-118	851-118
	99-00	V8 305 5.0L (VIN M)	850-018	851-018
Van 3500	97-98	V8 350 5.7L (VIN R)	850-018	851-018
	97-98	V8 454 7.4L (VIN J)	850-018	851-018
Van 3500 Exprs	99-02	V8 395 6.5L DSL (VIN F)	850-018	851-018
	96-02	V8 454 7.4L (VIN J)	850-018	851-018
	96-00	V8 350 5.7L (VIN R)	850-018	851-018
Van G Series	1996	V6 262 4.3L (VIN W)	850-118	851-118
	1996	V8 305 5.0L (VIN M)	850-018	851-018
	1996	V8 350 5.7L (VIN R)	850-018	851-018
Van P Series	96-00	V6 262 4.3L (VIN W)	850-118	851-118
	96-00	V8 350 5.7L (VIN R)	850-018	851-018
	96-00	V8 454 7.4L (VIN J)	850-018	851-018
	96-00	V8 395 6.5L DSL (VIN F)	850-018	851-018
Van G Series	1980	V8 350 5.7L 4 bbl (VIN L)	800-373	801-373
	1980	V8 350 5.7L 4 bbl (VIN M)	800-373	801-373
	1991	V8 454 7.4L (VIN N)	800-373	801-373
Van P Series	1990	V8 454 7.4L (VIN N)	800-373	801-373
	81-89	V8 454 7.4L 4 bbl (VIN W)	800-373	801-373
	83-88	V8 350 5.7L 4 bbl (VIN M)	800-373	801-373
Aspen	07-08	4.7L & 5.7L	850-343	851-343
300, 300C	05-09	V6 2.7L 24V (VIN R)	850-233	851-233
	05-07	V6 3.5L 24V (VIN G)	850-233	851-233
	05-07	V8 5.7L Hemi (VIN H)	850-233	851-233



Part Number 800-310

	Year	Engine	OE Replacement Filter		
			Oiled	Dry	
Fifth Avenue	1983	6 Cyl. 225 3.7L 1 bbl (VIN H)	800-310	801-310	
	83-89	V8 318 5.2L 2 bbl (VIN P)	800-310	801-310	
Imperial	1983	V8 318 5.2L 2 bbl (VIN P)	800-310	801-310	
LeBaron	1981	6 Cyl. 225 3.7L 1 bbl (VIN E)	800-310	801-310	
	1981	V8 318 5.2L 2 bbl (VIN K)	800-310	801-310	
	1981	V8 318 5.2L 2 bbl (VIN L)	800-310	801-310	
77-80	V8 318 5.2L 2 bbl (VIN G)	800-310	801-310		
	78-80	6 Cyl. 225 3.7L 2 bbl (VIN D)	800-310	801-310	
79-80	6 Cyl. 225 3.7L 1 bbl (VIN C) w/ 10" O.D.	800-310	801-310		
New Yorker	1982	6 Cyl. 225 3.7L 1 bbl (VIN E)	800-310	801-310	
PT Cruiser	03-05	4 Cyl. 148 2.4L Turbo (VIN G,E&S)	850-153	851-153	
	01-05	4 Cyl. 148 2.4L (VIN B&X)	850-153	851-153	
Challenger	08-09	3.5, 5.7, 6.1L V-8	850-233	851-233	
	Charger	06-09	V6 167 2.7L 24V	850-233	851-233
06-09		V6 215 3.5L 24V	850-233	851-233	
06-09	V8 345 5.7L (Hemi)	850-233	851-233		
	Colt	1990	4 Cyl. 90 1.5L 2 bbl (VIN K)	800-090	801-090
Dakota		87-88	4 Cyl. 135 2.2L 2 bbl	800-090	801-090
		1987	V6 239 3.9L 2 bbl (VIN M)	800-310	801-310
		1991	V8 318 5.2L (VIN Y) w/ Ext. Cab	800-310	801-310
1996	V8 318 5.2L (VIN T) Nat. Gas	800-310	801-310		
90-91	V8 239 3.9L (VIN X) w/ Ext. Cab	800-310	801-310		
90-96	V8 239 3.9L (VIN X)	800-310	801-310		
91-96	V8 318 5.2L (VIN Y)	800-310	801-310		
00-02	4 Cyl. 150 2.5L (VIN P)	850-175	851-175		
00-08	V8 287 4.7L (VIN N)	850-175	851-175		
97-03	V8 239 3.9L (VIN X)	850-175	851-175		
97-99	4 Cyl. 150 2.5L (VIN P)	850-175	851-175		
97-99	V8 318 5.2L (VIN Y)	850-175	851-175		
98-03	V8 360 5.9L (VIN Z)	850-175	851-175		
04-08	V6 225 3.7L (VIN K)	850-175	851-175		
Dakota Shelby	1989	V8 318 5.2L (VIN Y)	800-310	801-310	
Durango	04-09	V6 226 3.7L (VIN K)	850-343	851-343	
	00-03	V8 287 4.7L (VIN N)	850-175	851-175	
04-09	V8 287 4.7L (VIN N)	850-343	851-343		
98-01	V8 318 5.2L (VIN Y)	850-175	851-175		
04-09	V8 345 5.7L (Hemi) (VIN D)	850-343	851-343		
98-03	V8 360 5.9L (VIN Z)	850-175	851-175		

	Year	Engine	OE Replacement Filter	
			Oiled	Dry
Magnum	98-99	V8 239 3.9L (VIN X)	850-175	851-175
	06-08	V6 167 2.7L 24V	850-233	851-233
	06-08	V6 215 3.5L 24V (VIN V)	850-233	851-233
	06-08	V8 345 5.7L (Hemi) (VIN 2)	850-233	851-233
Monaco	91-92	V6 181 3.0L (VIN U) (Z7X-711 Eng.)	850-046	851-046
Neon	00-05	4 Cyl. 2.0L (VIN C) All	800-106	801-106
	01-05	4 Cyl. 2.0L (VIN F) All	800-106	801-106
	04-05	4 Cyl. 2.0L (VIN S) Turbo	800-106	801-106
Pickup D/W Series	1979	6 Cyl. 225 3.7L 2 bbl (VIN B)	800-080	801-080
	79-80	6 Cyl. 225 3.7L 1 bbl (VIN N)	800-080	801-080
82-84	6 Cyl. 3.7L Canada	800-080	801-080	
	1977	6 Cyl. 225 3.7L 2 bbl (VIN C)	800-310	801-310
1978	6 Cyl. 225 3.7L 2 bbl (VIN B)	800-310	801-310	
1979	V8 360 5.9L 2 bbl (VIN F)	800-310	801-310	
1980	V8 318 5.2L 4 bbl (VIN P)	800-310	801-310	
1980	V8 360 5.9L 4 bbl (VIN S)	800-310	801-310	
1982	6 Cyl. 225 3.7L 2 bbl (VIN W)	800-310	801-310	
1982	V8 360 5.9L 4 bbl (VIN U)	800-310	801-310	
1982	V8 360 5.9L 4 bbl (VIN V)	800-310	801-310	
1983	6 Cyl. 225 3.7L 2 bbl (VIN M)	800-310	801-310	
1983	V8 318 5.2L 4 bbl (VIN U)	800-310	801-310	
1989	V8 318 5.2L (VIN Y) w/ Metal Hsg.	800-310	801-310	
66-71	V8 318 5.2L 2 bbl	800-310	801-310	
72-80	V8 318 5.2L 2 bbl (VIN E)	800-310	801-310	
81-82	6 Cyl. 225 3.7L 1 bbl (VIN E)	800-310	801-310	
81-82	V8 318 5.2L 2 bbl (VIN P)	800-310	801-310	
81-82	V8 318 5.2L 2 bbl (VIN R)	800-310	801-310	
81-82	V8 360 5.9L 4 bbl (VIN T)	800-310	801-310	
83-87	6 Cyl. 225 3.7L 1 bbl (VIN H)	800-310	801-310	
83-87	V8 360 5.9L 4 bbl (VIN T)	800-310	801-310	
83-88	V8 360 5.9L 4 bbl (VIN 1)	800-310	801-310	
83-88	V8 360 5.9L 4 bbl (VIN W)	800-310	801-310	
87-88	V8 360 5.9L (VIN 5)	800-310	801-310	
89-93	V8 360 5.9L (VIN Z)	800-310	801-310	
90-93	V8 318 5.2L (VIN Y)	800-310	801-310	
1991	6 Cyl. 360 5.9L Turbo Diesel (VIN C)	800-376	801-376	
89-92	6 Cyl. 360 5.9L Turbo Diesel (VIN 8)	800-376	801-376	
Ram 1500	94-01	V8 239 3.9L (VIN X)	850-384	851-384
	94-01	V8 360 5.9L (VIN Y)	850-384	851-384
94-01	V8 360 5.9L (VIN Z)	850-384	851-384	
95-96	V8 318 5.2L (VIN T) Nat. Gas	850-384	851-384	
03-12	V6 225 3.7L (VIN K)	850-447	851-447	
03-12	V8 287 4.7L (VIN N)	850-447	851-447	
02-03	V8 360 5.9L (VIN Z)	850-447	851-447	
03-12	V8 345 5.7L (VIN D) Hemi	850-447	851-447	
04-06	SRT 10 8.3L V10	850-357	851-357	
Ram 1500 Van	98-03	V8 239 3.9L (VIN X)	800-310	801-310
	98-03	V8 360 5.9L (VIN Y)	800-310	801-310
	98-03	V8 360 5.9L (VIN Z)	800-310	801-310
Ram 1500 Wgn	98-03	V8 239 3.9L (VIN X)	800-310	801-310

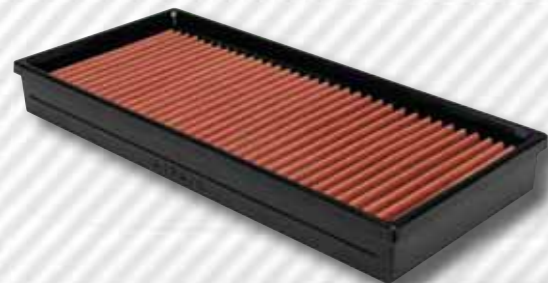
	Year	Engine	OE Replacement Filter	
			Oiled	Dry
Ram 2500	98-03	V8 318 5.2L (VIN Y)	800-310	801-310
	01-02	6 Cyl. 359 5.9L H.O. DSL (VIN 7)	850-356	851-356
01-02	6 Cyl. 359 5.9L H.O. DSL (VIN 6)	850-356	851-356	
98-02	6 Cyl. 359 5.9L DSL (VIN 6) 24V	850-356	851-356	
94-96	6 Cyl. 359 5.9L DSL (VIN C)	850-356	851-356	
97-98	6 Cyl. 359 5.9L DSL (VIN D)	850-356	851-356	
03-07	6 Cyl. 359 5.9L H.O. DSL (VIN C)	850-357	851-357	
07-12	6 Cyl. 408 6.7L DSL	860-424	861-424	
03-05	6 Cyl. 359 5.9L DSL (VIN 6)	850-357	851-357	
94-02	V8 360 5.9L (VIN Z)	850-384	851-384	
94-96	V8 318 5.2L (VIN Y)	850-384	851-384	
95-96	V8 318 5.2L (VIN T) Nat. Gas	850-384	851-384	
03-12	V8 345 5.7L (VIN D) Hemi	850-447	851-447	
03-10	V10 488 8.0L (VIN W)	850-447	851-447	
Ram 2500 Van	2002	V8 239 3.9L (VIN X)	800-310	801-310
	98-03	V8 318 5.2L (VIN Y)	800-310	801-310
98-03	V8 360 5.9L (VIN Z)	800-310	801-310	
98-03	V8 318 5.2L (VIN T) Nat. Gas	800-310	801-310	
Ram 2500 Wgn	98-03	V8 318 5.2L (VIN Y)	800-310	801-310
98-03	V8 360 5.9L (VIN Z)	800-310	801-310	
99-03	V8 318 5.2L (VIN T) Nat. Gas	800-310	801-310	
Ram 3500	98-00	6 Cyl. 359 5.9L DSL (VIN 6) 24V	850-356	851-356
	01-02	6 Cyl. 359 5.9L H.O. DSL (VIN 7)	850-356	851-356
01-02	6 Cyl. 359 5.9L DSL (VIN 6)	850-356	851-356	
98-02	6 Cyl. 359 5.9L DSL (VIN 6) 24V	850-356	851-356	
94-96	6 Cyl. 359 5.9L DSL (VIN C)	850-356	851-356	
97-98	6 Cyl. 359 5.9L DSL (VIN D)	850-356	851-356	
03-07	6 Cyl. 359 5.9L H.O. DSL (VIN C)	850-357	851-357	
03-07	6 Cyl. 359 5.9L DSL (VIN 6)	850-357	851-357	
07-12	6 Cyl. 408 6.7L DSL	860-424	861-424	
94-02	V8 360 5.9L (VIN 5)	850-384	851-384	
95-02	V8 360 5.9L (VIN Z)	850-384	851-384	
03-12	V8 345 5.7L (VIN D) Hemi	850-447	851-447	
03-10	V10 488 8.0L (VIN W)	850-447	851-447	
Ram 3500 Van	98-03	V8 318 5.2L (VIN Y)	800-310	801-310
98-03	V8 360 5.9L (VIN Z)	800-310	801-310	
98-03	V8 318 5.2L (VIN T) Nat. Gas	800-310	801-310	
Ram 3500 Wgn	98-03	V8 318 5.2L (VIN Y)	800-310	801-310
98-03	V8 360 5.9L (VIN Z)	800-310	801-310	
99-03	V8 318 5.2L (VIN T) Nat. Gas	800-310	801-310	
Ram Van	1982	V8 318 5.2L 4 bbl (VIN R)	800-310	801-310
	1982	V8 360 5.9L 2 bbl (VIN S)	800-310	801-310
1982	V8 360 5.9L 4 bbl (VIN T)	800-310	801-310	
1982	V8 360 5.9L 4 bbl (VIN U)	800-310	801-310	
1982	V8 360 5.9L 4 bbl (VIN V)	800-310	801-310	
1983	V8 318 5.2L 4 bbl (VIN U)	800-310	801-310	
83-87	V8 360 5.9L 2 bbl (VIN T)	800-310	801-310	
83-87	V8 360 5.9L 4 bbl (VIN 1)	800-310	801-310	
83-88	V8 360 5.9L 4 bbl (VIN W)	800-310	801-310	
89-97	V8 318 5.2L (VIN Y)	800-310	801-310	

	Year	Engine	OE Replacement Filter	
			Oiled	Dry
89-97	V8 360 5.9L (VIN Z)	800-310	801-310	
	90-97	V8 239 3.9L (VIN X)	800-310	801-310
94-97	V8 318 5.2L (VIN T) Nat. Gas	800-310	801-310	
1982	V8 318 5.2L 2 bbl (VIN P)	800-310	801-310	
Ram Van	1982	6 Cyl. 225 3.7L 1 bbl (VIN E)	800-080	801-080
& Wagon	83-87	6 Cyl. 225 3.7L 1 bbl (VIN H)	800-080	801-080
Ram Wagon	1982	V8 318 5.2L 2 bbl (VIN P)	800-310	801-310
1982	V8 318 5.2L 4 bbl (VIN R)	800-310	801-310	
1983	V8 360 5.9L 4 bbl (VIN U)	800-310	801-310	
83-87	V8 360 5.9L 2 bbl (VIN T)	800-310	801-310	
90-97	V8 239 3.9L (VIN X)	800-310	801-310	
Ramcharger	79-80	6 Cyl. 225 3.7L 1 bbl (VIN N)	800-080	801-080
SX	2003	4 Cyl. 2.0L (VIN C) Canada All	800-106	801-106
Vans B & Sportsman	1979	6 Cyl. 225 3.7L 2 bbl (VIN B)	800-080	801-080
	1981	6 Cyl. 225 3.7L 1 bbl (VIN E)	800-080	801-080
79-80	6 Cyl. 225 3.7L 1 bbl (VIN N)	800-080	801-080	
Eagle	1988	6 Cyl. 258 4.2L 2 bbl (VIN C)	800-080	801-080
Premier	1988	4 Cyl. 150 2.5L (VIN Z)	850-046	851-046
	1988	V6 182 3.0L (VIN J)	850-046	851-046
1989	4 Cyl. 153 2.5L (VIN H)	850-046	851-046	
89-90	V6 181 2.0L (VIN U)	850-046	851-046	
91-92	V6 181 3.0L (VIN U) (Z7X-711 Eng.)	850-046	851-046	
Brava	80-81	4 Cyl. 2.0L	850-046	851-046
Spider 2000	80-83	4 Cyl. 2.0L	850-046	851-046
Vista	89-90	4 Cyl. 90 1.5L 2 bbl (VIN X)	800-090	801-090
Aerostar	86-97	V6 182 3.0L (VIN U)	850-024	851-024
	90-97	V6 245 4.0L (VIN X)	850-024	851-024
Bronco	1965	6 Cyl. 170 2.7L 1bbl	800-080	801-080
	66-67	6 Cyl. 170 2.8L 1bbl	800-080	801-080
	87-93	6 Cyl. 300 4.9L (VIN Y)	850-323	851-323
85-86	V8 302 5.0L (VIN N)	850-330	851-330	
87-96	V8 302 5.0L (VIN N)	850-323	851-323	
88-96	V8 351 5.8L (VIN H)	850-323	851-323	
Bronco II	88-90	V6 177 2.9L (VIN T)	850-024	851-024
Club Wagon	95-96	6 Cyl. 300 4.9L (VIN Y)	850-323	851-323
	95-96	6 Cyl. 300 4.9L (VIN Z) LPG	850-323	851-323



Part Number 800-080

Year	Engine	OE Replacement Filter	
		Oiled	Dry
95-96	V8 302 5.0L (VIN N)	850-323	851-323
95-96	V8 351 5.8L (VIN H)	850-323	851-323
95-96	V8 460 7.5L (VIN G)	850-323	851-323
1998	V8 330 5.4L (VIN Z) Bi-Fuel	860-345	861-345
97-98	V10 415 6.8L (VIN S)	860-345	861-345
97-98	V6 256 4.2L (VIN 2)	860-345	861-345
97-98	V8 281 4.6L (VIN 6)	860-345	861-345
97-98	V8 350 5.4L (VIN L)	860-345	861-345
97-98	V8 330 5.4L (VIN M) Nat. Gas	860-345	861-345
Contour	98-00	V6 155 2.5L (VIN G) SVT	860-340 861-340
Crown Victoria	92-08	V8 281 4.6L (VIN W, 6&9)	850-330 851-330
E-150 Van	95-96	6 Cyl. 300 4.9L (VIN Y)	850-323 851-323
	95-96	V8 302 5.0L (VIN N)	850-323 851-323
	95-96	V8 351 5.8L (VIN H)	850-323 851-323
E-250 Van	1996	6 Cyl. 300 4.9L (VIN Y)	850-323 851-323
	95-96	V8 351 5.8L (VIN H)	850-323 851-323
E-250HD Van	1996	6 Cyl. 300 4.9L (VIN Y)	850-323 851-323
	1996	6 Cyl. 300 4.9L (VIN Z) LPG	850-323 851-323
	1996	V8 351 5.8L (VIN H)	850-323 851-323
E-350 Van	95-96	6 Cyl. 300 4.9L (VIN Y)	850-323 851-323
	1996	6 Cyl. 300 4.9L (VIN Z) LPG	850-323 851-323
	95-96	V8 351 5.8L (VIN H)	850-323 851-323
	95-96	V8 460 7.5L (VIN G)	850-323 851-323
Econoline E-150	97-03	V6 256 4.2L (VIN 2)	860-345 861-345
Van/Wagon	97-07	V8 330 5.4L (VIN L)	860-345 861-345
	97-98	V8 281 4.6L (VIN 6)	860-345 861-345
	99-03	V8 281 4.6L (VIN W)	860-345 861-345
Econoline E-250	1997	V8 281 4.6L (VIN 6)	860-345 861-345
Van/Wagon	97-03	V6 256 4.2L (VIN 2)	860-345 861-345
	97-07	V8 330 5.4L (VIN L)	860-345 861-345
	97-07	V8 330 5.4L (VIN M) Nat. Gas	860-345 861-345
	98-03	V8 330 5.4L (VIN Z) Bi-Fuel	860-345 861-345
Econoline E-250HD	1997	V6 256 4.2L (VIN 2)	860-345 861-345
	1997	V8 330 5.4L (VIN L)	860-345 861-345
Econln E-350	1998	V8 330 5.4L (VIN Z) Bi-Fuel	860-345 861-345
	97-98	V10 415 6.8L (VIN S)	860-345 861-345
	97-98	V8 350 5.4L (VIN L)	860-345 861-345
	97-98	V8 330 5.4L (VIN M) Nat. Gas	860-345 861-345
	97-08	V8 330 5.4L (VIN L)	860-345 861-345
Supr Duty Van	99-08	V10 415 6.8L (VIN S)	860-345 861-345



Part Number 800-323

Year	Engine	OE Replacement Filter	
		Oiled	Dry
Econoln E-450	97-08	V8 330 5.4L (VIN L)	860-345 861-345
Supr Duty Van	99-08	V10 415 6.8L (VIN S)	860-345 861-345
Econoln E-550	97-08	V8 330 5.4L (VIN L)	860-345 861-345
Supr Duty Wgn	99-08	V10 415 6.8L (VIN S)	860-345 861-345
Econoline Dsl	88-91	V8 445 7.3L (VIN M) Mfg. Up to 06/91	800-317 801-317
E-Series	1994	V8 351 5.8L (VIN H)	850-323 851-323
	87-94	6 Cyl. 300 4.9L (VIN Y)	850-323 851-323
	87-94	V8 302 5.0L (VIN N)	850-323 851-323
	88-94	V8 351 5.8L (VIN H)	850-323 851-323
	88-94	V8 460 7.5L (VIN G)	850-323 851-323
	89-95	6 Cyl. 300 4.9L (VIN Y) Canada	850-323 851-323
Econoline P/U	61-62	6 Cyl. All	800-080 801-080
Econoline Van	61-67	6 Cyl. All	800-080 801-080
Econoline Wgn	61-62	6 Cyl. All	800-080 801-080
Escape	01-04	4 Cyl. 121 2.0L (VIN B)	850-187 851-187
	05-08	4 Cyl. 122 2.0L (VIN Z)	850-187 851-187
	01-08	V6 182 3.0L (VIN 1)	850-187 851-187
Excursion	00-03	V8 344 7.3L D.I. DSL (VIN F)	850-338 851-338
	03-06	V8 363 6.0L DSL (VIN P)	860-341 861-341
	00-06	V10 415 6.8L (VIN S)	860-345 861-345
	00-06	V8 330 5.4L (VIN S)	860-345 861-345
Expedition	97-00	V8 281 4.6L (VIN 6)	860-345 861-345
	97-04	V8 281 4.6L (VIN W)	860-345 861-345
	97-04	V8 330 5.4L (VIN L)	860-345 861-345
	05-06	V8 330 5.4L (VIN 5)	850-349 851-349
	09-14	V8 330 5.4L (VIN 5)	860-397 861-397
Explorer	91-94	V6 245 4.0L (VIN X)	850-024 851-024
	1997	V6 245 4.0L (VIN E) w/Panel Air	850-106 851-106
	1997	V6 245 4.0L (VIN P) w/Panel Air	850-106 851-106
	2001	V6 245 4.0L (VIN E)	850-106 851-106
	97-98	V6 245 4.0L (VIN X) w/Panel Air	850-106 851-106
	98-00	V6 245 4.0L (VIN E) (SOHC)	850-106 851-106
	98-01	V8 302 5.0L (VIN P)	850-106 851-106
	1996	V8 302 5.0L (VIN P)	860-196 861-196
	1997	V8 302 5.0L (VIN P) w/ Connical Air	860-196 861-196
	1998	V6 245 4.0L (VIN X) w/ Connical Air	860-196 861-196
	1997	V6 245 4.0L (VIN E) w/ Connical Air	860-395 861-395
	1997	V6 245 4.0L (VIN X) w/ Connical Air	860-395 861-395
	95-96	V6 245 4.0L (VIN E)	860-395 861-395
	99-01	V6 245 4.0L (VIN E)	850-106 851-106
Focus ST	2013	4 Cyl. 2.0L Turbo	860-408 861-408
F-100	61-64	6 Cyl. 233 3.7L	800-080 801-080
	1967	6 Cyl. 300 4.9L	800-080 801-080
F-100 Pltfrm Stake	61-64	6 Cyl. 233 3.7L	800-080 801-080
F-150	87-96	6 Cyl. 300 4.9L (VIN Y)	850-323 851-323
	94-96	6 Cyl. 300 4.9L (VIN Z) Flex Fuel	850-323 851-323
	85-86	V8 302 5.0L (VIN N)	850-330 851-330
	87-96	V8 302 5.0L (VIN N)	850-323 851-323
	88-96	V8 351 5.8L (VIN H)	850-323 851-323
	1997	V8 281 4.6L (VIN 9) (LPG)	860-345 861-345

Year	Engine	OE Replacement Filter	
		Oiled	Dry
00-04	V8 330 5.4L (VIN M) Nat. Gas	860-345	861-345
97-04	V8 330 5.4L (VIN L)	860-345	861-345
05-08	V8 330 5.4L (VIN 5) 24V SOHC	850-349	851-349
09-14	V8 330 5.4L (VIN 5) 24V SOHC	860-397	861-397
97-08	V6 256 4.2L (VIN 2)	860-345	861-345
97-08	V8 281 4.6L (VIN W)	860-345	861-345
97-98	V8 281 4.6L (VIN 6)	860-345	861-345
98-04	V8 330 5.4L (VIN Z) Bi-Fuel	860-345	861-345
04-08	V8 5.4L (VIN 5)	850-349	851-349
99-04	V8 330 5.4L SC (VIN 3) SVT Ltgn	850-140	851-140
F-150 Heritage	2004	V8 330 5.4L SC (VIN 3) SVT Ltgn	850-140 851-140
	2004	V6 256 4.2L (VIN 2)	860-345 861-345
	2004	V8 281 4.6L (VIN W)	860-345 861-345
	2004	V8 281 4.6L (VIN L)	860-345 861-345
	2004	V8 330 5.4L (VIN M) Nat. Gas	860-345 861-345
	2004	V8 330 5.4L (VIN Z) Bi-Fuel	860-345 861-345
	2004	V8 281 4.6L (VIN 6)	860-345 861-345
Super Crew	2004	V8 281 4.6L (VIN L)	860-345 861-345
F-150	02-04	V8 330 5.4L SC (VIN R)	850-140 851-140
Super Crew	01-04	V8 330 5.4L (VIN L)	860-345 861-345
	02-06	V8 281 4.6L (VIN W&6)	860-345 861-345
F-250	61-64	6 Cyl. 233 3.7L	800-080 801-080
	1967	6 Cyl. 300 4.9L	800-080 801-080
	88-94	V8 445 7.3L DSL (VIN M)	800-317 801-317
	94-96	V8 445 7.3L DSL (VIN F)	800-346 801-346
	87-96	6 Cyl. 300 4.9L (VIN Y)	850-323 851-323
	95-96	6 Cyl. 300 4.9L (VIN Z) Flex Fuel	850-323 851-323
	85-86	V8 302 5.0L (VIN N)	850-330 851-330
	87-96	V8 302 5.0L (VIN N)	850-323 851-323
	87-96	V8 351 5.8L (VIN H)	850-323 851-323
	88-96	V8 460 7.5L (VIN G)	850-323 851-323
	1997	V8 281 4.6L (VIN 9) (LPG)	860-345 861-345
	1998	V8 330 5.4L (VIN M) Nat. Gas	860-345 861-345
	97-99	V8 281 4.6L (VIN 6)	860-345 861-345
	97-99	V8 281 4.6L (VIN W)	860-345 861-345
	97-99	V8 330 5.4L (VIN L)	860-345 861-345
	98-99	V8 330 5.4L (VIN Z) Bi-Fuel	860-345 861-345
F-250 HD	1997	V8 445 7.3L DSL (VIN F)	800-346 801-346
	1997	V8 351 5.8L (VIN H)	850-323 851-323
	1997	V8 460 7.5L (VIN G)	850-323 851-323
F-250 Pltfrm Stake	61-64	6 Cyl. 233 3.7L	800-080 801-080
F-250	97-98	V8 445 7.3L DSL (VIN F)	800-346 801-346
Super Duty	1999	V8 444 7.3L (VIN F) Mfg. Up to 12/6/98	850-312 851-312
	1999	V8 444 7.3L (VIN F) Mfg. After to 12/6/98	850-338 851-338
	99-03	V8 444 7.3L D.I. DSL (VIN F)	850-338 851-338
Spr Dty F-250/350/450/550	08-10	V8 6.4L DSL	860-348 861-348
	03-07	V8 363 6.0L DSL (VIN P)	860-341 861-341
	11-15	V8 6.2L	860-397 861-397
	1998	V6 256 4.2L (VIN 2)	860-345 861-345
	98-04	V8 330 5.4L (VIN L)	860-345 861-345



Part Number 800-345

Year	Engine	OE Replacement Filter	
		Oiled	Dry
05-08	V8 330 5.4L (VIN 5) 24V SOHC	850-349	851-349
99-04	V10 415 6.8L (VIN S)	860-345	861-345
05-07	V10 6.8L	850-324	851-324
F-250 HD P/U	1997	V8 351 5.8L (VIN H)	850-323 851-323
	1997	V8 460 7.5L (VIN G)	850-323 851-323
F-350	61-64	6 Cyl. 233 3.7L	800-080 801-080
	1967	6 Cyl. 300 4.9L	800-080 801-080
	88-94	V8 445 7.3L DSL (VIN M)	800-317 801-317
	94-97	V8 445 7.3L DSL (VIN F)	800-346 801-346
	87-96	6 Cyl. 300 4.9L (VIN Y)	850-323 851-323
	88-97	V8 351 5.8L (VIN H)	850-323 851-323
	88-97	V8 460 7.5L (VIN G)	850-323 851-323
F-350 HD P/U	1997	V8 351 5.8L (VIN H)	850-323 851-323
	1997	V8 460 7.5L (VIN G)	850-323 851-323
F-350 Pltfrm Stk	61-64	6 Cyl. 233 3.7L	800-080 801-080
F-350 Supr Dty	1999	V8 444 7.3L (VIN F) Mfg. Up to 12/6/98	850-312 851-312
	1999	V8 444 7.3L (VIN F) Mfg. After to 12/6/98	850-338 851-338
	99-03	V8 444 7.3L D.I. DSL (VIN F)	850-338 851-338
	03-07	V8 363 6.0L DSL (VIN P)	860-341 861-341
	1998	V6 256 4.2L (VIN 2)	860-345 861-345
Super Duty	03-07	V8 363 6.0L DSL (VIN P)	860-341 861-341
F-250/350/450/550	05-07	V10 6.8L	850-324 851-324
F-350 Supr Duty	99-04	V10 415 6.8L (VIN S)	860-345 861-345
	98-04	V8 330 5.4L (VIN L)	860-345 861-345
	05-08	V8 330 5.4L (VIN 5) 24V SOHC	850-349 851-349
F-450	88-97	V8 460 7.5L (VIN G)	850-323 851-323
F-450 Supr Duty	88-94	V8 445 7.3L DSL (VIN M)	800-317 801-317
	94-97	V8 445 7.3L DSL (VIN F)	800-346 801-346
	1999	V8 444 7.3L (VIN F) Mfg. Up to 12/6/98	850-312 851-312
	1999	V8 444 7.3L (VIN F) Mfg. After to 12/6/98	850-338 851-338
	99-03	V8 444 7.3L D.I. DSL (VIN F)	850-338 851-338
	03-07	V8 363 6.0L DSL (VIN P)	860-341 861-341
	99-04	V10 415 6.8L (VIN S)	860-345 861-345
	99-04	V8 330 5.4L (VIN L)	860-345 861-345
F-550 Supr Duty	99-03	V8 444 7.3L D.I. DSL (VIN F)	850-338 851-338
	03-07	V8 363 6.0L DSL (VIN P)	860-341 861-341
	99-03	V10 415 6.8L (VIN S)	860-345 861-345



Part Number 800-080

Year	Engine	OE Replacement Filter Oiled	OE Replacement Filter Dry
		860-345	861-345
Fairlane	99-03 V8 330 5.4L (VIN L)		
	62-67 6 Cyl. All	800-080	801-080
	66-67 V8 390 6.4L 2 bbl (VIN H&Y)	800-090	801-090
	66-67 V8 390 6.4L 4 bbl (VIN S)	800-090	801-090
Falcon	60-67 6 Cyl. All	800-080	801-080
Club Wagon	63-66 6 Cyl. All	800-080	801-080
Ranchero	60-62 6 Cyl. All	800-080	801-080
Sedan Delivery	61-65 6 Cyl. All	800-080	801-080
Focus	00-04 4 Cyl. 121 2.0L (VIN 3) DOHC	850-819	851-819
	00-04 4 Cyl. 121 2.0L (VIN P) DOHC	850-819	851-819
	03-04 4 Cyl. 140 2.3L (VIN Z) DOHC (CA, MA, NY Only)	850-819	851-819
Focus SVT	02-04 4 Cyl. 121 2.0L (VIN 5) DOHC SVT	850-819	851-819
Ford 300	63-64 6 Cyl. 233 3.7L	800-080	801-080
Ford Fullsize	1965 V8 352 5.8L 4 bbl (CA)	800-080	801-080
	1965 V8 390 6.4L 2 or 4 bbl (CA)	800-080	801-080
	63-64 6 Cyl. All	800-080	801-080
	65-66 V8 352 5.8L 4 bbl (Exc. CA) (VIN X)	800-090	801-090
	1965 V8 390 6.4L 2 or 4 bbl (VIN Z)	800-090	801-090
	66-67 V8 390 6.4L 2 or 4 bbl (Exc. CA) (VIN Z)	800-090	801-090
	66-67 V8 428 7.0L 4 bbl (Hi-Perf.) (VIN W)	800-090	801-090
	66-67 V8 428 7.0L 4 bbl (Hi-Perf.) (VIN Q)	800-090	801-090
	1967 V8 390 6.4L 2 or 4 bbl (VIN Y)	800-090	801-090
Galaxie	1964 6 Cyl. 233 3.7L (VIN B) Police	800-080	801-080
Mustang	64-67 6 Cyl. All	800-080	801-080
	1964 V8 260 4.3L 2 bbl (VIN F)	800-090	801-090
	65-67 V8 289 4.7L 2 bbl (VIN C)	800-090	801-090
	65-67 V8 289 4.7L 4 bbl (VIN A)	800-090	801-090
	65-67 V8 289 4.7L 4 bbl (VIN D)	800-090	801-090
	86-93 V8 302 5.0L (VIN E) H.O.	850-015	851-015
	88-92 V8 302 5.0L (VIN E) Police	850-015	851-015
	94-04 V6 232 3.8L (VIN 4)	860-340	861-340
	1993 V8 302 5.0L (VIN D) Cobra	850-330	851-330
	94-95 V8 302 5.0L (VIN D) Cobra	860-340	861-340
	94-95 V8 302 5.0L (VIN T) GT	860-340	861-340
	2002 V8 281 4.6L (VIN X) Bullet GT	860-345	861-345
	2003 V8 281 4.6L (VIN Y) Cobra	860-345	861-345
	03-04 V8 281 4.6L (VIN R) Mach 1	860-345	861-345
	2004 V8 281 4.6L (VIN Y) Cobra SC	860-345	861-345

Year	Engine	OE Replacement Filter	
		Oiled	Dry
		860-345	861-345
	96-04 V8 281 4.6L (VIN X) GT	860-345	861-345
	05-09 All V6 & V8	850-351	851-351
"Shelby"	10-14 5.4L Supercharged	860-399	863-399
	05-09 All V6 & V8 - Replacement Filter for Ford Racing Cold Air Kits M-9603-GTB and M-9603-V605	860-398	861-398
Probe	1990 4 Cyl. 133 2.2L (VIN C) w/cruise	850-024	851-024
Ranch Wagon	63-64 6 Cyl. 233 3.7L	800-080	801-080
	1965 V8 352 5.8L 4 bbl (VIN X)	800-080	801-080
	1965 V8 390 6.4L 2 or 4 bbl (VIN Z)	800-090	801-090
Ranchero	66-67 6 Cyl. 200 3.3L 1 bbl	800-080	801-080
	1967 V8 390 6.4L	800-090	801-090
Ranger	88-92 V6 177 2.9L (VIN T)	850-024	851-024
	89-94 4 Cyl. 140 2.3L (VIN A)	850-024	851-024
	90-94 V6 245 4.0L (VIN X)	850-024	851-024
	91-94 V6 182 3.0L (VIN U)	850-024	851-024
Ranger	1997 V6 245 4.0L (VIN X) w/Panel Air	850-106	851-106
	01-08 4 Cyl. 140 2.3L (VIN D)	850-106	851-106
	01-10 V6 245 4.0L (VIN E)	850-106	851-106
	01-03 4 Cyl. 140 2.3L (VIN D)	850-106	851-106
	01-03 V6 245 4.0L (VIN E)	850-106	851-106
	97-01 V6 245 4.0L (VIN X)	850-106	851-106
	98-01 4 Cyl. 153 2.5L (VIN C)	850-106	851-106
	98-03 V6 182 3.0L (VIN U)	850-106	851-106
	99-03 V6 182 3.0L (VIN V) Flex Fuel	850-106	851-106
	1995 V6 244 4.0L (VIN X)	860-395	861-395
	1996 V6 245 4.0L (VIN X)	860-395	861-395
	1997 V6 245 4.0L (VIN X) w/ Conical Air	860-395	861-395
	95-97 4 Cyl. 140 2.3L (VIN A)	860-395	861-395
	95-97 V6 182 3.0L (VIN U)	860-395	861-395
Sunliner	63-64 6 Cyl. 233 3.7L	800-080	801-080
Taurus	89-95 V6 182 3.0L (VIN Y) SHO	850-015	851-015
	93-95 V6 195 3.2L (VIN P) SHO	850-015	851-015
	86-88 4 Cyl. 153 2.5L (VIN D) All	850-024	851-024
	86-95 V6 182 3.0L (VIN U)	850-024	851-024
	88-95 V6 232 3.8L (VIN 4)	850-024	851-024
	89-91 4 Cyl. 153 2.5L (VIN D)	850-024	851-024
	93-95 V6 182 3.0L (VIN 1) Flex Fuel	850-024	851-024
	00-07 V6 182 3.0L (VIN 2) Flex Fuel	850-187	851-187
	00-06 V6 182 3.0L (VIN S) 24V	850-187	851-187
	00-07 V6 182 3.0L (VIN U) 12V	850-187	851-187
	1988 V6 232 3.8L (VIN 4)	850-015	851-015
	86-88 V8 302 5.0L (VIN F)	850-015	851-015
Victoria	60-64 6 Cyl. 223 3.7L	800-080	801-080
Windstar	1995 V6 232 3.8L (VIN 4)	850-024	851-024
	95-00 V6 182 3.0L (VIN U)	850-024	851-024
	96-98 V6 232 3.8L (VIN 4)	860-395	861-395
C/K Series P/U	1971 V8 307 5.0L 2 bbl (15 Series)	800-311	801-311
	1973 6 Cyl. 292 4.8L 1 bbl (VIN T)	800-311	801-311

Year	Engine	OE Replacement Filter	
		Oiled	Dry
		800-311	801-311
	1973 V8 307 5.0L 2 bbl (VIN F)	800-311	801-311
	1973 V8 307 5.0L 2 bbl (VIN X)	800-311	801-311
	1979 V8 305 5.0L 2bbl (VIN U)	800-311	801-311
	68-71 6 Cyl. 292 4.8L 1 bbl	800-311	801-311
	68-72 V8 307 5.0L 2 bbl	800-311	801-311
	80-81 V8 305 5.0L 2bbl (VIN G)	800-311	801-311
	85-86 V6 262 4.3L 4 bbl (VIN N)	800-311	801-311
	88-95 V6 262 4.3L (VIN Z)	800-311	801-311
	1968 V8 327 5.4L 4 bbl	800-314	801-314
	1970 V8 402 6.6L 4 bbl	800-314	801-314
	1971 V8 307 5.0L 2 bbl (25/35 Series)	800-314	801-314
	1972 V8 350 5.7L 4 bbl	800-314	801-314
	1976 V8 307 5.0L 2 bbl (VIN V)	800-314	801-314
	68-69 V8 396 6.5L 4 bbl	800-314	801-314
	70-72 V8 350 5.7L 2 bbl	800-314	801-314
	74-75 V8 307 5.0L 2 bbl (VIN V)	800-314	801-314
	77-78 V8 305 5.0L 2bbl (VIN U)	800-314	801-314
	1980 V8 400 6.6L 4 bbl (VIN X)	800-373	801-373
	1980 V8 454 7.4L 4 bbl (VIN S)	800-373	801-373
	80-86 V8 350 5.7L 4 bbl (VIN L)	800-373	801-373
	80-86 V8 350 5.7L 4 bbl (VIN M)	800-373	801-373
	80-86 V8 454 7.4L 4 bbl (VIN W)	800-373	801-373
	81-86 V8 307 5.0L 4 bbl (VIN F)	800-373	801-373
	81-86 V8 307 5.0L 4 bbl (VIN H)	800-373	801-373
Caballero	81-82 V6 229 3.8L 2 bbl (VIN K)	800-365	801-365
	83-84 V6 229 3.8L 2 bbl (VIN 9)	800-365	801-365
	81-84 V6 229 3.8L 2 bbl	800-365	801-365
Canyon	04-06 4 Cyl. 169 2.8L (VIN 8)	800-142	801-142
	04-06 5 Cyl. 211 3.5L (VIN 6)	800-142	801-142
	2007 4 Cyl. 174 2.9L (VIN 9)	800-142	801-142
	2007 5 Cyl. 217 3.7L (VIN E)	800-142	801-142
Denali XL	02-06 V8 365 6.0L (VIN U)	850-135	851-135
Envoy	02-09 6 Cyl. 254 4.2L (VIN S) Vortec	800-109	801-109
	98-01 V6 262 4.3L (VIN W)	850-342	851-342
Envoy XL	03-06 6 Cyl. 256 4.2L (VIN S) Vortec	800-109	801-109
	03-04 V8 325 5.3L (VIN P)	800-109	801-109
	05-06 V8 325 5.3L (VIN M)	800-109	801-109
Envoy XUV	04-05 6 Cyl. 254 4.2L (VIN S) Vortec	800-109	801-109
	04-05 V8 325 5.3L (VIN P&M)	800-109	801-109
Heavy Duty Truck	72-74 V8 350 4 bbl	800-070	801-070
Jimmy	1979 V8 305 5.0L 2bbl (VIN U)	800-311	801-311
	70-72 V8 307 5.0L 2 bbl	800-311	801-311
	80-81 V8 305 5.0L 2bbl (VIN G)	800-311	801-311
	1971 V8 307 5.0L 2 bbl	800-314	801-314
	1976 V8 307 5.0L 2 bbl (VIN V)	800-314	801-314
	69-70 V8 350 5.7L 4 bbl	800-314	801-314
	70-72 V8 350 5.7L 2 bbl	800-314	801-314
	74-75 V8 307 5.0L 2 bbl (VIN V)	800-314	801-314
	77-78 V8 305 5.0L 2bbl (VIN U)	800-314	801-314
	1980 V8 400 6.6L 4 bbl (VIN R)	800-373	801-373

Year	Engine	OE Replacement Filter	
		Oiled	Dry
		800-373	801-373
	1982 V8 305 5.0L 4 bbl (VIN F)	800-373	801-373
	80-86 V8 350 5.7L 4 bbl (VIN L)	800-373	801-373
	82-86 V8 305 5.0L 4 bbl (VIN H)	800-373	801-373
	95-01 V6 262 4.3L (VIN W)	850-342	851-342
Jimmy Full Size	1971 6 Cyl. 250 2 bbl	800-070	801-070
	1973 6 Cyl. 292 1 bbl	800-070	801-070
	70-73 6 Cyl. 250 1 bbl	800-070	801-070
	74-78 6 Cyl. 250 1 bbl w/o P.B.	800-070	801-070
P Series Chassis	98-00 V6 262 4.3L (VIN W)	850-118	851-118
	98-00 V8 350 5.7L (VIN R)	850-118	851-118
	98-00 V8 395 6.5L DSL (VIN F)	850-118	851-118
	98-00 V8 454 7.4L (VIN J)	850-118	851-118
P Series Van	96-97 V8 350 5.7L (VIN R)	850-118	851-118
	96-97 V6 262 4.3L (VIN W)	850-118	851-118
R/V Series	1988 V8 350 5.7L 4 bbl (VIN M)	800-373	801-373
PickUps	1989 V8 454 7.4L 4 bbl (VIN W)	800-373	801-373
	87-91 V8 454 7.4L (VIN N)	800-373	801-373
S-15 Jimmy	85-88 4 Cyl. 151 2.5L (VIN E)	800-015	801-015
	88-94 V6 262 4.3L (VIN Z)	800-365	801-365
	91-98 V6 173 2.8L (VIN R)	800-365	801-365
	86-89 V6 173 2.8L F.I.	800-365	801-365
	88-94 V6 262 4.3L F.I.	800-365	801-365
	92-94 V6 262 4.3L (VIN W)	850-342	851-342
S-15 Pick-Up	86-90 V6 173 2.8L F.I.	800-365	801-365
	88-90 V6 262 4.3L F.I.	800-365	801-365
	85-90 4 Cyl. 151 2.5L (VIN E)	800-015	801-015
	86-90 V6 173 2.8L (VIN R)	800-365	801-365
	88-90 V6 262 4.3L (VIN Z)	800-365	801-365
Safari Van	85-90 4 Cyl. 151 2.5L (VIN E)	800-015	801-015
	90-91 V6 262 4.3L 4 bbl (VIN B) H.O.	800-365	801-365
	86-94 V6 262 4.3L 4 bbl (VIN Z)	800-365	801-365
	92-01 V6 262 4.3L (VIN W)	850-342	851-342
	02-05 V6 262 4.3L (VIN X)	850-342	851-342
	1985 V6 262 4.3L (VIN N)	800-365	801-365
	86-94 V6 262 4.3L 4 bbl (VIN Z)	800-365	801-365
	90-91 V6 262 4.3L 4 bbl (VIN B) H.O.	800-365	801-365
Savana Van 1500	96-00 V6 262 4.3L (VIN W)	850-118	851-118
	96-02 V8 305 5.0L (VIN M)	850-118	851-118



Part Number 850-118

Year	Engine	OE Replacement Filter	
		Oiled	Dry
96-02	V8 350 5.7L (VIN R)	850-118	851-118
2500/3500	99-02 V8 395 6.5L DSL (VIN F)	850-118	851-118
Savana Van 2500	96-00 V8 305 5.0L (VIN M)	850-118	851-118
2500/3500	96-00 V8 350 5.7L (VIN R)	850-118	851-118
2500	96-02 V6 262 4.3L (VIN W)	850-118	851-118
3500	96-02 V8 454 7.4L (VIN J)	850-118	851-118
Sierra	63-69 6 Cyl. 230 1 bbl w/ Std. Filter	800-070	801-070
	70-71 6 Cyl. 250 1 bbl	800-070	801-070
	72-78 6 Cyl. 250 1 bbl w/o P.B.	800-070	801-070
Sierra 1500	99-14 V6 262 4.3L (VIN W&X)	850-135	851-135
	99-14 V8 292 4.8L (VIN V)	850-135	851-135
	01-15 V8 325 5.3L (VIN T)	850-135	851-135
	2002 V6 262 4.3L (VIN X) Flex Fuel	850-135	851-135
Sierra 1500 P/U	96-98 V6 262 4.3L (VIN W)	800-396	801-396
	96-98 V8 305 5.0L (VIN M)	800-396	801-396
	96-98 V8 350 5.7L (VIN R)	800-396	801-396
	97-98 V8 395 6.5L DSL (VIN S)	800-396	801-396
Sierra 1500HD	01-06 V8 365 6.0L (VIN U)	850-135	851-135
Sierra 2500,3500	01-06 V8 365 6.0L (VIN U)	850-135	851-135
Sierra 2500	96-98 V8 305 5.0L (VIN M)	800-396	801-396
2500,3500 P/U	96-98 V8 350 5.7L (VIN R)	800-396	801-396
	96-98 V8 454 7.4L (VIN J)	800-396	801-396
	97-98 V8 395 6.5L DSL	800-396	801-396
Sierra 2500 P/U	97-98 V8 395 6.5L DSL (VIN F)	800-396	801-396
Sierra 2500HD	01-06 V8 365 6.0L (VIN U)	850-135	851-135
	01-06 V8 496 8.1L (VIN G) Vortec	850-135	851-135
	01-05 V8 403 6.6L (VIN 1) Dmx	850-135	851-135
	06-09 6.6L Duramax	860-161	861-161
Sierra 3500	01-06 V8 496 8.1L (VIN G) Vortec	850-135	851-135
	01-05 V8 403 6.6L (VIN 1) Dmx	850-135	851-135
	06-09 6.6L Duramax	860-161	861-161
Sierra C3 P/U	2001 V8 365 6.0L (VIN U)	850-135	851-135
Sierra Chassis Cab	01-06 V8 365 6.0L (VIN U)	850-135	851-135
	01-06 V8 496 8.1L (VIN G) Vortec	850-135	851-135
	06-10 6.6L Duramax	860-161	861-161
	01-05 V8 403 6.6L (VIN 1) Dmx	850-135	851-135
Sierra Classic 1500	1999 V8 305 5.0L (VIN M)	800-396	801-396

Year	Engine	OE Replacement Filter	
		Oiled	Dry
1999	V8 350 5.7L (VIN R)	800-396	801-396
Classic 2500,3500	2000 V8 454 7.4L (VIN J)	800-396	801-396
	99-00 V8 350 5.7L (VIN R)	800-396	801-396
	99-00 V8 395 6.5L DSL (VIN F)	800-396	801-396
	02-06 V8 365 6.0L (VIN U)	850-135	851-135
Sonoma	2003 4 Cyl. 134 2.2L (VIN H)	850-342	851-342
	00-03 4 Cyl. 134 2.2L (VIN 5) Alt. Fuel	850-342	851-342
	92-05 V6 262 4.3L (VIN W&X)	850-342	851-342
	94-03 4 Cyl. 134 2.2L (VIN 4)	850-342	851-342
Sonoma P/U	91-93 4 Cyl. 151 2.5L (VIN A&E)	800-015	801-015
	91-93 V6 173 2.8L (VIN R)	800-365	801-365
	91-95 V6 262 4.3L (VIN Z)	800-365	801-365
	91-93 V6 173 2.8L F.I.	800-365	801-365
	91-95 V6 262 4.3L F.I.	800-365	801-365
Suburban	1979 V8 305 5.0L 2 bbl (VIN U)	800-311	801-311
	68-69 6 Cyl. 250 4.1L 1 bbl	800-311	801-311
	68-72 V8 307 5.0L 2 bbl	800-311	801-311
	1968 V8 327 5.4L 4 bbl	800-314	801-314
	1970 V8 402 6.6L 4 bbl	800-314	801-314
	1971 V8 307 5.0L 2 bbl	800-314	801-314
	1976 V8 305 5.0L 2 bbl (VIN V)	800-314	801-314
	68-69 V8 396 6.5L 4 bbl	800-314	801-314
	70-72 V8 350 5.7L 4 bbl	800-314	801-314
	74-75 V8 350 5.7L 2 bbl (VIN V)	800-314	801-314
	77-78 V8 305 5.0L 2 bbl (VIN U)	800-314	801-314
	1970 V8 454 7.4L 4 bbl	800-350	801-350
	1980 V8 400 6.6L 4 bbl (VIN X)	800-373	801-373
	80-86 V8 350 5.7L 4 bbl (VIN L&M)	800-373	801-373
	80-86 V8 454 7.4L 4 bbl (VIN W)	800-373	801-373
	82-86 V8 305 5.0L 4 bbl (VIN H)	800-373	801-373
	89-92 V8 454 7.4L (VIN N)	800-373	801-373
	96-98 V8 454 7.4L (VIN J)	800-396	801-396
	96-99 V8 350 5.7L (VIN R)	800-396	801-396
	97-99 V8 395 6.5L DSL (VIN F)	800-396	801-396
Top Kick	03-07 V8 6.6L DSL & 8.1L Gas	800-316	801-316
Cyclone	91-92 V6 262 4.3L Turbo (VIN Z)	850-342	851-342
Typhoon	1964 6 Cyl. 232 3.8L	800-080	801-080
	92-93 V6 262 4.3L Turbo (VIN Z)	850-342	851-342
Vans P Series	1991 V8 454 7.4L (VIN N)	800-373	801-373
Vans P Series	80-88 V8 350 5.7L 4 bbl (VIN L&M)	800-373	801-373
	81-89 V8 454 7.4L 4 bbl (VIN W)	800-373	801-373
Vans Rally & Vandura	1991 V8 454 7.4L (VIN N)	800-373	801-373
Yukon	96-00 V8 350 5.7L (VIN R)	800-396	801-396
	97-99 V8 395 6.5L DSL (VIN S)	800-396	801-396
	00-10 V8 292 4.8L (VIN V)	850-135	851-135
	00-10 V8 325 5.3L (VIN T)	850-135	851-135
	02-10 V8 325 5.3L (VIN Z) Flex Fuel	850-135	851-135
Yukon Denali	99-00 V8 350 5.7L (VIN R)	800-396	801-396
	01-14 V8 365 6.0L (VIN U)	850-135	851-135
Yukon XL	00-14 V8 325 5.3L (VIN T)	850-135	851-135

Year	Engine	OE Replacement Filter	
		Oiled	Dry
00-14	V8 365 6.0L (VIN U)	850-135	851-135
01-06	V8 496 8.1L (VIN G) Vortec	850-135	851-135
02-14	V8 325 5.3L (VIN Z) Flex Fuel	850-135	851-135
CR-V	97-01 4 Cyl. 2.0L	850-204	851-204
Civic	96-00 4 Cyl. 1.6L VTEC DOHC	850-204	851-204



Part Number 850-342

Year	Engine	OE Replacement Filter	
		Oiled	Dry
Hummer	1993 V8 6.2L DSL (VIN Y)	800-170	801-170
	94-99 V8 6.5L DSL (VIN Y)	800-170	801-170
	96-04 V8 6.5L DSL (VIN Z)	800-170	801-170
H1	02-06 V8 6.5L DSL (VIN Z,2&3)	800-170	801-170
H2	03-09 V8 365 6.0L H.O. (VIN N)	720-182	721-182
H3	2006 5 Cyl. 3.5L	800-142	801-142
FX35	2007 5 Cyl. 3.7L	800-142	801-142
	03-05 V6 3.5L F.I. DOHC 24V	850-031	851-031
FX45	03-04 V8 4.5L	850-229	851-229
G20	91-96 4 Cyl. 2.0L (VIN C)	850-031	851-031
	99-02 4 Cyl. 2.0L (SR20DE)	850-031	851-031
G35	03-05 V6 3.5L (VQ35DE)	850-031	851-031
I30	96-97 V6 3.0L (VIN C) 24V	850-031	851-031
	98-01 V6 3.0L (VQ30DE)	850-031	851-031
I35	02-05 V6 3.5L (VQ35DE)	850-031	851-031
J30	93-97 V6 3.0L (VIN A) 24V	850-031	851-031
M30	90-92 V6 3.0L (VIN H)	850-031	851-031
M45	03-04 V8 4.5L (VIN A)	850-229	851-229
Q45	02-04 V8 4.5L (VIN A&B)	850-229	851-229
QX4	1997 V6 3.3L (VIN A) 24V	850-031	851-031
	01-04 V6 3.5L (VQ35DE)	850-031	851-031
	98-00 V6 3.3L (VG33E)	850-031	851-031
IHC Pick-Up	69-71 6 Cyl. 232 3.8L 1 bbl	800-090	801-090
	69-75 V8 304 5.0L 2 bbl	800-090	801-090
	71-74 V8 304 5.0L 2 bbl LPG	800-090	801-090
	71-73 V8 345 5.7L 2 bbl	800-090	801-090
	72-74 6 Cyl. 258 4.2L 2 bbl	800-090	801-090
	72-75 V8 392 6.4L 2 bbl	800-090	801-090
	74-75 V8 345 5.7L 2 bbl	800-090	801-090
Metro	69-75 V8 304 5.0L 2 bbl	800-090	801-090
	1971 4 Cyl. 196 3.2L 1 bbl	800-090	801-090
	1971 6 Cyl. 232 3.8L 1 bbl	800-090	801-090
	72-74 6 Cyl. 258 4.2L 1 bbl	800-090	801-090
Scout	69-70 4 Cyl. 196 3.2L 1 bbl	800-090	801-090
	69-70 V8 304 5.0L 2 bbl	800-090	801-090
	1980 V8 304 5.0L 2 bbl	800-090	801-090
	1980 V8 345 5.6L 2 bbl (Exc. CA)	800-090	801-090
	71-72 6 Cyl. 232 3.8L 1 bbl	800-090	801-090
	71-80 V8 304 5.0L 2 bbl	800-090	801-090
	71-74 V8 345 5.6L 2 bbl	800-090	801-090
	71-80 4 Cyl. 196 3.2L 1 bbl	800-090	801-090

Year	Engine	OE Replacement Filter	
		Oiled	Dry
	72-75 6 Cyl. 258 4.2L 1 bbl	800-090	801-090
	75-80 V8 345 5.6L 2 bbl & 4 bbl	800-090	801-090
	77-80 6 Cyl. 198 3.2L DSL	800-090	801-090
Terra Pick-Up	76-80 4 Cyl. 196 3.2L 1 bbl	800-090	801-090
	76-80 V8 304 5.0L 2 bbl	800-090	801-090
	76-80 V8 345 5.6L 2 bbl & 4 bbl	800-090	801-090
	77-80 6 Cyl. 198 3.2L DSL	800-090	801-090
Travelall	69-71 6 Cyl. 198 3.2L DSL	800-090	801-090
	69-75 V8 304 5.0L 2 bbl	800-090	801-090
	71-75 V8 345 5.6L 2 bbl & 4 bbl	800-090	801-090
	72-74 6 Cyl. 198 3.2L DSL	800-090	801-090
Traveler	72-75 V8 392 6.4L 2 bbl & 4 bbl	800-090	801-090
	76-80 4 Cyl. 196 3.2L 1 bbl	800-090	801-090
	76-80 6 Cyl. 198 3.2L DSL	800-090	801-090
	76-80 V8 304 5.0L 2 bbl	800-090	801-090
	76-80 V8 345 5.6L 2 bbl & 4 bbl	800-090	801-090
	1980 6 Cyl. 198 3.2L DSL	800-090	801-090
Ascender	03-05 6 Cyl. 254 4.2L (VIN S) Vortec	800-109	801-109
	03-05 V8 325 5.3L (VIN T)	800-109	801-109
	96-00 4 Cyl. 2.2L (VIN 4)	850-342	851-342
	2000 4 Cyl. 134 2.2L (VIN 5) Alt. Fuel	850-342	851-342
	97-00 V6 4.3L (VIN X)	850-342	851-342
Impulse	1992 4 Cyl. 1.8L (VIN 8)	850-205	851-205
	1992 4 Cyl. 1.6L Turbo (VIN 4)	850-205	851-205
i280	2006 4 Cyl. 169 2.8L (VIN 8) 16V	800-142	801-142
i350	2006 5 Cyl. 211 3.5L (VIN 6) 20V	800-142	801-142
i290	2007 4 Cyl. 174 2.9L (VIN 9)	800-142	801-142
i370	2007 5 Cyl. 217 3.7L (VIN E)	800-142	801-142
Pick-Up	91-94 V6 189 3.1L	800-365	801-365
	1987 4 Cyl. 2.2L DSL (VIN S) CA	850-031	851-031
	86-87 4 Cyl. 2.2L DSL (VIN U)	850-031	851-031
Rodeo	91-92 V6 189 3.1L	800-365	801-365
Trooper	90-91 V6 173 2.8L F.I.	800-365	801-365
Trooper II	1989 V6 173 2.8L F.I.	800-365	801-365
Cherokee	74-83 6 Cyl. 258 4.2L 1&2 bbl. (VIN A&C)	800-080	801-080
	84-86 V6 173 2.8L 2 bbl (VIN W)	800-080	801-080
	74-78 V8 360 5.9L 4 bbl (VIN P)	800-310	801-310
	74-79 V8 401 6.6L 4 bbl (VIN Z)	800-310	801-310
	74-83 V8 360 5.9L 2 bbl (VIN N)	800-310	801-310



Part Number 860-161



Part Number 800-311

Year	Engine	OE Replacement Filter	
		Oiled	Dry
87-90	4 Cyl. 150 2.5L (VIN E&H)	850-018	851-018
87-01	6 Cyl. 242 4.0L (VIN L,M &S)	850-018	851-018
91-00	4 Cyl. 150 2.5L (VIN P)	850-018	851-018
1986	4 Cyl. 150 2.5L (VIN H)	850-046	851-046
CJ-5	72-78	6 Cyl. 232 3.8L 1 bbl (VIN E)	800-080 801-080
	72-83	6 Cyl. 258 4.2L 1&2 bbl. (VIN A&C)	800-080 801-080
	80-83	4 Cyl. 151 2.5L (VIN B)	800-080 801-080
	72-81	V8 304 5.0L 2 bbl (VIN H)	800-310 801-310
	67-71	V6 225 3.7L 2 bbl	800-311 801-311
CJ-6	72-75	6 Cyl. 258 4.2L 1 bbl (VIN A)	800-080 801-080
	72-75	6 Cyl. 258 4.2L 1 bbl (VIN E)	800-080 801-080
	72-75	V8 304 5.0L 2 bbl (VIN H)	800-310 801-310
	67-71	V6 225 3.7L 2 bbl	800-311 801-311
CJ-7	76-78	6 Cyl. 232 3.8L 1 bbl (VIN E)	800-080 801-080
	76-86	6 Cyl. 258 4.2L 1&2 bbl. (VIN A&C)	800-080 801-080
	80-86	4 Cyl. 151 2.5L 1&2 bbl (VIN B&U)	800-080 801-080
	76-81	V8 304 5.0L 2 bbl (VIN H)	800-310 801-310
Comanche	1986	V6 173 2.8L 2 bbl (VIN W)	800-080 801-080
	87-92	4 Cyl. 150 2.5L (VIN E,H&P)	850-018 851-018
	87-92	6 Cyl. 242 4.0L (VIN L,M &S)	850-018 851-018
	1986	4 Cyl. 150 2.5L (VIN H)	850-046 851-046
Commando	1967	V6 225 3.7L 2 bbl	800-311 801-311
DJ-5	1973	6 Cyl. 258 4.2L 1&2 bbl. (VIN A)	800-080 801-080
	72-73	6 Cyl. 232 3.8L 1 bbl (VIN E)	800-080 801-080
DJ-5 & 6	67-70	V6 225 3.7L 2 bbl	800-311 801-311
Grand Chrk	1998	V8 360 5.9L (VIN Z)	850-048-1 851-048-1
	93-04	6 Cyl. 242 4.0L (VIN S)	850-048-1 851-048-1
	93-98	V8 318 5.2L (VIN Y)	850-048-1 851-048-1
	99-04	V8 287 4.7L (VIN N)	850-048-1 851-048-1
Grand Wagoneer	84-86	6 Cyl. 258 4.2L 1&2 bbl. (VIN C)	800-080 801-080
	84-91	V8 360 5.9L 2 bbl (VIN N&7)	800-310 801-310
J Series P/U	1969	V8 350 2 bbl	800-311 801-311
	70-71	6 Cyl. 232 3.8L 1 bbl	800-080 801-080
	72-76	6 Cyl. 258 4.2L 1 bbl. (VIN A)	800-080 801-080
	77-78	6 Cyl. 258 4.2L 2 bbl. (VIN C)	800-080 801-080
	1971	V8 304 5.0L 2 bbl (VIN 9)	800-310 801-310
	1971	V8 360 5.9L 2 bbl (VIN 9)	800-310 801-310
	1972	V8 304 5.0L 2 bbl (VIN H)	800-310 801-310

Year	Engine	OE Replacement Filter	
		Oiled	Dry
72-88	V8 360 5.9L 2&4 bbl (VIN N&P)	800-310	801-310
74-78	V8 401 6.6L 4 bbl (VIN Z)	800-310	801-310
70-71	V8 350 2 bbl	800-314	801-314
Jeeperster	72-73	6 Cyl. 232 3.8L 1 bbl (VIN E)	800-080 801-080
	72-73	6 Cyl. 258 4.2L 1 bbl. (VIN A)	800-080 801-080
	72-73	V8 304 5.0L 2 bbl (VIN H)	800-310 801-310
	67-71	V6 225 3.7L 2 bbl	800-311 801-311
JK	07-11	3.8L V6	860-423 861-423
	12-15	3.6L V6	860-425 861-425
Liberty	02-07	V6 225 3.7L (VIN K)	850-233 851-233
Scrambler	81-83	4 Cyl. 151 2.5L 2 bbl (VIN B)	800-080 801-080
	81-85	6 Cyl. 258 4.2L 2 bbl. (VIN C)	800-080 801-080
	83-85	4 Cyl. 150 2.5L 1 bbl (VIN U)	800-080 801-080
TJ	99-03	4 Cyl. 150 2.5L (VIN P) (Canada)	850-114 851-114
	99-06	6 Cyl. 242 4.0L (VIN S) (Canada)	850-114 851-114
Wagoneer	70-73	6 Cyl. 232 3.8L 1 bbl	800-080 801-080
	70-73	6 Cyl. 258 4.2L 1 bbl.	800-080 801-080
	80-83	6 Cyl. 258 4.2L 2 bbl. (VIN C)	800-080 801-080
	84-86	V6 173 2.8L 2 bbl (VIN W)	800-080 801-080
	72-83	V8 360 5.9L 2&4 bbl (VIN N&P)	800-310 801-310
	74-78	V8 401 6.6L 4 bbl (VIN Z)	800-310 801-310
	70-71	V8 350 2 bbl	800-314 801-314
	1987	4 Cyl. 150 2.5L (VIN H)	850-018 851-018
	87-90	6 Cyl. 242 4.0L (VIN L&M)	850-018 851-018
	1986	4 Cyl. 150 2.5L (VIN H)	850-046 851-046
	87-90	6 Cyl. 258 4.2L 2 bbl. (VIN C,M &T)	800-080 801-080
	1993	4 Cyl. 150 2.5L (VIN P)	850-046 851-046
	87-88	4 Cyl. 150 2.5L (VIN H)	850-046 851-046
	89-95	4 Cyl. 150 2.5L (VIN E&P)	850-046 851-046
	91-95	6 Cyl. 242 4.0L (VIN S)	850-046 851-046
	97-03	4 Cyl. 150 2.5L (VIN P)	850-114 851-114
Range Rover	96-00	V8 4.0L (VIN 2)	850-119 851-119
	96-03	V8 4.6L (VIN 4&6)	850-119 851-119
Rang Rover S.E.	1995	V8 4.0L (VIN 2)	850-119 851-119
ES300	02-03	V6 3.0L (1MZ-FE)	850-219 851-219
ES330	04-05	V6 3.3L (3MZ-FE)	850-219 851-219
GX470	03-09	V8 4.7L (2UZ-FE) 32V	850-144 851-144
LX470	98-07	V8 4.7L (2UZ-FE) 32V	850-144 851-144
RX330	04-05	V6 3.0L (3MZ-FE)	850-219 851-219
SC300	92-00	6 Cyl. 3.0L (2JZ-GE) 24V	850-054 851-054
SC400	92-00	V8 4.0L (1UZ-FE) 32V	850-054 851-054
Blackwood	2002	V8 330 5.4L (VIN A)	860-345 861-345
Continental	63-65	V8 430 7.0L 4 bbl	800-080 801-080
	66-68	V8 462 7.6L 4 bbl	800-080 801-080
	86-87	V8 302 5.0L (VIN F)	850-015 851-015
	88-94	V6 232 3.8L (VIN 4)	850-024 851-024
	95-02	V8 281 4.6L (VIN V)	860-345 861-345



Year	Engine	OE Replacement Filter	
		Oiled	Dry
Mark VII	86-92	V8 302 5.0L (VIN E,F&M)	850-015 851-015
Mark LT P/U	05-06	V8 330 5.4L 24V	850-349 851-349
Navigator	99-04	V8 330 5.4L (VIN A&R) DOHC	860-345 861-345
	1998	V8 330 5.4L (VIN L) SOHC	860-345 861-345
	05-06	V8 330 5.4L 24V (VIN S) SOHC	850-349 851-349
Town Car	86-90	V8 302 5.0L (VIN F)	850-330 851-330
	91-06	V8 281 4.6L (VIN W)	850-330 851-330
3	04-09	4 cyl. 2.0L (VIN F,G, PZEV)	850-227 851-227
	06-09	4 cyl. 2.3L (VIN 3,4, PZEV)	850-227 851-227
	07-09	4 cyl. 2.3L Turbo (VIN L,M, PZEV)	850-227 851-227
5	06-09	4 cyl. 2.3L (VIN 3, L)	850-227 851-227
929	1995	V6 3.0L	850-205 851-205
	92-94	V6 3.0L DOHC	850-205 851-205
B2300 P/U	1994	4 Cyl. 2.3L (VIN A)	850-024 851-024
	02-03	4 Cyl. 2.3L (VIN D)	850-106 851-106
	95-97	4 Cyl. 140 2.3L (VIN A)	860-395 861-395
B2500 P/U	98-01	4 Cyl. 2.5L (VIN C)	850-106 851-106
B3000 P/U	1994	V6 3.0L (VIN U)	850-024 851-024
	98-03	V6 3.0L (VIN U)	850-106 851-106
	95-97	V6 3.0L (VIN U)	860-395 861-395
B4000 P/U	1994	V6 4.0L (VIN X)	850-024 851-024
	98-03	V6 4.0L (VIN E&X)	850-106 851-106
	95-97	V6 4.0L (VIN X)	860-395 861-395
Navajo	91-94	V6 4.0L	850-024 851-024
Tribute	01-04	4 Cyl. 2.0L (VIN B) 16V	850-187 851-187
	05-06	4 Cyl. 2.0L (VIN Z) 16V	850-187 851-187
	01-06	V6 3.0L (VIN 1) 24V	850-187 851-187
C230	1998	4 Cyl. 2.3L	850-270 851-270
	99-00	4 Cyl. 2.3L SC	850-270 851-270
C280	98-00	V6 2.8L	850-270 851-270
CLK 320	98-02	V6 3.2L	850-270 851-270
CLK 320 Cbrlt.	02-03	V6 3.2L	850-270 851-270
SLR McLaren	2005	V8 5.4L 24V SC	850-270 851-270
ML 320	98-03	V6 3.2L	850-270 851-270
ML 350	03-05	V6 3.7L 18V	850-270 851-270
	2006	V6 3.5L 24V	850-270 851-270
ML 430	99-01	V8 4.3L	850-270 851-270
ML 500	02-06	V8 5.0L	850-270 851-270
ML 55 AMG	00-02	V8 5.5L	850-270 851-270
Breezeway	65-67	V8 390 6.4L 2&4 bbl	800-080 801-080
Caliente	64-67	6 Cyl. 200 3.3L 1 bbl	800-080 801-080
	66-67	V8 390 6.4L 2 bbl (VIN H)	800-090 801-090
Capri	66-67	6 Cyl. 200 3.3L 1 bbl	800-080 801-080
	1986	V8 302 5.0L (VIN M) H.O.	850-015 851-015
Colony Park	1965	V8 390 6.4L 2&4 bbl	800-080 801-080
Comet	1960	6 Cyl. All (Closed air housing)	800-080 801-080
	61-64	6 Cyl. All	800-080 801-080

Year	Engine	OE Replacement Filter	
		Oiled	Dry
65-68	6 Cyl. 200 3.3L 1 bbl	800-080	801-080
66-67	V8 390 6.4L 2 bbl	800-090	801-090
Cougar	1967	V8 289 4.7L 2 or 4 bbl	800-090 801-090
	1988	V8 232 3.8L (VIN 4)	850-015 851-015
	86-88	V8 302 5.0L (VIN F)	850-015 851-015
County Cruiser	1963	6 Cyl. 200 3.3L 1 bbl	800-080 801-080
Cummuter	1965	V8 390 6.4L 2&4 bbl	800-080 801-080
Cyclone	1964	6 Cyl. 200 3.3L 1 bbl	800-080 801-080
	66-67	V8 289 4.7L 2 or 4 bbl	800-090 801-090
	66-67	V8 390 6.4L 2&4 bbl	800-090 801-090
Grand Marquis	92-07	V8 281 4.6L (VIN W)	850-330 851-330
Marauder	1965	V8 390 6.4L 2&4 bbl	800-080 801-080
Mariner	05-08	4 Cyl. 121 2.9L (VIN Z)	850-187 851-187
	05-08	V6 182 3.0L (VIN 1)	850-187 851-187
Mercury Fullsize	65-67	V8 390 6.4L 2&4 bbl	800-090 801-090
	65-67	V8 410 6.7L 4 bbl	800-090 801-090
	65-67	V8 428 7.0L 4 bbl	800-090 801-090
Meteor	62-63	6 Cyl. All	800-080 801-080
Montclair	1965	V8 390 6.4L 2&4 bbl	800-080 801-080
Monterey	1965	V8 390 6.4L 2&4 bbl	800-080 801-080
Mountaineer	1997	V8 302 5.0L (VIN P) w/Panel Air	850-106 851-106
	98-01	V8 245 4.0L (VIN E) SOHC	850-106 851-106
	98-01	V8 302 5.0L (VIN P)	850-106 851-106
	1997	V8 302 5.0L (VIN P) w/Conical Air	860-196 861-196
Park Lane	1965	V8 390 6.4L 2&4 bbl	800-080 801-080
Sable	1986	4 Cyl. 153 2.5L (VIN D) All	850-024 851-024
Sable	86-95	V6 182 3.0L (VIN U)	850-024 851-024
	88-95	V6 232 3.8L (VIN 4)	850-024 851-024
	00-07	V6 182 3.0L (VIN S) 24V	850-187 851-187
	00-06	V6 182 3.0L (VIN U) 12V	850-187 851-187
	00-07	V6 182 3.0L (VIN 2) Flex Fuel	850-187 851-187
Villager	62-67	6 Cyl. All	800-080 801-080
Cooper	02-06	4 Cyl. 1.6L	850-239 851-239
B10	1980	6 Cyl. 2.4L (L24E)	850-031 851-031
200SX	95-98	4 Cyl. 1.6L (GA16DE)	850-031 851-031
	95-98	4 Cyl. 2.0L (SR20DE)	850-031 851-031



Part Number 850-024









# KEEP YOUR PREMIUM FILTER CLEAN



P/N 790-551

AIRAIID® cleaning solution is uniquely formulated to clean without damaging the gauze filter media. AIRAIID® performance oil forms an additional line of defense against dirt and improved capacity. Clean your AIRAIID® filter every 30,000 to 50,000 miles for normal driving, or more often for off-road and heavy dust conditions.

### Check Yearly

If your annual mileage is low, be sure to check the filter once a year to see if oiling is needed.

### Use Only AIRAIID® Cleaning Solution:

Use only AIRAIID® cleaning solution to clean your AIRAIID® filter. Never use gasoline, detergents, steam cleaning or parts solvent.

### Oil After Cleaning: \*Not necessary with SynthaMax® filter

Your AIRAIID® premium filter is pre-oiled and ready to use right out of the package. Always oil your AIRAIID® premium filter after each cleaning.

Use only AIRAIID® filter performance oil. Never use transmission fluid, motor oil, diesel fuel, or light weight oils.



**SPECIALLY FORMULATED TO CLEAN DRY FILTERS IN TWO SIMPLE STEPS!**



P/N 790-558



1. Clean - Gently shake off and brush away excess dirt. Spray on AIRAIID® cleaning solution so that the filter is fully saturated, and let soak for 10 minutes. Rinse filter from the inside out until the water comes through clear. Use only low pressure from a tap or garden hose.



2. Dry - Allow filter to air dry. A fan may be used to speed up the process. DO NOT use heated air blowers, compressed air or open flame.



3. Apply Oil\* - Make one careful application of AIRAIID® Performance oil to each filter pleat on the outside of the filter only. Allow oil to seep into the filter for 20 minutes. Lightly re-oil any areas that still appear dry.

\*Not necessary with the SynthaMax® filters

790-550	12oz Cleaner, 8oz Squeeze Oil
790-551	12oz Cleaner, 6.25oz Aerosol Oil
790-554	12oz Cleaner
790-555	8oz Squeeze Oil
790-556	6.25oz Aerosol Oil
790-560	12oz Cleaner, 8oz BLUE Squeeze Oil
790-565	8oz BLUE Squeeze Oil
790-558	24oz Dry Filter Cleaning Solution



### NO HASSLE LIFETIME WARRANTY

Most AIRAIID® products are backed by our "NO-HASSLE!" Warranty. Simply stated, if an applicable AIRAIID® product fails for whatever reason, AIRAIID® will replace it for a period of one year from the date of purchase. Further, most AIRAIID filters are covered by our "No Hassle!" Warranty for the life of the vehicle. Filters that are intended for competition use (such as our Race Day and Track Day product lines) and any products that are used in racing or competition are excluded.

To get a warranty replacement, just call the AIRAIID® customer service department toll free. AIRAIID® will provide an RMA number; place that RMA number on the outside of the box and send it back to AIRAIID®. It's that simple.

Please note: All products and filter(s) must have the AIRAIID® name on it to be eligible for warranty. AIRAIID® is not responsible for subsequent damage, labor costs, freight damage, loss of time or return shipping costs. Please visit our website for detailed warranty information on each product line.

### EMISSIONS INFORMATION

### CUSTOMER SERVICE

Product Sales: AIRAIID® products are sold through a large nationwide network of distributors as well as mail order and internet dealers. If you are not familiar with a distributor in your area, you can click the WHERE TO BUY heading on our web site or simply call one of our customer service representatives.

Shipping: AIRAIID® ships via UPS, Fed-Ex, Priority Mail and common carrier. We make every effort to ship all orders received by MST the same day. All AIRAIID® products are carefully packed before shipping, and any shipping damage claims must be filed with the carrier.

Returns: All returns require an RMA number. Call or fax your request. Not responsible for typographic errors. We reserve the right, without notice, to change any material, specification, part numbers or labeling without incurring any obligation to the buyer for past or future merchandise products.