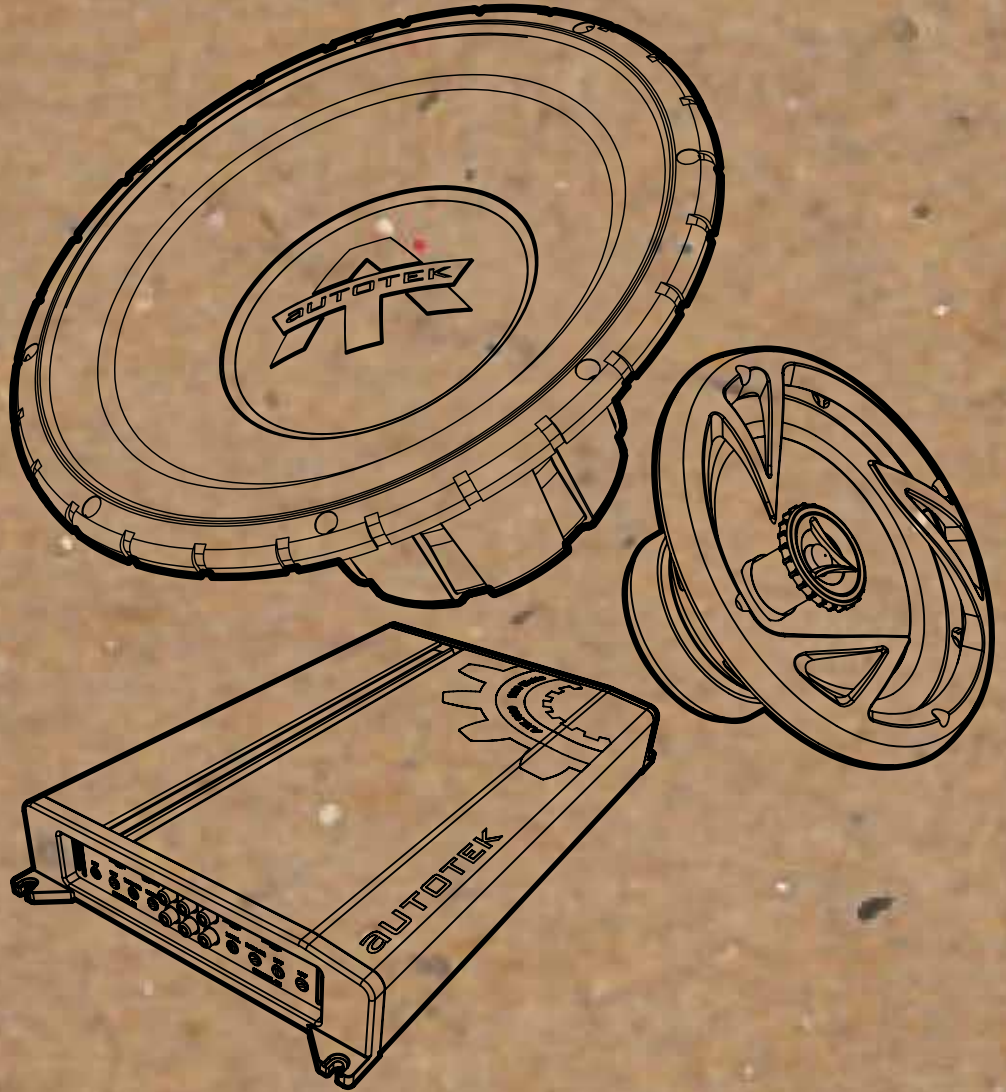




AUTOTEK®



2013 Product Line



SHOWING OFF FOR 30 YEARS

Autotek has been going to SPL, SQ contests, trade shows, jamborees, cruises, Cars and Coffee, and Show and Shines for nearly 30 years. In the early 80's, Autotek was founded by automotive trendsetters with a demand for real audio in their cars, trucks and garage-built projects. From an ancient Dolby B auto-reverse cassette head unit in 1977, to today's iGadgets and pocket Droids, Autotek delivers solid musical bass, powerful efficient amplifiers and "band on the hood" realistic speakers. We love our cars and our music, and we love showing off as much as you do!

During its 30 years, Autotek has become one of the most respected brand names in the business with unique amplifier designs and innovative low-profile, multi-axial component speaker designs. The success of Autotek is evident through the brand loyalty it enjoys from its enthusiastic customer base and growing network of world class project vehicles; from tuners and hot rods, to donks, bombers, and restos! While our tastes in music are as varied as our tastes in rides, when it comes to being out with our "show-off" friends we all want to...

**Tread
LOUDLY!**

TABLE OF CONTENTS:

AXL AMPLIFIERS Pages 4-5

AXL Amplifiers are sleek, black, and can disappear into any installation, whether you're in a "show off" type of car club or more of a "stealth" install. Only the slight illumination will tip off those onlookers that you are hiding more Torque than might be suspected.

STREET MACHINE AMPLIFIERS Pages 6-7

Check out the new Street Machine amplifiers; sleek and full of power just like a good motor should be. The illuminated VU meters are a throwback to the world of analog, but don't be fooled, the Street Machine is packed with digital horsepower!

MEAN MACHINE AMPLIFIERS Pages 8-9

Made to Tread LOUDLY! The Mean Machine offers the advanced Pro Design Equalization and the power of Pro-Fi™ MOSFETS and a Heat De-Generative Aluminum extrusion. Mean Machine offers 6 amplifiers from stereo and four channel plus D-Class models.

SPEAKERS Pages 10-11

You will hear us talking about putting "THE BAND ON THE HOOD" regarding speakers, because frankly that is the goal. Check out all the ATX speakers, made to fit in the original speaker locations or any other spot your car has. Enjoy getting the best sound out in front of you... like the BAND IS ON THE HOOD. Also, Pro Speakers are listed here for full range drivers with huge power.

SUBWOOFERS Pages 12-13

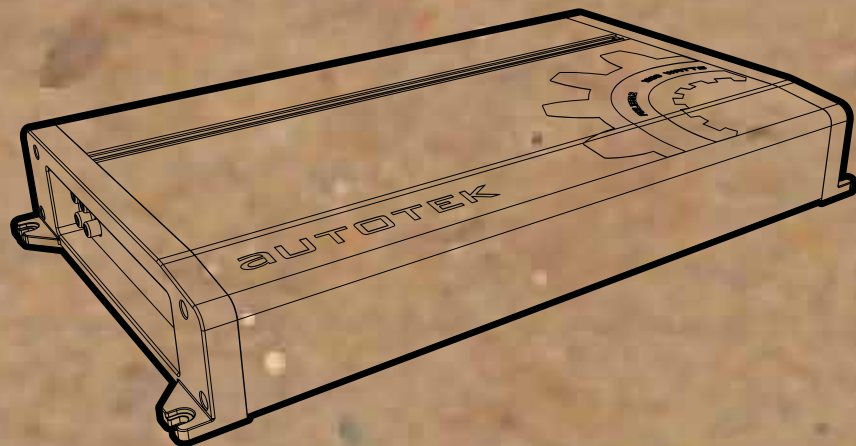
"I only like Torque. I'm not into Horsepower really..." Can you imagine such an insane comment? Great sounding music requires a balance of power and equalization. The AXL and ATW lines of woofers are designed to be perfect additions to any system. One woofer is a must in any system, 2 woofers are great and 4 woofers if you are turning heads in and outside the car!

SIGNAL PROCESSING/MAXXLINK Pages 14-15

Everything needed to finish and fine tune the installation of an Autotek system. In dash EQ/pre amps, electronic crossovers and bass enhancement devices to MAXXLINK's full line of signal and power cables, sound deadening HYPERmat, distribution components and everything in between.

AXL AMPLIFIERS

Autotek has been SHOWING OFF FOR 30 YEARS! With the AXL series of amplifiers, everyone can own a great system that powers out every kind of musical style. When solid performance and reliability are vital for your vehicle, the AXL amplifiers are the perfect choice. For those cars that demand show-off quality, the custom illumination and gear graphic will help your installation stand apart and just a bit closer to the trophy stand.



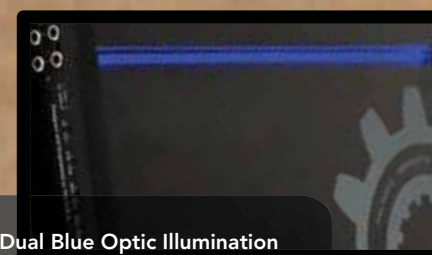
AXL amplifiers are SEPP (Single Ended Push-Pull) A/B Class designs with 2- and 4-channel bridgeable models. The AXL MOSFET PWM (Pulse Width Modulated) power supply offers instant MAXX power output for 1-Ohm capable AXL2550.1, the 2-Ohm capable AXL1550.1 A/B class mono block amps and 2-Ohm stereo or 4-Ohm bridge capable A/B class 2- and 4-channel amps. The 4-channel AXL amplifiers can configure into 3-channel R&L, and sub mode. All amps in the AXL series feature rugged MOSFET audio outputs which lower the amplifier's need for massive amounts of battery amperage. Key features include a protection system with an LED indicator to detect and warn against current amperage overload, short circuits, thermal overload and DC Offset.

Additionally, the preamp level RCA inputs and daisy-chain line outputs permit adding amplifiers to the car audio system without using costly and noise-ridden Y-connectors. Remember, when any Autotek amplifier is properly installed with MAXXLINK installation accessories the amplifier warranty can be extended, making your system nearly bullet proof.



Amplifier Features

- New Rugged Heat Sink Design
- Military Grade PCB Design
- SEPP A/B Analog Class
- Mono Block 4/2 & 4/2/1 Ohm Stable
- Multi Channel Configurable 4/3/2/1
- PWM Power Supply
- Fully Adjustable 12dB Crossovers
- Input Sensitivity From .2 to 6 V
- All Models Feature Unbalanced Low Level RCA Inputs
- Multi-Channel Models Feature High Level Inputs
- For OEM Integration
- Bass Remote Included AXL3050.2 and both Mono Models
- Adjustable High Pass, Low Pass, Subsonic Filter and Bass EQ



Dual Blue Optic Illumination
AXL custom gear graphics



Full adjustable Pro-Design Crossover
Bass Thrust-Variable Bass Equalization



Spade style for secure connections
and increased electrical conductivity

SPECS

Model	AXL1050.2	AXL1650.2	AXL3050.2	AXL1050.4	AXL1450.4	AXL4050.4	AXL1550.1	AXL2550.1
1-Ohm	n/a	n/a	n/a	n/a	n/a	n/a	n/a	1 x 2500
2-Ohms	2 x 500	2 x 800	2 x 1500	4 x 250	4 x 350	4 x 1000	1 x 1500	1 x 1250
4-Ohms	2 x 250	2 x 400	2 x 750	4 x 125	4 x 175	4 x 500	1 x 750	1 x 625
Mono Bridged @ 4-Ohms	1 x 1000	1 x 1600	1 x 3000	2 x 500	2 x 700	2 x 2000	N/A	N/A
Dimensions L x W x H (inches)	12.01 x 9.06 x 2.32	14.76 x 9.06 x 2.32	17.13 x 9.06 x 2.32	11.22 x 9.06 x 2.32	12.4 x 9.06 x 2.32	19.88 x 9.06 x 2.32	17.13 x 9.06 x 2.32	17.91 x 9.06 x 2.32



MAXXLINK™

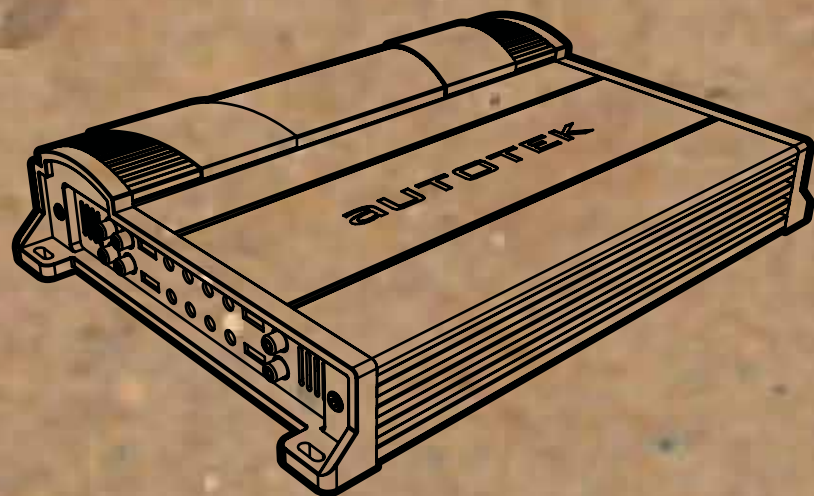
Maximize performance and Maximize warranty with MAXXLINK installation accessories. With V3 and V2 amplifier kits all Autotek amplifier warranties can be extended by 12 months or 6 months.

V3 Amp kits - 12 month warranty
V2 Amp kits - 6 month warranty



STREET MACHINE AMPLIFIERS

Retro, Old School, Throwback: all terms that pay a tribute to the past. The Street Machine nails down the retro look of blue illuminated VU meters and a brushed aluminum finish. Some see old school automotive, some see a throwback to audio products of the 60's and 70's. Whichever you see, it all comes together in the Street Machine!



Street Machine amplifiers are designed to add great sound to any vehicle and to play any style of music. Street Machine amps deliver solid performance and great reliability. Match up a Street Machine amplifier with a MAXXLINK amplifier wiring kit and extend the warranty for free with a V3 or V2 amplifier kit.

Street Machine amplifiers are SEPP (Single Ended Push-Pull) A/B Class designs with 2- and 4-channel bridgeable models. The Street Machine MOSFET PWM (Pulse Width Modulated) power supply offers instant MAXX power output for 1-Ohm capable D-Class mono block amps and 2-Ohm stereo or 4-Ohm bridged capable A/B class 2- and 4-channel amps. The 4-channel Street Machine amplifiers can configure into 3-channel R&L, and sub mode. All amps in the Street Machine series feature rugged MOSFET audio outputs which lower the amplifier's need for massive amounts of battery amperage. Key features include a protection system with LED indicators to detect and warn against current amperage overload, short circuits, thermal overload and DC Offset.

Additionally, the preamp level RCA inputs and daisy-chain line outputs permit adding amplifiers to the car audio system without using costly and noise-ridden Y-connectors.



SM
STREET MACHINE Bill's - Camaro



Amplifier Features

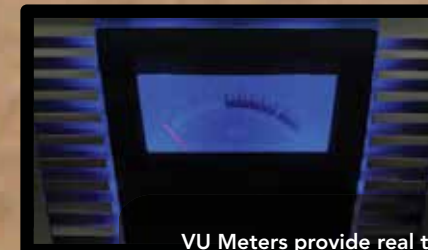
- Brushed Aluminum Heat Sink Design
- Illuminated Power VU Meter
- Military Grade PCB Design
- SEPP A/B Analog Class Multi-Channel Models
- Multi Channel Configurable 4/3/2 Ohms
- D-Class Mono Models
- 4/2/1 Ohm Stable Mono Blocks
- PWM Power Supply
- Fully Adjustable 12dB Crossovers
- Input Sensitivity From .2 to 5V on Multi-Channel Models and .2 to 6V on Mono Models
- Multi-Channel Models Feature High-Level Inputs for OEM Integration
- All Models Feature Low Level RCA Inputs
- Bass Remote Included with All Mono Models
- Adjustable High Pass, Low Pass, Subsonic Filter and Bass EQ



Molded and Angled Terminals for rugged and user friendly installation



Variable Pro-Design Crossovers Bass Thrust



VU Meters provide real time performance indication

SPECS

Model	SM1600.2	SM1400.4	SM3200.1	SM4800.1	SM6000.1
1-Ohm	n/a	n/a	1 x 3200	1 x 4800	1 x 6000
2-Ohms	2 x 800	4 x 350	1 x 1600	1 x 2400	1 x 3000
4-Ohms	2 x 400	4 x 175	1 x 800	1 x 1200	1 x 1500
Mono Bridged @ 4-Ohms	1 x 1600	2 x 700	n/a	n/a	n/a
Dimensions L x W x H (inches)	9.84 x 9.37 x 2.48	11.02 x 9.37 x 2.48	11.81 x 9.37 x 2.48	12.6 x 9.37 x 2.48	14.17 x 9.37 x 2.48



MAXXLINK

Maximize performance and Maximize warranty with MAXXLINK installation accessories. With V3 and V2 amplifier kits all Autotek amplifier warranties can be extended by 12 months or 6 months.

V3 Amp kits - 12 month warranty
V2 Amp kits - 6 month warranty



MEAN MACHINE AMPLIFIERS

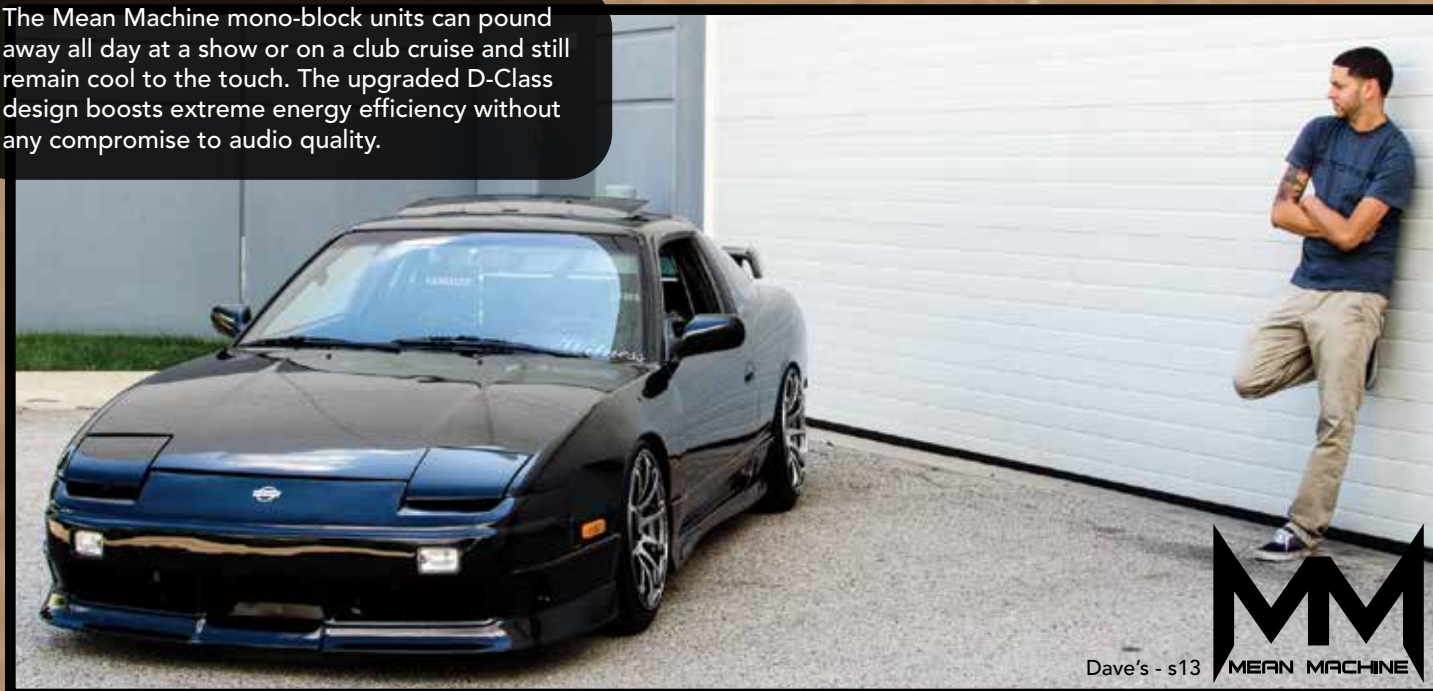
It is hard to fathom that a car's battery and alternator, which are the power source so essential to a great musical system, could also ruin your car audio system. The noises from these electrical necessities combined with an inefficient amplifier are system killers. To solve these issues, Autotek developed the Twin Coil Isolation Design (TCID) to greatly improve noise isolation for its Mean Machine high-power amplifiers. Combine TCID with Autotek's high performance MOSFET output devices for superior sonic accuracy and the result is superior efficiency allowing more than 85% of incoming power to pass right through to the speakers! With all this effort, the sound and reliability produced will be easy to comprehend.

Autotek amplifiers are all business; the MUSIC business. Furthering the pursuit of high power music, the low distortion, low-noise electronic crossovers direct just the right amount of critical midrange and high frequency information to the speakers. This same crossover also controls the most critical low frequencies sent to larger speakers suited for bass and sub-bass audio reproduction. To complete the network feature, the advanced Band-Pass crossover skillfully positions a slice of sound directly into the middle of the audio spectrum for mid-bass drivers or midrange speakers.

The Mean Machine mono-block units can pound away all day at a show or on a club cruise and still remain cool to the touch. The upgraded D-Class design boosts extreme energy efficiency without any compromise to audio quality.

As an added feature, Mean Machine D-Class amps include a bass remote with a power-on and protect mode indicator. When properly installed with MAXXLINK installation accessories, the Autotek amplifier warranty can be extended, making your system nearly bullet proof.

The Mean Machine mono-block units can pound away all day at a show or on a club cruise and still remain cool to the touch. The upgraded D-Class design boosts extreme energy efficiency without any compromise to audio quality.



Dave's - s13 MEAN MACHINE



Amplifier Features

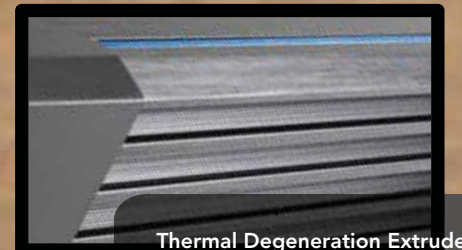
- Pro-Fi™ MOSFET's
- Auto-Step PWM MOSFET Power Supply
- ROAD WORTHY TCID (Twin Coil Isolation Design)
- Fully Adjustable Pro-Design Crossovers
- Line Output for Amplifier Daisy Chaining
- Blue Opti-Surround Illumination
- Heat De-Generative Extrusion
- Bass Remote with Power & Protect Indicator
- Built-In System Diagnostics
- Bass Thrust - Variable Bass Equalization
- 24dB Subsonic Filter
- Multiple High-Speed MOSFET Output Devices
- Maxi-Fused



Fully adjustable Pro Design Crossover
Bass Thrust Variable Bass Equalization



Blue Opti-Surround Illumination



Thermal Degeneration Extruded
Aluminum heat sink

SPECS

Model	M1600.2	M1000.4	M1400.4	M2000.4	M2500.1D	M4000.1D
1-Ohm	n/a	n/a	n/a	n/a	1 x 2500	1 x 4000
2-Ohms	2 x 800	4 x 250	4 x 350	4 x 500	1 x 1250	1 x 2000
4-Ohms	2 x 400	4 x 125	4 x 175	4 x 250	1 x 625	1 x 1000
Mono Bridged @ 4-Ohms	1 x 1600	2 x 500	2 x 700	2 x 1000	n/a	n/a
Dimensions L x W x H (inches)	11.30 x 9.04 x 2.48	12.09 x 9.04 x 2.48	13.66 x 9.04 x 2.48	16.42 x 9.04 x 2.48	13.66 x 9.04 x 2.48	14.84 x 9.04 x 2.48



MAXXLINK™

Maximize performance and Maximize warranty with MAXXLINK installation accessories. With V3 and V2 amplifier kits all Autotek amplifier warranties can be extended by 12 months or 6 months.

V3 Amp kits - 12 month warranty
V2 Amp kits - 6 month warranty



ATX SPEAKERS

You will hear us talking about putting "THE BAND ON THE HOOD" regarding speakers, because frankly that is the goal. You will see many DIY installers put their biggest and best speakers on the back deck, not because it sounds best, but because that is where they fit. No one goes to see a band and sits backwards to the stage right? Check out ATX Speakers with an Autotek amplifier and get THE BAND ON THE HOOD sound. It will make sitting at red lights, much more enjoyable.

ATX series speakers are available in the most sought-after sizes to fit into factory speaker locations with little or no modification. They are perfect for that classic roadster getting the full restoration, where the modern speaker system needs to remain unseen. They were designed for uncomplicated, easy installation with features normally found in higher end units. Technology abounds in Autotek's full-range and component speakers! Look closely for durable moisture-resistant foam speaker surrounds, bass enhancing polypropylene cones, and super output neo-Mylar soft dome tweeters. ATX speakers will not bust the bank either which means great sound at a great price. After all, you still need to spend cash on engine, suspension, paint, and of course, fuzzy dice.

Speakers Features

- Impact Resistant Tweeter Elements
- Neo-Mylar Soft Dome Tweeter
- Installation Hardware Included
- Polypropylene Cones
- Spade Style Speaker Terminals
- UV Resistant Rubber Surround
- Treated Pressed Paper Cone
- High Mid-Bass Impact
- Anti-Resonant Stamped Steel Frame
- Wide Nominal Power Range



Foam surround
Polypropylene cone



Yellow Poly Cotton Spider
Stamp Steel Basket



Mylar Dome Tweeter
In-Line crossover for 6.5" components

SPECS

Model	ATX35CX	ATX4CX	ATX46CX	ATX5.25CX	ATX5768CX	ATX6.5CX	ATX693T	ATX6.2C
Size / Type	3.5" Coax	4" Coax	4 x 6" Coax	5.25" Coax	5 x 7" Coax	6.5" Coax	6 x 9" 3-Way	6.5" Comp
Power Rating	30	35	50	50	50	60	70	60
Peak Power	125	150	200	200	200	250	350	300
Impedance	4-Ohm	4-Ohm	4-Ohm	4-Ohm	4-Ohm	4-Ohm	4-Ohm	4-Ohm
Sensitivity	85dB	85dB	85dB	85dB	86dB	86dB	88dB	86dB
Frequency Response	110-20000Hz	100-20000Hz	90-20000Hz	80-20000Hz	70-20000Hz	60-20000Hz	60-20000Hz	60-20000Hz
Cut-Out Ø	3.41"	4.01"	3.9" x 5.6"	4.48"	4.95" x 7.06"	5.67"	5.98" x 8.64"	5.67"
Chassis depth from flange	1.56"	1.96"	1.98"	2"	2.07"	2.1"	3.1"	2.1"

Pro Audio Full Range High Output Speaker Features

- Three Models
- Sold As Singles
- 1.5" Voice Coil
- Single 4-Ohm Voice Coil
- Spade Terminals
- Stamp Steel Frame
- Treated Pressed Paper Cone
- Cloth 'W' Surround
- BLACK ANODIZED Phase Plug
- Poly Cotton Spider



Black Anodized Phase Plug
Treated Pressed Paper Cone



Stamp Steel Basket



Yellow Poly Cotton Spider

SPECS

Model	M6.5-4	M8-4	M10-4
Size / Type	6.5" Full Range	8" Full Range	10" Full Range
Power Rating	100	150	200
Peak Power	200	300	400
Impedance	4-Ohm	4-Ohm	4-Ohm
Sensitivity	94.7dB	95.6dB	96.1dB
Frequency Response	100-13000Hz	100-10000Hz	100-8000Hz
Cut-Out Ø	5.75"	7.17"	9.09"
Chassis depth from flange	3.06"	3.65"	4.33"

MEAN MACHINE PRO SPEAKERS

Sometimes when we Tread LOUDLY in our hot rods, monster trucks or SPL machines our normal midrange speakers and tweeter cannot be heard. Whether it is the roar of the engine or skull crushing bass bawling out the music, Autotek has the solution. The Mean Machine PRO speaker series has been designed to reproduce midrange to high frequencies at the loudest and cleanest levels possible!

AXL SUBWOOFER

"I only like Torque. I'm not into Horsepower really..."

Can you imagine such an insane comment? Well, it's the same for music. Anyone that says, "I don't really like bass.." is saying either A) they are tone-deaf from standing too close to exhaust systems or B) thinks that bass only means "license plate rattling". A subwoofer adds Power and Equalization balance to any system. Regardless of what type of music is allowed to play in your car, every system needs a subwoofer.

Subwoofer Features:

- PVC Gasket
Seals the woofer to the enclosure
- THERMOPoly Dust cap
Looks great and keeps out the dust
- Rigid Polypropylene Cone
The Poly cone is light weight, ridged, strong and delivers great bass with no drying or fading experienced with paper cone woofers.
- Black Foam Surround
Also UV resistant and keeps the cone motor in balance.
- Spider Blue
Part of the bass motor suspension, The AXL spider is a natural textile, adhesive reinforced accordion blue spider which adds strength while delivering fast bass energy.
- 1.5" Voice Coil
Voice coil is wound on a triple dipped aluminum former ideal for power and dissipating heat.
- Steel TREAD Frame
Ultra Rigid Cold Rolled Stamped Steel Tread Basket for overall strength
- Vented Motor
Single vented magnet motor de Ultra Rigid Cold Rolled Stamped Steel Tread Frame

Model	AXL12D4
Size	12"
Power handling	RMS 300
	MAXX 600
Voice Coil Diameter	1.5"
Impedance	Dual 4-Ohm
Cut-Out Ø	10.2"
Chassis depth from flange	4.85"



Black Foam Surround



Ultra Rigid Cold Rolled
Stamped Steel Tread Basket



THERMOPoly Dust cap

Model	ATW12D4
Size	12"
Power handling	RMS 350
	MAXX 700
Voice Coil Diameter	2"
Impedance	Dual 4-Ohm
Cut-Out Ø	10.91"
Chassis depth from flange	4.84

Subwoofer Features:

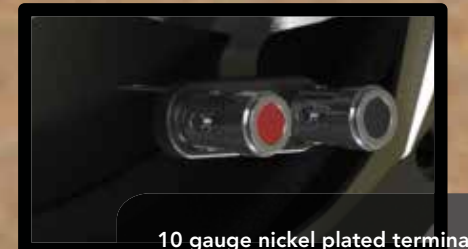
- PVC Gasket
Seals the woofer to the enclosure with a tire side wall look
- THERMOPoly Dust cap
Looks great and keeps out the dust
- Rigid Polypropylene Cone
Similar to the AXL but reinforced with a brushed texture to add additional strength to the ATW.
- Black Foam Surround
Also UV resistant and keeps the cone motor in balance.
- Spider Blue
Part of the bass motor suspension, The ATW spider is a natural textile, adhesive reinforced accordion blue spider which adds strength while delivering fast bass energy.
- 2.0" Voice Coil
Like AXL the ATW is a triple dipped aluminum however, the larger voice coil on the ATW allows for more heat dissipation which delivers more power handling.
- Nickel Plated Terminals
10 gauge nickel plated terminals do not corrode and handle the best MAXXLINK speaker wire.
- Steel TREAD Frame
Ultra Rigid Cold Rolled Stamped Steel Tread Frame for overall strength
- Vented Motor
Double stacked vented magnet motor delivers big power handling, finished with the Tread LOUDLY! rubber cap.



Black Foam Surround
Rigid Polypropylene Cone



Ultra Rigid Cold Rolled
Stamped Steel Tread Basket



10 gauge nickel plated terminals

ATW SUBWOOFER

Big motor, more power. The philosophy of engines and the philosophy of the Autotek Woofer or ATW are the same. A bigger motor - the magnet and voice coil former, means more bass power can be pushed through from bigger amplifiers. Additional bass engine power comes from the reinforced cone and rubber surround.

ACCESSORIES

Tuning the audio system can be as critical as tuning the fuel map in an ECU when trying to squeeze more power from the motor. Autotek offers two different options; the 7007 which can be installed up front for quick control of master and sub volume along with equalization for real time tuning that is critical if your system will be playing many styles and genres of music. The ATK2/3X crossover is designed for systems with more than one amplifier that requires additional crossover control that can be accomplished with the amplifiers on board crossovers.

Model 7007 4-Band EQ / 9-Volt Line-Driver Multiple-Source Signal Processor

Features:

- 4-Band EQ and Line Driver
- Dual Inputs with Level Matching
- Perfect for Add-On MP3 Players
- DIN, ISO Mount EQ Chassis
- Selectable Blue or Red Illumination
- Built-In 9-Volt Line-Driver
- Front to Rear Dual-Amp Fader
- High-Pass F/ R Crossover / 12dB Slope
- Mid-Bass 2.2 kHz Mid-Range, 12 kHz Treble
- Master Volume & Subwoofer Volume Control
- EQ Controls with 12dB of Boost or Cut at 45 Hz Sub-Bass, 120 Hz
- Selectable Subwoofer Output: 50Hz / 80Hz / 120 Hz @ 18dB Slope
- For Mono or Stereo Subwoofer Setups



ATK2/3X 2-Way / 3-Way Active Crossover with Remote Bass Control

Features:

- For 2-Ch or 4-Ch Inputs
- Sub-In for Receiver's with Sub-Outputs
- Bass Remote Offers 12dB Bass Boost
- Maximum Output: 8.5-Volts RMS
- For Mono or Stereo Woofers
- 180° Phase-Shift Switch
- 45Hz Bass Boost With Quasi-Parametric EQ
- Level Adjustments for Front, Rear & Sub Ch's
- 2nd Order Butterworth Hi-Pass: Front & Rear Ch's
- Use Multiple ATK2/3X via Full-Range Cascade Output



MBC-1



Dash Mount Remote Control:

- The MBC1 comes with a Dash Mountable Remote Control

Bass Maximizer Indicator:

- Shows you the status of when the unit is injecting deep bass signal

Bass Output Control:

- Allows the MBC1 to maximize the bass output of any autosound audio system while restraining destructive bursts.

The Maxxsonics MBC1 contains a Bass Driver circuit that accurately recreates and injects Low Frequency information back into the signal path of any MB Quart amplifier. What this means sonically is that the MBC1 will deliver more deep bass, that bass you feel in your chest, to the worst recordings in your collection. With the included dash remote, you can dial up or down the amount of the circuit being delivered to the amplifier.



Your new Autotek system is only as strong as its weakest link. That's why Autotek recommends MAXXLINK installation accessories. MAXXLINK accessories are specifically engineered for Autotek amps and speakers. Using MAXXLINK accessories will ensure optimum performance from your system. We're so confident that we'll even increase your Autotek amplifier warranty when hooked up to a qualifying MAXXLINK amplifier installation kit.

From battery to bumper, MAXXLINK has you covered with a full line of accessories including...

Amplifier Installation Kits: Three levels of product that cover nearly every application and price point and all are BC-5W2 marine compliant

RCA Signal Cables: Three levels of RCA cables that offer class leading noise isolation and cutting-edge construction.

Power & Ground Distribution Products: From battery terminals, to fuse holders and distribution blocks, MAXXLINK utilizes only pure non-recycled brass to let the power flow!

Line Output Converters: Three levels of line output converters with two to six channels of input and output that cover nearly any input power range or application imaginable.

HYPERcharge Capacitors: Every amplifier can use more power and MAXXLINK gives you six different choices that cover applications from 1,000 to 10,000 watts!

HYPERmat Sound Deadener: MAXXLINK's install-ready flat-packed sound deadener uses a proprietary butyl based compound fused to an aluminum heat shield. Check out the car kit for a pre-cut complete car solution.

Bulk Spooled Wire: Based on the same wire found in MAXXLINK amp kits, bulk wire is available in a variety of lengths and gauges to cover nearly any application.

