

BELMOR[®]

BECAUSE YOU DRIVE **HEAVY DUTY.**



2017 HEAVY TRUCK
ACCESSORIES PRODUCT CATALOG
AMERICAN DESIGN, ENGINEERING & MANUFACTURING

BELMOR[®]

BECAUSE YOU DRIVE **HEAVY DUTY.**

A leading provider of heavy and medium duty truck accessories, supplying major original equipment manufacturers and dealers with high quality class 4 - 8 accessories since 1921.

Belmor's extensive category coverage includes Aeroshield II[®] and other hood shields, Ventvisor[®] side window deflectors, bug screens, winterfronts, storage boxes, tank covers, and cargo management. The products are designed to not only provide comfort to the driver, but also add protection and storage to the trucks.

BELMOR, a division of Lund International[®]

AMP
RESEARCH
Innovation in Motion

AVS
Ahead of the Curve.

BELMOR
BECAUSE YOU DRIVE **HEAVY DUTY.**

BUSHWACKER

LUND
Premium Style. Lasting Performance.

RAMPAGE
PRODUCTS

ROLL-N-LOCK[®]

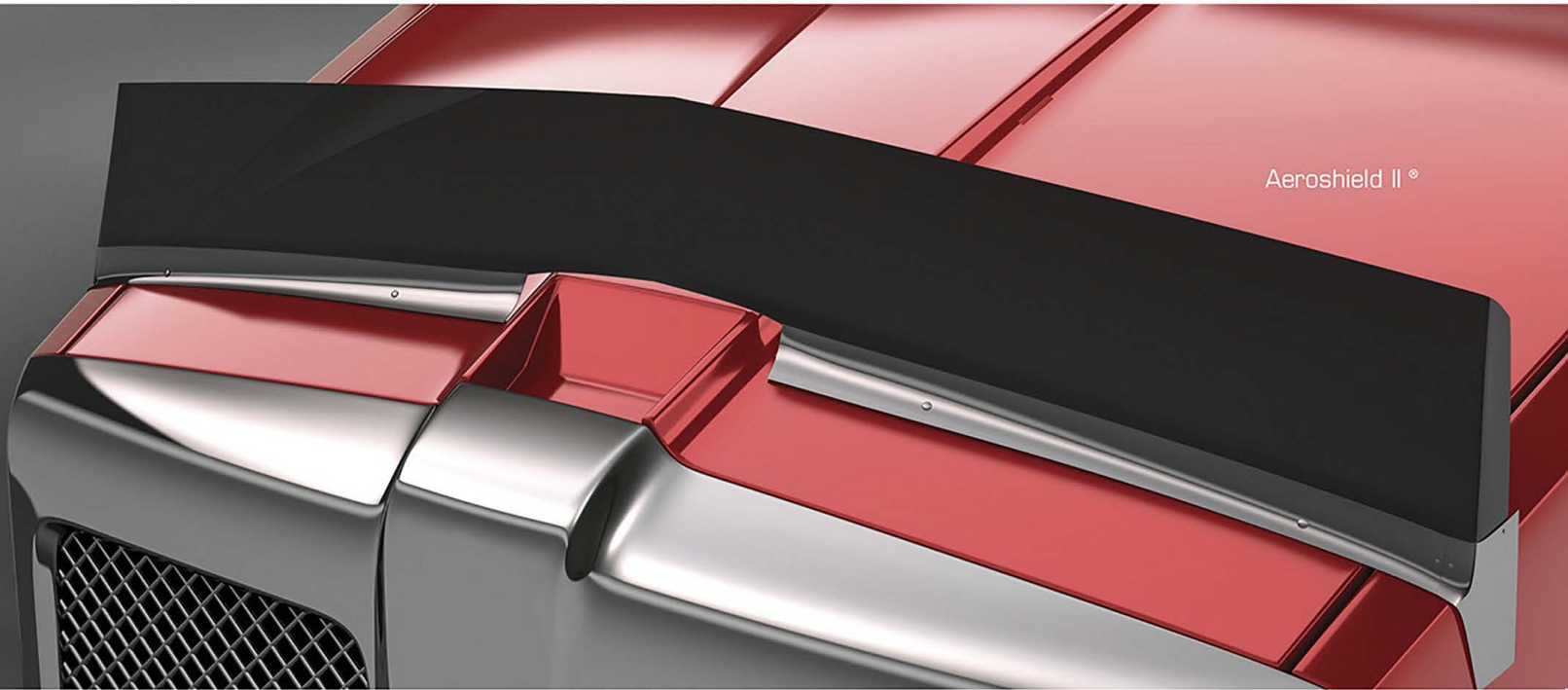
STAMPEDE
AUTOMOTIVE ACCESSORIES

TONNO PRO

Table of Contents

Hood Shields	2 - 3
Ventvisor [®] / Ventshade [®]	4
Bug Screen	5
Winterfront	6
Rock Guards	7
Tank Covers	7
Storage Boxes	8 - 9
Cargo Logic [®] / Backup Camera	10





HOOD SHIELDS

BELMOR® offers a wide variety of hood shields including our Aeroshield II®. Each shield style helps protect the truck from costly down time and repairs. Designed to deflect bugs, rocks, dirt, snow and other road debris away from the drivers' line of vision, Belmor hood shields protect the windshield and the hood as well.

Engineered with precision, state of the art equipment, Belmor hood shields offer a custom and secure fit that protects while enhancing the look of the truck. All products are made in North America and backed by a Limited Lifetime Warranty.

Aeroshield II®



Aeroshield II is the most popular shield on the road today and is built to last.

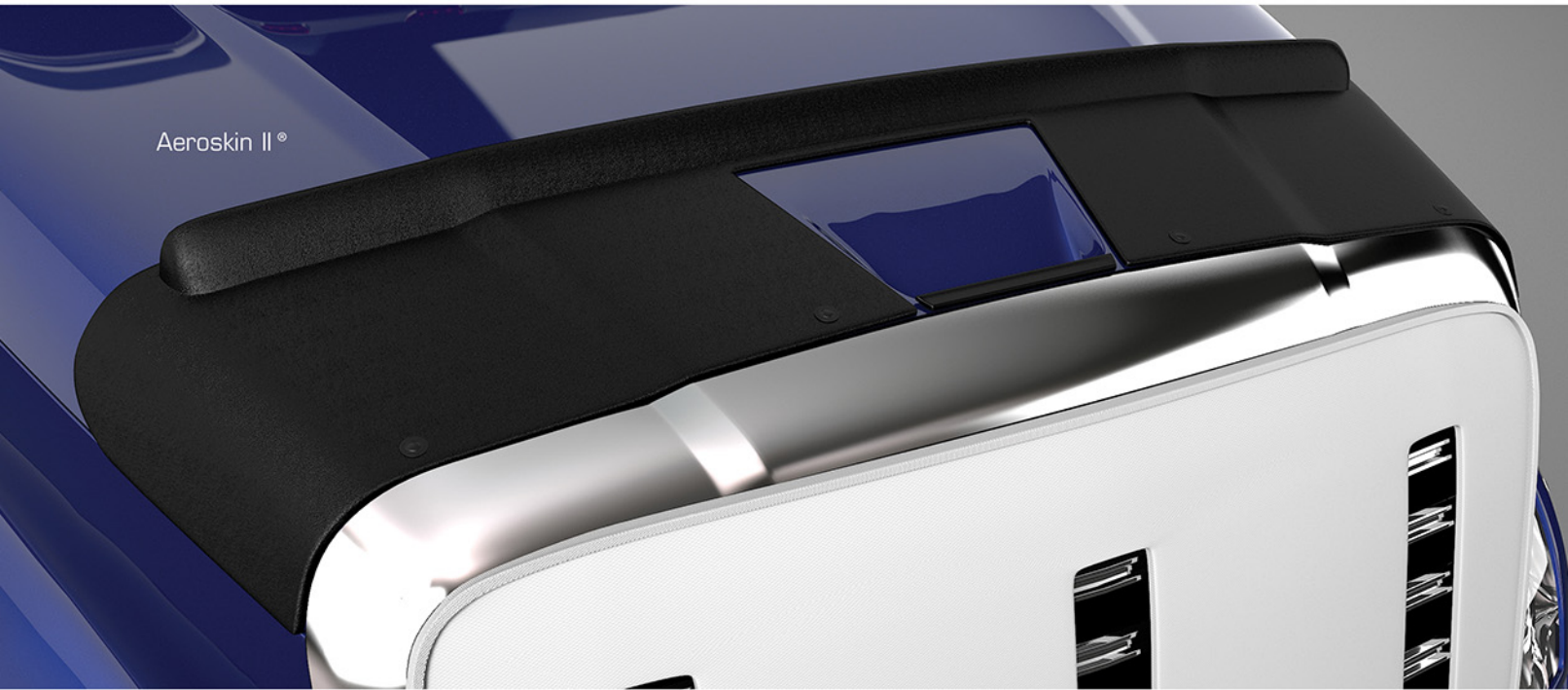
- Unique design lends itself to all makes and models
- Polycarbonate shield is permanently set into aluminum extrusion
- Carefully crafted, polished aluminum end caps, compliments the shields appearance

Aeroshield Stainless



Aeroshield Stainless offers a custom fit and a bright, mirror reflective appearance to the front of the truck.

- Sleek, wrap-around design
- Made from premium 18ga, 304 stainless steel with an X10 mirror finish



Aeroskin II®

Aeroskin II, popular with light truck drivers all across America, this low-profile hood shield is now available for heavy trucks. Precision-engineered hood protection that offers the custom look drivers want while providing hood and windshield protection from snow, bugs, and road debris.

- Hugs the contours of the trucks' hood while providing wind deflection for the windshield
- Made from ultra-tough, UV-stable Dura-Flex® 2000 TPO material that won't fade or chalk
- Installs easily using automotive-grade adhesive and well-nuts

Next Gen Aeroshield was designed for aerodynamic trucks and is the choice for fleets.

- Aerodynamic design follows the look of the truck
- Made of 3/16" acrylic with a smoked or chrome finish
- Bright polished aluminum wrap-around end caps for a custom fit

Aeroshield Wave gives the truck the Original Equipment look.

- Aerodynamic wave design
- Made of 3/16" acrylic
- Easy installation and low maintenance

Aeroshield 1.5 has the classic look with an economical price.

- Straight-up design set in a polished aluminum channel
- Made of durable, heavy-duty polycarbonate shield
- Ideal for enhancing the look of classic trucks

Mustache Shield is designed to take the classic look to the next level.

- Straight-up design for the classic look
- Stylish chrome mounting brackets
- Extremely durable shield made of 3/16" acrylic with a smoked finish

Next Gen



Wave



Aeroshield 1.5



Mustache



LIMITED LIFETIME WARRANTY



VENTVISOR® Side-Window Deflectors

BELMOR® Ventvisor® combines style, functionality and protection. Its unique design allows fresh air to naturally circulate through open windows while keeping rain and snow out. By circulating stale air out and fresh air in, it helps to keep the driver comfortable and alert. Ventvisor® Side-Window Deflectors fully extend down the window pillar helping reduce or eliminate the water shed from pooling on the side window causing difficulties in side mirror vision. The Ventvisor® is engineered, designed and manufactured in the USA and backed by a Limited Lifetime Warranty.



OUTSIDE MOUNT



IN-CHANNEL MOUNT

Let's fresh air in, keeps rain and other elements out!

- Helps to keep the driver comfortable and alert
- Aids in the deflection of water away from the drivers line of vision to side mirrors
- Customized to fit most heavy and medium-duty truck makes and models
- Available in smoke & chrome finishes, Outside mount or In-Channel mount

VENTSHADES®

BELMOR Ventshades are designed to be functional while enhancing the look of that classic style truck. Ventshades allow fresh air to circulate into the cab of the truck while keeping the elements out making the driver comfortable and more alert. Ventshades are engineered, designed and manufactured in the USA and backed by a Limited Lifetime Warranty.



Let's fresh air in, keeps rain and other elements out!

- Helps to keep the driver comfortable and alert
- Customized to fit most classic truck makes and models
- Stainless steel bright finish

No-Drill
Bug Screen

BUG SCREENS

BELMOR Bug Screens provide the first line of protection for grilles and radiators. Bug screens, also referred to as external bug screens, not only help to keep your grille clean but they protect your radiator and other key engine and cooling components, from bugs and other small road debris reducing downtime and helping maintain optimal radiator performance. Made with heavy-duty mesh screen that is bound with reinforced vinyl and designed to original equipment specifications, Belmor bug screens are mounted on the exterior of the grille using the same mounting hardware as Belmor winterfronts easily making them interchangeable from season to season. All products are made in North America and backed by a Limited Lifetime Warranty.

Bug Screens

- Protects key engine and cooling components and grilles from bugs, rocks and debris
- Engineered to original-equipment manufactured specifications to ensure proper fit
- Reduces cleaning of grille and chrome
- Reduces down time and helps maintain optimal radiator performance
- Made of heavy-duty mesh screen, bound in reinforced vinyl
- Uses same mounting hardware as Belmor Winterfronts

No-Drill Bug Screens

- No drill installation
- Hardware attaches securely to grille and can easily be removed
- Uniquely designed to each Make and Model
- Engineered to original-equipment manufactured specifications to ensure proper fit
- Protects key engine and cooling components and grilles from bugs, rocks and debris
- Made of heavy-duty mesh screen, bound in reinforced vinyl
- Uses same mounting hardware as BELMOR No-Drill Winterfronts



LIMITED LIFETIME WARRANTY

No-Drill
Winterfront



WINTERFRONTS

BELMOR Winterfronts are engineered and designed with full consideration of Original Equipment Truck Manufacturers and the recommendations provided to the industry by the Technology and Maintenance Council (TMC) guidelines for winterfronts. Belmor winterfronts are designed to reduce and redirect the frigid cold airflow into the grille while still allowing adequate airflow to all areas of the cooling system. Winterfronts should be included as part of your cold weather preparations and removed when the sustainable air temperature is 40° Fahrenheit and above. Made of heavy-duty reinforced vinyl with heat sealed edges to reduce frame rolling, Belmor winterfronts are mounted to the exterior of the grille using the same mounting hardware as Belmor bug screens making them easily interchangeable from season to season. All products are made in North America and backed by a Limited Lifetime Warranty.

Winterfronts

- Helps to maintain optimum engine operating temperatures in extreme cold conditions
- Supports TMC recommended practice
- Engineered to original-equipment manufactured specifications to ensure proper fit
- Made of heavy-duty reinforced vinyl, UV-resistant to protect from fading
- Uses same mounting hardware as Belmor Bug Screens

No-Drill Winterfronts

- No drill installation
- Hardware attaches securely to grille and can easily be removed
- Helps to maintain optimum engine operating temperatures in extreme cold conditions
- Protects radiators and grilles from stones and debris
- Supports TMC recommended practice
- Engineered to original-equipment manufactured specifications to ensure proper fit
- Made of heavy-duty reinforced vinyl, UV-resistant to protect from fading
- Uses same mounting hardware as Belmor No-Drill Bug Screens





ROCK GUARDS

BELMOR rock guards protect radiators from bugs, stones and other small debris reducing downtime and helping maintain optimal radiator performance. Often referred to as an internal bug screen, Belmor rock guards are made with light weight, heavy duty, powder coated aluminum set in black anodized aluminum frame and designed for low maintenance and longevity. All products are made in North America and backed by a Limited Lifetime Warranty.

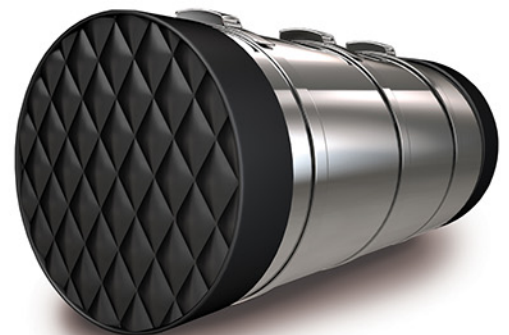
- Protects radiators from bugs, stones, and other small debris
- Reduces downtime and helps maintain optimal radiator performance
- Designed to original equipment specifications to fit most heavy duty truck makes and models
- Made with a lightweight heavy-duty black aluminum for most heavy and medium-duty trucks



TANK COVERS

BELMOR Tank Covers help protect your fuel tanks appearance while adding a distinctive look to your truck with its black quilted pattern. Made from heavy duty, reinforced, leather grain embossed vinyl, this material is engineered to hold up in the harshest elements and is resistant to water, mold mildew, UV, dirt and dust. Tank Covers easily rinse off with water, no special cleaners are needed. All products are made in North America and backed by a Limited Lifetime Warranty.

- Protects fuel tanks from high-speed road debris, stones, snow and dirt
- Made of industrial quality reinforced quilted vinyl
- Two sizes (24.5" and 26") fit the most popular makes and models
- Easily installed for a perfect fit



LIMITED LIFETIME WARRANTY



STORAGE SOLUTIONS

BELMOR Storage Solutions provides safe, lockable storage solutions so you can keep your accessories out of the way, secure and readily available to you when you need them. Built from heavy duty diamond plate aluminum, Belmor Storage Solutions are made to hold up to the harsh conditions of the road. With products like In-Frame storage boxes that are ideal for chains and binders, Commercial Underbody boxes that have unlimited uses, Hand Held Toolbox storage for on the road quick fixes and even Belmor coolers to keep your cold items cold and at your fingertips. Belmor is your source for safe, secure, storage protection.

Commercial In-Frame Boxes

Low-profile storage box that utilizes the space between the trucks frame rails and are ideal for securely storing your chains, binders, etc.

- 4 size and depth combinations for the perfect fit and clearance of lines
- Low-profile, reinforced lid with weather proof gasket to keep dirt and moisture out
- Choice of secure padlock or recessed, stainless steel T-handle



Commercial Underbody Boxes

Fit in almost any spot you have - from as small and tight as 24" all the way up to 5 ft., most anything that's needed on the road and lots of things you wish you had room to take on the road can be stored and securely protected.

- Made from .100" thick bright diamond plate aluminum
- Swing out double doors and 90° single drop down door available
- Heavy duty stainless steel locking recessed T-handles



Underbody Adjustable Shelf Inserts

Horizontally divides the interior of the underbody boxes allowing even more versatility for storage.

- Available for 24", 36" and 48" underbodies
- 3 height adjustments
- Assembles in less than 10 minutes





STORAGE PROTECTION

Hand Held Tool Boxes

Keep the smaller items you use all together and protects these items from getting misplaced or damaged.

- Made of bright, diamond plate aluminum with a heavy duty attached handle
- Features clasps for locking and securing the contents
- 24" and 30" sizes available



Diamond Plate Aluminum Coolers

Designed to keep your food and beverages cold and they are lockable should the cause arise for you to need to protect the contents. The double wall insulated interior and lid are made from aluminum making these a cooler that will last for years.

- .060 bright aluminum diamond plate with heavy duty attached handles
- 48 quart and 20 quart sizes to choose from
- Great for on the road or down time on the weekends





Universal Cargo Logic System

UNIVERSAL CARGO LOGIC®

BELMOR Universal Cargo Logic adds stay-put organization to any place you decide to use them. The heavy duty stain proof looped polyware surface looks like carpet but it is formulated to easily hose off. The molded raised edge contains spills and dirt keeping the area clean and protected. Belmor Universal Cargo Logic kits include the mat, four stay put cargo loks, that work with a hook and loop design keeping your cargo protected, and a Cargo Logic tote for easy loading and unloading of the cargo.

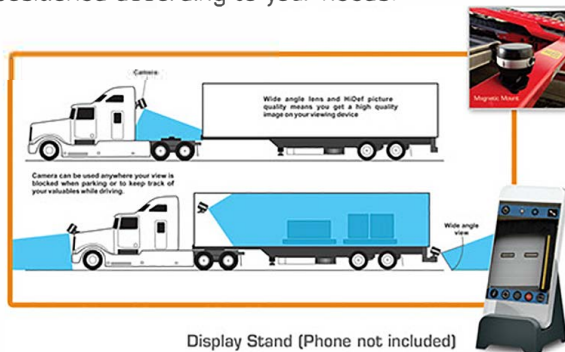
- Raised, molded edge contains spills, dirt and debris
- Charcoal color
- Medium, large and extra-large available
- Kit contains mat, loks and tote (all items also sold separately)



PORTABLE WiFi BACKUP CAMERA

BELMOR Portable WiFi camera creates its own hotspot so it is not using any of your data plan. It can be used inside the truck on the dash as a dash cam or you can attach it to the trailer or truck for a second set of eyes on live feed. The Belmor Portable WiFi camera is so versatile, its uses are endless. Permanently attached to a hi-tension magnetic base, the camera can still articulate and be positioned according to your needs.

- Use with existing smart phones, tablets or pads with a simple app based setup
- Lithium battery (included) holds a strong charge for 4 hours, or the camera can operate while in charging mode too
- Able to record video, take pictures or real time live feed
- Stored videos and pictures are cloud based, no memory is used on the devise the app is installed on



Display Stand (Phone not included)

