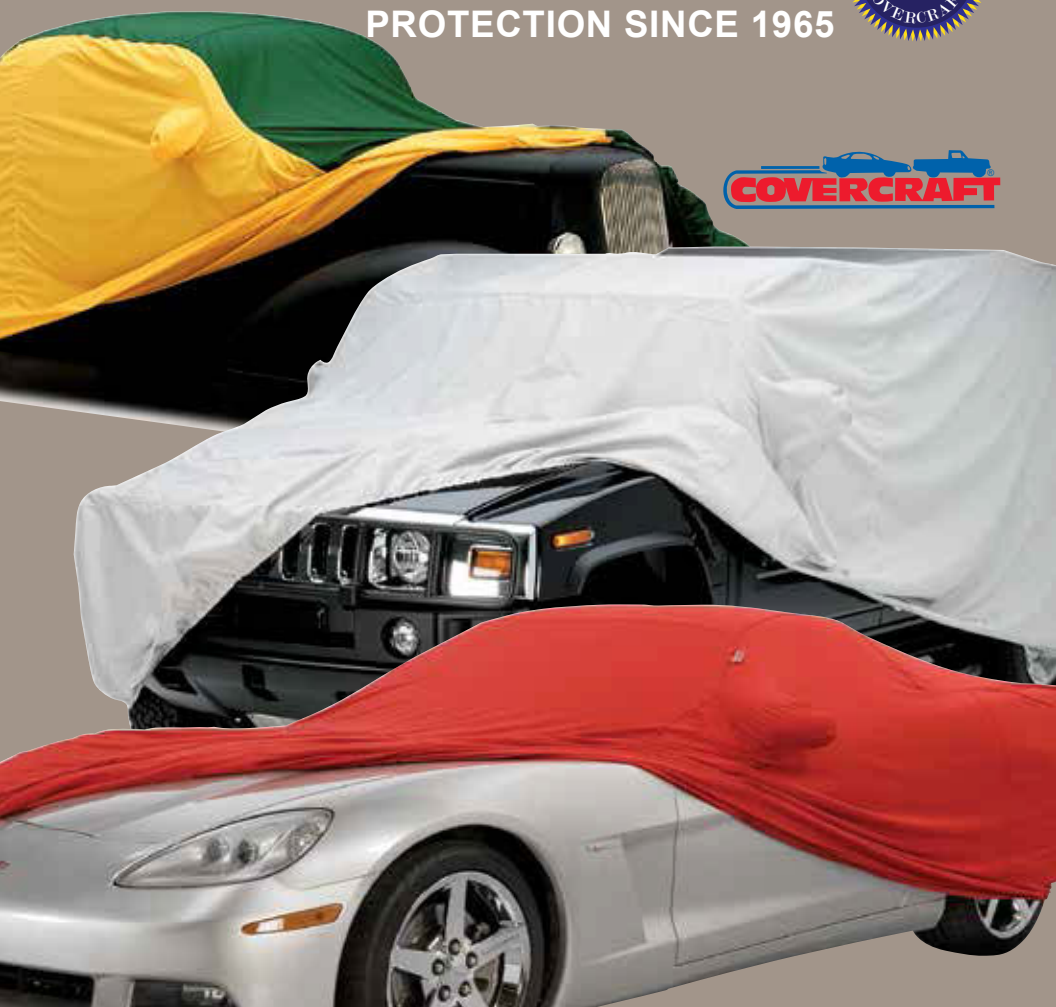


THE LEADER IN Crafted²Fit[®]
PROTECTION SINCE 1965



WORLD'S BEST CUSTOM CAR COVERS[®]
& Accessories



WHAT WE DO

For nearly 50 years Covercraft has manufactured premium quality exterior and interior protection products for automotive enthusiasts, building a reputation for quality, durability and design. Our mission is to continue leading the market, maintaining the highest standards, utilizing the finest materials and remaining on the cutting edge of manufacturing technology --- putting "Covercraftsmanship" into every product we make!

Custom Covers

If it has wheels, Covercraft can cover it!

With over **80,000 patterns**, Covercraft is the world's largest manufacturer of custom covers. If it's not in our database (and we go all the way back to an 1890's Daimler), we'll provide an easy-to-complete custom dimension sheet. We offer the widest assortment of fabrics, selected for your specific needs...



Customs & Classics

Street rods...classic cars...show trucks...street racers...

If it's got wheels, Covercraft can cover it! Our application guide lists only our top 2400 patterns. There are over 80,000 patterns in our digitized cutting library and more are added every day. We also make covers using dimensions supplied on one of our special pattern sheets so, even if the vehicle has been modified, we can still make a cover for it.



Cover Fabrics

- **Block-it® 200** - Provides good, basic protection.
- **Block-it® 380** - Provides better outdoor protection.
- **Evolution® (Technalon®)** - Our most popular all-weather fabric.
- **NOAH®** - High-tech barrier fabric, provides water and dust resistance.
- **Polycotton** - A lightweight, durable blend. Best for inside storage.
- **Tan Flannel** - Super soft natural finish to pamper the vehicle's body.
- **Dustop™** - Softest against fine paint finishes and almost totally dust proof.
- **Ultra'tect®** - Developed from the need for a cover that would retain its color and strength in extended outdoor exposure, while providing a high degree of water resistance and UV protection at a reasonable price.
- **Reflec'tect®** - Easy to handle for installation and removal, this lightweight cover provides good all-season protection.
- **WeatherShield® HP** - The ultimate in all-weather protection. Now available in eight colors and a Heavy Duty version as well.
- **Sunbrella®** - Best for intense sun environments.
- **Form-Fit®** - Indoor covers are body-hugging polyester knit.



- All Covercraft fabrics are breathable, which allows moisture to easily evaporate and reduce heat build-up.
- All covers feature super-strong, double-stitched, overlapped seams.
- We sew solid neoprene sheeting into the hems at the front and rear to help hold the cover in place.
- Reinforced, non-scratch grommets are standard on every cover. (Can be used with supplied tie-down rope or optional vinyl-coated cable and lock.)

OUR FABRICS

	OUTDOOR / INDOOR FABRICS												
	WeatherShield® HD	Sunbrella®	Ultra'tect®	WeatherShield® HP	NOAH® Block-it®	Evolution® Block-it®	Reflec'tect®	Block-it® 380 Series	Block-it® 200 Series	Form-Fit®	Dustop® Block-it®	Tan Flannel	Gray Polycotton
Outdoor Use	Intense Sun	-	-	Best	Best	Better	Good	Good	Good	Fair	Fair	Fair	Fair
Indoor Use	-	-	-	Best	Best	Better	Better	Better	Better	Better	Better	Better	Good
Cost	\$\$\$\$\$	\$\$\$\$\$	\$\$\$\$\$	\$\$\$\$\$	\$\$\$\$\$	\$\$\$	\$	\$	\$	\$\$\$\$\$	\$\$\$\$\$	\$\$\$\$\$	\$
Custom Fabric Code	Dx (3 colors)	Ux (4 colors)	Px (8 colors)	NH	CK/TK (2 colors)	RS	TT	SG	Fx (6 colors)	TS	TF	PD	-
All Weather Protection	-	-	-	Best	Best	Best	Good	Good	Fair	-	-	-	-
Rain	-	-	-	Best	Best	Best	Good	Good	Fair	-	-	-	-
Snow	-	-	-	Best	Best	Best	Good	Good	Fair	-	-	-	-
Acid Rain	-	-	-	Best	Best	Best	Good	Good	Fair	-	-	-	-
Dir/Dust	-	-	-	Best	Best	Best	Good	Good	Fair	-	-	-	-
UV (sun) Damage	-	-	-	Best	Best	Best	Good	Good	Fair	-	-	-	-
Bird Droppings	-	-	-	Best	Best	Best	Good	Good	Fair	-	-	-	-
Tree Sap	-	-	-	Best	Best	Best	Good	Good	Fair	-	-	-	-
Breathability	-	-	-	Good	Good	Good	Good	Good	Best	Best	Good	Best	Best
Heat Insulation	-	-	-	Good	Good	Good	Good	Good	Good	Good	Good	Good	Good
"Soft" Touch	-	-	-	Good	Good	Good	Good	Good	Good	Good	Good	Good	Good
Ding Protection	-	-	-	Good	Good	Good	Good	Good	Good	Good	Good	Good	Good
Ease of Handling in Wind	-	-	-	Good	Good	Good	Good	Good	Good	Good	Good	Good	Good
Mildew/Rot Resistant	-	-	-	Good	Good	Good	Good	Good	Good	Good	Good	Good	Good
Storage Space Required	-	-	-	Good	Good	Good	Good	Good	Good	Good	Good	Good	Good
Wash	-	-	-	Good	Good	Good	Good	Good	Good	Good	Good	Good	Good
Dry	-	-	-	Good	Good	Good	Good	Good	Good	Good	Good	Good	Good
Limited Warranty ²	5 Years	5 Years	4 Years	4 Years	4 Years	4 Years	4 Years	3 Years	3 Years	3 Years	3 Years	3 Years	3 Years

¹ Smaller covers can be washed at home but commercial washers without agitators provide the best cleaning & rinse.
² Warranty is for defects in material, workmanship and against the fabric becoming unserviceable under normal use. We will repair or replace any defective panels after factory inspection. Our goal is to offer the widest range of fabrics to meet the needs of our customers. Use the chart above to help select which custom fabric is best suited for the protection needs of the vehicle. Remember that, by using a cover, you are protecting both the exterior and interior of your vehicle.



All Covers Feature:



Durable overlapped, double needle stitched seams.



Reinforced non-scratch grommets can be used with tie-down rope (supplied) or vinyl-coated cable and lock (option).



Neoprene elastic sewn into the front and rear hems.

HIGH-PERFORMANCE WOVEN FABRICS



The Next Generation of Our Exclusive High-Performance Fabric

High-strength woven polyester (selected because it is naturally moisture and UV resistant) is finished with the worldwide patented EPIC® encapsulation technology.

Developed for outdoor performance clothing, EPIC by Nextec® uses a process which places a mix of proprietary polymers *inside* the fabric to transform ordinary fabric to extra-ordinary!

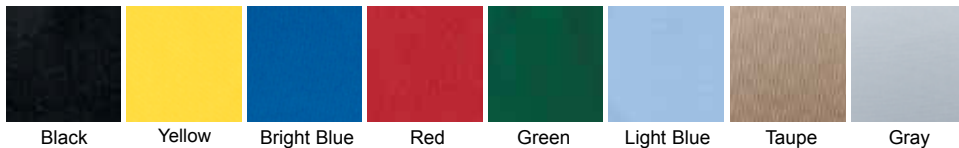
To construct this amazing fabric, durable polyester solution-dye fabric is woven by a Nextec mill partner and prefinishing chemistries are applied to the fabric, prepping it for the encapsulation process. Nextec proprietary equipment then places a viscous (gooey) patented mixture of silicone-based polymers onto the fabric. Energy (heat and pressure) is applied to the polymers, **working them inside the fabric** and wrapping the individual fade-resistant fibers (see illustration). All but the smallest spaces (or "micro holes") are filled.

To finish the process, specially designed ovens cure the polymers to a solid state, and the fabric is ready to become garments, gear, and, in our case, vehicle covers! No laminates, no surface coating...Nextec's encapsulation process delivers the *all-weather protection* you need without sacrificing breathability, packability, or "soft to the paint touch".

WeatherShield is not waterproof, but it will shed most water and help prevent dust, dirt, bird droppings and tree sap from reaching the surface of your vehicle. The breathable properties of the fabric assure that any heat, moisture or condensation under the cover can quickly escape.

WeatherShield®HP Colors

Multi-Color WeatherShield®HP Covers – Now you can also mix and match WeatherShield®HP fabric colors to personalize your custom cover. Specify a DECK color (hood/roof/trunk) and SIDES color (both sides and mirror pockets, if applicable, are the same color). Think of the possibilities! Order fabric code "PX" and specify colors for deck and sides.



Warranty - 4 years



Why are solution-dye fabrics better?



SOLUTION-DYE PROCESS

SOLUTION-DYE PROCESS:

Pigment is added during fiber production. These fibers are spun into yarn resulting in permeated color throughout the fabric, creating consistent, lasting color. (carrot)



CONVENTIONAL PROCESS

CONVENTIONAL DYEING PROCESS: Pigment is applied after the fabric is made. Color is not an integral part of the fabric, making the fabric more prone to fading and difficult to clean. (radish)



WeatherShield®HP and WeatherShield®HD use a superior fade-resistant production process that SAVES 1,000 gallons of water for every 1,000 yards of fabric produced.

HIGH-PERFORMANCE WOVEN FABRICS

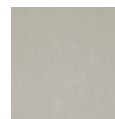


WeatherShield's Key Features and Benefits

- **Dramatic Rain Dispersion** - Fabric sheds water as soon as it hits the cover.
- **Superior Dry Time** - Because the fabric sheds moisture, just shake the cover and it dries in minutes (HD fabric is heavier and requires additional drying time).
- **Breathable** - Allows any heat, moisture or condensation under the cover to easily escape.
- **UV Resistant** - Special additives to the encapsulation formula reduce fabric UV degradation.
- **Superior Paint Finish Protection** - Silicone polymers used in the encapsulation formula help create a silky-smooth finish that's even less abrasive than flannel (HD uses heavier denier thread which is not as smooth).
- **Packs Small** - Cover packs into roughly 1/3 the volume of multi-layer fabric covers (HD covers are bulkier).
- **Easy Care** - Wash and dry at home...most mid-size covers will fit in home washers and dryers - and, unlike non-woven materials, they can be thrown in a dryer.
- **Durable Fade-Resistant Base Fabrics** - Premium solution-dye fibers mean the covers resist fading and hold their color longer.

WeatherShield HD "Outsmart the Outdoors"™

Developed primarily for intense sun environments and long-term storage, WeatherShield®HD not only provides UV opacity, it repels water, blocks dust, tree sap and bird droppings, and is still breathable to allow moisture and heat to escape from under the cover.



Gray
Warranty - 5 years



HIGH-PERFORMANCE WOVEN FABRICS



Durable Outdoor Protection



Ultra'tect® covers were developed from the need for a cover that would retain its color and strength in extended outdoor exposure, while providing a high degree of water resistance and UV protection at a reasonable price.



We protect your vehicle and your selection of this fabric helps to protect our environment! WeatherShield®HP, WeatherShield®HD, Ultra'tect® and Sunbrella® use a superior fade-resistant solution-dye production process that SAVES 1,000 gallons of water for every 1,000 yards of fabric produced.



Gray Tan



Black Blue

Warranty - 4 years



Ultra'tect is made from a solution-dye WeatherMax®SL fabric with the following features and benefits:

- **Fade Resistant** - WeatherMax yarns have the color added to the polymer before it is extruded into yarn form for maximum fade resistance. (Each fiber is a solid color, NOT surface dyed.)
- **Superior Shape Retention** - WeatherMax fabrics are resistant to sagging because the fibers are designed to have minimal stretch.
- **Strong** - Using double 150 denier yarns in both the machine and cross direction (2/150's MD & CD) helps provide higher strength and better water resistance than using single 300 denier yarns.
- **Luxurious "Hand"** - The weave gives Ultra'tect covers more durability and dimensional stability with a luxurious "hand" or feel.
- **Water Resistant** - A highly water-repellent HydroMax finish on BOTH sides of the fabric helps protect against rain, while maintaining the fabric's breathability.
- **Excellent UV Protection** - Ideal for applications that are subject to prolonged sun exposure and extreme elements.
- **Easy to Use** - Ultra'tect's fabric weight is "just right" for easy use...heavy enough to stay in place and light enough to easily handle on a day-to-day basis.
- **Easy to Clean** - Most mid-size vehicle covers can be cleaned in a home washer and dryer.

HIGH-PERFORMANCE WOVEN FABRICS



Lightweight Sun Protection



Easy to handle for installation and removal, this lightweight cover provides good all-season protection.

- Woven fabric has a UV-reflective silver-colored finish that helps keep the vehicle cooler.
- Fabric is water resistant and also repels dust and dirt to help keep the vehicle clean.
- Compact for easy trunk storage.



Silver
Warranty - 3 years



Best For Intense Sun Environments



Thanks to its unique construction process, Sunbrella® provides protection and years of service in intense sun climates like Arizona and other areas of the Sunbelt, where UV rays can rapidly degrade the paint and interior. Because of the use of acrylic fibers, which are naturally UV resistant, Sunbrella has long been the recognized leader in long-wearing marine fabrics for bimini tops, sail covers and deck enclosures. Besides marine uses, Sunbrella is also used for commercial awnings due to its ability to provide UV blockage, along with a rich, woven finish. The acrylic fibers are solution dyed, before the fabric is woven, to assure the color goes all the way through the fabric. Using a special finish process, the material is then softened for use as a car cover fabric. The fabric is exceptionally strong and, coupled with its UV resistance, it also makes an excellent cover for RV's and trailers that spend extended time stored outside.



Toast Pacific Blue Cadet Gray

Warranty - 5 years

- **Long-Lasting Strength**
- **Fade Resistant**
- **Water Resistant**
- **Rot, Mildew Resistant**

HIGH-PERFORMANCE NON-WOVEN FABRICS



Maximum Protection Against Dust

Softest against fine paint finishes and almost totally dust-proof. The top two layers are polypropylene / polyethylene spunbond with a meltblown polypropylene middle layer to provide a superior barrier against dust. Soft, high-loft composite spunbond inner layer pampers and protects the vehicle's finish. Multi-layer construction provides substantially better dust protection compared to traditional woven material.



Color: Taupe
Warranty - 4 years



All-Weather Protection Using Film Barrier Technology

NOAH® barrier fabric actually stops water, yet it "breathes" to allow any trapped moisture, seam seepage or condensation to easily evaporate. The unique construction process (patent pending) results in a cover with maximum all-weather protection... highly water resistant, dust resistant, UV resistant and breathable to help make sure moisture and/or heat don't stay under the cover. Made in the U.S. by Kimberly-Clark, the fabric weighs only 4.75 oz./sq. yd., so it's easy to handle and fold.



Color: Gray
Warranty - 4 years

- Dual Protective Outer Layers
- Microporous Film Middle Layer
- Soft, Paint-Protecting Inner Layer



HIGH-PERFORMANCE NON-WOVEN FABRICS



Our Most LUXURIOUS Indoor Cover...

For years, European automotive enthusiasts have used lightweight, stretch fabric dust covers to protect fine vehicles that are stored indoors. The problem with these covers is that most are only "t-shirt" thin fabric and, over time, the cover becomes baggy

because it tends to stretch out of shape and lose memory. Covercraft developed a superior fabric for our Form-Fit® cover program using a polyester knit with spandex added to the yarns. That addition assures stretch AND the memory to return to shape. 100% cotton terry loop for the inside surface is interwoven in the knit, then sheared to a soft luxurious finish.



Unlike t-shirt type fabric, a Form-Fit cover acts like a soft fleece robe.... wrapping the vehicle.... following the lines and contours.... caressing and pampering glowing paint and metal surfaces. This 7.4 oz. per sq. yd. fabric has an exceptionally soft and cushiony feel. It's got some bulk to provide a little protection against dings and dents, and it is machine washable when it gets dirty.

For anyone who "spoils" their favorite ride, Form-Fit covers from Covercraft are sure to be the ultimate cover!

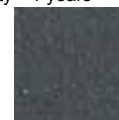
Available in six (6) colors: Warranty - 4 years



Metallic Dark Blue



Bright Red



Charcoal Gray



Silver Gray



Black



Hunter Green



READY-FIT® FABRICS



Semi-Custom Patterns Fit a Wide Variety of Vehicles



Block-it® 200 series - Good basic indoor or outdoor protection.



Block-it® 380 series - More performance at a value price.



Wolf Ready-Fit® logo silk-screened on the front hood area.



Evolution® (Technalon®) - Our most popular all-weather fabric.



Finally!!

360° ding/dent protection for use in all parking situations



360° PROTECTION



Carband™ encompasses all sides of a vehicle with a thick, tight-fitting, self-securing band.

- **Airflow**
Fully breathable spacer fabric material. Allows air to circulate.
- **Storage and Application**
Simple and easy to install. Storage bag included.
- **Can Be Used With or Without a Vehicle Cover**

- **Tight Fitting and Self Securing**
A strip of impact-absorbing material encompasses all sides of the vehicle with a thick, tight-fitting, self-securing band.
- **Patented in both the UK & US.**

SPECIALTY PERFORMANCE COVERS

For JEEP® Model Vehicles

Freedom Top® Storage Bag

- Durable vinyl construction with soft, non-woven protective backing.
- Folding "butterfly" design to separate driver and passenger-side tops.
- Contoured to shape of tops to prevent excessive movement.
- Built-in storage pockets for top-mounting hardware.
- Tie-down straps for securing in vehicle (2 or 4 door).
- Hook and loop closure.



Window Storage Bags

- 2 sizes: Small (for TJ) / Large (for TJ Unlimited & JK 2/4 door).
- Safe storage for removable windows.
- Vinyl construction with soft, non-woven protective backing.
- Layers of soft non-scratch fabric to protect plastic windows.
- Storage pocket for rear window bar.
- Adjustable carry handle straps reinforced with 2" webbing.
- Zipper closure.



Custom Fit Cab Area

A great way to protect the pickup cab area from heat, sun and snow.



Interior Covers

Easy-to-use protection when the top is down.



Cab Cooler®

- Custom patterned for SUV's and pickups.
- Helps protect your interior.
- Easy to store.



Hardtop Covers

Protects the inside & outside of your hardtop when removed or in storage.



Sport Compact Semi-Custom Patterned for Wings and Body Kits

Available in Block-It® Evolution® & Block-It® 200 Series.

Color: Gray only



EXTERIOR ACCESSORIES



Protecting Your Tires Just Became a Snap!



- Motorhomes
- Travel Trailers
- Fifth-Wheel Trailers
- Pop-Ups
- Horse Trailers
- Boat Trailers
- Car Trailers



Just spread the TireSaver, slide it over the tire, and let the steel ring "SNAP" it into place! Now your tires are protected and the TireSaver is held secure. **Choose from 7 sizes.**

Our exclusive spring-steel ring design holds the TireSaver® in place and eliminates the hassle of crawling around on the ground trying to secure straps and hardware.

TRUCK STOP CARGO BAR



- Fits pickup trucks, minivans and SUVs.
- Adjusts from 48 in. to 75 in.
- Easy installation, without tools.
- Heavy steel construction.
- Black textured finish.

Optional Net for Cargo Bar



Cargo bar and net included. Stretchable net accommodates a wide assortment of objects

Spare Tire Covers



- Available for SUV's, vans, motorhomes and RV's.
- Choose from two styles - budget or heavy-duty vinyl.



- Constructed of heavy duty 6mm 100% stretch shock cord.
- Cords radiate from stainless steel center ring which focuses net's strength at center of load where it is needed.
- Webb returns to its original unstretched shape after use.
- Available in Black, Blue, Red and Yellow, Webb color resists fading.
- Adds fashion to vehicle in and out of use.
- Mounting hardware included.
- Easy installation.



Use on pickups and trailer beds.
Small - 48"x60" to 66"x84"
Large - 60"x84" to 78"x114"



Fits vehicles with roof luggage racks.
Small - 30"x40" to 40"x50"
Large - 40"x50" to 45"x72"



Rear Bumper Fascia Cover 1997 - 2010 Corvette®

- Protects rear bumper area from scuffs while loading / unloading.
- Durable vinyl fabric has soft fleece backing.
- Attaches with hook & loop inside trunk area, unfolds for use.
- No tools or hardware required for installation.
- Inexpensive protection.



CUSTOM PATTERNED UV HEAT SHIELDS



Now Choose From 5 Colors and 1200+ CUSTOM Patterns

The only UV Shield to earn a U.S. Patent...the UV Heat Shield that pioneered a product segment...now available in **colors!** When the UVS100® was created back in 1985, it was so unique it was granted a Design Patent. Even though there are plenty of knock-offs on the market now, we still make the UVS100 Heat Shield by hand, one unit at a time, from laminating the panels to cutting the pattern.... these are truly Crafted2Fit®.



- Custom patterned - not a universal or "almost" fit.
- Laminated construction with insulation barrier.
- Easy to use - pre-sewn panels quickly accordion fold.



Just unfold and position across the windshield, then fold down sun visors.



Optional storage bag available.



Custom Patterned To Follow the Outline of the Windshield

High-performance radiant barrier material uses laminate construction with insulating foam and a clear mylar film on the inside. The side that faces the outside uses a metalized polyester laminate finish to reflect up to 97% of the sun's damaging UV rays.

- Laminated construction for insulation.
- Radiant barrier material.
- Outside silver reflective surface.
- Lightweight, easy to handle.



STORAGE ACCESSORIES



Handy Storage for Vehicle Odds & Ends...

Items like manuals, wax, polish, detailing products, tire pressure gauges, emergency tools and warning devices.



- No drilling (for easy installation).
- Custom patterned & engineered.
- Each "pocket" has a lid with closure latch.
- Rigid shaped back panel (depending on model).
- Formed pockets made from material similar to trunk carpet.



JEEP® - Inside Tailgate.



Mustang® Trunk.



Mustang® - Behind Front Seat.

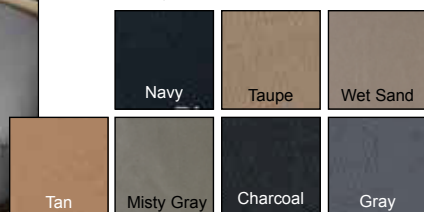
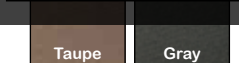
CUSTOM FIT SEAT PROTECTION

SEATSAVER We're Saving a Seat for You

Keep your seats looking new for years with slip-on SeatSaver™ seat protectors. Custom patterned, they slip on to provide protection from sun, dirt, outdoor fun, or workweek abuse. Breathable, heavy-duty polycotton fabric won't give you that "sticky" feeling like neoprene or vinyl seat covers. You can go anywhere in comfort and still be able to easily remove the seat covers if they become soiled. Just throw them into your home washer and dryer, and then slip them back on. Dirty dog? Kids with ice cream cones? Potted plants? Fun in the sun? Messy mechanics and greasy tools? Stop worrying! With SeatSaver seat protectors, your leather and velour seats are safe. The fabric is protected with a DWR (durable water repellency) finish that blocks most "accidents" from reaching the seats. Like a great pair of jeans, SeatSavers get softer and more comfortable with each washing (but we recommend you re-spray the DWR after every 5 or 6 washings).



Now available in 2 waterproof fabrics



SEATGLOVES

with Moisture Wicking Fabric Panel

High-Performance Seat Protectors With Styling and Comfort.

It's a fact – when you are comfortable, you drive better. SeatGloves® cover the prime sitting area of the seat and feature a center panel constructed of 3-dimensional fabric with a moisture-wicking surface layer. 3-dimensional spacer fabrics combine as many as three different fibers in a simultaneous knitting operation to create a fabric with moisture management on the surface, spacer fibers in the center for breathability, and stretch solid warp knit fabric in the bottom for additional durability. This is a high-performance warp knit – not a laminate and not a foam, so it won't flake or dry out.

Choose from five insert colors.....from mild to wild!



For bucket seats in cars, trucks and SUV's

Gray Tan Blue Red Yellow



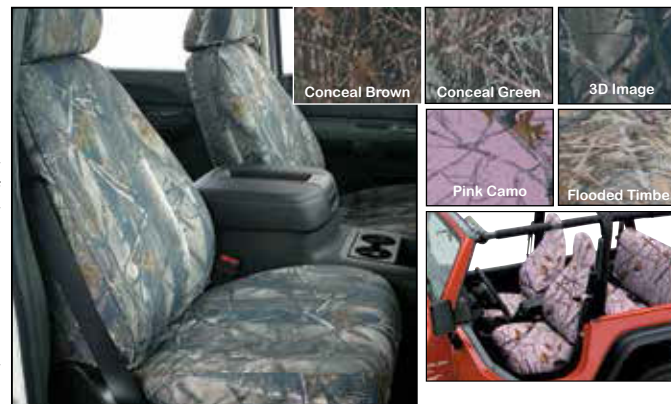
- **Moisture Management** – Seating panel materials help keep you comfortable.
- **Breathable Cushioning** – 3-dimensional center panel provides extra compression resistance, breathability and insulation.
- **Form-Fitting Border** – Stretch fabric has the look and feel of neoprene, but it's also breathable!
- **Easy to Install & Remove** – Semi-custom sizes for most bucket seats, even with side airbags.
- **Easy Care** – Just throw in the washer and dryer to clean.

Now available for seats with side airbags!



TRUE TIMBER CAMO

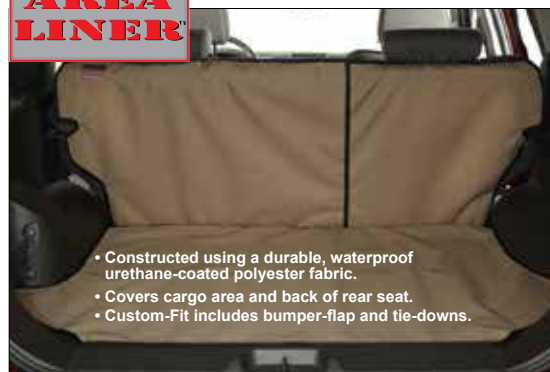
Covercraft teamed up with the folks at True Timber® Camo in an exclusive new program to offer our SeatSaver™ seat protectors in their most popular camo patterns. Constructed of durable multi-filament polyester fabric with a DWR (durable water repellency) finish, they include all the features that have made SeatSavers a best seller - custom tailored fit; easy-on/easy off; clean in a home washer/dryer; and breathable fabric for travel comfort.



CARGO AREA LINER

Custom Cargo Area Liner™

Also Available in Universal-Fit



- Constructed using a durable, waterproof urethane-coated polyester fabric.
- Covers cargo area and back of rear seat.
- Custom-Fit includes bumper-flap and tie-downs.

Custom-Fit Cargo Area Liner protects the entire floor area and seat back. Hook & loop strip allows split seats to operate.



Custom-Fit Cargo Area Liner has a bumper flap that easily pulls out from underneath when needed.



Custom-Fit Cargo Area Liner (shown with bumper flap stored) helps protect your cargo area from dirt, scrapes & stains.



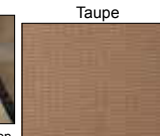
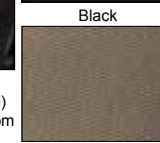
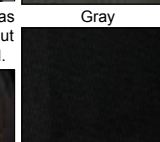
Cargo Area Liner easily attaches around vehicle headrests with adjustable straps and side-release buckles.



Multiple tie-downs, as needed, attach to existing cargo hooks.



Finished edges and custom-fit hook & loop closures for split seat applications.



TAILGATE NETS



WORLD'S FINEST TAILGATE NET

Pro Flow™ Flap Vented Theme Graphics

Wall-to-wall U.S. Stars and Stripes. Patented vent-cut design allows nets to be silkscreened with eye-catching graphics. Vents open and close while driving for gas-saving air flow. Available for both mini and full-sized pickups. Stainless steel mounting hardware. Heavy 22 oz. fabric.



Original Performance Series

Classic design in three sizes: full, mid & mini trucks. Stainless steel hardware. Heavy 22 oz. fabric. Mid-size net fits T-100 & Dakota. Available in red, white, blue, gray and black.



Specialty Performance Series

Stepside – Custom-sized Pro Net™ fits most full-sized stepside and flareside pickups. Stainless steel mounting hardware. Heavy 22 oz. fabric.



Pro Runner™

Low-cost Pro Runner model features our patented air flow, a balanced design and the patented Pro Net tensing system. Plated steel hardware. 18 oz. fabric.



THE LEADER IN **Crafted2Fit®** PROTECTION SINCE 1965

SPECIAL PROGRAMS



Show your support for Breast Cancer Awareness with "Covers for Causes".

Covercraft will contribute a percentage of our profits from the sales of these products to breast cancer research programs.

The Covercraft "Covers for Causes" pink logo is proudly silk-screened across the front grille area of the cover, or the center area of the UVS100® UV Heat Shield.

Custom-Patterned Vehicle NOAH® Fabric Covers and UVS100 Heat Shields feature the "Covers for Causes" silk-screened logo.

UVS100® ULTRA-VIOLET SHIELD

This premium quality, **custom-patterned** folding heat shield has a reflective fabric on the outer side, soft felt on the inside.

Both fabrics are laminated to a foam core board.

Color: Pink



NOAH barrier fabric actually stops water, yet it "breathes" to allow any trapped moisture, seam seepage or condensation to easily evaporate.



Color: Pink
Warranty - 4 years

CUSTOM COVER ACCESSORIES

Gust Guard® - helps hold car and light truck covers in place. Kit includes:
4 – Adjustable hem clamps (black),
2 – "Quick Grip" friction locks (red) and
2 – Seven foot long white cords.



Custom Embroidery - custom covers can be personalized with embroidered initials, monograms or names.



Storage Bag - polycotton duffel bag with drawstring.



Deluxe Cable Lock Kit - vinyl-coated cable & padlock.



Tote Bag - zippered storage bag with web straps. Constructed of durable vinyl-coated polyester fabric. Helps keep cover neat and clean when not in use. Two sizes accommodate most covers.

Reflective Welting

This new option provides nighttime safety AND really jazzes up a cover. Any CUSTOM cover (except Form-Fit®) can be ordered with this option. 500 candlepower reflective welting is sewn into the front-to-rear silhouette seam of the cover.

