



SAFETY SOLUTIONS



2020



ECCOESG





WITH ECCO ON THE JOB, THE WORK

GETS DONE

For 48 years, ECCO Safety Group (ESG) has designed and manufactured some of the world's most effective and innovative warning equipment for commercial and public safety vehicles. ESG provides superior protection and enhanced safety on the job site and on the road.

ESG's brands, ECCO and Code 3, serve thousands of OEM, private label, fleet and aftermarket customers in a wide range of industries. ESG serves its customers globally with facilities in the Americas, Europe, Asia and Australia along with a portfolio of the most respected brands in the industry. At our core, we are committed to protecting people while supporting our customers from order to install and beyond.

SAFETY SOLUTIONS

ECCO CARE	5
TERMINOLOGY GUIDE	6
DEFINITIONS OF CERTIFICATIONS & STANDARDS	7
BEACONS	9
MICROBARS & MINIBARS	23
DIRECTIONALS	31
SAFETY DIRECTOR™	47
LIGHTBARS	51
WORKLIGHTS	59
UTILITY BARS	85
INTERIOR LIGHTING	89
ALARMS	97
CAMERA SYSTEMS	106
MERCHANDISING SOLUTIONS	127
PART NUMBER INDEX	131

ACCESSORIES FOR EACH CATEGORY ARE LOCATED AT THE END OF EACH SECTION IF APPLICABLE

STANTEC
CONCRETE



ECCO CARE

THE ECCO CARE PROMISE

ECCO is known the world over as the premier commercial warning and safety products manufacturer. Our reputation for excellence is rooted in an unwavering commitment to protecting your most important asset—your people. Helping them do their jobs safely and efficiently drives us to exceed the most rigorous engineering and service standards.

Each day, we hold ourselves accountable to the ECCO Care Promise—excellent customer service, superior products, the industry's fastest lead times, customization and a no-hassle warranty.





ECCO®

BEACONS



FEATURED BEACON

7965A - SAE CLASS I LED BEACON

ECCO MODEL 7965 12 VDC
800-435-5306
www.eccogroup.com

**BE SEEN
BE SAFE**

**5 YEAR
NO-HASSLE
WARRANTY**

BEACONS



EB7260 SERIES MINI POLE MOUNT



12-24V | 1.4A | 41 FP (A, C, CA, CX) 96 FP (CXX)

2.4" H x 3.2" Diameter | 61mm H x 81mm Diameter

MODEL	MOUNT	CLASS	LENS COLOR	LED COLOR OPTIONS
EB7265A	3 Bolt or 1/2" Pipe	I	<input checked="" type="checkbox"/> A	<input checked="" type="checkbox"/> A
EB7265C	3 Bolt or 1/2" Pipe	I	<input type="checkbox"/> C	<input type="checkbox"/> C
EB7265CX	3 Bolt or 1/2" Pipe	I	<input type="checkbox"/> C	<input checked="" type="checkbox"/> A <input checked="" type="checkbox"/> B <input checked="" type="checkbox"/> G <input checked="" type="checkbox"/> R
EB7265CXX	3 Bolt or 1/2" Pipe	I	<input type="checkbox"/> C	<input checked="" type="checkbox"/> AB <input checked="" type="checkbox"/> AC <input checked="" type="checkbox"/> AG <input checked="" type="checkbox"/> AR
EB7260A	3 Bolt or 1/2" Pipe	II	<input checked="" type="checkbox"/> A	<input type="checkbox"/> C
EB7260CA	3 Bolt or 1/2" Pipe	II	<input type="checkbox"/> C	<input checked="" type="checkbox"/> A

Replace "X" with **A** = Amber, **B** = Blue, **C** = Clear, **G** = Green, **R** = Red

DESIGN FEATURES

- High-intensity illumination
- Compact design without sacrificing light output
- Sync-capable with ED5051, ED3777, ED3701, ED3702, ED3706, ED3712, ED3766 and Microbars 5550 & 5545

7460 SERIES PROFILE™ COMPACT, LOW PROFILE



12-36V | 3.6A | 80 FPMx8

3.1" H x 6.4" Diameter | 79mm H x 163mm Diameter

MODEL	MOUNT	LENS COLOR	LED COLOR OPTIONS
7460X	3 Bolt / 1" Pipe or VM	<input checked="" type="checkbox"/> A <input checked="" type="checkbox"/> B <input checked="" type="checkbox"/> G <input checked="" type="checkbox"/> R	<input type="checkbox"/> C
7460CX	3 Bolt / 1" Pipe or VM	<input type="checkbox"/> C	<input checked="" type="checkbox"/> A <input type="checkbox"/> C

Replace "X" with **A** = Amber, **B** = Blue, **C** = Clear, **G** = Green, **R** = Red
Add "-VM" mounting extension to end of model for vacuum-magnet mount

DESIGN FEATURES

- Parabolic reflector
- Pulse8 (eight flash per cycle) flash pattern
- Overhead heatsink design allows for unobtrusive pipe mounting with flange removed

EB7180 SERIES

COMPACT, LOW PROFILE

COMPACTO Y DE PERFIL BAJO | COMPACT ET PROFIL BAS



12-24V | 6.2A | 8 FP

2.3" H x 6.5" L x 6.5" D | 58mm H x 165mm L x 165mm D

MODEL	MOUNT	LENS COLOR	LED COLOR OPTIONS
EB7180A	4 Bolt or VM	<input checked="" type="checkbox"/> A	<input checked="" type="checkbox"/> A
EB7180CX	4 Bolt or VM	<input type="checkbox"/> C	<input checked="" type="checkbox"/> A <input type="checkbox"/> C

Replace "X" with **A** = Amber, **C** = Clear | Add "-VM" mounting extension to end of model for vacuum-magnet mount

DESIGN FEATURES

- Simulated rotate
- Multiple units can be synchronized
- Cigarette plug with on/off and flash pattern switch (vacuum-magnet only)

EB7185 SERIES

DUAL-COLOR



12-24V | 8.6A | 24 FP

3.3" H x 6.5" L x 6.5" D | 84mm H x 165mm L x 165mm D

MODEL	MOUNT	LENS COLOR	LED COLOR OPTIONS
EB7185AAA	4 Bolt or VM	<input checked="" type="checkbox"/> A	<input checked="" type="checkbox"/> AA
EB7185AAA-T13	4 Bolt or VM	<input checked="" type="checkbox"/> A	<input checked="" type="checkbox"/> AA
EB7185CXX	4 Bolt	<input type="checkbox"/> C	<input checked="" type="checkbox"/> AA <input checked="" type="checkbox"/> AB <input type="checkbox"/> AC <input checked="" type="checkbox"/> AG <input checked="" type="checkbox"/> AR <input type="checkbox"/> CC
EB7185CXX-T13	4 Bolt	<input type="checkbox"/> C	<input checked="" type="checkbox"/> AA <input type="checkbox"/> AC

Replace "X" with **A** = Amber, **B** = Blue, **C** = Clear, **G** = Green, **R** = Red | Add "-VM" mounting extension to end of model for vacuum-magnet mount

DESIGN FEATURES

- T13 extension added to models that include CA T13 flash patterns
- Simulated rotate and hi/lo intensity
- Multiple units can be synchronized
- Cigarette plug with on/off and flash pattern switch (vacuum-magnet only)

7960 SERIES PULSE® HEAVY-DUTY LED



12-24V | **2.5A** | **11 FP**
5.7" H x 6.5" Diameter | 145mm H x 165mm Diameter

MODEL	MOUNT	LENS COLOR	LED COLOR
7960X	3 Bolt / 1" Pipe or VM	<input type="checkbox"/> A <input type="checkbox"/> B <input type="checkbox"/> R	<input type="checkbox"/> C
7960CC	3 Bolt / 1" Pipe or VM	<input type="checkbox"/> C	<input type="checkbox"/> C

Replace "X" with **A** = Amber, **B** = Blue, **R** = Red | Add "-VM" mounting extension to end of model for vacuum-magnet mount

DESIGN FEATURES

- Coated, die-cast aluminum base protects against corrosion, vibration and heat (permanent-mount versions are epoxy filled)
- Thread-on polycarbonate lens
- Reverse polarity, voltage spike and surge protected

7160 SERIES REFLEX® HEAVY-DUTY LED



12-24V | **2.0A** | **23 FP**
3.9" H x 6.5" Diameter | 99mm H x 165mm Diameter

MODEL	MOUNT	LENS COLOR	LED COLOR OPTIONS
7160X	3 Bolt / 1" Pipe or VM	<input type="checkbox"/> A <input type="checkbox"/> B <input type="checkbox"/> G <input type="checkbox"/> R	<input type="checkbox"/> C
7160CX	3 Bolt / 1" Pipe or VM	<input type="checkbox"/> C	<input type="checkbox"/> A <input type="checkbox"/> C

Replace "X" with **A** = Amber, **B** = Blue, **C** = Clear, **G** = Green, **R** = Red | Add "-VM" mounting extension to end of model for vacuum-magnet mount

DESIGN FEATURES

- High-intensity LEDs and reflector technology
- Hi/lo intensity control | Multiple units can be synchronized
- Cigarette plug with on/off and flash pattern switch (vacuum-magnet only)

6262 SERIES INDUSTRIAL APPLICATION



A, C & R only



12-80V | 0.1A | 80 FPMx8

4.9" H x 3.9" Diameter | 124mm H x 98mm Diameter (6262 / 6263)
4.9" H x 2.8" Diameter | 124mm H x 71mm Diameter (6267)

MODEL	MOUNT	LENS COLOR	LED COLOR	TYPE
6262X	2 Bolt	<input type="checkbox"/> A <input type="checkbox"/> B <input type="checkbox"/> C <input type="checkbox"/> G <input type="checkbox"/> R	<input type="checkbox"/> C	Wire Exit: Side
6263A	2 Bolt	<input type="checkbox"/> A	<input type="checkbox"/> C	Wire Exit: Bottom
6267X	1/2" Pipe	<input type="checkbox"/> A <input type="checkbox"/> B <input type="checkbox"/> C <input type="checkbox"/> G <input type="checkbox"/> R	<input type="checkbox"/> C	

Replace "X" with **A** = Amber, **B** = Blue, **C** = Clear, **G** = Green, **R** = Red

DESIGN FEATURES

- Pulse8 flash operation, 8 flashes per cycle (80FPM)
- Reinforced nylon base with epoxy-sealed electronics provides superior environmental protection
- Thread-on polycarbonate lens
- Reverse polarity, voltage spike and surge protected

6465 SERIES INDUSTRIAL APPLICATION



A, C & R only

excluding -VM



12-80V | 0.1A | 80 FPMx8
3.9" H x 5.1" Diameter | 99mm H x 130mm Diameter

MODEL	MOUNT	LENS COLOR	LED COLOR
6465X	3 Bolt or MG	<input type="checkbox"/> A <input type="checkbox"/> B <input type="checkbox"/> C <input type="checkbox"/> G <input type="checkbox"/> R	<input type="checkbox"/> C

Replace "X" with **A** = Amber, **B** = Blue, **C** = Clear, **G** = Green, **R** = Red | Add "-MG" mounting extension to end of model for magnet mount
Add "-HBT" mounting extension to end of model for high-bond tape mount (6465A only)

DESIGN FEATURES

- Pulse8 flash operation, 8 flashes per cycle (80FPM)
- Reinforced-nylon base and polycarbonate lens

7945 SERIES PULSE® II LED BEACON



12-48V | 1.3A | 11 FP
 4.9" H x 6.5" Diameter | 124mm H x 165mm Diameter (7945 / EB7930)
 6.7" H x 6.5" Diameter | 170mm H x 165mm Diameter (7950 / EB7935)



MODEL	TYPE	MOUNT	LENS COLOR OPTIONS
7945X	5"	3 Bolt / 1" Pipe, VM or HBT	■ A ■ B C ■ G ■ R
7950X	7"	3 Bolt / 1" Pipe, VM or HBT	■ A ■ B C ■ G ■ R

Replace "X" with **A** = Amber, **B** = Blue, **C** = Clear, **G** = Green, **R** = Red
 Add "**-VM**" mounting extension to end of model for vacuum-magnet mount
 Add "**-HBT**" mounting extension to end of model for high-bond tape mount

DESIGN FEATURES

- Reinforced polypropylene base, polycarbonate lens
- Switched cigarette plug adapter (vacuum-magnet models)

7965 SERIES PULSE® II LED BEACON



12-24V | 3.6A | 11 FP
 4.9" H x 6.5" Diameter | 124mm H x 165mm Diameter (7965 / 7975)
 6.7" H x 6.5" Diameter | 170mm H x 165mm Diameter (7970 / 7980)



MODEL	TYPE	MOUNT	LENS COLOR
7965X	5"	3 Bolt / 1" Pipe, VM or HBT	■ A ■ B C ■ G ■ R
7965A-DEL3	5" Delphi 3-Pin Connector	3 Bolt	■ A
7970X	7"	3 Bolt / 1" Pipe, VM or HBT	■ A ■ B C ■ G ■ R

Replace "X" with **A** = Amber, **B** = Blue, **C** = Clear, **G** = Green, **R** = Red
 Add "**-VM**" mounting extension to end of model for vacuum-magnet mount
 Add "**-HBT**" mounting extension to end of model for high-bond tape mount

DESIGN FEATURES

- Aluminum base, polycarbonate lens
- Switched cigarette plug adapter (vacuum-magnet models)

EB7930 SERIES PULSE® II LED BEACON - SEVERE VIBRATION



12-48V | **1.3A** | **11 FP**
 4.9" H x 6.5" Diameter | 124mm H x 165mm Diameter (EB7930)
 6.7" H x 6.5" Diameter | 170mm H x 165mm Diameter (EB7935)

MODEL	TYPE	MOUNT	LENS COLOR OPTIONS
EB7930X	5"	3 Bolt or 1" Pipe	■ A ■ B C ■ G ■ R
EB7935X	7"	3 Bolt or 1" Pipe	■ A ■ B C ■ G ■ R

Replace "X" with **A** = Amber, **B** = Blue, **C** = Clear, **G** = Green, **R** = Red

DESIGN FEATURES

- Epoxy-filled, reinforced polypropylene base, suitable for heavy-duty applications
- Polycarbonate lens

7975 SERIES PULSE® II LED BEACON - SEVERE VIBRATION



12-24V | **3.6A** | **11 FP**
 4.9" H x 6.5" Diameter | 124mm H x 165mm Diameter (7975)
 6.7" H x 6.5" Diameter | 170mm H x 165mm Diameter (7980)

MODEL	TYPE	MOUNT	LENS COLOR
7975X	5"	3 Bolt or 1" Pipe	■ A ■ B C ■ G ■ R
7980X	7"	3 Bolt or 1" Pipe	■ A ■ B C ■ G ■ R

Replace "X" with **A** = Amber, **B** = Blue, **C** = Clear, **G** = Green, **R** = Red

DESIGN FEATURES

- Epoxy-filled, reinforced aluminum base, suitable for heavy-duty applications
- Polycarbonate lens

ET0010 ROADSIDE RECHARGEABLE FLASHER KIT



5V | 1.4A | 9 FP

1.5" H x 5" Diameter | 39mm H x 126mm Diameter

MODEL	MOUNT	TYPE	LENS	ILLUMINATION COLOR OPTION
ET0010	Magnet	Single	<input type="checkbox"/> C	<input checked="" type="checkbox"/> A

DESIGN FEATURES

- Durable charging case with AC & DC supplied chargers, includes four pucks
- Powerful magnet attaches to metal surfaces (not recommended for use while driving)
- Waterproof
- 360° illumination with top center illumination
- Charging time: six hours from fully drained
- White light run time: 9 hours (when fully charged), perimeter flashes up to 12 hours (when fully charged)

7660 SERIES ROTOLED™ LED HYBRID



A, B & R only

A & R only



12-24V | 2.1A | 1 FP | 75 FPM / 125 FPM

6.2" H x 6.5" Diameter | 156mm H x 165mm Diameter

MODEL	MOUNT	LENS COLOR	LED COLOR
7660X	3 Bolt or VM	<input checked="" type="checkbox"/> A <input checked="" type="checkbox"/> B <input checked="" type="checkbox"/> G <input checked="" type="checkbox"/> R	<input type="checkbox"/> C
7660CC	3 Bolt or VM	<input type="checkbox"/> C	<input type="checkbox"/> C

Replace "X" with **A** = Amber, **B** = Blue, **C** = Clear, **G** = Green, **R** = Red | Add "-VM" mounting extension to end of model for vacuum-magnet mount

DESIGN FEATURES

- LED hybrid technology provides a high-intensity rotating warning signal with no gears, brushes or bulbs to wear out
- Eight high-intensity LEDs combined with a TIR optic
- UV hard, coated lens to greatly reduce cracking, hazing, abrasion and fading
- Universal bolt pattern for simple mounting

EB7800 SERIES ROTATOR



light output only

12-24V | **1.4A** | **185 FPM**
 5.7" H x 6.0" Diameter | 146mm H x 153mm Diameter

MODEL	MOUNT	LENS COLOR	LED COLOR
EB7810A	DIN Pole	<input checked="" type="checkbox"/> A	<input type="checkbox"/> C
EB7813A	3 Bolt or MG	<input checked="" type="checkbox"/> A	<input type="checkbox"/> C
EB7816A	1 Bolt	<input checked="" type="checkbox"/> A	<input type="checkbox"/> C



Add "-MG" mounting extension to end of model for magnet mount

DESIGN FEATURES

- Economical beacon available in several mounting styles
- DIN models designed to fit DIN #72591
- Reinforced-nylon base and polycarbonate lens
- Flexi-base rubber material resists vibration & protects against minor impacts
- Twist-on lens secures with a locking screw

5800 SERIES ROTATOR



12V | **4.9A** | **195 FPM**
 8.2" H x 5.3" Diameter | 208mm H x 134mm Diameter (5810)
 5.7" H x 6.0" Diameter | 146mm H x 153mm Diameter (5813)
 7.3" H x 5.3" Diameter | 185mm H x 134mm Diameter (5816)

MODEL	MOUNT	LENS COLOR OPTIONS
5810A	DIN Pole	<input checked="" type="checkbox"/> A
5813A	3 Bolt or MG	<input checked="" type="checkbox"/> A
5816A	1 Bolt	<input checked="" type="checkbox"/> A



Add "-MG" mounting extension to end of model for magnet mount

DESIGN FEATURES

- DIN models designed to fit DIN #72591
- Flexi-Base rubber material resists vibration & protects against minor impacts
- Twist-on lens secures with a locking screw
- 55-watt halogen bulb

BEACON ACCESSORIES



LENSES



R5810LA
USED WITH 5800 SERIES



R5840LA
USED WITH 5800 SERIES



R6050LA
R6050LB
R6050LC
R6050LG
R6050LR
USED WITH 7900 SERIES



R6070LA
R6070LB
R6070LC
R6070LG
R6070LR
USED WITH 7900 SERIES



R6260LA
R6260LB
R6260LC
R6260LR
USED WITH 6262 SERIES



R6400LA
R6400LB
R6400LC
R6400LG
R6400LR
USED WITH 6465 SERIES



R7960LA
R7960LB
R7960LC
R7960LG
R7960LR
USED WITH 7960 SERIES



R7160LA
R7160LB
R7160LC
R7160LG
R7160LR
USED WITH 7160 SERIES



R7660LA
R7660LB
R7660LC
R7660LG
R7660LR
USED WITH 7660 SERIES

A = Amber, B = Blue, C = Clear, G = Green, R = Red

LIGHT SOURCE COMPONENTS



R5100RF
ROTATOR BELT
/ REFLECTOR
USED WITH 5800 SERIES



R5800RA
BELT DRIVE
ROTATOR 12V
USED WITH 5800 SERIES

CABLES & PLUGS



R6600CP
15' CIGARETTE CORD
& PLUG
USED WITH 6400 & 7900 SERIES

BEACON ACCESSORIES



GUARDS & COVERS



A6050BG
5" BRANCH GUARD
USED WITH 7160, 7930,
7945, 7965 & 7975



A6070BG
7" BRANCH GUARD
USED WITH 7935, 7950,
7960, 7970 & 7980



A6220BG
BRANCH GUARD
USED WITH 6200 SERIES



A6400BG
BRANCH GUARD
USED WITH 6400 SERIES



A6050DC
5" DUST COVER
USED WITH 7930, 7945,
7965 & 7975



A6070DC
7" DUST COVER
USED WITH 7935, 7950,
7970 & 7980



A6400HC
1/2 LENS COVER
USED WITH 6400 SERIES



A6600HT
1/2 LENS COVER
USED WITH 7930, 7945,
7965 & 7975



A6501BT
BLACK TOP
USED WITH 6500, 6600, 6700,
6900 & 7900 SERIES

SWITCHES & CONTROLS



E22127SB
SWITCH BOX - 3 LEVEL
SLIDE, 6 SWITCH 12V
USED WITH ALL BEACONS



A9000
SWITCHBOX -
6 SWITCH 12V
USED WITH ALL BEACONS



A9891
ILLUMINATED
12V-AMBER-SPST
USED WITH ALL BEACONS



A9893
SWITCH PANEL -
SINGLE SLOT
(EXCLUDES SWITCH)
USED WITH A9891



A9904
BRACKET
MOUNTING KIT
USED WITH A9901



A9905SW
ON/OFF & FLASH
PATTERN SWITCHES
USED WITH ALL BEACONS



A9901
ILLUMINATED 12V
USED WITH ALL BEACONS



A9902
BRACKET -
END SECTION
USED WITH A9901

BEACON ACCESSORIES



SWITCHES & CONTROLS



A9903
BRACKET -
CENTER SECTION
USED WITH A9901



EZ3710
LIGHTHEAD PROGRAMMER
12V | 24A MAX
USED WITH EB7185, EB7260, EB7265

MOUNTING HARDWARE



A5850TB
T BRACKET DIN
POLE MOUNT
USED WITH 5810



A5850LB
L BRACKET DIN
POLE MOUNT
USED WITH 5810



A6400MB
1" PIPE MIRROR
BRACKET
USED WITH 7460, 7945 & 7950



A6400MBP
MIRROR BRACKET ADAPTER PLATE
(USE WITH A6400MB)
USED WITH 6200 & 6400 SERIES



A7660PF
1" PIPE MOUNT
FLANGE
USED WITH 7600 SERIES



A6600VDK
VIBRATION DAMPING
MOUNT KIT
USED WITH 7100, 7400 & 7900 SERIES



A6600SLB
SELF-LEVELING BRACKET
USED WITH 7100, 7400 & 7900 SERIES



A6000VMK
VACUUM-MAGNET
MOUNT KIT
USED WITH 7100, 7400 & 7900 SERIES



A7660VMK
VACUUM-MAGNET
MOUNT KIT
USED WITH 7400 SERIES



A6600MK
MAGNET MOUNT KIT
USED WITH 7100, 7400 & 7900 SERIES
KIT DE MONTAJE MAGNÉTICO
TROUSSE DE SUPPORT MAGNÉTIQUE



A7660MK
MAGNET MOUNT KIT
(REQUIRES A7660PF)
USED WITH 7400 & 7600 SERIES



A7180VMK
VACUUM-MAGNET
MOUNT KIT
USED WITH EB7180 (5A FUSE)

BEACON ACCESSORIES



MOUNTING HARDWARE



A7185VMK
VACUUM-MAGNET
MOUNT KIT
USED WITH EB7185 (15A FUSE)



A6000HBTK
HIGH-BOND TAPE KIT
USED WITH 6900, 7900 SERIES



A6465HBTK
HIGH-BOND TAPE KIT
USED WITH 6465



EZ2000HBT
SELF-ADHESIVE, SINGLE USE
MAGNETIC MOUNTING PLATE
USED WITH ALL MINIBARS (2 PLATES)



EZ1000W-FL
3RD BRAKELIGHT
PLATFORM, LED
FOR F150, F250, F350
USED WITH ALL BEACONS



EZ1000B-FL
3RD BRAKELIGHT
PLATFORM, LED
FOR F150, F250, F350
USED WITH ALL BEACONS



EZ1001W-FH
3RD BRAKELIGHT
PLATFORM, HALOGEN
FOR F150, F250, F350
USED WITH ALL BEACONS



EZ1001B-FH
3RD BRAKELIGHT
PLATFORM, HALOGEN
FOR F150, F250, F350
USED WITH ALL BEACONS



ECCO®

MICROBARS & MINIBARS



FEATURED MICROBAR
5545CA - 11" SAE CLASS I MICROBAR

BIG ON

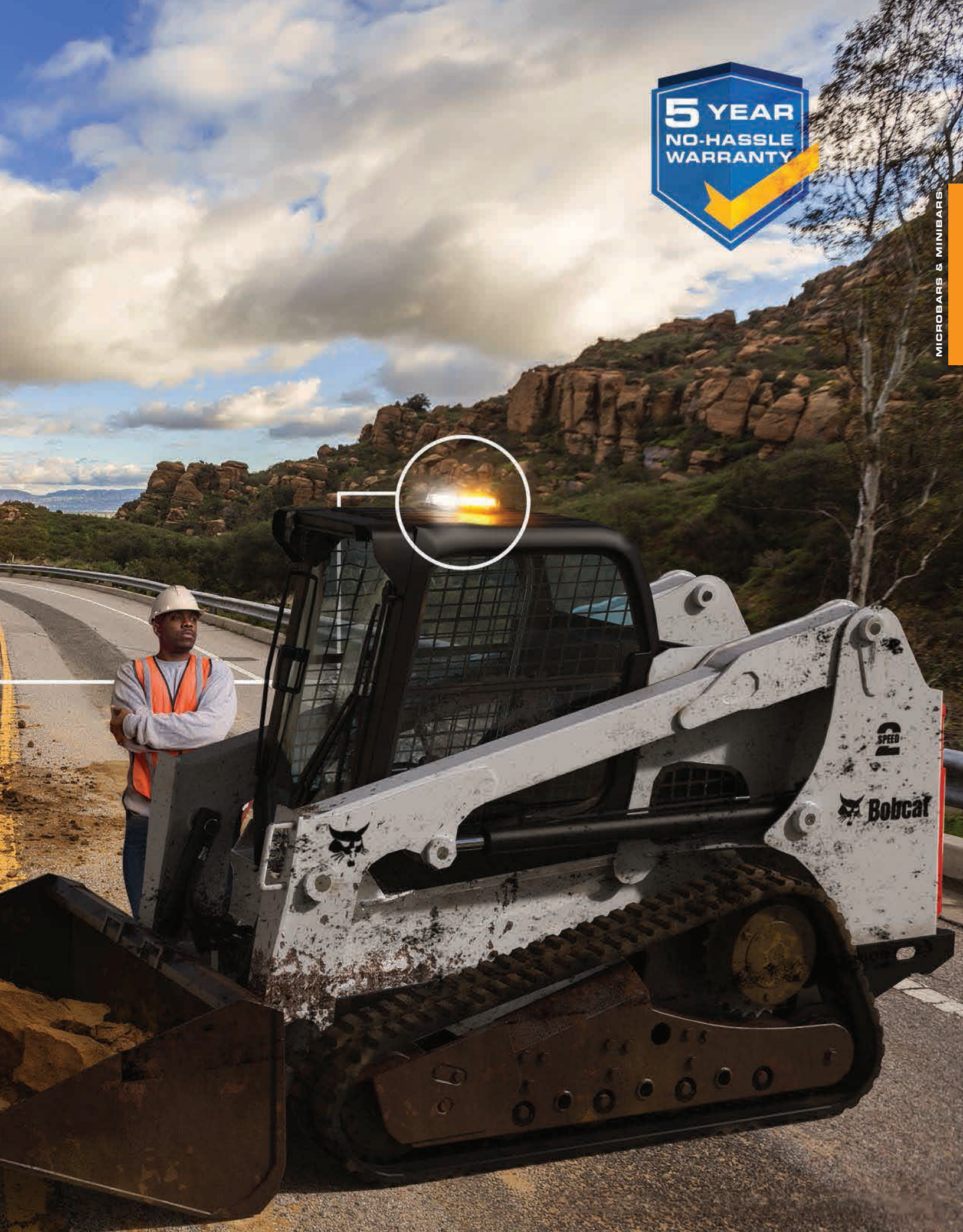
PERFORMANCE

DESIGNED TO MEET YOUR

NEEDS

**5 YEAR
NO-HASSLE
WARRANTY**

MICROBARS & MINIBARS



5550 SERIES REFLEX® 11" MICROBAR



12-24V | 3.4A | 91 FP

2.2" H x 10.9" L x 7.6" D | 56mm H x 278mm L x 194mm D

MODEL	MOUNT	TYPE	LENS COLOR	LED COLOR OPTIONS
5550A	4 Bolt or VM	Single	<input checked="" type="checkbox"/> A	<input checked="" type="checkbox"/> A
5550CX	4 Bolt or VM	Single	<input type="checkbox"/> C	<input checked="" type="checkbox"/> A <input type="checkbox"/> C
5550CXX	4 Bolt or VM	Dual	<input type="checkbox"/> C	<input checked="" type="checkbox"/> AB <input type="checkbox"/> AC <input type="checkbox"/> AG <input type="checkbox"/> AR

Replace "X" with A = Amber, B = Blue, C = Clear, G = Green, R = Red | Add "-VM" mounting extension to end of model for vacuum-magnet mount

DESIGN FEATURES

- 4 LED reflector modules, each containing 12 LEDs, provide high-intensity light output
- Cigarette plug with on/off and flash pattern selection switch (vacuum-magnet)
- Polycarbonate base & low-profile lens
- Includes dimming function
- Sync-capable with existing line of Reflex minibars

5545 SERIES REFLEX® 11" MICROBAR



12-24V | 0.7A | 35 FP

2.2" H x 10.9" L x 7.6" D | 56mm H x 278mm L x 194mm D

MODEL	MOUNT	TYPE	LENS COLOR	LED COLOR
5545A	4 Bolt or VM	Single	<input checked="" type="checkbox"/> A	<input checked="" type="checkbox"/> A
5545CA	4 Bolt or VM	Single	<input type="checkbox"/> C	<input checked="" type="checkbox"/> A

Add "-VM" mounting extension to end of model for vacuum-magnet mount

DESIGN FEATURES

- 4 LED reflector modules, each containing 6 LEDs, provide high-intensity light output
- Cigarette plug with on/off and flash pattern selection switch (vacuum-magnet)
- Polycarbonate base & low-profile lens
- Sync-capable with existing line of Reflex minibars

5590 SERIES REFLEX® 15" MINIBAR



12-24V | 6.0A | 18 FP

2.5" H x 15" L x 9" D | 63mm H x 381mm L x 229mm D

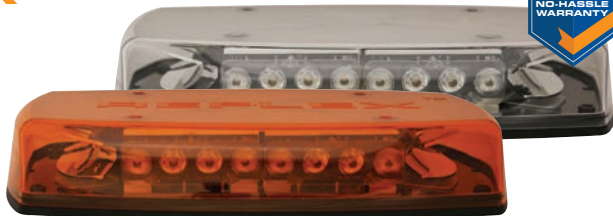
MODEL	MOUNT	TYPE	LENS COLOR	LED COLOR OPTIONS
5590A	4 Bolt, MG, VM or HBT	Single	<input checked="" type="checkbox"/> A	<input checked="" type="checkbox"/> A
5590CX	4 Bolt, MG, VM or HBT	Single	<input type="checkbox"/> C	<input checked="" type="checkbox"/> A <input checked="" type="checkbox"/> B <input type="checkbox"/> C <input checked="" type="checkbox"/> G <input checked="" type="checkbox"/> R
5590CXX	4 Bolt, MG, VM or HBT	Split	<input type="checkbox"/> C	<input checked="" type="checkbox"/> AB <input type="checkbox"/> AC <input checked="" type="checkbox"/> AG <input checked="" type="checkbox"/> AR <input checked="" type="checkbox"/> RB <input checked="" type="checkbox"/> RC

Replace "X" with **A** = Amber, **B** = Blue, **C** = Clear, **G** = Green, **R** = Red | Add "-MG" mounting extension to end of model for magnet mount
Add "-VM" mounting extension to end of model for vacuum-magnet mount | Add "-HBT" mounting extension to end of model for high-bond tape mount

DESIGN FEATURES

- Combines Reflective and TIR Optic LED modules that focus front/rear warning and optimize wide-angle side warning
- Cigarette plug with on/off and flash pattern selection switch (vacuum-magnet & magnet only)

5597 SERIES REFLEX® 15" MINIBAR



12-24V | 6.0A | 18 FP

2.5" H x 15" L x 9" D | 63mm H x 381mm L x 229mm D

MODEL	MOUNT	TYPE	LENS COLOR	LED COLOR
5597A	4 Bolt, MG or VM	Single	<input checked="" type="checkbox"/> A	<input checked="" type="checkbox"/> A
5597CA	4 Bolt, MG or VM	Single	<input type="checkbox"/> C	<input checked="" type="checkbox"/> A
5597CAC	4 Bolt, MG or VM	Split	<input type="checkbox"/> C	<input type="checkbox"/> AC

Add "-MG" mounting extension to end of model for magnet mount | Add "-VM" mounting extension to end of model for vacuum-magnet mount

DESIGN FEATURES

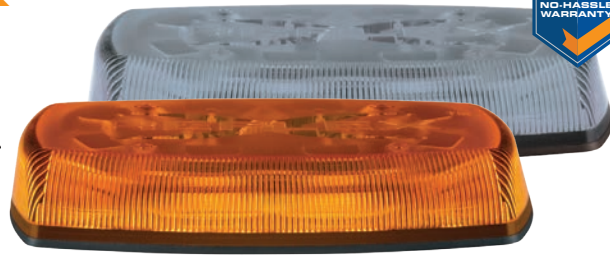
- Lenticular optic lens with combined Reflective and TIR Optics LED modules that focus front/rear warning and optimize wide-angle side warning
- Polycarbonate base & low profile lens

5585 SERIES REFLEX® 15" MINIBAR



CA, CB & CR only

A & CA only



12-24V | 4.6A | 18 FP

2.5" H x 15" L x 9" D | 63mm H x 381mm L x 229mm D

MODEL	MOUNT	TYPE	LENS COLOR	LED COLOR OPTIONS
5585A	4 Bolt, MG or VM	Single	<input checked="" type="checkbox"/> A	<input checked="" type="checkbox"/> A
5585CX	4 Bolt, MG or VM	Single	<input type="checkbox"/> C	<input checked="" type="checkbox"/> A <input checked="" type="checkbox"/> B <input type="checkbox"/> C <input checked="" type="checkbox"/> G <input checked="" type="checkbox"/> R
5585CXX	4 Bolt, MG or VM	Split	<input type="checkbox"/> C	<input checked="" type="checkbox"/> AB <input checked="" type="checkbox"/> AC <input checked="" type="checkbox"/> AG <input checked="" type="checkbox"/> AR <input checked="" type="checkbox"/> RB
5585CXX	4 Bolt or MG	Split	<input type="checkbox"/> C	<input checked="" type="checkbox"/> BW <input checked="" type="checkbox"/> GW

Replace "X" with **A** = Amber, **B** = Blue, **C** = Clear, **G** = Green, **R** = Red, **W** = White | Add "-MG" mounting extension to end of model for magnet mount
Add "-VM" mounting extension to end of model for vacuum-magnet mount | Add "-HBT" mounting extension to end of model for high-bond tape mount

DESIGN FEATURES

- 8 LED reflector modules, each containing 3 LEDs, provide high-intensity light output
- Sync-capable (permanent mount only)
- Cigarette plug with on/off and flash pattern selection switch (vacuum-magnet & magnet only)

5587 SERIES REFLEX® 15" MINIBAR



CA & CB only

A & CA only



12-24V | 4.6A | 18 FP

2.5" H x 15" L x 9" D | 63mm H x 381mm L x 229mm D

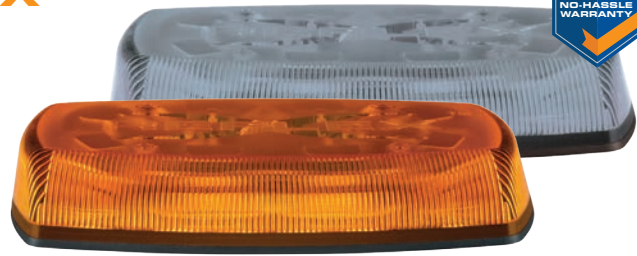
MODEL	MOUNT	TYPE	LENS COLOR	LED COLOR OPTIONS
5587A	4 Bolt, MG or VM	Single	<input checked="" type="checkbox"/> A	<input checked="" type="checkbox"/> A
5587CA	4 Bolt, MG or VM	Single	<input type="checkbox"/> C	<input checked="" type="checkbox"/> A
5587CAX	4 Bolt, MG or VM	Split	<input type="checkbox"/> C	<input checked="" type="checkbox"/> AB <input checked="" type="checkbox"/> AC

Replace "X" with **B** = Blue, **C** = Clear | Add "-MG" mounting extension to end of model for magnet mount
Add "-VM" mounting extension to end of model for vacuum-magnet mount

DESIGN FEATURES

- 8 LED reflector modules, each containing 3 LEDs, provide high-intensity light output
- Sync-capable (permanent mount only)
- Cigarette plug with on/off and flash pattern selection switch (vacuum-magnet & magnet only)

5580 SERIES REFLEX® 15" MINIBAR



12-24V | 2.7A | 18 FP

2.5" H x 15" L x 9" D | 63mm H x 381mm L x 229mm D

MODEL	MOUNT	TYPE	LENS COLOR	LED COLOR
5580A	4 Bolt, MG, VM or HBT	Single	■ A	■ A
5580CA	4 Bolt, MG, VM or HBT	Single	□ C	■ A

Add "-MG" mounting extension to end of model for magnet mount | Add "-VM" mounting extension to end of model for vacuum-magnet mount | Add "-HBT" mounting extension to end of model for high-bond tape mount

DESIGN FEATURES

- 8 LED reflector modules, each containing 3 LEDs, provide high-intensity light output
- Sync-capable (permanent mount only)
- Cigarette plug with on/off and flash pattern selection switch (vacuum-magnet & magnet only)

DUOBEAM™ SERIES 10" MINIBAR



12V | 2.0A (21-DB) 6.4A (27-DB) | 19 FP

3.3" H x 10.3" L x 10.3" D | 83mm H x 261mm L x 261mm D

MODEL	MOUNT	TYPE	LENS COLOR	LED COLOR
21-DB001-E	4 Bolt	Single	■ A	■ A
21-DB003-E	4 Bolt	Single	□ C	■ A
27-DB001-E	4 Bolt	Single	■ A	■ A
27-DB003-E	4 Bolt	Single	□ C	■ A

DESIGN FEATURES

- Standard lightbar mounting
- 3 mounting options
- 15' cable
- Additional color options

5280 SERIES ROTOLED™ LED HYBRID



12-24V | 3.2A | 75 FPM OR 125 FPM

5.8" H x 13.3" L x 6.3" D | 146mm H x 337mm L x 160mm D

MODEL	MOUNT	LENS COLOR	LED COLOR
5280A	4 Bolt or MG	<input checked="" type="checkbox"/> A	<input type="checkbox"/> C

Add "-MG" mounting extension to end of model for magnet mount

DESIGN FEATURES

- No gears, brushes, or bulbs to wear out
- LED optics produce intense rotating beam
- UV hard coated lens reduces abrasion, cracking and fading

MICROBAR & MINIBAR ACCESSORIES



LENSES A = Amber, C = Clear



EZ5507LA
EZ5507LC
USED WITH 5587/5597



R5545LA
R5545LC
USED WITH 5545/5550



R5500LA
R5500LC
USED WITH 5580/5585



R5590LA
R5590LC
USED WITH 5590



ER2127LA
ER2127LC
USED WITH DUOBEAM

LIGHT SOURCE COMPONENTS



EZ21IF4X
FRONT/REAR TR4 LED
MODULE - INDEPENDENT
FLASHING (A, B, G, R, W)
USED WITH DUOBEAM SERIES



EZ21IF6X
CORNER TR6 LED
MODULE - INDEPENDENT
FLASHING (A, B, G, R, W)
USED WITH DUOBEAM SERIES



EZ27IF8SX
FRONT/REAR REF8 LED
MODULE - STEADY BURN (A,
B, R, W)
USED WITH DUOBEAM SERIES



EZ27IF12X
FRONT/REAR REF12 LED
MODULE - INDEPENDENT
FLASHING (A, B, R, W)
USED WITH DUOBEAM SERIES

CABLES & PLUGS



R5500CP
15' CIGARETTE CORD & PLUG
USED WITH 5500 SERIES

DOMES CLIPS



EZ2127LC
LENS RETAINING CLIP
USED WITH DUOBEAM SERIES

MICROBAR & MINIBAR ACCESSORIES



SWITCHES & CONTROLS



EZ2127SB
SWITCH BOX - 3 LEVEL
SLIDE, 6 SWITCH 12V
USED WITH ALL BEACONS



A9000
SWITCHBOX -
6 SWITCH 12V
USED WITH ALL MINIBARS



A9891
ILLUMINATED
12V-AMBER-SPST
USED WITH ALL BEACONS



A9893
SWITCH PANEL -
SINGLE SLOT
(EXCLUDES SWITCH)
USED WITH A9891



A9904
BRACKET
MOUNTING KIT
USED WITH A9901



A9905SW
ON/OFF & FLASH
PATTERN SWITCHES
USED WITH ALL BEACONS



A9901
ILLUMINATED 12V
USED WITH ALL BEACONS



A9902
BRACKET -
END SECTION
USED WITH A9901



A9903
BRACKET -
CENTER SECTION
USED WITH A9901



EZ3710
LIGHTHEAD PROGRAMMER
12V | 24A MAX
USED WITH 5545 & 5550

MOUNTING HARDWARE



A5545VMK
VACUUM-MAGNET
MOUNT KIT
USED WITH 5550 & 5545



A5500VMK
VACUUM-MAGNET
MOUNT KIT
USED WITH 5500 SERIES



EZ5500HBT
HIGH BOND TAPE KIT
USED WITH 5580, 5585, 5587,
5590, 5597



EZ6000HBT
HIGH BOND TAPE KIT
USED WITH 5550, 5545 SERIES



EZ21DBPM
PYLON MOUNT KIT
USED WITH DUOBEAM SERIES



EZ21DBMM
MIRROR MOUNT KIT
USED WITH DUOBEAM SERIES



EZ21DBMG
MAGNET MOUNT KIT
USED WITH DUOBEAM SERIES



A2127HRMK
HEADACHE RACK
BRACKET
USED WITH DUOBEAM SERIES



A2127FT
STANDARD FEET KIT
USED WITH DUOBEAM SERIES



EZ5500BKT
MOUNTING BRACKET
USED WITH 5500 SERIES



EZ1000W-FL
3RD BRAKELIGHT
PLATFORM, LED
FOR F150, F250, F350
USED WITH ALL MINIBARS



EZ1000B-FL
3RD BRAKELIGHT
PLATFORM, LED
FOR F150, F250, F350
USED WITH ALL MINIBARS



EZ1001W-FH
3RD BRAKELIGHT
PLATFORM, HALOGEN
FOR F150, F250, F350
USED WITH ALL MINIBARS



EZ1001B-FH
3RD BRAKELIGHT
PLATFORM, HALOGEN
FOR F150, F250, F350
USED WITH ALL MINIBARS



EZ2000HBT
SELF-ADHESIVE, SINGLE
USE MAGNETIC
MOUNTING PLATE
USED WITH ALL MINIBARS
(2 PLATES)



GIVE
DIRECTIONAL
WITH **CLARITY**

DIRECTIONALS



FEATURED DIRECTIONAL

ED92 15AW - COMBO LIGHT





FEATURED DIRECTIONAL
ED3760AW - 72" LED RUNNING BOARD LIGHT



DIRECTIONALS

WHAT ARE THE OPTIONS? COLOR COMBINATIONS

SINGLE-COLOR

Only one color illuminates

SPLIT-COLOR

Two colors illuminate individually or simultaneously, half of the lighthead shows at a time

DUAL-COLOR

Two colors illuminate individually, the lighthead is fully illuminated with each color

TRI-COLOR

Three colors illuminate individually, the lighthead is fully illuminated with each color

ED9215 SERIES COMBO WORKLIGHT AND WARNING LIGHT



12-24V | 3.3A | 69 FP

3.2" H x 13.6" L x 2.7" D | 81mm H x 346mm L x 68mm D

MODEL	TYPE	LUMENS (RAW)	ILLUMINATION COLOR OPTIONS
ED9215XX	Dual	2,350	AW BW RB RW

Replace "X" with **A** = Amber, **B** = Blue, **R** = Red, **W** = White

DESIGN FEATURES

- 5,000 calculated lumens
- Combines powerful worklight with 135° warning light in a single unit
- 12 bright white LEDs in the center portion for scene illumination with steady-burn capability
- 24 high performance dual-color LEDs located on the outer portions for warning
- Includes 4 LEDs, 45° dual-color HIDE-A-LED™ in each side improves visibility at intersections
- Aluminum housing with channels for versatile mounting options, brackets included
- Sync-capable with up to 8 devices

ED3760 SERIES

RUNNING BOARDS, PUSH BUMPERS, TAILGATES



12V | DUAL-COLOR | 32 FP

0.6" H x 2.0" D | 16mm H x 53mm D

MODEL	WIRE EXIT	LENGTH	AMPS	ILLUMINATION COLOR
ED3724BW-L	Left	25.3" 642 mm	0.3	BW
ED3724BWRW-L	Left	25.3" 642 mm	0.3	BWRW
ED3736BWRW-L	Left	37.3" 947 mm	0.6	BWRW
ED3760XX-L / -R	Left or Right	61.3" 1557 mm	0.6	AW BW RW
ED3760BWRW-L / -R	Left or Right	61.3" 1557 mm	0.6	BWRW
ED3772XX-L / -R	Left or Right	73.3" 1862 mm	1.1	AW BW RW
ED3772BWRW-L / -R	Left or Right	73.3" 1862 mm	1.1	BWRW

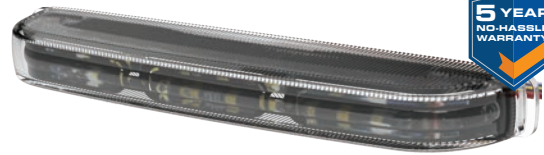
Replace "X" with **A** = Amber, **B** = Blue, **R** = Red, **W** = White | White is always the secondary color | Choose "L" for left side wire exit or "R" for right side wire exit

DESIGN FEATURES

- Each 12" section offers dual-color
- 32 flash patterns including steady-burn color 1, color 2 and traffic advisor
- Universal surface mount capability
- Powder coated aluminum frame
- Polycarbonate durable lens

ED5051 SERIES

MULTI-MOUNT



12-24V | 0.7A (ED5051X) 0.6A (ED5051XX) | 18 FP (Single) 36 FP (Dual)

0.6" H x 5.4" L x 1.0" D | 15mm H x 136mm L x 27mm D
Mounting hole spacing: 3.54" | 90mm

MODEL	TYPE	ILLUMINATION COLOR OPTIONS
ED5051X	Single	A R W
ED5051XX	Dual	AB AR AG AW RB

Replace "X" with **A** = Amber, **B** = Blue, **G** = Green, **R** = Red, **W** = White

DESIGN FEATURES

- 3 mounting options included to accommodate a variety of vehicle surfaces
- 9 high-intensity LEDs (single-color), 18 high-intensity LEDs (dual-color)
- Sync-capable and dimmable
- Polycarbonate housing and lens

ED3700 SERIES SURFACE MOUNT



12-24V | 0.4A | 21 FP

1.4" H x 3.7" L x 0.6" D | 36mm H x 93mm L x 16mm D
Mounting hole spacing: 3.05" | 78mm

MODEL	TYPE	ILLUMINATION COLOR OPTIONS
ED3703X	Single	A B C G R
ED3703A-DEL4	Single, Delphi 4-Pin Connector	A

12-24V | 0.7A | 30 FP Single 22 FP Split 70 FP Dual (ED3704, ED3744)
12-24V | 1.2A | 62 FP Single 38 FP Split (ED3788)
12-24V | 1.2A | 30 FP Single 22 FP Split 70 FP Dual (ED3789)
 1.4" H x 4.7" L x 0.6" D | 36mm H x 120mm L x 16mm D (ED3704, ED3744)
 2.4" H x 4.7" L x 0.6" D | 61mm H x 120mm L x 16mm D (ED3788, ED3789)
 Mounting hole spacing: 4.12" | 105mm



MODEL	TYPE	ILLUMINATION COLOR OPTIONS
ED3704X	Single	A B C G R
ED3704XX	Split	AB AC AR BC RB RC
ED3744XX	Dual	AB AC AR BC RB RC
ED3788X	Single, Double Stack	A B C R
ED3788XX	Split, Double Stack	AB AC BC RA RB RC
ED3789XX	Dual, Double Stack	AC BA BC RA RB RC

12-24V | 0.9A | 30 FP Single 22 FP Split 70 FP Dual
 1.4" H x 6.2" L x 0.6" D | 36mm H x 158mm L x 16mm D
 Mounting hole spacing: 5.61" | 143mm



MODEL	TYPE	ILLUMINATION COLOR OPTIONS
ED3705X	Single	A B C G R
ED3705XX	Split	AB AC AR BC RB RC
ED3755XX	Dual	AB AC AR BC RB RC

Replace "X" with A = Amber, B = Blue, C = Clear, G = Green, R = Red

DESIGN FEATURES

- Steady-burn
- Controllable flash pattern output
- Dimmable
- Sync-capable
- Same mounting hole pattern and brackets as the 3700 series

ED3777 SERIES MULTI-MOUNT



A, B & R only

single-color only

A, B & R only



5 YEAR
NO-HASSLE
WARRANTY

12-24V | 1.3A (Single) 1.4A (Dual) | 29FP (Single) 69FP (Dual)

1.2" H x 5.1" L x 1.4" D | 30mm H x 130mm L x 37mm D
Mounting hole spacing: 4.74" | 121mm

MODEL	TYPE	ILLUMINATION COLOR OPTIONS
ED3777X	Single	A B G R W
ED3777XX	Dual	AB AG AR AW BW RB RW

Replace "X" with A = Amber, B = Blue, G = Green, R = Red, W = White

DESIGN FEATURES

- 180° warning with worklight and puddle light
- 6 LEDs per color
- Sync-capable
- Aluminum housing, polycarbonate lens

ED3779 SERIES MULTI-MOUNT



A, B & R only

A, B & R only



12-24V | 1.7A | 29FP (Single) 69FP (Dual)

3.4" H x 5.1" L x 1.4" D | 86mm H x 130mm L x 36mm D
Mounting hole spacing: 4.74" | 121mm

MODEL	TYPE	ILLUMINATION COLOR OPTIONS
ED3779X	Single	A R
ED3779AX	Dual	AB AG AR AW

Replace "X" with B = Blue, C = Clear, G = Green, R = Red

DESIGN FEATURES

- 6 LEDs per color
- Sync-capable
- Aluminum housing, polycarbonate lens
- 180° warning with worklight

ED3701 / ED3702 SERIES SURFACE MOUNT



12-24V | **0.8A** (ED3701X, ED3701XX) **1.25A** (ED3702XX) **1.1A** (ED3702XXX)

29 FP (Single / Split) **69 FP** (Dual) **135 FP** (Tri)

1.3" H x 4.8" L x 0.6" D | 34mm H x 123mm L x 14mm D

MODEL	TYPE	ILLUMINATION COLOR OPTIONS
ED3701X	Single	A B C G R
ED3701XX	Split	AB AC AG AR BC RB RC
ED3702XX	Dual	AB AC AG AR BC RB RC
ED3702XXX	Tri	AGW BAW RAW RBA

Replace "X" with **A** = Amber, **B** = Blue, **C** = Clear, **G** = Green, **R** = Red, **W** = White

DESIGN FEATURES

- High-intensity LEDs provide exceptional warning
- Ultra low-profile surface mount
- Sync-capable
- Die-cast base with polycarbonate lens

ED3706 / ED3712 SERIES MULTI-MOUNT



12-24V | **0.9A** (Single / Split / Tri) **1.25A** (Dual) | **29 FP** (Single / Split) **69 FP** (Dual) **135 FP** (Tri)

1.2" H x 5.2" L x 0.8" D | 32mm H x 132mm L x 20mm D

Mounting hole spacing: 4.74" | 121mm

MODEL	TYPE	ILLUMINATION COLOR OPTIONS
ED3706X	Single	A B C G R
ED3706XX	Split	AB AC AG AR RB
ED3712XX	Dual	AB AC AG AR BC RB RC
ED3712XXX	Tri	AGW RBA RBW

Replace "X" with **A** = Amber, **B** = Blue, **C** = Clear, **G** = Green, **R** = Red, **W** = White

DESIGN FEATURES

- High-intensity LEDs provide exceptional warning
- Sync-capable
- Aluminum housing, polycarbonate lens
- Four mounting options (hardware included)

ED3766 SERIES SURFACE MOUNT



12-24V | 0.8A | 69 FP (Dual) 135 FP (Tri)
 1.5" H x 6.4" L x 1.2" D | 38mm H x 163mm L x 30mm D
 Mounting hole spacing: 5.54" | 141mm

MODEL	TYPE	ILLUMINATION COLOR OPTIONS
ED3766XX	Dual	AB AC AG AR RB
ED3766XXX	Tri	AGW BAW RAW RBW

Replace "X" with **A** = Amber, **B** = Blue, **C** = Clear, **G** = Green, **R** = Red, **W** = White

DESIGN FEATURES

- High-intensity LEDs provide exceptional warning
- 6 LEDs per color
- Sync-capable
- Aluminum housing, polycarbonate lens

3510 SERIES SURFACE MOUNT



12-24V | 0.70A | 16 FP
 1.1" H x 3.3" L x 0.4" D | 28mm H x 84mm L x 10mm D
 Mounting hole spacing: 3.00" | 76mm

MODEL	TYPE	ILLUMINATION COLOR OPTIONS
3510X	Single	A B C G R

Replace "X" with **A** = Amber, **B** = Blue, **C** = Clear, **G** = Green, **R** = Red

DESIGN FEATURES

- Twenty-four 1-watt high-intensity LEDs provide exceptional warning
- Sync-capable with additional 3510s and Hide-A-LEDs
- In-line waterproof driver module allows for premium functionality and compact size
- UV stabilized polycarbonate lens and pre-wired 9' cable

3811 / 3861 SERIES SURFACE / GROMMET MOUNT



12-24V | 0.4A | 7 FP

2.1" H x 6.1" L x 1.3" D | 53mm H x 155mm L x 34mm D (3811)
 2.2" H x 6.5" L x 1.2" D | 56mm H x 165mm L x 30mm D (3861)
 Mounting hole spacing: 5.00" | 127mm



MODEL	MOUNT	TYPE	ILLUMINATION COLOR OPTIONS
3811X	Surface	Single	<input type="checkbox"/> A <input type="checkbox"/> B <input type="checkbox"/> C <input type="checkbox"/> R
3811XX	Surface	Dual	<input type="checkbox"/> AC
3861X	Grommet	Single	<input type="checkbox"/> A <input type="checkbox"/> B <input type="checkbox"/> C <input type="checkbox"/> R
3861XX	Grommet	Dual	<input type="checkbox"/> AC

Replace "X" with A = Amber, B = Blue, C = Clear, R = Red

DESIGN FEATURES

- Tough, clear polycarbonate housing with encapsulated electronics
- Sync-capable with additional 3811/3861
- Grommet-mount versions fit standard oval rear lighting grommet

3945 / 3965 SERIES GROMMET MOUNT



12-24V | 0.5A | 8 FP

5.4" Diameter x 2.2" D | 137mm Diameter x 56mm D (3945)
 3.3" H x 7.5" L x 2.1" D | 84mm H x 190mm L x 53mm D (3965)



MODEL	SHAPE	TYPE	LENS	ILLUMINATION COLOR OPTIONS
3945X	●	Single	<input type="checkbox"/> C	<input type="checkbox"/> A <input type="checkbox"/> B <input type="checkbox"/> C <input type="checkbox"/> R
3965X	●	Single	<input type="checkbox"/> C	<input type="checkbox"/> A <input type="checkbox"/> B <input type="checkbox"/> C <input type="checkbox"/> R
3965AA	●	Single	<input type="checkbox"/> A	<input type="checkbox"/> A
3965XX	●	Split	<input type="checkbox"/> C	<input type="checkbox"/> AB <input type="checkbox"/> AC <input type="checkbox"/> AG

Replace "X" with A = Amber, B = Blue, C = Clear, G = Green, R = Red

DESIGN FEATURES

- High output LEDs offer low maintenance, long life and low current consumption
- Ultrasonically sealed housing
- Fits in standard oval or round rear lighting grommet (included)
- Vibration and shock-resistant construction

3910 SERIES SURFACE / GROMMET MOUNT



12V | 0.7A | 15 FP

3.2" H x 5.0" L x 0.3" D | 81mm H x 128mm L x 9mm D (3910)
 2.3" H x 6.4" L x 0.3" D | 58mm H x 164mm L x 9mm D (3911)
 3.3" H x 7.5" L x 1.0" D | 83mm H x 190mm L x 25mm D (3920)
 Mounting hole spacing: 4.60" | 117mm (3910)
 6.01" | 153mm (3911)

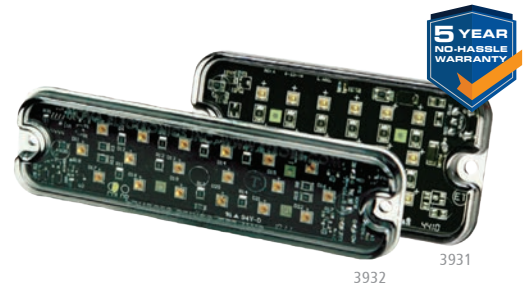
MODEL	SHAPE	MOUNT	TYPE	ILLUMINATION COLOR OPTIONS
3910X		Surface	Single	A R
3911X		Surface	Single	A R
3911R-BW		Surface	Bracketlight	R
3920X		Grommet	Single	A R

Replace "X" with **A** = Amber, **R** = Red

DESIGN FEATURES

- Extremely thin surface-mount design
- Simple three-wire hookup

3931 SERIES SURFACE MOUNT



12V | 0.9A | 16 FP

1.9" H x 3.8" L x 0.3" D | 48mm H x 97mm L x 9mm D (3931)
 1.5" H x 5.1" L x 0.3" D | 38mm H x 129mm L x 9mm D (3932)
 Mounting hole spacing: 3.39" | 86mm (3931)
 4.64" | 118mm (3932)

MODEL	SHAPE	TYPE	ILLUMINATION COLOR OPTIONS
3931X		Single	A B C R
3932X		Single	A B C R

Replace "X" with **A** = Amber, **B** = Blue, **C** = Clear, **R** = Red

DESIGN FEATURES

- Extremely thin surface-mount design
- Simple three-wire hookup
- Sync-capable

STICK-A-LED™ SERIES SELF-ADHESIVE MOUNT



12-24V | **0.7A** (ED0002) **0.9A** (ED0004)

1.0" H x 2.4" L x 0.4" D | 26mm H x 60mm L x 11mm D (ED0002)
1.6" H x 2.1" L x 0.4" D | 41mm H x 54mm L x 11mm D (ED0004)

MODEL	SHAPE	MOUNT	TYPE	ILLUMINATION COLOR OPTIONS
ED0002X		Surface	Single	A B C R
ED0004X		Surface	Single	A B C R

Replace "X" with A = Amber, B = Blue, C = Clear, R = Red

DESIGN FEATURES

- Three or six 1-watt LEDs
- Features quad flash pattern
- Self-adhesive peel-and-stick backing
- No fasteners needed; only a single wiring hole and simple two-wire connection
- Tough polycarbonate base and lens

ED0016 SERIES MAGNET MOUNT



0.3A | **115 FPM**

3.9" H x 6.3" L x 1.9" D | 100mm H x 160mm L x 49mm D

MODEL	TYPE	ILLUMINATION COLOR
ED0016A	Single	A
ED0016R	Single	R

DESIGN FEATURES

- High-strength neodymium magnet
- Flashing and steady burn modes
- Powered by 4 AA batteries (Rechargeable batteries are NOT recommended)

ED9040 SERIES HIDE-A-LED™ CONCEALED WARNING



12-24V | 1.2A (ED9040X) 0.6A (ED9040XX) | 29 FP (Single) 69 FP (Dual)

1.3" H x 1.3" L x 1.4" D | 34mm H x 34mm L x 37mm D
Mounting hole spacing: 3.54" | 90mm

MODEL	TYPE	ILLUMINATION COLOR OPTIONS
ED9040X	Single	A B G R W
ED9040XX	Dual	AG AW BA BW RA RB RW

Replace "X" with A = Amber, B = Blue, G = Green, R = Red, W = White

DESIGN FEATURES

- Slim low-profile design with 6 powerful LEDs for a bright warning light
- All-in-module: all controls imbedded in the head light, avoiding a LED flash controller
- Optimized lens and optical, maximizing light beam in multiple single or dual colors variations
- Discreet flush mount, install virtually anywhere on vehicle surface - insertable in a 1" hole with 10" pigtail cable
- Steady burn and dimmable
- Sync-capable with: ED3700, ED3701/ED3702, ED3706/ED3712, ED3766, and ED3777/ED3779 Series

9014 SERIES HIDE-A-LED™ CONCEALED WARNING



12-24V | 0.9A | 16 FP

0.9" H x 1.5" Diameter | 22mm H x 38mm Diameter (lighthead)
Mounting hole spacing: 1.3" | 33mm (lighthead)
1.8" | 46mm (bezel)

MODEL	MOUNT	TYPE	ILLUMINATION COLOR OPTIONS
9014X	1" Hole, Surface / 2 Bolt	6 LED, 1 Head	A B C R

Replace "X" with A = Amber, B = Blue, C = Clear, R = Red

DESIGN FEATURES

- Six 1-watt high-intensity LEDs provide exceptional warning
- Head/tail light or surface mountable using included bezel
- Multiple heads are sync-capable (simultaneous or alternating operation)
- In-line waterproof driver module eliminates need for a remote power supply
- UV-stabilized polycarbonate lens, nickel-plated housing and 9' cable

ED0010 SERIES HIDE-A-LED™ CONCEALED WARNING



12-24V | 0.9A | 16 FP

1.3" H x 1.0" Diameter | 33mm H x 25mm Diameter (ED0010)
 2.4" H x 1.0" Diameter | 60mm H x 25mm Diameter (ED0011)
 Mounting hole spacing: 0.9" | 23mm

MODEL	MOUNT	TYPE	ILLUMINATION COLOR OPTIONS
ED0010X	1/2" Hole, Self-Adhesive / 2 Bolt	2 LED, 3/4" Shaft	■ A ■ B C ■ R
ED0011X	1/2" Hole, Self-Adhesive / 2 Bolt	2 LED, 2" Shaft	■ A ■ B C ■ R

Replace "X" with A = Amber, B = Blue, C = Clear, R = Red

DESIGN FEATURES

- Two 3-watt high-intensity LEDs provide exceptional warning
- Sync-capable (simultaneous or alternating operation)
- Quick and easy 1/2" hole installation, peel-and-stick mounting (can be secured with screws)
- In-line waterproof driver module eliminates the need for a remote power supply
- Nickel-plated aluminum housing and 9' cable

9031 SERIES HIDE-A-LED™ CONCEALED WARNING



12V (Amber) 12-24V (Clear) | 0.5A | 16 FP

1.3" H x 1.1" Diameter | 34mm H x 28mm Diameter
 Mounting hole spacing: 1.3" | 33mm

MODEL	MOUNT	TYPE	ILLUMINATION COLOR OPTIONS
9031X	1" Hole, Pop-In	6 LED, 1 Head	■ A ■ B C ■ R
9022XX	1" Hole, Pop-In	4 LED, 2 Head	■ AA ■ BB CC ■ RR

Replace "X" with A = Amber, B = Blue, C = Clear, R = Red

DESIGN FEATURES

- Four 1-watt high-intensity LEDs per head provide exceptional warning
- Wide-angle light dispersion maximizes light output
- Multiple heads are sync-capable (simultaneous or alternating operation)
- In-line waterproof driver module eliminates the need for a remote power supply
- UV-stabilized polycarbonate lens, nickel-plated housing and 9' cable

9011 SERIES

HIDE-A-LED™ CONCEALED WARNING



12V (9011, 9021) **12-24V** (9013) | **1.0A** (9011, 9021) **1.3A** (9013) | **16 FP**

1.3" H x 1.5" Diameter | 33mm H x 38mm Diameter
 Mounting hole spacing: 1.3" | 33mm
 1.8" | 46mm

MODEL	MOUNT	TYPE	ILLUMINATION COLOR OPTIONS
9011X	1" Hole, 2 Bolt	4 LED, 1 Head	■ A ■ B ■ C ■ R
9013X	1" Hole, 2 Bolt	6 LED, 1 Head	■ A ■ B ■ C ■ R
9013XX	1" Hole, 2 Bolt	6 LED, 1 Head	■ AC ■ BR
9021XX	1" Hole, 2 Bolt	4 LED, 2 Head	■ AA ■ BB ■ CC ■ RR <small>solid color each head</small>

Replace "X" with **A** = Amber, **B** = Blue, **C** = Clear, **R** = Red

DESIGN FEATURES

- Four 1-watt high-intensity LEDs provide exceptional warning (9011), Six high-intensity LEDs provide exceptional warning (9013)
- Wide angle light dispersion maximizes light output
- Multiple heads are sync-capable (simultaneous or alternating operation)
- In-line waterproof driver module eliminates the need for a remote power supply
- UV-stabilized polycarbonate lens, nickel-plated housing and 9' cable

DIRECTIONAL ACCESSORIES



MOUNTING HARDWARE



3702-BKBZ
BLACK BEZEL
USED WITH ED3701/02



3702-CHBZ
CHROME BEZEL
USED WITH ED3701/02



A3510BZC
CHROME BEZEL
USED WITH 3510



A3510L
UNIVERSAL BRACKET
USED WITH 3510



A3510MA
MULTI-ANGLE BRACKET
USED WITH 3510



A3860ADPT
GROMMET ADAPTER
USED WITH 3800 SERIES



A3930BZB
BLACK BEZEL
USED WITH 3930



A3930BZC
CHROME BEZEL
USED WITH 3930



A3931BZC
CHROME BEZEL
USED WITH 3931



A3931BZB
BLACK BEZEL
USED WITH 3931



A3932BZC
CHROME BEZEL
USED WITH 3932



A3932BZB
BLACK BEZEL
USED WITH 3932



A9894
ROUND GROMMET BOX
USED WITH 3921 & 3945



A9895
OVAL GROMMET BOX
USED WITH 3860, 3920 & 3965



EZ3703GBKT
GRILLE BRACKET
USED WITH ED3703



EZ3703LBKT
90° L BRACKET
USED WITH ED3703



EZ3704GBKT
GRILLE BRACKET
USED WITH ED3704/44,
ED3701/02



EZ3703LICB
LICENSE PLATE BRACKET
USED WITH ED3703



EZ3704GBKT-F
GRILLE BRACKET,
LOW PROFILE
USED WITH ED3704/44,
ED3701/02



EZ3704LBKT
90° L BRACKET
USED WITH ED3704/44,
ED3701/02



EZ3705GBKT
GRILLE BRACKET
USED WITH ED3705/55



EZ3705LBKT
90° L BRACKET
USED WITH ED3705/55



EZ3706-GMT
OVAL RUBBER GROMMET
USED WITH ED3706/12, ED3777



EZ3706LPBKTH
LICENSE PLATE BRACKET
USED WITH ED3703, ED3704/44,
ED3701/02, ED3706/12, ED3777



EZ3706-WDG
RUBBER WEDGE KIT
4 PIECE, 5° EACH
USED WITH ED3706/12, ED3777



EZ3760-C
BRACKET FOR CHEVY
SILVERADO 1500, 2500,
3500 & GMC SIERRA
(UP TO 2019)
USED WITH ED3760 & ED3772



EZ3760-D
BRACKET FOR DODGE
RAM 1500, 2500, 3500
(2015+)
USED WITH ED3760 & ED3772



EZ3760-F
BRACKET FOR FORD
F150, F250, F350
(2015+)
USED WITH ED3760 & ED3772



EZ3766L
UNIVERSAL BRACKET
USED WITH ED3766



EZ3779-LBKT
90° L BRACKET
USED WITH ED3779



MOUNTING HARDWARE



EZD3788LBKT
90° L BRACKET
USED WITH ED3788 & ED3789



EZ3779CHMBZ
CHROME BEZEL
USED WITH ED3779



EZ9040LBKT
90° L BRACKET
USED WITH ED9040



EZD3703BLBZ
BLACK BEZEL
USED WITH ED3703



EZD3703CHMBZ
CHROME BEZEL
USED WITH ED3703



EZD3703RUBZ
RUBBER GROMMET
USED WITH ED3703



EZD3704BLBZ
BLACK BEZEL
USED WITH ED3704 & ED3744



EZD3704CHMBZ
CHROME BEZEL
USED WITH ED3704 & ED3744



EZD3704RUBZ
RUBBER GROMMET
USED WITH ED3704 & ED3744



EZD3705BLBZ
BLACK BEZEL
USED WITH ED3705 & ED3755



EZD3705CHMBZ
CHROME BEZEL
USED WITH ED3705 & ED3755



EZD3706RUBZ
RUBBER GROMMET
USED WITH ED3705 & ED3755



EZD3788CHMBZ
CHROME BEZEL
USED WITH ED3788 & ED3789



R2140GR
ROUND RUBBER GROMMET
USED WITH A9894, 3921 & 3945



R2160GO
OVAL RUBBER GROMMET
USED WITH A9895, 3860, 3920, 3965

SWITCHES & CONTROLS



A9000
SWITCHBOX -
6 SWITCH 12V
USED WITH ALL DIRECTIONALS



A9891
ILLUMINATED
12V-AMBER-SPST
USED WITH ALL DIRECTIONALS



A9893
SWITCH PANEL -
SINGLE SLOT
(EXCLUDES SWITCH)
USED WITH A9891



A9901
ILLUMINATED 12V
USED WITH ALL DIRECTIONALS



A9902
BRACKET -
END SECTION
USED WITH A9901



A9903
BRACKET -
CENTER SECTION
USED WITH A9901



A9904
BRACKET
MOUNTING KIT
USED WITH A9901



A9905SW
ON/OFF & FLASH
PATTERN SWITCHES
USED WITH ALL DIRECTIONALS



EZ2127SB
SWITCH BOX - 3 LEVEL
SLIDE, 6 SWITCH 12V
USED WITH ALL DIRECTIONALS



EZ3710
LIGHTHEAD PROGRAMMER
12V | 24A MAX
USED WITH ED3701/02, ED3706/12,
ED3766, ED3777/79, ED5051, ED9040,
ED3700 SERIES



SAFETY DIRECTOR™

**FEATURED
SAFETY DIRECTOR™**

ED3307SA
DEFINITIVE TRAFFIC DIRECTION





ROUTING DONE RIGHT

SAFETY DIRECTOR™





3400 SERIES COMPACT HIGH-INTENSITY WARNING



3410CB
Included

12V | 1.6A | 9 FP

1.9" H x 48.1" L x 2.5" D | 48mm H x 1222mm L x 63mm D

MODEL	CABLE LENGTH	ILLUMINATION COLOR
3410A	15' 4.6m	■ A
3435A	35' 9.1m	■ A
3455A	55' 16.8m	■ A

DESIGN FEATURES

- Extruded aluminum housing with polycarbonate lens
- 8 reflective modules with 6 LEDs
- Includes signal bar, controller, cable and 20A auxiliary relay

ED3300 SERIES HIGH-INTENSITY WARNING



3410CB
Included

12-24V | 1.6A | 9 FP

2.9" H x 48.9" L x 3.1" D | 74mm H x 1242mm L x 78mm D

MODEL	CABLE LENGTH	ILLUMINATION COLOR
ED3315A	15' 4.6m	■ A
ED3335A	35' 9.1m	■ A
ED3355A	55' 16.8m	■ A

DESIGN FEATURES

- Extruded aluminum housing with polycarbonate lens
- 8 reflective modules with 20 LEDs
- Includes signal bar, controller, cable and 20A auxiliary relay



37038AS SERIES NARROWSTIK™ HIGH OUTPUT DIRECTIONAL WARNING



12-24V | 4.0A | 32 FP

1.6" H x 28.9" L x 1.9" D | 40mm H x 734mm L x 49mm D (37038AS)
1.6" H x 46.1" L x 1.9" D | 40mm H x 1171mm L x 49mm D (37048AS)

MODEL	BAR LENGTH	CABLE LENGTH	ILLUMINATION COLOR
37038AS	28.9" 734mm	15' 4.6m	Orange A
37048AS	46.1" 1171mm	15' 4.6m	Orange A

DESIGN FEATURES

- High-output directional warning with the added benefits of low amp draw, maintenance free, and long-life LEDs
- Includes signal bar, in-cab rocker switch panel and cable

ED3307 SERIES DEFINITIVE TRAFFIC DIRECTION



12-24V | 2.8A | 35 FP

22.4" H x 53.8" L x 3.2" D | 569mm H x 1367mm L x 81mm D (ED3307A)
22.5" H x 28" L x 3.2" D | 571mm H x 711mm L x 81mm D (ED3307SA per arrow)

MODEL	CABLE LENGTH	TYPE	ILLUMINATION COLOR
ED3307A	18' 5.5m	Single Unit	Orange A
ED3307SA	18' 5.5m	Split Arrow	Orange A

DESIGN FEATURES

- Extruded aluminum housing with polycarbonate lens
- 16 high-powered 3811 LED modules
- ED3307CB Arrow controller included

SAFETY DIRECTOR™ ACCESSORIES



CONTROLLERS



ED3307CB
ARROW CONTROLLER
USED WITH ED3307 SERIES



3410CB
CONTROLLER
USED WITH 3400
AND ED3300

CABLE



R3307SACBL
EXTENSION CABLE:
30' (9.1M)
USED WITH ED3307 SERIES



**3410-15, 3410-35
3410-55**
REPLACEMENT CABLE: 15'(4.6M),
35'(10.7M), OR 55'(16.8M)
USED WITH 3400, ED3300 & ED3307
SERIES

MODULE



ER3300X
SAFETY DIRECTOR
(A, B, C, R)
USED WITH ED3300



FEATURED LIGHTBAR

21 SERIES - SAE CLASS I LED LIGHTBAR

LIGHTBARS





COMMAND ATTENTION



LIGHTBARS



12+ SERIES VANTAGE™

SLEEK, LOW PROFILE



Additional colors and custom configurations available.
■ A ■ B ■ C ■ G ■ R ■ AB ■ AC ■ AG ■ AR ■ BC ■ RB ■ RC

12-24V | 48 FP
 2.5" H x 11" D | 64mm H x 279mm D



EZ1202
Optional
Advanced Controller



EZ0006
Optional
Basic Controller

MODEL	LENGTH	MODULES	CHASSIS DIAGRAM
12-21205-E	24" 610mm	12 LED	
12-21169-E	36" 914mm	12 LED	
12-20004-E	48" 1219mm	16 LED, 2 Worklights, 2 Alley Lights	
12-20007-E	54" 1372mm	10 LED, 2 Worklights, 2 Stop-Tail-Turn	
12-20601-E	54" 1372mm	20 LED, Safety Director	
12-20006-E	60" 1524mm	16 LED, 2 Worklights, 2 Alley Lights, 2 Stop-Tail-Turn	

DESIGN FEATURES

- Lengths available: 24", 30", 36", 42", 48", 54", 60" and 72"
- Optional Integrated Safety Director™ (minimum 6 heads required)
- ICE Optics offer brighter appearance for better visibility
- Configurable with two to three days of lead time
- Standard black base, with optional white base
- Aluminum chassis, polycarbonate base and lens
- Twelve standard chassis configurations
- Optional basic (EZ0006) or advanced (EZ1202) controller



21 SERIES DELIVERS OFF-ANGLE PERFORMANCE



Additional colors and custom configurations available.

■ A
 ■ B
 ■ C
 ■ G
 ■ R
 ■ AB
 ■ AC
 ■ AG
 ■ AR
 ■ BC
 ■ RB
 ■ RC

12V | **31 FP** (Centrally Controlled)

2.1" H x 12.3" D | 53mm H x 312mm D

MODEL	LENGTH	MODULES	CHASSIS DIAGRAM
21-00003-E	22" 559mm	8 LED	
21-00004-E	47" 1196mm	14 LED	
21-00005-E	47" 1196mm	16 LED, 2 Worklights, 2 Alley Lights, Safety Director	
21-00009-E	52" 1320mm	16 LED, Safety Director	
21-00008-E	58" 1480mm	12 LED, 2 Worklights, 2 Stop-Tail-Turn	

DESIGN FEATURES

- Lengths available 22", 36", 44", 47", 52", 58", 69", 80" and 91"
- Low-profile chassis
- Integrated LED Safety Director™
- Aluminum chassis, polycarbonate base and lens
- Magnet mount available for 22" lightbars (EZ2122MG)
- Nine standard chassis configurations
- TIR optics



27 SERIES DUAL REFLECTOR TECHNOLOGY



Additional colors and custom configurations available.

■ A
 ■ B
 ■ C
 ■ G
 ■ R
 ■ AB
 ■ AC
 ■ AR
 ■ BC
 ■ RB
 ■ RC

12V | **31 FP** (Centrally Controlled)

2.7" H x 12.3" D | 53mm H x 312mm D

MODEL	LENGTH	MODULES	CHASSIS DIAGRAM
27-00003-E	22" 559mm	8 LED	
27-00004-E	47" 1196mm	14 LED	
27-00009-E	52" 1320mm	16 LED, Safety Director	
27-00007-E	58" 1480mm	10 LED, 2 Worklights, 2 Stop-Tail-Turn	

DESIGN FEATURES

- Lengths available 22", 44", 47", 52", 58", 69", 80" and 91"
- Aluminum chassis, polycarbonate base and lens
- Magnet mount available for 22" lightbars (EZ2122MG)
- Range of strap-mounting accessory kits
- 9 standard chassis configurations
- **Centrally Controlled (CC):** Added flexibility with up to seven, preset flash patterns, which are changed via wires instead of the individual light heads. Includes integrated Safety Director (configuration required), synchronized flash patterns, multi-color options, flashing alley and worklight.



LIGHTBAR ACCESSORIES

MOUNTING KITS



12 SERIES



21 / 27 SERIES

STRAP MOUNTS

Chevy Caprice 2010-2017	A1231RMK	
Chevy Silverado 2019+		A212713RMK*
Dodge Charger 2011-2020	A1231RMK	
Dodge Charger 2006-2010	A1229RMK	
Dodge Truck 1/2T 2009-2016, 3/4-1T 2010-2018	A1236RMK*	A212706RMK
Dodge Truck 1/2T 2002-2008, 3/4-1T 2003-2009	A1211RMK	A212707RMK
Ford Super Duty Truck 1999-2009	A1212RMK	A212705RMK
Ford Super Duty Truck 2017-2020	A1235RMK* / A1226RMK	A212701RMK
Ford Truck 1/2T 2017-2020	A1234RMK*	A212709RMK*
Ford Truck 1/2T 2009-2014	A1225RMK	A212710RMK
Ford Truck 1/2T 2004-2008	A1210RMK	
Ford Truck 1/2T 1997-2003	A1214RMK	
Ford Crown Victoria 1992-2012	A1213RMK	
Ford E-Series Van 1996-2014		A212702RMK
Ford Explorer 2012-2016		A212703RMK
Ford Explorer 2020 (Black)		A212712RMK*
Ford Explorer 2020 (White)		A212711RMK
Ford PPV/SUV 2013-2019	A1231RMK	
GM Truck 1/2T 2014-2019, 1T Tahoe/Yukon 2015-2019 Classi	A1237RMK*	A212708RMK
GM Truck 1/2T 2007-2013	A1227RMK	A212704RMK
GM Truck 1/2T 1998-2006, 1T Tahoe/Yukon 2007-2014	A1211RMK	A212707RMK
GM Van (Express/Savana) 2003-2014		A212702RMK
Toyota Tacoma 2005-2015	A1238RMK*	A212703RMK
Toyota Tundra 2007-2014	A1239RMK*	
Universal Gutter 48" -60"		A212702RMK

*Indicates paint finish is black. All other mounting kits are stainless steel.

54" lightbars recommended for full-size trucks

RACK MOUNT



A1032RMK
HEADACHE RACK BRACKET
USED WITH 12+ SERIES



A2127HRMK
HEADACHE RACK BRACKET
USED WITH 21/27 SERIES



A2127FT
STANDARD FEET KIT
USED WITH 21/27 SERIES



ER0002
STANDARD FEET KIT
USED WITH 12 SERIES

LIGHTBAR ACCESSORIES



LENSES



ER0003
END, 24" CLEAR
USED WITH 12+ SERIES



ER0004
CENTER, 6" CLEAR
USED WITH 12+ SERIES



EZ2101C - LOWER END
EZ2108C - LOWER CENTER, SHORT
EZ2111C - LOWER CENTER, MED
EZ2116C - LOWER CENTER, LONG
EZ21L22C - 22" LOWER
USED WITH 21 SERIES



EZ2701C - LOWER END
EZ2708C - LOWER CENTER, SHORT
EZ2711C - LOWER CENTER, MED
EZ27L22C - 22" LOWER
USED WITH 27 SERIES



EZ2127UX
UPPER END
REPLACE "X" WITH:
A, B, BLK, R, C
USED WITH 21/27 SERIES



EZ2127U22X
UPPER CENTER
REPLACE "X" WITH:
A, B, BLK, R, C
USED WITH 21/27 SERIES



EZ2127U8X - UPPER CENTER, SHORT
EZ2127U11X - UPPER CENTER, MED
EZ2127U16X - UPPER CENTER, LONG
REPLACE "X" WITH: A, B, BLK, R, C
USED WITH 21/27 SERIES

CONTROLLERS



EZ1202
ADVANCED CONTROLLER
USED WITH 12+ SERIES



EZ1415
CONTROLLER HOLDER
USED WITH EZ1202



EZ0006
BASIC CONTROLLER
USED WITH 12+ SERIES



EZ0008 - 15' (4.6M)
EZ0008-23 - 23' (7M)
EZ0008-48 - 48' (14.6M)
REPLACEMENT OR EXTENSION
FOR CONTROLLER
USED WITH EZ0006



EZ1413 - 15' (4.6M)
EZ1413-48 - 48' (14.6M)
REPLACEMENT OR EXTENSION
FOR CONTROLLER
USED WITH EZ1202

DOME CLIP



EZ2127LC
LENS RETAINING CLIP,
CHROME
USED WITH 21 & 27 SERIES



EZ2127LCB
LENS RETAINING CLIP,
BLACK
USED WITH 21 & 27 SERIES



EZ21F3X
FRONT/REAR TR3 LED
MODULE - INDEPENDENT
FLASHING (A, B, G, R, W)
USED WITH 21 SERIES



EZ21F4X
FRONT/REAR TR4 LED
MODULE - INDEPENDENT
FLASHING (A, B, G, R, W)
USED WITH 21 SERIES

LIGHT SOURCE COMPONENTS



LIGHT SOURCE COMPONENTS



EZZ21IF6X
CORNER TR6 LED MODULE -
INDEPENDENT FLASHING
(A, B, G, R, W)
USED WITH 21 SERIES



EZZ21IF9X
CORNER TR9 LED MODULE -
INDEPENDENT FLASHING
(A, B, G, R, W)
USED WITH 21 SERIES



EZZ21CC3X
FRONT/REAR TR3 LED
MODULE - CENTRALLY
CONTROLLED (A, B, G, R, W)
USED WITH 21 SERIES



EZZ21CC4X
FRONT/REAR TR4 LED
MODULE - CENTRALLY
CONTROLLED (A, B, G, R, W)
USED WITH 21 SERIES



EZZ21CC6X
CORNER TR6 LED MODULE -
CENTRALLY CONTROLLED
(A, B, G, R, W)
USED WITH 21 SERIES



EZZ21CC9X
CORNER TR9 LED MODULE -
CENTRALLY CONTROLLED
(A, B, G, R, W)
USED WITH 21 SERIES



EZZ21CC18XX
FRONT/REAR TR18 LED
MODULE - CENTRALLY
CONTROLLED
(AB, AW, BW, RB, RW)
USED WITH 21 SERIES



EZZ2127WL
ALLEY/WORKLIGHT TR3
LED MODULE
USED WITH 21 & 27 SERIES
(WORKLIGHT ONLY)



EZZ2127ST
STOP-TAIL-TURN LED MODULE
(PAIR)
USED WITH 21/27 SERIES



EZZ27IF3X
FRONT/REAR REF3 LED
MODULE - INDEPENDENT
FLASHING (A, B, R, W)
USED WITH 27 SERIES



EZZ27IF3SX
FRONT/REAR REF3 LED
MODULE - STEADY BURN (A,
B, R, W)
USED WITH 27 SERIES



EZZ27IF8X
FRONT/REAR REF8 LED
MODULE - INDEPENDENT
FLASHING (A, B, R, W)
USED WITH 27 SERIES



EZZ27IF8SX
FRONT/REAR REF8 LED
MODULE STEADY BURN
(A, B, R, W)
USED WITH 27 SERIES



EZZ27IF12X
FRONT/REAR REF12 LED
MODULE INDEPENDENT
FLASHING (A, B, R, W)
USED WITH 27 SERIES



EZZ27CC3X
FRONT/REAR REF3 LED
MODULE CENTRALLY
CONTROLLED (A, B, R, W)
USED WITH 27 SERIES



EZZ27CC8X
FRONT/REAR REF8 LED
MODULE CENTRALLY
CONTROLLED (A, B, R, W)
USED WITH 27 SERIES



EZZ27CC12X
FRONT/REAR REF12 LED MODULE
CENTRALLY CONTROLLED (A, B,
R, W)
USED WITH 27 SERIES



EZZ27CC22XX
FRONT/REAR REF22 LED
MODULE CENTRALLY
CONTROLLED
(AB, AW, BW, RB, RW)
USED WITH 27 SERIES



EZZ2700AL
ALLEY LED MODULE
USED WITH 27 SERIES



EZZ2127DOT
DOT STRIP LED MODULE
USED WITH 21/27 SERIES



EZ1205
STOP-TAIL-INDICATOR (PAIR)
USED WITH 12+ SERIES



EZ1203X
FRONT/REAR MODULE
(A, B, C, G, R)
USED WITH 12+ SERIES



EZ0003
WORKLIGHT/ALLEY LIGHT (PAIR)
USED WITH 12+ SERIES



FEATURED WORKLIGHT
EW4009 - HEATED LED DOT WORKLIGHTS



FEATURED WORKLIGHT
EW2530 - LED Worklight

EXTEND THE DAY

WORKLIGHTS

**5 YEAR
NO-HASSLE
WARRANTY**



WORKLIGHTS

LUMENS

At ECCO, we measure our lumen output to ensure the most accurate reading of the “actual” lumen count. The lumens found throughout the catalog are **“measured raw.”** Lumen output is an important factor in the buying process. Here is a quick guideline for comparing lumens to lumens:

RAW LUMENS

Measured Raw - A highly accurate reading of the actual lumen count at the time the light is powered on, as measured in an integrating sphere.

Calculated Raw - The lumen count is based on a theoretical value.

If a light uses 10 LEDs with a max lumen output rating of 100 per LED, the raw lumen output would be 1,000 lumens (10 x 100 = 1,000).

EFFECTIVE LUMENS

Measured Effective - A highly accurate reading of the actual lumen count, taken once the light has been powered on for a constant 30 minutes.

Calculated Effective - An estimated percentage (e.g. 30%) is deducted from the raw calculated lumens to account for potential output losses once the light has been powered on for a period of time.

EW4010 FOUR 12-WATT LEDs



Packaged in pairs



12-24V | HEATED LENS | PARKING LIGHT | UNIVERSAL INDICATOR

6.7" H x 5.9" L x 3.3" D | 171mm H x 150mm L x 85mm D
6.7" H x 9.0" L x 3.3" D (with parking light) | 171mm H x 229mm L x 85mm D (with parking light)

Universal indicator can be mounted on top or sides

MODEL	LUMENS (RAW)	AMPS
EW4010	1,075 (low beam) 1,800 (high beam)	1.6 (low beam) 3.2 (high beam)

DESIGN FEATURES

- Packaged in pairs, replacement units available, see page 84
- DOT headlight with Snow-melt
- Tempered glass lens
- Low Beam: Two 12-Watt LEDs
- Marker Light: Two 1.5-Watt LEDs
- Indicator: Eight 3-Watt LEDs

EW4008 FOUR 12-WATT LEDS



Packaged in pairs



12-24V | HIGH BEAM | LOW BEAM | INDICATOR | MARKER

3.0" H x 9.9" L x 3.4" D | 76mm H x 252mm L x 85mm D

MODEL	LUMENS (RAW)	AMPS
EW4008	1,600 (low beam) 2,400 (high beam)	1.7 (low beam) 2.7 (high beam)

DESIGN FEATURES

- Packaged in pairs, replacement units available, see page 84
- Black powder-coated, aluminum housing designed for efficient heat management
- UV stabilized polycarbonate lens and reflector optics
- Low Beam: Two 12-Watt LEDs
- Marker Light: Eight 3-Watt LEDs
- Indicator: Eight 3-Watt LEDs

EW4009 THREE 47-WATT LEDS



Packaged in pairs



12-24V | HIGH BEAM | LOW BEAM | INDICATOR | MARKER

2.7" H x 12.9" L x 1.8" D | 68mm H x 329mm L x 45mm D

MODEL	LUMENS (RAW)	AMPS
EW4009	1,000 (low beam) 1,700 (high beam)	1.4 (low beam) 3.5 (high beam)

DESIGN FEATURES

- Packaged in pairs, replacement units available, see page 84
- Snow-melt and anti-icing system
- Black powder-coated, aluminum housing designed for efficient heat management
- UV stabilized polycarbonate lens and reflector optics
- Low Beam: Two 16.6-Watt LEDs
- Marker Light: Twelve .55-Watt LEDs
- Indicator: Twelve 6.8-Watt LEDs

EW3007-F FOUR 5-WATT LEDs



12-24V | INTEGRATED DRIVING LIGHT

3.4" H x 3.2" L x 3.0" D | 85mm H x 81mm L x 76mm D

MODEL	TYPE	LUMENS (RAW)	AMPS
EW3007-F	Flood	1,025	1.0

DESIGN FEATURES

- 3-18 AWG conductor cable
- Built-in vent
- Compact design
- Aluminum heatsink housing
- Polycarbonate lens
- Interchangeable, color-trim bezel options: black, red, blue and yellow (included)

EW2604 TWO 10-WATT LEDs



12-24V | INTEGRATED ACCENT LIGHT

4.3" H x 6.9" L x 2.6" D | 108mm H x 176mm L x 66mm D

MODEL	TYPE	LUMENS (RAW)	AMPS
EW2604	Spot	1,600	2.1

DESIGN FEATURES

- Heavy-duty mount
- 2-18 AWG conductor cable
- Built-in vent
- Aluminum housing
- Polycarbonate lens

EW2603

FIFTEEN 1.5-WATT LEDS



12-24V | 110° LIGHT OUTPUT

3.1" H x 3.8" L x 2.9" D | 78mm H x 97mm L x 73mm D

MODEL	TYPE	LUMENS (RAW)	AMPS
EW2603	Flood/Spot Combo	1,700	1.9

DESIGN FEATURES

- 2-18 AWG conductor cable
- Built-in vent
- Heavy-duty mount
- Aluminum housing
- Polycarbonate lens

EW2605

NINE 7-WATT LEDS



12-24V | DEUTSCH CONNECTOR

4.9" H x 3.9" L x 2.9" D | 123mm H x 100mm L x 73mm D

MODEL	TYPE	LUMENS (RAW)	AMPS
EW2605	Flood	2,875	2.4

DESIGN FEATURES

- Direct mount option
- Built-in vent
- Aluminum housing
- Polycarbonate lens

EW4020

THIRTY-SIX 1.2-WATT LEDS



12-24V | DEUTSCH CONNECTOR | HEATED LENS

5.6" H x 5.7" L x 2.6" D | 143mm H x 145mm L x 65mm D

MODEL	TYPE	LUMENS (RAW)	AMPS
EW4020	Flood	3,050	4.5

DESIGN FEATURES

- Heavy-duty mount with 180-degree angle
- Built-in vent
- Aluminum housing
- Heated glass lens with automatic integration that turns on when ambient temperatures reach or get below (approximately) 35°F (2°C)



DT04-2P
Female DEU
Mate: DT06-2S

EW2520

TWENTY-FOUR 1.5-WATT LEDS



12-24V | DEUTSCH CONNECTOR

5.1" H x 4.2" L x 1.9" D | 129mm H x 107mm L x 48mm D

MODEL	TYPE	LUMENS (RAW)	AMPS
EW2520	Flood	3,125	2.1

DESIGN FEATURES

- Built-in vent
- Heavy-duty mount
- Aluminum housing
- TIR optics with a polycarbonate lens



DT04-2P
Female DEU
Mate: DT06-2S



Youtube.com/ECCOSafety

EW2530 SIX 10-WATT LEDS



12-24V | DEUTSCH CONNECTOR

4.9" H x 5.4" L x 2.7" D | 125mm H x 136mm L x 67mm D



DT04-2P
Female DEU
Mate: DT06-2S



MODEL	TYPE	LUMENS (RAW)	AMPS
EW2530	Flood	3,750	3.6

DESIGN FEATURES

- 120° beam pattern
- Built-in vent
- Heavy-duty stainless steel mounting bracket
- Aluminum housing
- Polycarbonate lens

EW4030 FIFTY-SIX 1.5-WATT LEDS



12-24V | DEUTSCH CONNECTOR

2.7" H x 12.9" L x 1.8" D | 68mm H x 329mm L x 45mm D



MODEL	TYPE	LUMENS (RAW)	AMPS
EW4030	Flood	4,950	3.7

DESIGN FEATURES

- 170° articulated mount
- Built-in vent
- Aluminum housing
- Polycarbonate lens

EW2403

THREE 3-WATT LEDS



12-24V | COMPACT DESIGN

2.4" H x 2.4" L x 2.4" D | 60mm H x 60mm L x 62mm D

MODEL	TYPE	LUMENS (RAW)	AMPS
EW2403	Flood	500	0.6

DESIGN FEATURES

- Surface or bracket mount
- Aluminum heatsink housing
- Polycarbonate lens



EW2019

THIRTY-THREE 1-WATT LEDS



12-24V | COMPACT DESIGN

2" H x 3.7" L x 0.9" D | 52mm H x 93mm L x 23mm D

MODEL	TYPE	LUMENS (RAW)	AMPS
EW2019	Flood	600	0.4

DESIGN FEATURES

- Aluminum heatsink housing
- Polycarbonate lens
- Steel mounting bracket



EW2461 SERIES

FIVE 3-WATT LEDs



12V | RECHARGEABLE WITH USB

7.7" H x 4.5" L x 3.9" D | 195mm H x 115mm L x 100mm D

MODEL MODELO MODÈLE	TYPE TIPO TYPE	LUMENS (RAW) LÚMENES LUMENS
EW2461	Flood	650
EW2461-CAMO	Flood	650

DESIGN FEATURES

- Magnetic base
- Rechargeable Lithium Battery, estimated run time of 3 to 4 hours
- Aluminum heatsink housing
- Stainless steel mounting bracket
- Polycarbonate lens

DISCLAIMER: Product performance and specifications are based upon evaluation of a fully-charged, new battery. It is normal for all batteries to degrade and lose capacity over time.

EW2491

FIVE 3-WATT LEDs



12-24V | COMPACT DESIGN

3.8" H x 3.3" L x 1.7" D | 96mm H x 85mm L x 43mm D



MODEL	TYPE	LUMENS (RAW)	AMPS
EW2491	Flood	725	0.6

DESIGN FEATURES

- Aluminum heatsink housing
- Polycarbonate lens
- Steel mounting bracket

EW2471

FIVE 3-WATT LEDs



12-24V | COMPACT DESIGN

3.9" H x 3.3" L x 1.6" D | 98mm H x 85mm L x 42mm D



MODEL	TYPE	LUMENS (RAW)	AMPS
EW2471	Flood	775	0.6

DESIGN FEATURES

- Aluminum heatsink housing
- Polycarbonate lens
- Steel mounting bracket

EW2481

FIVE 3-WATT LEDs



12-24V | COMPACT DESIGN

3.8" H x 3.3" L x 1.7" D | 96mm H x 85mm W x 43mm D

MODEL	TYPE	LUMENS (RAW)	AMPS
EW2481	Flood	800	0.6

DESIGN FEATURES

- Aluminum heatsink housing
- Polycarbonate lens
- Steel mounting bracket



E92013

SIX 3-WATT LEDs



12-24V | LED PAR 36 FORM

5" H x 5" D | 127mm H x 127mm D

MODEL	TYPE	LUMENS (RAW)	AMPS
E92013	Flood	675	0.9

DESIGN FEATURES

- Polycarbonate lens
- Steel mounting bracket



E92004 SIX 3-WATT LEDs



12-24V

5.2" H x 4.2" L x 1.7" D | 132mm H x 107mm L x 43mm D

MODEL	TYPE	LUMENS (RAW)	AMPS
E92004	Flood	700	0.6

DESIGN FEATURES

- Aluminum heatsink housing
- Acrylic lens
- Steel mounting bracket



E92007 SERIES FIVE 3-WATT LEDs



excluding -HV excluding -HV

12-24V(E92007/E92007-MG) 12-80V(E92007-HV)

4.3" H x 4.3" L x 1.8" D | 110mm H x 110mm L x 46mm D

MODEL	TYPE	LUMENS (RAW)	AMPS
E92007	Flood	750	0.7
E92007-HV	Flood	800	0.9
E92007-MG	Flood	750	0.7

DESIGN FEATURES

- Aluminum heatsink housing
- Acrylic lens
- Steel mounting bracket (permanent mount)
- High-voltage and magnet-mount options
- Cigarette plug with on/off switch (magnet version only)



E92005

NINE 3-WATT LEDs



12-24V

4.3" H x 4.3" L x 1.8" D | 110mm H x 110mm L x 46mm D

MODEL	TYPE	LUMENS (RAW)	AMPS
E92005	Flood	1,000	1.2

DESIGN FEATURES

- Aluminum heatsink housing
- Acrylic lens
- Steel mounting bracket



E92006

NINE 3-WATT LEDs



12-24V

4.3" H x 4.3" L x 1.8" D | 110mm H x 110mm L x 45mm D

MODEL	TYPE	LUMENS (RAW)	AMPS
E92006	Flood	1,450	1.3
E92006-DEL2	Flood, Delphi 2-Pin Connector	1,450	1.3

DESIGN FEATURES

- Aluminum heatsink housing
- Acrylic lens
- Steel mounting bracket



EW2409

SIX 3-WATT LEDs



12-24V | FLUSH / GROMMET MOUNT

2.4" H x 4.4" L x 2.2" D | 62mm H x 112mm L x 55mm D
 3.5" H x 6.4" L x 2.3" D | 89mm H x 162mm L x 58mm D (with grommet)



MODEL	TYPE	LUMENS (RAW)	AMPS
EW2409	Flood	850	1.1

DESIGN FEATURES

- 30° angle grommet mount included
- Aluminum heatsink housing
- Polycarbonate lens

EW2411

SIX 3-WATT LEDs



12-24V

2.4" H x 4.4" L x 2.2" D | 62mm H x 112mm L x 55mm D



MODEL	TYPE	LUMENS (RAW)	AMPS
EW2411	Flood	1,000	1.3

DESIGN FEATURES

- Aluminum heatsink housing
- Stainless steel mounting bracket
- Polycarbonate lens

EW2440 SERIES

SIX 3-WATT LEDs



12-24V

1.9" H x 6.3" L x 2.5" D | 47mm H x 160mm L x 63mm D

MODEL	TYPE	LUMENS (RAW)	ILLUMINATION COLOR	AMPS
EW2440	Spot	800	<input type="checkbox"/> C	0.8
EW2441	Flood	725	<input type="checkbox"/> C	1.2
EW2441A	Flood	560	<input checked="" type="checkbox"/> A	1.2

DESIGN FEATURES

- Compact design
- Aluminum heatsink housing
- Polycarbonate lens

EW2110 SERIES

SEVEN 1-WATT LEDs



12-80V | MULTI-APPLICATION, OE COMPLIANT

3.3" H x 3.3" L x 2.1" D | 84mm H x 84mm L x 53mm D (EW2110)
 3.8" H x 4.3" L x 2.1" D | 97mm H x 110mm L x 53mm D (EW2111 / -DEU)
 3.6" H x 3.6" L x 2.1" D | 92mm H x 91mm L x 53mm D (EW2112 / -DEU)

MODEL	SHAPE	TYPE	LUMENS (RAW)	AMPS
EW2110	●	Flood	1,000	1.8
EW2111	●	Flood	950	1.2
EW2111-DEU	●	Flood, Deutsch Connector	950	1.2
EW2112	■	Flood	1,000	1.6
EW2112-DEU	■	Flood, Deutsch Connector	1,000	1.6

DESIGN FEATURES

- Compact design
- Aluminum heatsink housing
- Polycarbonate lens
- Zinc-plated steel mounting bracket

EW2450 SERIES

NINE 3-WATT LEDs



12-24V | 360° ROTATION AXIS

5.2" H x 4.3" L x 3.3" D | 131mm H x 110mm L x 83mm D

MODEL	SWITCHED	TYPE	LUMENS (RAW)	AMPS
EW2450	Yes	Spot	1,300	2.2
EW2450-MG	Yes	Spot	1,300	2.2
EW2451	Yes	Flood	1,300	2.2
EW2451-MG	Yes	Flood	1,300	2.2

DESIGN FEATURES

- On/off switch
- Removable handle (reinforced nylon)
- Aluminum heatsink housing
- Magnet mount available
- Cigarette plug with on/off switch (MG mount)
- Polycarbonate lens



EW3006 SERIES

SIX 3-WATT LEDs



12-24V | COMPACT DESIGN | DEUTSCH CONNECTOR

3.1" H x 3.2" L x 3.0" D | 78mm H x 81mm L x 76mm D

MODEL	TYPE	LUMENS (RAW)	AMPS
EW3006-F	Flood	1,615	1.5
EW3006-S	Spot	1,630	1.4

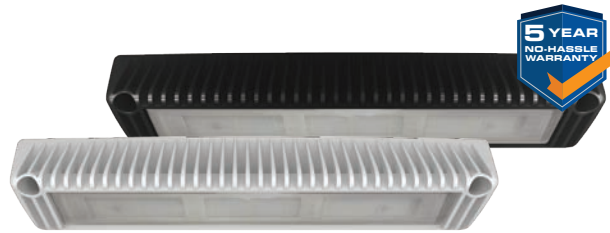
DESIGN FEATURES

- Includes 2-pin deutsch connector and 6-inch male connector
- 90° flood optics, 8° spot optics
- Unique aluminum heatsink housing design for efficient heat management
- Acrylic lens
- Interchangeable, color-trim bezel options: black, red, blue and yellow (included)
- Steel-mounting bracket



Includes DEU Connector (DT04-2P)

EW2601 SERIES TWENTY-SEVEN 1-WATT LEDs



12-24V | 40° DOWN ANGLE

2.7" H x 12.9" L x 1.8" D | 68mm H x 329mm L x 45mm D

MODEL	HOUSING COLOR	TYPE	LUMENS (RAW)	AMPS
EW2601-W	□ W	Flood	1,850	2.0
EW2601-B	■ B	Flood	1,850	2.0

DESIGN FEATURES

- Great worklight for side panels, rear bay doors, exterior workstations and tow beds
- Aluminum heatsink housing
- 40° down angle can be mounted in a variety of locations
- Polycarbonate lens

EQUINOX™ SERIES SIX 3-WATT LEDs (EW2101), EIGHT 3-WATT LEDs (EW2102)



12-24V | COMBINATION OPTICS

4.9" H x 4.3" L x 2.2" D | 124mm H x 110mm L x 55mm D

MODEL	TYPE	LUMENS (RAW)	AMPS
EW2102	Flood, ECCO Lo-Glo®	2,000	2.6
EW2101	Flood	1,650	1.9

DESIGN FEATURES

- ECCO Lo-Glo® obstruction marker light (EW2102)
- Polycarbonate UV hardcoated lens
- Aluminum heatsink housing
- Moisture wicking vent
- Zinc plated steel mounting bracket

EW2431 FOURTEEN 3-WATT LEDS



12-24V

4.3" H x 4.3" L x 1.9" D | 110mm H x 110mm L x 48mm D



MODEL	TYPE	LUMENS (RAW)	AMPS
EW2431	Flood	2,075	1.7

DESIGN FEATURES

- Aluminum heatsink housing
- Stainless steel mounting bracket
- Polycarbonate lens

EW2340 SERIES FOUR 10-WATT LEDS



12-24V | HIGH-PERFORMANCE 10W LED | HEAVY-DUTY BRACKET

3.1" H x 5.3" L x 2.8" D | 79mm H x 135mm L x 71mm D



MODEL	TYPE	LUMENS (RAW)	AMPS
EW2340	Spot	2,200	1.9
EW2341	Flood	2,050	1.9

DESIGN FEATURES

- Aluminum heatsink housing
- ABS reflector and polycarbonate lens
- Steel mounting bracket

FOCUS360™ SERIES SIX 5-WATT LEDs



12-24V | 2,251 LUMENS

5.5" H x 7.2" L x 6.5" D | 140mm H x 182mm L x 165mm D

MODEL	HOUSING COLOR	TYPE	BEAM DISTANCE	CANDELA	AMPS
EW3000	■ B	Spot	1,970ft 600m	88,000	1.7
EW3001	□ W	Spot	1,970ft 600m	88,000	1.7

DESIGN FEATURES

- 350° rotation, 90° tilt range
- Permanent or magnet mount available
- Aluminum heatsink light head
- Polycarbonate housing



FOCUS360™ SERIES TEN 5-WATT LEDs



12-24V | 5,357 LUMENS

6.3" H x 7.6" L x 7.6" D | 160mm H x 193mm L x 193mm D

MODEL	HOUSING COLOR	TYPE	BEAM DISTANCE	CANDELA	AMPS
EW3010	■ B	Spot	3,740ft 1,140m	327,000	2.7
EW3011	□ W	Spot	3,740ft 1,140m	327,000	2.7
EW3011-DEL2	□ W	Spot, Delphi 2-Pin Connector	3,740ft 1,140m	327,000	2.7

DESIGN FEATURES

- 360° continuous rotation, 135° tilt range
- Permanent or magnet mount available
- "Return to Home" setting will automatically return light to original position when powered off
- Aluminum heatsink lighthouse
- Polycarbonate housing



EW2421 SIXTEEN 3-WATT LEDS



12-24V

4.2" H x 4.2" L x 1.9" D | 108mm H x 108mm L x 48mm D



MODEL	TYPE	LUMENS (RAW)	AMPS
EW2421	Flood	2,400	2.0

DESIGN FEATURES

- Aluminum heatsink housing
- Stainless steel mounting bracket
- Polycarbonate lens

EW2320 SERIES FOURTEEN 3-WATT LEDS



12-24V | MODULAR

3.0" H x 7" L x 2.5" D | 77mm H x 178mm L x 63mm D



MODEL	TYPE	LUMENS (RAW)	AMPS
EW2320	Spot	2,400	2.2
EW2321	Flood	2,400	2.2

DESIGN FEATURES

- Aluminum heatsink housing
- Stainless steel mounting bracket
- Polycarbonate lens
- **E94011:** Modular Connector - required to connect units together (no included, see page 83)

EW2501 FIVE 10-WATT LEDS



12-24V

3.8" H x 5.7" L x 3.1" D | 98mm H x 145mm L x 79mm D

MODEL	TYPE	LUMENS (RAW)	AMPS
EW2501	Flood	2,900	3.0

DESIGN FEATURES

- Aluminum heatsink housing
- Stainless steel mounting bracket
- Polycarbonate lens

EW2300 SERIES SIX 10-WATT LEDS



12-24V | HIGH-PERFORMANCE 10W LED | TEMPER GLASS LENS

4.2" H x 6.6" L x 2.5" D | 107mm H x 167mm L x 63mm D

MODEL	TYPE	LUMENS (RAW)	AMPS
EW2300	Spot	3,100	2.7
EW2301	Flood	3,000	2.7

DESIGN FEATURES

- Aluminum heatsink housing
- Zinc mounting bracket
- Polycarbonate lens

EW2311

NINE 10-WATT LEDs



12-24V | SEVERE DUTY

5.7" H x 5.9" L x 4.6" D | 139mm H x 149mm L x 117mm D

MODEL	TYPE	LUMENS (RAW)	AMPS
EW2311	Flood	4,950	5.3

DESIGN FEATURES

- Vibration-protected bracket
- High-intensity beam
- Aluminum heatsink housing
- Heavy-duty, stainless steel articulating bracket
- Polycarbonate lens



EW2510 SERIES

NINE 10-WATT LEDs



12-24V | SEVERE DUTY

6.5" H x 5.3" L x 4.9" D | 164mm H x 134mm L x 123mm D

MODEL	TYPE	LUMENS (RAW)	AMPS
EW2510	Spot	5,100	4.8
EW2511	Flood	5,000	4.8

DESIGN FEATURES

- Vibration-protected bracket
- High-intensity beam
- Aluminum heatsink housing
- Polycarbonate lens



EW2010 SERIES THREE 3-WATT LEDs



12-56V | BLUE OR RED PEDESTRIAN ARROW PROJECTION

4" H x 3.8" L x 3.5" D | 102mm H x 95mm L x 89mm D

MODEL	COLOR	AMPS
EW2010B	B	0.6
EW2010R	R	0.6

DESIGN FEATURES

- Pedestrian warning for material handling applications
- Aluminum heatsink housing
- Polycarbonate lens



EW2015R THREE 3-WATT LEDs



12-80V | RED BOUNDARY LINE PROJECTION

2.6" H x 2.9" L x 2.2" D | 66mm H x 74mm L x 56mm D

MODEL	COLOR	AMPS
EW2015R	R	1.1

DESIGN FEATURES

- Pedestrian warning for material handling applications
- Aluminum heatsink housing
- Polycarbonate lens



EW2002 TWO 3-WATT LEDs



12-80V | BLUE SPOT PEDESTRIAN PROJECTION

3.6" H x 5.6" L x 2.5" D | 91mm H x 143mm L x 65mm D

MODEL	COLOR	AMPS
EW2002B	B	0.6

DESIGN FEATURES

- Pedestrian warning for material handling applications
- Aluminum heatsink housing
- Polycarbonate lens



WORKLIGHT ACCESSORIES



MOUNTING HARDWARE



EZ3014
MAGNET MOUNT KIT, BLACK
USED WITH EW3000



EZ3015
MAGNET MOUNT KIT, WHITE
USED WITH EW3001



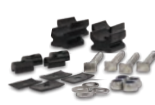
EZ3016
MAGNET MOUNT KIT,
WHITE
USED WITH EW3011



EZ3017
MAGNET MOUNT KIT, BLACK
USED WITH EW3010



EZ3010-ADPT
ADAPTER BRACKET
USED WITH EW3000/01/10/11



EZ4008-MK
REPLACEMENT
MOUNTING KIT
USED WITH EW4008



EZ4009-MK
REPLACEMENT
MOUNTING KIT
USED WITH EW4009



EZ4010-MK
REPLACEMENT
MOUNTING KIT
USED WITH EW4010



EZ4030
LINKING BRACKET
FOR DOUBLE STACK
USED WITH EW4030

CABLES



E94011
MODULAR CONNECTOR
- REQUIRED TO CONNECT
UNITS TOGETHER
USED WITH EW2320/21



EZ3012
5 METER JOYSTICK CABLE
USED WITH EZ3011



EZ3013
JOYSTICK CABLE
EXTENTION
USED WITH EZ3011



EZ4008-WIRE
10' REPLACEMENT
WIRE HARNESS
USED WITH EW4008



EZ4009-MK
10' REPLACEMENT
WIRE HARNESS
USED WITH EW4009



EZ4010-WIRE
10' REPLACEMENT
WIRE HARNESS
USED WITH EW4010



SWITCHES & CONTROLS



ER3010
REPLACEMENT REMOTE
USED WITH EW3000, EW3001,
EW3010 & EW3011



EZ3011
IN-DASH JOYSTICK CONTROLLER
USED WITH EW3010 & EW3011

LENSES



EZ3010A
ACCESSORY LENS, YELLOW
USED WITH EW3010 & EW3011



EZ3010F
ACCESSORY LENS, FLOOD
USED WITH EW3010 & EW3011



EZ3010G
ACCESSORY LENS, GREEN
USED WITH EW3010 & EW3011



EZ3010R
ACCESSORY LENS, RED
USED WITH EW3010 & EW3011

LIGHTS



EZ4008-LIGHT
SINGLE REPLACEMENT LIGHT
USED WITH EW4008



EZ4009-L (Left)
SINGLE REPLACEMENT
LIGHT, DRIVER SIDE
USED WITH EW4009



EZ4009-R (Right)
SINGLE REPLACEMENT
LIGHT, PASSENGER SIDE
USED WITH EW4009



EZ4010-LIGHT
SINGLE REPLACEMENT LIGHT
USED WITH EW4010



FEATURED UTILITY BAR

EW3225 - DOUBLE ROW LED UTILITY BAR

UTILITY BARS

WHEN
BRIGHTER
IS **BETTER**

**5 YEAR
NO-HASSLE
WARRANTY**



UTILITY BARS



EW3420 50" COMBINATION UTILITY BAR



12-24V | INTEGRATED SAFETY DIRECTOR™, STEADY BURN AMBER ER3420CB

2" H x 7.6" L x 3.3" D | 51mm H x 193mm L x 84mm D

MODEL	AMPS	BEAM DISTANCE	LUMENS (RAW)
EW3420 (upper row)	5.0 (steady burn amber)	381ft 116m	-
(lower row)	10.0 (steady burn white)	1,250ft 381m	12,600

DESIGN FEATURES

- Custom optics designed for dual-light operation
- Flood light with Safety Director™
- Dual-mounting options

EW3100 SERIES SINGLE ROW



DT04-2P
Female DEU
Mate: DT06-2S



12-24V | ADJUSTABLE END OR EXTRUSION MOUNT

2" H x 9.3" L x 2" D | 51mm H x 193mm L x 84mm D (EW3109)
 2" H x 20.6" L x 2" D | 51mm H x 356mm L x 84mm D (EW3114)
 2" H x 32" L x 2" D | 51mm H x 597mm L x 84mm D (EW3124)

MODEL	AMPS	TYPE	LUMENS (RAW)
EW3109	0.8	Flood	875
EW3120	1.8	Flood / Spot Combo	2,175
EW3132	3	Flood / Spot Combo	3,475

DESIGN FEATURES

- Deutsch connector
- Built-in vent to prevent fogging
- High-intensity beam
- Aluminum heatsink housing and polycarbonate lens

EW3200 SERIES DOUBLE ROW



12-24V | ADJUSTABLE END OR EXTRUSION MOUNT

3" H x 10.6" L x 2.6" D | 76mm H x 269mm L x 66mm D (EW3208)
 3" H x 14" L x 2.6" D | 76mm H x 363mm L x 66mm D (EW3214)
 3" H x 25" L x 2.6" D | 76mm H x 635mm L x 66mm D (EW3225)

MODEL	AMPS	TYPE	LUMENS (RAW)
EW3208	1.3	Flood / Spot Combo	1,325
EW3208-DEL2	1.3	Flood / Spot Combo, Delphi 2-Pin Connector	1,325
EW3214	2.7	Flood / Spot Combo	2,800
EW3225	4.3	Flood / Spot Combo	4,750

DESIGN FEATURES

- Delphi 2-pin connector (EW3208-DEL2)
- Built-in vent to prevent fogging
- High-intensity beam
- Aluminum heatsink housing and polycarbonate lens

UTILITY BAR ACCESSORIES



CABLES



EZ3420-CBL
 REPLACEMENT CONTROLLER
 CABLE (MAX OF 2 = 30')
 USED WITH EW3420

CONTROLLER



ER3420CB
 REPLACEMENT CONTROLLER
 USED WITH EW3420



FEATURED INTERIOR LIGHT

EW0371 - SWITCHED LED FLOOD



FEATURED INTERIOR LIGHT

EW0204 - MOTION ACTIVATED LED FLOOD



INTERIOR LIGHTING

**ENGINEERED
FROM THE INSIDE
OUT**

5 YEAR
NO-HASSLE
WARRANTY



INTERIOR LIGHTING

EW0100 SERIES

MOUNTS WITH HIGH-BOND TAPE / SCREWS



12V | SPLICEABLE



MODEL	LENGTH	MODULES	LUMENS (RAW, per module)	AMPS
EW0133	34' 10,363mm	3 LED, 50 Modules	150	0.1
EW0134	25' 7,620mm	4 LED, 30 Modules	200	0.2

MOUNTS WITH HIGH-BOND TAPE



12V | SPLICEABLE



MODEL	LENGTH	TYPE	LUMENS (RAW)	AMPS
EW0116	12" 305mm	18 LED	350	0.4
EW0117	24" 609mm	36 LED	700	0.7
EW0111	36" 914mm	54 LED	1,400	1.1
EW0118	16' 4,877mm	-	2,600	3.6

DESIGN FEATURES

- Wire leads at both ends to allow multiple units to be connected (excludes EW0118)
- Compact design allows them to be concealed easily in any location
- Large selection of sizes, and intensities

EW0200 SERIES

MOUNTS WITH HIGH-BOND TAPE / SCREWS



12-24V 12V(EW0206) | 0.08A | FLOOD

0.6" H x 2.0" L x 1.2" D | 16mm H x 52mm L x 30mm D

MODEL	MOUNT	BEZEL COLOR	LUMENS (RAW)
EW0202	Surface	Black	65
EW0203	Surface	White	65
EW0206	Surface	Chrome	30

DESIGN FEATURES

- White, black or chrome bezel options



EW0204 / EW0205 SURFACE MOUNT



12-24V | 0.8A | FLOOD

0.8" D x 5.1" Diameter | 19mm D x 130mm Diameter

MODEL	PIR MOTION SENSOR	TYPE	LUMENS (RAW)
EW0204	Yes	51 LED	750
EW0205	No	51 LED	750



DESIGN FEATURES

- Available with PIR motion sensor

EW0200 SURFACE MOUNT



12-24V | 0.4A | FLOOD

0.7" D x 5.5" Diameter | 18mm D x 140mm Diameter

MODEL	SWITCHED	TYPE	LUMENS (RAW)
EW0200	Yes	72 LED	425



EW0220 / EW0240 SERIES FLUSH MOUNT



12V(EW0220-21) 12-24V(EW0240-41) | SPOT | SWITCHED

0.8" D x 2.8" Diameter | 20mm H x 71mm Diameter (EW0210, EW0221)
0.8" D x 4.6" L x 0.7" D | 20mm H x 117mm L x 18mm D (EW0240, EW0241)

MODEL	SHAPE	TYPE	LUMENS (RAW)	AMPS
EW0220	●	7 LED, White	50	0.1
EW0221	●	7 LED, Chrome	50	0.1
EW0240	■	30 LED, White	150	0.2
EW0241	■	30 LED, Chrome	150	0.2



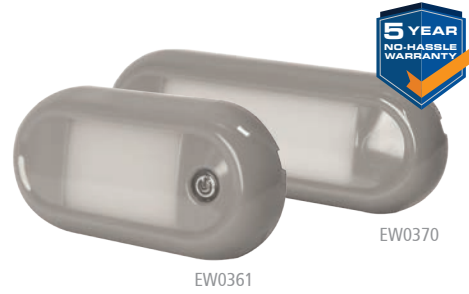
DESIGN FEATURES

- White or chrome bezel options

EW0300 SERIES SURFACE MOUNT



12-24V | FLOOD



2.6" D x 5.4" L x 0.8" D | 66mm H x 136mm L x 20mm D (EW0360/61)
2.6" D x 7.3" L x 0.7" D | 66mm H x 186mm L x 19mm D (EW0370/71)

MODEL	LENGTH	TYPE	LUMENS (RAW)	AMPS
EW0360	5.4" 136mm	27 LED	400	0.5
EW0361	5.4" 136mm	27 LED, Switched	400	0.5
EW0370	7.3" 186mm	42 LED	575	0.6
EW0371	7.3" 186mm	42 LED, Switched	575	0.6

DESIGN FEATURES

- Switched and non-switched options

EW0351 SURFACE MOUNT



12V | FLOOD



Connect multiple units together

1.3" D x 13.7" L x 0.5" D | 33mm H x 348mm L x 13mm D

MODEL	TYPE	LUMENS (RAW)	AMPS
EW0351	16 LED	300	0.5

DESIGN FEATURES

- Aluminum housing
- **MODULAR:** Connect up to four units with integrated bullet connectors

EW0400 SERIES SURFACE MOUNT



12-24V | FLOOD

2" D x 5.4" L x 0.5" D | 51mm H x 137mm L x 13mm D (EW0400/10)
2" D x 11.8" L x 0.5" D | 51mm H x 300mm L x 13mm D (EW0401/11)

MODEL	LENGTH	TYPE	LUMENS (RAW)	AMPS
EW0400	5.4" 137mm	10 LED	200	0.4
EW0410	5.4" 137mm	10 LED, Switched	200	0.4
EW0401	11.8" 300mm	22 LED	475	0.7
EW0411	11.8" 300mm	22 LED, Switched	475	0.7

DESIGN FEATURES

- Rugged, heavy-duty design
- On/off and door switch feature (EW0410 & EW0411)
- Aluminum housing
- Frosted lens



EW0400



EW0600 SERIES SURFACE MOUNT



12-24V | FLOOD

4" D x 18" L x 1.1" D | 102mm H x 460mm L x 28mm D (EW0600)
4" D x 25" L x 1.1" D | 102mm H x 635mm L x 28mm D (EW0601)
4" D x 33" L x 1.1" D | 102mm H x 860mm L x 28mm D (EW0602)

MODEL	LENGTH	TYPE	LUMENS (RAW)	AMPS
EW0600	18" 460mm	96 LED, Switched	2,000	1.1
EW0601	25" 635mm	144 LED, Switched	3,700	2.0
EW0602	33" 860mm	192 LED, Switched	4,900	2.3

DESIGN FEATURES

- High-output switched light ideal for large spaces
- Aluminum housing



EW0600



EW0700 SERIES SURFACE MOUNT



EW0700

12-24V | FLOOD

1.8" D x 13" L x 2" D | 46mm H x 330mm L x 51mm D (EW0700)
 1.8" D x 21.5" L x 2" D | 46mm H x 546mm L x 51mm D (EW0701)

MODEL	LENGTH	TYPE	LUMENS (RAW)	AMPS
EW0700	13" 330mm	6 LED, Switched	400	0.5
EW0701	21.5" 546mm	12 LED, Switched	1,250	0.9

DESIGN FEATURES

- Heavy-duty switched cargo / work area light
- Pivot-mounting foot provides adjustable lighting angles
- Aluminum housing

EW0800 SERIES 90° CORNER MOUNT



Side view - 90° Corner mount

12-24V | FLOOD

0.68" D x 11.9" L x 0.68" D | 17.2mm H x 460mm L x 17.2mm D (EW0800)
 0.68" D x 21.5" L x 0.68" D | 17.2mm H x 635mm L x 17.2mm D (EW0801)
 0.68" D x 31.5" L x 0.68" D | 17.2mm H x 860mm L x 17.2mm D (EW0802)

MODEL	LENGTH	TYPE	LUMENS (RAW)	AMPS
EW0800	11.9" 460mm	12 LED	200	0.2
EW0801	21.5" 635mm	24 LED	400	0.4
EW0802	31.5" 860mm	36 LED	600	0.6

DESIGN FEATURES

- Aluminum housing
- Frosted lens
- Mounts with concealed fasteners
- Perfect where a high-output light is required but space is limited

INTERIOR LIGHTING ACCESSORIES



EZ0112
CAP & WIRE FOR SPLICED SECTIONS
USED WITH EW0110 - EW0118



EZ0351
REPLACEMENT BULLET CONNECTORS
USED WITH EW0351ANGE



EZ0121
ON/OFF SWITCH
USED WITH INTERIOR LIGHTING



EZ0122
ON/OFF SWITCH WITH DIMMING
USED WITH INTERIOR LIGHTING



EZ0120
PIR MOTION SENSOR 110° CONE,
ADJUSTABLE SENSITIVITY
USED WITH INTERIOR LIGHTING



WE GOT YOUR BACK



REVERSING SAFETY

FEATURED ALARM
SA951 - SMART ALARM





FEATURED CAMERA

EC2030-WC
WIRELESS MAGNETIC CAMERA



REVERSING SAFETY

WHAT ARE THE OPTIONS?

There are several decisions to make when selecting a back-up alarm.

First, you can choose between a tonal alarm and a multi-frequency™ alarm. Industry experts suggest either can provide effective warning and each has its merits.

Second, you must choose an alarm with the appropriate sound pressure level (SPL). OSHA requires a reverse alarm to be audible above the surrounding noise level. Consider the ambient noise level, and if it remains reasonably constant, select the appropriate fixed dB alarm, whether tonal or multi-frequency. The key is complying with the requirements of OSHA while selecting the lowest SPL alarm possible to avoid causing a noise nuisance.

Fortunately, ECCO pioneered another solution — the Smart Alarm®, available in either tonal or multi-frequency. Smart Alarms monitor ambient noise automatically and adjust their output to 5dB above that, satisfying OSHA's requirements. Perfect for worksites with inconsistent noise or varying noise levels.

BEEP TONAL

The beep-beep sound is a familiar signal that is readily understood as a danger signal.

The sound is more piercing and therefore less likely to be masked by ambient noise such as vehicle engines.

SHHH MULTI-FREQUENCY

Shhh-shhh is a newer sound that has been introduced as a warning signal.

The sound is perceived to be more directional.

The sound is perceived to dissipate more quickly outside the danger zone behind the vehicle.

SMART ALARM®

Listens. Adjusts. Reacts.

Smart Alarms self-adjust to varying environmental noise by continually listening and reacting to adjust their output to 5 dB(A) above ambient sound levels to ensure their sound is audible without creating a nuisance. It's the smartest way to ensure OSHA compliance and eliminate noise complaints. Choose from tonal and multi-frequency models.



Listens
0.4 Seconds



Sounds
0.5 Seconds

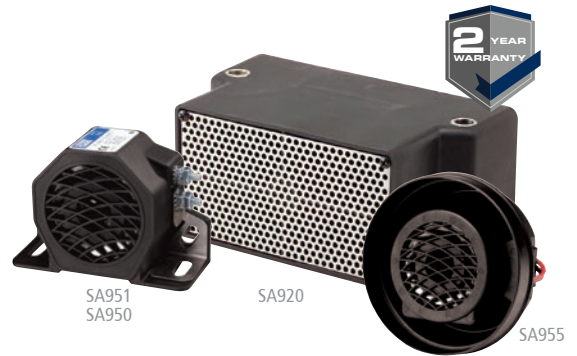


Shuts Down
0.1 Seconds



**Cycle
Repeats**

SMART ALARM® SURFACE / GROMMET MOUNT



MODEL	TYPE	VOLTS	DECIBELS	AMPS
SA951	Smart	12-48	77-97	0.2
SA950	Smart	12-24	82-102	0.4
SA955	Smart	12-24	82-102	0.4
SA920	Smart	12-24	97-112	0.6

SURFACE / GROMMET MOUNT



MODEL	TYPE	VOLTS	DECIBELS	AMPS
EA9724	Smart, MFA	12-24	77-97	0.7
EA9780	Smart, MFA	36-80	77-97	0.8
SA931N	Smart	12-48	82-102	0.2
SA901N	Smart	12-24	82-107	0.3
SA907N	Smart	12-24	82-107	0.5
EA9070	Smart, MFA	12-24	87-107	0.9
SA914N	Smart, OEM Mounting	12-24	87-112	1.5
SA917N	Smart	12-24	87-112	1.5
SA940	Smart, Grommet	12-24	87-112	0.6

DESIGN FEATURES

- World's first self-adjusting back-up alarm, constantly measuring ambient noise and adjusting their sound level, creating a volume that is safe without being annoying or contributing to noise pollution
- Smart Alarms eliminate the need for constant manual adjustment and help prevent intentional alarm disconnection
- Sealed in epoxy for protection against dust, moisture, and vibration
- **MFA:** Multi-Frequency™ Alarm

MULTI-FREQUENCY™ ALARMS SURFACE MOUNT



MODEL	TYPE	VOLTS	DECIBELS	AMPS
EA5050	MFA	12-24	87	0.4
EA5200	MFA	12-24	97	1.0
EA5200-APT2	MFA Aptiv Technologies 2-pin connector	12-24	97	1.0

SURFACE MOUNT



MODEL	TYPE	VOLTS	DECIBELS	AMPS
EA9724	Smart, MFA	12-24	77-97	0.7
EA9780	Smart, MFA	36-80	77-97	0.8
EA9070	Smart, MFA	12-24	87-107	0.9
EA6100	MFA	12-24	97	0.7
EA7020	MFA	12-24	102	0.6
EA7070	MFA	12-24	107	0.8

DESIGN FEATURES

- Emits sound at multiple frequencies attenuated above 4000Hz
- Warning signal is more directional and perceived to dissipate quicker than pure tone
- Smart Alarm models adjust output to 5dB above surrounding noise
- Sealed in epoxy for protection against dust, moisture, and vibration
- **MFA:** Multi-Frequency™ Alarm

40 SERIES GROMMET MOUNT



MODEL	TYPE	VOLTS	DECIBELS	AMPS
SA955	Smart	12-24	82-102	0.4
DF445	Dual-Function	12-24	102 Back-up & Dual-Tone	0.5

DESIGN FEATURES

- Grommet mount reduces installation time, requiring no tools
- Directs warning to rear of vehicle
- For use with standard 4.5" rear lighting grommet (order separately)

500 SERIES SURFACE MOUNT



MODEL	TYPE	VOLTS	DECIBELS	AMPS
SA951	Smart	12-48	77-97	0.2
SA950	Smart	12-24	82-102	0.4
505	-	12-24	87	0.1
580	-	12-80	87	0.1
510	-	12	97	0.2
520	-	12-24	97	0.2
585	-	12-48	97	0.1
530	-	12-24	102	1.0
575	-	12-24	107	0.9

DESIGN FEATURES

- Compact size and universal mounting bracket maximizes location options
- Self grounding (except 575)
- Sealed in epoxy for protection against dust, moisture, and vibration

600 SERIES SURFACE MOUNT



MODEL	TYPE	VOLTS	DECIBELS	AMPS
SA931N	Smart	12-48	82-102	0.2
SA901N	Smart	12-24	82-107	0.3
610N	-	12-36	97	0.4
630N	-	12-36	107	1.2

DESIGN FEATURES

- Reverse-mounted speaker enhances sound and protects the speaker from dust and moisture ingress
- Reinforced nylon housing eliminates corrosion damage
- Sealed in epoxy for protection against dust, moisture and vibration
- Steam cleanable and pressure washable
- Works on positive or negative ground systems

400 SERIES GROMMET MOUNT

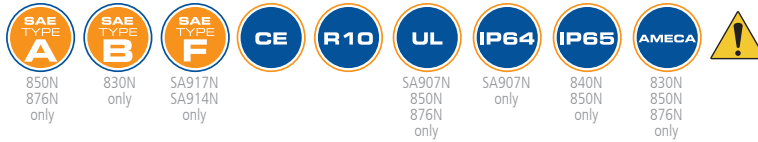


MODEL	TYPE	VOLTS	DECIBELS	AMPS
SA940	Smart	12-24	87-112	0.6
450	-	12-36	112	0.4

DESIGN FEATURES

- Grommet mount reduces installation time and directs warning to rear of vehicle
- For use with standard 4.5" rear-lighting grommet (order separately)
- Epoxy sealed for protection against dust, moisture and vibration

800 SERIES SURFACE MOUNT



MODEL	TYPE	VOLTS	DECIBELS	AMPS
SA907N	Smart	12-24	82-107	0.5
SA917N	Smart	12-24	87-112	1.5
SA914N	OEM Mounting	12-24	87-112	1.5
840N	-	12-36	97/112 Switchable	1.4
830N	-	12-36	107	1.1
850N	-	12-36	112	1.3
876N	OEM Mounting	12-36	112	1.3

DESIGN FEATURES

- Reverse-mounted speaker enhances sound and protects the speaker from dust and moisture ingress
- Reinforced nylon housing eliminates corrosion damage
- Sealed in epoxy for protection against dust, moisture and vibration
- Steam cleanable and pressure washable

700 SERIES SURFACE MOUNT



MODEL	TYPE	VOLTS	DECIBELS	AMPS
SA920	Smart	12-24	97-112	0.6
777	-	12-24	97/107/112 Switchable	0.8

DESIGN FEATURES

- Model SA920 supplied with grille plate
- Meets OEM design for rugged construction applications
- Sealed in epoxy for protection against dust, moisture, and vibration

200 SERIES SURFACE MOUNT



MODEL	TYPE	VOLTS	DECIBELS	AMPS
210	-	12	97	0.1

DESIGN FEATURES

- Designed for mounting in areas where a compact profile is required
- Universal mounting bracket covers a wide range of popular mounting applications

AUDIBLE SIGNALING DEVICES PANEL MOUNT



201120
209120-E
only



MODEL	TYPE	VOLTS	DECIBELS	AMPS
201120	Fast Pulse	12-48	80	0.1
202120	Slow Pulse	12-48	80	0.1
204120	Dual Mode	12-48	80	0.1
209120-E	Continuous	12-48	80	0.1
208120	Loud Continuous	12-36	86	0.1

DESIGN FEATURES

- Panel mount 1.25" hole
- Piezo electronic design provides very low amp draw

WARNING ALARMS SURFACE MOUNT



FH575
only

CT530-2LDW
DT500FP-LWC
FH575
FH577
only

DF532
DT500FP-LWC
CT530-2LDW
only

DT500
only

CT530-2LDW
FH575
FH577



DT500FP-LWC
DT500
DF532

MODEL	TYPE	VOLTS	DECIBELS	AMPS
DT500	Dual Tone	12-24	97	0.5
CT530-2LDW	Constant Tone	12-24	102	0.5
DT500FP-LWC	Dual Tone	12-24	102 Fast Pulse	0.9
DF532	Dual Function	12-24	102 Back-Up & Dual Tone	0.8
FH575	Forward Horn	12	107	0.5
FH577	Forward Horn	24-48	107	1.2

DESIGN FEATURES

- Sealed in epoxy for protection against dust, moisture and vibration
- Offers a wide variety of warning sounds

EC7010-WK GEMINEYE™ 7" QUAD VIEW LCD COLOR WIRELESS SYSTEM



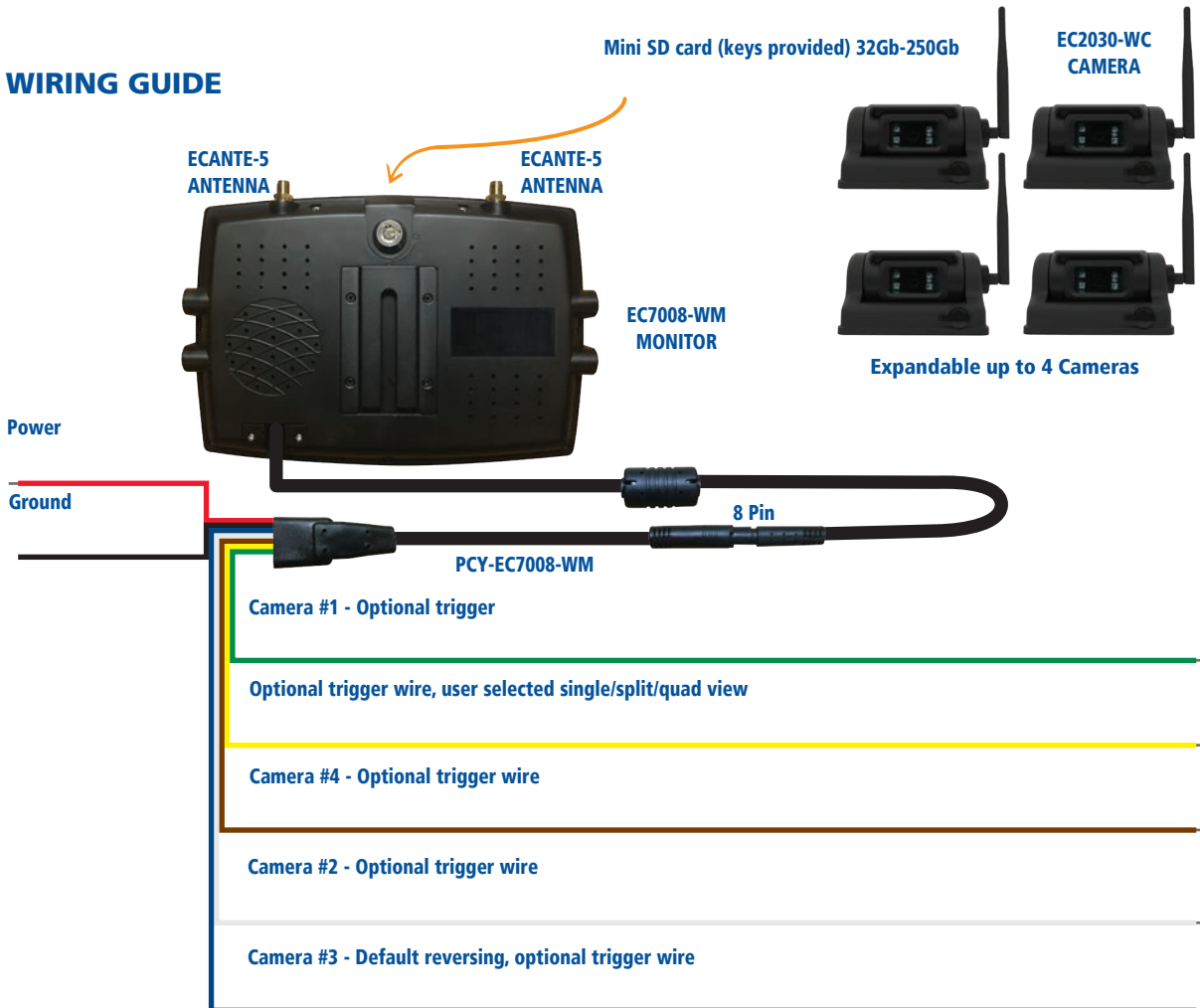
SOFT TOUCH BUTTONS ON MONITOR | AUTO PAIRING

MODEL	MONITOR	CAMERA
EC7010-WK	EC7008-WM	EC2030-WC

DESIGN FEATURES

- Wireless magnetic mount camera
- Mini SD card-enabled recording with password protection
- Multiple viewing options: single, split and quad view screen
- 2.4 Ghz digital wireless system
- Four camera expandable

WIRING GUIDE



EC7008-WK GEMINEYE™ 7" QUAD VIEW LCD COLOR WIRELESS SYSTEM



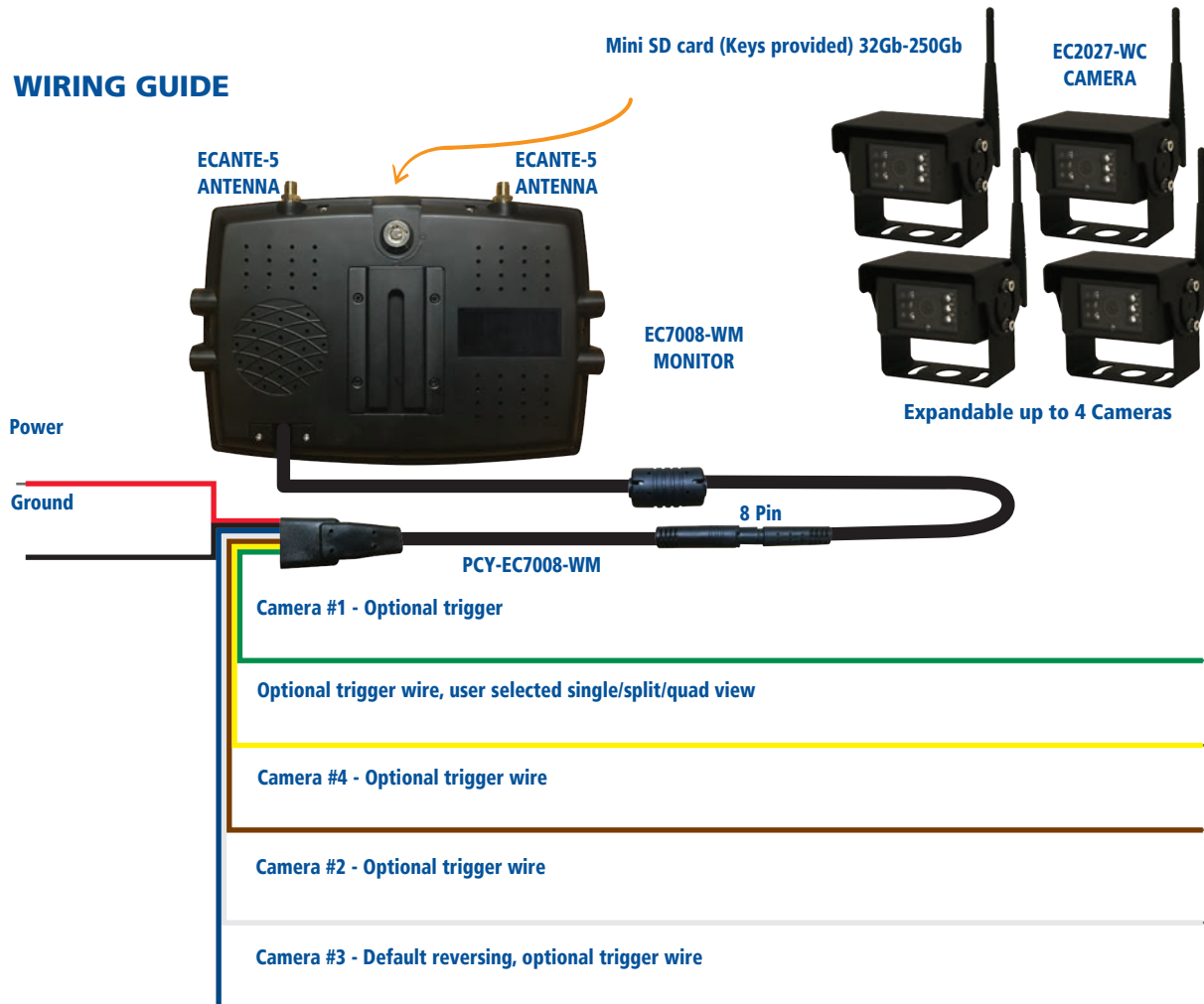
SOFT TOUCH BUTTONS ON MONITOR | AUTO PAIRING

MODEL	MONITOR	CAMERA
EC7008-WK	EC7008-WM	EC2027-WC

DESIGN FEATURES

- Mini SD card-enabled recording with password protection
- Multiple viewing options: single, split and quad view screen
- 2.4 Ghz digital wireless system
- Four camera expandable

WIRING GUIDE



EC5605-WK GEMINEYE™

5.6" LCD COLOR WIRELESS SYSTEM



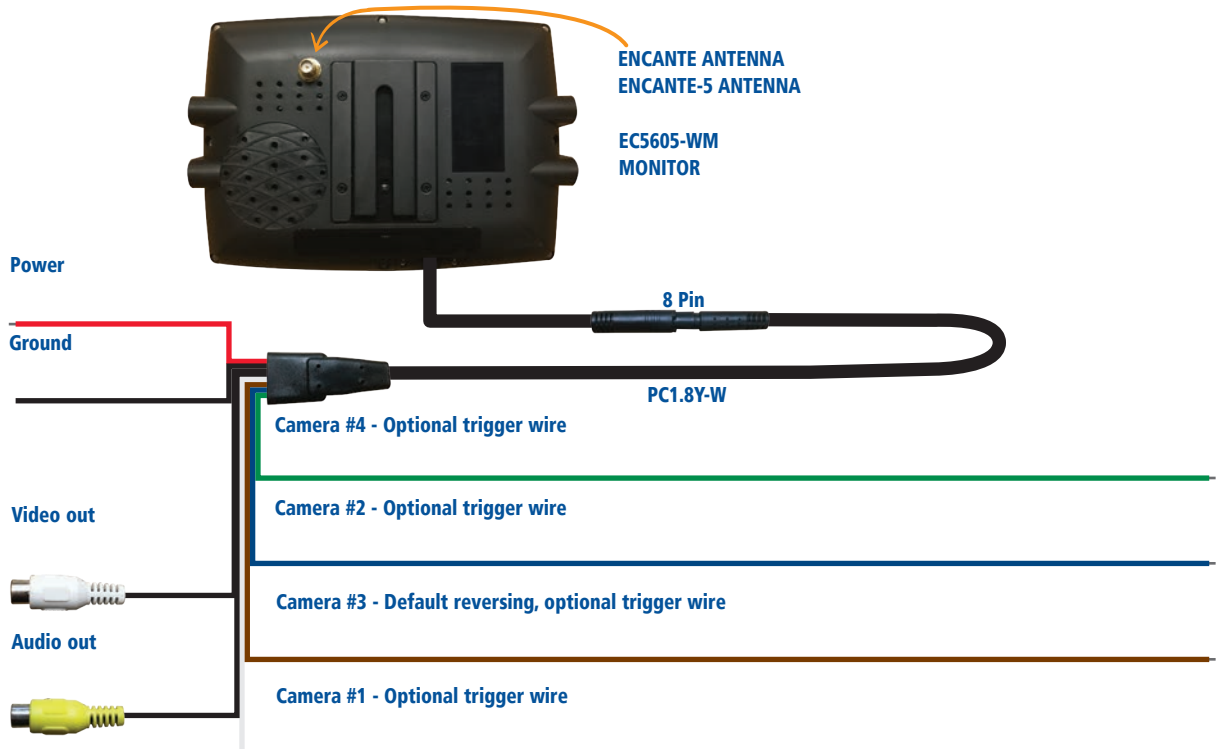
SOFT TOUCH BUTTONS ON MONITOR | MANUAL PAIRING

MODEL	MONITOR	CAMERA
EC5605-WK	EC5605-WM	EC2014-WC

DESIGN FEATURES

- 2.4 GHz digital wireless system
- CMOS 11 LED infrared camera
- Includes monitor sunshade
- Four camera expandable

WIRING GUIDE



EC7000-QK GEMINEYE™

7" QUAD VIEW LCD COLOR SYSTEM



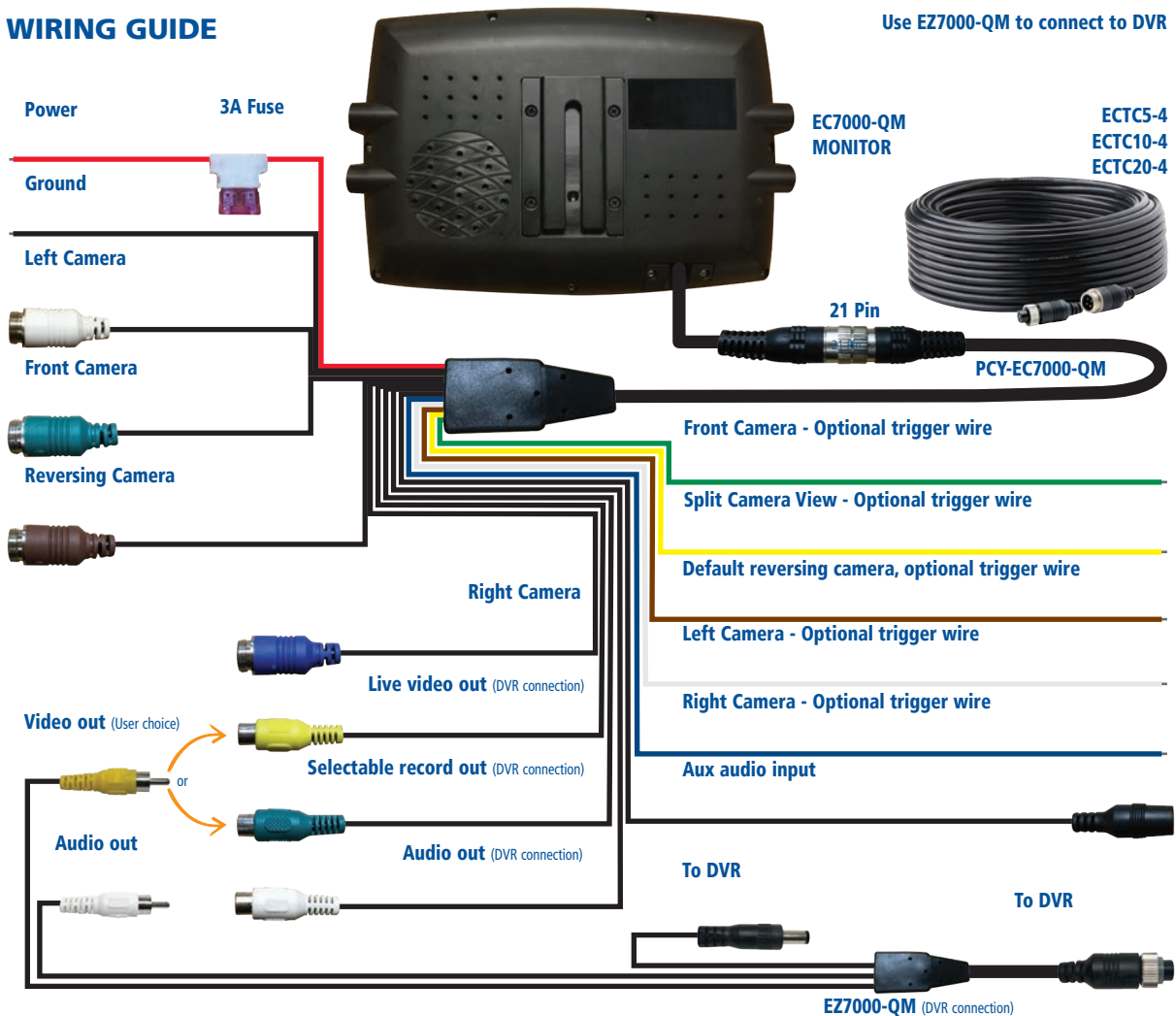
SOFT TOUCH BUTTONS ON MONITOR | **DVR COMPATIBLE WITH EZ7000-QM**

MODEL	MONITOR	CAMERA	CABLE
EC7000-QK	EC7000-QM	EC2014-C	ECTC20-4

DESIGN FEATURES

- Multiple viewing options: single, split and quad view screen
- CMOS 11 LED infrared camera
- Four camera expandable

WIRING GUIDE



EC7003-K GEMINEYE™

7" LCD COLOR SYSTEM



camera only

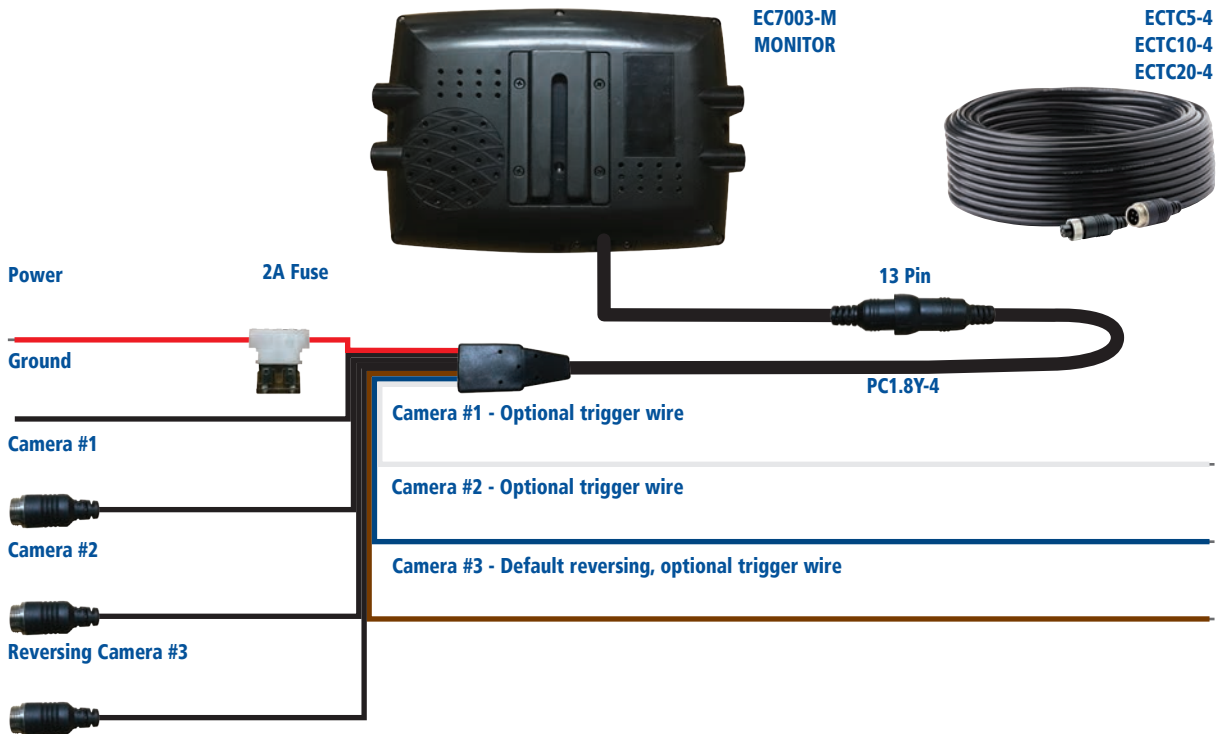
SOFT TOUCH BUTTONS ON MONITOR | INFRARED CAMERA

MODEL	MONITOR	CAMERA	CABLE
EC7003-K	EC7003-M	EC2014-C	ECTC20-4

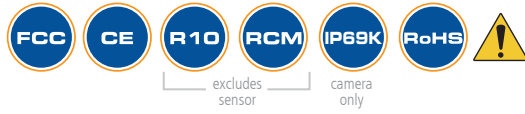
DESIGN FEATURES

- CMOS 11 LED infrared camera
- Includes monitor sunshade
- Three camera expandable

WIRING GUIDE



EC7004-SK GEMINEYE™ 7" LCD COLOR REVERSING SENSOR SYSTEM



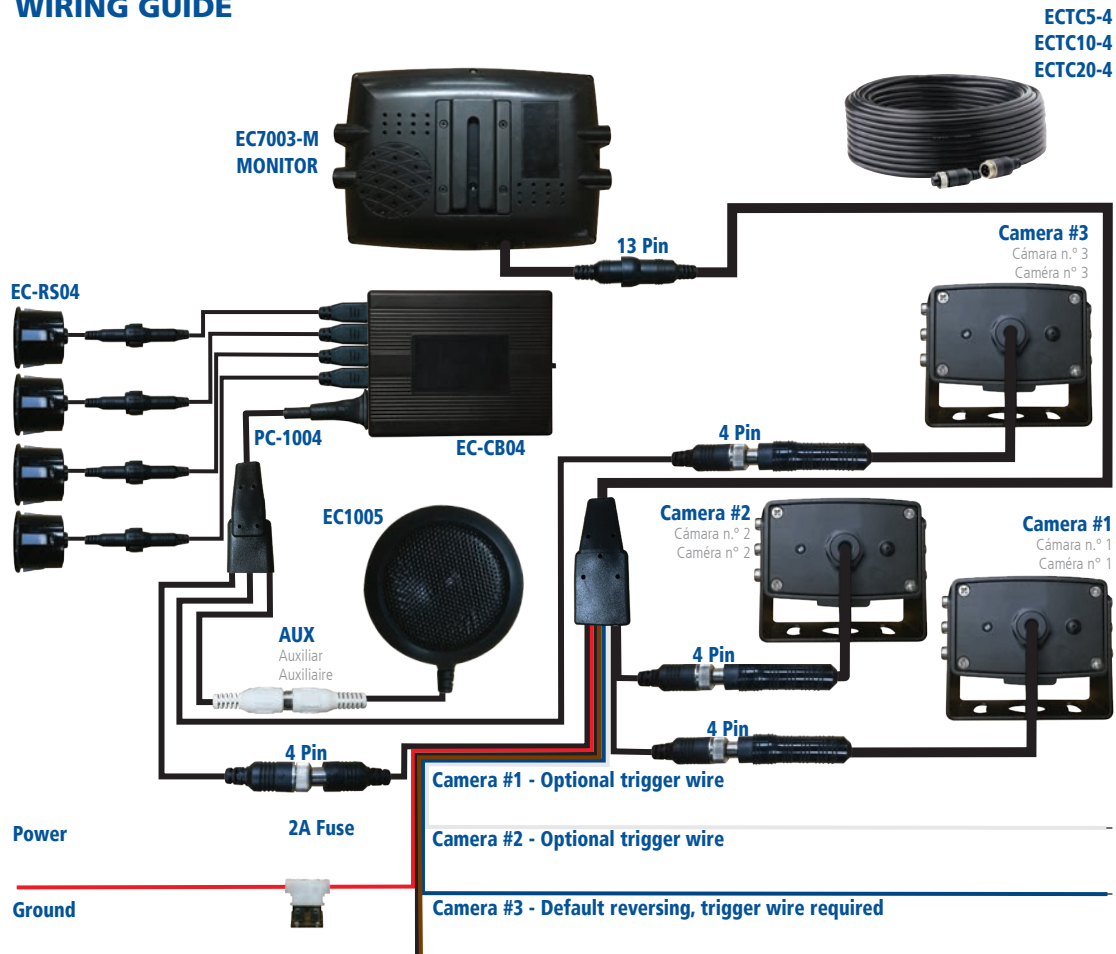
SOFT TOUCH BUTTONS ON MONITOR | INFRARED CAMERA

MODEL	MONITOR	CAMERA	CABLE	SENSOR
EC7004-SK	EC7003-M	EC2014-C	ECTC20-4	EC1004-SK

DESIGN FEATURES

- Widescreen monitor
- Integrated ultrasonic proximity sensors
- CMOS 11 LED infrared camera
- Three camera expandable

WIRING GUIDE



EC5604-SK GEMINEYE™

5.6" LCD COLOR REVERSING SENSOR SYSTEM



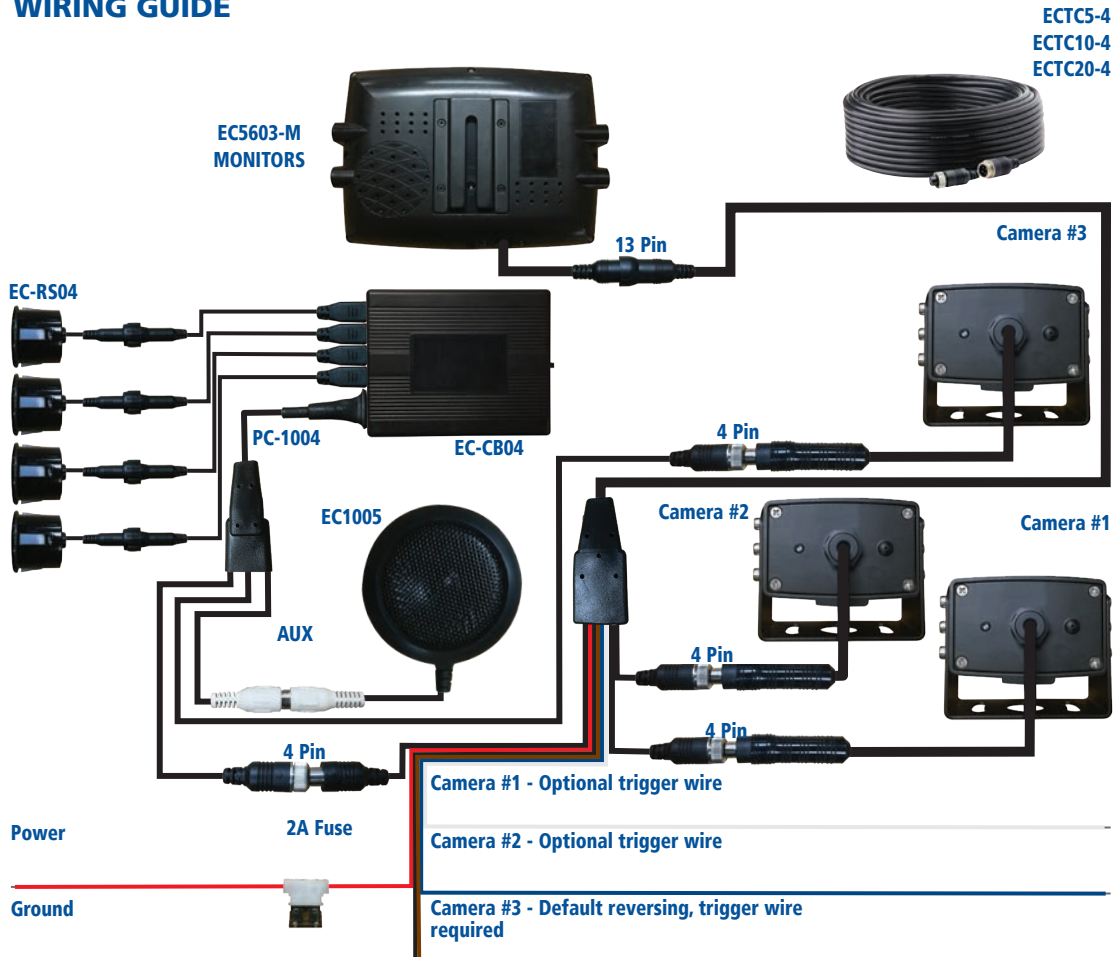
SOFT TOUCH BUTTONS ON MONITOR | INFRARED CAMERA

MODEL	MONITOR	CAMERA	CABLE	SENSOR
EC5604-K	EC5603-M	EC2014-C	ECTC20-4	EC1004-SK

DESIGN FEATURES

- Integrated ultrasonic proximity sensors
- CMOS 11 LED infrared camera
- Three camera expandable

WIRING GUIDE



EC5603-K GEMINEYE™ 5.6" LCD COLOR SYSTEM



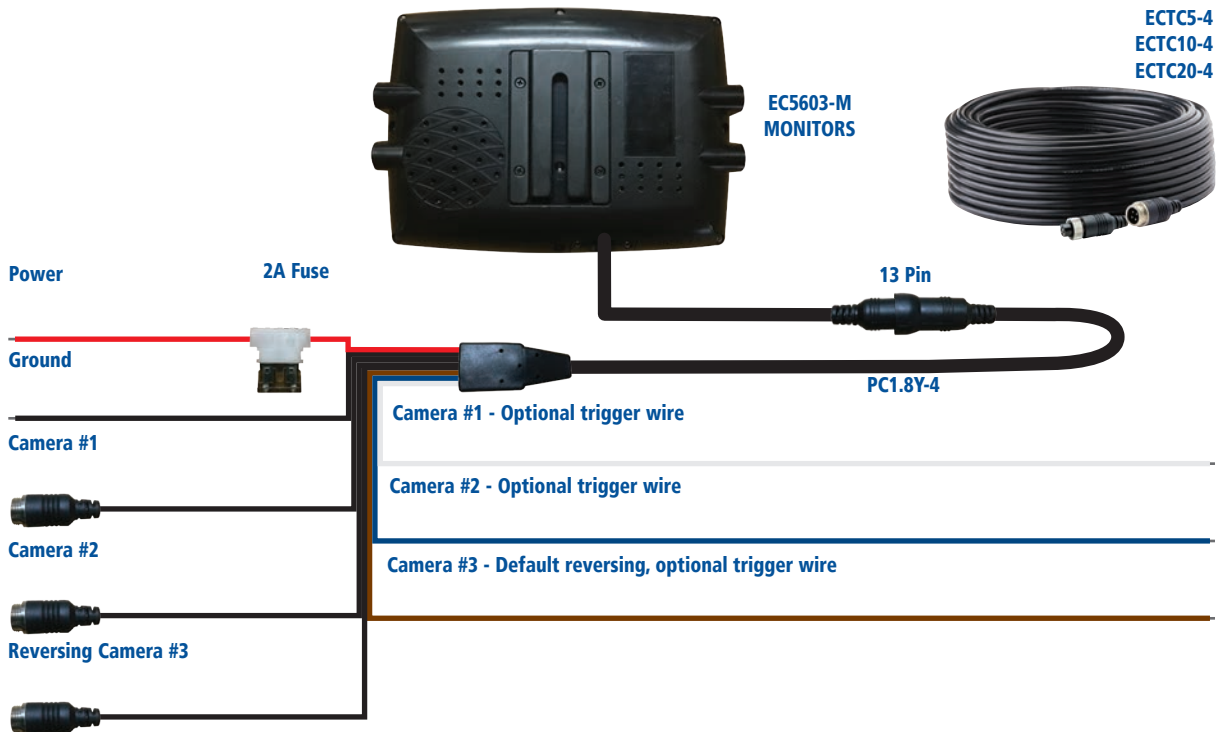
SOFT TOUCH BUTTONS ON MONITOR | INFRARED CAMERA

MODEL	MONITOR	CAMERA	CABLE
EC5603-K	EC5603-M	EC2014-C	ECTC20-4

DESIGN FEATURES

- CMOS 11 LED infrared camera
- Includes monitor sunshade
- Three camera expandable

WIRING GUIDE



EC4200-K GEMINEYE™ 4.3" LCD COLOR MIRROR SYSTEM



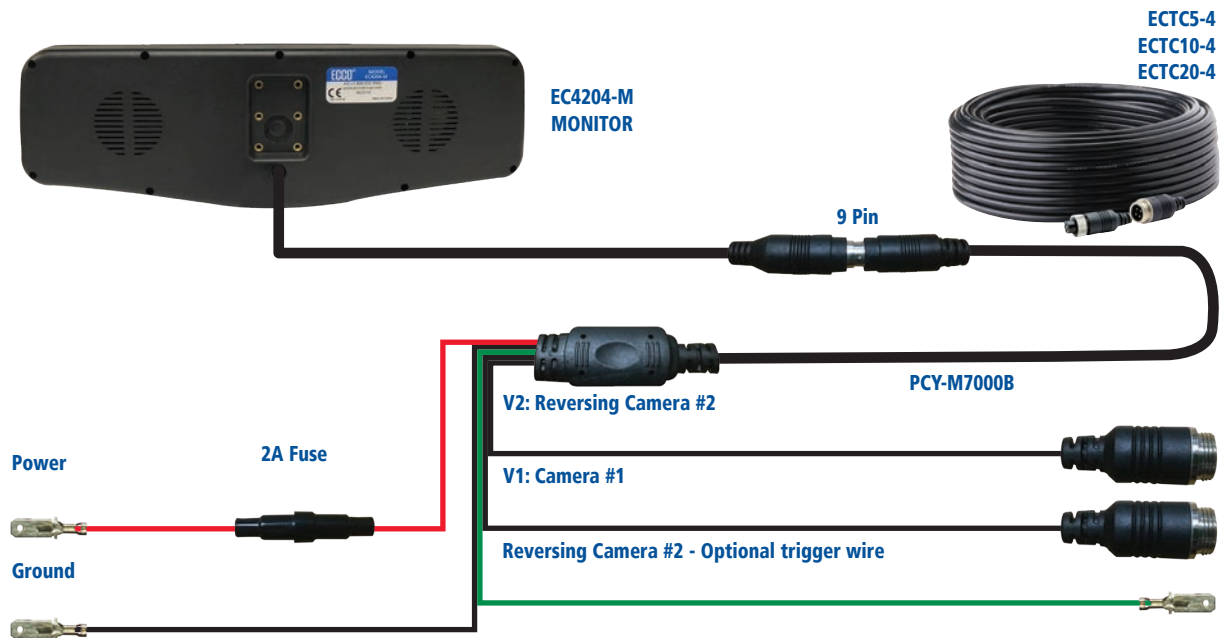
INTEGRATED MIRROR | **WINDOW MOUNT INCLUDED** | **FLUSH-MOUNT CAMERA**

MODEL	MONITOR	CAMERA	CABLE
EC4200-K	EC4204-M	EC2015-C	ECTC20-4

DESIGN FEATURES

- Non-commercial applications
- CMOS 10 LED infrared camera
- Two camera expandable

WIRING GUIDE





EC4204-SK GEMINEYE™

4.3" LCD COLOR MIRROR REVERSING SENSOR SYSTEM



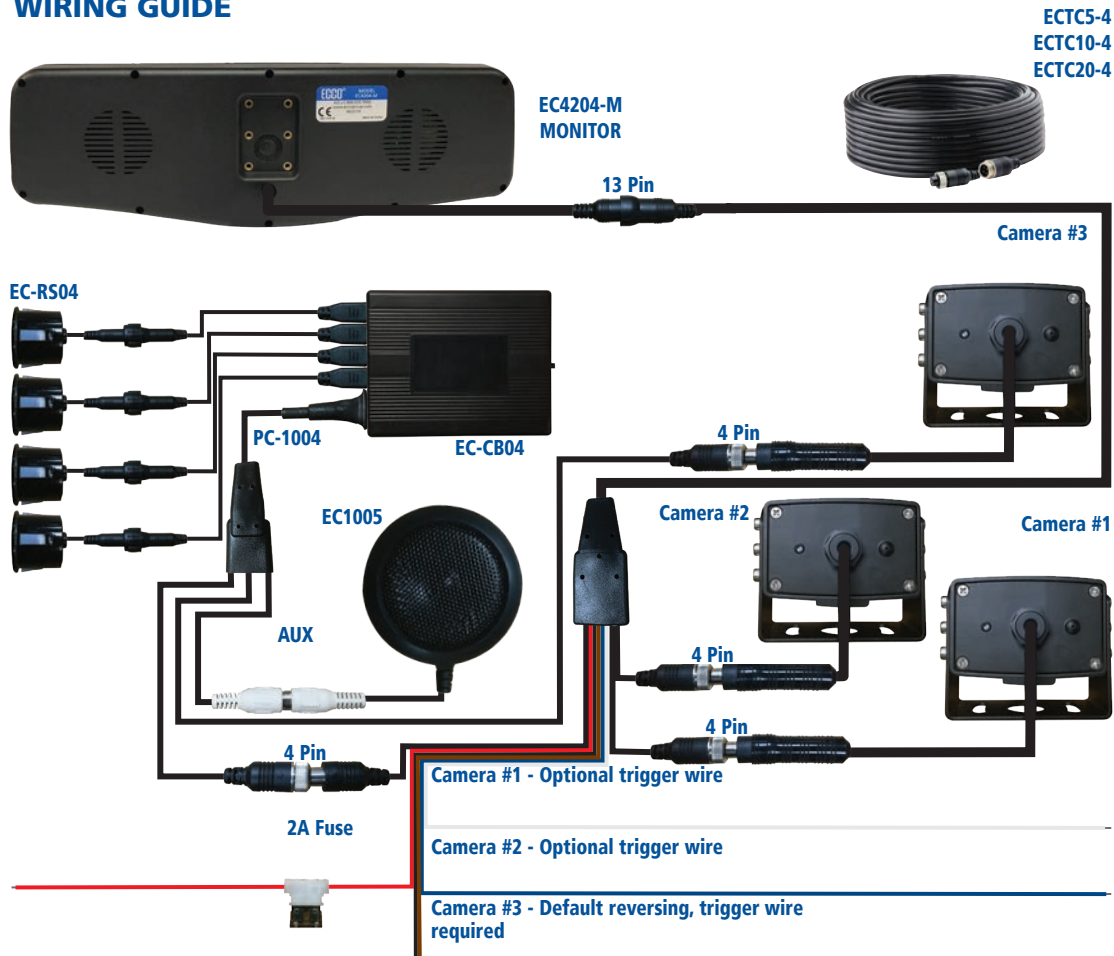
INTEGRATED MIRROR & SENSORS | **WINDOW MOUNT INCLUDED** | **FLUSH-MOUNT CAMERA**

MODEL	MONITOR	CAMERA	CABLE	SENSOR
EC4204-SK	EC4204-M	EC2015-C	ECTC20-4	EC1004-SK

DESIGN FEATURES

- Non-commercial applications
- CMOS 10 LED infrared camera
- Two camera expandable

WIRING GUIDE



K7000B GEMINEYE™ 7" LCD COLOR SYSTEM



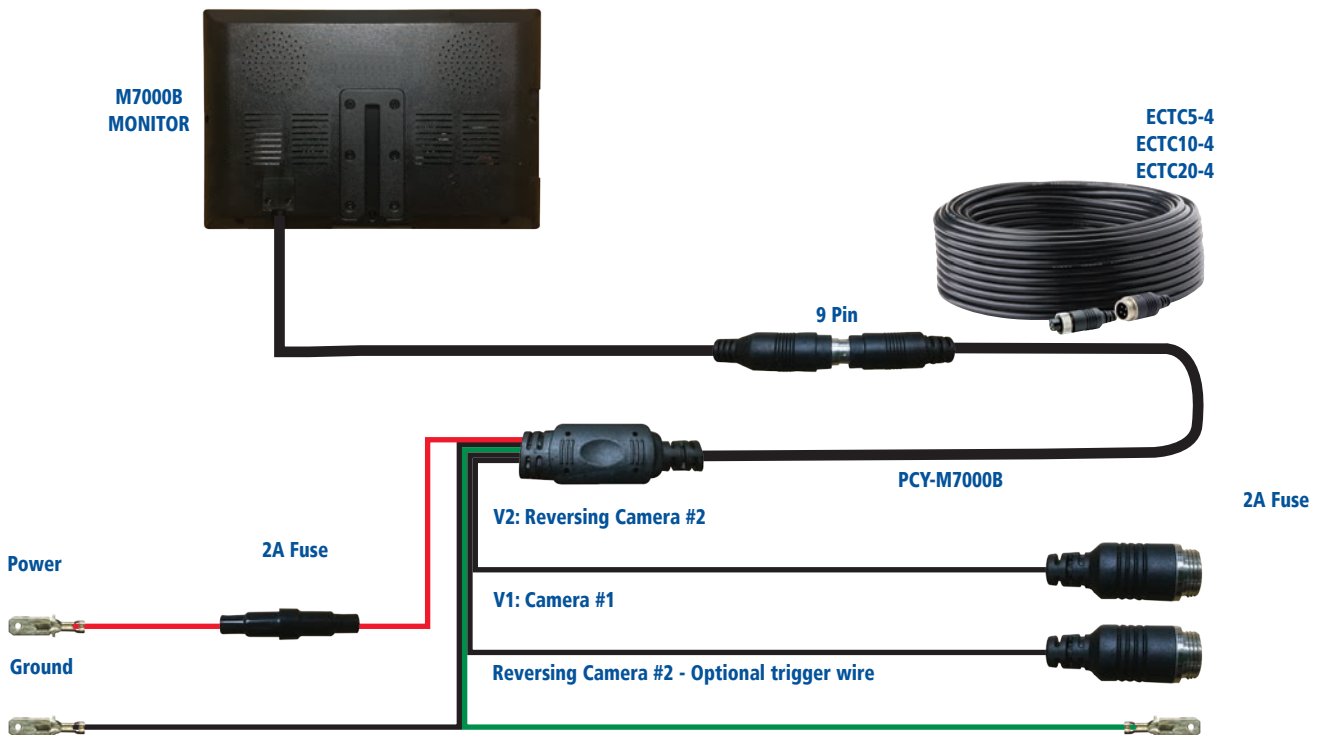
18 INFRARED LED | SUNSHADE INCLUDED

MODEL	MONITOR	CAMERA	CABLE
K7000B	M7000B	C2013B	ECTC20-4

DESIGN FEATURES

- Two camera expandable

WIRING GUIDE



EC5000B-K GEMINEYE™

5" LCD COLOR SYSTEM



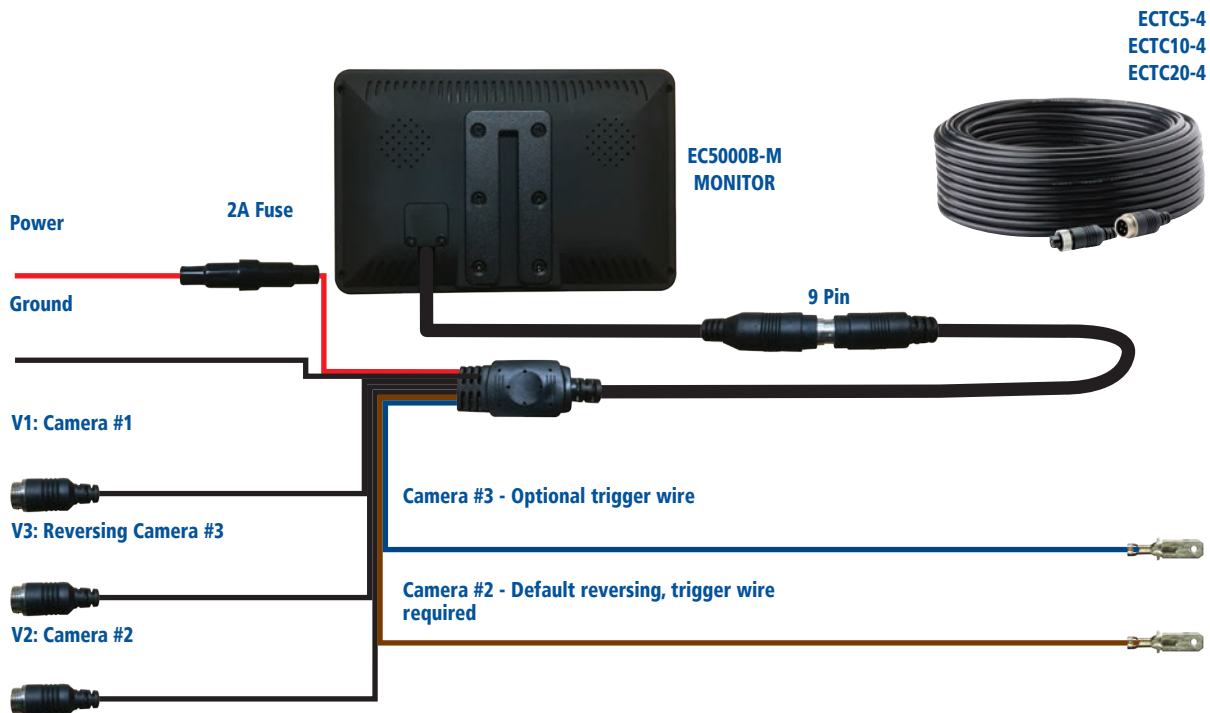
NO INFRARED | SUNSHADE INCLUDED

MODEL	MONITOR	CAMERA	CABLE
EC5000B-K	EC5000B-M	EC2020-C	ECTC20-4

DESIGN FEATURES

- Non-commercial applications
- Camera offers 170° view
- Three camera expandable

WIRING GUIDE





EC4210B-K GEMINEYE™ 4.3" LCD COLOR MIRROR SYSTEM



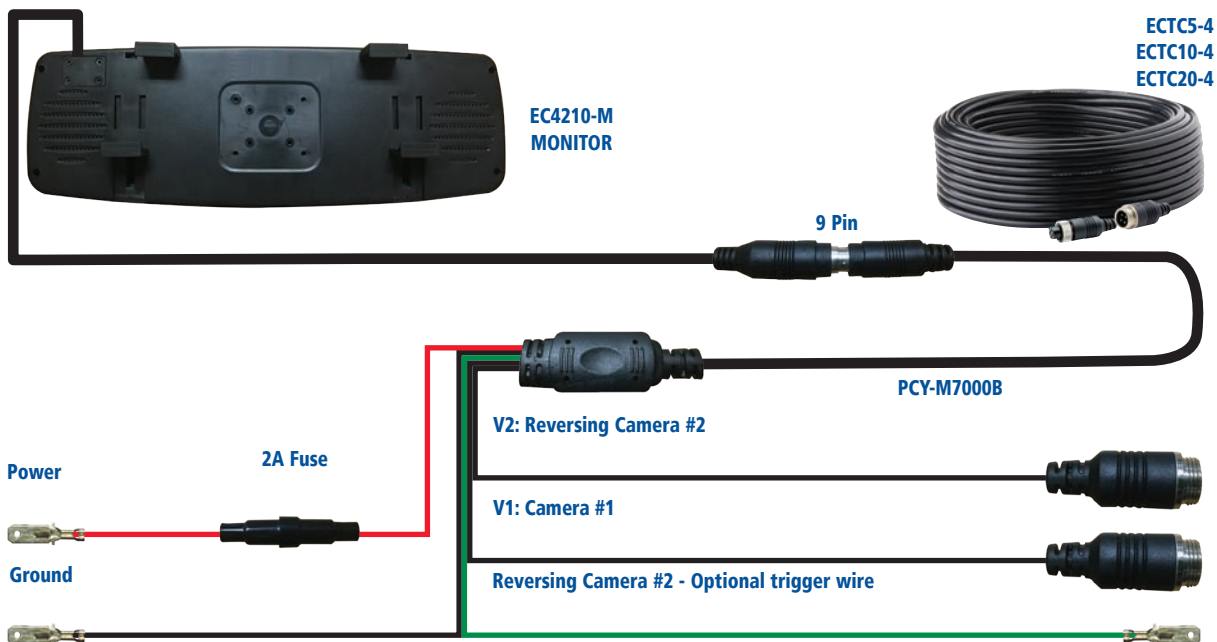
CLIP-ON MOUNT | NO INFRARED | LICENSE PLATE BRACKET

MODEL	MONITOR	CAMERA	CABLE
EC4210B-K	EC4210B-M	EC2026-C	ECTC20-4

DESIGN FEATURES

- Non-commercial applications
- Mirror-integrated monitor
- License plate mount camera
- Two camera expandable

WIRING GUIDE



MONITORS



	EC4204-M	EC4210B-M	EC5603-M	EC5605-WM
approvals	FCC, CE, RoHS	FCC, CE, RoHS	FCC, CE, R10, RCM, RoHS	FCC, CE, R10, RoHS
internal controller	Yes	Yes	Yes	Yes
color	Yes	Yes	Yes	Yes
voltage	12-24	12-24	12-24	12-24
power consumption (watts)	4.6	4.8	5	8
audio	Yes	No	Yes	Yes
day / night light sensor	Yes	-	Yes	Yes
dimensions	11.03" x 3.6" x 1.2"	10.2" x 3.5" x 0.8"	6.32" x 4.52" x 1.06"	6.32" x 4.51" x 1.06"
weight	1.32 lbs	0.9 lbs	1.9 lbs	1.9 lbs
temperature (F°)	-4 to +158	-4 to +149	-4 to +158	-4 to +158
screen size	4.3"	4.3"	5.6"	5.6"
quad view	-	-	-	-
mirror image	-	-	Yes	Yes
remote control	Yes	Yes	Yes	Yes
sunshade	-	-	Yes	Yes
max cameras	2	2	3	4
4 pin camera connection	Yes	Yes	Yes	-

**EC5000B-M****EC7003-M****EC7000-QM****EC7008-WM****M7000B**

FCC, CE, RoHS	FCC, CE, R10, RCM, RoHS	FCC, CE, RoHS	FCC, CE, R10, RoHS	CE, RoHS
Yes	Yes	Yes	Yes	Yes
Yes	Yes	Yes	Yes	Yes
12-24	12-24	12-24	12-24	12-24
2.6	6.0	6.4	6.0	5.0
-	Yes	Yes	Yes	-
No	Yes	Yes	Yes	Yes
5.2" x 3.5" x 2.0"	8.4" x 6" x 2.8"	8.4" x 6" x 2.8"	8.4" x 6" x 2.8"	6.85" x 4.49" x 0.94"
0.8 lbs	1.8 lbs	1.8 lbs	2.1 lbs	0.88 lbs
-4 to +150	-4 to +158	-4 to +158	-4 to +158	-4 to +158
5.0"	7.0"	7.0"	7.0"	7.0"
-	-	Yes	Yes	-
-	Yes	Yes	Yes	Yes
Yes	Yes	Yes	Yes	-
Yes	Yes	Yes	Yes	Yes
3	3	4	4	2
Yes	Yes	Yes	-	Yes

ONLY Compatible with EC5605-WM

ONLY Compatible with EC7008-WM

CAMERAS

ONLY Compatible with EC7008-WM



EC2030-WC

EC2014-C

EC2014-WC

EC2027-WC

approvals	FCC, CE, RoHS, IP67,EU-RED, UN/DOT 38.3	IP69K, FCC, CE, R10, RCM, RoHS	IP69K, FCC, CE, R10, RoHS	IP69K, FCC, CE, R10, RoHS
color	Yes	Yes	Yes	Yes
discharging time	10 hours (continuous on)	-	-	-
charging time	6 hours	-	-	-
power consumption	-	3.0	1.4	1.7
microphone	Yes	Yes	Yes	Yes
day / night light sensor	Yes	Yes	Yes	Yes
dimensions	4.6" x 2.6" x 3.2"	2.87" x 2.99" x 2.60"	2.87" x 2.99" x 2.98"	3.8" x 2.8" x 2.6"
weight	1.38 lbs	0.74 lbs	0.89 lbs	1 lbs
temperature (F°)	-22F to +158F	-22 to +158	-4 to +158	-4 to +158
lens angle	120°	120°	120°	120°
lens size	120m	1/3"	1/3"	1/3"
Infrared LEDs	4	11	11	12
4 pin camera connection	-	Yes*	-	-
operation frequency	2400-2483.5 MHz	-	-	-
standby mode	30 seconds of inactivity	-	-	-
video codec	AVI	-	-	-

* threaded connection



C2013B



EC2026-C



EC2022-C



EC2015-C



EC2020-C

IP69K, FCC, CE, RoHS

IP69, FCC, CE, RoHS

IP69K, FCC, CE, R10,
RCM, RoHS

IP67, FCC, CE, RoHS

IP69, RoHS

Yes

Yes

Yes

Yes

Yes

-

-

-

-

-

-

-

-

-

-

1.0

1.8

1.3

< 1.0

2.0

-

-

-

-

-

Yes

-

Yes

Yes

-

2.92" x 3.01" x 2.62"

7.7" x 1.9" x 1.6"

12.3" x 6.3" x 1.2"

1.69" x 1.24" x 1.1"

0.9" x 0.9" x 0.9"

0.6 lbs

0.16 lbs

0.73 lbs

0.14 lbs

0.11 lbs

-22 to +158

-22 to +158

-22 to +158

-22 to +158

-22 to +158

120°

170°

150°

120°

170°

1/4"

3/5"

3/5"

-

3/5"

18

-

4

10

-

Yes*

Yes*

Yes*

Yes*

Yes*

-

-

-

-

-

-

-

-

-

-

-

-

-

-

-



REVERSING SAFETY ACCESSORIES

ACCESORIOS DE SEGURIDAD DE RETROCESO | ACCESSOIRES DE SÉCURITÉ EN MARCHE ARRIÈRE

ALARM ACTIVATION

ACTIVACIÓN DE ALARMA | ACTIVATION D'ALARME



DS-1500
DRIVE LINE SENSOR
USED WITH BACK-UP ALARMS



SW10
ELECTRO-MECHANICAL
ACTUATION SWITCH
USED WITH BACK-UP ALARMS



SW15
ELECTRO-MECHANICAL
ACTUATION SWITCH
USED WITH BACK-UP ALARMS



SW30
ELECTRO-MECHANICAL
ACTUATION SWITCH
USED WITH BACK-UP ALARMS

MONITOR MOUNTING

MONTAJE DE MONITOR | MONTAGE DU MONITEUR



MB01
ADHESIVE
USED WITH 5.0", 5.6" & 7.0"



MB03
3 BOLT
USED WITH 5.6" & 7.0"

WIRELESS MODULES



ECANTE-R
REMOTE ANTENNA
(3M CABLE)
USED WITH EC5605-WK



ECANTE
REPLACEMENT
ANTENNA - 5"
USED WITH EC1000-WMK,
EC5605-WM, EC2014-WC



ECANTE-BWC
REPLACEMENT
ANTENNA - 5"
USED WITH EC2030-WC



ECANTE-5
REPLACEMENT
ANTENNA - 7"
USED WITH EC1000-WMK,
EC5605-WM, EC2014-WC



EC1000-WMK
12-24V, 5A | IP69K, -4° TO
+140° F | 0.75 LBS | 4.13" X
4.10" X 1.01"
CONVERTS EC5603-K &
EC7003-K TO WIRELESS



REVERSING SAFETY ACCESSORIES

CABLES



EZ7000-QM
DUAL MONITORS ONLY
USED WITH EC7000-QM



ECTT-10-01 - 10M/32' (1 CAMERA)
ECTT-10-02 - 10M/32' (2 CAMERA)
ECTT-20-01 - 20M/65' (1 CAMERA)
ECTT-20-02 - 20M/65' (2 CAMERA)
FOR USE WITH ANY CURRENT ECCO CAMERA



ECTC5-4 - 5M/16' (4 PIN)
ECTC10-4 - 10M/32' (4 PIN)
ECTC20-4 - 20M/65' (4 PIN)
CAMERA TRANSMISSION CABLES
FOR USE WITH ANY CURRENT ECCO CAMERA

Tractor to trailer socket connector
(7 to 4 pin monitor to curly = 5m/16')

Kits include a short Y-type wiring harness. An additional camera and transmission cable (ECTC20-4) are required to expand the kit to multiple cameras.

POWER / TRIGGER / TRANSMISSION HARNESSES CABLES



PC1.8Y-W
6'7" (FEMALE 8)
USED WITH EC5605-WM MONITOR



PCY-M7000B
5' (MALE 4 / MALE 9)
USED WITH M7000B MONITOR



PC1.8Y-4
6' (MALE 4 / FEMALE 13)
USED WITH EC5603-M, EC7003-M MONITORS



PCY-EC7000-QM
3' (MALE 4 / FEMALE 22)
USED WITH EC7000-QM MONITOR



PCY-7008-WM
6'5" (MALE 8)
USED WITH EC7008-WM MONITOR

SYNC CHART

THIS GROUP OF PRODUCTS WILL SYNC TOGETHER WHILE ON THE SAME FLASH PATTERN:



5545
SAE CLASS I
35 FP



5550
SAE CLASS I
91 FP



5585/87
SAE CLASS I
18 FP



EB7180
SAE CLASS I
8 FP



EB7185
SAE CLASS I
24 FP



EB7260
SAE CLASS II
41 FP



EB7265
SAE CLASS I
41 OR 96 FP



3811
SAE CLASS I
7 FP



ED3701
SAE CLASS I
13 FP



ED3702
SAE CLASS I
12 FP



ED3703
SAE CLASS I
21 FP



ED3704
SAE CLASS I
22 OR 30 FP



ED3705
SAE CLASS I
30 FP



ED3706
SAE CLASS I
13 FP



ED3712
SAE CLASS I
12 OR 24 FP



ED3766
SAE CLASS I
12 FP



ED3777
SAE CLASS I
13 FP



ED5051
SAE CLASS I
18 OR 36 FP



ED9040
SAE CLASS I
29 OR 69 FP

THIS GROUP OF PRODUCTS WILL SYNC TOGETHER WHILE ON THE SAME FLASH PATTERN:



5590/97
SAE CLASS I
18 FP



3510
SAE CLASS I
16 FP



3931
SAE CLASS I
16 FP



3932
SAE CLASS I
16 FP



HALS
HIDE-A-LED™
16 FP

Each product will sync with other products in the same group when set to the same flash pattern. However, products will not sync with the other group.

STROBE TO LED TECHNOLOGY CONVERSION CHART

STROBE BEACON SERIES	DESCRIPTION	COMPARABLE LED BEACON SERIES
6220	Low-Intensity Strobe	6262
6410	Low-Intensity Strobe	6465
6550	SAE Class II Strobe	7945
6570	SAE Class II Strobe	7950
6650	SAE Class II Strobe	7965
6670	SAE Class II Strobe	7970
6690	SAE Class II Strobe	7960 / 7970
6710	SAE Class II Strobe	EB7930
6720	SAE Class II Strobe	EB7935
6750	SAE Class II Strobe	7975
6770	SAE Class II Strobe	7980
6950	SAE Class I Strobe	7965
6970	SAE Class I Strobe	7970
6990	SAE Class I Strobe	7960

STROBE MINIBAR SERIES	DESCRIPTION	COMPARABLE LED MINIBAR SERIES
420	(ECCO, CODE 3) Roto Minibar	5280 / 5550
5111	Preco Branded Strobe Minibar, 12-48V, 18Joule, Double	5580
5112	Preco Branded Strobe Minibar, 12-48V, 20Joule, Quad, VM	5580
5121	Preco Branded Strobe Minibar, 12-48V, 18Joule, Double	5580-VM
5122	Preco Branded Strobe Minibar, 12-48V, 20Joule, Quad, VM	5580-VM
5135	Rotating Minibar, Blaze2, 15", 12V	5280 / 5550 / 5597 / 5587
5150	Strobe Minibar, Blaze2, 15", 12-24	5280 / 5585 / 5587 / 5590 / 5597
5211	Preco Branded Halogen Minibar, 24V, Rotator 240FPM	5280 / 5597 / 5550
5213	Preco Branded Halogen Minibar, 24V, 525FPM	5280 / 5597 / 5550
5214	Preco Branded Halogen Minibar, 24V, 525FPM	5280 / 5597 / 5550
5221	Preco Branded Halogen Minibar, 24V, 525FPM, VAC MAG	5280X-VM / 5597X-VM / 5550X-VM
5222	Preco Halogen Minibar, 24V, VAC MAG MNT W/12' STR	5280X-VM / 5597X-VM / 5550X-VM
5315	Rotating Minibar, 15", 100 RPM	5280 / 5597 / 5550
5325	Lightbar, 15", 24 VDC, 300 FPM	5280 / 5597 / 5550
5335	Blaze Bar, 2-MOD	5280 / 5597 / 5550
5350	Strobe Minibar, Blaze2, 15", 12-24	5280A / 5580A / 5585
6015	LP Beacon, 2 Rotator, Mirror	5280 / 5550 / 5597 / 5587
6105	Rotator Minibar	5280 / 5550 / 5597 / 5587

GONDOLA SHELVES: Black metal | 6 shelving options | Illuminated switches

12"x36" / 12"x48"
Headercard
w/ Clips



**DEPENDABILITY
ON THE
ROAD OF
UNCERTAINTY**

5"x36" / 5"x48"
Graphic
w/ Frame



**BEACON
SHELF**
Holds
1 product

**DIRECTIONAL
SHELF**
Holds
2 products

**MINIBAR
SHELF**
Holds
1 product

WORKLIGHT SHELF
Holds
3 products

**CAMERA
SHELF**
Holds
(1) monitor +
(1) camera

**ALARM
SHELF**
Holds
2 products

24x36 / 24x48
Repositionable
Graphic

ECCO SAFETY SOLUTIONS