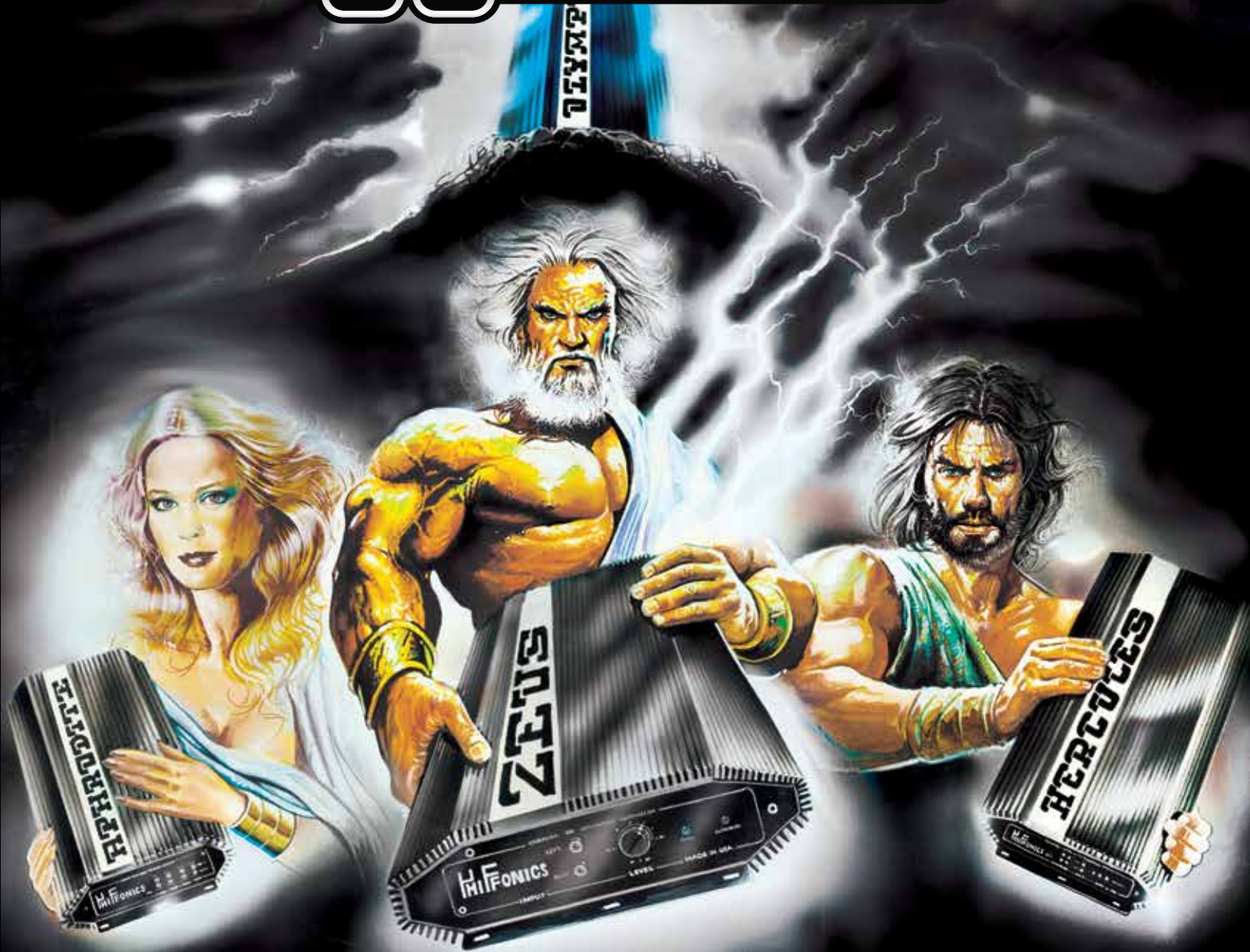


**35<sup>TH</sup> ANNIVERSARY**  
E D I T I O N



2016

**HIFONICS<sup>®</sup>**  
Product Line

**35<sup>TH</sup> ANNIVERSARY**  
E D I T I O N

**HIFONICS<sup>®</sup>**  
**POWER**  
**FROM THE**  
**GODS**  
**SINCE 1981**

# TABLE OF CONTENTS

35th Anniversary Super Amplifiers 3

## ELITE

- Brutus Elite BE35 Amplifiers 7

- Zeus Elite ZEX Amplifiers 11

- Brutus Elite Speakers 15

- Brutus Elite Subwoofers 17

Thor Powersports 19

Hercules H35 Amplifiers 21

Brutus BRX Amplifiers 23

Zeus ZRX Amplifiers 27

Brutus Subwoofers 31

Hercules Subwoofers 33

Hercules Speakers 34

Signal Processors 35



# The Hifonics SUPER AMPS

The 35th Anniversary of Power From The Gods and Hifonics are celebrated with throwback competition amplifiers. CEA certified RMS amplifiers. Three models are offered to create the perfect system design. A Large Ultra D Class™ dual mono, a standard Ultra D Class™ mono and a four channel Super A/B Class™. Here is the break down.

The entire line up is designed with an old school heatsink that harkens back to the beginning of the car audio revolution, but now Hifonics is twisted with new technology and features that make these Super Amps the best.

**35<sup>TH</sup> ANNIVERSARY**  
EDITION



## Colossus 35th Anniversary

The Colossus celebrates the 35th Anniversary of Hifonics with a CTA certified super amp. The Colossus uses the Hifonics engineer's technology, Ultra D Class™ in a Dual Mono block subwoofer amplifier that will deliver 3400 watts RMS.

## Colossus Dual Mono Ultra D-Class™

The Colossus represents Hifonics best signal processing and control features designed for a big mono amplifier. Key among them are the Dual Mono Ultra D-Class™ topology which helps the Colossus develop huge power while minimizing voltage strain. The "Dual" means there are literally two amplifiers in one heat sink for system designs that need to develop large power without giving up additional space.

The ParaQ circuit allows full parametric control of the bass equalizer which can be controlled by the diagnostic bass remote. Additionally, there are variable subsonic and low pass electronic filters.



Tiffany Style connectors for audiophile signal quality and maximum signal throughput



Powerful transformers, audiophile grade components, military grade circuit boards



Twin turbo power supply torroids in a PWM MOSFET power supply design



Rock solid Ultra-Fi™ MOSFET outputs





### Goliath 35th Anniversary

The Goliath uses the same Ultra D Class™ circuit topology, but in a traditional mono design. Perfect for system designs where big clean power is needed without the additional size of the Colossus

### Goliath Ultra D-Class™ Mono Block

Goliath is a traditional mono amplifier designed around Hifonics Ultra D-Class™ topology. Similar to Colossus in design, the Goliath allows Multiple Goliath mono amplifiers to be strapped together utilizing the Master/Slave feature to create a large subwoofer system that will well exceed 6000 watts RMS. (Two Amplifiers)

Goliath uses the same ParaQ circuit to control the bass equalization. Colossus, Goliath and Helios offer an additional output set of RCA jacks to eliminate the need for splitter cables. Again, the Hifonics engineers try and eliminate the additional signal paths that can affect sound quality by raising distortion levels.



### Helios 35th Anniversary

Rounding out the trio of Super Amps is the Helios. The same power efficiency of the larger amplifiers but specifically engineered in to four channels of Super A/B Class™ technology to add incredible sound quality standard while providing enough power to upper frequencies to perfectly balance a full system.

### Helios Super A/B Class™

Helios is a very special amplifier. The same Short Path philosophy applies, but being a four channel amplifier, designed to balance the muscle of the Colossus or Goliath, requires some unique circuit designs. First, this is a four channel Super A/B Class™ circuit topology. This means, sound quality comes first but, the power must be as efficient as the Ultra D and Super D Class Amplifiers. Notice the MODE switch, this allows for 2 Channel or 4 channel operation with the amplifier easily bridgeable or operated in three channel mode.



# 35<sup>TH</sup> ANNIVERSARY E D I T I O N



### Colossus

- Output Power Watt
  - 4-Ohms
  - 2-Ohms
  - 1-Ohm2
- Mono Bridged @ 2-Ohms
- Mono Bridged @ 4-Ohms
- Variable Low-Pass
- Variable Subsonic Filter
- Bass EQ
- Remote Level Control

### CEA Rated Specifications

- <1% THD
- 2 x 650 RMS / 2 x 1300 Peak
- 2 x 1200 RMS / 2 x 2400 Peak
- 1 x 1700 RMS / 2 x 3400 Peak
- 1 x 3400 RMS / 1 x 6800 Peak
- 1 x 2400 RMS / 1 x 4800 Peak
- 35Hz-250Hz
- 15Hz-35Hz
- Parametric
- 30-100Hz / Wide-Narrow / 0-10dB
- Yes



### Diagnostic Bass Remote

All three Hifonics SUPER AMPS include a specialized Bass Remote that allows remote adjustment of the ParaQ bass remote feature. Also critical is the Diagnostic ability of viewing the amplifier status on the L.E.D.'s of the remote.



Hifonics SUPER AMPS are CTA certified. The former CEA (Consumer Electronics Association) is now the CTA, Consumer Technology Association. CTA-2006-B requires testing for RMS at minimal distortion.

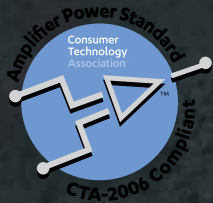




### Goliath

### CEA Rated Specifications

	<b>&lt;1% THD</b>
Output Power Watt	
1-Ohm	1 x 3000 RMS / 1 x 6000 Peak
2-Ohms	1 x 1500 RMS / 1 x 3000 Peak
4-Ohms	1 x 750 RMS / 1 x 1500 Peak
Variable Low-Pass	35Hz-250Hz
Variable Subsonic Filter	15Hz-35Hz
Bass EQ	Parametric
Remote Level Control	30-100Hz / Wide-Narrow / 0-10dB
	Yes



### Helios

### CEA Rated Specifications

	<b>&lt;1% THD</b>
Output Power Watt	
4-Ohms4	x 150 RMS / 4 x 300 Peak
2-Ohms4	x 300 RMS / 4 x 600 Peak
1-Ohm	N/A
Mono Bridged @ 2-OhmsN	/A
Stereo Bridged @ 4-Ohms2	x 600 RMS / 2 x 1200 Peak
Variable Hi-Pass1	0Hz-500Hz (1x/10x)
Variable Low-Pass	30Hz-500Hz (1x/10x)
Crossover Switch H	P/FULL/LP
Remote Level Control	Yes

# Brutus ELITE 35th Anniversary

The ELITE dealer is the ONLY place to choose Hifonics ELITE amplifiers, subwoofers or speakers. ELITE Dealers have the training and experience to help design and install your system perfectly. Do not purchase ELITE products from the internet. ELITE product is only authorized for ELITE dealers. Any purchase from an online dealer or auction site is an unauthorized dealer and it will affect your warranty.  
The BE35 amplifiers continue...



## Super D-Class™

Super D-Class™ digital technology has been engineered for the 35th Anniversary mono amplifiers to provide an extremely efficient, low temperature, high amplification system that others only dream about – this is the sound of Hifonics big amplifiers.

There are several options for installation and the mono Super D-Class Brutus Elite amplifiers can run at 4, 2 or 1-Ohm for tighter bass response while amplifiers run cool and maximize the voltage from the cars electrical system!

## Super A/B Class™

For customers building larger systems with multiple four channel and mono amplifiers, the Brutus Elite have flexible crossovers and EQ controls to tailor the install and shape the audio signal for each amplifier. To aide in system set up, the BE35 line has variable voltage from 6 volts to 0.2 volts. Additionally, the Super D-Class amplifiers include variable subsonic and low pass filters as well as 45HZ bass EQ from 0-9dB.

# 35<sup>TH</sup> ANNIVERSARY

EDITION



Tiffany Style RCA Inputs for audiophile signal quality and maximum signal throughout



Mega powerful transformers, audiophile grade components, military grade circuit boards



Twin turbo power supply torroids in a PWM MOSFET power supply design



Rock solid Ultra-Fi™ MOSFET outputs





### Five Channels of Brutus Elite

The Brutus Elite line offers a versatile 5 channel amp that features both Super A/B and Super D-Class in one amplifier. With it's versatile crossover and equalization circuitry, this five channel Brutus is a great single amp system solution.

Available exclusively from Hifonics ELITE Dealers.

### Ultra-Fi™ MOSFET

Produces high power with minimal distortion

### Low Noise Pre Amplifier

Maximum low voltage signal from the source unit comes into the amplifier circuit with minimal distortion

### Nickel-plated Tiffany Style RCA inputs

Nickel-Plated RCA jacks create best connection and resist corrosion

### Full Range & Bridgeable

Flexible installation allows this amplifier to run in two-channel or bridged mono mode

### Variable Electronic

Electronic crossovers allow for complete control of the sound.

### 4-Way System Protection Circuitry

Monitor thermal, overload, DC, and speaker short protection with lighted indicators on the amplifier end panel

### Illumination

The new 35th Anniversary amplifiers feature illuminated molded and angled Power/Ground and Speaker terminals for stress free installation



All Mono amplifiers and the BE35 5000.5 five channel amplifier include a bass remote with built in protection circuitry to put the bass control at arm's length.

BE35 5000.5



The five channel BE35 5000.5 delivers incredible control for system design. Inputs pass through and all crossover controls accessible on one molded and illuminated connector

BE35 5000.5

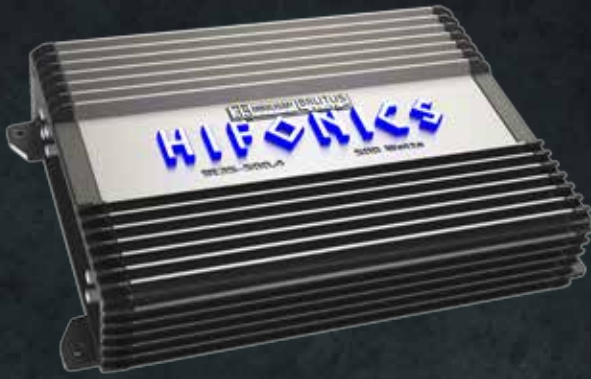


Outputs on BE35 mono amplifiers are designed for 1ga POWER & GROUND cables. All BE35 feature angled and illuminated connectors

BE35 800.4



Outputs on the 4 channel amplifiers feature easy access fusing and angled and illuminated connectors



### BE35 500.4

### Specs

Output Power Watt	
4-Ohms	4 x 65
2-Ohms	4 x 125
1-Ohm	N/A
Mono Bridged @ 2-Ohms	N/A
Stereo Bridged @ 4-Ohms	2 x 250
Variable Hi-Pass	10Hz - 1.5KHz
Variable Low-Pass	30Hz - 150Hz
45Hz Bass EQ	0 - 9dB



### BE35 800.4

### Specs

Output Power Watt	
4-Ohms	4 x 100
2-Ohms	x 200
1-Ohm	/A
Mono Bridged @ 2-Ohms	/A
Stereo Bridged @ 4-Ohms	2 x 400
Variable Hi-Pass	10Hz - 1.5KHz
Variable Low-Pass	30Hz - 150Hz
45Hz Bass EQ	0 - 9dB



### BE35 1200.10

### Specs

Output Power Watt	
4-Ohms	x 450
2-Ohms	1 x 800
1-Ohm	x 1200
Variable Low-Pass	40Hz-300Hz
Variable Subsonic Filter	10Hz-40Hz
45Hz Bass Boost	0 - 9dB
Remote Level Control	Yes





### BE35 1700.1D

### Specs

Output Power Watt	
4-Ohms	1 x 600
2-Ohms	1 x 1000
1-Ohm	1 x 1700
Variable Low-Pass	40Hz-300Hz
Variable Subsonic Filter <sup>1</sup>	0Hz-40Hz
45Hz Bass Boost	0 - 9dB
Remote Level Control	Yes



### BE35 2100.1D

### Specs

Output Power Watt	
4-Ohms	1 x 700
2-Ohms	1 x 1400
1-Ohm	1 x 2100
Variable Low-Pass	40Hz-300Hz
Variable Subsonic Filter <sup>1</sup>	0Hz-40Hz
45Hz Bass Boost <sup>0</sup>	- 9dB
Remote Level Control	Yes



### BE35 2500.1D

### Specs

Output Power Watt	
4-Ohms	1 x 850
2-Ohms	1 x 1700
1-Ohm	1 x 2500
Variable Low-Pass <sup>4</sup>	0Hz-300Hz
Variable Subsonic Filter <sup>1</sup>	0Hz-40Hz
45Hz Bass Boost	0 - 9dB
Remote Level Control	Yes



### BE35 5000.5

### Specs

Output Power Watt	
4-Ohms <sup>4</sup>	x 60 + 1 x 200
2-Ohms	4 x 90 + 1 x 350
1-Ohm	1 x 500 (5ch)
Mono Bridged @ 2-Ohms	N/A
Stereo Bridged @ 4-Ohms	2 x 180
Variable Hi-Pass <sup>1</sup>	0Hz - 1.5KHz (Channel 1 - 4)
Variable Low-Pass	30Hz - 150Hz (Channel 3,4,5)
45Hz Bass EQ	0 - 9dB

# ZEUS ELITE

## AMPLIFIERS



### ZEUS ELITE POWER

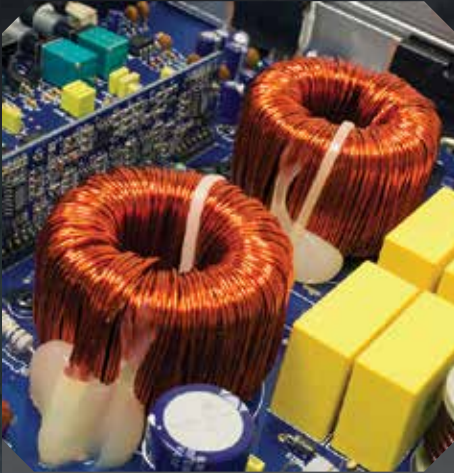
Hifonics Zeus Elite amplifiers have been designed for delivering big power with a great design. The ZEX have options of 2 and 4 channel configurations, with four mono models offering power up to 3300 watts at 1 ohm.

### Elite Status

ZEUS Elite amplifiers feature more power than standard ZEUS ZRX models, making them very exclusive to your system and Hifonics Elite dealers







SPC Simpatico Coil Design Pulse Width Modulated power supply



Ultra-Fi™ MOSFET output devices



Molded and angled ILLUMINATED Terminals for stress free installation access

## Class D

Four big mono amplifiers, utilizing Class D technology to maximize power and efficiency

## Class A/B

Designed to be high sound quality with minimal distortion

## Ultra-Fi™ MOSFET

Produces high power with minimal distortion

## Low Noise Pre Amplifier

Maximum low voltage signal from the source unit comes into the amplifier circuit with minimal distortion

## Nickel-plated RCA inputs

Nickel-Plated RCA jacks create best connection and resist corrosion

## 2 channel and bridged mono operation

Flexible installation allows this amplifier to run in two-channel or bridged mono mode

## Variable Electronic

Electronic crossovers allow for complete control of the sound

## High Grade Aluminum

Heavy duty aluminum alloy heat-sink allows amplifier to quickly dissipate heat while producing maximum power

## 4-Way System Protection Circuitry

Monitor thermal, overload, DC, and speaker short protection with lighted indicators on the amplifier end panel

## Illuminated Logo

The Hifonics logo illuminates when the amplifier is powered, making a #PowerFromTheGods statement in the dark

**All Mono amplifiers include a bass remote to put the bass control at arm's length**



### ZEX650.2

Output Power Watt  
 1-Ohm  
 2-Ohms  
 4-Ohms  
 Mono Bridged @ 2-Ohms  
 Mono Bridged @ 4-Ohms  
 Variable Hi-Pass  
 Variable Low-Pass  
 Variable Subsonic Filter  
 45Hz Bass Boost  
 Dimensions (L x H x W)

### Specs

N/A  
 2x300W  
 2x150W  
 N/A  
 1x600W  
 60Hz-1.2KHz  
 30Hz-250Hz  
 n/a  
 0-12dB  
 11.4" x 2.4" x 10"



### ZEX650.4

Output Power Watt  
 1-Ohm  
 2-Ohms  
 4-Ohms  
 Mono Bridged @ 2-Ohms  
 Mono Bridged @ 4-Ohms  
 Variable Hi-Pass  
 Variable Low-Pass  
 Variable Subsonic Filter  
 45Hz Bass Boost  
 Dimensions (L x H x W)

### Specs

N/A  
 4x150W  
 4x75W  
 N/A  
 2x300W  
 60Hz-1.2KHz  
 30Hz-250Hz  
 N/A  
 0-12dB  
 12.6" x 2.4" x 10"



### ZEX1250.2

Output Power Watt  
 1-Ohm  
 2-Ohms  
 4-Ohms  
 Mono Bridged @ 2-Ohms  
 Mono Bridged @ 4-Ohms  
 Variable Hi-Pass  
 Variable Low-Pass  
 Variable Subsonic Filter  
 45Hz Bass Boost  
 Dimensions (L x H x W)

### Specs

N/A  
 2x600W  
 2x300W  
 N/A  
 1x1200W  
 60Hz-1.2KHz  
 30Hz-250Hz  
 N/A  
 0-12dB  
 19.7" x 2.4" x 10"



### ZEX1250.4

Output Power Watt  
 1-Ohm  
 2-Ohms  
 4-Ohms  
 Mono Bridged @ 2-Ohms  
 Mono Bridged @ 4-Ohms  
 Variable Hi-Pass  
 Variable Low-Pass  
 Variable Subsonic Filter  
 45Hz Bass Boost  
 Dimensions (L x H x W)

### Specs

N/A  
 4x250W  
 4x125W  
 N/A  
 2x500W  
 60Hz-1.2KHz  
 30Hz-250Hz  
 N/A  
 0-12dB  
 15.7" x 2.4" x 10"



### ZEX1350.10

Output Power Watt  
 1-Ohm  
 2-Ohms  
 4-Ohms  
 Frequency Response  
 Variable Low-Pass  
 Variable Subsonic Filter  
 45Hz Bass Boost  
 Remote Level Control  
 Dimensions (L x H x W)

### Specs

1x1300W  
 1x650W  
 1x425W  
 10Hz-300Hz  
 40Hz-300Hz  
 10Hz-40Hz  
 0-9dB  
 Yes  
 12.6" x 2.4" x 10"



### ZEX1950.10

Output Power Watt

1-Ohm

2-Ohms

4-Ohms

Frequency Response

Variable Low-Pass

Variable Subsonic

Filter

45Hz Bass Boost

Remote Level Control

Dimensions (L x H x W)

### Specs

1x1900W

1x950W

1x525W

10Hz-300Hz

40Hz-300Hz

10Hz-40Hz

0-9dB

Yes

15.7" x 2.4" x 10"



### ZEX2050.4

Output Power Watt

1-Ohm

2-Ohms

4-Ohms

Mono Bridged @ 2-Ohms

Mono Bridged @ 4-Ohms

Variable Hi-Pass

Variable Low-Pass

Variable Subsonic Filter

45Hz Bass Boost

Dimensions (L x H x W)

### Specs

N/A

4x500W

4x250W

N/A

2x1000W

60Hz-1.2KHz

30Hz-250Hz

N/A

0-12dB

22.0" x 2.4" x 10"



### ZEX2550.10

Output Power Watt

1-Ohm

2-Ohms

4-Ohms

Frequency Response

Variable Low-Pass

Variable Subsonic Filter

45Hz Bass Boost

Remote Level Control

Dimensions (L x H x W)

### Specs

1x2500W

1x1250W

1x675W

10Hz-300Hz

40Hz-300Hz

10Hz-40Hz

0-9dB

Yes

17.3" x 2.4" x 10"



### ZEX3350.10

Output Power Watt

1-Ohm

2-Ohms

4-Ohms

Frequency Response

Variable Low-Pass

Variable Subsonic Filter

45Hz Bass Boost

Remote Level Control

Dimensions (L x H x W)

### Specs

1x3300W

1x1650W

1x825W

10Hz-300Hz

40Hz-300Hz

10Hz-40Hz

0-9dB

Yes

19.7" x 2.4" x 10"



# ELITE SPEAKERS



BZE65C



BZE69CX



BZE65CX



## VOICE OF THE GODS

The Elite speakers have been designed as a perfect companion to any of the Hifonics Elite subwoofers and amplifiers. Regardless, if you are building an import or an off-road 4x4, the DIN mounting holes make for simple installation in most popular cars and trucks. The components have been tested to deliver high impact music and handle plenty of power.





# Features

## Treated 1" Teteron

Smooth frequency response with a very wide dispersion, making a larger than normal off axis listening area or "sweet spot".

## Polyamide Composite Baskets

Very strong frame means that deep bass tones are tighter and louder without causing flex which adds distortion.

## Oversized Spiders

Using a raised metal spider landing delivers extra excursion on the mid bass drivers allows more movement of air, which creates more volume with the same amount of power when compared to other speakers

## Woven Glass Fiber Cones

Strength in the cone guarantees bass with minimal distortion

## Butyl Surrounds

Butyl rubber surrounds keep the piston motion of the subwoofer linear and smooth

The component crossover features a 12db/octave external crossover network with integrated tweeter protection (COMPONENT)



**Zeus Elite System**

Four channel amplifier:  
Stereo front for Elite components, stereo rear with bridged mono subwoofer

Model	BZE65C	BZE69CX	BZE65CX	
Size	6.5" Component	6x9"	6.5" coaxial	
Power handling	RMS	35	50	35
	MAXX	70	100	70
Impedance	4 Ohm	4 Ohm	4 Ohm	
Cut-Out Ø	5.59"	8.66x5.83"	5.59"	
Chassis depth from flange	2.32"	2.99"	2.32"	

# BRUTUS ELITE SUBWOOFERS



## ELITE BASS POWER

Brand new to the Elite line of products is a very powerful line of subwoofers. Designed to fit any installation, you can choose the 12" dual voice coil designed for a delivering big power in a ported enclosure with 300 watts RMS and 600 peak or the new 10 and 12 inch shallow mount subwoofers that require just enough airspace to mount the subwoofers. Perfect for installation behind the seats of trucks or other vehicles where space is at a premium.



## BZE1204

A big 600 watt 12 in subwoofer Dual 4 ohm voice coil

### Woven Pressed Poly Cone

Heavy Duty woven texture polypropylene cone develops big bass while dramatically reducing cone flex which can rob the system of lowdeep bass.

### Butyl Surround

Satin black linear Butyl rubber surround keeps the piston motion of the subwoofer linear and smooth.

### Voice Coil & Former Assembly

Vented aluminum former holds a large voice coil while allowing the heat to be exchange through the back pole piece and through the dual REZTx spiders.

### H CAP

Injection molded two tone polypropylene dust cap adds strength to the woofer and proudly.



# SHALLOW SUBWOOFERS

## Gloss Poly Cone

Heavy duty cones deliver deep bass with minimal cone flex.

## Butyl Surround

Satin black linear Butyl rubber surround keeps the piston motion of the subwoofer linear and smooth

## Voice Coil & Former Assembly

Vented aluminum former holds a large voice coil while allowing the heat to be exchanged.

## Vented Frame

Additional venting on the rear of the subwoofer helps keep air moving when minimal venting is available within the enclosure



Model	BZE1204	BZE1254S	BRZ1504
Size	12"	12"	15"
Power handling			
RMS	300	150	150
MAXX	600	300	300
Impedance	Dual 4-Ohm	1 x 4 Ohm	1 x 4 Ohm
Cut-Out Ø	11.02"	11.1"	9.09"
Chassis depth from flange	5.79"	3.31"	3.23"

# HIFONICS® POWER SPORTS FROM THE GODS

COMING SPRING 2016

Hifonics is launching Thor, a line of Powersports products aimed at those customers that spend more time outside than on the couch. They want Hifonics power – outdoors!

The Hifonics Thor Powersports line is protected against the elements, components are designed to be easy for installation. The Bluetooth sound bars, TPS10 and TPS6 will launch this spring for customers that demand more.. more attitude and more POWER!



## Large Controls:

- Easy operation with riding gloves
- Power on/off
- Track Forward and Back >> / <<
- Volume up and down + & -
- Map/Reading light
- Bluetooth Jump
- Buttons and LED's are all protected against the elements
- Heavy Impact Grill prevents damage to speakers

# THOR

---

## POWERSPORTS



## Sound Bar Highlights:

- High Efficiency Drivers for bass and midrange
- Titanium Dome Tweeters with Neodymium Magnets
- Solid Extruded Aluminum Structure for secure mounting
- Hifonics Blue Illumination with on/off switch





## Sound Bar Includes:

- Bluetooth Jump allows easy "jump" from one device to another
- Secure Simple Pairing keeps your BT connected and no one else
- IPX6/8 Certified for water, dust and wind.
- Audio In/Out will allow for a hard wired music player plus audio output to drive external amplifiers
- 2 Volts output to drive additional components
- Switchable Illumination The Blue illumination can be switched on and off
- Two different sizes HPS6 or HPS10, integrate perfectly into SXS, ORV machines or custom Sand Cars
- Built-in Map/Reading light
- Autoshut Off



## TPS10 - Ten speaker Powersports Sound Bar

8 High Efficiency Drivers to handle bass and midrange



Two 1" Pure Titanium Dome Tweeters with Neodymium Magnets to handle high frequencies

## TPS6 - Six speaker Powersports Sound Bar

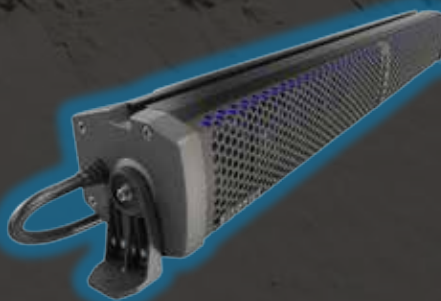
4 High Efficiency Drivers to handle bass and midrange



Two 1" Pure Titanium Dome Tweeters with Neodymium Magnets to handle high frequencies

## Mounting Hardware:

Included are the roll cage mounting hardware for 1.5, 1.75 and 2 inch pipes plus the surface Mounting Brackets when a roll cage is not an option.





# Hercules LTD 35th Anniversary



## LIMITED EDITION

The 35 Year Anniversary celebrations continue with the Hercules LTD edition amplifiers.

The H35 line are available exclusively from our online partners.

### HERCULES Amplifiers Feature:

- Super D-Class™ Mono Blocks
- Super A/B Class™ Four Channel
- Ultra-Fi MOSFET Outputs
- Illumination
- Bass remotes included on mono amps



Mega powerful transformers, audiophile grade components, military grade circuit boards



Twin turbo power supply torroids in a PWM MOSFET power supply design



Rock solid Ultra-Fi™ MOSFET outputs





The Hercules 35th Anniversary line offers Super A/B Class Full range in a four channel amplifier and Super D-Class Technology in three options of mono subwoofer amplifiers. This focused amplifier line makes designing a Hercules system online easy.



All mono amplifiers include a bass remote to put the bass control at arm's length.

## Ultra-Fi™ MOSFET

Produces high power with minimal distortion

## Low Noise Pre Amplifier

Maximum low voltage signal from the source unit comes into the amplifier circuit with minimal distortion

## Nickel-plated RCA inputs

Nickel-Plated RCA jacks create the best connection and resist corrosion

## 2 channel & bridged mono operation

Flexible installation allows this amplifier to run in two-channel or bridged mono mode.

## Variable Electronic

Electronic crossovers allow for complete control of the sound.

## 4-Way System Protection Circuitry

Monitor thermal, overload, DC, and speaker short protection with lighted indicators on the amplifier end panel

## Illumination

The new 35th Anniversary amplifiers feature illuminated molded and angled Power/Ground and Speaker terminals for stress free installation

### H35 1200.4

### Specs

Output Power Watt	
4-Ohms	4 x 75
2-Ohms	4 x 150
1-Ohm	N/A
Mono Bridged @ 2-Ohms	N/A
Stereo Bridged @ 4-Ohms	2 x 600
Variable Hi-Pass	60Hz - 1.2KHz
Variable Low-Pass	30Hz - 150Hz
45Hz Bass EQ	0-9dB

### H35 1700.10

### Specs

Output Power Watt	
4-Ohms	1 x 425
2-Ohms	1 x 850
1-Ohm	1 x 1700
Variable Low-Pass	35Hz-250Hz
Variable Subsonic Filter	15Hz-35Hz
45Hz Bass Boost	0-9dB
Remote Level Control	Yes

### H35 2400.10

### Specs

Output Power Watt	
4-Ohms	1 x 800
2-Ohms	1 x 1400
1-Ohm	1 x 2400
Variable Low-Pass	35Hz-250Hz
Variable Subsonic Filter	15Hz-35Hz
45Hz Bass Boost	0-9dB
Remote Level Control	Yes

### H35 3000.10

### Specs

Output Power Watt	
4-Ohms	1 x 750
2-Ohms	1 x 1500
1-Ohm	1 x 3000
Variable Low-Pass	35Hz-250Hz
Variable Subsonic Filter	15Hz-35Hz
45Hz Bass Boost	0-9dB
Remote Level Control	Yes

# BRUTUS AMPLIFIERS



## BRUTUS POWER

Brutus, or BRX as those close to the gods call it, is all Go & Show. If your system is going to be shown at car shows and other competitions, take a very close look at the Brutus BRX. Brutus BRX is packed with features to enhance sound quality and power. There are 5 models of pure mono power featuring Super D Class™ and a new 5 channel. That is 9 amplifiers that can help you design a perfect system around Brutus power.



### Super A/B Class™

Top quality 1% tolerance grade components. Super A/B Class™ insures the Hifonics full range amplifiers fill your needs for high-power and ultra-high end sound.

### Super D Class™

Utilizing 1% tolerance digital chip technology to provide an extremely efficient, low temperature, high amplification system

### Ultra-Fi™ MOSFET

Produces high power with minimal distortion

### Variable Electronic

Electronic crossovers allow for complete control of the sound

### High Grade Aluminum

Heavy duty aluminum alloy heat-sink allows amplifier to quickly dissipate heat while producing maximum power

### 4-Way System Protection Circuitry

Monitor thermal, overload, DC, and speaker short protection with lighted indicators on the amplifier end panel

### Illuminated Logo

The Hifonics logo illuminates when the amplifier is powered, making a #PowerFromTheGods statement in the dark



Accu-Cross™ crossovers and adjustments for sound shaping



Ultra-Fi™ MOSFETS



All Mono and five channel amplifiers include a bass remote to put the bass control at arm's length.



### BRX316.4

Output Power Watt  
 1-Ohm  
 2-Ohms  
 4-Ohms  
 Mono Bridged @ 2-Ohms  
 Mono Bridged @ 4-Ohms  
 Variable Hi-Pass  
 Variable Low-Pass  
 Variable Subsonic Filter  
 45Hz Bass Boost  
 Remote Level Control  
 Dimensions (L x H x W)

### Specs

N/A  
 4x80W  
 4x40W  
 N/A  
 2x160W  
 60Hz-1.3KHz  
 30Hz-250Hz  
 N/A  
 0-10dB  
 N/A  
 11 x 2.4 x 9.8"



### BRX616.4

Output Power Watt  
 1-Ohm  
 2-Ohms  
 4-Ohms  
 Mono Bridged @ 2-Ohms  
 Mono Bridged @ 4-Ohms  
 Variable Hi-Pass  
 Variable Low-Pass  
 Variable Subsonic Filter  
 45Hz Bass Boost  
 Remote Level Control  
 Dimensions (L x H x W)

### Specs

N/A  
 4x160W  
 4x80W  
 N/A  
 2x320W  
 60Hz-1.3KHz  
 30Hz-250Hz  
 N/A  
 0-10dB  
 N/A  
 14.7 x 2.4 x 9.8"



### BRX1116.1D

Output Power Watt  
 1-Ohm  
 2-Ohms  
 4-Ohms  
 Frequency Response  
 Variable Low-Pass  
 Variable Subsonic Filter  
 45Hz Bass Boost  
 Remote Level Control  
 Dimensions (L x H x W)

### Specs

1x1100W  
 1x700W  
 1x400W  
 10Hz-50KHz  
 35Hz-250Hz  
 15Hz-35Hz  
 0-10dB  
 Yes  
 10.2 x 2.4 x 9.8"



### BRX1515.1

Output Power Watt  
 1-Ohm  
 2-Ohms  
 4-Ohms  
 Frequency Response  
 Variable Low-Pass  
 Variable Subsonic Filter  
 45Hz Bass Boost  
 Remote Level Control  
 Dimensions (L x H x W)

### Specs

1x1500W  
 1x900W  
 1x550W  
 10Hz-50KHz  
 35Hz-250Hz  
 15Hz-35Hz  
 0-10dB  
 Yes  
 "12.5 x 2.4 x 9.8"



### BRX1616.4

Output Power Watt  
 1-Ohm  
 2-Ohms  
 4-Ohms  
 Mono Bridged @ 2-Ohms  
 Mono Bridged @ 4-Ohms  
 Variable Hi-Pass  
 Variable Low-Pass  
 Variable Subsonic Filter  
 45Hz Bass Boost  
 Dimensions (L x H x W)

### Specs

N/A  
 4x400W  
 4x200W  
 N/A  
 2x800W  
 60Hz-1.3KHz  
 30Hz-250Hz  
 N/A  
 0-10dB  
 "17.7 x 2.4 x 9.8"



### BRX2016.1D

Output Power Watt  
 1-Ohm  
 2-Ohms  
 4-Ohms  
 Frequency Response  
 Signal to Noise Ratio  
 Variable Low-Pass  
 Variable Subsonic Filter  
 45Hz Bass Boost  
 Remote Level Control  
 Dimensions (L x H x W)

### Specs

1x2000W  
 1x1400W  
 1x700W  
 10Hz-50KHz  
 >95dB  
 35Hz-250Hz  
 15Hz-35Hz  
 0-10dB  
 Yes  
 "14.7 x 2.4 x 9.8"



### BRX2416.1D

Output Power Watt  
 1-Ohm  
 2-Ohms  
 4-Ohms  
 Frequency Response  
 Variable Low-Pass  
 Variable Subsonic Filter  
 45Hz Bass Boost  
 Remote Level Control  
 Dimensions (L x H x W)

### Specs

1x2400W  
 1x1600W  
 1x850W  
 10Hz-50KHz  
 35Hz-250Hz  
 15Hz-35Hz  
 0-10dB  
 Yes  
 "14.9 x 2.4 x 9.8"



### BRX3016.1D

Output Power Watt  
 1-Ohm  
 2-Ohms  
 4-Ohms  
 Frequency Response  
 Variable Low-Pass  
 Variable Subsonic Filter  
 45Hz Bass Boost  
 Remote Level Control  
 Dimensions (L x H x W)

### Specs

1x3000W  
 1x2000W  
 1x1000W  
 10Hz-50KHz  
 35Hz-250Hz  
 15Hz-35Hz  
 0-10dB  
 Yes  
 "17.7 x 2.4 x 9.8"



### BRX5016.5

Output Power Watt  
 1-Ohm  
 2-Ohms  
 4-Ohms  
 Mono Bridged @ 2-Ohms  
 Mono Bridged @ 4-Ohms  
 Frequency Response  
 Signal to Noise Ratio  
 THD %  
 Variable Hi-Pass  
 Variable Low-Pass  
 Variable Subsonic Filter  
 45Hz Bass Boost  
 Remote Level Control  
 Dimensions (L x H x W)

### Specs

N/A  
 4x100W + 1x750W  
 4x60W + 1x475W  
 N/A  
 N/A  
 10Hz-50KHz  
 ≥90dB  
 <0.05%  
 "CH1/2: 50Hz-4KHz  
 CH3/4: 50Hz-250Hz"  
 "CH3/4: 150Hz-4KHz  
 CH5: 35Hz-150Hz"  
 15Hz-55Hz  
 0-18dB  
 YES  
 "19.6 x 2.4 x 9.8"



# ZEUS AMPLIFIERS



## ZEUS POWER

Hifonics Zeus amplifiers prove that #PowerFromTheGods is possible in any system. New amplifiers with 2 and 4 channel configurations make it easy to power your highs. But, with four new models of mono subwoofer amplifiers featuring Class D power, your system will shake the foundation of Mt. Olympus. Mortals can have a car audio system with 3200 watts at 1 ohm – Zeus ZRX is the answer.



Ultra-Fi™ MOSFETS



Accu-Cross™ crossovers and adjustments for sound shaping



## Class D

Four big mono amplifiers, utilizing Class D technology to maximize power and efficiency

## Class A/B

Designed to be high sound quality with minimal distortion

## Ultra-Fi™ MOSFET

Produces high power with minimal distortion

## Low Noise Pre Amplifier

Maximum low voltage signal from the source unit comes into the amplifier circuit with minimal distortion

## Nickel-plated RCA inputs

Nickel-Plated RCA jacks create best connection and resist corrosion

## 2 channel and bridged mono operation

Flexible installation allows this amplifier to run in two-channel or bridged mono mode.

## Variable Electronic

Electronic crossovers allow for complete control of the sound

## High Grade Aluminum

Heavy duty aluminum alloy heat-sink allows amplifier to quickly dissipate heat while producing maximum power

## 4-Way System Protection Circuitry

Monitor thermal, overload, DC, and speaker short protection with lighted indicators on the amplifier end panel

## Illuminated Logo

The Hifonics logo illuminates when the amplifier is powered, making a #PowerFromTheGods statement in the dark



All Mono amplifiers include a bass remote to put the bass control at arm's length.



### ZRX515.2

Output Power Watt  
 1-Ohm  
 2-Ohms  
 4-Ohms  
 Mono Bridged @ 2-Ohms  
 Mono Bridged @ 4-Ohms  
 Variable Hi-Pass  
 Variable Low-Pass  
 Variable Subsonic Filter  
 45Hz Bass Boost  
 Dimensions (L x H x W)

### Specs

N/A  
 2x250W  
 2x125W  
 N/A  
 1x500W  
 60Hz-1.2KHz  
 30Hz-250Hz  
 N/A  
 0-12dB  
 11.4" x 2.4" x 10"



### ZRX615.4

Output Power Watt  
 1-Ohm  
 2-Ohms  
 4-Ohms  
 Mono Bridged @ 2-Ohms  
 Mono Bridged @ 4-Ohms  
 Variable Hi-Pass  
 Variable Low-Pass  
 Variable Subsonic Filter  
 45Hz Bass Boost  
 Dimensions (L x H x W)

### Specs

N/A  
 4x150W  
 4x75W  
 N/A  
 2x300W  
 60Hz-1.2KHz  
 30Hz-250Hz  
 N/A  
 0-12dB  
 12.6" x 2.4" x 10"



### ZRX1015.4

Output Power Watt  
 1-Ohm  
 2-Ohms  
 4-Ohms  
 Mono Bridged @ 2-Ohms  
 Mono Bridged @ 4-Ohms  
 Variable Hi-Pass  
 Variable Low-Pass  
 Variable Subsonic Filter  
 45Hz Bass Boost  
 Dimensions (L x H x W)

### Specs

N/A  
 4x250W  
 4x125W  
 2x500W  
 60Hz-1.2KHz  
 30Hz-250Hz  
 N/A  
 0-12dB  
 15.7" x 2.4" x 10"



### ZRX1215.10

Output Power Watt  
 1-Ohm  
 2-Ohms  
 4-Ohms  
 Frequency Response  
 Variable Low-Pass  
 Variable Subsonic Filter  
 45Hz Bass Boost  
 Remote Level Control  
 Dimensions (L x H x W)

### Specs

1x1200W  
 1x600W  
 1x400W  
 10Hz-300Hz  
 40Hz-300Hz  
 10Hz-40Hz  
 0-12dB  
 Yes  
 12.6" x 2.4" x 10"



### ZRX1215.2

Output Power Watt  
 1-Ohm  
 2-Ohms  
 4-Ohms  
 Mono Bridged @ 2-Ohms  
 Mono Bridged @ 4-Ohms  
 Variable Hi-Pass  
 Variable Low-Pass  
 Variable Subsonic Filter  
 45Hz Bass Boost  
 Dimensions (L x H x W)

### Specs

N/A  
 2x600W  
 2x300W  
 N/A  
 1x1200W  
 60Hz-1.2KHz  
 30Hz-250Hz  
 N/A  
 0-12dB  
 19.7" x 2.4" x 10"



### ZRX1816.10

Output Power Watt	
1-Ohm	1x1800W
2-Ohms	1x900W
4-Ohms	1x500W
Frequency Response	10Hz-300Hz
Variable Low-Pass	40Hz-300Hz
Variable Subsonic Filter	10Hz-40Hz
45Hz Bass Boost	0-12dB
Remote Level Control	Yes
Dimensions (L x H x W)	15.7" x 2.4" x 10"

### Specs



### ZRX2016.4

Output Power Watt	
1-Ohm	N/A
2-Ohms	4x500W
4-Ohms	4x250W
Mono Bridged @ 2-Ohms	N/A
Mono Bridged @ 4-Ohms	2x1000W
Variable Hi-Pass	60Hz-1.2KHz
Variable Low-Pass	30Hz-250Hz
Variable Subsonic Filter	N/A
45Hz Bass Boost	0-12dB
Dimensions (L x H x W)	22.0" x 2.4" x 10"

### Specs



### ZRX2416.10

Output Power Watt	
1-Ohm	1x2400W
2-Ohms	1x1200W
4-Ohms	1x650W
Frequency Response	10Hz-300Hz
Variable Low-Pass	40Hz-300Hz
Variable Subsonic Filter	10Hz-40Hz
45Hz Bass Boost	0-12dB
Remote Level Control	Yes
Dimensions (L x H x W)	17.3" x 2.4" x 10"

### Specs



### ZRX3216.10

Output Power Watt	
1-Ohm	1x3200W
2-Ohms	1x1600W
4-Ohms	1x800W
Frequency Response	10Hz-300Hz
Variable Low-Pass	40Hz-300Hz
Variable Subsonic Filter	10Hz-40Hz
45Hz Bass Boost	0-12dB
Remote Level Control	Yes
Dimensions (L x H x W)	19.7" x 2.4" x 10"

### Specs



# Brutus Subwoofers



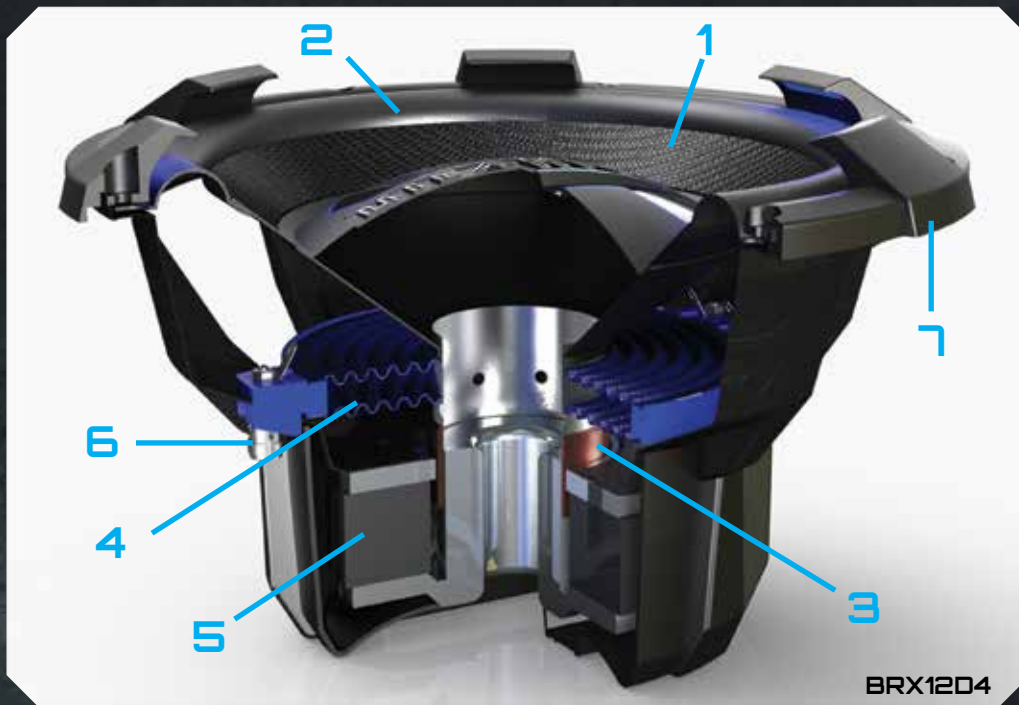
## BRUTUS FORCE

Hifonics Brutus subwoofers are built for one purpose; Brute force power. These subwoofers feature designs like a multi-layer voice coils and vented aluminum formers for MAXX power handling.

Brutus subs are the definition of #PowerFromTheGods. Take a look inside the Brutus BRX12D4 subwoofer on the next page and see why the Brutus and other Hifonics subwoofers deliver huge bass, especially when matched with a Hifonics amplifier.

Model	BRX12D4	BRZ1250D4	BRZ15D4
Size	12"	12"	15"
Power RMS/MAXX	450/900	600/1200	600/1200
Impedance	Dual 4-Ohm	Dual 4-Ohm	Dual 4-Ohm
Cut-Out Ø	10.94"	11.18"	13.86"
Chassis depth from flange	5.69"	6.4"	7.13"





**1 Woven Pressed Polypropylene Cone**

Heavy Duty woven texture polypropylene cone develops big bass while dramatically reducing cone flex which can rob the system of low deep bass

**2 Butyl Surround**

Satin black linear Butyl rubber surround along with the REZTx spiders help keep the piston motion linear and smooth

**3 Voice Coil & Former Assembly**

Vented aluminum former holds a 2.5" voice coil while allowing the heat to be exchange through the equal pressure venting system

**4 Dual REZTx Spiders**

Dual REZTx (Resin infused textile) spiders along with the REZTx alignment collar, allow the Brutus woofer to handle more power

**5 56oz Motor**

Double stacked high energy motor assembly with 56oz magnets increases power handling which increases SPL – sound pressure level

**6 P & I Terminals**

Nickel-plated 8 gauge speaker terminals to secure speaker wire connections easily

**7 2XIL Ring**

The 2XIL Ring is a heavy duty ABS trim ring with dual illumination.

# HERCULES SUBWOOFERS



## Satin Black Polypropylene Cone

Heavy Duty injection molded polypropylene cone adds strength

## High SPL Rubber Surround

Satin black linear Butyl rubber surround along with the Hercules spider helps keep the piston motion linear and smooth

## Voice Coil & Former Assembly

Vented aluminum former holds the voice coil while allowing the heat to be exchange through the back pole piece and the Hercules balanced venting system. Less heat means less distortion and improved reliability

## Cotton Spider

Specialized Hifonics cotton spider, along with the Butyl surround, allows the Hercules keep the piston motion of the subwoofer linear and smooth

## Chromed & Booted

The HFX12D4 subwoofer is finished in Chrome with a tight fitting magnet boot to create a great look in any install.

## HERCULES POWER

The HFX12D4 is a Dual 4 ohm subwoofer which makes it very flexible for system design and is ideal for a small vented or sealed enclosure.

The HFX subwoofer will deliver powerful bass. The subwoofer features an injection polypropylene cone and a heavy duty High SPL rubber surround to improved power handling.

The cone and surround assembly offers increased piston movement for added performance, rigidity, and strong bass capabilities. The subwoofer also features an integrated one-piece poly cotton spider for controlling the liner (piston) movement, and high-temperature voice coil and former for heat dissipation.

Model	HFX12D4
Size	12"
Power handling RMS	400
MAXX	800
Impedance	Dual 4-Ohm
Cut-Out Ø	10.94"
Chassis depth from flange	5.61"



# Hercules Speakers



The Hercules full range speakers all feature

## Silk & Mylar Domed Tweeters

Heavy Duty injection molded polypropylene cone adds strength

## Phase Lens

The H-Stamp in silver holds a phase lens over the tweeter which aides in creating a wider off-axis sweet spot

## Surround

Butyl Rubber for improved sound quality and consistent performance in temperature swings, especially colder climates

## Cone

A Curvilinear woven glass cone is used which creates a lightweight and rigid component, improving SPL with a wider off-axis sweet spot

## Voice Coil

Two layer copper windings for added heat dissipation and reduced distortion. A lightweight Kapton former which helps the voice coil move quickly and dissipate heat

## Spider

Resin impregnated cotton spider with bumped design which allows for more clearance and longer excursion

The HS6.2C component system also features

## 12dB Passive Crossover

Improved separation between tweeter and mid/woofer with 12dB per octave crossover network

## Tweeter Mounting Hardware Included

Flush, Surface and Angle Mount Tweeter Cups are included to make any installation application easy

Grills are included on the components, the 6.5 coax and 6x9" models

Model	HS6.2C	HS693	HS66CX	HS576BCX	HS46CX	HS35CX
Size / Type	6.5" component	6x9"	6.5" 2-way coax	5x7" 2-way coax	4x6" 2-way coax	3.5" 2-way coax
Power handling RMS	35	45	30	30	15	10
MAXX	70	90	60	60	30	20
Impedance	4 ohms	4 ohms	4 ohms	4 ohms	4 ohms	4 ohms
Sensitivity	85dB	90dB	86dB	88dB	85dB	82dB
Top Mount Depth	2.5"	3.4"	2.5"	2.5"	2"	1.7"

# Signal Processors



## Hifonics Digital Bass Restoration

The HDBR processor contains a Bass Driver circuit that accurately recreates and injects Low Frequency information back into the signal path. What that means in everyday terms is that this Signal Processor will give more bass impact to your best compact discs and even your lowest quality recordings.

## Dash Mount Remote Control

Our unit comes with a Dash Mountable Remote Control that allows you to enjoy the effects of the processed signal without having to leave the driver's seat.

## Bass Output Control

The HDBR has the ability to produce large amounts of deep, ground shaking bass without damaging your speakers. The Bass Output Control circuit allows the Hifonics Digital Bass Restoration processor to maximize the bass output of any auto sound audiosystem while restraining destructive bursts.



## HIFONICS CROSSOVER WITH REMOTE

The HFXR is designed for complete control of crossover and amplifier signal. If you are in the top tier of system design the HFXR is a must. With an 8.5volt line driver, a quasi-parametric EQ, 180 degree phase shift and discreet level controls for front, rear and sub channels, this will be one of the last components for your perfect system.

## HIFONICS EQ - HFEO

Quickly enhance any Hifonics installation with the addition of the Hifonics <sup>TM</sup>IN Equalizer. Key features for installation applications include four bands of EQ with +18dB gain and a 9 volt line driver.

BXiPro 1.0 & BXiPro 2.0  
Digital Bass Enhancement Processors



The BXiPRO processors contain a Bass Driver circuit that accurately recreates and injects Low frequency information back into the signal path. The BXiPro2.0 is a step up from the BXiPro1.0 adding the features of a noise reduction circuit, a master volume plus the illuminated controls.



# HIFONICS® POWER FROM THE GODS SINCE 1981

## THEN

Hifonics was there at the beginning of car audio, developing technology, engineering some of the loudest cars on Earth.

**35<sup>TH</sup> ANNIVERSARY**  
EDITION



## NOW

Our 35 years of experience leading the car audio industry delivers the all-new Super Amps, three incredible amplifiers that are CTA Certified RMS amplifiers including the Colossus 35th Anniversary Dual Mono Ultra D-Class delivering 3400 watts of **#PowerFromTheGods**

## Future

Spring 2016  
THOR Powersports



If you're looking for quality car amplifiers, visit our website.