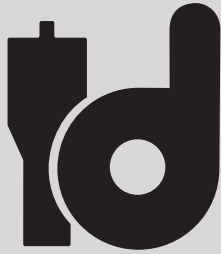


Volume 27



IDIDIT

Steering Columns and Accessories



1967 CORVETTE TILT STEERING COLUMN



- This column is designed specifically to fit your 1967 Corvette and does NOT require modification for install
- Has a fabricated dash bezel and wire cover for a clean and stylish fit and finish
- Comes with 8-position tilt, self-canceling turn signals, 4-way flashers, knobs & levers, and wiring connectors
- For additional safety, this column also is fully collapsible, in case of an impact or accident

FORD TRUCK COLUMN SHIFT STEERING COLUMN 1965-1979 FORD 1/2 TON TRUCK



- Designed specifically for 1965-1979 1/2 Ton Ford Truck owners that want to use stock wiring and original steering wheel
- Comes with Ford style knobs & levers, Ford turn signal switch, and Ford wiring connectors
- Available in paintable steel, chrome, and black powder coat finishes
- Installation kits required for complete installation

PRO-FAB LIGHT-WEIGHT DIGITAL DASH MOUNT



- This lightweight dash mounts allows racers to use their favorite digital dash with the IDIDIT Pro-Fab line of competition steering columns.
- Designed to slide and clamp onto IDIDIT Performance Pro-Fab steering columns
- Can also be mounted to 1 3/4" or 2" tubing allowing for mounting directly onto roll cage or existing steering column
- Manufactured out of light-weight aluminum, precision laser cut, and CNC machined for superior fit and finish
- Brushed aluminum finish

PRO-LITE BUILDER COLUMN & BILLET COLUMN DROPS



PRO-LITE BUILDER COLUMN

- Lightweight column, weighing only 6.1lbs; up to 20lbs weight savings
- Two-Piece collapsible shaft with 5" of collapsibility
- Standard Six-Bolt IDIDIT Performance quick-release steering hub
- Equipped with self-canceling electronic turn signals switch and four-way hazards

BILLET COLUMN DROPS

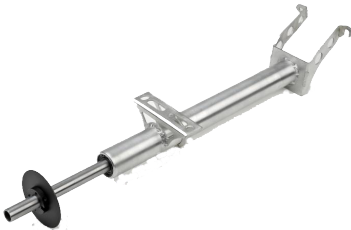
- Available in 3, 5.5, and 8 inch lengths
- Standard black anodized finish
- Equipped with stainless steel hardware and a machined Delrin spacer to work with 1-3/4- or 1-5/8-inch under-dash mounts

PRO-FAB LIGHT-WEIGHT STEERING COLUMN 1989-1991 HONDA CRX & EF



- Ultra-light weight column weighing only 3 pounds, up to 20lbs weight savings
- Slides directly in place of factory column and bolts into factory mounting points
- Comes with an extended shaft that can be trimmed to length
- Precision laser cut tubing and brackets means superior fit and finish
- Sealed upper ball bearing and Delrin lower bushing means the column will operate smoothly after many years of abuse
- Brushed aluminum finish

PRO-FAB LIGHT-WEIGHT STEERING COLUMN 1990-2005 MAZDA MIATA



- Ultra-light weight column weighing as little as 2.65lbs up to 17.5lbs weight savings
- Slides directly in place of factory column and bolts into factory mounting points
- Comes with an extended shaft that can be trimmed to length
- Precision laser cut tubing and brackets means superior fit and finish
- Sealed upper ball bearing and Delrin lower bushing means the column will operate smoothly after many years of abuse
- Brushed aluminum finish

PRO-FAB LIGHT-WEIGHT STEERING COLUMN 2015-CURRENT FORD MUSTANG S550



- Ultra-light weight column weighing as little as 5.75lbs, up to 16lbs weight savings
- Slides directly in place of factory column and bolts into factory mounting points
- Comes with an extended shaft that can be trimmed to length
- Precision laser cut tubing and brackets means superior fit and finish
- Sealed upper ball bearing and Delrin lower bushing means the column will operate smoothly after many years of abuse
- Brushed aluminum finish

PRO-FAB LIGHT-WEIGHT STEERING COLUMN 2005-2014 FORD MUSTANG S197



- Ultra-light weight column weighing as little as 3.85lbs, up to 18lbs weight savings
- Slides directly in place of factory column and bolts into factory mounting points
- Comes with an extended shaft that can be trimmed to length
- Precision laser cut tubing and brackets means superior fit and finish
- Sealed upper ball bearing and Delrin lower bushing means the column will operate smoothly after many years of abuse
- Brushed aluminum finish

SMOOTH STEERING COLUMN DROPS



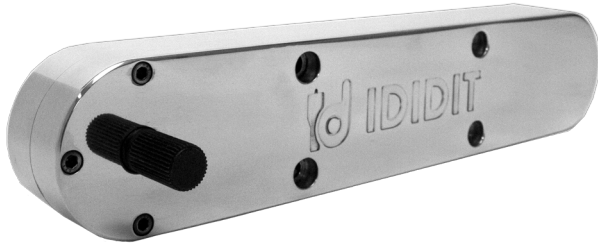
- Side edges are rounded for a classy, more finished look
- Each drop has two clamp bolts located on either side and when removed will separate the drop halves allowing you to slide your column through
- Designed for a variety of applications
- Includes mounting nuts & bolts

QUICK RELEASE HUB WITH HORN



- Designed for perfect center alignment with removable steering wheels
- Comes in 5 bolt, and 6 bolt applications and fits steering columns with a GM style top-shaft
- Steering hubs include a centering pin as part of the hub to ensure quick, trouble-free alignment with the spline
- Includes adapter for horn wiring

SIDE STEP OFFSET STEERING BOX



- Relocate the shaft position under the hood for more room for horsepower or in the cab for more legroom
- Available in 8", 10", 12", or 16" offsets
- Available in machined or polished finishes

CENTER STEERING BOX



- Designed with mini/midget sprint cars, period correct vintage racing, drag boats, and rat-rods in mind
- 8:1 or 6:1 gear ratio available
- Each steering box is assembled to customer's specifications and is available in various offsets and configurations
- Keeps the vintage look in your race or custom vehicle

VINTAGE WIRES



- Ignition wires available for 4-6-8 cylinder engines
- Customizable for your application
- Available in 11 Colors
- Manufactured with a spiral wound suppression core and 7.8mm EPDM silicone insulation
- Boots, terminals, dielectric grease and installation instructions included

Learn more about performance steering parts we have.