

# INTRO-TECH

A U T O M O T I V E





**INTRO-TECH**  
**AUTOMOTIVE**





A photograph of a modern, light-colored industrial building with a large roll-up door. In the foreground, the rear of a silver car is visible, showing the trunk and taillights. The scene is set outdoors with some greenery and a clear blue sky.

## INTRO-TECH AUTOMOTIVE

Dear Customer and Future Customers

It is with great enthusiasm that I introduce our new and improved Intro-Tech Automotive catalog. Since 1991, Intro-Tech Automotive has specialized and led the industry in improving driving enjoyment by manufacturing premium quality custom automotive accessories. Our comprehensive General Motors licensed product line is testament of our commitment to the seamless integration of accessories into the industry.

Our account base has grown into the thousands and our strength lies in our ability to provide limitless customer support and consistent service. Our highly efficient shipping and delivery schedule will amaze your customers.

All our custom made products are proudly manufactured in our state of the art Southern California facilities, totalling 43,000 square feet. Our manufacturing excellence is achieved through the use of the latest cad computer cutting technology. By using only the finest raw materials, we are proud to offer you our unsurpassed lifetime warranty on all our products.

We are "driving forward" at high speed with innovative product features and new product lines, supported by our worldwide patented marketing concepts. The entire Intro-Tech Automotive team invites you to come along for the "ride".

Henri Lerterman  
President

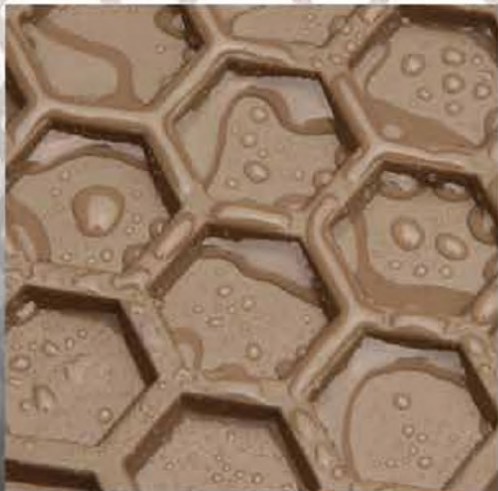




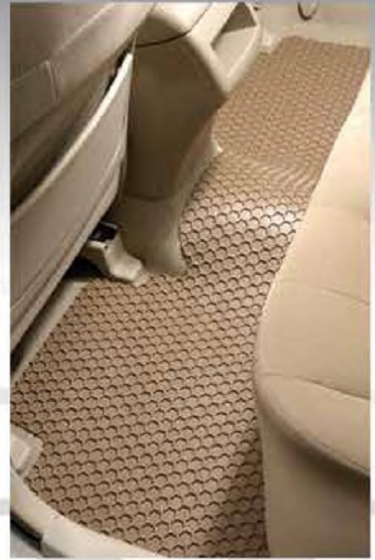
- All season custom auto mat.
- Non-fading and non cracking.
- Tremendous liquid holding capacity.
- Will keep debris like: sand, mud and rocks in place within the hexo shaped pockets.
- Unique hexo - shaped border to border design.
- Exclusively developed compound gives the HEXOMAT™ a rubber feel and look.
- Non skid nib backing provides optimum traction.
- Manufactured in the USA.
- All season custom auto mats meet all the standards and requirements for FMVSS - 302.
- Over 11,000 custom fit patterns including: full front overalls, rear overalls, cargo/trunk mats for all sport utility vehicle's, mini vans, pick-up-trucks, and sedans.
- All patterns are computer precision cut to guarantee the highest consistency in design and fit.
- Available in Black, Clear, Tan, Gray, and Ivory.
- Lifetime warranty.

• Positive Locking Device

ALL SEASON  
**HEXOMAT**  
 CUSTOM AUTO MAT™







• Full Color Counter Display



• Full Color Retail Boxes





## Diamond Plate AutoMat™

- Super brilliant, simulated polished aluminum diamond plate appearance.
- The first and only diamond plate custom fit floor mat.
- Integrates with custom foot pedals, gauges/dash/door panels, graphite or aluminum trim.
- Engineered to with-stand daily use.
- Finished with an eye catching checkered race flag binding.
- Premium quality rubber nib backing.
- Available in over 11,000 custom fit patterns.
- Manufactured in the USA.
- Lifetime warranty.





**NEW!**

Available Now!

## **Carbon Fiber AutoMat™**

- Heavy-duty simulated carbon fiber diamond plate appearance.
- The first and only carbon fiber diamond plate custom fit floor mat.
- Integrates with custom foot pedals, gauges/dash/door panels, graphite or aluminum and carbon fiber trim.
- Engineered to with-stand daily use.
- Finished with an eye catching black binding.
- Premium quality rubber nib backing.
- Available in over 11,000 custom fit patterns.
- Manufactured in the USA.
- Lifetime warranty.







- Protects the original floor mats from harsh elements in all weather conditions.
- Protect-A-Mat™ will not crack, curl or harden in hot or cold temperatures.
- Ultra premium vinyl construction, with five 1/4 inch high nibs per square inch to prevent sliding.
- Easy to clean.
- Over 11,000 custom fit patterns including: full front overalls, rear overalls, cargo/trunk mats for all sport utility vehicle's, mini vans, pick-up-trucks, and sedans.
- Lifetime warranty.
- Optional – corporate dealership name and logo with beautiful 3-D dome logo appliques

# Protect-A-Mat™



- Clip-A-Mat™ for EXTRA SECURITY, to keep your Protect-A-Mat™ from sliding forward.
- Attach these clips to the edge of your mats.



- Floor display rack.





**RAIN-BUSTER™**

## ***Carbon-Fiber Finish Golf Umbrella***



- Rain-Buster™ Carbon-Fiber finish wind proof golf umbrella.
- 58 inch (111.8 cm) Golf Umbrella.
- Pre-coated water repellent canopy.
- Double canopy air vent design.
- Strong and durable carbon-fiber finish shaft.
- Memory foam handle with metal D-ring for hanging.
- Auto-Open at the push of a button.
- Storage sleeve included.
- Available in: Black Stallion, Midnight Blue, Fireball Red.

- Floor display with lockable wheels, with price sign. Floor display holds 28 pieces.



- Black Stallion UM-01



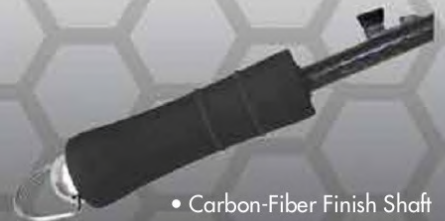
- Midnight Blue UM-33



- Fireball Red UM-15



- Custom silkscreen corporate dealership name and logo



- Carbon-Fiber Finish Shaft
- Memory Foam Handle
- Metal D-Ring for Hanging

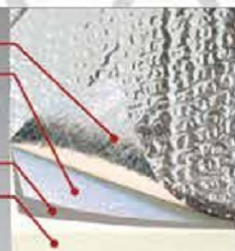




## Ultimate **REFLECTOR** CUSTOM FOLDING AUTO SHADE™

- Available in over 2,800 custom patterns, from cars, pickup trucks, sport-utility vehicles, minivans and vans.
- The multi-layered construction reduces the inside temperature by as much as 40 degrees Fahrenheit.
- Designed to fit the inside of your specific vehicle's windshield.
- Prevents ugly, costly dashboard cracks and fading.
- Unfolds and installs in seconds... stores in it's own storage bag.
- Finished with a non-abrasive velour binding.
- Lifetime warranty.

- Reflective mylar film
- Unique unpenetrable air cushion heat barrier
- Fiber layer for stability and strength
- 1/4" Thermal foam-board
- Fiber layer for stability and strength
- Graphite protective felt



- Storage bag included



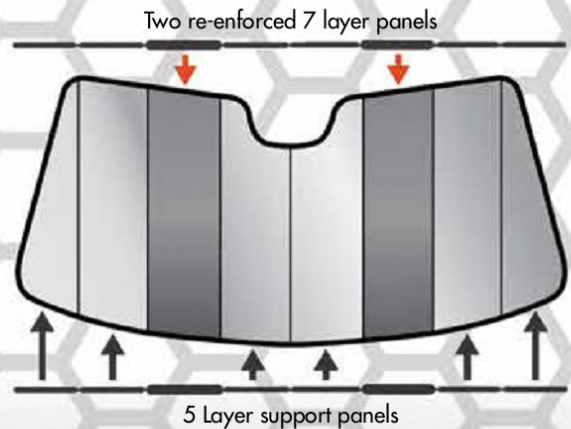




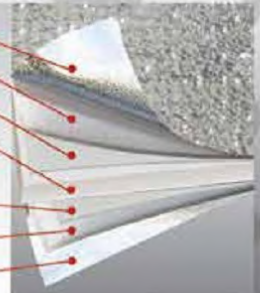
## Custom Premium Folding Auto Shade™

- Custom Premium Folding Auto Shade's™ unique features are the two 7-layer re-enforced panels to keep the sun shade up-right at any time.
- The multi-layered construction reduces the inside temperature by as much as 40 degrees Fahrenheit.
- Protects interior from heat and UV damage, keeps steering wheel and shift knob comfortable to the touch.
- Available in over 2,800 custom patterns, from cars, pickup trucks, sport-utility vehicles, minivans and vans.
- This Custom Premium Folding Auto Shade™ installs in seconds and comes with its own drawstring storage bag.
- Finished with a non-abrasive velour binding.
- Lifetime warranty.

- Drawstring storage bag included



- 1 Reflective mylar film
- 2 Foam cushion heat barrier
3. Fiber layer for strength
- 4 Stiff thermal board layer for extra strength
- 5 Fiber layer for strength
- 6 Foam cushion heat barrier
- 7 Reflective mylar film





**NEW!**

Available Now!



## Patriotic USA Flag Custom Auto Shade Made in the USA

- Custom made into 2,800 different automotive windshield applications.
- Multi-layered material with a highly detailed American flag image that reflects harmful UV rays.
- Reduces inside temperature up to 40 degrees Fahrenheit.
- Protects interior from heat and UV damage, keeps steering wheel and shift knob comfortable to the touch.
- Easy to roll up and attached hook and loohook and loop strap makes this item easy to stow.
- Finished with a non-abrasive velour binding.
- Lifetime warranty.



- Available Wall Display





**NEW!**

Available Spring 2019



## Custom Racing Flag Auto Shade Made in the USA

- Custom made into 2,800 different automotive windshield applications.
- Multi-layered material with a highly detailed Racing flag image that reflects harmful UV rays.
- Reduces inside temperature up to 40 degrees Fahrenheit.
- Protects interior from heat and UV damage, keeps steering wheel and shift knob comfortable to the touch.
- Easy to roll up and attached hook strap makes this item easy to stow.
- Finished with a non-abrasive velour binding.
- Lifetime warranty.



- Available Wall Display







- Custom made into 2,800 different automotive windshield applications.
- Multi-layered material with a silver metalized outer film that reflects harming UV rays.
- Reduces inside temperature up to 40 degrees Fahrenheit.
- Protects interior from heat and UV damage, keeps steering wheel and shift knob comfortable to the touch.
- Easy to roll up and attached hook and loop makes this item easy to stow.
- Finished with a non-abrasive velour binding.
- Lifetime warranty.



• Mini sunshade counter display



• Full color floor display

- Custom silkscreen corporate dealership name and logo







## Custom Gold Auto Shade™



- Custom made into 2,800 different automotive windshield applications.
- Multi-layered material with a gold metalized outer film that reflects harming UV rays.
- Reduces inside temperature up to 40 degrees Fahrenheit.
- Protects interior from heat and UV damage, keeps steering wheel and shift knob comfortable to the touch.
- Easy to roll up and attached hook and loop makes this item easy to stow.
- Finished with a non-abrasive velour binding.
- Lifetime warranty.



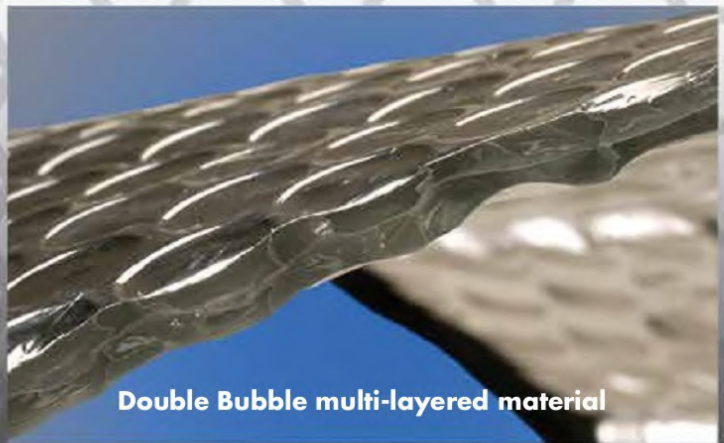


**NEW!**  
Available Now!



**CUSTOM  
DOUBLE BUBBLE  
AUTO SHADE™**

- Custom made into 2,800 different automotive windshield applications.
- Double Bubble multi-layered material with a silver metalized film that reflects harming UV rays.
- Reduces inside temperature up to 40 degrees Fahrenheit.
- Protects interior from heat and UV damage, keeps steering wheel and shift knob comfortable to the touch.
- Easy to roll up and attached hook strap makes this item easy to stow.
- Finished with a non-abrasive velour binding.
- Lifetime warranty.



**Double Bubble multi-layered material**



**NEW!**

Available Now!



- Blocks 99% of Damaging UV Rays
- Cools and Protects Your Vehicle's Interior
- Patented Unique Outline & Stand Up Pillars Which Allow for Better Fit & Stand Up Performance
- Floor Display Contains 18 Units—12 Standard and 6 Jumbo Stand Up Auto Shades™
- Quality Construction
- USA Patent No.: US 9,643,476 B2
- International Patents Pending



- Full color floor display



**NEW!**

**Available Now!**



## Semi-Custom Dealer Advertising/ Branding Auto Shades

- Unsurpassed Marketing and Branding Results through a tasteful presentation of dealer name and logo on laser reflective Semi-Custom Auto Sun Shades.
- Quality stand-up sun shade product for long term durability.
- Promotes Dealer Name/Brand, while protecting customer's vehicle interior from heat build-up and UV damage.
- Cost effective dealer advertising campaign.







## Custom Auto SnowShade™

- Custom made for over 2,800 different automotive windshield applications.
- Superior quality complex four-layered material.
- Outer layer is a clear coat film which ensures material will never absorb liquids.

- Second layer is a metalized imprinted film in a visually appealing snowflake design.
- Third layer is an industrial strength mesh liner providing both flexibility and durability in changing temperatures and challenging conditions.
- Fourth layer is black highly resilient PVC.
- Finished with a UV resistant, non-absorbing nylon binding.
- Installation and security are easy with the quick snap release one inch strap system.
- Easy to roll up and store in the provided lightweight draw-string storage bag.
- Lifetime warranty.



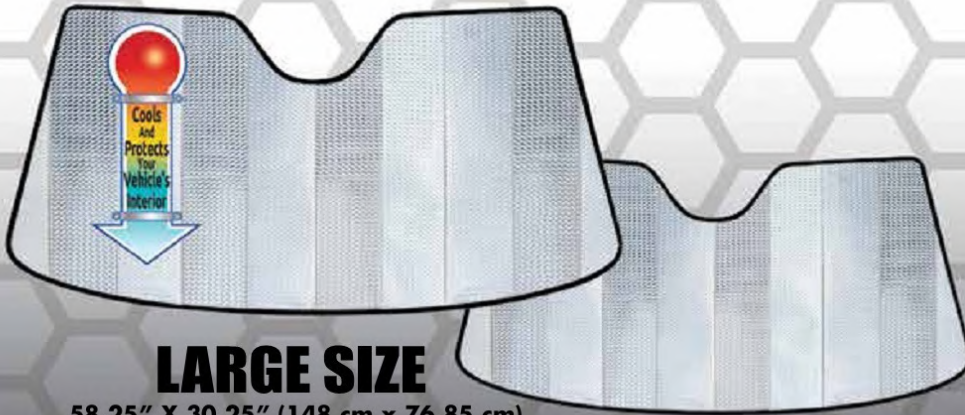


**NEW!**

Available Now!



- Universal Laser Imaged Highly Reflective Auto Shade
- Multi-Layered Durable Construction
- Unique Outline Which Allow for Better Fit & Stand Up Performance
- Cools and Protects Your Vehicle's Interior



**LARGE SIZE**

58.25" X 30.25" (148 cm x 76.85 cm)

**REGULAR SIZE**

54.5" X 29" (138.40 cm x 73.65 cm)







OFFICIAL LICENSED PRODUCT



• **Corvette Auto Shades for**



C5



C6



C7



- Available in Silver, Silver/Black, Silver/Red

• **Corvette Car Covers for**

C5

C6

C7



• **Corvette Fender Mats**



C5

C6

C7

- Additional GM logo styles available

• **Corvette Seat Belt Cushions**

C5  
Black

C6  
Charcoal

C7  
Red

Yellow

Tan





# INTRO-GUARD

FULL CUSTOM CAR COVER™



- Full color vehicle shaped patented retail packaging



• Custom mirror pockets



• All weather strap™



• Draw-string storage bag



• Cable lock kit





OFFICIAL  
LICENSED PRODUCT

- 150 Denier woven polyester fabric, Intro-Guard™ coated with an aluminized polyurethane acrylic.
- Soft and non-abrasive to clear coat finishes.
- Extremely lightweight and highly protective.
- Storage space approximately the size of a 12 pack of soda.
- Nearly waterproof, yet breathable.
- Will not absorb water like most perforated fabrics.
- Custom tailored mirror pockets and eyelets for cable lock.
- Snug fit all around with long and low coverage to keep wheels clean.
- Comes with All Weather Lock Strap™ system. Positioned in front of the front wheels and behind the rear wheels making it more weather resistant.
- Also included: Storage bag and Cable Lock kit.
- Lifetime warranty



Learn more about windshield sun shades and snow covers we have.