



2017 PRODUCT  
CATALOG \\\



STEP SYSTEMS \\\ LIGHT MOUNTING SOLUTIONS \\\ BUMPERS \\\ JEEP GEAR \\\ ACCESSORIES

**TRUCK HERO**   
company





# CONTENTS

## // STEP SYSTEMS 2-3

- Podium LG / SS .....4-5
- Predator Pro..... 6-7
- N-DuraSTEP ..... 8-9
- RKR Rails ..... 10-11
- AdjustSTEP .....12-13
- Nerf Step..... 14-15
- Stainless Steel Nerf Step.....16-17

## // LIGHT MOUNTING SOLUTIONS 18-19

- O.R. Light Bars .....20-21
- Light Bars w/ Multi Mount..... 22
- Light Bars w/ Light Tabs..... 23
- Pre-Runner ..... 24
- Rear Runner..... 25
- LBM Brackets..... 26-27
- LED Roof Mounts ..... 28-29

## // BUMPERS 30-31

- M-RDS ..... 32-33
- RSP .....34-35
- HD..... 36-37
- RDS.....38-39
- RBS-H .....40-41

## // JEEP GEAR 42-43

- Windshield Mounts .....44-45
- RSP Bumpers..... 46
- RBS Rear Bumpers .....47
- Rock Rails ..... 48-49

## // ACCESSORIES 50-51

- Wire Mesh Grilles ..... 52-53
- Modular Roof Rack..... 54-55
- Bed Bars & Tire Cages..... 56-57





# STEP SYSTEMS

# STEP SYSTEMS

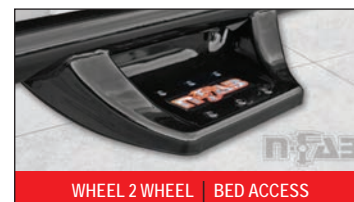


## AdjustSTEP



WHEEL 2 WHEEL | ADD-A-STEP BED ACCESS

## N-DuraSTEP



WHEEL 2 WHEEL | BED ACCESS

## RKR Rails



with detachable steps

CAB LENGTH | WHEEL 2 WHEEL

## Podium LG & SS



POLISHED STAINLESS | TEXTURED BLACK

## Predator Pro



CAB LENGTH

## Nerf Step



WHEEL 2 WHEEL | BED ACCESS | CAB LENGTH

## Stainless Steel Nerf Step



WHEEL 2 WHEEL

# CONFIGURATIONS

## CAB LENGTH

Spans the distance from the back of the fender well opening to the rear of the vehicle's cab. Regular cab models have one step per side while Quad Cab and Crew Cab models have two steps per side.



## BED ACCESS

Spans the distance from the back of the front fender well opening to the front of the rear fender well opening. Regular Cab models have two steps per side while Quad Cab and Crew Cab models have three steps per side.



## WHEEL 2 WHEEL

Spans the distance from the back of the front fender well to front of the rear fender well opening. Regular Cab models have one step per side while Quad Cab and Crew Cab models have two steps per side.



STAINLESS STEEL FINISH IS ONLY AVAILABLE IN WHEEL 2 WHEEL 4 STEP CONFIGURATIONS



# Podium LG & SS



LG | SS  
**PODIUM STEPS**  
FULL STAINLESS STEEL CONSTRUCTION



- \\ Main tube fits high & tight to the vehicle body for a clean modern style
- \\ Patented N-FAB hoop step design featuring an all-new expanded and enclosed sure grip step plate, for the ultimate vehicle access in any condition
- \\ Stainless steel construction in either a high polish finish, or textured black powder coat finish for long lasting durability in all conditions
- \\ Fully welded 1-piece construction for strength, long lasting durability & ease of installation
- \\ Drop down step design and location is engineered to allow for ease of access on stock or lifted vehicles
- \\ Available in cab length configuration
- \\ Lifetime finish warranty on polished stainless steel, 5-Year finish warranty on textured black finish / lifetime workmanship warranty

\\ ALL NEW  
HOOP STEP





# Predator Pro



- \\ One of the tightest fitting main tubes in the industry to create the ultimate in clean style
- \\ Patented drop down hoop step with new larger step area for ease of access for stock or lifted vehicles
- \\ Dimpled step pad for secure footing in any condition
- \\ Full Aluminum Construction for durability in any conditions
- \\ Fully welded 1-piece design for strength and ease of installation
- \\ Available in cab length configurations
- \\ Standard color is textured black
- \\ 5-Year finish warranty / lifetime workmanship warranty

\\ COMING  
IN AUGUST

PREDATOR  
PRO



\\ ALUMINUM  
HOOP STEP



# N-DuraSTEP



- || The 3" diameter .084 heavy wall steel main bar allows for a strong and stable mounting location for each step
- || All steps & mounting brackets are welded to the main bar for strength, durability and ease of installation
- || Step load rating is weight-tested at 465 lbs., recognized as one of the highest in the industry
- || Both bed access & wheel-2-wheel configurations available
- || Standard color is a semi-gloss black powder coating, using N-FAB's 3-stage powder coating process
- || 5-Year finish warranty / lifetime workmanship warranty

- || An oversized step plate with enclosed back provides a large, secure step surface
- || N-FAB's market changing design places the main bar tight to the body for a clean modern style
- || Patented drop down step design and location is engineered to allow for ease of access for stock or lifted vehicles

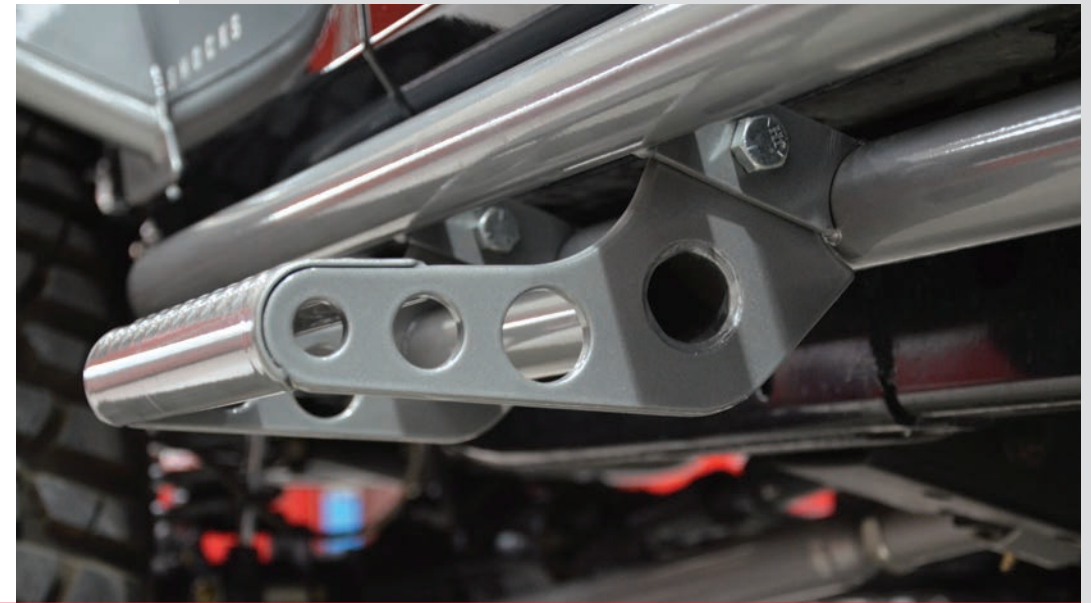
# N-DURA STEP



# RKR Rails



Detachable Step for RKR Rails  
(sold in pairs, sold separately)  
part# JPTS32



\\ N-FAB's patented detachable step option allows for ease of access when installed, with clearance & protection when removed (Steps sold separately & in pairs part no. JPTS32)

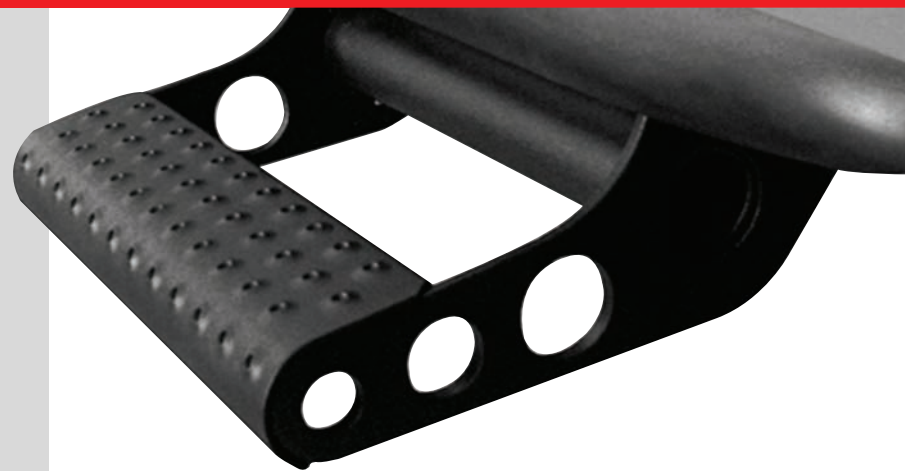
\\ Direct bolt-on applications, utilizing pre-existing factory mounts

\\ All mounting brackets are welded to the RKR-Rails for strength, durability and ease of installation

\\ Non-modular, dual-bar welded assembly with 1.75" main tube diameter, constructed to fit tightly along the body

\\ Standard color is a textured black powder coating, using N-FAB's 3-stage powder coating process

\\ 5-Year finish warranty / lifetime workmanship warranty



RKR  
RAILS



JPTS32 Optional  
Steps Installed



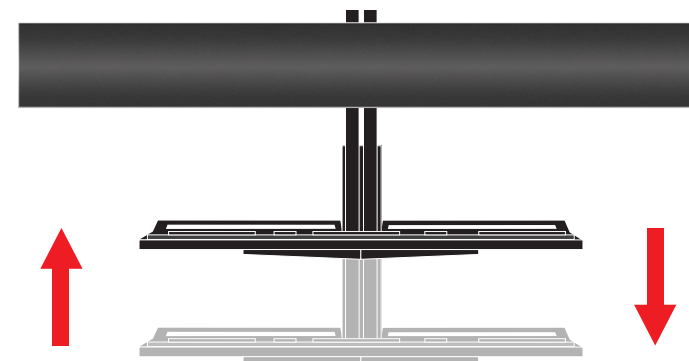
# AdjustSTEP



# ADJUST STEP

- \\ 3" .084 wall main bar fits tight to body
- \\ Fully welded construction, load-rating of 465 lbs.
- \\ Step height adjusts 5.5" for the perfect fit
- \\ Pre-installed bracket for add-a-step bed access step
- \\ Standard color textured black powder coating
- \\ 5-Year finish / lifetime workmanship warranty

Patented mounting system allows for the step to be lowered or raised for the perfect step height.





# Nerf Step



## NERF STEP



- \\ Market changing design places the main bar tight to the body for a clean modern look
- \\ Patented drop down step design and location is engineered to allow for ease of access on stock or lifted vehicles
- \\ The 3" diameter .084 heavy wall steel main bar allows for a strong and stable mounting location for each step
- \\ Mounting brackets, step pads and hoops are fully welded 1-piece design for strength and ease of installation
- \\ Available in three configurations: Wheel-2-Wheel, Bed Access & Cab Length
- \\ Standard colors are a gloss black or textured black finish, using N-FAB's 3-stage powder coating process
- \\ 5-Year finish warranty / lifetime workmanship warranty



## CONFIGURATIONS





Stainless Steel  
**Nerf Step**



STAINLESS  
STEEL



NERF  
STEP

- \\ With a 3" main tube diameter, our 14-gauge 304 marine grade polished stainless steel bar fits high & tight to the vehicle body
- \\ Non-modular construction for strength, long lasting durability & ease of installation
- \\ Patented drop down step design and location is engineered to allow for ease of access on stock or lifted vehicles
- \\ Available in wheel-2-wheel configuration
- \\ Lifetime finish warranty / lifetime workmanship warranty





# LIGHT MOUNTING SOLUTIONS

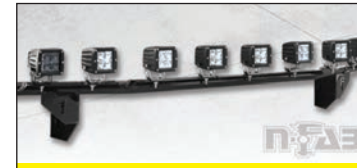


O.R. Light Bar



w/ MULTI-MOUNT FOR LED

Light Bar



w/ MULTI-MOUNT FOR LED

Light Bar



w/ LIGHT TABS

Pre-Runner



w/ LIGHT TABS

Rear Runner



w/ LIGHT TABS

LBM Brackets



w/ MULTI-MOUNT FOR LED

LED Roof Mounts



49 SERIES | 50 SERIES





# O.R. Light Bar

w/ Multi-Mount LED



- \\ Over Rider Pre-Runner style gives an aggressive look and additional protection for mounted lights
- \\ Direct bolt-on for ease of install
- \\ Full length Multi-Mount System allows for mounting most brands & multiple configurations of LED light bars and pods
- \\ All applications mounts up to a 30" LED light bar
- \\ Available finish gloss black or textured black powder coat, using N-FAB's 3-stage powder coating process
- \\ 5-Year finish warranty / lifetime workmanship warranty



## O.R. LIGHT BAR



Sample of patent pending Multi-Mount System for LED, each application will have slightly different design to fit vehicle correctly.

O.R. Light Bar applications will mount up to a 30" LED light bar with multiple combinations possible.



# Light Bar w/ Multi-Mount LED



# Light Bar w/ Tabs



- \\ Allows for a clean and easy way to mount LED lights to the front of a vehicle.
- \\ Full length Multi-Mount System allows for mounting most brands & multiple configurations of LED light bars & pods
- \\ Available finishes gloss black or textured black powder coat, using N-FAB's 3-stage powder coating process
- \\ Made out of 1.5" .095 wall tubing for strength and durability
- \\ 5-Year finish warranty / lifetime workmanship warranty

Sample of patent pending Multi-Mount for LED, each application will have slightly different design to fit application.

Multiple combinations of LED light bar and pods are possible and will vary slightly by application.



- \\ Allows for a clean and easy way to mount up to (4) 9" lights
- \\ Made out of 1.5" .095 wall tubing for strength and durability
- \\ Available finishes gloss black or textured black powder coat, using N-FAB's 3-stage powder coating process
- \\ 5-Year finish warranty / lifetime workmanship warranty





# Pre-Runner w/ Tabs



- \\ Classic Pre-Runner look
- \\ Mounts up to (3) 9" round lights
- \\ Fully welded design for strength and durability
- \\ Available finish gloss black or textured black powder coat, using N-FAB's 3-stage powder coating process
- \\ Made out of 1.5" .095 wall tubing for strength and durability
- \\ 5-Year finish warranty / lifetime workmanship warranty



# Rear Runner w/ Tabs



- \\ Mounts to the rear bumper to give additional protection
- \\ Mounts up to (2) 6" lights or 2 pod style LED lights for additional lighting when backing up
- \\ Built out of 1.5" .095 wall tubing
- \\ Fully welded 1-piece design for strength and durability
- \\ Available finish gloss black or textured black powder coat, using N-FAB's 3-step powder coating process
- \\ 5-Year finish warranty / lifetime workmanship warranty
- \\ Does not block factory hitch





# LBM Brackets

w/ Multi-Mount for LED



## LBM BRACKETS

- \\ Allows mounting of LED lights into the factory openings for a clean stealth look
- \\ Multi-mount system allows for mounting of most brands and multiple configurations of LED lights
- \\ Direct bolt-on, no drilling for ease of install
- \\ Standard color is textured black powder coating using N-FAB's 3-stage powder coating process
- \\ 5-Year finish warranty / lifetime workmanship warranty





# LED Roof Mounts

49 Series / 50 Series



N-FAB has launched 3 series of LED roof mounts to accommodate the difference in LED light bar sizes.

## 40 SERIES

fits a straight LED light bar with single side post mount that is from 40 1/2" to 41 3/4"

## 49 SERIES

fits a straight LED light bar with single side post mount that is from 49" to 50 3/8"

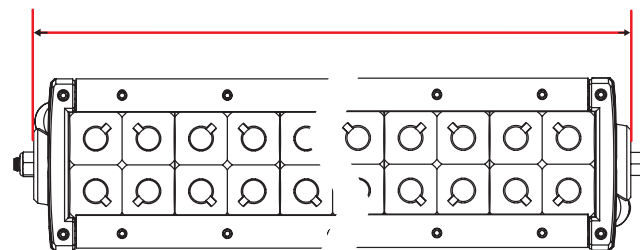
## 50 SERIES

fits a straight LED light bar with single side post mount that is from 50 1/2" to 51 3/4"

# LED ROOF MOUNTS

- Constructed out of cold-rolled steel for strength and durability
- Available finish gloss black or textured black powder coat, using N-FAB's 3-stage powder coating process
- Available in 49 series and 50 series to fit your vehicle and LED light correctly
- 5-Year finish warranty / lifetime workmanship warranty

Measure length of LED from end of housing to end housing.



Total length of housing 49" - 50 3/8" use 49 Series  
Total length of housing 50 1/2" - 51 3/4" use 50 Series





# BUMPERS



## HD Bumpers



HD FRONT AND REAR BUMPERS

## RDS Bumpers



RDS | URDS | RDB | URB

## RBS-H Rear Bumpers



RBS-H



## M-RDS Bumpers



MULTI-MOUNT FOR LED

## RSP Bumpers



DIRECT FIT LED | MULTI-MOUNT | WINCH





# M-RDS Bumpers

w/ Multi-Mount for LED



## M-RDS

## BUMPERS

- \\ Pre-Runner radius style bumper follows the contours of the vehicle for a clean aggressive look
- \\ 1-piece fully welded design using 1.75" .095 wall tubing for strength and durability
- \\ Easy installation, bolts directly onto the factory bumper mounting locations, no cutting or drilling required
- \\ Brushed aluminum lower skid plate included
- \\ Modular side plates now available
- \\ 5-Year finish warranty / lifetime workmanship warranty
- \\ Standard colors are gloss black or textured black powder coat using N-FAB's 3-stage powder coating process

Sample of 40" or 30" Multi-Mount System



Multi-Mount System for LED is located in the center of each bumper to allow for mounting of multiple combinations of LED light bars and pods.

Most brands of LED lights are able to be mounted

Bumpers will mount up to a 40" LED light bar (Colorado, FJ, Tacoma mounts up to a 30" LED light bar)





# RSP Bumpers

Direct Fit LED | Multi-Mount | Winch



# RSP BUMPERS

RSP Pre-Runner Bumpers with direct fit LED allows for mounting of one to two 38" LED light bars. Applications that mount 2 LED light bars have a slot on each side that allows for multiple configurations of 38" LED light bars. (2 Tacoma mounts 30" LED lights)



\\ Mounts up to (2) 38" LED light bars (depending on bumper design)

\\ Aggressive Pre-Runner style and light weight design

\\ Winch option available on 09-14 Ford F-150 / 10-14 Ford Raptor and 07-16 Tundra

\\ Designed to allow for a more aggressive approach angle and larger tires

\\ Lower brushed aluminum skid plate included

\\ 1-piece fully welded design using 1.75" .095 wall tubing for strength and durability

\\ Easy install, bolts directly onto the factory bumper mounting locations, no cutting or drilling required

\\ Standard colors are gloss black or textured black powder coat using N-FAB's 3-stage powder coating process

\\ Includes anti-theft hardware for mounting LED light bars

\\ 5-Year finish warranty / lifetime workmanship warranty



Available in direct fit LED that holds up to 2 38" lights or with a 40" Multi-Mount that allows mounting multiple configuration of LED lights



# HD Bumpers

Front & Rear Bumpers



# HD BUMPER

\\ Style and protection for your truck

\\ Constructed as a one-piece assembly from 3/16" and 1/4" cold rolled steel

\\ Includes extra bright driving and fog lights

\\ Can accommodate up to a 16,500lb winch

\\ Finished in two-stage textured black power coat

\\ 5-Year limited warranty / lifetime workmanship warranty





# RDS Bumpers

RDS | URDS | RDB | URB



## RDS

Upper 40" Radius Mount and Skid Plate



## RDB

Upper 40" Radius Mount without Skid Plate



## URDS

Skid Plate without Upper Radius Mount



## URB

Without Upper Radius Mount and Skid Plate



- \\ Designed specifically for 2009-14 Ford F-150 & 10-14 Raptor
- \\ Aggressive lightweight Pre-Runner style bumper
- \\ RDS & RDB include 40" upper radius LED light bar mount
- \\ URDS & RDS include lower brushed aluminum skid plate (F-150 EcoBoost must use non-skid plate models or modify skid plate mounting bracket)
- \\ 1-piece fully welded design using 1.75" .095 wall tubing for strength and durability
- \\ Easy install, bolts directly onto the factory bumper mounting locations, no cutting or drilling required
- \\ 5-Year finish warranty / lifetime workmanship warranty
- \\ Standard colors are gloss black or textured black powder coat using N-FAB's 3-stage powder coating process



# RDS BUMPER



# RBS-H Bumpers

Rear Bumper



## RBS-H BUMPERS

- \\ Aggressive Pre-Runner style rear bumper
- \\ RBS-H allows retention of factory hitch
- \\ Built with 1.75" .095 wall tubing for strength and durability
- \\ Direct bolt-on design to factory mounting locations
- \\ Brushed aluminum skid plate included
- \\ License plate mounting location
- \\ Available in gloss black or textured black powder coat, using N-FAB's 3-stage powder coating process
- \\ 5-Year finish warranty / lifetime workmanship warranty







Windshield Mounts



RSP Bumpers



RBS Rear Bumpers



50" Modular



ALUMINUM WINDSHIELD MOUNTS

49 & 50 Series



WINDSHIELD MOUNTS

Rock Rails



WITH DETACHABLE STEPS





# Windshield Mounts

49 & 50 Series



MODULAR BRACKETS

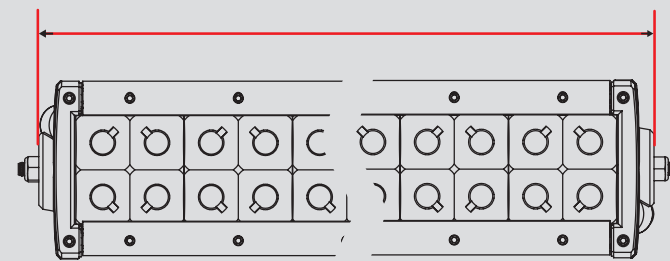
# Windshield Mounts

50" Aluminum Modular

- \ 50" Modular Overhead lighting solutions for your Jeep JK
- \ Available in a variety of lighting arrangements
- \ Constructed from heavy-duty yet lightweight 1/8" aluminum
- \ Textured black powder coat finish
- \ 5-Year limited warranty / lifetime workmanship warranty



Measure length of LED from end of housing to end housing.



Total length of housing 49" - 50 3/8" use 49 Series  
Total length of housing 50 1/2" - 51 3/4" use 50 Series

- \ 49 & 50 Series Windshield Mount lighting solutions for your Jeep Wrangler JK
- \ Upper mounting brackets bolt directly into factory A-Frame locations
- \ Available in a variety of lighting arrangements
- \ Constructed from 3/16" cold-rolled steel
- \ Textured black powder coat finish
- \ 5-Year limited warranty / lifetime workmanship warranty

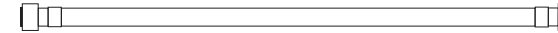


MOUNT CONFIGURATIONS

50" Multi-Mount Tab



Bar with No Tabs



Direct Fit 50" LED Light Bar



# Windshield Mounts

- \ Overhead lighting solutions for your Jeep
- \ Designed for conventional post mount lighting
- \ Constructed from durable steel
- \ Textured black powder coat finish
- \ 5-Year limited warranty / lifetime workmanship warranty



# RSP Bumpers



- \\ Provides vital under-body protection
- \\ Bolts directly to factory mounting locations
- \\ Bumper is constructed from 1.75" 0.95" wall tubing
- \\ Skid Plate is constructed from 3/16" brushed aluminum
- \\ Features a precision-cut N-FAB logo on non-winch bumpers
- \\ Treated inside and out for maximum corrosion resistance
- \\ Available in Winch and Non-Winch Models
- \\ 2 unique light mounting options either two 38" LED lights or 40" multi-mount tab
- \\ JK has a textured black power coat finish
- \\ 5-year finish warranty / lifetime structural warranty

## RSP BUMPERS



# RBS Rear Bumpers



- \\ Provides vital under-body protection
- \\ Bolts directly to factory mounting locations
- \\ Bumper is constructed from 1.75" 0.95" wall tubing
- \\ Skid plate is constructed from 3/16" brushed aluminum
- \\ Treated inside and out for maximum corrosion resistance
- \\ JK has a textured black power coat finish
- \\ Not compatible with factory tire carrier or hitch
- \\ 5-year finish warranty / lifetime structural warranty

## RBS BUMPERS



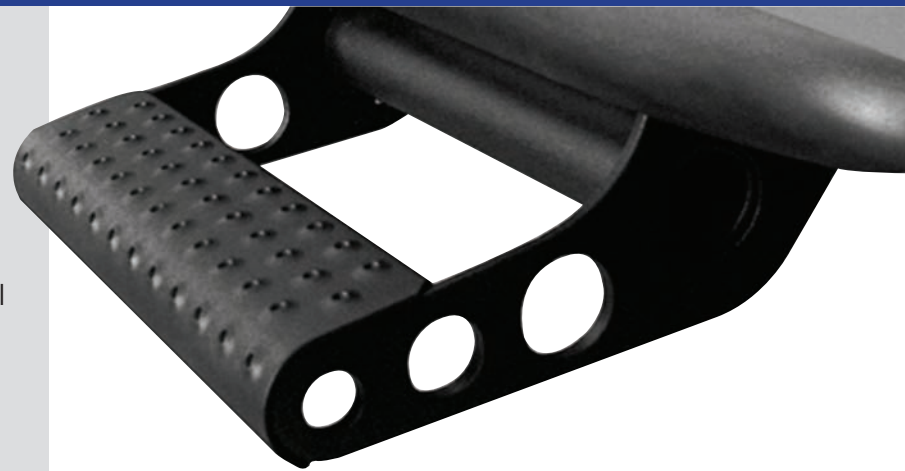


# Rock Rails



## ROCK RAILS

- \\ Provide superior protection and added style
- \\ Bolts directly to factory body buckets for strength and ease of install
- \\ Dual Rail Construction from 0.120" wall 1.75" tubular steel
- \\ Treated inside and out for corrosion resistance
- \\ Textured black power coat finish
- \\ Optional Detachable step allows for ease of access to vehicle
- \\ 5-year finish warranty \ lifetime structural warranty





# ACCESSORIES



Bed Bars & Tire Cages



Sliding Channel  
Tire Carrier



TACOMA | TUNDRA

Bed Mounted  
Rapid Strap



RED STRAP | BLUE STRAP | BLACK STRAP

Bed Mounted  
Tire Carrier



RED STRAP | BLUE STRAP | BLACK STRAP



OPTIONAL STRAP COLORS



Wire Mesh Grilles



MATTE BLACK | CHROME STUDS

Roof Racks

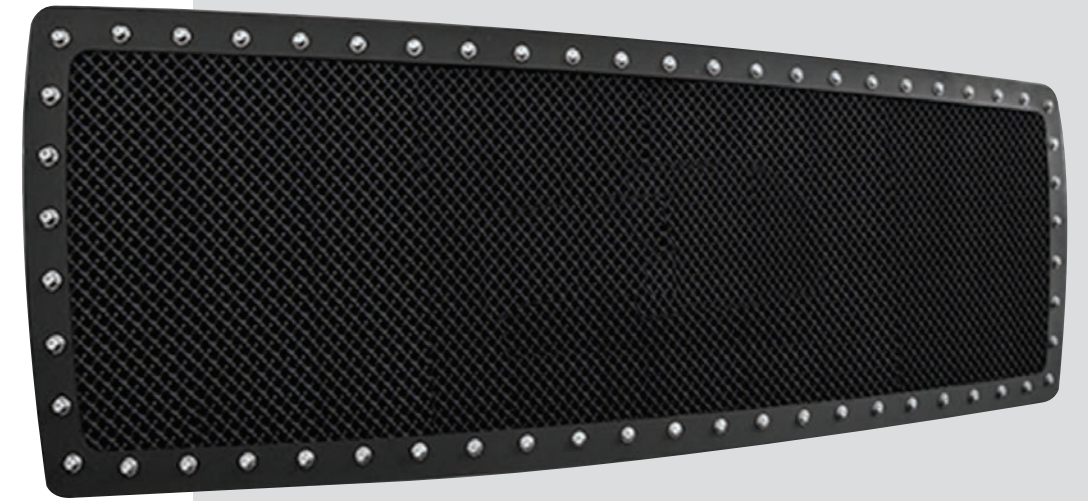


MODULAR ALUMINUM





# Wire Mesh Grilles



## WIRE MESH GRILLES

- \\ Wire Mesh Grille gives your truck a face-lift and adds style
- \\ Precision built and designed specifically for each application
- \\ Feature a chrome "lug" treatment around the perimeter of the grille
- \\ Constructed from durable 304 marine grade stainless steel
- \\ Satin black powder coat finish
- \\ 5-Year finish warranty





# Modular Roof Rack

Jeep JK, 4 Runner, Full Size Trucks & Universal Applications



## MODULAR ROOF RACK



\\ All aluminum lightweight construction with a load rating up to 150lbs

\\ Multiple mounting locations for LED lights on the front and rear of roof rack

\\ Textured black powder coat finish, using N-FAB's 3-stage powder coating system

\\ Modular construction to allow for shipping via UPS / FedEx

\\ Center rails designed with anchor points for tie down bungees

\\ Aerodynamic design limits wind noise

\\ Universal and application specific models

\\ Manufactured in Houston, Texas USA

\\ 5-Year finish warranty / lifetime workmanship warranty





# Bed Bars & Tire Cages



Sliding Channel

## Tire Carrier

- \ \ Designed Specifically for Toyota Tundra and Tacoma with Factory rails
- \ \ Fully welded 1-piece construction
- \ \ Straps included
- \ \ 5-Year finish warranty / lifetime structural warranty



Bed Mounted

## Rapid Strap

- \ \ Available with red, blue or black strap
- \ \ Easy and quick way to secure a full size spare
- \ \ Mounts using 3 clips that can be mounted to most surfaces



- \ \ Allows for mounting up to 3 tires
- \ \ Fully welded construction
- \ \ Mounts using factory bed bolts
- \ \ Straps included
- \ \ 5-Year finish warranty / lifetime structural warranty



Bed Mounted

## Tire Carrier

- \ \ Pre-Runner style tire carrier
- \ \ Strap included
- \ \ Able to be mounted to most surfaces

