



PERFORMANCE



- » Increase Driving Control
- » Improve Mechanical Suspension
- » Optimize Engine Operation

**INCREASED
PERFORMANCE FOR
HARDWORKING TRUCKS**



**OIL FILTER
RELOCATION KITS**



LEVELING KITS



SPRING KITS



AIR HORNS

APPLICATION GUIDE & PRODUCT CATALOGUE



PACBRAKE[®] COMPANY



As a proud family run business since 1961, Pacbrake Company™ has been committed to providing its customers with the highest quality products for a wide range of vehicles. Over the years, the expertise and innovation of Pacbrake's dedicated staff transformed the company from an engine brake distributor, into an industry leading manufacturer of automotive products. To this day, Pacbrake remains devoted to improving its product design through continuous research and development in order to provide customers with the most advanced automotive systems available, setting the standard for performance and durability across the trucking industry.

Behind every Pacbrake product stands a team of qualified engineers, state of the art manufacturing facilities and an internationally recognized ISO 9001:2015 quality management system.

Making headway into the aftermarket, Pacbrake is proud to introduce their Performance line of heavy duty performance parts that help increase drive control, improve mechanical suspension as well as optimize engine operation.



HISTORY

1960-1980

- *Pacbrake Company™ incorporates in 1961*

1980-1990

- *Pacbrake develops new engine brake technology for Detroit Diesel™, Caterpillar™ and Cummins™ engines*
- *Pacbrake becomes the first company to patent a combination engine brake that utilizes an exhaust valve*

1990-2000

- *Pacbrake starts supplying engine and exhaust brakes to Freightliner™, Kenworth™ and Detroit Diesel™*
- *Becomes the largest North American exhaust brake manufacturer*

2000-2010

- *Starts supplying valves to the US Military*
- *Pacbrake expands R&D efforts and starts development of aftermarket products*
- *Starts supplying thermal management valves to Navistar™*
- *Expands aftermarket product line to include more tow/haul solutions (air springs, in-cab controls and onboard air)*



2010-PRESENT

- *Pacbrake celebrates 50 years in business*
- *Supplies first hot EGR valve to Navistar™*
- *Develops the first engine brake for Cummins™ ISB engine*
- *Launches the first engine shut-off valve for the oil and gas industry*
- *Develops new heavy duty air compressor line*
- *Pacbrake supplies first onboard air system for an OEM*
- *Pacbrake introduces heavy duty performance parts featuring leveling kits, air horns, springs and more*

The contents of this catalogue are subject to change without notice. Contact Pacbrake for the most up-to-date information on our products

AIR HORNS

Let'em know you're there with Pacbrake air horns kits. Premium kits come with a horn and an onboard air kit. For those with an onboard air system Pacbrake also offers basic kits.

APPLICATION	YEAR	MODEL	KIT #
AIR HORNS			
Premium Kits		<i>For vehicles without an Onboard Air System</i>	
Premium Large Horn	Universal		HP10238
Premium Dual Horns	Universal		HP10213
Premium Horn Trio	Universal		HP10237
Premium Triple Train Horn	Universal		HP10314
Basic Kits		<i>For vehicles with an Onboard Air System</i>	
Basic Large Horn	Universal		HP10234
Basic Dual Horns	Universal		HP10073
Basic Horn Trio	Universal		HP10235
Basic Triple Train Horn	Universal		HP10254

LARGE HORN

PACBRAKE AIR OPERATED, LARGE AIR HORNS ARE MADE FROM CAST ALUMINUM WITH A CHROME FINISH.



PREMIUM KIT | HP10238



PREMIUM KITS CONTAIN:

- All components from the basic kit
- HP325 12VDC
- Half gallon air tank (C11940)
- Curly hose air accessory kit (C11657)
- All necessary wiring, harnesses, fittings & fasteners

BASIC KIT | HP10234



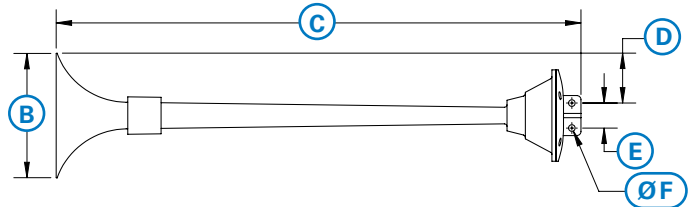
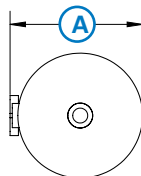
- For vehicles with onboard air systems

SPECIFICATIONS

DECIBEL RATING AT 6 M [20 FT]	110 db @ 100 psig (gauge) [689 kPa]
FUNDAMENTAL FREQUENCY	1800 to 3550 Hz
OPERATING TEMPERATURE RANGE	-40°F to 248°F [-40°C to 120°C]
OPERATING AIR PRESSURE	100 to 135 psig (gauge) [689 to 931 kPa]
ACTUATION TYPE	Manual or solenoid
AIR INLET PORT	1/4" (-4) NPT

HP10236

- Weight: 2.4 lbs [1.1 kg]
- A Width: 6.30" [160 mm]
- B Height: 5.91" [150 mm]
- C Length: 24.80" [640 mm]
- D Height: 2.36" [60 mm]
- E Bolt Spacing: 1.14" [29.0 mm]
- F Mounting Holes: .31" [7.9 mm]



VEHICLE ACCESSORIES

VEHICLE ACCESSORIES

Air Horns

- Large Horn Kits 2
- Triple Train Horn Kits 4
- Dual Horns Kits 5
- Horn Trio Kits 5

Leveling Kits

- Chevrolet Kits 6
- Dodge Ram Kits 6
- GMC Kits 6
- Toyota Kits 6

Max Flow Elbow

- Dodge Kit 8

Oil Filter Relocation Kits

- Dodge Kits 9
- Universal Kits 9

Spring Kits

- Basic Kits 11
- Premium Kits 11
- Spring Kits 11
- Governor Spring Kits 11

Switches

- Switch-Pac Kits 12
- Foot Switch Kit 12
- 4WD 2 Wheel Low Kit 13
- Performance Override Kit 13

Tie Rod Sleeves

- Chevrolet/GM Kits 14



LEVELING KITS



SPRING KITS



OIL FILTER RELOCATION KITS



MAX FLOW ELBOW



TIE ROD SLEEVES



SWITCHES



AIR HORNS



Performance Solutions FOR HARDWORKING TRUCKS



AFTERMARKET BY
PACBRAKE

UNIVERSAL
APPLICATIONS

EASY
INSTALLATION

HEAVY DUTY
DESIGN & BUILD

Truck Owner: Travis Haecker
Sponsored by Pacbrake



BRINGING THE NOISE

AIR HORNS

Let'em know you're there with PacBrake Air Horns



Universal Applications



Premium kits come with an air compressor and air tank
Basic kits for those who already have onboard air



Heavy duty design and build – Cast aluminum horns with chrome or matte black finish and heavy duty components



Easy Install – All necessary wiring, harnesses, fittings and fasteners



Large, Dual or Trio horn configurations to choose from



PACBRAKE

AIR HORNS

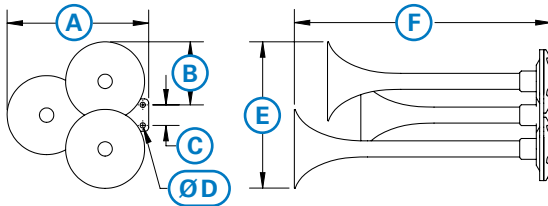
TRIPLE TRAIN HORN

PACBRAKE AIR OPERATED, TRIPLE TRAIN HORNS ARE MADE WITH CAST STAINLESS STEEL AND ZINC ALLOY WITH A CHROME FINISH.



SPECIFICATIONS

DECIBEL RATING AT 6 M [20 FT]	110 db @ 100 psig (gauge) [689 kPa]
FUNDAMENTAL FREQUENCY	300 to 550 Hz
OPERATING TEMPERATURE RANGE	-40°F to 248°F [-40°C to 120°C]
OPERATING AIR PRESSURE	85 to 150 psig (gauge) [345 to 1034 kPa]
ACTUATION TYPE	Manual or solenoid
AIR INLET PORT	1/4" (-4) NPT



PREMIUM KIT | HP10314



PREMIUM KITS CONTAIN:

- All components from the basic kit
- HP325 12VDC compressor (HP10143)
- Half gallon air tank (C11940)
- Curly hose air accessory kit (C11657)
- All necessary wiring, harnesses, fittings & fasteners

BASIC KIT | HP10254



- For vehicles with onboard air systems

HP10282

Weight: 8.0 lbs [3.6 kg]
A Width: 11.8" [300 mm]
B Height: 5.0" [125 mm]
C Bolt Spacing: 2.0" [50.8 mm]
D Mounting Hole: 0.375" [9.5 mm]
E Height: 11.0" [280 mm]
F Length: 15.3" [390 mm]

MORE PRODUCTS FROM A NAME YOU TRUST



WIRELESS CONTROLS

Pacbrake Wireless Air Spring Controls give you the ability to adjust your air spring pressure with your phone from both inside and outside of the vehicle.

- Independent & Simultaneous Air Spring Controls
- 3 Customizable Presets
- Pre-assembled Plug & Play Harness
- Robust Heavy Duty Solenoids
- Simple Customization
- Easily Serviceable



DUAL HORNS

PACBRAKE AIR OPERATED, DUAL AIR HORNS ARE MADE WITH CAST ALUMINUM WITH A CHROME FINISH.

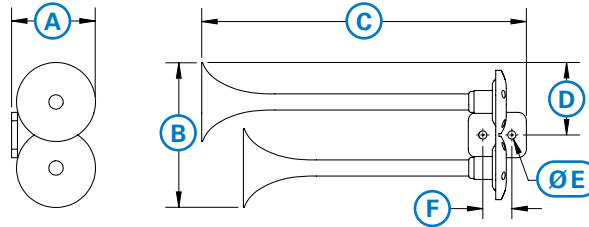


SPECIFICATIONS

DECIBEL RATING AT 6 M [20 FT]	125 db @ 100 psig (gauge) [689 kPa]
FUNDAMENTAL FREQUENCY	1800 to 3550 Hz
OPERATING TEMPERATURE RANGE	-40°F to 248°F [-40°C to 120°C]
OPERATING AIR PRESSURE	100 to 135 psig (gauge) [689 to 931 kPa]
ACTUATION TYPE	Manual or solenoid
AIR INLET PORT	1/4" (-4) NPT

HP10028

Weight: 1.4 lbs [0.6 kg]
A Width: 3.74" [95 mm]
B Height: 6.89" [175 mm]
C Length: 14.57" [360 mm]
D Height: 3.43" [87.2 mm]
E Mounting Holes: .38" [9.5 mm]
F Mounting Holes: 1.38" [35 mm]



PREMIUM KIT | HP10213



PREMIUM KITS CONTAIN:

- All components from the basic kit
- HP325 12VDC compressor (HP10143)
- Half gallon air tank (C11940)
- Curly hose air accessory kit (C11657)
- All necessary wiring, harnesses, fittings & fasteners

BASIC KIT | HP10073



- For vehicles with onboard air systems

HORN TRIO

PACBRAKE AIR OPERATED, AIR HORN TRIOS ARE MADE WITH CAST ALUMINUM & FINISHED IN A MATTE BLACK.

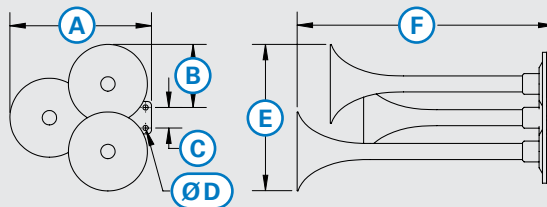


SPECIFICATIONS

DECIBEL RATING AT 6 M [20 FT]	125 db @ 100 psig (gauge) [689 kPa]
FUNDAMENTAL FREQUENCY	1800 to 3550 Hz
OPERATING TEMPERATURE RANGE	-40°F to 248°F [-40°C to 120°C]
OPERATING AIR PRESSURE	100 to 135 psig (gauge) [689 to 931 kPa]
ACTUATION TYPE	Manual or solenoid
AIR INLET PORT	1/4" (-4) NPT

HP10239

Weight: 1.7 lbs [0.7 kg]
A Width: 6.69" [170 mm]
B Height: 2.98" [75.8 mm]
C Bolt Spacing: .96" [24.5 mm]
D Mounting Hole: .25" [6.4 mm]
E Height: 6.89" [175 mm]
F Length: 11.61" [300 mm]



PREMIUM KIT | HP10237



PREMIUM KITS CONTAIN:

- All components from the basic kit
- HP325 12VDC compressor (HP10143)
- Half gallon air tank (C11940)
- Curly hose air accessory kit (C11657)
- All necessary wiring, harnesses, fittings & fasteners

BASIC KIT | HP10235



- For vehicles with onboard air systems

STAGE 1 LEVELING KITS

Install Pacbrake's lightweight aluminum spacers above the factory coil springs to level your truck's stance.

LIFETIME WARRANTY

HEAVY DUTY DESIGN & BUILD

EASY INSTALLATION

2" LEVELING KIT (CAST ALUMINUM) | HP10026

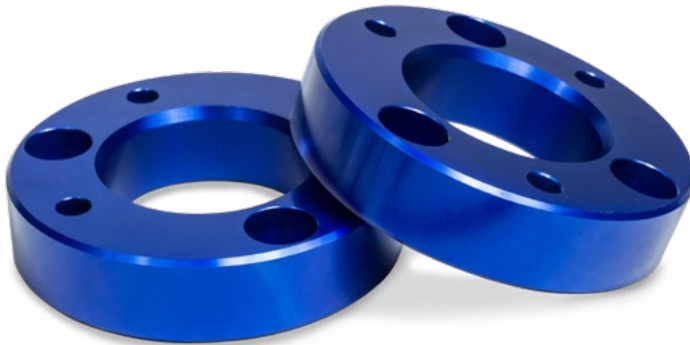
Diesel & gasoline engines produce incredible amounts of torque and are quite heavy, which in turn puts pressure on the front coil springs. Over time, the additional weight reduces the height of the front suspension, causing it to sit much lower than the rear. Pacbrake has a solution, by installing our lightweight cast aluminum spacers above the factory coil springs to level the vehicle's stance. **A coil spring compressor is required for installation.*



BLOW-OUT PRICING

SPECIFICATIONS	
MATERIAL	Cast aluminum
FINISH	Powder coated
HARDWARE	A2 Stainless Steel
LIFT HEIGHTS	2" [50.8mm]

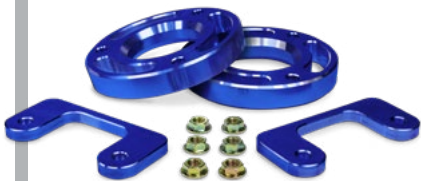
LEVELING KITS (BILLET ALUMINUM)



- Levels the stance of a vehicle by raising the front end a fixed amount
- Increases both the ground and wheel well clearance to allow for installation of larger tires
- Designed with safety and ease of installation in mind, these kits require no strut preloading, cutting, or modification of factory installed parts

SPECIFICATIONS	
MATERIAL	CNC machined 6061-T6 aluminum
FINISH	Blue anodized per MIL-A8625F type II, class 2
HARDWARE	Class 10.9 fasteners and grade B7 studs
LIFT HEIGHTS	1.5", 2" or 2.5" [38 mm, 50.8 mm or 57 mm]

GMC/CHEVROLET



DODGE RAM KIT



FORD KIT





APPLICATION

YEAR

DRIVE

LIFT

MAX
TIRE
SIZE



KIT

LEVELING KITS

Chevrolet

Colorado INCL. ZR2 (BILLET ALUMINUM)	2015-2020	2WD/4WD	1"	32"	HP10343
Silverado 1500 (BILLET ALUMINUM)	2007-2018	2WD/4WD	1.5" or 2.25"	33"	HP10251
Silverado 1500 (BILLET ALUMINUM)	2019-2020	2WD/4WD	2"	33"	HP10345

Dodge

Ram 1500 (CAST ALUMINUM)	1994-2001	4WD	2"	-	HP10026
Ram 1500 MEGA CAB (BILLET ALUMINUM)	1994-2009	4WD	2"	35"	HP10290
Ram 1500 NON-MEGA CAB (BILLET ALUMINUM)	2006-2020	4WD	2"	35"	HP10252
Ram 2500 (CAST ALUMINUM)	1994-2013	4WD	2"	-	HP10026
Ram 2500 (BILLET ALUMINUM)	1994-2013	4WD	2"	35"	HP10290
Ram 2500 (BILLET ALUMINUM)	2014-2020	4WD	1.75"	33"	HP10291
Ram 3500 (CAST ALUMINUM)	1994-2012	4WD	2"	-	HP10026
Ram 3500 (BILLET ALUMINUM)	1994-2013	4WD	2"	35"	HP10290
Ram 3500 (BILLET ALUMINUM)	2013-2020	4WD	1.75"	33"	HP10291

Ford

Ranger (BILLET ALUMINUM)	2019-2020	2WD/4WD	2.25"	32"	HP10346
F-150 (BILLET ALUMINUM)	2004-2020	2WD/4WD	2"	33" (2WD) 35" (4WD)	HP10253
F-250 SUPER DUTY (BILLET ALUMINUM)	2005-2010	4WD	2.5"	35"	HP10292
F-250 SUPER DUTY (BILLET ALUMINUM)	2011-2020	4WD	2.5"	35"	HP10294
F-350 SUPER DUTY (BILLET ALUMINUM)	2005-2010	4WD	2.5"	35"	HP10292
F-350 SUPER DUTY (BILLET ALUMINUM)	2011-2020	4WD	2.5"	35"	HP10294
F-450 SUPER DUTY (BILLET ALUMINUM)	2005-2010	4WD	2.5"	35"	HP10292
F-550 SUPER DUTY (BILLET ALUMINUM)	2005-2010	4WD	2.5"	35"	HP10292

GMC

Canyon INCL. ZR2 (BILLET ALUMINUM)	2015-2020	2WD/4WD	1"	32"	HP10343
Sierra 1500 (BILLET ALUMINUM)	2007-2018	2WD/4WD	1.5" or 2.25"	33"	HP10251
Sierra 1500 (BILLET ALUMINUM)	2019-2020	2WD/4WD	2"	33"	HP10345

Toyota

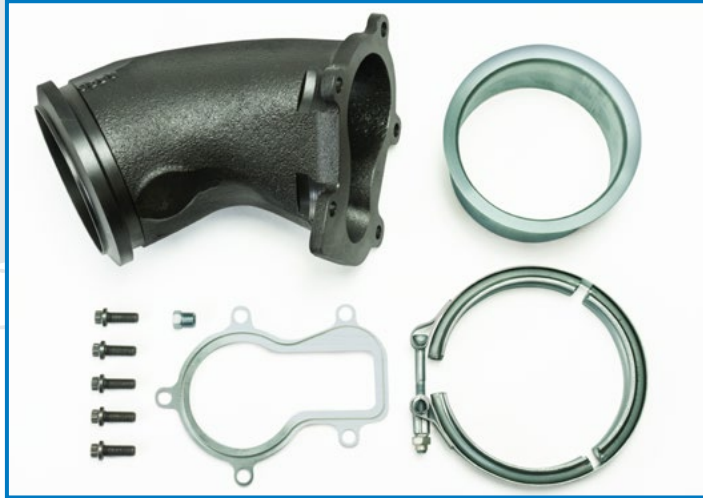
Tacoma (BILLET ALUMINUM)	2005-2020	4WD	2.25"	33"	HP10341
Tacoma Prerunner (BILLET ALUMINUM)	2005-2020	2WD	2.25"	33"	HP10341



MAX FLOW ELBOW

This 4" cast iron elbow is designed to replace the restrictive stock Dodge elbow and increase your exhaust flow. There is a pre-tapped 1/8" NPT port for pyrometer (can be used to measure exhaust system backpressure) and the elbow can be used when an InLine exhaust brake installation is required.

C44083



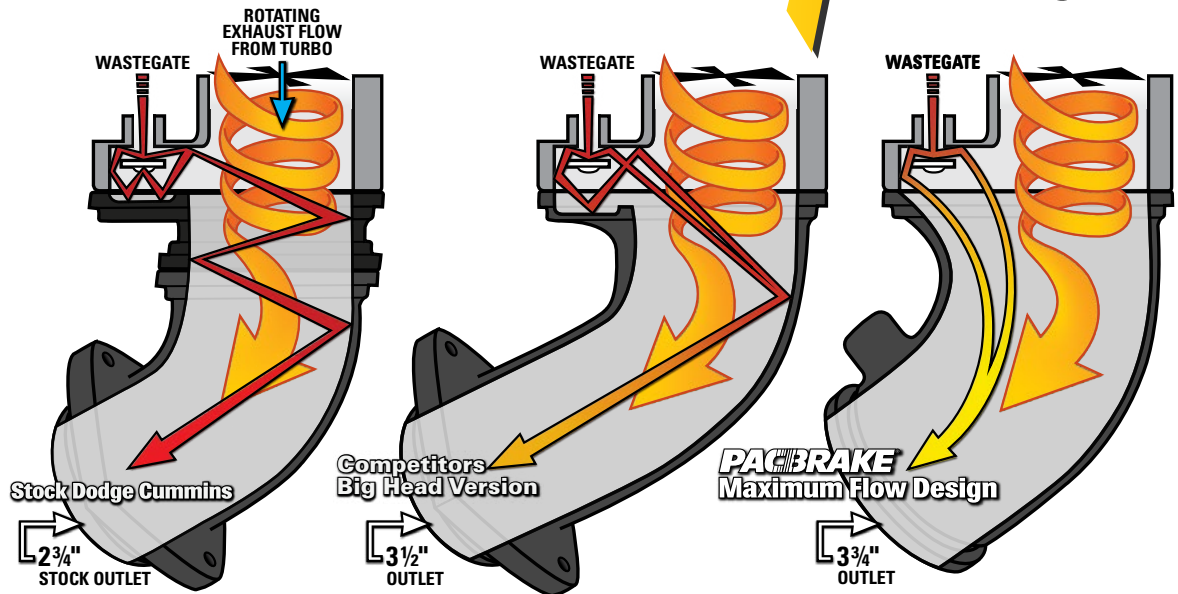
BENEFITS

- Gain horsepower, torque and fuel mileage
- Eliminate turbo lag
- Lower exhaust gas temperature

ADDITIONAL KIT INFO

- Full marmon 4" exhaust outlet
- Includes exhaust adapter, "V" clamp
- 12 point fasteners & flange gasket

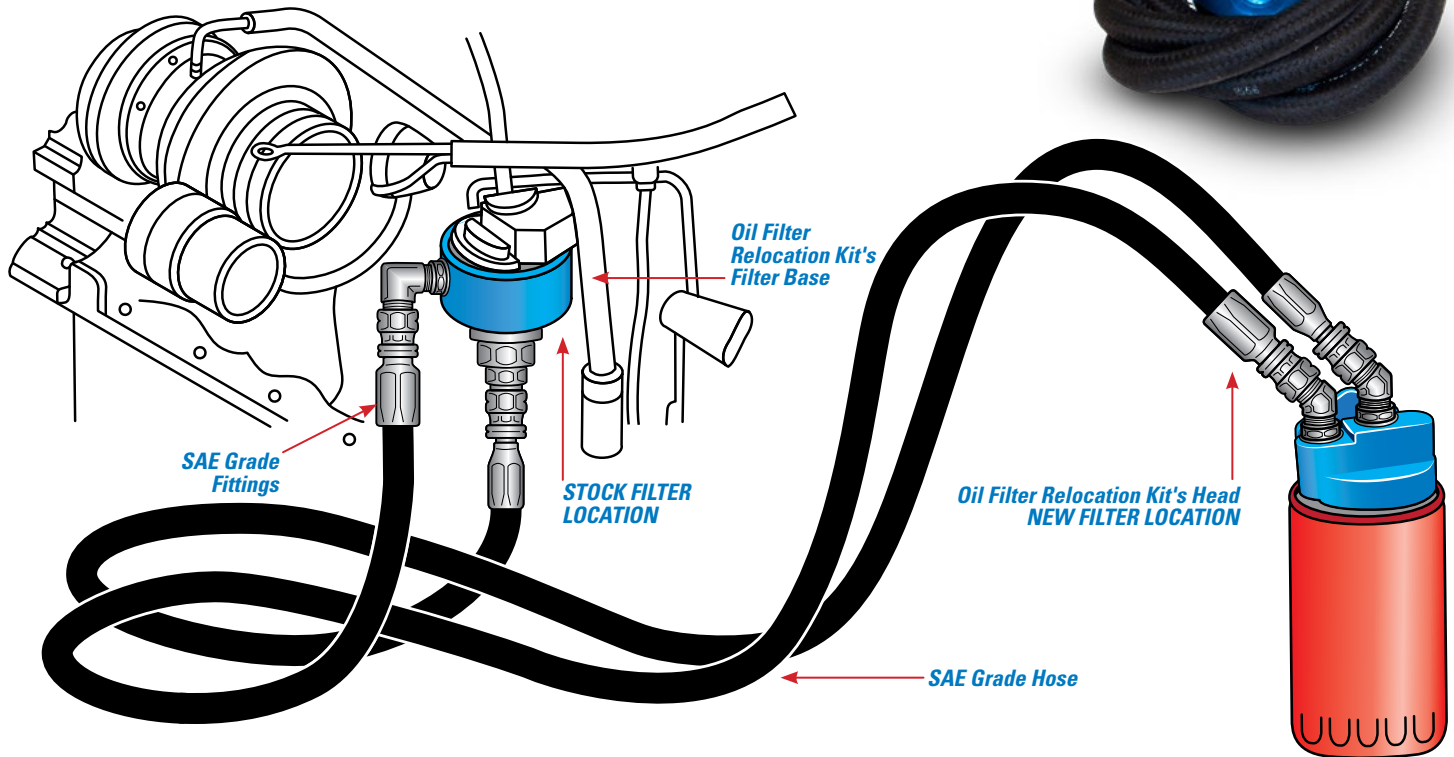
MAX FLOW



APPLICATION	YEAR	MODEL	KIT #
Max Flow Dodge Elbow			
Dodge	1994-2002	Ram Trucks (Equipped with Cummins & 4" Exhaust)	C44083

OIL FILTER RELOCATION KITS

Pacbrake oil filtration relocation kit provides easy access & serviceability to the engine's oil filter. An oil filter relocation kit is most beneficial for those who have twin turbos, as the installation of the second turbo denies access to the stock filter location. Pacbrake has designed this high quality filtration relocation kit using SAE grade hose, approved SAE fittings and CNC machined anodized aluminum filter head and base.



APPLICATION	YEAR	MODEL	KIT #
OIL FILTER RELOCATION KITS			
Dodge	1994-2002	RAM 5.9L Cummins Engines w/ Filter Thread of 1" X 16 UN	HP10006
Dodge	2003-2007	RAM 5.9L Cummins Engines w/ Filter Thread of 1" X 16 UN	HP10016
Dodge	2007½-2009	RAM 6.7L Cummins Engines* w/ Filter Thread of 1" X 16 UN	HP10016
RAM	2010-2018	RAM w/ Filter Thread of 1" X 16 UN	HP10305
RAM 1500	2009-2018	RAM 1500 w/ M22 X 1.5 mm Oil Filter Thread	HP10362
RAM 1500	2019+	RAM 1500 w/ M22 X 1.5 mm Oil Filter Thread	HP10363
RAM 2500/3500	2019+	RAM 2500/3500 w/ Filter Thread of 1" X 16 UN	HP10364
Universal		Universal Mounting Kit for Cummins Engines w/ Filter Thread of 1" X 16 UN	HP10007
Universal		Universal Mounting Kit for Cummins Engines w/ Filter Thread of M27-2.0 (Metric)	HP10125
Universal		Universal Mounting Kit for Cummins Engines w/ Filter Thread of 1 1/8" x 16 UN	HP10174

* Inner fender well must be modified to provide filter clearance

EXHAUST & ENGINE BRAKES

PACBRAKE'S HEAVY DUTY BRAKING FOR HEAVY DUTY HAULING

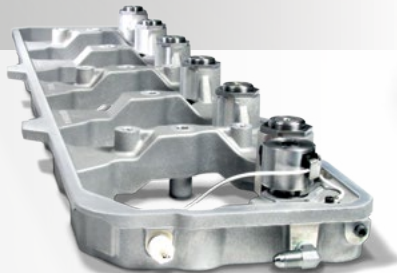
*Tow With **Confidence**
Brake With **Authority***



With today's trucks capable of towing/hauling over 30,000 lbs, additional control & stopping power has never been more necessary. Pacbrake engine and exhaust brakes are unmatched in braking performance.



EXHAUST BRAKES



LOADLEASH



ENGINE BRAKES



REPLACEMENT PARTS



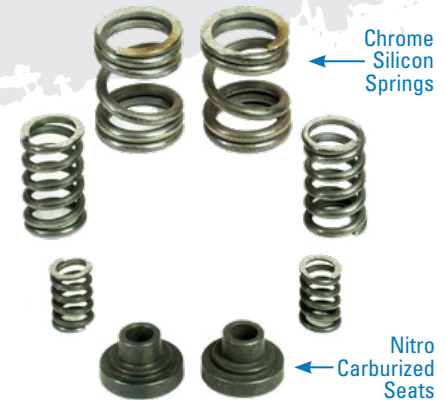
ISO 9001
QMI-SAI Global

SPRING KITS

Pacbrake offers a wide variety of spring kits for all applications of 6BT & 4BT Cummins engines. Whether you are installing an exhaust brake or governor spring kits, we have the kit for you.

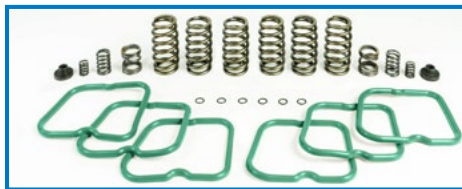
Heavy duty valve springs are Cummins OEM 3916691 white strip springs. The 60lbs spring is required for exhaust brake applications and is suggested for all governor spring installs.

Governor spring kits allow the Bosch P7100 to spin the engine RPM up to 4000 RPM. Each kit comes complete with parts for either 3000 or 4000 RPM. Pacbrake's governor spring kits are recommended for vehicles that have 5 speed standard transmissions. They are perfect for those who tow heavy loads and want more responsive power.



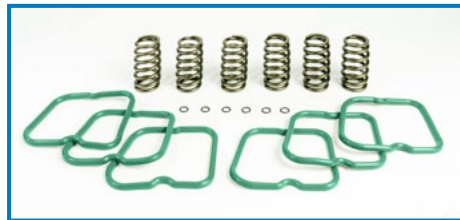
PREMIUM KIT | HP10244*

6 HD VALVE SPRING WITH 6 VALVE COVER GASKETS, 6 HOLD DOWN BOLT SEALS & GOVERNOR SPRING KIT.



BASIC KIT | HP10241

6 HD VALVE SPRING WITH 6 VALVE COVER GASKETS AND 6 HOLD DOWN BOLT SEALS.



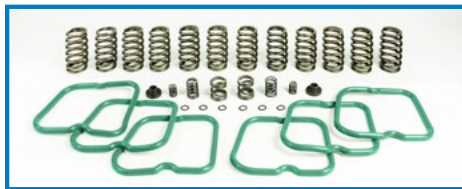
SPRING KIT | HP10246*

6 HD VALVE SPRINGS & GOVERNOR SPRING KIT.



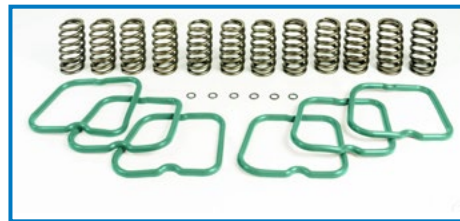
PREMIUM KIT | HP10243*

12 HD VALVE SPRING WITH 6 VALVE COVER GASKETS, 6 HOLD DOWN BOLT SEALS & GOVERNOR SPRING KIT.



BASIC KIT | HP10240

12 HD VALVE SPRING WITH 6 VALVE COVER GASKETS AND 6 HOLD DOWN BOLT SEALS.



SPRING KIT | HP10245*

12 HD VALVE SPRINGS & GOVERNOR SPRING KIT.



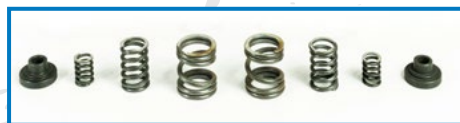
GASKETS KIT | HP10242

6 VALVE COVER GASKETS, 6 HOLD DOWN BOLT SEALS.



GOVERNOR SPRING KIT | HP10029*

GOVERNOR SPRING KIT.



* PLEASE NOTE: THIS KIT IS NOT LEGAL FOR SALE OR USE IN CALIFORNIA. This kit may not meet emission standards for your area. Check your local regulations prior to installing.

APPLICATION	YEAR	MODEL	KIT #
Governor Springs			
Dodge Ram (2500/3500)	1994-1998	Cummins 12 Valve Engine with a P7100 Injection Pump	HP10029
Heavy Duty Valve Springs/Gasket Kits			
Dodge Ram	1988-1998	Cummins 12 Valve Engine	HP10040 – HP10242
Dodge Ram	1994-1998	Cummins 12 Valve Engine with a P7100 Injection Pump	HP10043 – HP10246

SWITCHES

Increase accessory control with the flick of a switch.

SWITCH-PAC

TRANSMISSION SHIFT-LEVER MOUNTED ON/OFF SWITCH.

The Pacbrake Switch-Pac is a shifter-mounted switch, perfect for air horns, auxiliary lights & almost anything else you wish to control. It is available in momentary or latching & eliminates the need to drill a hole in the vehicles dash.

The sleek black finish matches the factory transmission gear lever and suits all interior colors. The convenient fingertip control location provides easy access for accessory activation. Kits are available in lighted, non-lighted latching switches & non-lighted momentary switch versions. Switch brackets are available to fit 3/4" and 5/8" transmission shift-levers & 2003 + Dodge Ram Automatic transmission shifter-levers.



SWITCHES	3/4" SHIFTER KIT #	5/8" SHIFTER KIT #	DODGE AUTO SHIFTER KIT #
Pacbrake Switch-Pac Kits			
<i>Momentary</i>	C10126	C10128	C10129
<i>Non-Lighted</i>	C10127	C18042	C10135
<i>Lighted</i>	C18040	C18041	C10136

PACBRAKE FOOT SWITCH | C11745

UNIVERSAL APPLICATIONS.

The convenient floor-mounted momentary ON/OFF switch provides easy access for a multitude of applications including exhaust brake activation and air horn switch.



APPLICATION	KIT #
Pacbrake Foot Switch Kit	
<i>Universal</i>	C11745

4WD 2 WHEEL LOW KIT | C18056

FOR MANEUVERING A TRUCK (AND A TRAILER) IN TIGHT, UPHILL CONDITIONS.

The 4WD 2 Wheel Low kit allows the operator to engage the transfer case into 4WD low range without engaging the front wheel drive. Hit the dash activation switch to provide an extra low gear for backing up, which eliminates any front and rear wheel hop.



THIS KIT CONTAINS:

- Nylon tubing
- Brass fittings
- Plated hardware
- 12VDC 3-way vacuum solenoid



APPLICATION	YEAR	MODEL	KIT #
4WD 2 Wheel Low Kit			
Dodge	1994-2002	Ram Trucks	C18056

PERFORMANCE OVERRIDE KIT | C18053

BE ABLE TO OVERRIDE THE POWER OF YOUR VEHICLE WITH THE FLICK OF A SWITCH.

This kit has the ability to cut your engine's horsepower by approximately 1/2, by preventing full fuel flow to the injectors. This switch is designed for situations when you don't want the vehicle operator to experience the full power of the engine.



THIS KIT CONTAINS:

- Nylon tubing
- 12VDC 3-way solenoid
- Brass fittings
- Zinc plated drill screws



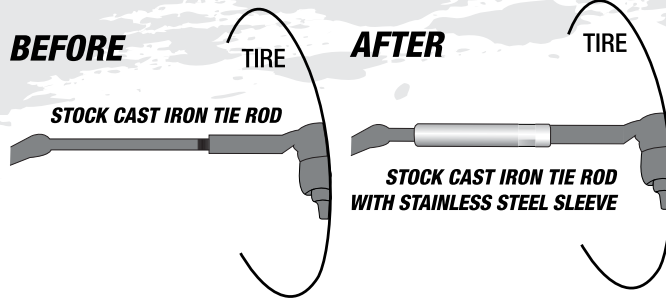
APPLICATION	YEAR	MODEL	KIT #
Performance Override Kit			
Dodge	1994-1998	Dodge Ram Diesel Trucks with a Bosch P7100 Injection Pump	C18053

TIE ROD SLEEVES

Increase your vehicle's performance with reinforced tie rods.

TIE ROD SLEEVES | HP10025

For safety and security, Pacbrake stainless steel tie rod sleeves reinforce the stock cast iron tie rods to prevent them from bending and ultimately breaking. This kit is recommended for those who go off-roading, but many may be interested in this inexpensive kit to ensure the safety of their vehicle and passengers.



FEATURES/BENEFITS:

- 303 Stainless Steel
- Easy installation
- CNC machined parts
- Maintains front end alignment
- Strengthens stock tie rods

APPLICATION	YEAR	MODEL	KIT #
Tie Rod Sleeves			
Chevrolet/GMC	1999-2006	Full Size Trucks (Including SUV & Hummer)	HP10025
Chevrolet/GMC	1999-2008	2500HD, 3500 (Tie Rod must be M14 x 1.5 Thread)	HP10025