

SOUNDSTREAM

2016

SPEAKERS

SOURCE UNITS

SUBWOOFERS

AMPLIFIERS

MOTOR SPORTS

ATVs

THE ULTIMATE
LISTENING
EXPERIENCE

35
SINCE 1981
YEARS
Anniversary

Tarantula Nano

We're in a time where small is "in". Smaller, more economical vehicles are more and more desirable. But that doesn't mean you have to sacrifice big power for your system. The new Tarantula NANO amplifiers pack huge amounts of power into small chassis thanks to efficient Full-Range Class D topology and SMT technology. Complimented with every possible preamp adjustment, the NANO amplifiers leave nothing to be desired...



- Class D Full Range SMT Circuitry
- Double Sided Composite Epoxy PCB
- 2-Ohm Stereo, 4-Ohm Bridged Multi-Channel
- 1-Ohm Stable Class D Monoblock
- Three-Way Protection Circuitry
- Delayed On/Off Circuit
- Tri-Mode Capable (2/4/5 ch. models)
- Variable 12dB High, Low, & Subsonic Crossovers
- Band-Pass Crossovers (4ch & 5ch.)
- Input Source Selector (4ch. & 5ch.)
- Variable 12dB 50Hz Bass Boost (1ch.)
- Dash Mounted Remote Gain Control (5ch. & 1 ch.)
- Direct Wire 8ga. Power & Speaker Terminals
- 0ga Reducer Terminal Included

TARANTULA NANO	TN2.600D	TN4.900D	TN5.950D	TN1.1200D
Max Power	1,200w	1,800w	1,900w	2,400w
RMS Power 4Ω	200 x 2	150 x 4	85 x 4 + 270 x 1	660 x 1
RMS Power 2Ω	300 x 2	225 x 4	130 x 4 + 430 x 1	1,050 x 1
RMS Power 4Ω Bridged	600 x 1	450 x 2	260 x 2 + 430 x 1	1,200 x 1 (1Ω)
Remote Gain Control	-	-	Included	Included
Dimensions (6.625"w x 1.75"h)	6.825"	8.875"	12.625"	12.625"



Tarantula Electro

Tarantula amplifiers continue to dominate the Soundstream amplifier arsenal. For the newest generation, we've maintained their stable performance, but given them a unique appearance. Each Tarantula Electro amplifier features a 12-point RGB LED lighting system, containing its own independent RGB control. A simple press of the end panel mounted switch changes the color to one of several presets, slow-motion color change, or rapid flashing random color. For more custom installs, a single color can be selected during slow-motion color change. Tarantula Electro models include 4ch, 1-ohm stable class D 5ch & monoblocks, and an additional .5-ohm stable 3,000w monoblock.



- 2-ohm Stereo & 4-ohm Bridged Full Range Operation
- 1-ohm Minimum Impedance Monoblock Operation
- Bridge 2 Monoblocks Together for Double Power!
- Multi-color RGB LED Illumination Accent Lighting
- Solid Color, Flashing, Random, or Slow-Motion Color Change
- MOSFET Power Supply w/ Audiophile Grade IR™ Transistors
- Military Grade SMT PCB Maintains Dynamic Performance
- Direct Short, Thermal, & Overload Circuits Protect Amplifier
- 200mV-6V High Level or Low Level RCA Input & Output
- Variable 12dB High Pass, Low Pass, & Subsonic Crossovers
- 12dB Bass Boost Increases Low Octave Harmonics (monoblock)
- 180° Phase Shift Improves Low Octave Dynamics (monoblock)
- Dash Mount Gain Control Module Included (select models)



12-point RGB LED lighting system

TARANTULA ELECTRO	T4.1500L	T5.2500DL	T1.4000DL	T1.6000DL
Max Power	1,500w	2,500w	4,000w	6,000w
RMS Power 4Ω	120 x 4	75 x 4 + 325 x 1	700 x 1	800 x 1
RMS Power 2Ω	180 x 4	125 x 4 + 500 x 1	1,300w	1,400 x 1
RMS Power 4Ω Bridged	360 x 2	250 x 2 + 750 x 1 (1Ω)	-	2,500 x 1 (1Ω)
RMS Power 1Ω Bridged	-	-	2,000w	3,000 x 1 (.5Ω)
Remote Gain Control	-	-	Included	Included
Dimensions (9"w x 2.50"H)	16.00"	17.25"	18.00"	20.50"



Rubicon NANO

AMPLIFIERS

For 2016, Rubicon amplifiers are all new. We adopted the optimum class D performance, reliability, and footprint of the Picasso Nano platform and present to you Rubicon Nano. At first glance, you'll notice several key improvements. Rubicon Nano's signal inputs, power/ground, and speaker connections are all re-located to the leading edge of the chassis, for an easier, more appealing install. All pre-amp & crossover options are conveniently located on the top surface, making adjustment after installation possible. What you might not notice are additions to the circuit board, including increased power supply & output stage components, & monoblock bridging capability. 2016 Rubicon Nano models include a 4ch, 5ch, & class D monoblocks up to 2,500 watts.



High Efficiency Class D Full Range & Monoblock Amplifiers
Hybrid Aluminum Alloy Heatsink for Optimum Dissipation
2-ohm Stereo & 4-ohm Bridged Class D Full Range
1-ohm Minimum Impedance Monoblock Operation
Monoblock Bridging Capability for Double Amplifier Application
MOSFET Power Supply w/ Audiophile Grade IR™ Transistors
Military Grade SMT PCB Maintains Dynamic Performance
Direct Short, Thermal, & Overload Circuits Protect Amplifier
200mV-6V Low Level RCA or High Level Signal Input
Quick Disconnect High Level Wire Harness Included

Easy DIY Install Single Sided Terminals & Controls
4g Power Input Terminals & 12g Speaker Output Terminals
Variable 12dB High Pass, Low Pass, & Subsonic Crossovers
12dB Bass Boost Increases Low Octave Harmonics
Dash Mount Gain Control Module Included (monoblocks)

Rubicon Nano	RN4.1400D	RN5.2000D	RN1.2000D	RN1.3000D	RN1.5000D
Max Power	1,400w	2,000w	2,000w	3,000w	5,000w
RMS Power 4Ω	125 x 4	75 x 4 + 300 x 1	400 x 1	600 x 1	1,000 x 1
RMS Power 2Ω	175 x 4	125 x 4 + 500 x 1	600 x 1	900 x 1	1,500 x 1
RMS Power 4Ω Bridged	350 x 2	250 x 2 + 500 x 1 (2Ω)	1,000 x 1 (1Ω)	1,500 x 1 (1Ω)	2,500 x 1 (1Ω)
Remote Gain Control	-	Included	Included	Included	Included
Dimensions: (6.50" w x 1.50"h)	9.00"	11.75"	9.00"	10.25"	13.75"

AMPLIFIERS

Don't let these little monsters fool you. The latest and greatest of class D full range technology allows us to pack 10 lbs of KICK YOUR ASS in less than 2 lbs chassis. Once regarded as "dirty power", class Ds stable performance, thanks to high power capability, maximum efficiencies, and low tolerance components, rivals traditional full range applications. Minimal power requirements, ultra micro footprint, unbelievable sound quality, and easy install make Stealth amplifiers great for any car, motorcycle, boat, or off-road vehicle...

Newest addition to the Stealth series amplifiers is a 500w 4ch model with built-in Bluetooth V3.0. Seamlessly connect your cell phone or other enabled smart device for continuous audio playback at your fingertips. A great addition to off-road vehicles, motorcycles, or personal watercraft without a source unit.



High Efficiency Class D Full Range & Monoblock Amplifiers
Hybrid Aluminum Alloy Heatsink for Optimum Dissipation
2-ohm Stereo & 4-ohm Bridged Full Range Operation
2-ohm Minimum Impedance Monoblock Operation
Built-in Bluetooth V3.0 for Wireless Mobile Device Playback*
MOSFET Power Supply w/ Audiophile Grade IRTM Transistors
Military Grade SMT PCB Maintains Dynamic Performance
Direct Short, Thermal, & Overload Circuits Protect Amplifier
200mV-12V High Level or Low Level RCA Input
Quick Disconnect RCA/High Level Wire Harness
Quick Disconnect Power and Speaker Output Harness
Variable 12dB High Pass, Low Pass, & Subsonic Crossovers
12dB Bass Boost Increases Low Octave Harmonics (ST1)
Dash Mount Gain Control Module Included (ST1)

95%+ Efficient
Class D Full Range
Only 3" x 6" !
Install-Me-Anywhere
Micro Footprint

Stealth Amplifiers	ST4.1000D	ST4.1000DB	ST1.700D
MAX Power	1000w	1000w	700w
RMS Power 4Ω	90 x 4	90 x 4	250 x 1
RMS Power 2Ω	125 x 4	125 x 4	350 x 1
RMS Power 4Ω Bridged	250 x 2	250 x 2	-
Remote Gain Control	-	-	Included
Dimensions (3"w x 1.5"h)	6.50"	7.75"	6.50"



NEW

Picasso Nano

AMPLIFIERS

Cars come in all different shapes, most in the same size; compact. So, we've engineered these mini Picassos to fit in virtually any location in your ride. Other sport compact amplifiers use bizarre technologies with pseudo power supplies. Picasso Nanos use tried and tested MOSFET power supplies & tenacious Class D circuitry.

Newest additions to the Picasso Nano series include a 1,000w 4ch, and 1-ohm stable 1,000w class D monoblock.



Small Compact 4.75" Wide Chassis
 4-ohm Bridged/2-ohm Stereo Class D Full Range
 2-ohm Stable Class D Monoblocks
 1-Ohm Stable Class D Monoblock Available
 MOSFET PWM Power Supply
 80Hz 12dB HP or LP Crossover (2/4 ch.)
 50-250Hz Variable 12dB LP Crossover (mono)
 10-50Hz Variable 12dB Subsonic Crossover (mono)
 12dB 45Hz Bass Boost (mono)
 200mv-6V Low Level Input Sensitivity
 High Level Input
 Dash Mount Remote Gain Control

PICASSO NANO	PN2.350D	PN4.520D	PN4.1000D	PN5.640D	PN1.650D	PN1.1000D
RMS Power 4Ω	115 x 2	100 x 4	140 x 4	60 x 4 + 200 x 1	400 x 1	350 x 1
RMS Power 2Ω	175 x 2	130 x 4	250 x 4	80 x 4 + 350 x 1	650 x 1	600 x 1
RMS Power 4Ω Bridged	350 x 1	260 x 2	500 x 2	160 x 2 + 350 x 1	-	1,000 x 1 (1Ω)
Remote Gain Control	-	-	-	Included	Included	Included
Dimensions (4.75"w x 1.5"h)	5.50"	9.25"	10.25"	10.25"	9.25"	10.25"

Picasso

AMPLIFIERS

New for 2016, Picasso amplifiers are the next step in performance and value. Taking advantage of our tried and true class A/B full range and improved efficiency class d monoblock platforms, Picasso amplifiers continue down the road of reliability and longevity you know well.



Class A/B Full Range & Class D Monoblock Amplifier
 2-ohm Stereo & 4-ohm Bridged Full Range Operation
 1-ohm Stable Class D Monoblock Operation
 Strap 2 Like-Monoblocks Together for Double Power!
 Military Grade PCB w/ PWM MOSFET Power Supply
 Direct Short, Thermal, & Overload Circuits Protect Amplifier
 High Level Input w/ Signal Sense Auto Turn-on
 200mV-6V Low Level RCA Audio Inputs
 Variable 12dB High Pass, Low Pass, & Subsonic Crossovers
 12dB Bass Boost Increases Low Octave Harmonics (select models)
 1800 Phase Shift Improves Low Frequency Dynamics (select models)
 Dash Mount Gain Control Module Included (select models)
 4g Power/Ground Terminals, 8g Speaker Terminals
 0G Power/Ground Terminals (select models)

NEW

PICASSO AMPLIFIERS	PA4.700	PA4.1000	PA5.1600	PA1.3500D	PA1.5000D	PA1.6000D
RMS Power 4Ω	45 x 4	70 x 4	70 x 4 + 180 x 1	750 x 1	1,100 x 1	1,400 x 1
RMS Power 2Ω	85 x 2	125 x 4	125 x 4 + 300 x 1	1,100 x 1	1,750 x 1	2,000 x 1
RMS Power 4Ω Bridged	175 x 2	250 x 2	250 x 2 + 300 x 1	1,750 x 1 (1Ω)	2,500 x 1 (1Ω)	3,000 x 1 (1Ω)
Remote Gain Control	-	-	Included	Included	Included	Included
Dimensions (7.75"w x 2.25"h)	11.75"	12.75"	17.75"	16"	21.25"	23.25"



Got an oscilloscope? Probably not... How about an ammeter? Doubtful too... But everybody has or can easily get an adequate Digital Volt Meter for \$20 or so. Many people think they have power from their amps equal to the rating. Very rarely! Seasoned competitors know how to tune their system with a DVM. But they do not measure Wattage, but rather AC Voltage. The new X3 amps are based off of voltage for tuning convenience. The included chart will tell you exactly how much power you can get from the amplifiers at 12V, 14.4V and 16V, and at 1, 2, and 4 ohms, and even at 1%, 5% and 10% THD! If you are not getting what the chart says you should, you know for a fact that you do not have sufficient power supply in the form of batteries. Or maybe you have a lot higher impedance or enclosure impedance rise than you suspected. Either way, you will know how much power you are getting out of your X3 amplifier and can take the step needed to use the X3 amps to their winning potential. It is that simple...



X3 AMPLIFIERS	X3.2K4	X3.71	X3.14K
RMS Power 4Ω, 14.4V, 1% THD	250 x 4	1,750 x 1	-
RMS Power 2Ω, 14.4V, 1% THD	400 x 4	3,240 x 1	7,600
RMS Power 1Ω, 14.4V, 1% THD	600 x 4	4,450 x 1	10,940
RMS Power 4Ω, 16V, 10% THD	-	2,010 x 1	-
RMS Power 2Ω, 16V, 10% THD	-	3,780 x 1	8,350
RMS Power 1Ω, 16V, 10% THD	-	5,180 x 1	14,300
Remote Gain Control	Included	Included	Included
Dimensions (11.5" w x 2.5" h)	15.75"	23.75"	36.25"

1-Ohm Stable Class D Competition Amplifiers
 Non-regulated MOSFET Power Supply
 Up to 16V Power & 10V Audio Input
 0ga Input & 8ga Output Terminals
 4ch. Bridgeable w/ 2-Ohm, 1-Ohm Stereo
 Monoblocks Strapable w/ 2Ω Load
 12dB High/Low Pass Crossovers (4ch)
 18dB Low-Pass & Subsonic Crossovers (mono)
 Variable 18dB 45Hz Bass Boost
 180° Phase Control (mono)
 Remote Gain Control (mono)



Amplifier Installation

Complete D.I.Y. Installation Kits

WKIT-0
 0AWG Installation Kit w/ 200A ANL Fuse

WKIT-4
 4AWG Installation Kit w/ 120A MANL Fuse

WKIT-8
 8AWG Installation Kit w/ 80A MANL Fuse

All Installation Kits Include:

- 17ft Power Wire
- 3ft Ground Wire
- 25ft Speaker Wire
- 17ft Twisted Pair RCA Interconnect
- 17ft Remote Turn-on Wire
- MANL or ANL Fuse Holder w/ Fuse
- Complete Installation Accessories



Power Management

SCX-1.5
 1.5 Farad Power Capacitor

- 12-16 DC Input Voltage
- Red LED Voltage Meter
- Bolt Post for Ring Terminal



SCX-4
 4 Farad Power Capacitor

- 12-16 DC Input Voltage
- Blue LED Voltage Display
- Chrome Plated Chassis
- Bolt Post for Ring Terminal



USB-8A
 8" Pre-loaded Under Seat Enclosure w/ Amplifier

- 150w Amplifier Built-in
- 200mV-3V Input Sensitivity
- Variable 12dB 50-150Hz LP Crossover
- Variable 12dB 45Hz Bass Boost
- 180° Phase Switch
- >95dB Signal-to-Noise Ratio
- 0.05% Total Harmonic Distortion
- Remote Gain Control Included
- Dimensions: 3"h x 9.5"w x 14.5L



Tarantula SUBWOOFERS

In recent years, Tarantula subwoofers have evolved to meet various performance and placement goals, keeping you, the Soundstream fanatic, suggestions in mind. However, more often than not, we hear your calls to bring back a legend. For 2015, we're proud to re-introduce the old favorite, Tarantula T5. For this next generation, we made a few changes and several improvements.

Improvements include direct connect wire leads, over saturated 12mm top plate and t-yoke, & double-stitched cone to high density poly-ether foam surround for improved sound quality. Key components that you expect from T5 still remain; big ass 1,000w 3" voice coil, tripple-stack magnet structure, high density Spruce pulp sub-cone, and the iconic black-on-black Soundstream spider.



- Overcompensating Motor Structure for Increased Magnetic Strength
- 12mm T-Yoke & Top Plate Improve Low Frequency Dynamics
- Vented T-Yoke & Frame Reduces Voice Coil Heat Build-up
- Non-Magnetic Non-Resonate Die-Cast Aluminum Frame
- 3" 4-Layer Voice Coil w/ Direct Connect Wire Increases Power Handling
- High-Temperature Tolerance Adhesives Resist Thermal Failure
- Non-Transfer Spruce Pulp Cone w/ UV & Chemical Protection
- Stitched and Glued Surround/Cone Joints for Strongest Bonding
- Extended Excursion Poly-ether Foam Surround w/ UV & Chemical Protection
- Dual Poly-Cotton Suspension Dampen Violent Accelerations
- 1-pc Gasket/Trim Ring w/ Concealed Mounting Holes Included

TARANTULA T5	T5.122	T5.152
MAX Power (watts)	2,000	2,600
RMS Power (watts)	1,000	1,300
Efficiency (1w/1m dB)	86dB	88dB
Voice Coil Configuration	3" DVC 2Ω	3" DVC 2Ω
Mounting Depth	7.25"	9.25"
Optimum Sealed Box	1.50	2.00
Optimum Ported Box	2.50	4.00

Re-cone Kit
Available

Reference

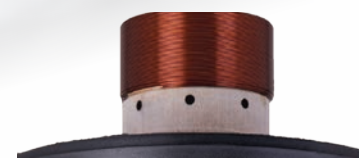


Woven Fiberglass Composite Cone

All Reference R3 woofers use fiberglass stranding woven together for ultimate strength and less elasticity. A heavy soaking in epoxy combined with the sonic qualities of pulp paper backing proves itself worthy of any system.

Extended Excursion Polyurethane Surround

Polyurethane is a foam compound used in the manufacture of countless gasket and insulation products, known for its adhesive bonding properties. Reference R3 woofers utilize an extended excursion polyurethane surround for its strength and flexible properties during extreme movement.



100% OFC 4-Layer Voice Coil

R3 woofers use generous 1.50" long, 2.5" diameter 100% OFC Copper voice coils. A vented Aluminum former extracts and dissipates any heat build-up, resulting in improved power handling.



Back Plate & T-Yoke Venting

Heat build-up is a leading cause of catastrophic woofer failure. Venting built into the T-Yoke, back plate, and voice coil extract and dissipate heat, ensuring R3 woofers keep their cool.

REFERENCE R3	R3.8	R3.10	R3.12	R3.15
MAX Power (watts)	1,000	1,400	1,600	1,800
RMS Power (watts)	500	700	800	900
Efficiency (1w/1m)	80.70	82.10	84.66	90.20
Voice Coil Configuration	2.00" DVC 2Ω	2.5" DVC 2Ω	2.5" DVC 2Ω	2.5" DVC 2Ω
Mounting Depth	5.25"	6.00"	6.875"	7.625"
Optimum Sealed ft ³	0.75	1.00	1.50	2.75
Optimum Ported ft ³	1.25	1.50	2.25	2.75

SUBWOOFERS

STEALTH 124

An addition to the Stealth family, this shallow mount 12" subwoofer yields the performance of most conventional 12" subwoofers, but needs only 3" for mounting. Consider Stealth-12 optimum for pre-fab under seat and behind rear seat shallow enclosures.

Aerated Paper Cone for Dynamic, Natural Sound Quality
Semi-Circular Frame Venting Maintains Thermal Control
Internal Motor Assembly Reduces Mounting Depth
3" Mounting Depth to Install in Any Vehicle Type
2" 4-ohm DVC for Multiple Woofer Application



STEALTH-124	
MAX Power (watts)	700
RMS Power (watts)	350
Efficiency (1w/1m dB)	86dB
Voice Coil Configuration	2" DVC 4Ω
Mounting Depth	3"
Optimum Sealed Box	1.00
Optimum Ported Box	2.00

SUBWOOFERS

STEALTH 13

Simply put, this woofer is the shallowest woofer on the market. It is a full 13.25" subwoofer that can play not only in a tiny .5 cubic foot enclosure, but without losing low bass extension. Perfect for applications in doors, under seats, foot wells, & trucks.

Low Bass In No Space!

Proprietary Cast Aluminum Basket
Inverted Motor Assembly
Solid Aluminum Cone
2" Mounting Depth
5" Voice Coil
Semi-Circular Frame Venting



STEALTH-13	
MAX Power (watts)	400
RMS Power (watts)	200
Efficiency (1w/1m dB)	80.82
Voice Coil Configuration	5" SVC 4Ω
Mounting Depth	2"
Optimum Sealed Box	0.75
Optimum Ported Box	-

SUBWOOFERS

RUBICON

Injection Molded Polypropylene Cone
Overcast Stitched Cone
NBR Rubber Surround
2" DVC 4-Ohm Voice Coil
Embossed Dust Cap
Frame Voice Coil Venting
Vented T-Yoke & Back Plate

RUBICON SUBWOOFERS	RUB.104	RUB.124	RUB.154
MAX Power (watts)	900	1,000	1,100
RMS Power (watts)	450	500	550
Efficiency (1w/1m)	87.30	85.67	86.97
Voice Coil Configuration	2" DVC 4Ω	2" DVC 4Ω	2" DVC 4Ω
Mounting Depth	6.00"	6.625"	7.50"
Optimum Sealed ft ³	0.75	1.25	1.50
Optimum Ported ft ³	1.50	2.00	3.00



Picasso

Injection Molded Polypropylene Cone
Overcast Stitched Cone
NBR Rubber Surround
2" SVC or DVC 4-Ohm Voice Coil
Embossed Dust Cap
Frame Voice Coil Venting
Vented T-Yoke & Back Plate

PICASSO SUBWOOFERS	PCO.8	PCO.10	PCO.12D4
MAX Power (watts)	500	600	700
RMS Power (watts)	250	300	350
Efficiency (1w/1m)	87.49	86.40	88.41
Voice Coil Configuration	2" SVC 4Ω	2" SVC 4Ω	2" DVC 4Ω
Mounting Depth	4.00"	5.00"	6.00"
Optimum Sealed ft ³	0.50	0.75	1.00
Optimum Ported ft ³	1.00	1.50	1.75



Reference Components

When it comes to making a component speaker worth listening too, you have to think outside of the box. That's what we do at Soundstream, and that is exactly what we did for 2014. The RC.6 uses non-traditional driver material to be innovative but also sound amazing. Everyone knows paper sounds better, but we use an aerated paper cone for a lighter, stronger cone resulting in a very natural sound. The tweeter in this set uses a PST (puffed silk tweeter) this results in the strongest and lightest silk tweeter on the market without adding any weight, thus being more efficient.



TWEETER:
2.00" Machined Aluminum Housing
PST (Puffed Silk Tweeter Technology)
0.5" Mounting Depth

WOOFER:
6.5" Mid-woofer
APC (Aerated Paper Cone Technology)
Cast Aluminum Frame
Nickel Plated Spring Terminals
2.5" Mounting Depth

RC.6	
Size & Type	6.5" 2-way
MAX Power (watts)	400
RMS Power (watts)	200
System Efficiency	93db
Top Mount Depth	2.34"

Picasso Components

Improved Efficiency Diaphragm & Magnet Structure
Carbon Fiber Injection Molded Polypropylene Cone
Treated Woven Cloth Surround
Phase Plug Improved Dynamic Response
1" Voice Coil on Aluminum Former
4-ohm System Impedance
Quick Disconnect Terminals
1" Pivoting Soft Dome Tweeter
Flush or Surface Mounting
Passive Crossover Included
Freq-Response: 70-20kHz



PF.6	
Size & Type	6.5" 2-way
MAX Power (watts)	350
RMS Power (watts)	120
System Efficiency	93dB
Top Mount Depth	2.5"

ARACHNID Components

Improved Efficiency Diaphragm & Magnet Structure
Injection Molded Polypropylene Cone
Treated Woven Cloth Surround
Phase Plug Improved Dynamic Response
1" Voice Coil on Aluminum Former
4-ohm System Impedance
Quick Disconnect Terminals
1" Pivoting Balanced Dome Tweeter
Flush or Surface Mounting
Passive Crossover Included
Freq-Response: 70-20kHz



AC.6	
Size & Type	6.5" 2-way
MAX Power (watts)	300
RMS Power (watts)	100
System Efficiency	92dB
Top Mount Depth	2.50"

TARANTULA Full Range

Following the high fidelity qualities of the Reference RC-6 component set, we're proud to introduce the newest generation of SST coaxial speakers. Adopting similar materials and technology, these direct replacement speakers yield sonic qualities you'd expect only from Soundstream Reference series.

Painstakingly engineered, SST speakers feature our aerated paper cone material and puffed silk dome tweeter, creating the most dynamic sound quality possible. Seamless, phase coherent blending of the cone and tweeter give your music texture, presence and the airiness of a live performance. It's these harmonics that pull emotion and all your senses back to the listening experience.



SST.692

Aerated Paper Cone w/ Cone Stiffening Ribs
Acoustic Guide Tweeter w/ Phase Alignment
Phase Optimized 1" Puffed Silk Dome Tweeter
1" Aluminum Voice Coil
Quick Disconnect Terminals
Snap-In Grills Included

SST SPEAKERS	SST.652	SST.692
Size and Configuration	6.5" 2-way	6" x 9" 2-way
MAX Power (watts)	260w	360w
RMS Power (watts)	130w	180w
Efficiency (1w/1m dB)	88.5dB	90.9dB
Top Mount Depth	2.25"	3.00"



SST.652

Picasso Full Range



PF.693

PF.653

Improved Efficiency Diaphragm & Magnet Structure
Carbon Fiber Injection Molded Polypropylene Cone
Treated NBR Rubber Surround
1" Voice Coil on Aluminum Former
4-ohm System Impedance
Quick Disconnect Terminals
2" Balanced Dome Mylar Midrange (693)
1" Balanced Dome Mylar Tweeter

PICASSO SPEAKERS	PF.693	PF.653
Size and Configuration	6"x9" 3-way	6.5" 3-way
MAX Power (watts)	350w	250w
RMS Power (watts)	130w	90w
Efficiency (1w/1m dB)	94dB	93dB
Top Mount Depth	3.25"	2.25"

ARACHNID Full Range



AF.694



AF.653

NEW

Improved Efficiency Diaphragm & Magnet Structure
Injection Molded Polypropylene Cone
Treated Woven Cloth Surround
1" Voice Coil on Aluminum Former
4-ohm System Impedance
Quick Disconnect Terminals
2" Balanced Dome Mylar Midrange (694)
1" Balanced Dome Mylar Tweeter



AF.52



AF.573

AF.42

ARACHNID SPEAKERS	AF.694	AF.653	AF.573	AF.52	AF.42
Size and Configuration	6"x9" 4-way	6.5" 3-way	5"x7" 3-way	5.25" 2-way	4" 2-way
MAX Power (watts)	500	300	350	250	200
RMS Power (watts)	170	100	120	80	70
Efficiency (1w/1m dB)	93.00	92.00	92.00	90.00	90.00
Mounting Depth	3.25"	1.75"	2.625"	2.25"	1.75"

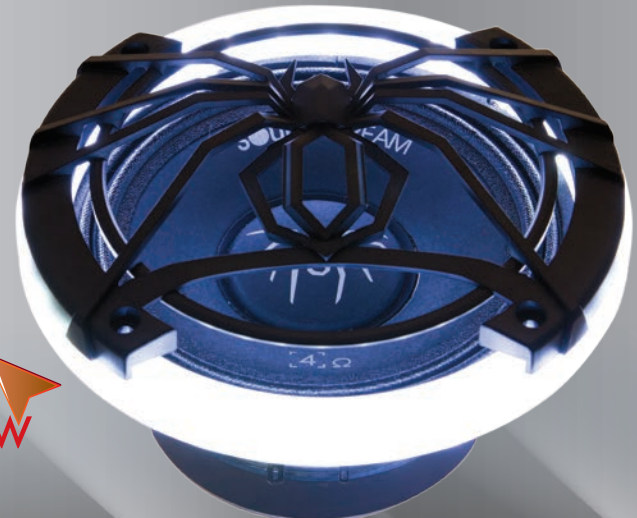


SME.654
SME.804

SME.694

SME.654P

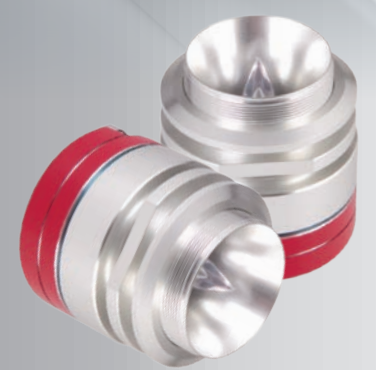
Pro Audio Midrange Drivers	SME.654	SM.654P	SME.694	SME.804
Size	6.5"	6.5"	6"x9"	8"
MAX Power Handling	170w	170w	185w	300w
Impedance	4-Ohm	4-Ohm	4-Ohm	4-Ohm
Frequency Response	150-10kHz	150-10kHz	120-8kHz	120-8kHz
Efficiency (1w/1m)	96dB	96dB	97dB	98dB
Mounting Depth	2.75"	2.75"	3.25"	3.25"



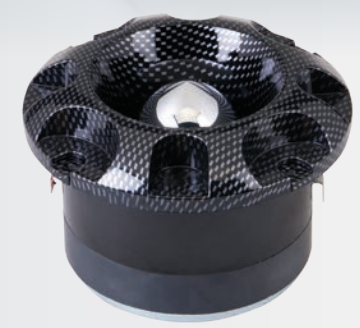
NEW

LED Speaker Rings

- LED-6W Pair (2) of 6.5" Bright White LED Speaker Rings
- LED-6RGB Pair (2) of 6.5" RGB LED Speaker Rings
- LED-8W Pair (2) of 8" Bright White LED Speaker Rings
- LED-8RGB Pair (2) of 8" RGB LED Speaker Rings



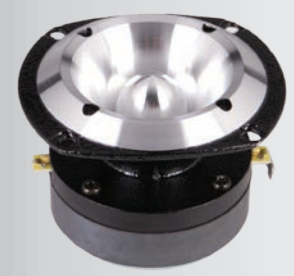
SST-05 (pair)



SST-20



SST-22



SPT-200



SPT-30



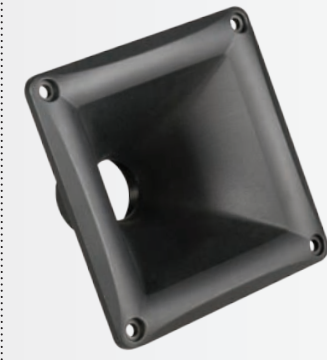
SPT-35



SCT.440



SCT.600



SPH.100



SPH.400

Tweeter Horns	SPH.100	SPH.400
Size & Type	1" Screw-on	2" Bolt-on
Material	ABS	Aluminum
Mounting Depth	2.75"	4.75"

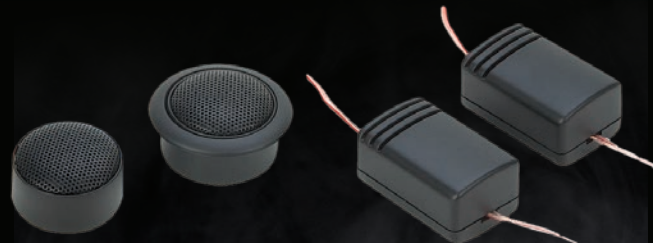
Pro Audio Tweeters	SST-05	SST-20	SST-22	SPT-30	SPT-35	SPT-200	SCT.440	SCT.600
MAX Power Handling	100w	90w	100w	100w	100w	70w	130w	240w
Diaphragm Size/Type	1" Aluminum	2" Aluminum	2" Aluminum	2" Composite	2" Composite	1" Aluminum	Titanium	Titanium
Impedance	4-Ohm	4-Ohm	4-Ohm	8-Ohm	4-Ohm	4-Ohm	8-Ohm	8-Ohm
Frequency Response	3kHz-20kHz	4kHz-20kHz	4kHz-20kHz	3kHz-20kHz	3kHz-20kHz	4kHz-20kHz	1.3kHz-20kHz	1kHz-20kHz
Efficiency (1w/1m)	109dB	105dB	107dB	105dB	107dB	103dB	107dB	108dB
Mounting Depth	1.5"-2"	2.25"	2.125"	2.25"	3.25"	2.25"	-	-

TWEETERS

TWS.1

1" Soft Dome Tweeter

Ferrofluid cooled
Neodymium magnet
Tri-Mounting - flush, surface or angle
12dB/Octave passive crossover included
Rated Input Power: 110W
Impedance: 4ohm
Freq. Resp. 3KHz - 20KHz
SPL 93dB



TWS.3N

1" PEI Dome Tweeter

Tri-Mounting - flush, surface or angle
Adjustable eyeball design
Built-in 12 dB In-Line Crossover
Rated Input Power: 110W
Impedance: 4 ohm
Freq. Resp. 2KHZ-21KHZ
SPL 94dB



TWS.4

1" Tantalum Dome Tweeter

Polished aluminum housing
Dual-Mounting - surface or angle
Built-in 12 dB In-Line Crossover
Rated Input Power: 110W
Impedance: 4 ohm
Freq. Resp. 5KHZ-25KHZ
SPL 95dB



TWT.5

1" PEI Dome Tweeter

Surface or Angled Mounting
12dB Passive Crossover Included
Rated Input Power: 110W
Impedance: 4 ohm
Freq. Resp. 2KHZ-21KHZ
SPL 97dB



Equalizers

MPQ-7B

1/2 DIN 7-Band Graphic EQ w/ Subwoofer Level Control

30V Bipolar Switching Power Supply
20dB Headroom Eliminated Signal Overload
2 Selectable Balanced RCA Inputs w/ Input gain
Front, Rear, & Subwoofer RCA Outputs
Seven Frequency Bands with +/- 18dB Boost/Cut
40Hz, 100Hz, 275Hz, 700Hz, 2kHz, 5kHz, 14kHz
Independent Subwoofer Level Control
Selectable Low-Pass Filter: 32Hz, 64Hz, 125Hz
Input Selector Switch
Fade Control
Blue Backlit Control Knobs
S/N Ratio: 115dB
THD: 0.05%
Stereo Separation: 82dB
Frequency Response: 10Hz-15kHz
Max Output Voltage: 8V



MPQ-7XO

1/2 DIN Dual Channel Multi-Band Graphic EQ

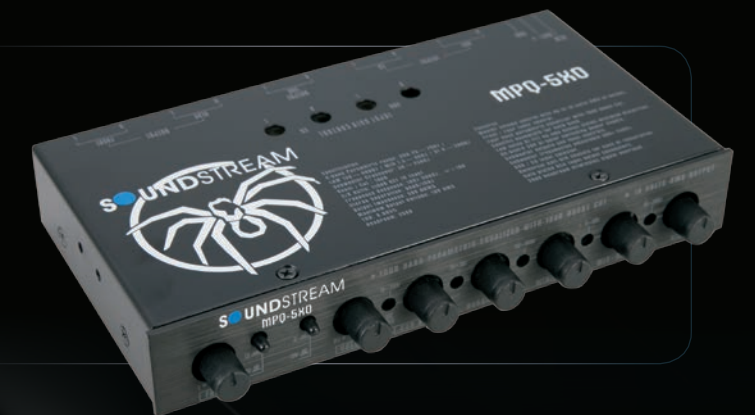
20dB Headroom Switching Power Supply
Built-in Low Noise Bi-FET Op-Amps
2 Selectable Balanced RCA Inputs w/ Input Gain
Front, Rear, & Subwoofer RCA Outputs
Four 18dB Front Bands 125Hz; 500Hz; 3.5kHz; 12kHz
Three 18dB Rear Bands 50Hz; 600Hz; 6.3kHz
Variable 18dB Bass Boost: 20-70Hz
Independent Subwoofer Level Control
Selectable Subsonic Filter: 32Hz; 64Hz; 125Hz
Fade Control
Blue Backlit Control Knobs
Frequency Response: 10-100kHz
Output Signal Voltage Up To 8V
THD: .05%
Signal-to-Noise Ratio: 115dB
7" w x 4.25" d x 1.125" h



MPQ-5XO

1/2 DIN 3-Band Parametric EQ w/ Subwoofer Level Control

20dB Headroom Switching Power Supply
Built-in Low Noise Bi-FET Op-Amps
2 Selectable Balanced RCA Inputs w/ Variable Input Gain
Front, Rear, & Subwoofer RCA Outputs
3 Variable Bandwidths: 18dB of Equalization
150-400Hz (Bass); 1.5-4kHz (Mid); 4-20kHz (High)
Variable 18dB Bass Boost: 20-70Hz
Independent Subwoofer Level Control
Variable Subsonic Filter: 50-250Hz
Fade Control
Blue Backlit Control Knobs
Frequency Response: 10-100kHz
Output Signal Voltage Up To 10V
THD: .005%
Signal-to-Noise Ratio: 110dB
7" w x 3.625" d x 1.125" h



Bass Processors

BX-22i Digital Bass Reconstruction Processor

High Tolerance SMD Technology
All Aluminum Chassis
Dash Mount Remote Control
PFM Subsonic Filter & Bass Level Control
Parametric Bass Equalizer
Variable Frequency Sweep
Variable Q Width
Variable PWM Subsonic Filter
Low Level RCA Input
Low Level RCA Output
Signal Sense Remote Turn-on
PWM High Head Room Power Supply
Frequency Response: 10Hz 100KHz
THD: 0.002%
S/N Ratio: 132dB
Balanced Input Noise Rejection: 60 dB
MAX Output Level: 13.5 volt



BX-20Z Digital Bass Reconstruction Processor

Max Bass Control
Dash Mount Remote Control
PFM Subsonic Filter & Bass Level Control
Illuminated logo and knobs
Chrome Logo Plate
Bass Restoration Lighted Display
Parametric Bass Control
PFM Subsonic Filter
Balanced Inputs
Bass Output Control
PWM High Head Room Power Supply
Output Level: 13.5 volt
Frequency Response: 10Hz 100KHz
THD: 0.002%
S/N Ratio: 132dB
Balanced Input Noise Rejection: 60 dB



BX-15 Digital Bass Reconstruction Processor

Max Bass Control
PWM High Head Room Power Supply
Balanced Input Noise Rejection: 60 dB
Frequency Response: 10Hz 100KHz
Dash Mount Remote Control
PFM Subsonic Filter & Bass Level Control
Illuminated logo and knobs
Brushed Aluminum Case & Handles
Bass Restoration Lighted Display
Parametric Bass Control
PFM Subsonic Filter
Balanced Inputs
Bass Output Control
Output Level: 13.5 volt
THD: 0.002%
S/N Ratio: 132dB



BX-12 (black) BX-12W (white) Digital Bass Reconstruction Processor

Max Bass Control
PWM High Head Room Power Supply
Frequency Response: 10Hz 100KHz
Dash Mount Remote Control
Bass Restoration Lighted Display
Parametric Bass Control
PFM Subsonic Filter
Balanced Inputs
Bass Output Control
Output Level: 13.5 volt
THD: 0.003%
S/N Ratio: 130dB
Balanced Input Noise Rejection: 60 dB



BX-10X Digital Bass Reconstruction Processor

Max Bass Control
PWM High Head Room Power Supply
Frequency Response: 10Hz 100KHz
Dash Mount Remote Control
Bass Restoration Lighted Display
Parametric Bass Control
PFM Subsonic Filter
Balanced Inputs
Bass Output Control
Output Level: 13.5 volt
THD: 0.003%
S/N Ratio: 130dB
Balanced Input Noise Rejection: 60 dB



BX-10 (black) BX-10W (white) Digital Bass Reconstruction Processor

Max Bass Control
PWM High Head Room Power Supply
Frequency Response: 10Hz 100KHz
Dash Mount Remote Control
Bass Restoration Lighted Display
Parametric Bass Control
PFM Subsonic Filter
Balanced Inputs
Bass Output Control
Output Level: 13.5 volt
THD: 0.003%
S/N Ratio: 130dB
Balanced Input Noise Rejection: 60 dB



WAKE TOWER SPEAKERS

WTS Wake Tower Speakers offer maximum performance in the open air environment of any boat or off-road vehicle. Considering extreme outdoor conditions, WTS systems use the best materials to defend potentially damaging effects of water and UV sunlight, and impact resistance. Additional options for WTS enclosures include bright white or RGB LED grill rings, and a rear mounted high intensity LED spot light. Each WTS enclosure is pre-wired for the optional LED rings and spot light, making future add-on simple.

Immediately available WTS sets include 6.5" & 8" coaxial, in brilliant gloss white and black. Available spring 2016 in time for the 2016 boat season, an additional 8" coaxial set will feature a high efficiency horn loaded compression tweeter and midrange driver. Whatever your application, WTS speaker systems are guaranteed to carry your tunes across any lake, river, or desert.

Enclosure Construction

WTS enclosure construction begins with Centrex, a material made in the USA, that offers incredible advantages to traditional polymer materials. Centrex is resilient to extreme temperatures, chemicals, & weathering, while maintaining impervious structural density. WTS enclosures resist harmful sunlight from deteriorating its brilliant coloring thanks to a UV inhibitor blended with the raw Centrex material.

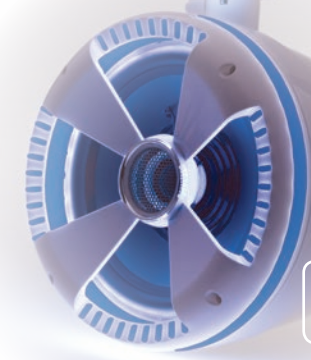
Following the concept of superior materials, WTS mounting clamps are cast aluminum, with adjustment to 2.5" diameter, and can rotate 3600. Included rubber inserts accommodate installation to most round or oval watercraft wake towers and off-road vehicle roll cages. All speaker, LED ring, and LED spot light pre-wire passes thru the mounting bracket center, keeping all wiring contained in a dry environment.

Speaker Characteristics

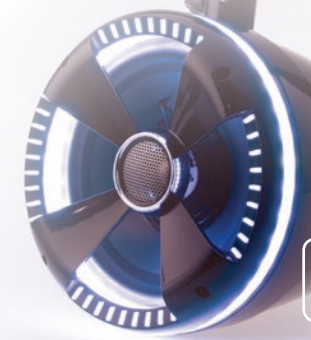
Coaxial speakers of WTS use waterproof materials, including blended polypropylene-mica cones, titanium dome tweeter, and rubber gaskets around the tweeter bridge. A neoprene gasket under the speaker frame prevents moisture from entering the enclosure, eliminating the possibility of electrical shorting. Color matching grills made of Centrex and a stainless steel mesh over the tweeter prevent harmful damage by rogue debris.

WTS-6W	Pair (2) of Gloss White 6.5" Wake Tower Speakers
WTS-6B	Pair (2) of Gloss Black 6.5" Wake Tower Speakers
WTS-8W	Pair (2) of Gloss White 8" Wake Tower Speakers
WTS-8B	Pair (2) of Gloss Black 8" Wake Tower Speakers
WTS-LED	Pair (2) of LED Spot Lights for WTS
LED-6W	Pair (2) of 6.5" Bright White LED Speaker Rings
LED-6RGB	Pair (2) of 6.5" RGB LED Speaker Rings
LED-8W	Pair (2) of 8" Bright White LED Speaker Rings
LED-8RGB	Pair (2) of 8" RGB LED Speaker Rings

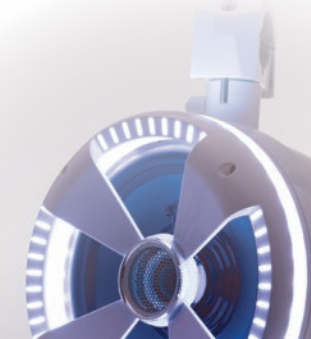
NEW



WTS-8RGB



WTS-8W



WTS-8W



WTS-LED

MARINE Amplifiers



STEALTH

95%+ Efficient
Class D Full Range
Only 3" x 6"!
Install-Me-Anywhere
Micro Footprint



Stealth Amplifiers	SM4.1000D	SM1.700D	ST4.1000DB
RMS Power 4Ω	90 x 4	250 x 1	90 x 4
RMS Power 2Ω	125 x 4	350 x 1	125 x 4
RMS Power 4Ω Bridged	250 x 2	-	250 x 2
MAX Power	1000w	700w	1000w
Remote Gain Control	-	Included	-
Dimensions (3"w x 1.5"h)	6.50"	6.50"	7.75"

High Efficiency Class D Full Range & Monoblock Amplifiers
Hybrid Aluminum Alloy Heatsink for Optimum Dissipation
2-ohm Stereo & 4-ohm Bridged Full Range Operation
2-ohm Minimum Impedance Monoblock Operation
Built-in Bluetooth V3.0 for Wireless Mobile Device Playback*
MOSFET Power Supply w/ Audiophile Grade IR™ Transistors
Military Grade SMT PCB Maintains Dynamic Performance
Splash Resistant Conformal Coated Circuit Boards
Direct Short, Thermal, & Overload Circuits Protect Amplifier
200mV-12V High Level or Low Level RCA Input
Quick Disconnect RCA/High Level Wire Harness
Quick Disconnect Power and Speaker Output Harness
Variable 12dB High Pass, Low Pass, & Subsonic Crossovers
12dB Bass Boost Increases Low Octave Harmonics (SM1)
Dash Mount Gain Control Module Included (SM1)

Rubicon NANO



NEW

Rubicon Nano	MR4.1400D	MR5.2000D	MR1.2000D
RMS Power 4Ω	125 x 4	75 x 4 + 300 x 1	400 x 1
RMS Power 2Ω	175 x 4	125 x 4 + 500 x 1	600 x 1
RMS Power 4Ω Bridged	350 x 2	250 x 2 + 500 x 1 (2Ω)	1,000 x 1 (1Ω)
Remote Gain Control	-	Included	Included
Dimensions: (6.50" w x 1.50"h)	9.00"	12.00"	10.00"

High Efficiency Class D Full Range Amplifiers
Hybrid Aluminum Alloy Heatsink for Optimum Dissipation
2-ohm Stereo & 4-ohm Bridged Class D Full Range
1-ohm Minimum Impedance Monoblock Operation
MOSFET Power Supply w/ Audiophile Grade IRTM Transistors
Military Grade SMT PCB Maintains Dynamic Performance
Splash Resistant Conformal Coated Circuit Boards
Direct Short, Thermal, & Overload Circuits Protect Amplifier
200mV-6V Low Level RCA or High Level Signal Input
Quick Disconnect High Level Wire Harness Included
Easy DIY Install Single Sided Terminals & Controls
4g Power Inout Terminals & 12g Speaker Output Terminals
Variable 12dB High Pass, Low Pass, & Subsonic Crossovers
12dB Bass Boost Increases Low Octave Harmonics
Dash Mount Gain Control Module Included

MARINE & POWERSPORT Speakers

Marine Grade Waterproof Coaxial Speaker
Fiber Reinforced ABS Frame w/ UV Protection
1" Titanium Dome Tweeter
Injection Molded Polypropylene Cone
Butyl Rubber Surround w/ UV Protection
Moisture Isolated Magnet Structure
Rubber Tweeter Pole Gasket
Quick Disconnect Terminals
Meets ROHS & CE Certification



SST SPEAKERS	MS.65W	MS.65B
Size and Configuration	6.5" 2-way	6.5" 2-way
Color	White	Black
MAX Power (watts)	160w	160w
RMS Power (watts)	80w	80w
Efficiency (1w/1m dB)	86dB	86dB
Top Mount Depth	3.00"	3.00"

100% Waterproof Enclosure & 4" Speaker System
High Density ABS Construction w/ UV Coating
Integrated Mounting Bracket Fits Most Roll Bar or Handlebar
Injection Molded Polypropylene Cone
1" Titanium Dome Tweeter
Quick Disconnect Wire Terminals
Meets ROHS and CE Certifications
4-ohm System Impedance

Powersport Speakers	Size & Color	MAX Power	RMS Power	Frequency Response	Efficiency (1w/1m dB)	Overall Size (HxWxL)
PSS.4	4" Titanium	100w	50w	100-20kHz	90dB	5" x 5" x 7"

MARINE Source Unit

SMR-31B
Single DIN CD Player w/32GB USB
Playback & Bluetooth



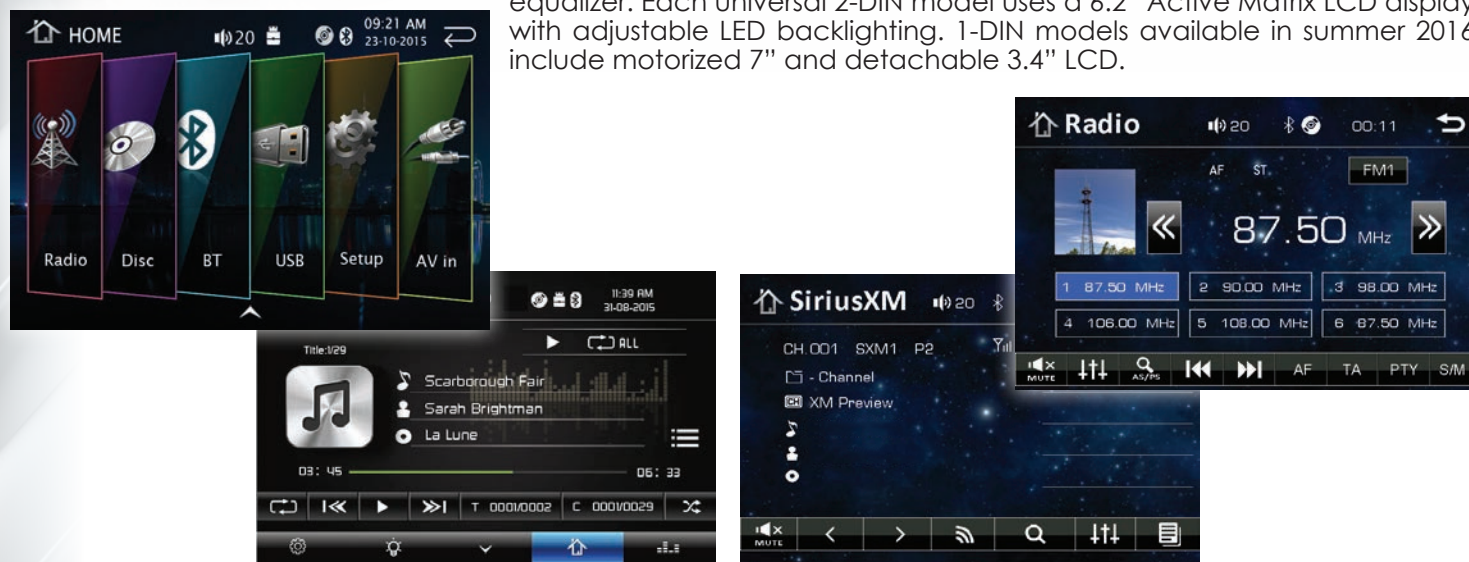
CD/MP3, AM/FM & USB Receiver
Theft Deterrent Detachable Faceplate
Bluetooth V2.0 Hands Free Calling from Enabled Phone
A2DP MP3 Audio Playback from Enabled Device
Playback from 32GB USB of MP3 & WMA
Playback from CD, CDR, CDRW of MP3 & WMA
AUX Audio Input for Personal Media Devices
Front & Rear Pre-Amp Output
300w 4ch. MOSFET Speaker Outputs
Custom & Pre-Set Equalizer Settings
Audio Staging Controls
12/24 Hour Digital Clock
Remote Control Included
Faceplate Carry Case Included



AptiX Source Units



New in 2016, Soundstream introduces the AptiX series head units. AptiX operating systems use an advanced microprocessors and central processing unit bringing lightning fast reaction time into automotive multimedia entertainment systems. Premium AptiX units feature built-in advanced GPS Navigation with MobileLink 2-way MHL complete smart phone integration, or Sirius/XM satellite radio ready interface. Standards for all AptiX models include SmartSense capacitive glass touch panel, Bluetooth V3.0 for hands-free calling, Adaptive Fast Charging of enabled mobile devices, and more. Select AptiX units add multi-color illumination or an advanced audio staging equalizer. Each universal 2-DIN model uses a 6.2" Active Matrix LCD display with adjustable LED backlighting. 1-DIN models available in summer 2016 include motorized 7" and detachable 3.4" LCD.



SmartSense Touch Screen

Traditional head unit touch screens require a physical connection between two conductive plastic panels to execute a command. SmartSense sophisticated sensors pinpoint the location of your finger by absorbing the conductivity on the surface of your skin. A crystal-clear glass surface significantly improves the image quality, having eliminated blurring plastic touch panels. SmartSense technology enhances your experience with superior, flawless interaction.



Adaptive Fast Charging

Adaptive Fast Charging

We demand top performance of our mobile devices to meet our social media and content streaming needs. To keep up with rapidly changing design trends, our mobile devices tend to rely on limited energy capacity, utilizing every efficiency to prolong the charge of the battery. AptiX source units feature USB Adaptive Fast Charge technology, reducing necessary down time to get you moving again. AFC has the potential to recharge enabled mobile device batteries from zero to up to 50% in about 30 minutes. (USB cable not included)

Bluetooth V3.0 Hands-Free Calling

Bluetooth V3.0 with Enhanced Data Rate increases traditional data transfer rates to 2.1 Mbit/s. This lightning quick information transfer increases clarity & virtually eliminates unwanted distortion during calls and wireless MP3 audio playback. Most Bluetooth enabled Smartphones will transfer phone book contacts, view recent call logs, and stream MP3 audio tracks.



AptiX AVN Source Unit

aptiX VRN-65HB

2-DIN GPS, DVD, CD/MP3, AM/FM Receiver w/ 6.2" LCD, Bluetooth, & MobileLink X2



GPS Navigation Enjoy the drive

VRN-65HB features GPS turn-by turn navigation for USA, Canada, & Mexico. Set your destination and follow the commands by text-to-speech directions, including lane guidance.

Additional features include favorites list, programmable home destination, destination fuel estimates, multi-lingual, multi-gender voices, speed limit warnings, and more!



VRN-65HB Details:

- Turn-by-Turn GPS Navigation of USA, Canada, & Mexico
- 12 Million Points of Interest Database Included
- Complete Integration of Select Android Enabled Devices
- SmartSense Glass Panel Touch Screen Technology
- Bluetooth V3.0 Hands-Free Calling from Enabled Phone
- A2DP Wireless MP3 Audio Playback from Enabled Device
- Built-in Front Panel Bluetooth Microphone
- Accepts OEM Steering Wheel Control Interfaces
- Playback from DVD & CD of MP3, MP4 & Other Video
- Playback from 64GB USB of MP3, MP4 & Other Video (rear)
- 2A 5V Adaptive Fast Charge of Mobile Devices (rear)
- 10-Band Audio Equalizer w/ User Presets
- ID3 MP3 Tag Reading for Track & Artist Information
- Rear Audio/Video Input for Personal Media Devices
- Front & Rear RCA Pre-Amp Audio Outputs
- Subwoofer RCA Audio Pre-Amp Output
- Video Output for Auxiliary Devices
- Rear View Camera Input w/ Trigger
- 300w 4ch. MOSFET Speaker Outputs
- Custom Backgrounds & Screen Savers
- Multi-Region FM Frequency Stepping
- 800x480 Widescreen Resolution
- 400NIT LED Backlight



MHL 2-Way

VRN-65HB also includes MHL MobileLink X2 mobile device integration, enabling complete control of your smartphones and tablets. Conveniently launch any application, post social media updates, or play your own videos and all other content on your mobile device. Your smart device display is mirrored to the head units larger LCD screen via USB, and all commands are sent via Bluetooth 3.0 connection. MHL MobileLink X2 ensures safe, hands-free operation of your smart device without the distractions of locating & handling a device.

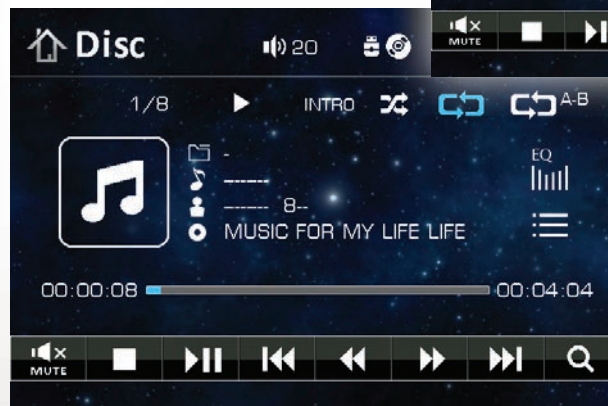
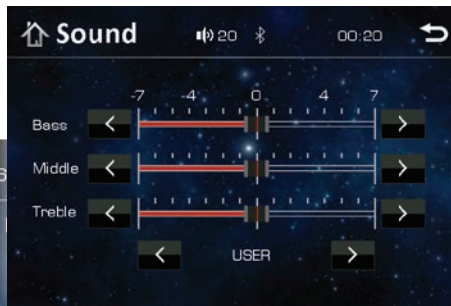
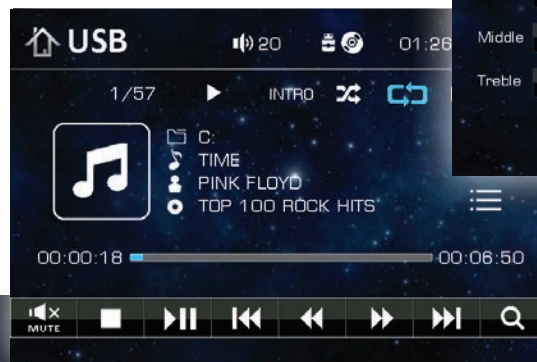
AptiX S/XM Source Unit



VR-65XB

2-DIN DVD, CD/MP3, AM/FM Receiver w/ 6.2" LCD, Bluetooth, & SXM Ready

NEW



Additional AptiX Details:

- SmartSense Glass Panel Touch Screen Technology
- Bluetooth V3.0 Hands-Free Calling from Enabled Phone
- A2DP Wireless MP3 Audio Playback from Enabled Device
- Built-in Front Panel Bluetooth Microphone
- Accepts OEM Steering Wheel Control Interfaces
- Playback from DVD & CD of MP3, MP4 & Other Video
- Playback from 64GB USB of MP3, MP4 & Other Video (rear)
- 2A 5V Adaptive Fast Charge of Mobile Devices (rear)
- ID3 MP3 Tag Reading for Track & Artist Information

AptiX Universal Source Unit



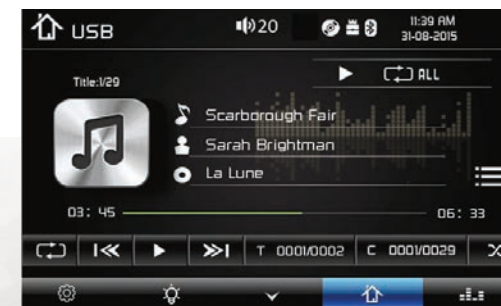
VR-65B

2-DIN DVD, CD/MP3, AM/FM Receiver w/ 6.2" LCD, & Bluetooth

NEW



Customize your head unit with variable color changing front panel illumination. Choose a specific color from 17 million combinations to match your interior lighting scheme, or slow motion and random color change for a full color spectrum effect.

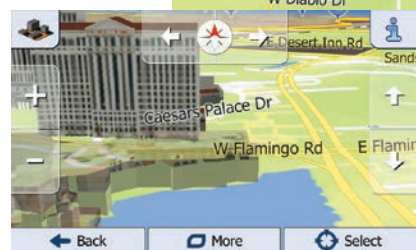
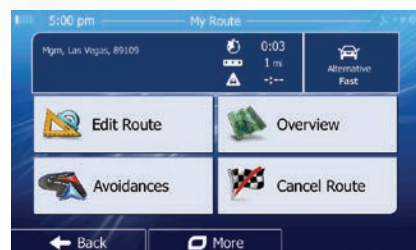
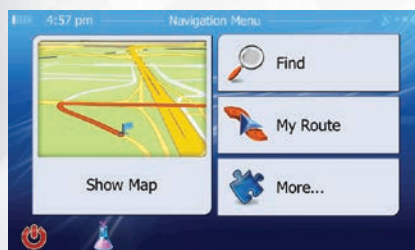


- Rear Audio/Video Input for Personal Media Devices
- Front & Rear RCA Pre-Amp Audio Outputs
- Subwoofer RCA Pre-Amp Audio Output
- Video Output for Auxiliary Devices
- Rear View Camera Input w/ Trigger
- 300w 4ch. MOSFET Speaker Outputs
- Multi-Region FM Frequency Stepping
- 800x480 Widescreen Resolution
- 400NIT LED Backlight

MobileLink 8.2 AVN Source Units



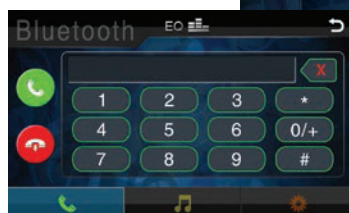
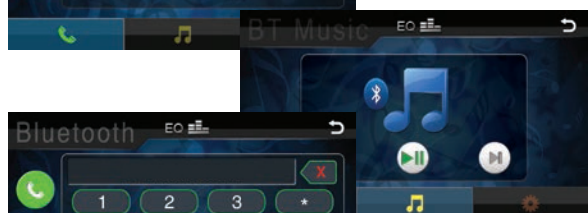
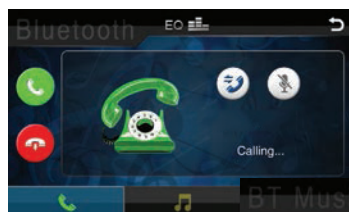
MobileLink X2 AVN source units feature GPS turn-by-turn navigation for USA, Canada, & Mexico. Set your destination and follow the commands by text-to-speech directions, including lane guidance. Additional features include favorites list, programmable home destination, destination fuel estimates, multi-lingual, multi-gender voices, speed limit warnings, and more!



MHL 2-Way

Mobile High-Definition Link

MHL MobileLink X2 mobile device integration enables complete control of your smartphones and tablets. Conveniently launch any application, post social media updates, or play your own videos and all other content on your mobile device. Your smart device display is mirrored to the head units larger LCD screen via USB, and all commands are sent via Bluetooth 3.0 connection. MHL MobileLink X2 ensures safe, hands-free operation of your smart device without the distractions of locating & handling a device.



Bluetooth

Bluetooth V3.0 with Enhanced Data Rate increases traditional data transfer rates to 2.1 Mbit/s. This lightning quick information transfer increases clarity & virtually eliminates unwanted distortion during calls and wireless MP3 audio playback. Most Bluetooth enabled Smartphones will transfer phone book contacts, view recent call logs, and stream MP3 audio tracks.



Digital Signal Processing features include a digital 10-band equalizer with 14dB boost or cut, custom presets, & factory presets. Additional DSP functions include variable subwoofer level control, reverb optimization, loudness adjustment, & sound staging controls.

MobileLink 8.2 AVN Source Units

VRN-64HB

2-DIN GPS, DVD, CD/MP3, AM/FM Receiver w/ 6.2" LCD, Bluetooth, & MobileLink X2



NEW

TOUCH SCREEN



GPS Navigation
Enjoy the drive

Mobile LINK

Bluetooth

DVD

USB

AUX INPUT

X300 WATT 4CH. AMPLIFIER

VRN-74HB

1-DIN GPS, DVD, CD/MP3, AM/FM Receiver w/ 7" LCD, Bluetooth, & MobileLink X2



NEW

TOUCH SCREEN



GPS Navigation
Enjoy the drive

Mobile LINK

Bluetooth

DVD

USB

AUX INPUT

X300 WATT 4CH. AMPLIFIER

MobileLink 8.2 Source Units

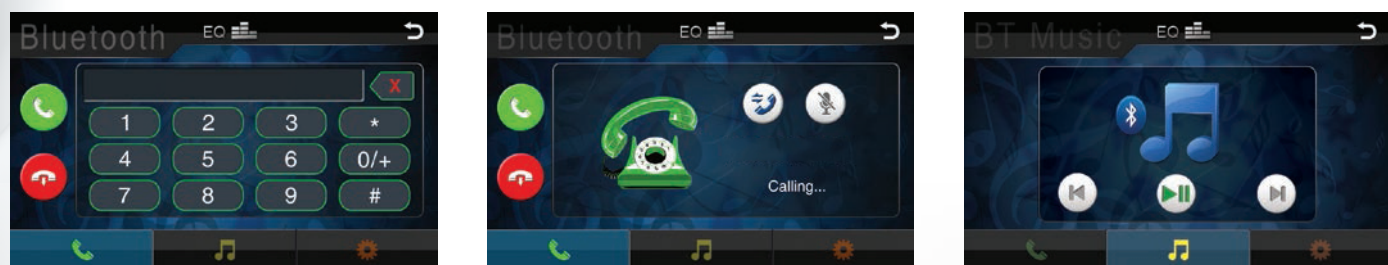


MobileLink 8.2 mobile device integration enables complete control of your smartphones and tablets. Conveniently launch any application, post social media updates, or play your own videos and all other content on your mobile device. Your smart device display is mirrored to the head units larger LCD screen, and all commands are sent via Bluetooth 3.0 connection. MobileLink 8.2 ensures safe, hands-free operation of your smart device without the distractions of locating & handling the device. MobileLink integration cables are available for select Android enabled devices.



Bluetooth™

Bluetooth V3.0 with Enhanced Data Rate increases traditional data transfer rates to 2.1 Mbit/s. This lightning quick information transfer increases clarity & virtually eliminates unwanted distortion during calls and wireless MP3 audio playback. Most Bluetooth enabled Smartphones will transfer phone book contacts, view recent call logs, and stream MP3 audio tracks.



Additional MobileLink 8.2 Details:

- Complete Integration of Select Android Enabled Devices (requires MobileLink accessory cable, sold separate)
- Bluetooth V3.0 Hands-Free Calling from Enabled Phone
- A2DP Wireless MP3 Audio Playback from Enabled Devices
- Built-in Microphone & External Microphone Included
- Accepts OEM Steering Wheel Control Interfaces
- Advanced FM/AM Tuner with RDBS Receiver
- Playback from DVD & CD of MP3 & MP4
- Playback from 64GB SD/USB of MP3 & MP4

- ID3 MP3 Tag Reading for Track & Artist Information
- AUX Audio Input for Personal Media Devices
- Front & Rear Pre-Amp Audio Outputs
- Variable Subwoofer Pre-Amp Output
- Video Output for Auxiliary Devices
- Rear View Camera Input w/ Trigger
- 300w 4ch. MOSFET Speaker Outputs
- Multi-Region FM Frequency Stepping
- 800x480 Widescreen Resolution
- 400NIT LED Backlight

MobileLink Interface Cables

HDM-i4 ~ iPhone4, iPhone4S, iPad2, & iPad3

HDM-A2 ~ Galaxy 2 & Select 5-Pin Android Devices

HDM-A3 ~ Galaxy 3, 4, 5, & Select 11-PIN Android Devices



5ft interface cable unlocks 1080p video and audio playback from enabled mobile devices. Each interface cable features the appropriate micro connector for your mobile device. Soundstream MobileLink interface cables also charge your mobile device. Available for select IOS and Android devices.

MobileLink 8.2 Source Units

VR-64H2B

2-DIN DVD, CD/MP3, AM/FM Receiver w/ 6.2" LCD, Bluetooth, & MobileLink 8.2



VR-74H2B

1-DIN DVD, CD/MP3, AM/FM Receiver w/ 7" LCD, Bluetooth, & MobileLink 8.2



Multimedia Source Units

VR-651B
2-DIN DVD, CD/MP3, USB/SD, AM/FM Receiver w/ Bluetooth & 6.5" LCD Touchscreen



TOUCH SCREEN

Bluetooth DVD USB AUX INPUT X300 WATT 4CH. AMPLIFIER

VR-346B
2-DIN DVD, CD/MP3, USB/SD, AM/FM Receiver w/ Bluetooth & 3.4" LCD



Bluetooth DVD USB AUX INPUT X300 WATT 4CH. AMPLIFIER



VIR-7830B
1-DIN DVD, CD/MP3, USB/SD, AM/FM Receiver w/ Bluetooth & 7" LCD Touchscreen



TOUCH SCREEN

Bluetooth DVD USB AUX INPUT X300 WATT 4CH. AMPLIFIER

VR-730
VR-730B (w/ Bluetooth V2.0)
1-DIN DVD, CD/MP3, USB/SD, AM/FM Receiver w/ Bluetooth & 7" Detachable LCD Touchscreen



TOUCH SCREEN

Bluetooth DVD USB AUX INPUT X300 WATT 4CH. AMPLIFIER

ADDITIONAL SERIES DETAILS:

Bluetooth V2.0 Hands Free Calling From Enabled Phones
A2DP Wireless MP3 Audio Playback From Enabled Phones
Accepts OEM Steering Wheel Control Interface
Playback from DVD & CD of MP3 & MP4
Playback from 32GB SD/USB of MP3 & MP4
ID3 MP3 Tag Reading for Track & Artist Information
AUX A/V Input for Personal Media Devices
Front & Rear Pre-Amp Audio Outputs

Subwoofer Pre-Amp Audio Output
Video Output for Auxiliary Devices
Rear View Camera Input w/ Trigger
300w 4ch. MOSFET Speaker Outputs
Custom & Preset Equalizer Settings
Multi-Region FM Frequency Stepping
800x480 Widescreen Resolution
400 NIT LED Brightness

Multimedia Source Units

VR-345

VR-345B (w/ Bluetooth V2.0)

Single DIN A/V Source Unit w/ Detachable 3.4" LCD Screen



1-DIN Multimedia Receiver w/ High Definition 3.4" LCD Display
Theft Deterrent Detachable Faceplate w/ Carry Case
Bluetooth V2.0 Hands Free Calling From Enabled Devices
A2DP Wireless MP3 Audio Playback From Enabled Devices
Playback from DVD & CD of MP3 & MP4
Playback from 32GB SD/USB of MP3 & MP4
MP3 ID3 Tag Reading of MP3 Files
AUX A/V Input for Personal Media Devices
Dual Zone for Rear Seat or Overhead Entertainment
Front & Rear Pre-Amp Audio Outputs
Video Output for Auxiliary Devices
Rear View Camera Input w/ Trigger
300w 4ch. MOSFET Speaker Outputs
Custom & Preset Equalizer Settings
Multi-Region FM Frequency Stepping
720x420 High Definition Widescreen Resolution
400NIT LED Brightness

SDR-342B

Single DIN Digital Media Receiver w/ Detachable 3.4" LCD Screen



1-din Mechless Digital Media Player
Theft Deterrent Detachable Flip-Down Front Faceplate
Playback from up to 32GB SD/USB of 720P MP4, AVI, & more
Audio Playback of MP3, AAC, AC3, & WMA
Picture Viewer of JPEG, PNG & GIF
ID3 Tag Reading for Track & Artist Information
AUX Audio Input for Personal Media Devices
18 FM / 12 AM Station Memory
300w 4ch. MOSFET Powered Speaker Level Outputs
1 Set of Low-Level RCA Audio Outputs
Custom Audio Staging & EQ Controls
Multi-Region FM/AM Frequency Stepping
720x420 HD Resolution w/ 400cd/m2 Brightness
4" Mounting Depth

VR-103B

Single DIN Mobile 8 Multimedia Source Unit w/ Detachable 10.3" LCD Touch Screen

Motorized 10.3" LCD Touchscreen w/ Angle Adjustment
Theft Deterrent Detachable Faceplate w/ Carry Case
Standard & Extended Installation Sleeve & Trim Ring Included
SmartSense Low Glare Anti-Reflection LCD Touch Screen Technology
Accepts Fahrenheit OEM & Steering Wheel Control Interface
Bluetooth V2.0 Hands Free Calling From Enabled Devices
A2DP Wireless MP3 Audio Playback From Enabled Devices
Playback from DVD & CD of MP3 & MP4
Playback from 32GB SD/USB of MP3 & MP4
ID3 MP3 Tag Reading for Track & Artist Information
AUX A/V Input for Personal Media Devices
Front & Rear Pre-Amp Audio Outputs
Variable Subwoofer Pre-Amp Output
Video Output for Auxiliary Devices
Rear View Camera Input w/ Trigger
300w 4ch. MOSFET Speaker Outputs
Custom & Preset Equalizer Settings
Multi-Region FM Frequency Stepping
1,024x600 High Definition Widescreen Resolution
400 NIT Energy Efficient LED Display Backlight



Rear View Cameras

VL-3CSB

License Plate Frame w/ Night Vision Camera, Back-Up Sensors, On-Screen Distance Gauge, & Proximity Alerts

U.S. Patent #7,106,183 B2
2 Object Sensors w/ Proximity Alert
1/4" CCD Color Camera
0.5 LUX Low Light Lens
Waterproof Camera Housing
Waterproof External Wire Connections
Vertically Pivoting Camera Housing
7' Effective Viewing Distance
Inconspicuous Speaker for Alerts
8 IR LEDs for Night Viewing
On-Screen Distance Gauge
130° Capture Angle
RCA Video Output
Cast Steel Alloy Frame
Reversed Image
640 x 480 Resolution



VLP2-CSB

License Plate Frame w/ Night Vision Camera, Back-Up Sensors, On-Screen Distance Gauge, & Proximity Alerts

U.S. Patent #7,106,183 B2
3 Object Sensors w/ Proximity Alert
1/4" CCD Color Camera
0.5 LUX Low Light Lens
Waterproof Camera Housing
Waterproof External Wire Connections
Vertically Pivoting Camera Housing
7' Effective Viewing Distance
Inconspicuous Speaker for Alerts
8 IR LEDs for Night Viewing
On-Screen Distance Gauge
130° Capture Angle
RCA Video Output
Cast Steel Alloy Frame
Reversed Image
640 x 480 Resolution



VLP-1CA

Chrome License Plate Frame with Camera

Chrome Finish on ABS License Plate Frame
Vertically Pivoting Camera Housing
On-Screen Distance Gauge
1/4" CCD Wide View Color Camera
0.1 LUX Low Light Lens
160° Capture Angle
RCA Video Output
Reversed Image
648 x 488 Resolution



CD Audio Source Units

VCD-22B
Double DIN CD/MP3, AM/FM Receiver
w/ 32GB USB Playback & Bluetooth

NEW



CD/MP3

CHANGEABLE ILLUMINATION



ADDITIONAL SERIES DETAILS:

Bluetooth V3.0 Hands Free Calling from Enabled Phone
A2DP MP3 Audio Playback from Enabled Device
Playback from 32GB USB of MP3 & WMA
Playback from CD, CDR, CDRW of MP3 & WMA
AUX Audio Input for Personal Media Devices
Front & Rear Pre-Amp Output

300w 4ch MOSFET Speaker Outputs
Custom & Pre-Set Equalizer Settings
Remote Control Included
Theft Deterrent Detachable Face (1-Din Only)
Faceplate Carry Case Included (1-Din Only)
Multi-Region FM Frequency Stepping

VCD-21
VCD-21B (w/ Bluetooth)
Single DIN CD Player w/32GB USB Playback & Bluetooth

NEW



CD/MP3



Digital Audio Source Units

VM-22B
Single DIN Digital Media Receiver
w/ 32GB SD/USB Playback, AM/FM Receiver, & Bluetooth

NEW



CHANGEABLE ILLUMINATION



ADDITIONAL SERIES DETAILS:

Mechless Digital Media Player
Bluetooth V3.0 Hands Free Calling From Enabled Devices
A2DP Wireless MP3 Audio Playback From Enabled Devices
Playback from 32GB SD/USB of MP3 & MP4
ID3 MP3 Tag Reading for Track & Artist Information
AUX Audio Input for Personal Media Devices
Front & Rear Pre-Amp RCA Outputs

Subwoofer Pre-Amp RCA Output
300w 4ch. MOSFET Speaker Outputs
Custom & Preset Equalizer Settings
Remote Control Included
Theft Deterrent Detachable Faceplate (1-Din Only)
Faceplate Carry Case Included (1-Din Only)
Multi-Region FM Frequency Stepping

VM-21B
Single DIN Digital Media Receiver w/ 32GB SD/USB Playback, AM/FM Receiver, & Bluetooth

NEW



Overhead Entertainment

VCM-103DAC

Ceiling Mount DVD Entertainment System w/ High Resolution 10.3" LCD & AirCast

Wirelessly Stream Video & Content From Your Smart Device
Compatible w/ DLNA, Miracast, AirPlay, and AllShare Devices
10.3" High Resolution LCD Screen
1,024 x 600 16:9 Widescreen Resolution
Interchangeable Color Skins (beige, black, grey)
Automotive-Spec DVD Transport for Extreme Conditions
Playback from DVDR/RW of 1080p MP4 & AVI
Playback from 32GB SD/MMC or USB of 1080p MP4 & AVI
RCA A/V Input from Auxiliary Sources
Rear Panel RCA A/V Input from Game Console
Pre-Amp Audio Outputs
Single Channel Wireless IR Transmitter
2 Wireless IR Headphones Included
330 Ch. FM Stereo Transmitter for OEM Integration
NTSC / PAL Auto Selection
400 NIT Screen Brightness
Dimensions: 13" w x 11" d x 2.5" h



VCM-103DMH

Ceiling Mount DVD Entertainment System w/ High Resolution 10.3" LCD & MobileLink Input

VCM-103DM

Ceiling Mount DVD Entertainment System w/ High Resolution 10.3" LCD

MobileLink Input for Smart Device Connectivity
10.3" High Resolution LCD Screen
1,024 x 600 16:9 Widescreen Resolution
Interchangeable Color Skins (beige, black, grey)
Automotive-Spec DVD Transport for Extreme Conditions
Playback from DVDR/RW of 1080p MP4 & AVI
Playback from 32GB SD/MMC or USB of 1080p MP4 & AVI
RCA A/V Input from Auxiliary Sources
Rear Panel RCA A/V Input from Game Console
Pre-Amp Audio Outputs
Single Channel Wireless IR Transmitter (use VHP-10 or VHP-11)
330 Ch. FM Stereo Transmitter for OEM Integration
Full Function Remote Control Included
NTSC / PAL Auto Selection
400 NIT Screen Brightness
Dimensions: 13" w x 11" d x 2.5" h



MobileLink Interface Cables

HDM-i4 ~ iPhone4, iPhone4S, iPad2, & iPad3

HDM-A2 ~ Galaxy 2 & Select 5-Pin Android Devices

HDM-A3 ~ Galaxy 3, 4, 5, & Select 11-PIN Android Devices

5ft interface cable unlocks 1080p video and audio playback from enabled mobile devices. Each interface cable features the appropriate micro connector for your mobile device. Soundstream MobileLink Interface cables also charge your mobile device. Available for select iOS and Android devices.



Overhead Entertainment

VCM-143DMH

Ceiling Mount DVD Entertainment System w/ High Definition 14.3" LCD & MobileLink Input

Interchangeable Color Skins (beige, black, grey)
Car-Spec DVD Drive for Extreme Temperature Exposure
MobileLink Input for Smart Device Connectivity
Playback from DVDR/RW of 720p MP4
Playback from 32GB SD Card or USB of 720p MP4
Flash Memory for Last Position Recall
Single Channel Wireless IR Transmitter (use VHP-10, VHP-11)
8-ch FM Stereo Transmitter for OEM Integration
RCA A/V Input for Auxiliary Sources
RCA A/V Output for Multiple Component Integration
Triggered Bright White LED Dome Light
NTSC / PAL Auto Selection
1,366 x 768 16:9 Widescreen Resolution
400 NIT Screen Brightness
Dimensions: 12.75" w x 7.5" d x 2" h



VCM-11DXX

Ceiling Mount DVD Entertainment System w/ 11.2" LCD

Interchangeable Color Skins (beige, black, grey)
Color Matched Trim Rings for Sculptured Ceilings Included
45°/45° Swivel Screen for Angled Viewing
Car-Spec DVS DVD Drive for Extreme Temperature Exposure
Playback from DVDR/RW of 720p MP4
Playback from 32GB SD Card or USB of 720p MP4
Flash Memory for Last Position Recall
Single Channel Wireless IR Transmitter (use VHP-10, VHP-11)
8-ch FM Stereo Transmitter for OEM Integration
A/V Input for Auxiliary Sources
Rear Panel RCA A/V Input for Game Console
A/V Output for Multiple Component Integration
Rear Panel Play/Pause Control
Triggered Bright White LED Dome Light
Full Function Remote Control Included
NTSC / PAL Auto Selection
800 x 480 16:9 Widescreen Resolution
400 NIT Screen Brightness
Dimensions: 14" w x 12.5" d x 2.5" h



VDVD-165

Single Din DVD Player w/ 32GB USB Playback

Playback from DVDR/RW of MP4
Playback from 32GB USB of MP4
In-Dash, Floor, & Vertical Mounting Brackets Included
DIN Size Trim Ring For In-Dash Mounting Included
Flash Memory for Last Position Recall
Remote Control & IR Repeater Included
OSD On Screen Display
Digital Anti-shock
A/V Pre-amp Outputs, 2V
Dimensions: 6.4" x 6.2" x 2"



Rear Seat Entertainment

- VHD-99BK Black
- VHD-99GR Grey
- VHD-99BG Beige



Universal Replacement Headrest Pre-Loaded w/ DVD Player, & 9" LCD Touch Screen



Additional Details:

Adjustable Universal Installation Headrest w/ 9" Swiveling LCD Touch Screen Control of All On-Screen Menus & Commands
 3 Changeable Color Skins Included (grey, beige, black)
 Playback from DVDR/RW of 720p MP4 & Other Video Formats
 Playback from 32GB USB of MP4 & Other Video Formats
 Dual Channel Wireless IR Headphone Transmitter
 1 Wireless IR Youth Fit Headphone Included
 FM Stereo Transmitter for Car Stereo Integration
 AUX A/V Input for Game Console or Personal Media Devices

RCA A/V Input for Auxiliary Source or Opposite Headrest
 RCA A/V Output to Opposite Headrest
 Hardwired 3.5mm Headphone Output
 3/8" Locking Pole w/ 1/2" & 9/16" Adapters
 4.75" ~ 8.25" Pole Width Adjustment
 NTSC / PAL Auto Selection
 800 x 480 16:9 Widescreen Resolution
 400 NIT Screen Brightness
 Dimensions: 10.5" w x 8" h x 5.5" d

Rear Seat Entertainment

- VHD-90AC w/ DVD Player, 9" LCD Screen, AirCast, & Headphone
- VHD-90HD w/ DVD Player, 9" LCD Screen, & MobileLink Input
- VH-90HD w/ 9" LCD & MobileLink Input
- VHD-90CC w/ DVD Player & 9" LCD Screen
- VHD-70CC w/ DVD Player & 7" LCD Screen
- VH-90CC w/ 9" LCD
- VH-70CC w/ 7" LCD



Additional Series Details:

Wirelessly Stream Video & Content From Your Smart Device (90AC)
 Compatible w/ DLNA, Miracast, AirPlay, and AllShare Devices (90AC)
 MobileLink Input for Smart Device Mirroring (90HD & 90AC)
 View All Content from Enabled Smart Devices (90HD & 90AC)
 Playback from DVDR/RW of 720p MP4 & Other Formats (VHD only)
 Playback from 32GB USB of MP4 & Other Video Formats (VHD only)
 1 Wireless IR Headphone Included (90AC only)
 Dual Channel Wireless IR Headphone Transmitter (use VHP-12)
 FM Stereo Transmitter for OEM Integration (VHD models only)
 AUX A/V Input for Game Console or Personal Media Devices

RCA A/V Input for Auxiliary Source or Opposite Headrest
 RCA A/V Output to Opposite Headrest (VHD only)
 Hardwired Headphone Output
 3 Changeable Color Skins Included (grey, beige, black)
 3/8" Locking Pole w/ 1/2" & 9/16" Adapters
 4.75" ~ 8.25" Pole Width Adjustment
 NTSC / PAL Auto Selection
 800 x 480 16:9 Widescreen Resolution
 400 NIT Screen Brightness
 Dimensions: 11.5" w x 8.5" h x 6" d (90)
 Dimensions: 10" w x 7" h x 5.5" d (70)

Rear Seat Entertainment

SHAD-9H

Universal Headrest Mount DVD Player w/ 9" LCD & MobileLink Input



Bracket Mount DVD Player Solution for Vehicles w/ Active Headrest
 Front Loading DVD Player for DVD/RW 720P Playback
 32GB USB & SD Card Readers for MP4 Playback
 Dual Channel Wireless IR Transmitter (use HP-12S)
 FM Stereo Transmitter for Easy OEM Integration
 AUX A/V Input for Game Console or Personal Media Devices
 RCA A/V Input for Auxiliary Source or Opposite Headrest
 RCA A/V Output to Auxiliary Source or Opposite Headrest
 3.5mm Hardwired Headphone Output Jack
 3 Changeable Colors Skins Included (grey, beige, & black)
 4.75"-8.25' Pole Width Adjustment
 Various Pole Diameter Adapters Included
 NTSC / PAL Auto Selection
 800 x 480 16:9 Widescreen Resolution
 400 NIT Screen Brightness



MobileLink Interface Cables

HDM-i4 ~ iPhone4, iPhone4S, iPad2, & iPad3

HDM-A2 ~ Galaxy 2 & Select 5-Pin Android Devices

HDM-A3 ~ Galaxy 3, 4, 5, & Select 11-PIN Android Devices

5ft interface cable unlocks 1080p video and audio playback from enabled mobile devices. Each interface cable features the appropriate micro connector for your mobile device. Soundstream MobileLink Interface cables also charge your mobile device. Available for select iOS and Android devices.



VHR-72IRA

7" Dual Channel IR Headrest Monitor

Two Auxiliary A/V Input
 Dual Channel IR Transmitter (use VHP-12)
 Wired Headphone Output
 Low Reflection TFT-LCD Monitor
 Ultra Bright LED Backlighting
 Selectable Aspect Modes

Preset/Manual Image Control
 Dimmer Control
 Remote Control Included
 NTSC/PAL Selection
 480 x 234 (16:9) Image Resolution
 Cutout Dimensions: 7" w x 4.75" h x .75" d



Headphones

VHP-10 Single 1ch. IR Wireless Headphone

EVA hard carrying case included
 Foldable Ear Pads for Compact Storage
 On/Off Switch Saves Battery Life
 Auto Power Off Function

Auto Mute Function
 Variable Volume Control
 ALC Auto Level Control



VHP-11 Single 1ch. IR Wireless Headphone

VHP-12 Single 2ch. IR Wireless Headphone

Adjustable Headphone Straps
 Channel Selectable From Each Headphone
 Ear Pads Fold Flat for Seat Pocket Storage
 EVA hard Carry Case Included
 MP-3 Player Input Via 3.5mm Jack

On/Off Switch Saves Battery Life
 Auto Power Off Function
 Auto Mute Function
 Variable Volume Control
 ALC Auto Level Control



VHP-22 Pair 1ch. IR Wireless Headphones with Transmitter

Stereo Audio IR Transmitter
 Adjustable Headphone Straps
 Ear Pads Fold Flat for Seat Pocket Storage
 EVA hard Carry Case Included
 MP-3 Player Input Via 3.5mm Jack
 On/Off Switch Saves Battery Life

Auto Power Off Function
 Auto Mute Function
 Variable Volume Control
 ALC Auto Level Control



VHP-900 Single 2ch. RF 900MHz Wireless Headphone

VHP-9002 Pair 2ch. RF 900MHz Wireless Headphones with Transmitter

Dual Stereo Audio Inputs
 Channel Selectable From Each Headphone
 100ft. Operational Distance
 Adjustable Headphone Straps
 Ear Pads Fold Flat for Seat Pocket Storage
 EVA hard Carry Case Included

MP-3 Player Input Via 3.5mm Jack
 On/Off Switch Saves Battery Life
 Auto Power Off Function
 Auto Mute Function
 Variable Volume Control
 ALC Auto Level Control



Window Film Tint

Soundstream window tint film uses impregnated color chips and twin UV inhibitors in the initial manufacturing process. This insures maximum benefit for your interior. Traditional manufacturing process uses clear chips and adds dyes, pigments, or spray-on colors, and a UV inhibitor in the adhesive. Soundstream Window Tint is built to last and protect...

Everlast Series

- EV-05 6% VLT
- EV-15 16% VLT
- EV-20 21% VLT
- EV-35 35% VLT
- EV-50 51% VLT

Elite Series

- LT-05 6% VLT
- LT-20 22% VLT
- LT-35 33% VLT
- LT-50 51% VLT



Additional Benefits

Color-stable film that never bubbles, peels, or turns purple over time
 Malleable for seamless attachment to curved surfaces
 American made adhesives for impervious seal and undistorted views
 Reduces heat, glare and overall energy costs when used in home or auto
 Eliminate harmful UV by 99% to protect interior materials in home or auto
 Lifetime Warranty with Everlast Series, Made in U.S.A.
 4-Year Prorated Warranty with Elite Series
 Available in 20", 24", 36", 40" Width, all in 100ft. length
 Everlast Series Available in 60" Width

Shop for other amplifiers on our website.