

Spicer® Heavy-Duty SPL® Series Main Driveshaft and Inter-Axle Shaft

Engineered to supply greater torque, durability, and savings
for severe-duty and low-emission, high-efficiency trucks.

SPL® 170, SPL® 250, SPL® 350 Driveshaft



SPICER®

Drivetrain Products



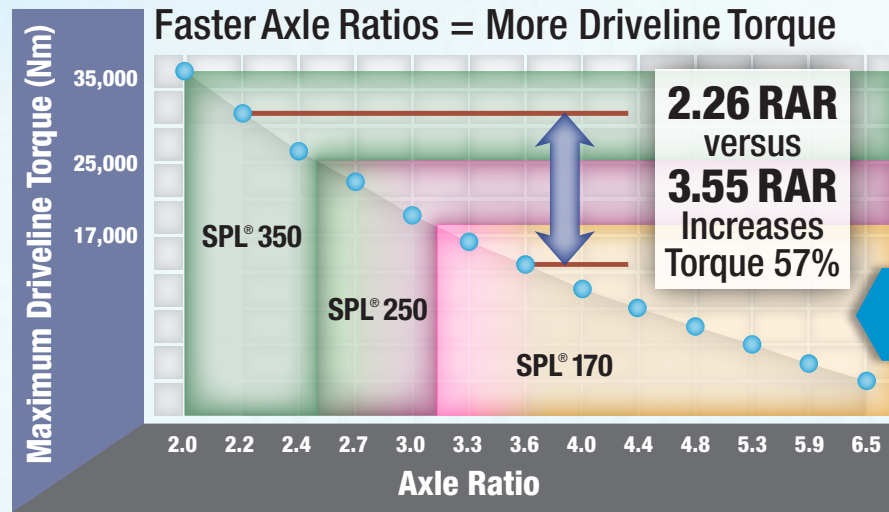
The most robust and efficient family of heavy-duty driveshafts and inter-axle shafts in their class, these innovative products eliminate restrictions on engine speeds and torque to support the fastest axle ratios in today's vehicles.



Engineering Driveshafts for Lower RPMs

The movement toward engine downspeaking has been accelerating since the first fuel-efficiency standards for new heavy-duty trucks were issued, and these efforts have intensified as OEMs and fleet managers continue to demand maximum vehicle performance.

While engine downspeaking offers increased fuel economy and decreased emissions, the **faster axle ratios** needed to accommodate the **lower RPMs** result in **additional torque** in the drivetrain, placing much **higher stresses** on the main driveshaft, axles, and inter-axle shaft.

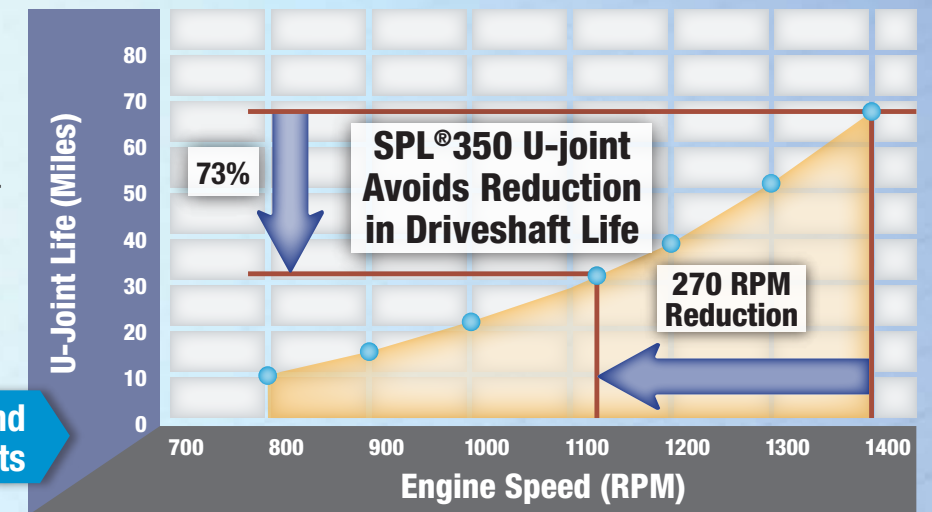


The Impact of Axle Ratios on Driveline Torque

Lower Engine Speeds Demand the Most Durable U-Joints

SPL® 350 U-Joint Puts the Life into Downspeaking Applications

The *right* driveshaft and inter-axle shafts with **robust and durable components** can **handle the added input torque** with even **greater reliability**. That's why Dana engineered the Spicer Life® Series with an exclusive design that **accommodates faster axle ratios** without sacrificing life.



Better performance. Longer life. Lower operating costs. We've set the standard – so you can enjoy the advantages.

Spicer Life® Series U-Joints and Driveshafts

The Spicer® family of heavy-duty U-joints extends the life of the drivetrain and can eliminate restrictions on engine speed and torque in today's Class 8 linehaul and vocational vehicles. No other U-joints are better equipped to meet the needs of today's high-efficiency trucks with such long-term reliability.

Dana's SPL® Series of U-joints are equipped with **High Power Density™ (HPD™)** features which deliver higher torque, a smaller package, and a longer life while working with the entire powertrain system to maximize reliability and efficiency. Spicer driveshafts also feature a service-free option to save you money and add convenience.

Benefits
40% more torque carrying capacity than the competition
Service-free option provides a maintenance-free product
Dana support provides cutting-edge information and superior under-the-vehicle knowledge
Smaller packaging allows for greater flexibility among driveshaft configurations
Industry leader providing broadest range of products to meet your requirements

The SPL® 170, SPL® 250, and SPL® 350 U-Joints from Dana offer the **HIGHEST TORQUE CAPACITY IN THE INDUSTRY.**



SPL® 170
Torque capacity:
12,538 ft.-lb.
[17,000 Nm]

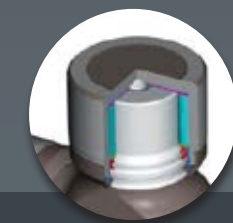


SPL® 250
Torque capacity:
18,439 ft.-lb.
[25,000 Nm]



SPL® 350
Torque capacity:
25,815 ft.-lb.
[35,000 Nm]

Features and Options



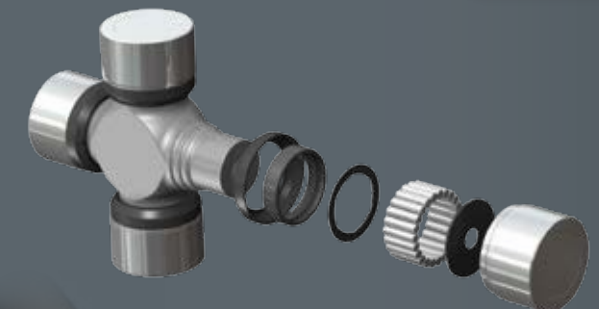
Optional permanently lubricated U-joint with extended warranty requires no lubrication for the life of the product.



Permanently lubricated slip spline protects against contaminants and eliminates maintenance.

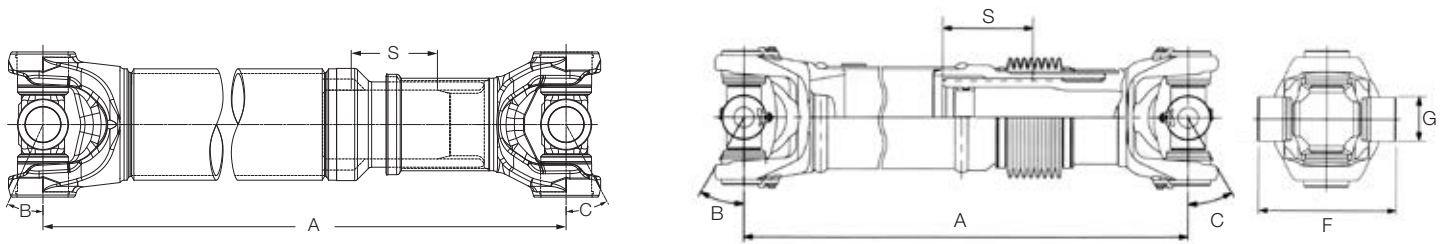


U-joints are engineered to **extend bearing life** and offer superior performance.



Increased tube diameter and decreased wall thickness offer greater strength without the weight, enabling greater load capacity.

Spicer Life® Series Heavy-Duty Driveshafts Specifications



Spicer® Heavy-Duty SPL® Main Driveshaft and Inter-Axle Shaft

Driveshaft Assembly Part Number	Minimum Length Collapsed Centerline to Centerline of Cross "A"		Slip Joint End			Tight Joint End			U-Joint Span "F"		Bearing Cup Diameter "G"	
			Slip "S"		Maximum Angle "B"	Tube Size		Maximum Angle "C"				
			mm	in		mm	in					
SPL®140 140DS55007	430	16.93	110	4.33	25°	107.0 x 3.5 DOM	4.21 x .138 DOM	25°	139	5.46	49	1.93
SPL®140HD 140DS55001						110.0 x 5.0 DOM	4.33 x .197 DOM					
SPL®170 170DS55007C 170DS55007F	440	17.34	110	4.33	25°	126.0 x 3.0 DOM	4.96 x .118 DOM	25.5°	164	6.46	55	2.16
SPL®170HD 170DS55011C 170DS55011F	440	17.34	110	4.33	25°	128.5 x 4.25 DOM	5.06 x .167 DOM	25°	164	6.46	55	2.16
SPL®170/A 170IA55010C 170IA55010F	528.6	20.81	150	5.91	45°	116.7 x 4.57 DOM	4.59 x .180 DOM	45°	164	6.46	55	2.16
SPL®250 250DS55007C 250DS55007F	450.3	17.73	110	4.33	25°	128.5 x 4.25 DOM	5.06 x .167 DOM	25°	163	6.42	60	2.37
SPL®250HD 250DS55011C 250DS55011F	450.3	17.73	110	4.33	25°	130.0 x 5.0 DOM	5.12 x .197 DOM	25°	163	6.42	60	2.37
SPL®250 I/A 250IA55001C 250IA55001F	507.7	19.99	150	5.41	45°	128.7 x 4.25 DOM	5.07 x .167 DOM	45°	163	6.42	60	2.37
350DS55001 350DS55001F	483	19.01	110	4.33	15°	138.5 x 4.25 DOM	5.45 x .167 DOM	15°	172	6.77	65	2.56
350DS55002 350DS55002F						140.0 x 5.0 DOM	5.51 x .197 DOM					

For additional configurations, contact Spicer Driveshaft Engineering for specific application information.

Warranty Information

Spicer Life XL® Heavy-Duty (SPL® 170XL, SPL® 250XL, SPL® 350XL)

XL (Relube) 3 Years/Up to 350,000 miles (560,000 km)

Limited Warranty Parts and Labor

Additional 1 Year/50,000 miles free service for parts only

Lubrication Intervals – Linehaul*

Spicer Life XL® Heavy-Duty (SPL® 170XL, SPL® 250XL, SPL® 350XL)

First Lubrication Cycle

Relubrication Cycle

Up to
350,000 mi
(560,000 km)

or 3 years

Up to
100,000 mi
(160,000 km)

or 6 months

*Information is subject to change. Please consult Lubrication Guide LM072012 for all applications.



SPICER®

Drivetrain Products