

WARRIOR
PRODUCTS
JEEP
CATALOG



WARRIOR PRODUCTS

In 1992, President and CEO of Warrior, Inc. Thomas Richardson opened a repair shop that focused on off-road vehicles. Soon after opening, it became clear that customers wanted more than just repairs. They wanted accessories for their jeeps, trucks, and SUVs. Parts derived from innovation and integrity; quality that exceeds industry standards. Customer demand for high quality parts outweighed the market's ability to produce them. This realization motivated Tom Richardson to build shackles, hitches, and other hard parts which facilitated his entrance into the off-road 4x4 market. And Warrior Products was born.

Located in the Pacific Northwest, Warrior Products manufactures Jeep, Toyota, and 4x4 Off-Road accessories. Warrior proudly manufactures in the USA; committed to building "Made in the USA" products of the highest quality, producing the most dependable Jeep and off-road vehicle parts in the automotive aftermarket industry.

As the company grew, Warrior began manufacturing full product lines for Jeep vehicles; expanding on shackles, hitches, and other hard parts. Beginning with the early CJ's, Warrior became well known for producing rugged aftermarket parts including; bumpers, body armor, fender flares, suspension components, mounting brackets, doors, lighting, racks, side steps, towing accessories, interior accessories, and soft goods.

Warrior's commitment to quality, integrity, innovation, and service drives everything done at Warrior Products. Warrior manufactures parts in the USA to ensure they are of the highest quality possible, and then backs them up with the best customer service in the industry.

People will always want to customize their vehicles, whether an import, muscle car, Jeep, or truck. Upgrading stock models for performance and appearance, bringing buyers closer to that mental picture of their dream vehicle.

Products for functionality and aesthetics at competitive prices; Products that customers are proud to show off and brag about. That is the Warrior way.

MISSION STATEMENT

Warrior Products is committed to building "Made in the USA" products of the highest quality, producing the most dependable Jeep and off-road vehicle parts in the automotive aftermarket industry. The people we employ represent our company and this commitment. The image portrayed and the manner in which situations are resolved is a critical part of every employee's job responsibility. Our passion is to provide the best quality products and service to our customers and be recognized in our industry as an innovative leader in every market we serve. Our dedication and leadership will never be less than the expectations of our customers.

FINISHES

Warrior Products offers the broadest selection of base materials and surface finishes in its line of Body Armor Exterior Protection accessories available on the market today. In addition to our signature aluminum diamond plate material, we offer the following five finishes:



Diamond Plate – Constructed of #3003 aluminum treadbrite and highly polished to a bright luster, these accessories have the look of chrome, yet perform better under adverse conditions. (Chrome may flake and peel, and plastic may break.)



Black Diamond Plate – Available for all aluminum parts, the powder-coat finish is electro-statically painted to provide scratch and corrosion resistance plus lasting protection from the elements.



Polished Aluminum – Constructed of #5052 aluminum and polished, these accessories have similar performance characteristics to our diamond plate product; without the treadbrite texture. All Polished Aluminum parts are considered a special order.



Smooth Black Steel – Available for most parts made of aluminum with the added strength and durability of steel. Products constructed of 12-gauge HRPO steel are black powder-coated to prevent rust and corrosion.



Brushed Aluminum – Constructed of #5052 aluminum, these accessories have similar performance characteristics to our diamond plate and polished product, but with a brushed exterior finish. This finish is only available for a limited number of products.



HD Aluminum – Constructed of 3/16" thick unfinished aluminum, this keeps the overall weight of our armor at a minimum.



Hammertone Gray – MIG-welded, jig-built spring shackles and greaseable leaf spring shackle kits come in a hammertone gray finish.



Gold Zinc – MIG-welded, jig-built spring shackles and greaseable leaf spring shackle kits come in a gold zinc finish.

UNIVERSAL - What does it mean?

Universal Parts are manufactured in order to fit the widest possible range of vehicles based on industry standard measurements. Warrior goes to great length to ensure that our Universal Parts will fit the majority of Trucks, SUVs, and Jeeps by offering multiple sizes, styles, and fitment options. Universal Parts are not designed to be installed on any specific vehicle; therefore, individuals are occasionally required to adapt, adjust, or tailor the product to fit their exact application.





JEEP

BUMPERS	10 - 15
RACK SYSTEMS	16 - 23
DOORS	24 - 31
TUBE FENDER FLARES	32 - 33
BODY ARMOR	34 - 41

JEEP (CONT.)

BRACKETS	42 - 47
SIDE STEPS	48 - 53
TOWING	54 - 57
SUSPENSION	58 - 67
LIGHTING	68 - 69

JEEP (CONT.)

INTERIOR ACCESSORIES	70 - 75
UNDERCARRIAGE	76 - 79
HOODLIFT	80 - 81
FLEX ARMOR	82 - 85

NEW PRODUCT SHOWCASE

NEW PRODUCT SHOWCASE	86 - 87
----------------------	---------

JEEP





Body Armor
[Pages 34 - 41](#)

Flex Armor
[Pages 82 - 85](#)



Rack Systems
[Pages 16 - 23](#)

Mounting Brackets
[Pages 42 - 47](#)



Side Steps
[Pages 48 - 53](#)

Suspension
[Pages 58 - 67](#)



Lighting
[Page 68 - 69](#)

Rear Bumpers
[Pages 10 - 15](#)

Tube Flares
[Page 32 - 33](#)

Front Bumpers
[Pages 10 - 15](#)



Adventure Tube Doors
[Page 24 - 31](#)



Adventure Tube Doors Accessories [Page 82 - 85](#)



BUMPERS



ROCK CRAWLER BUMPERS W/ WINCH MOUNT

Constructed of the same materials and finish as the rest of our Rock Crawler series bumpers, these front winch bumpers can accommodate any self-recovery winch with a standard 4 1/2" x 10" bolt pattern.

Please note that D-Rings / Clevis Shackles are sold separately. See Page 56 for D-Rings / Clevis Shackles.



STUBBY BUMPERS

Stubby Bumpers are built from the original 570-series Rock Crawler models, but have been shortened to 45" to fit within the vehicle's wheel width. This reduction maximizes tire clearance while minimizing weight. A rounded underside provides greater entry and exit clearance. The bumper is compatible with most universal winch plates and popular sway-bar systems. Options include D-Ring Mounts and/or a 1 1/2" tubing Brush Guard. Please note that D-Rings / Clevis Shackles are sold separately.



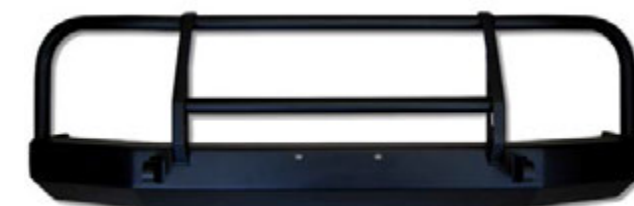
ROCK CRAWLER BUMPERS

Our heavy-duty Rock Crawler Bumpers are designed for the off-road enthusiast who wants rugged construction and a rounded underside to provide greater entry and exit clearance. Some rear bumpers have an optional light-duty 2" receiver hitch built in and most are compatible with OEM tow packages. Powder-coated black for lasting durability and good looks. Constructed from high quality steel. Please note that D-Rings / Clevis Shackles and LED Lights are sold separately.



ROCK CRAWLER BUMPERS W/ BRUSH GUARD

The Brush Guard is a one-piece welded guard that is formed from 1" or 1-1/2" round steel tubing, and provides protection from shrubbery when off-roading to the front grill and headlights. The 1-1/2" guards accommodate an optional light tab accessory (#59003).



#56061



#56051



Model	Year	Description	Front	Rear
Rock Crawler Bumpers				
CJ5, CJ7, CJ8	76 - 86	Bumper w/ Receiver	-	580
CJ5, CJ7, CJ8	76 - 86	Bumper Only	570	-
CJ5, CJ7, CJ8	76 - 86	Bumper w/ D-Ring Mounts	571	-
CJ5, CJ7, CJ8	76 - 86	Bumper w/ D-Ring Mounts & Receiver	-	577
YJ Wrangler	87 - 96	Bumper w/ Receiver	-	575
YJ Wrangler	87 - 96	Bumper Only	570	-
YJ Wrangler	87 - 96	Bumper w/ D-Ring Mounts	571	-
YJ Wrangler	87 - 96	Bumper w/ D-Ring Mounts & Receiver	-	576
TJ Wrangler & LJ Unlimited	97 - 06	Bumper w/ Receiver	-	575
TJ Wrangler & LJ Unlimited	97 - 06	Bumper Only	570	-
TJ Wrangler & LJ Unlimited	97 - 06	Bumper w/ D-Ring Mounts	571	-
TJ Wrangler & LJ Unlimited	97 - 06	Bumper w/ D-Ring Mounts & Receiver	-	576
JK Wrangler & Unlimited	07 - 16	Bumper Only	590	592
JK Wrangler & Unlimited	07 - 16	Bumper w/ D-Ring Mounts	591	593
Cherokee	84 - 96	Bumper Only	560	562
Cherokee	84 - 96	Bumper w/ D-Ring Mounts	561	563
Cherokee	84 - 01	Bumper w/ LED Cutouts	-	662
Cherokee	84 - 01	Bumper w/ LED Cutouts & D-Ring Mounts	-	663
Cherokee	97 - 01	Bumper Only	560	567
Cherokee	97 - 01	Bumper w/ D-Ring Mounts	561	568

Rock Crawler Front Bumpers w/ Brush Guards				
CJ7, YJ, TJ, & LJ	76 - 06	Rock Crawler w/ Brush Guard	57050	-
CJ7, YJ, TJ, & LJ	76 - 06	Rock Crawler w/ Brush Guard & D-Ring Mounts	57051	-
CJ7, YJ, TJ, & LJ	76 - 06	Stubby Bumper w/ Brush Guard	57058	-
CJ7, YJ, TJ, & LJ	76 - 06	Stubby Bumper w/ Brush Guard & D-Ring Mounts	57059	-
JK Wrangler & Unlimited	07 - 16	Rock Crawler w/ Brush Guard	59050	-
JK Wrangler & Unlimited	07 - 16	Rock Crawler w/ Brush Guard & D-Ring Mounts	59051	-
Cherokee	84 - 01	Rock Crawler w/ Brush Guard	56050	-
Cherokee	84 - 01	Rock Crawler w/ Brush Guard & D-Ring Mounts	56051	-
Cherokee	84 - 01	Rock Crawler w/ Brush Guard (Option 2)	56060	-
Cherokee	84 - 01	Rock Crawler w/ Brush Guard & D-Ring Mounts (Option 2)	56061	-

Model	Year	Description	Part #
Rock Crawler Front Bumpers w/ Winch Mount			
JK Wrangler & Unlimited	07 - 16	Rock Crawler w/ Winch Mount	595
JK Wrangler & Unlimited	07 - 16	Rock Crawler w/ Winch Mount & D-Ring Mounts	596
JK Wrangler & Unlimited	07 - 16	Stubby Winch Mount w/ D-Ring Mounts	597
JK Wrangler & Unlimited	07 - 16	Rock Crawler w/ Winch Mount & Brush Guard	59055
JK Wrangler & Unlimited	07 - 16	Rock Crawler w/ Winch Mount, Brush Guard & D-Ring Mounts	59056
JK Wrangler & Unlimited	07 - 16	Stubby w/ Winch Mount, 3" Brush Guard & D-Ring Mounts	59730
JK Wrangler & Unlimited	07 - 16	Stubby w/ Winch Mount, Pre-Runner Brush Guard & D-Ring Mounts	59750
JK Wrangler & Unlimited	07 - 16	Stubby w/ Winch Mount, Stinger Brush Guard & D-Ring Mounts	59755
JK Wrangler & Unlimited	07 - 16	Mid-Width Winch Mount w/ D-Ring Mounts	598
JK Wrangler & Unlimited	07 - 16	Mid-Width w/ Winch Mount, 3" Brush Guard & D-Ring Mounts	59830
JK Wrangler & Unlimited	07 - 16	Mid-Width w/ Winch Mount, Pre-Runner Brush Guard & D-Ring Mounts	59850
JK Wrangler & Unlimited	07 - 16	Full-Width Winch Mount w/ D-Ring Mounts	599
JK Wrangler & Unlimited	07 - 16	Full-Width w/ Winch Mount, 3" Brush Guard & D-Ring Mounts	59930
JK Wrangler & Unlimited	07 - 16	Full-Width w/ Winch Mount, Pre-Runner Brush Guard & D-Ring Mounts	59950
Cherokee	84 - 01	Rock Crawler w/ Winch Mount & Brush Guard	56054
Cherokee	84 - 01	Rock Crawler w/ Winch Mount, Brush Guard & D-Ring Mounts	56055
Cherokee	84 - 01	Rock Crawler w/ Winch Mount	564
Cherokee	84 - 01	Rock Crawler w/ Winch Mount & D-Ring Mounts	565
Cherokee	84 - 01	Bumper Reinforcement Brackets	566

WINCH PLATES

Our winch mounting plate will fit most Aftermarket and factory bumper systems and features a lower mount point to clear the front grille as much as possible. It can accommodate most winches with a standard 4 1/2" x 10" bolt pattern.



ALUMI-ROLLERS

Designed to replace the steel rollers in your winches existing roller fairlead, Alumi-Rollers are CNC-machined from solid aluminum to a smooth finish. This smooth roller is ideal for use with a synthetic winch line upgrade. Rollers are available in clear, red or black anodized finishes.



BRUSH GUARDS

Pre-Runner and Stinger Brush Guards are built with an aggressive, angled look and have optional side support struts for added styling and strength. Applications available to fit JK Stubby Bumper and shallow mount to fit most rock crawler-style bumpers. Center hoop only applications available as well (these versions have no side struts). The Warrior Products Universal Brush Guard is designed to attach to any flat surface front bumper. Manufactured using high quality steel, this one-piece welded guard is formed from 1 1/2" round steel tubing and provides protection from shrubbery to the front grill and headlights while off-roading. The guard accommodates an optional light tab accessory (#59003). **Please note that D-Rings / Clevis Shackles are sold separately.**



STANDARD BUMPERS

Our bolt-on Standard Bumpers are designed to accent factory styling cues and to add an OE look to the vehicle. Most rear bumpers come with or without a Class III receiver hitch with a 2" standard opening and is an ideal solution for light-weight towing needs. Bumpers are available in black powder-coat and offer lasting durability.



DOUBLE TUBE BUMPERS

For added styling and looks, Warrior Products makes Double Tube Bumpers for Jeep applications from CJ-5 to Wranglers 87-06. These bumpers are manufactured using high quality 3" steel tubing and are available in black powder-coat finish for durability.



STINGER WINCH MOUNT

Stinger & Grille Hoop Winch Mounts offer a combination of a stinger-style brush guard with a protective grille hoop and is combined with an integrated winch mounting plate. While this mount is specific to certain vehicles, it should be compatible with nearly all bumpers that are flat at the top edge of the frame.



Model	Year	Description	Front Part #	Rear Part #
Brush Guards				
JK Wrangler & Unlimited	07 - 16	Pre-Runner for 597 Stubby Bumper	59010	-
JK Wrangler & Unlimited	07 - 16	Stinger for 597 Stubby Bumper	59015	-
Universal	All	Pre-Runner Brush Guard (shallow depth)	59011	-
Universal	All	Pre-Runner Center Hoop only	59012	-
Universal	All	Pre-Runner Brush Guard	59013	-
Universal	All	Stinger Brush Guard (shallow depth)	59016	-
Universal	All	Stinger Center Hoop only	59017	-
Universal	All	3" Brush Guard	59025	-
Universal	All	Brush Guard (Standard Front)	59000	-

Standard Bumpers				
CJ5, CJ7, CJ8	76 - 86	Bumper w/ Receiver	490	520
CJ5, CJ7, CJ8	76 - 86	Bumper Only	485	515
CJ5, CJ7, CJ8	76 - 86	Bumper Only - Chrome	485C	515C
YJ Wrangler	87 - 96	Bumper w/ Receiver	535	510
YJ Wrangler	87 - 96	Bumper Only	540	505
YJ Wrangler	87 - 96	Bumper Only - Chrome	540C	505C
TJ Wrangler & LJ Unlimited	97 - 06	Bumper w/ Receiver	525	495
TJ Wrangler & LJ Unlimited	97 - 06	Bumper Only	530	500
TJ Wrangler & LJ Unlimited	97 - 06	Bumper Only - Chrome	530C	500C

Double Tube Bumpers				
CJ5, CJ7, CJ8	76 - 86	Bumper Only	48510	51510
YJ Wrangler	87 - 96	Bumper Only	53010	50510
TJ Wrangler & LJ Unlimited	97 - 06	Bumper Only	53010	50010

Model	Year	Description	Part #
Stubby Front Bumpers			
CJ, YJ, TJ, LJ	76 - 06	Stubby Bumper Only	578
CJ, YJ, TJ, LJ	76 - 06	Stubby Bumper with D-Ring Mounts	579

Winch Plates				
TJ Wrangler & LJ Unlimited	97 - 06	Winch Plate - 4 1/2" x 10" bolt pattern		572
YJ Wrangler	87 - 96	Winch Plate - 4 1/2" x 10" bolt pattern		573

Stinger Winch Mounts				
YJ Wrangler	87 - 96	Stinger & Grille Hoop Winch Mount		59020

Model	Year	Size	Clear Anodized	Red Anodized	Black Anodized
Alumi Rollers					
Universal	-	7.875" Wide (7-7/8") - Set of 4 Rollers	2300	2301	2302
Universal	-	7.5" Wide (7 1/2") - Set of 4 Rollers	2310	2311	2312
Universal	-	8" Wide - Set of 4 Rollers	2320	2321	2322

RACK SYSTEMS



RENEGADE RACK

The innovative Renegade Rack System is designed for the JK Wrangler fitted with factory or aftermarket bumpers. The Renegade Rack System boasts a design that allows one person to easily fold the rack out of the way in order to install or remove a soft or hard top. Installation requires no drilling or cutting of any kind - this rack is completely bolt-on. Optionally, the 4-door model can be ordered with an interchangeable rack extension that expands the basket to the full length of the roof. Load Capacity: 650 lbs Highway / 350 lbs Off-Road. Additional accessories include: Air Dam, Off-Road Jack Mount, Spare Tire Carrier, and Shovel & Axe Mount.



SHOVEL & AXE BRACKETS

The Shovel & Axe Mount brackets are designed to fit our Safari Rack baskets and carry a standard shovel and/or axe atop the vehicle. They are constructed of steel and powder-coated black for good looks and lasting durability.



SPARE TIRE BRACKET

Our universal Spare Tire Mount can be installed on the Safari Rack baskets or any stout surface; i.e. the floor of the Jeep's rear tub when the back seat is removed. The bracket and handle are constructed of steel. Its removable handle is zinc-plated while its base is powder-coated black for good looks and lasting durability.



OFF-ROAD JACK BRACKETS

These mounts allow the popular Off-Road Jack product to be mounted to the side of our Safari Rack's cargo basket or to any flat surface 3" or taller. These brackets are powder-coated in a durable black finish and are made of steel.



Model	Year	Description	Part #
Renegade Rack System			
JK Wrangler Unlimited	07 - 16	4-Door Renegade Rack	885
JK Wrangler	07 - 16	2-Door Renegade Rack	887
JK Wrangler Unlimited	07 - 16	4-Door Renegade Rack Extended Rear Basket Section	890
Rack System Fit	Description	Size	Part #
Shovel & Axe Brackets			
Safari Series	Shovel & Axe Brackets	-	841
Renegade Rack	Shovel & Axe Brackets	-	891
Spare Tire Bracket			
Platform Rack	Universal Tire Bracket (No Drill)	8" Spread	809
Safari Series	Universal Tire Bracket	9" Spread	819
Renegade Rack	Universal Tire Bracket	-	829
Renegade Rack	Universal Tire Bracket (No Drill)	-	808
Safari Series	Universal Tire Bracket	8" Spread	839
Off-Road Jack Brackets			
Adventure & Safari Series	Off-Road Jack Brackets	-	840
Renegade Rack System	Off-Road Jack Brackets	-	889

WARRIOR SAFARI RACK SYSTEMS

Perhaps the most versatile rack system on the market today, the Warrior Products Safari Rack system offers multiple configurations and a full line of accessories to accommodate your adventure lifestyle. Designed as both individual components and a complete system, the Safari Sport Rack allows the utmost in cargo-carrying flexibility. The entire system breaks down to a remarkably small package for ease of storage when not in use.



SAFARI WATER CRAFT RACKS

This all-purpose crossbar system (includes front and rear) will handle a variety of loads up to 175 lbs from small watercraft to a load of lumber. Each crossbar is ruggedly built from 1" steel tubing and powder-coated for rust protection. To put a soft top down, simply pull the snapper pins to remove the crossbars. The crossbars also have tabs for lights and provisions to add a cargo basket at a later date.



SAFARI LIGHT BARS

Safari Light Bars attach to the front and rear of your Jeep and supply four light mounts in the front and two in the rear. The combination of front and rear Safari Light Bars can also be used to transport watercraft such as canoes or kayaks. These light bars feature snapper pins which allow you to quickly and easily remove them from the vehicle without tools. Light bars are constructed from high-quality steel and are powder-coated for durability.



Model	Year	Description	Part #
Safari Water Craft Racks			
CJ7 & YJ Wrangler	76 - 96	Safari Water Craft Rack	848
TJ Wrangler & LJ Unlimited	97 - 06	Safari Water Craft Rack	871
JK Wrangler & Unlimited	07 - 16	Safari Water Craft Rack	878
Safari Light Bars			
CJ7 & YJ Wrangler	76 - 96	Safari Light Bar - Front	844
CJ7, YJ & TJ Wrangler	76 - 06	Safari Light Bar - Rear	843
TJ Wrangler & LJ Unlimited	97 - 06	Safari Light Bar - Front	872
JK Wrangler & Unlimited	07 - 16	Safari Light Bar - Front	869
JK Wrangler & Unlimited	07 - 16	Safari Light Bar - Rear	870

SAFARI SPORT RACKS

The ultimate in sport racks, the Safari Sport Rack is a semi-permanent modular system. As its base, two independent crossbars mount at the vehicle's windshield and rear tub areas as supports for lights, small watercraft and/or a cargo basket. Quick release snapper pin disconnects on each crossbar leg allows them to be easily removed from the vehicle (not available for the Cherokee application). When a cargo basket is not affixed, the crossbars create a canoe and/or sailboard carrier. As light supports, the crossbars have tabs for mounting four in the front and two in the back. This rack has a carrying capacity of 400 lbs highway or 150 lbs off-road and is powder-coated black to prevent corrosion.



SAFARI ROOF RACKS

The original Safari Roof Rack is the perfect year-round roof-top carrier for all of your gear with a weight capacity of 400 lbs highway and 150 lbs off-road. Although it is a permanent mount design, it still allows the removal of a soft or hardtop without removing the rack. It is built of steel and powder-coated black for lasting durability. For Cherokees, the basket can mount by specially designed footings to the rain gutters.

Note: For a complete line of complementary rack accessories please refer to page 18.



Model	Year	Description	Size	Part #
Safari Sport Racks				
CJ7 & YJ Wrangler	76 - 96	Safari Sport Rack	45" x 55" x 5"	849
TJ Wrangler	97 - 06	Safari Sport Rack	45" x 55" x 5"	873
LJ Unlimited	04 - 06	Safari Sport Rack - Truck Freight	45" x 69" x 5"	875
LJ Unlimited	04 - 06	Basket Only - Truck Freight	45" x 69" x 5"	876
JK Wrangler	07 - 16	Safari Sport Rack - Truck Freight	47" x 67" x 5"	877
JK Wrangler	07 - 16	Basket Only - One Piece Basket/Truck Freight	47" x 55" x 5"	880
JK Unlimited	07 - 16	Safari Sport Rack - Truck Freight	47" x 75" x 5"	879
JK Unlimited	07 - 16	Basket Only - One Piece Basket/Truck Freight	47" x 75" x 5"	881
YJ & TJ Wrangler	76 - 06	Basket Only - Two piece break down	45" x 55" x 5"	874
Cherokee	84 - 01	Safari Sport Rack (Breakdown basket with gutter mounts)	45" x 55" x 5"	842
Safari Roof Racks				
CJ5	55 - 75	Safari Rack	45" x 45" x 5"	857
CJ5	76 - 83	Safari Rack	45" x 45" x 5"	857A
CJ7 & YJ Wrangler	76 - 96	Safari Rack (soft top can fold)	45" x 55" x 5"	856
TJ Wrangler	97 - 06	Safari Rack (soft top cannot fold)	45" x 55" x 5"	858
Universal	-	Safari Basket Only (one piece construction)	45" x 45" x 5"	854
Universal	-	Safari Basket Only (one piece construction)	45" x 55" x 5"	855
Cherokee	84 - 01	Safari Rack w/ Gutter Mounts	45" x 55" x 5"	835
Cherokee	84 - 01	Safari Rack Gutter Mounts Only	-	835B
Platform Roof Rack				
Universal	-	Platform Roof Rack (Platform Only - No Mounts)	51-1/2" x 51-1/4"	4800

ADVENTURE RACKS

Our Adventure Rack adds additional storage to vehicle's with limited storage capacity. Positioned above the vehicle's spare tire, this rack has a weight capacity of 100 lbs with no reinforcement to tailgate and 200lbs with 920D series Tailgate Cover installed. It is ideal for camping equipment, coolers or anything else you need along the trail. The rack comes standard with brackets for two 5-gallon gas/water cans.

Note: The universal model fits most CJ vehicles with minor modifications. The JK Wrangler model has a 50 lb load capacity, so it is strongly recommended to be used with the #S920D-1 Tailgate Cover for additional support and protection.



CARGO HITCH RACKS

The Cargo Hitch Rack provides another option to pile on extra gear. It can be easily mounted to and removed from any 2" receiver hitch. Two sizes are available to meet your needs. These applications are also available in an 8" lift to provide extra ground clearance. The Cargo Hitch Rack provides added capacity to a vehicle with limited space and is a great complement to our Adventure and Safari Rack systems.

Note: Weight capacity equals the specified tongue capacity of the 2" receiver.



Model	Year	Description	Size	Part #
Adventure Racks				
CJ7	All	Standard Rack for CJ7 w/ Swing Tire Carrier	5" x 20-1/4" x 36-1/4"	832
CJ7	All	Universal Jeep Application for most CJ's	5" x 20-1/4" x 36-1/4"	832
YJ Wrangler	87 - 96	Wranglers with or without Fixed Mount Tire Carrier	5" x 20-1/4" x 36-1/4"	833
TJ Wrangler & LJ Unlimited	97 - 06	Wranglers with or without Fixed Mount Tire Carrier	5" x 20-1/4" x 36-1/4"	834
JK Wrangler & Unlimited	07 - 16	Wranglers with or without Fixed Mount Tire Carrier	5" x 19" x 42-1/2"	831

Model	Year	Description	Size	Part #
Cargo Hitch Rack				
Universal 2" Receivers	-	36" Cargo Hitch Rack	36" x 17" x 5"	836
Universal 2" Receivers	-	46" Cargo Hitch Rack	46" x 17" x 5"	846
Universal 2" Receivers	-	36" Cargo Hitch Rack w/ 8" Rise	36" x 17" x 5"	837
Universal 2" Receivers	-	46" Cargo Hitch Rack w/ 8" Rise	46" x 17" x 5"	847

OUTBACK ROOF RACKS AND MOUNTING KITS

Outback Roof Racks are a universal cargo basket intended to be roof mounted and are sold in a variety of dimensions. These baskets feature integrated mounting buckets which give the installer easy to use pre-drilled mounting locations. The Outback Rack Mount Kits offer a direct fit to Outback Roof Racks and offer a simple way to mount the rack directly to the roof. Drilling into the roof is required to install these mounts. All Outback Racks are one-piece and mounting kits are sold separately.

Note: Outback Racks are a special order item and once ordered cannot be cancelled or returned.



AIR DAMS

For a quieter, more aerodynamic ride, the Air Dam is designed to redirect wind over and above any of our popular rack series; e.g. Safari. It is constructed of 12-gauge steel for durability and powder-coated black for good looks and durability.



INTERIOR CARGO TRAYS

The Interior Cargo Tray is a great storage solution for the TJ Wrangler. The tray has a 100 lb carrying capacity and is available in either a sliding or fixed-mount configuration. The sliding version pulls outward beyond the tailgate to make loading and unloading a breeze. Both cargo trays operate with the rear seat folded forward, down or removed altogether. The entire unit may be easily removed when not needed. It is constructed from heavy-duty steel and powder-coated black.



Model	Year	Description	Rack Part #	Mounting Part #
Outback Roof Racks & Mounting Kits				
40" x 50" x 5"	-	Outback Roof Rack	81000	43040 (4-pc)
40" x 60" x 5"	-	Outback Roof Rack	81100	43060 (6-pc)
45" x 45" x 5"	-	Outback Roof Rack	81240	43040 (4-pc)
45" x 55" x 5"	-	Outback Roof Rack	81340	43060 (6-pc)
55" x 55" x 5"	-	Outback Roof Rack	81640	43060 (6-pc)
55" x 65" x 5"	-	Outback Roof Rack	81740	43060 (6-pc)
60" x 80" x 5"	-	Outback Roof Rack	81840	43080 (8-pc)

Model	Year	Description	Part #	Size
Air Dams				
Safari Roof & Sport	-	Front Air Dam	850	6" x 44"
Safari Roof & Sport	-	Extended Front Air Dam for Racks with Light Tabs	863	6" x 44"
Renegade Rack System	-	Front Air Dam	888	6" x 48"

Model	Year	Description	Part #	Size
Interior Cargo Trays				
YJ & TJ Wrangler	87 - 02	Interior Cargo Tray - Sliding	91650	5" x 22" x 41"
YJ & TJ Wrangler	87 - 02	Interior Cargo Tray - Fixed	91651	5" x 22" x 41"



Protecting Your Adventure Lifestyle

Renegade

SMITTYBILT

Yukon

for 4x4s

MG

WHEELS

GRABBER

GENERAL



DOORS



ADVENTURE TUBE DOORS

Designed to replace the vehicle's full or half doors, Adventure Tube Doors provide additional protection to front seat occupants while off-roading. These doors mount into existing door hinges and come with our in-house manufactured deluxe paddle handles; depending on the vehicle, these paddle handles may be locking. These heavy-duty doors are ready for use and are powder-coated black to provide a durable finish.

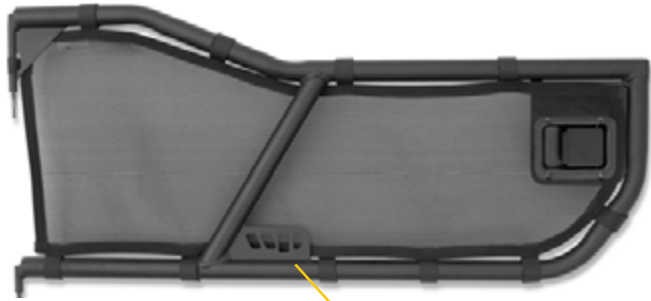


Model	Year	Description	Part #
Adventure Tube Doors			
CJ5	55 - 75	Adventure Tube Door w/ Paddle Handles (Striker Included)	90854
CJ5	76 - 83	Adventure Tube Door w/ Paddle Handles (Striker Included)	90855
CJ7	76 - 86	Adventure Tube Door w/ Paddle Handles (Use Factory Striker)	90771
YJ Wrangler	87 - 96	Adventure Tube Door w/ Paddle Handles (Use Factory Striker)	90771
TJ Wrangler & LJ Unlimited	97 - 06	Economy Adventure Tube Door w/ Pin Latch	90770
TJ Wrangler & LJ Unlimited	97 - 06	Adventure Tube Door w/ Paddle Handles (Use Factory Striker)	90772
JK Wrangler & Unlimited	07 - 16	Front Adventure Tube Door Only w/ Paddle Handles (Use Factory Striker)	90773
JK Unlimited	07 - 16	Rear Adventure Tube Door Only w/ Paddle Handles (Use Factory Striker)	90774
Cherokee	84 - 96	Front Adventure Tube Door Only w/ Paddle Handles (Use Factory Striker) - 4 Door Model	90783
Cherokee	84 - 96	Rear Adventure Tube Door Only w/ Paddle Handles (Use Factory Striker) - 4 Door Model	90784
Cherokee	84 - 96	Front Adventure Tube Door w/ Paddle Handles - 2 Door Model (Use Factory Striker)	90850
Cherokee	97 - 01	Front Adventure Tube Door w/ Paddle Handles - 4 Door Model (Use Factory Striker)	90851
Cherokee	97 - 01	Rear Adventure Tube Door w/ Paddle Handles - 4 Door Model (Use Factory Striker)	90852



ADVENTURE TUBE DOOR MESH KITS

The mesh kits affix to the Adventure Tube Doors to help deter debris and wind from entering the vehicle. In addition, they allow the driver to see obstacles through the door and provide a small amount of shade in the hot summer months.



ADVENTURE TUBE DOOR PADDING KITS

The padding kits also affix to the Adventure Tube Doors and not only provide functionality but stylish good looks too. The padding kits feature a zippered pocket and are available in a host of colors to complement any vehicle.



Model	Year	Description	Part #
Adventure Tube Door Mesh Kits			
CJ5	55 - 83	Door Mesh Cover	90860
CJ7, YJ, TJ, LJ	76 - 06	Door Mesh Cover	90775
JK Wrangler & Unlimited	07 - 16	Front Door Mesh Cover	90776
JK Unlimited	07 - 16	Rear Door Mesh Cover	90777
Cherokee	84 - 01	Front Door Mesh Cover 4 - Door	90778
Cherokee	84 - 96	Rear Door Mesh Cover 4 - Door	90779
Cherokee	84 - 96	Front Door Mesh Cover 2 - Door	90875
Cherokee	97 - 01	Rear Door Mesh Cover 4 - Door	90876

Model	Year	Description	Black	Camo
Adventure Tube Door Padding Kits				
CJ5	55 - 83	Door Padding Kit	90863	90864
CJ7, YJ, TJ, LJ	76 - 06	Door Padding Kit	90789	90790
JK Wrangler & Unlimited	07 - 16	Front Door Padding Kit	90792	90793
JK Unlimited	07 - 16	Rear Door Padding Kit	90795	90796
Cherokee 4 - Door	84 - 01	Front Door Padding Kit	90781	90782
Cherokee 4 - Door	84 - 01	Rear Door Padding Kit	90786	90787
Cherokee 2 - Door	84 - 96	Door Padding Kit	90881	90882

Model	Year	Description	Part #
Replacement Paddle Handles			
CJ & YJ Wrangler	55 - 96	Non-Locking Replacement Paddle Handles (Pair)	9016
Cherokee	84 - 96	Non-Locking Replacement Paddle Handles (Pair)	9017
Cherokee	97 - 01	Non-Locking Replacement Paddle Handles (Pair)	9018
TJ Wrangler	97 - 06	Non-Locking Replacement Paddle Handles (Pair)	9015
TJ Wrangler	97 - 06	Locking Replacement Paddle Handles w/ Keys (Pair)	9014
JK Wrangler	07 - 16	Non-Locking Replacement Paddle Handles (Pair)	9015
JK Wrangler	07 - 16	Locking Replacement Paddle Handles w/ Keys (Pair)	9014

Paddle Handle Snubber Kit			
JK Wrangler & Unlimited	07 - 16	Paddle Handle Snubber Kit	90764

HALF DOORS

To complement the balance of the Warrior Products body armor accessories, our Half Door panels come with the proper paddle handle, mounting hardware, and a stiffening brace to assist in door rigidity. Weather stripping is included to help prevent rattling. Sold in pairs.



FACTORY DOOR PANEL INSERTS

Whether replacing a damaged panel or just improving the look of your Jeep, Warrior Products builds inner door panels for lower half and full doors. As expected, these replacement Factory Door Panel Inserts match other diamond plate accessories.



ADVENTURE TUBE DOOR MIRROR MOUNTS

Mirror mounts are a permanently-mounted solution for your Adventure Tube Doors so you do not have to relocate the factory mirrors once the factory doors are removed. Available in two applications, with or without mirrors, these brackets mount to the Adventure Tube Door frame at the upper hinge support. The 1418 & 1518 versions accommodate any OEM and/or aftermarket mirror designed for the 97-02 TJ Wrangler. The 1419 & 1519 versions are a proprietary design of Warrior Products. These brackets come with all of the necessary mounting hardware for a complete installation and are constructed of 11-gauge steel.



Model	Year	Description	Part #			
			Diamond Plate	Black Diamond Plate	Brushed Aluminum	Smooth Black Steel
Half Doors						
CJ5	55 - 75	Door Pair w/ Paddle Handles (must use Warrior hinges)	902DOOR	902DOORPC	-	S902DOOR
CJ5	76 - 83	Door Pair w/ Paddle Handles	905DOOR	905DOORPC	-	S905DOOR
CJ7	76 - 79	Door Pair w/ Paddle Handles (must modify existing striker)	904DOOR	904DOORPC	-	S904DOOR
CJ7 & YJ Wrangler	80 - 96	Door Pair w/ Paddle Handles	907DOOR	907DOORPC	-	S907DOOR
CJ8	81 - 86	Half Door Pair w/ Paddle Handles (must modify existing striker)	907DOOR	907DOORPC	-	S907DOOR
TJ Wrangler & LJ Unlimited	97 - 06	Door Pair w/ Paddle Handles	916DOOR	916DOORPC	-	S916DOOR
JK Wrangler & Unlimited	07 - 16	Front Door Pair w/ Paddle Handles	920DOOR	920DOORPC	-	S920DOOR
JK Unlimited	07 - 16	Rear Door Pair w/ Paddle Handles	921DOOR	921DOORPC	-	S921DOOR

Factory Door Panel Inserts						
CJ7 & YJ Wrangler	76 - 96	Full Door Inserts	90750	90750PC	60750	S90750
CJ7 & YJ Wrangler	76 - 96	Half Door Inserts	90755	90755PC	60755	S90755

Model	Year	Description	Part #
Adventure Tube Door Mirror Mounts			
CJ, YJ, TJ, LJ	55 - 06	Mirror Mount Kit without Mirrors	1418 *
CJ, YJ, TJ, LJ	55 - 06	Mirror Mount Kit w/ Mirrors	1419
XJ Cherokee	84 - 01	Mirror Mount Kit without Mirrors	1518 *
XJ Cherokee	84 - 01	Mirror Mount Kit w/ Mirrors	1519
JK Wrangler & Unlimited	07 - 16	Mirror Mount Kit without Mirrors	1518 *
JK Wrangler & Unlimited	07 - 16	Mirror Mount Kit w/ Mirrors	1519

* For parts 1418 & 1518: This kit requires the purchase of any 97-02 Early Model Jeep TJ Wrangler Mirror Set.

NOTE: All Brushed Aluminum are considered a special order. This means that they are not an inventoried part number and will be subject to an estimated 4 week waiting period. Special orders cannot be cancelled or returned. Special order items will still carry the standard Warrior Products warranty.



SOFT UPPER HALF DOOR BRACKETS

These mounting brackets are receptacles that allow the frame pins from upper soft doors to fit atop the Warrior Products Half Doors. The kit includes six mounting receptacles for a pair of soft upper half doors, three per side.



FACTORY REPLACEMENT DOOR HANDLES

These sturdy steel grab handles provide a perfect replacement for the factory door handles. They are made from 7/8" tubular steel and come in pairs. Handles are available in black powder-coat or a bright silver zinc finish.



LIMITING STRAPS

When the factory doors are removed, its limiting strap (responsible for limiting the amount of swing available when the door fully opens against the vehicle) is useless because it is attached to the door. Our limiting straps replace this part which helps limit the Adventure Door from hitting the vehicle when fully opened.



UNIVERSAL GRAB HANDLES

Our steel handles can mount anywhere you need an additional handhold. Handles are sold individually and made from 1" tubular steel. They are available in three handy sizes and two finishes: black powder-coat or bright silver zinc.



Model	Year	Description	Part #	
			Black	Silver Zinc
Soft Upper Half Door Brackets				
YJ Wrangler	87 - 96	Half door window bracket, factory uppers only	1525	-
TJ Wrangler & LJ Unlimited	97 - 06	Half door window bracket, factory uppers only	1520	-
Factory Replacement Door Handles				
CJ & YJ Wrangler	80 - 96	Replacement Door Handles - Interior	90756	90757
Limiting Straps				
Custom Fit	-	HD 1.5" Wide Door Limiting Strap Kit (Each)	65000	-
Custom Fit	-	HD 1.5" Wide Door Limiting Strap Kit (Pair)	65001	-
CJ5	55 - 75	Door Limiting Strap Kit	90800	-
CJ7, YJ, TJ, & LJ	76 - 06	Door Limiting Strap Kit	90797	-
JK Wrangler & Unlimited	07 - 16	Front Door Limiting Strap Kit	90798	-
JK Wrangler & Unlimited	07 - 16	Rear Door Limiting Strap Kit	90799	-
Cherokee	84 - 01	Front/Rear Door Limiting Strap Kit	90812	-
Universal Grab Handles				
CJ Wrangler	55 - 83	CJ Wrangler Dashboard Grab Handle	90425	90426
Universal	-	Universal Grab Handles - 8"	90428	90429
Universal	-	Universal Grab Handles - 10"	90430	90431
Universal	-	Universal Grab Handles - 14"	90435	90436



TUBE FENDER FLARES



TUBE FLARES

Designed to replace the original flares, Tube Flares mount into existing fender wells with minimal drilling. Constructed of 1 1/2" tubing, these beefy frames are a perfect complement to our Adventure Tube Doors. The top plate is available in four finishes to match other Warrior Body Armor: diamond plate, black diamond plate, smooth black steel, or raw uncoated steel. An optional LED signal light can be incorporated into the leading edge of the front flare and complete with wiring harness for an easy installation. Lights sold separately.



TUBE FLARE SIDE MARKER LIGHT KIT

Designed for use with our Steel Tube Flares, the 2" Side Marker LED Light Kit contains two round amber lights, two mounting grommets and two wiring pigtails. Our LED lights carry a lifetime warranty against manufacturing defects.



Model	Year	Description	Diamond Plate	Black Diamond Plate	Smooth Black Steel	Uncoated Steel
Tube Flares						
YJ Wrangler	87 - 96	Tube Flares - Front Pair (4" wide)	7321	7321PC	S7321	S7321-RAW
YJ Wrangler	87 - 96	Tube Flares - Rear Pair (4" wide)	7322	7322PC	S7322	S7322-RAW
YJ Wrangler	87 - 96	Tube Flares - Front Pair (6.5" wide)	7323	7323PC	S7323	S7323-RAW
YJ Wrangler	87 - 96	Tube Flares - Rear Pair (6.5" wide)	7324	7324PC	S7324	S7324-RAW
TJ Wrangler & LJ Unlimited	97 - 06	Tube Flares - Front Pair (4" wide)	7301	7301PC	S7301	S7301-RAW
TJ Wrangler & LJ Unlimited	97 - 06	Tube Flares - Rear Pair (4" wide)	7302	7302PC	S7302	S7302-RAW
TJ Wrangler & LJ Unlimited	97 - 06	Tube Flares - Front Pair (6.5" wide)	7303	7303PC	S7303	S7303-RAW
TJ Wrangler & LJ Unlimited	97 - 06	Tube Flares - Rear Pair (6.5" wide)	7304	7304PC	S7304	S7304-RAW
JK Wrangler & Unlimited	07 - 16	Tube Flares - Front Pair (7.5" wide)	7311	7311PC	S7311	S7311-RAW
JK Wrangler & Unlimited	07 - 16	Tube Flares - Front Pair (10" wide)	7314	7314PC	S7314	S7314-RAW
JK Wrangler & Unlimited	07 - 16	Tube Flares - Front Pair (12.5" wide)	7315	7315PC	S7315	S7315-RAW
JK Wrangler 2 - Door	07 - 16	Tube Flares - Rear Pair (4.5" wide)	7312	7312PC	S7312	S7312-RAW
JK Wrangler 4 - Door	07 - 16	Tube Flares - Rear Pair (4.5" wide)	7313	7313PC	S7313	S7313-RAW
JK Wrangler & Unlimited	07 - 16	Tube Flares - Rear Pair (6.5" wide)	7316	7316PC	S7316	S7316-RAW

Tube Flare Side Marker Light Kit

Universal	All	Tube Flare Side Marker Light Kit	2731
-----------	-----	----------------------------------	------

BODY ARMOR



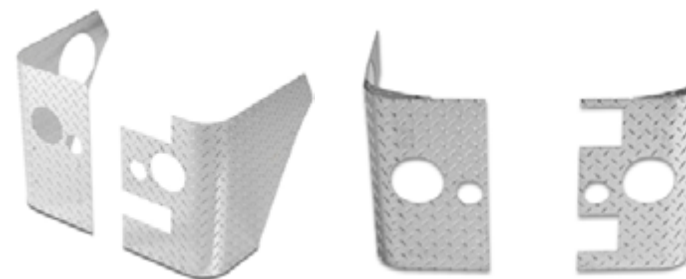
REAR CORNERS

Rear corners provide structural support to the corner area and enhance the appearance of the vehicle too. To allow easier installation, corners have pre-cut holes for the gas tank and tail light openings, unless otherwise specified. Sold in pairs.

Note: Rear Corners will not fit Jeep Wranglers with the plastic option, Renegade packages in 1995 and earlier models.

REAR CORNERS W/ CUTOUTS FOR LED LIGHTS

Our new Rear Corners have openings to accommodate two flush-mounted LEDs: a 4" red stop, turn and taillight, plus a 2" clear lens reverse light. All lights are American-made with a lifetime warranty and are sold separately. The corners also have a cutout for the gas tank. Our corners are long-lasting, durable and are available in three finishes. Sold in pairs.



SHORT CORNERS

When a full rear corner is not desired, Short Corners have the same width and height of the sideplates and backplates to round out a complementary trim package.



ENTRY GUARDS

Entry Guards protect the paint and finish of door jambs under the door seals when closed. The treadbrite provides an excellent non-skid surface for safety. Entry Guards are available in all exterior finishes (except polished aluminum) and are sold in pairs.



BACKPLATES

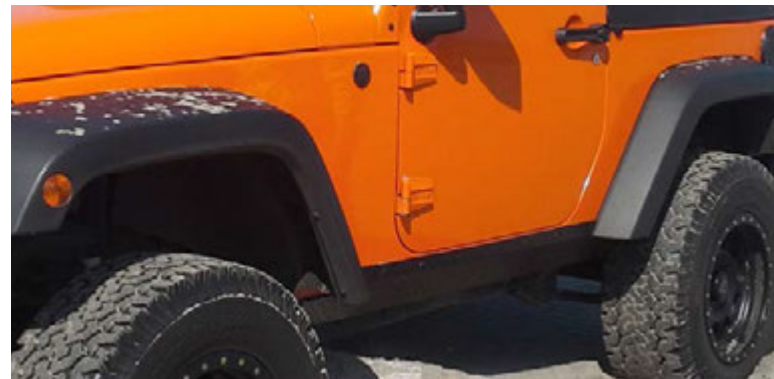
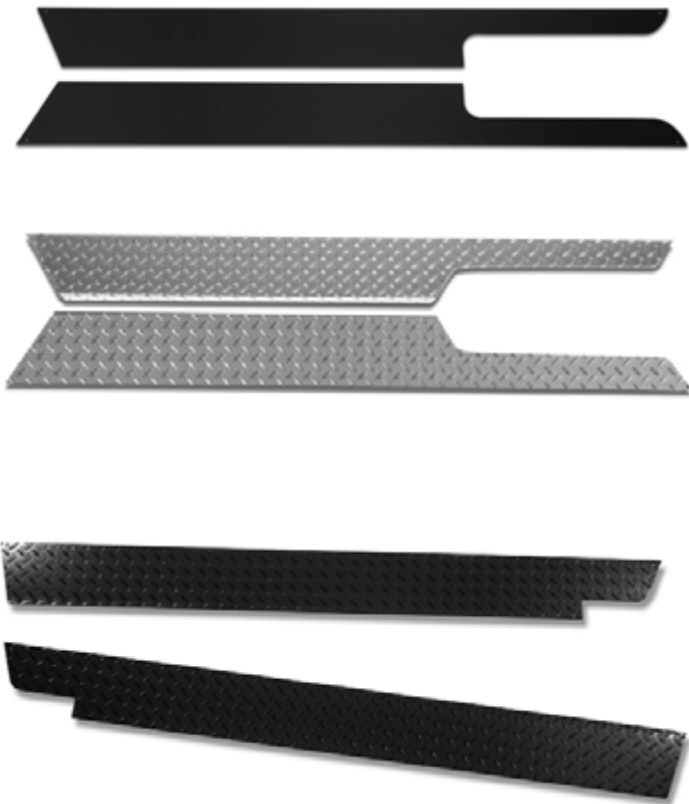
Backplates cover the body beneath the tailgate and between the rear corners. They are cut out to fit around hinges for ease of tailgate operation. Warrior also makes a unique full wrap backplate for the Jeep CJ-5, extending center-to-center of the rear fender wells and covering the entire back of the tailgate opening.



SIDEPLATES

Sideplates protect the rocker panel area below the door as well as enhance the appearance of the vehicle. They are available flat or with a 90-degree bend (lip) that wraps 1" under the rocker panel. Sold in pairs.

Note: Sideplates will not fit Jeep Wranglers with the plastic option, Renegade/Sahara packages in 2006 and earlier models. In addition, Sideplates can be ordered without the front section cutout by placing an "X" behind the part number; e.g. #913X. The front edge must then be cut to fit any fender well area.



Model	Year	Description	Finish/Part Number				
			Diamond Plate	Black Diamond Plate	Polished Aluminum	Brushed Aluminum	Smooth Black Steel
Short Corners							
CJ5	55 - 83	Short Corners	802	802PC	802PA	-	S802
CJ7	76 - 86	Short Corners	804	804PC	804PA	-	S804
CJ8	76 - 86	Short Corners	810	810PC	810PA	-	S810
YJ Wrangler	86 - 96	Short Corners	807	807PC	807PA	-	S807
TJ Wrangler	97 - 06	Short Corners	816	816PC	816PA	-	S816
LJ Unlimited	04 - 06	Short Corners	818	818PC	818PA	-	S818
Entry Guards							
CJ5	55 - 83	Soft Door	901S	901SPC	901SPA	-	-
CJ7	76 - 86	Soft Door	901T	901TPC	901TPA	-	-
TJ Wrangler & LJ Unlimited	97 - 06	Soft Door or Hard Door	901TJ	901TJPC	901TJPA	60901	S901TJ
Backplates							
CJ5	55 - 83	Backplates	902C	902CPC	902CPA	-	S902C
CJ7, CJ8	76 - 86	Backplates	913C	913CPC	913CPA	-	S913C
YJ Wrangler	87 - 96	Backplates	908C	908CPC	908CPA	-	S908C
TJ Wrangler	97 - 06	Backplates	916C	916CPC	916CPA	-	S916C
LJ Unlimited	04 - 06	Backplates	918C	918CPC	918CPA	-	S918C

NOTE: All Polished Aluminum and Brushed Aluminum parts are considered a special order. This means that they are not an inventoried part number and will be subject to an estimated 4 week waiting period. Special orders cannot be cancelled or returned. Special order items are subject to the standard Warrior Products warranty.



Model	Year	Description	Finish/Part Number			
			Diamond Plate	Black Diamond Plate	Polished Aluminum	Smooth Black Steel
Rear Corners						
CJ2A & 3A	45 - 55	Corners w/o Holes	903	903PC	903PA	S903
CJ2A & 3A	45 - 55	Corners w/ No Fender Cut Out	903WO	903WOPC	903WOPA	S903WO
CJ5 & M38	53 - 83	Corners w/o Holes	902	902PC	902PA	S902
CJ5 & M38	53 - 83	Full Wrap Around w/o Holes	902FW	902FWPC	902FWPA	S902FW
CJ7	76 - 86	Corners w/o Holes	904	904PC	904PA	S904
CJ7	76 - 86	Corners w/ Holes	904A	904APC	904APA	S904A
CJ8	81 - 86	Corners w/o Holes	910	910PC	910PA	S910
YJ Wrangler	87 - 96	Corners w/o Holes	907	907PC	907PA	S907
YJ Wrangler	87 - 96	Corners w/ Holes	907A	907APC	907APA	S907A
TJ Wrangler & Rubicon	97 - 06	Corners w/o Holes	916	916PC	916PA	S916
TJ Wrangler & Rubicon	97 - 06	Corners w/ Holes	916A	916APC	916APA	S916A
TJ Wrangler & Rubicon	97 - 06	Corners for Bushwacker Pocket Flares w/Holes	916AX	916AXPC	916AXPA	S916AX
LJ Unlimited	04 - 06	Corners w/o Holes	918	918PC	918PA	S918
LJ Unlimited	04 - 06	Corners w/ Holes	918A	918APC	918APA	S918A
LJ Unlimited	04 - 06	Corners for Bushwacker Pocket Flares w/Holes	918AX	918AXPC	918AXPA	S918AX
JK Wrangler (2 Door)	07 - 16	Corners w/ Holes	919A	919APC	919APA	S919A
JK Unlimited (4 Door)	07 - 16	Corners w/ Holes	920A	920APC	920APA	S920A
JK Wrangler (2 Door)	07 - 16	Rear Corners w/out Cutouts (gas tank only)	924	924PC	924PA	S924
JK Unlimited (4 Door)	07 - 16	Rear Corners w/out Cutouts (gas tank only)	926	926PC	926PA	S926

Rear Corners w/ Cutouts for LED Lights

YJ Wrangler	87 - 96	Rear Corners w/ Cutouts for LED Lights	915A	915APC	915APA	S915A
TJ Wrangler	97 - 06	Rear Corners w/ Cutouts for LED Lights	917A	917APC	917APA	S917A
JK Wrangler - 2 Door	07 - 16	Rear Corners w/ Cutouts for LED Lights	924A	924APC	924APA	S924A
JK Unlimited - 4 Door	07 - 16	Rear Corners w/ Cutouts for LED Lights	926A	926APC	926APA	S926A
LJ Unlimited	04 - 06	Rear Corners w/ Cutouts for LED Lights	925A	925APC	925APA	S925A

NOTE: All Polished Aluminum (PA Series part #s) are considered a special order. This means that they are not an inventoried part number and will be subject to an estimated 4 week waiting period. Special orders cannot be cancelled or returned. Special order items will still carry the standard Warrior Products warranty.

Sideplates

CJ2-3	45 - 55	Sideplates	912	912PC	912PA	S912
CJ5 & M38	55 - 71	Sideplates	905	905PC	905PA	S905
CJ5	72 - 83	Sideplates	906	906PC	906PA	S906
CJ7	76 - 86	Sideplates	913	913PC	913PA	S913
CJ8	81 - 86	Sideplates	913B	913BPC	913BPA	S913B
YJ Wrangler	87 - 96	Sideplates	908	908PC	908PA	S908
TJ Wrangler	97 - 06	Sideplates	909	909PC	909PA	S909
LJ Unlimited	04 - 06	Sideplates	919	919PC	919PA	S919
JK Wrangler - 2 Door	07 - 16	Sideplates (Below Door Line Only)	921	921PC	921PA	S921
JK Wrangler - 2 Door	07 - 16	Sideplates (Includes 5" added above door line)	921E	921EPC	921EPA	S921E
JK Unlimited - 4 Door	07 - 16	Sideplates (Below Door Line Only)	922	922PC	922PA	S922
JK Unlimited - 4 Door	07 - 16	Sideplates (Includes 5" added above door line)	922E	922EPC	922EPA	S922E
JK Wrangler - 2 Door (Rubicon)	07 - 16	Sideplates (Below Door Line Only)	927	927PC	927PA	S927
JK Wrangler - 2 Door (Rubicon)	07 - 16	Sideplates (Includes 5" added above door line)	927E	927EPC	927EPA	S927E
JK Unlimited - 4 Door (Rubicon)	07 - 16	Sideplates (Below Door Line Only)	928	928PC	928PA	S928
JK Unlimited - 4 Door (Rubicon)	07 - 16	Sideplates (Includes 5" added above door line)	928E	928EPC	928EPA	S928E
CJ5	55 - 71	Sideplates w/ Lip	905U	905UPC	905UPA	S905U
CJ5	72 - 83	Sideplates w/ Lip	906U	906UPC	906UPA	S906U
CJ7	76 - 86	Sideplates w/ Lip	913U	913UPC	913UPA	S913U
CJ8	81 - 86	Sideplates w/ Lip	913BU	913BUPC	913BUPA	S913BU
YJ Wrangler	87 - 96	Sideplates w/ Lip	908U	908UPC	908UPA	S908U
TJ Wrangler	97 - 06	Sideplates w/ Lip	909U	909UPC	909UPA	S909U
LJ Unlimited	04 - 06	Sideplates w/ Lip	919U	919UPC	919UPA	S919U
XJ Cherokee - 4 Door	84 - 01	Sideplates (Pair) - 4 Door Model	935	935PC	935PA	S935
XJ Cherokee - 2 Door	84 - 01	Sideplates (Pair) - 2 Door Model	936	936PC	936PA	S936
XJ Cherokee - All	84 - 01	Under Door Sideplates - 2 & 4 Door	937	937PC	937PA	S937

NOTE A: All Sideplates can be special ordered without the front cutout by placing an "X" behind the part number. Must cut to fit the front edge.

NOTE B: Sideplates will not fit Wrangler Jeeps with the plastic option, Renegade/Sahara packages in 2006 and earlier models.

NOTE C: All Polished Aluminum (PA Series part #s) are considered a special order. This means that they are not an inventoried part number and will be subject to an estimated 4 week waiting period. Special orders cannot be cancelled or returned. Special order items are subject to the standard Warrior Products warranty.

TAILGATE COVERS

Tailgate Covers conceal the entire surface area of the tailgate. These covers have cutouts around the door handle for ease of tailgate opening and operation.



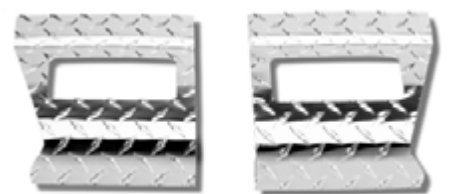
TAILGATE HINGE COVERS

Tailgate Hinge Covers replace the factory plastic hinge covers on any 07-16 JK Wrangler & Unlimited. When modifying any part of the tailgate area, the original plastic fasteners tend to break upon removal of the covers and/or are difficult to re-attach. These hinge covers offer greater interchangeability and add to the rugged look of the vehicle. They are constructed of 16-gauge steel and finished in gloss-black powder-coat. The hinges include stainless steel attachment hardware.



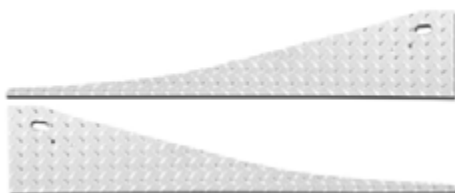
FRONT FENDER ROCK PROTECTORS

These covers protect against and cover ugly rock chips that speckle front fenders and also provide protection from tree branches and shrubs while off-road. They have cutouts for factory signal lights and are sold in pairs.



FRONT FENDER COVERS

Like the Front Fender Rock Protectors, these covers sit atop the fenders and match the rest of your body armor accessories. They have holes to accommodate hood latches and are sold in pairs.



Model	Year	Description	Finish/Part Number			
			Diamond Plate	Black Diamond Plate	Polished Aluminum	Smooth Black Steel
Tailgate Covers						
CJ7	76 - 86	Tailgate Cover	913D	913DPC	913DPA	S913D
YJ Wrangler	87 - 96	Tailgate Cover	908D	908DPC	908DPA	S908D
TJ Wrangler	97 - 06	Tailgate Cover	909D	909DPC	909DPA	S909D
LJ Unlimited	04 - 06	Tailgate Cover	918D	918DPC	918DPA	S918D
JK Wrangler & Unlimited	07 - 16	Tailgate Cover	920D	920DPC	920DPA	S920D
JK Wrangler & Unlimited	07 - 16	Tailgate Cover (w/o Center)	920D-1	920D-1PC	920D-1PA	S920D-1
JK Wrangler & Unlimited	07 - 16	Tailgate Cover (Center only)	920D-2	920D-2PC	920D-2PA	S920D-2
JK Wrangler & Unlimited	07 - 16	Center only - use w/ 3rd Brake Light Kit	920D-3	920D-3PC	920D-3PA	S920D-3
JK Wrangler & Unlimited	07 - 16	Tailgate Cover (w/out center) - No Holes	920D-4	920D-4PC	920D-4PA	S920D-4

Model	Year	Description	Finish/Part Number			
			Diamond Plate	Black Diamond Plate	Polished Aluminum	Smooth Black Steel
Tailgate Hinge Covers						
JK Wrangler (2 & 4 Door)	07 - 16	Tailgate Hinge Covers (pair) - 16 gauge steel	-	-	-	2200

Model	Year	Description	Finish/Part Number			
			Diamond Plate	Black Diamond Plate	Polished Aluminum	Smooth Black Steel
Front Fender Rock Protectors						
YJ Wrangler	87 - 96	Front Fender Rock Protection	90802	90802PC	-	S90802
TJ Wrangler	97 - 06	Front Fender Rock Protection	91602	91602PC	-	S91602
LJ Unlimited	04 - 06	Front Fender Rock Protection	91802	91802PC	-	S91802

Model	Year	Description	Finish/Part Number			
			Diamond Plate	Black Diamond Plate	Polished Aluminum	Smooth Black Steel
Front Fender Covers						
YJ Wrangler	87 - 96	Front Fender Cover	90801	90801PC	-	S90801
TJ Wrangler	97 - 97	Front Fender Cover	91600	91600PC	91600PA	S91600
TJ Wrangler & LJ Unlimited	98 - 06	Front Fender Cover	91601	91601PC	91600PA	S91601

NOTE: All Polished Aluminum (PA Series part #s) are considered a special order. This means that they are not an inventoried part number and will be subject to an estimated 4 week waiting period. Special orders cannot be cancelled or returned. Special order items will still carry the standard Warrior Products warranty.

FRONT FRAME COVERS

Front Frame Covers protect the frame between the grille and front bumper and complement the rest of the vehicle's trim accessories.



REPLACEMENT HOOD VENTS



OUTER COWLING COVERS

To complement the #920E Cowling, these covers extend beyond the hood over the rounded portion of the body under the windshield. They are available in diamond plate, black diamond plate and 14-gauge steel.



Replacement Hood Vents match other body armor accessories and add decorative styling to your Jeep hood. They are available in the full complement of finishes. For the JK Wrangler, a new cowling design is offered incorporating the hood vent and adding decorative trim across the width of the hood up to the windshield's glass.



Model	Year	Description	Finish/Part Number			
			Diamond Plate	Black Diamond Plate	Polished Aluminum	Smooth Black Steel
Front Frame Covers						
CJ5	55 - 83	Front Frame Cover	902FC	902FCPC	902FCPA	S902FC
CJ7, CJ8	76 - 86	Front Frame Cover	904FC	904FCPC	904FCPA	S904FC
YJ Wrangler	87 - 96	Front Frame Cover	907FC	907FCPC	907FCPA	S907FC
TJ Wrangler	97 - 06	Front Frame Cover	916FC	916FCPC	916FCPA	S916FC
TJ Wrangler	97 - 06	Front Frame Cover for Warrior Tube Bumpers	91610	91610PC	91610PA	S91610
LJ Unlimited	04 - 06	Front Frame Cover	918FC	918FCPC	918FCPA	S918FC
JK Wrangler & Unlimited	07 - 16	Front Frame Cover	920FC	920FCPC	920FCPA	S920FC

Model	Year	Description	Finish/Part Number			
			Diamond Plate	Black Diamond Plate	Polished Aluminum	Smooth Black Steel
Outer Cowling Covers						
JK Wrangler & Unlimited	07 - 16	Outer Cowling Covers (pair)	923	923PC	923PA	S923

Model	Year	Description	Finish/Part Number			
			Diamond Plate	Black Diamond Plate	Polished Aluminum	Smooth Black Steel
Replacement Hood Vents						
CJ5	55 - 75	Replacement Hood Vent	90270	90270PC	90270PA	S90270
CJ5, CJ7 & YJ Wrangler	76 - 96	Replacement Hood Vent	90470	90470PC	90470PA	S90470
JK Wrangler & Unlimited	07 - 16	Cowling Cover - Left Hand Drive	920E	920EPC	920EPA	S920E
JK Wrangler & Unlimited	07 - 16	Cowling Cover - Right Hand Drive	920E-RH	920EPC-RH	920EPA-RH	S920E-RH

NOTE: All Polished Aluminum (PA Series part #s) are considered a special order. This means that they are not an inventoried part number and will be subject to an estimated 4 week waiting period. Special orders cannot be cancelled or returned. Special order items will still carry the standard Warrior Products warranty.



Heavy Duty Aluminum Body Armor

HD Series Aluminum Body Armor is a new spin on the traditional Rear Corner, Tailgate Cover, and Sideplate designs. We've produced these new armor pieces using a 3/16" raw aluminum with a natural finish. This new aluminum design helps minimize the overall weight of our armor. The unfinished surface can be touched up after a day on the trail with a quick buff using a steel wool pad. Durable and light, this HD Armor is a great solution to aid in protecting your Jeep's body panels.

HD SIDEPLATES

HD TAILGATE COVERS



HD LED REAR CORNERS

Model	Year	Description	Part #
Heavy-Duty Aluminum Series			
JK Wrangler - 4 Door	07 - 16	LED Rear Corners 4 - Door	5000
JK Wrangler - 2 Door	07 - 16	LED Rear Corners 2 - Door	5010
JK Wrangler - 4 Door	07 - 16	Sideplates 4 - Door	5500
JK Wrangler - 2 Door	07 - 16	Sideplates 2 - Door	5505
JK Wrangler - 4 Door	07 - 16	Sideplates 4-Door (Rubicon Only)	5510
JK Wrangler - 2 Door	07 - 16	Sideplates 2-Door (Rubicon Only)	5515
JK Wrangler	07 - 16	Tailgate Cover Combo - no holes for snubber/wiring	5920
JK Wrangler	07 - 16	Outer Tailgate Cover - w/ holes for wire & snubbers	5921
JK Wrangler	07 - 16	Center Tailgate Cover	5922
JK Wrangler	07 - 16	Center Tailgate Cover for 3rd Brake Light	5923
JK Wrangler	07 - 16	Outer Tailgate Cover - no holes for snubber/wiring	5924

BRACKETS



OFF-ROAD JACK HOOD HINGE BRACKETS & LIGHT BAR

The Off-Road Jack Hood Hinge Bracket mounts to existing hood hinge holes, eliminating the need for drilling and making installation a snap. The bracket includes two threaded knobs to tighten and a strap that ties to the jack's handle to eliminate movement. All mounting hardware is included. For the TJ Wrangler, a matching light bar affixes to the hood hinge bracket and allows up to three lights to be positioned in front of the Off-Road Jack.



MIRROR & LIGHT COMBO BRACKETS

These Combo Brackets combine two functions in one easy-to-install bracket. Not only can you relocate your mirrors to the windshield, but you can also add an auxiliary light there as well. Sold in pairs.

Note: Once relocated, passenger side mirror may be difficult to use.



MIRROR RELOCATION BRACKETS

These brackets allow your factory mirrors to be relocated to the windshield hinge. They fit within the hinge's existing holes. They are made of 11-gauge steel and are powder-coated black. No additional drilling is required.

Note: Once relocated, passenger side mirror may be difficult to use.



Model	Year	Description	Part #
Off-Road Jack Hood Hinge Brackets & Light Bars			
CJ & YJ Wrangler	55 - 96	Off-Road Jack Hood Hinge Brackets (pair)	1541
TJ Wrangler & Unlimited	97 - 06	Off-Road Jack Hood Hinge Brackets (pair)	1540
JK Wrangler	07 - 16	Off-Road Jack Hood Hinge Brackets (pair)	1542
JK Wrangler	07 - 16	Hood Hinge Reinforcements	1542A
JK Wrangler	07 - 16	Hood Hinge Spacer Kit	1542B
Universal	-	Off-Road Jack Handle Strap (included in #s 1540 - 1542)	1543
TJ Wrangler & LJ Unlimited	97 - 06	Light Bar (fits atop # 1540)	1544

Washer Nozzle Relocation Kit

JK Wrangler	07 - 16	Washer Nozzle Relocation Kit	1575
-------------	---------	------------------------------	------

Note: 2013 - 2016 Jeep Wrangler JK/JKU requires (2) #1575 Washer Nozzle Relocation Kits

Mirror Relocation Brackets

YJ Wrangler	87 - 96	Mirror Relocation Brackets	1505
TJ Wrangler	97 - 02	Mirror Relocation Brackets (Fits 03 - 06 w/ 97 - 02 Mirror)	1500
TJ Wrangler & LJ Unlimited	03 - 06	Mirror Relocation Brackets	1502
JK Wrangler & Unlimited	07 - 16	Mirror Relocation Brackets	1501

Mirror Relocation Brackets w/ Mirrors

YJ Wrangler	87 - 96	Mirror Relocation Brackets w/ Mirrors	1516
TJ Wrangler	97 - 02	Mirror Relocation Brackets w/ Mirrors	1511
TJ Wrangler	03 - 06	Mirror Relocation Brackets w/ Mirrors	1512

Mirror & Light Combo Brackets

CJ & YJ Wrangler	80 - 96	Combination Mirror & Light Bracket	1495
TJ Wrangler	97 - 06	Combination Mirror & Light Bracket (Fits 03 - 06 w/ 97 - 02 Mirror)	1490

Mirror & Light Combo Brackets w/ Mirrors

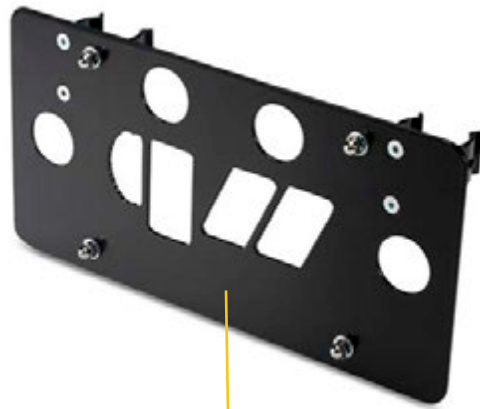
CJ & YJ Wrangler	76 - 96	Combination Mirror & Light Bracket w/ Mirrors	1491
TJ Wrangler	97 - 06	Combination Mirror & Light Bracket w/ Mirrors	1496

LICENSE PLATE BRACKETS

A perfect way to relocate your license plate while adding a custom look, these License Plate Brackets are constructed of HRPO steel plate and comes complete with all of the mounting hardware for an easy installation. The lighted version comes with a triple LED marker light. The 3" Tube Bumper Brackets allow the license plate to be relocated from the vehicle to the bumper and is designed specifically for Warrior Double Tube Bumpers.



HAWSE



ROLLER FAIRLEAD



JK STEEL REPLACEMENT



SPARE TIRE LICENSE PLATE MOUNT

A perfect solution for those wanting to move their license plate away from the outside corners of the body of their vehicle, our Spare Tire License Plate Mount will create a mounting point inside the center of your tailgate-mounted spare tire. The mount features a quick-disconnect pin for easy removal and adjustable settings to fit many applications. Model featuring optional LED powered 3rd brake light pictured on the right.



Model	Year	Description	Part #
License Plate Brackets			
Universal	-	Roller Fairlead License Plate Mount	2350
Universal	-	Hawse Fairlead License Plate Mount	2360
Universal	-	Spare Tire License Plate Mount	2370
Universal	-	Spare Tire License Plate Mount w/ 3rd Brake Light	2380
Universal	-	License Plate Bracket for 3" Tube Bumper	50000
TJ Wrangler & LJ Unlimited	97 - 06	Curved License Plate Bracket for OE Tail Lights	1560
TJ Wrangler & LJ Unlimited	97 - 06	Curved License Plate Bracket w/ LED Light for Flush Mount LED Tail Lights	1561
TJ Wrangler & LJ Unlimited	97 - 06	Center-Mounted Tailgate License Plate Bracket w/ LED Light	1559
JK Wrangler & Unlimited	07 - 16	Center-Mounted Tailgate License Plate Bracket w/ LED Light	1562
JK Wrangler & Unlimited	07 - 16	Replacement License Plate Bracket w/ LED Light	1563
JK Wrangler & Unlimited	07 - 16	License Plate Bracket w/ LED light for WP LED Corners	1564
Mirror Filler Plates			
JK Wrangler	07 - 16	Mirror Filler Plates - Diamond Plate	1506
JK Wrangler	07 - 16	Mirror Filler Plates - Black Diamond Plate	1506PC
JK Wrangler	07 - 16	Mirror Filler Plates - Smooth Black Steel	S1506
Model	Year	Description	Part #
Windshield Light Brackets			
CJ, YJ	76 - 96	Windshield Light Brackets	1515
TJ Wrangler & LJ Unlimited	97 - 06	Windshield Light Brackets	1510
JK Wrangler & Unlimited	07 - 16	Windshield Light Brackets	1517
Spare Tire License Plate Mount w/ Optional 3rd Brake Light			
Universal	-	Spare Tire License Plate Mount	2370
Universal	-	Spare Tire License Plate Mount w/ 3rd Brake Light	2380



AUXILIARY LIGHT WINDSHIELD BRACKETS

Offered in the same materials and finishes of other complementary body armor products, our Auxiliary Light Windshield Brackets can position lights at the windshield hinge. Available for the full array of Jeep vehicles, CJ-5 through TJ Wrangler, light brackets come in pairs.



Model	Year	Description	Diamond Plate	Black Diamond Plate
Auxiliary Light Windshield Brackets				
CJ & YJ Wrangler	76 - 96	Auxiliary Light Windshield Bracket	1503	1503PC
TJ Wrangler & LJ Unlimited	97 - 06	Auxiliary Light Windshield Bracket	1504	1504PC
Windshield Light Brackets			Smooth Black Steel	
CJ, YJ	76 - 96	Windshield Light Brackets		1515
TJ Wrangler & LJ Unlimited	97 - 06	Windshield Light Brackets		1510
JK Wrangler & Unlimited	07 - 16	Windshield Light Brackets		1517
Mirror Filler Plates				
JK Wrangler	07 - 16	Mirror Filler Plates - Diamond Plate		1506
JK Wrangler	07 - 16	Mirror Filler Plates - Black Diamond Plate		1506PC
JK Wrangler	07 - 16	Mirror Filler Plates - Smooth Black Steel		S1506

MIRROR FILLER PLATES

Filler Plates cover the holes left when the door's mirrors are removed and/or repositioned to the windshield frame. Available in three finishes: diamond plate, black diamond plate and smooth black steel.



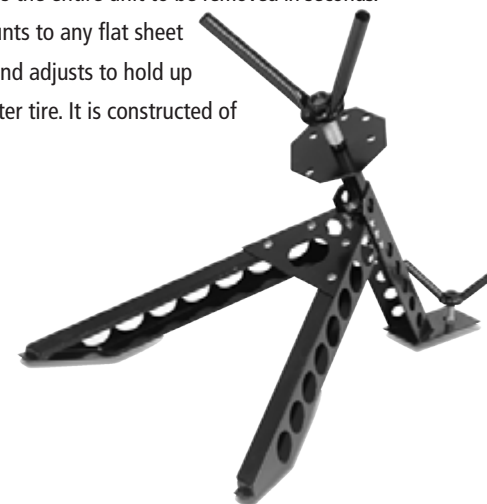
WINDSHIELD LIGHT BRACKETS

This bracket allows an auxiliary light to be mounted to the windshield hinge. It utilizes existing holes so no drilling is required. Sold in pairs.



REMOVABLE SPARE TIRE CARRIER

This carrier has a quick-release on / off head in which to load and/or remove the tire. There is also an additional quick-release head at its base that allows the entire unit to be removed in seconds. The carrier mounts to any flat sheet metal surface and adjusts to hold up to a 44" diameter tire. It is constructed of 12-gauge steel.



THIRD BRAKE LIGHT BRACKETS

An ideal solution when adding a larger spare tire to your rig, these brackets allow the third brake light to be raised for improved visibility from the rear of the Jeep and are easy to install.



Model	Year	Description	Part Number
Removable Spare Tire Carrier			
Universal	-	Spare Tire Carrier (5 & 6 Lug)	201
Universal	-	Spare Tire Carrier (8 Lug)	202

Vacuum Pump Relocation Bracket			
JK Wrangler & Unlimited	12 - 16	JK Wrangler & Unlimited Vacuum Pump Relocation Bracket	5905

Spare Tire Spacers			
CJ7	76 - 86	Spare Tire Spacer (5 on 5.5) Tire size: up to 33"; up to 35" w/ reinforcement	91620
YJ, TJ, & LJ	87 - 06	Spare Tire Spacer (5 on 4.5) Tire size: up to 33"; up to 35" w/ reinforcement	91625
JK Wrangler & Unlimited	07 - 16	Spare Tire Spacer (5 on 5) Tire size: up to 33"; up to 35" w/ reinforcement	91630
JK Wrangler & Unlimited	07 - 16	Combo Kit (includes 91630 & 1480 Third Brake Light Bracket) Tire size: up to 33" or up to 35" w/ reinforcement	91631

Third Brake Light Bracket			
TJ Wrangler	97 - 03	Third Brake Light Bracket	1470
TJ Wrangler & LJ Unlimited	04 - 06	Third Brake Light Bracket	1475
JK Wrangler & Unlimited	07 - 16	Third Brake Light Bracket	1480

Auxiliary Light Brackets			
Drill & Bolt Light Tab	-	Fits 1" Round Tubing (pair)	845
Clamp-On Light Tab	-	Fits 1 1/4" Round Tubing (pair)	59001
Clamp-On Light Tab	-	Fits 1 1/2" Round Tubing (pair)	59003
Clamp-On Light Tab	-	Fits 1 3/4" Round Tubing (pair)	59005
Clamp-On Light Tab	-	Fits 2" Round Tubing (pair)	59004

SPARE TIRE SPACERS

This spacer allows an extra 2" of clearance for mounting over-sized tires. It is designed to mount directly to the factory spare tire carrier. This bracket has multiple location holes which allows it to be mounted in several different positions. Warrior Tailgate Covers can be used in conjunction with this product for larger, heavier, off-road tires.



AUXILIARY LIGHT BRACKETS

Our Auxiliary Light Brackets allow custom placement of lights on any round tubing, from 1" to 2" in diameter. These brackets are powder-coated in a durable black finish and are manufactured in steel. Sold in pairs.



SIDE STEPS



ROCK BARS

Rock Bars are constructed of heavy-duty 2" x 4" rectangular steel and designed to protect the entire length of the rocker panel. Polyurethane end caps keep the tube free of debris. Rock Bar options include a diamond plate entry step, black diamond plate step, or no step. The Bars are powder-coated for durability.



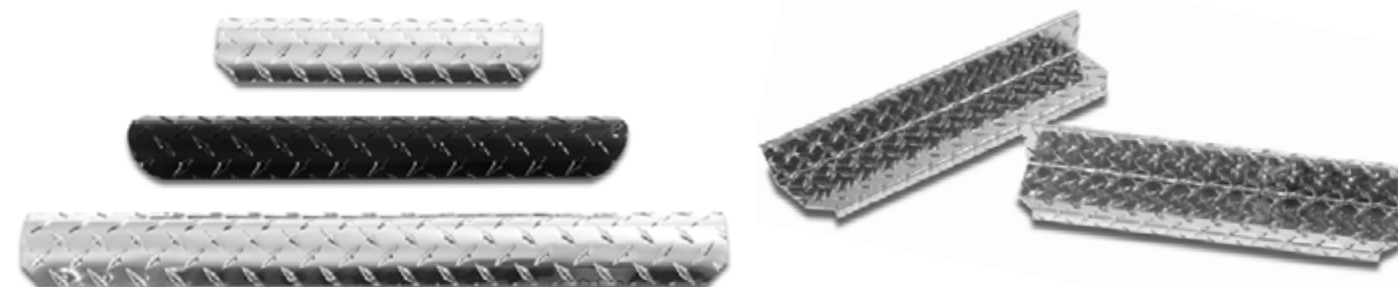
ROCK SLIDERS

Rock Sliders provide a full 7" of under-body wrap to the rocker panel and are built from rugged 3/16" steel plate. They can be ordered with or without the step bar shown. The step bar tapers out towards the rear tire to provide added side protection from off-road hazards.



STEP PLATES & COVERS

Constructed of heavy-gauge diamond plate aluminum treadbrite, our plate provides a safe, non-skid surface on which to stand atop a tubular product. Step Plates can be used on most 3" nerf bars and/or tube bumpers. The factory step application replaces the factory step inset on the OEM side steps. Sold in pairs.





KNIGHT GUARD™ NERF BARS

Our signature Knight Guard™ Nerf Bars span the full length of the vehicle for wheel-to-wheel protection of the rocker panel and are constructed of 3" round tube. Each bar acts as an entry step into the vehicle and is powder-coated black.

Note: Each Bar is pre-slotted with holes for adding the complementary Knight Guard™ Step. Steps sold separately. Minimal drilling is required to complete the installation.



KNIGHT GUARD™ STEPS

The Knight Guard™ Step is a U-shaped tubular design with a flat area step pad. Diamond plate treadbite provides a non-skid entry surface. Specially designed 'hook tabs' can mount to the Knight Guard™ Nerf Bars or to any existing aftermarket Nerf Bar for a complete entry system. This temporary step is easy to remove.

Note: The Knight Guard™ Step can be used with any 3" round tube by creating mounting slots into an existing nerf or side bar. This conversion procedure is listed within the installation instructions.



Model	Year	Description	Steps Per Side	Slots	Part#
Knight Guard Nerf Bars					
CJ7 Wrangler	76 - 86	Nerf Bar (Pair) - Steps Sold Separately	1	4	55875
YJ Wrangler	86 - 96	Nerf Bar (Pair) - Steps Sold Separately	1	4	55900
TJ Wrangler	97 - 06	Nerf Bar (Pair) - Steps Sold Separately	1	4	55925
LJ Unlimited	03 - 06	Nerf Bar (Pair) - Steps Sold Separately	1	4	55950
JK Wrangler	07 - 16	Nerf Bar (Pair) - Steps Sold Separately	1	4	55985
JK Unlimited	07 - 16	Nerf Bar (Pair) - Steps Sold Separately	2	8	55994
JK Unlimited	07 - 16	Nerf Bar (Pair) - Steps Sold Separately	1	4	55995
Cherokee (2 & 4 - Door)	84 - 01	Nerf Bar (Pair) - Steps Sold Separately	1	4	55975
Knight Guard Steps					
All	-	3" Dropped Step (pair)	2	-	55005
All	-	3" Dropped Step	1	-	55006
All	-	6" Dropped Step (pair)	2	-	55010
All	-	6" Dropped Step	1	-	55011

Model	Year	Description	Length	Diamond Plate Step	Black Diamond Plate Step	Without Step
Rock Bars						
CJ5	72 - 75	Rock Bars	43"	7450	7452	7451
CJ5	76 - 83	Rock Bars	44"	7460	7462	7461
CJ7	76 - 86	Rock Bars	57"	7470	7472	7471
CJ8	81 - 86	Rock Bars	68"	7480	7482	7481
YJ Wrangler	87 - 96	Rock Bars	52"	7490	7492	7491
TJ Wrangler	97 - 06	Rock Bars	52"	7500	7502	7501
LJ Unlimited	03 - 06	Rock Bars	60"	7510	7512	7511
JK Wrangler	07 - 16	Rock Bars	52"	7440	7442	7441
JK Unlimited	07 - 16	Rock Bars	68"	7410	7412	7411
JK Unlimited	07 - 16	Rock Bars	68"	7410A*	7412A*	7411
Cherokee	84 - 01	Rock Bars	62"	7430	7432	7431

*NOTE: Includes front and rear steps, for a total of four steps

Model	Year	Description	Part #
Rock Sliders			
CJ5	55 - 75	Rock Slider	91290
CJ5	55 - 75	Rock Slider w/ Step Bar	91295
CJ7	76 - 86	Rock Slider	91390
CJ7	76 - 86	Rock Slider w/ Step Bar	91395
YJ Wrangler	87 - 96	Rock Slider	90890
YJ Wrangler	87 - 96	Rock Slider w/ Step Bar	90895
TJ Wrangler	97 - 06	Rock Slider	90990
TJ Wrangler	97 - 06	Rock Slider w/ Step Bar	90995
LJ Unlimited	03 - 06	Rock Slider	91890
LJ Unlimited	03 - 06	Rock Slider w/ Step Bar	91895

(DIY) Renegade Rails

JK Wrangler (2-Door)	07 - 16	(DIY) Renegade Rails w/ No Step	54001
JK Wrangler (2-Door)	07 - 16	(DIY) Renegade Rails w/ Step	54002
JK Wrangler (4-Door)	07 - 16	(DIY) Renegade Rails w/ No Step	54005
JK Wrangler (4-Door)	07 - 16	(DIY) Renegade Rails w/ Step	54006

Model	Year	Description	Length	Diamond Plate	Black Diamond Plate
Step Plates					
Universal	-	Nerf Bar Step Plate	12"	712	712PC
Universal	-	Nerf Bar Step Plate	18"	718	718PC
Universal	-	Nerf Bar Step Plate	24"	724	724PC

Step Covers

YJ Wrangler	87 - 96	Factory Step Plates (pair)	-	908S	908SPC
TJ Wrangler & LJ Unlimited	97 - 06	Factory Step Plates (pair)	-	916S	916SPC



D.I.Y RENEGADE RAILS

Warrior's Renegade Rock Rail Kits are heavy-duty, weld-on kits for the 'do-it-yourself' installer that would like to enhance the functionality of their factory Rubicon Rock Rails.

Note: All kits consist of 1.5" x .120 wall tubing and kits #54006 and #54002 also include dimpled step plates and gussets. This product requires welding. Requires OEM Rubicon Rails to install.





TOWING



TOW BARS – FIXED

This Fixed Tow Bar has a 3500 lb. towing capacity and is manufactured of steel. It is jig-welded and powder-coated black for lasting durability. This tow bar comes complete with tow bar mounting brackets (part # 861) for flat surface mounting. The welded coupler is designed for a universal 2" ball mount.



TOW BARS – COLLAPSIBLE

This rugged tow bar has a 5000 lb. towing capacity and is fully collapsible for easy storage and/or removal when not in use. The locking coupler is designed for any universal 2" ball mount while its arms allow adjustment of the bars to its mounting host. It is crafted from heavy-duty steel and powder-coated black for corrosion resistance. The tow bar can be attached using tow bar shackles or mounted directly to a bumper or other flat surface using tow bar mounting brackets. All mounting brackets sold separately.

Note: Additional support may be required for factory bumpers.



HITCHES

Warrior Products hitches bolt on to the frame rails and works with existing bumper systems; factory or some aftermarket. Each application has a Class III Mount, and depending on the vehicle has a 3500 lb - 5000 lb towing capacity. Constructed of heavy-duty steel and powder-coated black for corrosion resistance, these hitches come with mounting hardware for a complete installation.



Model	Year	Description	Part #
Tow Bars			
Universal	-	Fixed Tow Bar (w/ 861 Mounting Bracket) - 3500 lb Capacity	862
Universal	-	Collapsible Tow Bar - 5000 lb Capacity	860

Model	Year	Description	Part #
Hitches			
CJ5, CJ7	76 - 86	Class III Receiver Hitch	1031
YJ Wrangler	87 - 96	Class III Receiver Hitch	1030
JK Wrangler	07 - 16	Class III Receiver Hitch	1075
TJ Wrangler & LJ Unlimited	97 - 06	Class III Receiver Hitch	1085
Cherokee	84 - 01	Class III Receiver Hitch	1027
Grand Cherokee	93 - 98	Class III Receiver Hitch	1065
Grand Cherokee	99 - 04	Class III Receiver Hitch	1028

Model	Black	Chrome
Drop Ball Mount		
2" Drop Ball Mount	1002	1002C
4" Drop Ball Mount	1004	1004C
6" Drop Ball Mount	1006	1006C
8" Drop Ball Mount	1008	1008C
10" Drop Ball Mount	1010B	1010C
12" Drop Ball Mount	1012B	1012C

CLEVIS SHACKLES (D-RINGS)

Clevis Shackles are of 3/4" size and come with a 7/8" diameter pin. These shackles fit any Warrior bumper with D-Ring brackets and are sold individually. Clevis Shackles are available in cast steel and/or polished stainless steel.



TOW BAR D-RING ADAPTERS

A D-ring adapter bracket allows any of the Warrior Products tow bars (collapsible and/or fixed) to attach to any of our bumpers that have D-Rings. Brackets are sold in pairs.

Note: Product does not fit on XJ Winch Bumper models because the D-Ring hooks are spread too far apart for the Tow Bar.



TOW BAR MOUNTING BRACKETS

Designed for use with either of the Warrior Products Tow Bars, these heavy-duty brackets are designed to attach to any non-factory steel bumper. They will work equally well on any flat surface of a vehicle as its mounting host.

Note: Not to be used with factory bumper.



D-RING MOUNTS

D-Ring Mounts are constructed of 1" x 2" solid bar on a 3/8" mounting plate and powder-coated black for durability. These heavy-duty universal D-Rings are sold in pairs. The Warrior Weld-On D-ring Mount Kit is designed to be welded through the face of heavy-duty steel bumper. These D-Ring Mounts are constructed from 1" thick raw steel and come with 3/16" thick steel reinforcement plates. Each kit includes a pair of mounts and reinforcement plates.



TOW BAR SHACKLES

Designed for use with our Collapsible Tow Bar, these heavy-duty shackles come in either hammertone gray or gold zinc finishes. They provide an effective alternative to bumper-mounted attachment brackets and are made to replace the existing front shackles of the Jeep.



RECEIVER EXTENSIONS

Our 10" Receiver Extensions provide greater turn clearance when pulling trailers. Two applications are offered: one to fit any standard 2" receiver and another adapter stinger to fit 1 1/4" light-duty receivers.



RECEIVER ADAPTER

Warrior Products Receiver Adapter can be affixed to any standard 1 1/4" receiver hitch. It converts the 1 1/4" receiver to a standard Class III 2" Receiver. Please note that you should always follow vehicle manufacturer's towing capacity guidelines.



Model	Year	Description	Part #
Clevis Shackles & D-Ring Mounts			
Universal	-	Cast Iron 3/4" D-Ring	2100*
Universal	-	Stainless Steel 3/4" D-Ring	2105*
Universal	-	Bolt-on D-Ring Bracket Kit	866
Universal	-	Weld-On D-Ring Mount Kit	868

* Please note that D-Rings / Clevis Shackles are not manufactured by Warrior Products.

Tow Bar D-Ring Adapters			
Universal	-	Tow Bar D-ring Adapter Brackets 3/4" Pin (pair)	865
Universal	-	Tow Bar D-ring Adapter Brackets 7/8" Pin (pair)	867

Tow Bar Shackles			
CJ5	53 - 75	Hammertone Gray Tow Bar Shackle	158
CJ5	53 - 75	Gold Zinc Tow Bar Shackle	358
CJ7	76 - 86	Hammertone Gray Tow Bar Shackle (provides 1/2" lift)	159
CJ7	76 - 86	Gold Zinc Tow Bar Shackle (provides 1/2" lift)	359
YJ Wrangler	87 - 96	Hammertone Gray Tow Bar Shackle	162
YJ Wrangler	87 - 96	Gold Zinc Tow Bar Shackle	362

Tow Bar Mounting Brackets			
Universal	-	Tow Bar Mounting Bracket	861

Receiver Extensions			
Adapter	-	1.25" to 2" Receiver Adapter	852
Extension	-	10" Extension fits 2" Receivers	853

SUSPENSION



SUSPENSION LIFT KITS

Warrior Products Suspension Lift Kits are available for a wide range of Jeep vehicles including the Wrangler YJ, TJ, LJ, and JK, as well as the Cherokee XJ and Grand Cherokee ZJ. Most Warrior Lift Kits are available in multiple lift heights, from 2" to 4" and are available in a few configurations: Economy Lift Kits, Standard Lift Kits without shocks, and Complete Lift Kits with shocks. Warrior also offers all suspension components found in our lift kits as individual part numbers for easy replacement and custom applications.



SHOCK ABSORBERS & STEERING STABILIZERS

Warrior Products Shock Absorbers and Steering Stabilizers come in many of our lift kits and are also available separately. Our shocks feature a nine-stage valve system and a polished chrome piston and come specifically tuned for your application.



CONTROL ARMS

Warrior Products offers Upper and Lower Control Arms for your coil sprung vehicle applications. These arms are made using heavy duty steel, high quality poly bushings, and a rugged hammertone powder-coat. Warrior Lower Control Arms also have additional length built in to adjust the caster on the front axle, to counter the rotation from a suspension lift.



COIL SPRINGS

Warrior Products Coil Springs are progressive rate and provide a comfortable ride on road with enhanced performance off road. Front and rear Coil Springs are available to provide between 3" and 4" of lift depending on application.



LEAF SPRINGS & ADD-A-LEAF

Warrior Leaf Springs and Add-A-Leaf Kits are designed with a comfortable ride and on/off road performance in mind. Warrior Leaf Springs are available for front and rear Wrangler YJ applications with 2" and 3" lift options and can be combined with Warrior Products Lift Shackles to get even more lift for your Jeep. Rear Add-A-Leaf Kits are available for the Cherokee XJ and provide about 1.5" of lift and increase the vehicle's load capacity slightly. Add-A-Leaf Kits can also be combined with Warrior Shackles to fine tune the amount of lift gained.



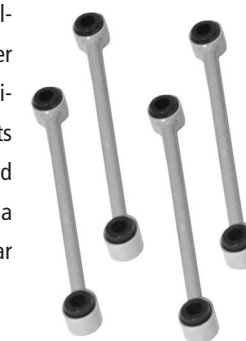
TRACKBAR RELOCATION BRACKETS

Warrior Track Bar Brackets are included in Warrior Products Complete Suspension Lift Systems and will help maintain overall drivability while keeping the steering angles in check. Front and rear Track Bar Brackets are available for multiple applications and are sold individually.



SWAY BAR END LINKS

Warrior Products Sway Bar End Links are available for specific vehicle applications, with either a stock suspension or a suspension lift. Additionally, they are also available in universal kits by length. Sway Bar End Links are constructed using heavy duty steel and powder-coated in a rugged hammertone finish. Warrior Sway Bar End Links are sold in pairs.



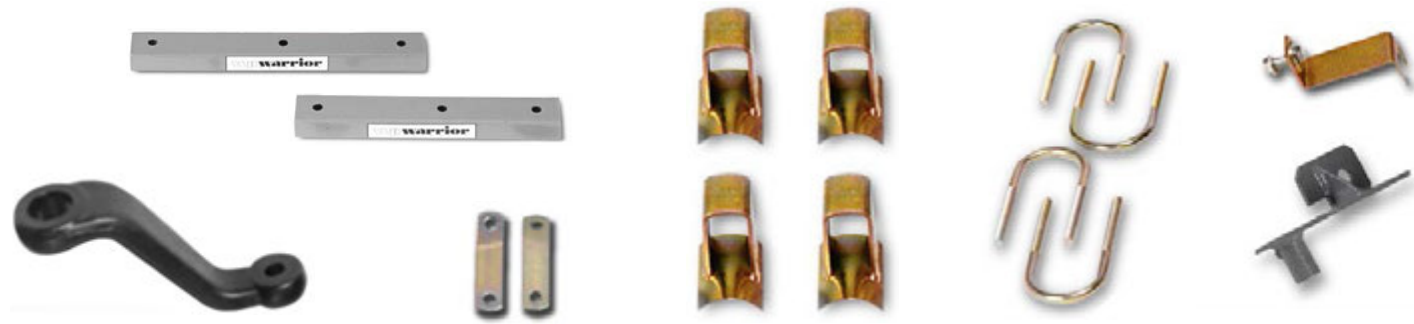
COIL SPRING SPACERS

Warrior Coil Spring Spacers are an excellent way to get a little extra lift for your coil sprung vehicle, without installing a complete suspension lift kit. Adding about 2" of lift, these Coil Spring Spacers are an inexpensive 'budget boost' option to fit a little larger set of tires on your vehicle or simply give it a more aggressive stance.



ADDITIONAL SUSPENSION COMPONENTS

These additional components can be used to augment an existing suspension lift, build a custom suspension system, or replace damaged/worn components. Warrior offers; Pitman Arms to correct the steering angles on a lifted vehicle, Bump Stop Extensions/Spacers to control wheel travel, Transfer Case Spacers and Linkage Brackets to keep your driveshaft angles in line, U-Bolts for your leaf sprung applications, and Brake Line Extension Brackets to ensure your vehicles brake system is not compromised after a suspension lift or under extreme articulation.



	Complete Kit	Shocks	FRT/RR	Coil Sprg. Spacer	Coil Springs	Transfer Case Spacer	Sway Bar Link	Trackbar Relocation Bracket	Lower Control Arm	Bump Stop Spacer	Trans Linkage Brkt.
TJ Wrangler & LJ Unlimited 97 - 06											
2" Rear Leveling Kit	30715	-	RR	(2) 80406	-	-	-	-	-	-	-
2" Lift Kit	30720	60508	FRT	(2) 80405	-	-	-	-	-	-	-
	-	60502	RR	(2) 80406	-	-	-	-	-	-	-
2" Lift Economy	30721	-	FRT	(2) 80405	-	-	-	-	-	-	-
	-	-	RR	(2) 80406	-	-	-	-	-	-	-
4" Lift Kit 97 - 02	30740	60506	FRT	-	800001	800008	800009	800017	800027	(4) 700031	(1) 700030
	-	60507	RR	-	800002	-	800010	800007	800027	-	-
4" Lift 97 - 02 Economy	30840	60506	FRT	-	800001	800008	800009	800017	-	-	(1) 700030
	-	60507	RR	-	800002	-	800010	800007	-	-	-
4" Lift 03 - 06	30741	60506	FRT	-	800001	800013	800009	800017	800027	(4) 700031	(1) 700030
	-	60507	RR	-	800002	-	800010	800007	800027	-	-
4" Lift 03 - 06 Economy	30841	60506	FRT	-	800001	800013	800009	800017	-	-	(1) 700030
	-	60507	RR	-	800002	-	800010	800007	-	-	-

	Complete Kit	Shocks	FRT/RR	Coil Sprg. Spacer	Coil Springs	Add-A-Leaf	Sway Bar Link	Trackbar Relocation Bracket	Lower Control Arm	Bump Stop Spacer	Brake Line Extension
JK Wrangler & Unlimited 07 - 16											
JK Wrangler 2" Spacer Kit w/ Shocks	30820	60506	FRT	(2) 80407	-	-	-	-	-	-	-
	-	60509	RR	(2) 80408	-	-	-	-	-	-	-
JK Wrangler 2" Spacer Kit Economy	30821	-	-	(2) 80407	-	-	-	-	-	-	-
	-	-	-	(2) 80408	-	-	-	-	-	-	-
JK Wrangler 3" Lift Kit w/ Shocks	30851	60506	FRT	-	700052	-	800038	800036	800034	-	800044
	-	60509	RR	-	700053	-	800039	800037	800035	-	800044
JK Wrangler 3" Lift Economy	30852	-	FRT	-	700052	-	800038	800036	800034	-	800044
	-	-	RR	-	700053	-	800039	800037	800035	-	800044

	Complete Kit	Shocks	FRT/RR	Shackles	Leaf Springs	Transfer Case Spacer	Sway Bar Link	Trackbar Relocation Bracket	U-Bolts	Bump Stop Spacer	Pitman Arm	Brake Line Extension
YJ Wrangler 87 - 96												
2" Lift 87 - 96	30620	60506	FRT	-	800023	-	-	-	800021	-	-	700021
	-	60502	RR	-	800024	-	-	-	800022	-	-	700022
3" Lift 87 - 96	30630	60501	FRT	-	800019	800006	800014	800018	800021	800003	800016	700021
	-	60502	RR	-	800020	-	-	800005	800022	-	-	700022
3" Kit 87 - 96 Economy	30631	60501	FRT	-	800019	800006	-	-	-	-	-	700021
	-	60502	RR	-	800020	-	-	-	-	-	-	700022
4" Kit 87 - 96	30640	60501	FRT	800149	800019	800006	800014	800018	800021	800003	800016	700021
	-	60502	RR	800150	800020	-	-	800005	800022	-	-	700022
4" Kit 87 - 96 Economy	30641	60501	FRT	800149	800019	800006	-	-	-	-	-	700021
	-	60502	RR	800150	800020	-	-	-	-	-	-	700022

	Complete Kit	Shocks	FRT/RR	Shackles	Coil Spring Spacers	Add-A-Leaf	Sway Bar Link	Trackbar Relocation Bracket	Lower Control Arm	Bump Stop Spacer	Pitman Arm	Brake Line Extension
XJ Cherokee 84 - 01												
2" Lift 84 - 01	30920	-	-	-	-	-	-	-	-	-	-	-
3" Lift 84 - 01	30930	60506	FRT	-	800026	-	800015	800017	800027	-	-	-
	-	60507	RR	147	-	800025	-	-	-	-	-	-

	Complete Kit	Shocks	FRT/RR	Shackles	Coil Spring Spacers	Add-A-Leaf	Sway Bar Link	Trackbar Relocation Bracket	Lower Control Arm	Bump Stop Spacer	Pitman Arm	Brake Line Extension
ZJ Grand Cherokee 93 - 98												
2" Lift 93 - 98	30520	60508	FRT	-	(2) 80405	-	-	-	-	-	-	-
	-	60507	RR	-	(2) 80405	-	-	-	-	-	-	-
2" Lift 93 - 98 Economy	30521	-	FRT	-	(2) 80405	-	-	-	-	-	-	-
	-	-	RR	-	(2) 80405	-	-	-	-	-	-	-

GREASEABLE SHACKLES

This unique suspension system comes complete with lock nuts, polyurethane bushings, drilled sleeves (where applicable) and hardened bolts with greaseable fittings. Similar to our leaf spring shackle kits, these kits contain all of the hardware needed for easy installation and an immediate lift to clear oversized tires. Our Shackles allow a lift from 1/2" to 2 1/2", depending on the application. Kits come in pairs and are available in hammertone gray or gold zinc finishes.



Model	Year	Lift	Front		Rear		Greaseable Bolt & Bushing Kit (FRT/RR)
			Gray	Gold	Gray	Gold	
Greaseable Shackles							
CJ5	53 - 75	1/2"	13190	13192	13190	13192	1319
CJ5	53 - 75	1 1/2"	13160	13162	13160	13162	1319
CJ5	53 - 75	2 1/2"	13460	13462	13460	13462	1319
CJ5, CJ7	76 - 86	0"	13360	13362	14410	14412	-
CJ5, CJ7	76 - 86	1/2"	13210	13212	17200	17202	1312/1714
CJ5, CJ7	76 - 86	1 1/2"	13120	13122	17150	17152	1312/1714
CJ5, CJ7	76 - 86	2"	13130	13132	17140	17142	1312/1714
YJ Wrangler	87 - 96	0"	13200	13202	13220	13222	1323
YJ Wrangler	87 - 96	1/2"	13490	13492	13500	13502	1323
YJ Wrangler	87 - 96	1 1/4"	13140	13142	13230	13232	1323
XJ Cherokee	84 - 01	1"	-	-	13470	13472	1347

NOTE: ***Long side up on offset Shackles

LEAF SPRING SHACKLE KITS

These jig-built, MIG-welded spring shackles come complete with all the mounting hardware required for an easy installation. Shackle kits lift one end of the vehicle from 1/2" up to 2 1/2", depending on the application. Kits come in pairs and are available in hammertone gray or gold zinc finishes.

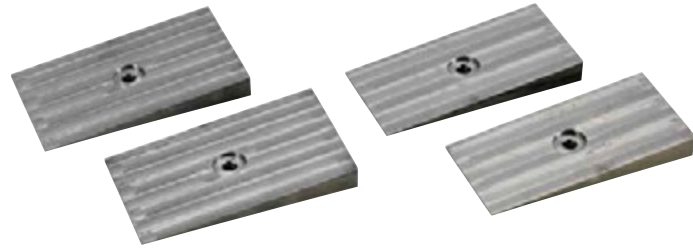


Model	Year	Lift	Front		Rear		Greaseable Bolt & Bushing Kit (FRT/RR)
			Gray	Gold	Gray	Gold	
Leaf Spring Shackle Kits							
CJ5	53 - 75	1/2"	119	319	119	319	1319
CJ5	53 - 75	1 1/2"	116	316	116	316	1319
CJ5	53 - 75	2 1/2"	146	346	146	346	1319
CJ5, CJ7	76 - 86	0"	136	336	141	341	-
CJ5, CJ7	76 - 86	1/2"	121	321	120	320	1312/1714
CJ5, CJ7	76 - 86	1 1/2"	112	312	115	315	1312/1714
CJ5, CJ7	76 - 86	2"	113	313	114	314	1312/1714
YJ Wrangler	87 - 96	0"	120	320	122	322	1323
YJ Wrangler	87 - 96	1/2"	149	349	150	350	1323
YJ Wrangler	87 - 96	1 1/4"	114	314	123***	323***	1323
Commandos	All	1"	164	364	-	-	-
Comanche	86 - 92	1"	-	-	165	365	1347
XJ Cherokee	84 - 01	1"	-	-	147	347	1347
XJ Cherokee	84 - 01	2"	-	-	165	365	1347

NOTE: ***Long side up on offset Shackles

LEAF SPRING SHIMS

Correct the pinion and/or caster angles in your leaf-sprung Jeep using our heavy-duty Leaf Spring Shims. These shims are designed to be permanently attached to the leaf spring pack using the leaf's cross pin. The cross holes are counter-bored against the angled surface to ensure the cross pin gets even clamping force across the spread of the pin's top surface. Steel construction helps to keep the shims from breaking under heavy load conditions. Unlike cast aluminum shims, our machined steel shims resist cracking under the harsh conditions your suspension goes through.



SPRING PERCHES

These versatile, weld-on leaf Spring Perches are perfect for axle swaps, spring over or spring under conversions, or replacing perches that have collapsed. They work well for installing wide springs or relocating them altogether on your rig. Made of heavy duty steel and available in multiple widths from 1-3/4" - 3" wide. Sold in pairs.



SHACKLE REVERSE SYSTEMS

Have you ever experienced an unstable, wandering sensation prevalent in CJ series Jeeps and YJ Wranglers? Our SR-180 Shackle Reverse System is designed to eliminate poor handling characteristics and help create a safer vehicle for all driving conditions. Simply by moving the front leaf spring shackle to the rear of the same spring creates an amazing improvement in driveability. The SR-180 system comes complete with urethane bushings for your front leaf springs and frame brackets. Bushings further enhance the handling and ride quality of your Jeep. All brackets are manufactured from HRPO steel for increased strength and are jig-welded for ease of installation.



Note: On several applications some welding is required.

Width	Angle	Description	Part Number
Leaf Spring Shims			
2"	2°	Universal Leaf Spring Shims (Pair)	800050
2"	4°	Universal Leaf Spring Shims (Pair)	800051
2"	6°	Universal Leaf Spring Shims (Pair)	800052
2 1/4"	2°	Universal Leaf Spring Shims (Pair)	800055
2 1/4"	4°	Universal Leaf Spring Shims (Pair)	800056
2 1/4"	6°	Universal Leaf Spring Shims (Pair)	800057
2 1/2"	2°	Universal Leaf Spring Shims (Pair)	800060
2 1/2"	4°	Universal Leaf Spring Shims (Pair)	800061
2 1/2"	6°	Universal Leaf Spring Shims (Pair)	800062
3"	2°	Universal Leaf Spring Shims (Pair)	800065
3"	4°	Universal Leaf Spring Shims (Pair)	800066
3"	6°	Universal Leaf Spring Shims (Pair)	800067
3"	8°	Universal Leaf Spring Shims (Pair)	800068

Model	Year	Description	Part Number
Spring Perches			
Universal	-	1 3/4" Wide Springs	175
Universal	-	2" Wide Springs	200
Universal	-	2 1/2" Wide Springs	250
Universal	-	3" Wide Springs	300

Model	Year	Description	Part Number
Shackle Reverse System			
CJ5	55 - 75	1 1/2" Lift	SR-180-1
CJ5, CJ7, CJ8	76 - 86	1/2" Lift	SR-180-2*
CJ For 3" Wide Springs	76 - 86	1/2" Lift	SR-180-6*
YJ Wrangler	87 - 96	1" Lift	SR-180-3*

*Welding required

LEAF SPRING U-BOLT SKID PLATES

Protect your leaf spring U-bolts with our skid plates which are designed with an innovative shock stud feature. The screw-in shock stud can be unscrewed and replaced if damaged. This saves time and the need to replace the entire skid plate.



Note: All skid plates are for original, factory, spring-under configurations.

GREASEABLE BOLTS

A Greaseable Bolt allows lubrication of the urethane and/or rubber bushings to both extend its useful life and to keep them from squeaking. Bolts and nuts are sold in pairs.



Model	Year	Description	Part #
Leaf Spring U-Bolt Skid Plates (Front Pairs)			
M38, M38A1, All CJ's	46 - 71	Spring U-Bolt Skid Plate	1705
CJ5, CJ6	72 - 75	Spring U-Bolt Skid Plate	1710
CJ5, CJ7, CJ8	76 - 81	(w/o Factory Front Sway Bar) Spring U-Bolt Skid Plate	1715
CJ5, CJ7, CJ8	76 - 81	(w/ Factory Front Sway Bar) Spring U-Bolt Skid Plate	1730
CJ7, CJ8	82 - 86	(w/o Factory Front Sway Bar) Spring U-Bolt Skid Plate	1735*
CJ7, CJ8	82 - 86	(w/ Factory Front Sway Bar) Spring U-Bolt Skid Plate	1740
YJ Wrangler	87 - 96	Spring U-Bolt Skid Plate	1745

Model	Year	Description	Part #
Leaf Spring U-Bolt Skid Plates (Rear Pairs)			
M38, M38A1, All CJ's	46 - 69	Spring U-Bolt Skid Plate	1755
CJ5, CJ6	70 - 75	Spring U-Bolt Skid Plate	1720
CJ5, CJ7, CJ8	76 - 86	Spring U-Bolt Skid Plate (except rear factory model 44 axle)	1725
YJ Wrangler	87 - 96	Spring U-Bolt Skid Plate	1750*
All Dana 44's	-	Spring U-Bolt Skid Plate (rear axle applications)	1770
All Dana 60's	-	Spring U-Bolt Skid Plate (rear axle applications)	1731

* These skid plates do not have shock studs.

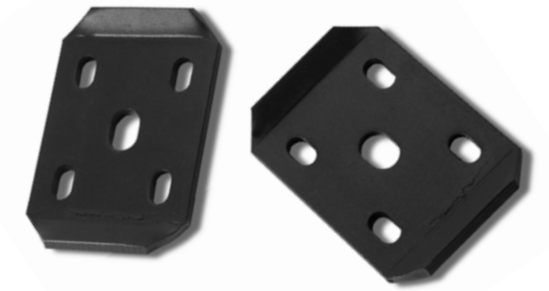
Model	Year	Description	Part #
Universal U-Bolt Plates			
Universal Pairs	-	3/8" Plate Steel HD Application	1791
Universal Pairs	-	1/4" Plate Steel Standard Applications	1792
Universal Pairs	-	3/8" Plate Steel HD for 3" Leaf Spring	1793

Model	Year	FOR SR KIT	Bushing Kits Part #	Upgraded Greaseable Kits Part #
Greaseable Bolts				
Universal	-	7/16" x 3 1/2"		90311A
Universal	-	7/16" x 5"		90306A
Universal	-	1/2" x 4"		90307
Universal	-	1/2" x 4 1/2"		90305A
Universal	-	9/16" x 4"		90314A
Universal	-	9/16" x 4 1/2"		90308A
Universal	-	5/8" x 5"		90309
Universal	-	3/4" x 5"		90315
Universal	-	3/4" x 4 1/2"		90318
Universal	-	18 mm x 110 mm x 2.0		90316
Universal	-	18 mm x 150 mm		90317

Model	Year	FOR SR KIT	Bushing Kits Part #	Upgraded Greaseable Kits Part #
Replacement Bushing Kits				
CJ5	55 - 75	SR 180-1	1801	1801A
CJ5, CJ7	76 - 86	SR 180-2	1802	1802A
CJ w/3" Wide Springs	76 - 86	SR 180-6	1806	1806A
YJ Wrangler	87 - 96	SR 180-3	1803	1803A

UNIVERSAL U-BOLT PLATES

Our Universal U-Bolt Plates are constructed of steel and available in standard (1/4") thick and heavy-duty (3/8") thick 4-wheel drive applications. Each plate is powder-coated black for lasting durability.



REPLACEMENT BUSHING KITS

To enhance the handling and ride quality of your vehicle, we offer urethane bushings for front leaf springs, frame brackets, shackle reverse systems and greaseable shackle suspension kits.





UNIVERSAL SHOCK BRACKETS

Warrior manufactures 5 styles of brackets to choose from; one folded OE styled mount designed to be welded to any axle and four different universal tab style brackets to be used on just about anything. OE styled shock mounts are die punched and formed from 11 gauge HRPO steel. The other 4 universal brackets are plasma cut from 1/4" thick steel. All brackets are sold in pairs and are left uncoated and ready to weld. Universal Shock Loops are great for replacing broken loops on your existing shock, or for any custom fabrication project you might be working on such as swaybar endlinks. Kits include two CNC lathed steel shock loops, hourglass bushings with a 5/8" inner diameter and a matching sleeve with a 1/2" inner diameter.



SHOCK ABSORBER CROSS PINS

To replace worn or broken pins, we offer cross pins in five different sizes to meet most vehicle's needs.



Model	Description	Part #
Universal Shock Brackets		
Universal	Shock Stud Kit	95
Universal	Shock Loop Kit	97
Universal	Weld On Shock Bracket	99
Universal	Weld On Shock Bracket	100
Universal	Weld On Shock Bracket	101
Universal	Weld On Shock Bracket	104
Universal	Weld On Shock Bracket	105
Universal	Shock Loops & 5/8" Hour Glass Bushings (Pair)	97

Shock Absorber Cross Pins		
H3 Hummer (Rear)	2.850" Hole to Hole	96
97 - 06 TJ Wrangler & LJ Unlimited (Rear)	3.125" Hole to Hole	106
Universal (Rear)	3.470" Hole to Hole	103
07 - 16 JK Wrangler & Unlimited (Rear)	3.3125" Hole to Hole	98
97 - 06 TJ / LJ & 84 - 01 XJ Cherokee (Front)	2.375" Hole to Hole	107

Spring Over Conversion Kits		
Universal	1.75" Wide Springs (One Axle Per Kit)	4600
Universal	2" Wide Springs (One Axle Per Kit)	4605
Universal	2.5" Wide Springs (One Axle Per Kit)	4610
Universal	3" Wide Springs (One Axle Per Kit)	4615

SPRING-OVER CONVERSION KITS

Our Spring-Over Conversion Kit comes complete with spring perches, universal spring U-bolt plates, universal shock mounts, shock bolts and coupling nuts. This kit has it all and works on most axle applications.



Model	Year	Lift	Length	Part #
Sway Bar Disconnects				
CJ7	76 - 86	Front - Stock Height	6" Eye To Eye	83011
CJ7	76 - 86	Front - 2" Lift	8" Eye To Eye	83021
CJ7	76 - 86	Front - 4" Lift	10" Eye To Eye	83031
YJ Wrangler	87 - 96	Front - Stock Height	8" Eye To Eye	83021
YJ Wrangler	87 - 96	Front - 2" Lift	10" Eye To Eye	83031
YJ Wrangler	87 - 96	Front - 4" Lift	12" Eye To Eye	83041
TJ Wrangler & LJ Unlimited	97 - 06	Front - Stock Height	6" Eye To Eye	83061
TJ Wrangler & LJ Unlimited	97 - 06	Front - 2" Lift	8" Eye To Eye	83071
TJ Wrangler & LJ Unlimited	97 - 06	Front - 4" Lift	10" Eye To Eye	83081
JK Wrangler & Unlimited	07 - 16	Front - Stock to 2" Lift	10" Eye To Eye	83085
JK Wrangler & Unlimited	07 - 16	Rear - Stock to 2" Lift	10" Eye To Eye	83087
Cherokee	84 - 01	Stock to 3" Lift	10" Post To Eye	83091

SWAY BAR DISCONNECTS

Sway Bar Disconnects are constructed with a double snapper clip for removing the entire bar quickly and for added wheel articulation. With four lengths to choose from, and vehicle-specific applications, there's sure to be a model to fit your needs. They come complete with black polyurethane bushings in two assembled bars.



TORQUE BARS

Perfect for lifted and modified suspensions, Torque Bars can improve ride ability in both on and off-road conditions. Torque Bars help prevent leaf spring deformation and possible breakage when climbing grades, under acceleration or over uneven surfaces, especially when towing heavy loads. The Torque Bars design features a removable interlocking pin that provides maximum suspension travel, simply by removing it.



Model	Year	Description	Part #
Shackle Frame Brackets			
CJ7	76 - 86	2" wide Brackets w/ Greaseable Bushings & Bolts	399
CJ7	76 - 86	Front w/2" Spring (Bolt On)	400
CJ7	76 - 86	Rear w/ 2 1/2" Spring (Bolt On)	401
CJ7 & YJ	76 - 96	Rear Fixed End Spring Bracket	402
CJ7	76 - 86	Frame Bracket, Front w/ 2 1/2" Springs (Bushings & Greaseable Bolts Included)	403
YJ Wrangler	87 - 96	Front or Rear Frame Mounts w/ Bushings & Greaseable Bolts	404
CJ7 & YJ Wrangler	76 - 96	Shackle Frame Bracket Replacement Bushing Kit	405
Torque Bars			
CJ7	76 - 86	Torque Bars	601
CJ7	76 - 86	Torque Bars (Spring Over)	602
YJ Wrangler	87 - 96	Torque Bars	603
YJ Wrangler	87 - 96	Torque Bars (w/ Lift Kit)	603A
YJ Wrangler	87 - 96	Torque Bars (Spring Over)	607

Shock Mount Conversion			
Universal	-	Shock Mount Conversion	160
Universal	-	Shock Mount Conversion w/ Bolts & Sleeves	161

Steering Stabilizer Kits			
YJ Wrangler	87 - 96	Steering Stabilizer Kit (Each)	800030
TJ Wrangler & LJ Unlimited	97 - 06	Steering Stabilizer Kit (Each)	800030
XJ Cherokee	84 - 01	Steering Stabilizer Kit (Each)	800030
JK Wrangler & Unlimited	07 - 16	Steering Stabilizer Kit (Each)	800031

Upper Control Arms			
TJ Wrangler & LJ Unlimited	97 - 06	Front Upper Control Arms (Pair)	800033
TJ Wrangler & LJ Unlimited	97 - 06	Rear Upper Control Arms (Pair)	800032

Model	Year	Lift	Front	Rear
Coil Spring Spacers				
JK Wrangler & Unlimited	07 - 16	2"	-	800041
JK Wrangler & Unlimited	07 - 16	2 1/2"	800040	-
JK Wrangler & Unlimited	07 - 16	3"	800042	800043

Coil Spring Retainer Kit			
JK Wrangler & Unlimited	07 - 16	Rear Coil Spring Retainer Kit (Pair)	800045

Track Bars & Tie Rods			
YJ Wrangler	87 - 96	Track Bar (Each)	84050
YJ Wrangler	87 - 96	Tie Rod Replacement, 24" Length (Each)	84100

SHACKLE FRAME BRACKETS

Finally, there's a leaf spring Shackle Frame Bracket that can handle the abuse! Die-formed and jig-welded from 1/4" steel, these brackets will not unwind thanks to reinforced gussets. Some bracket kits include urethane bushings and greasable bolts as well.



SHOCK MOUNT CONVERSION

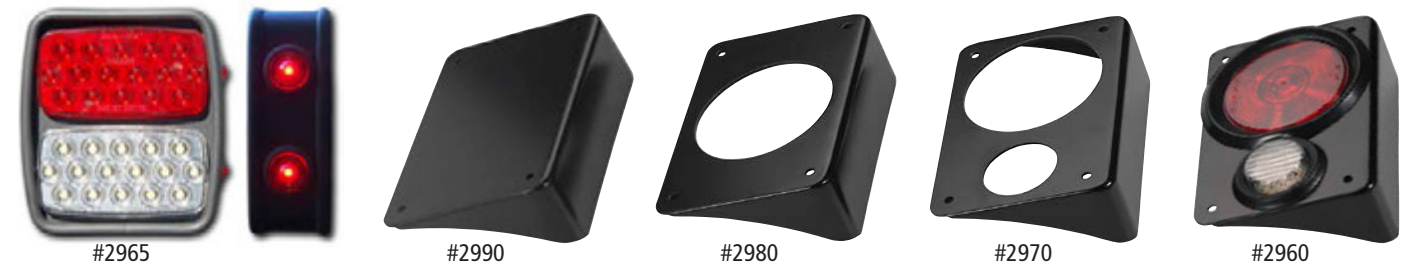
Since the factory stem-style shock mounts are notorious for breaking, this steel-formed part allows the conversion of the post mount to an eye mount for greater durability and functionality. Available in sets of two and with or without bolts and sleeves.





STEEL TAIL LIGHTS

JK Steel Tail Lights are a great replacement for your factory tail lights. Almost every trail-use Wrangler has seen a broken plastic tail light at one time or another. This great solution will provide you with a strong steel replacement that accepts most standard tail lights and/or reverse lights. Choose from 3 styles and opt to add our LED light kit accessories to complete the entire kit. Some vehicle modification may be necessary for installation.



LOAD RESISTORS

To correct potential light operational problems, Warrior has a load resistor for its LED Corner and Tube Fender Flare marker lights. Due to its lower power consumption, LED bulbs may cause some vehicles to indicate a bulb is burnt out. On the JK Wrangler for instance, a rapid flashing of the turn signal light indicates this condition. This can be remedied with load resistors wired across the LED bulbs to simulate a filament bulb load.

NOTE: Not to be used for applications with 'continuous on' lights such as marker lights.



LED LIGHT KITS

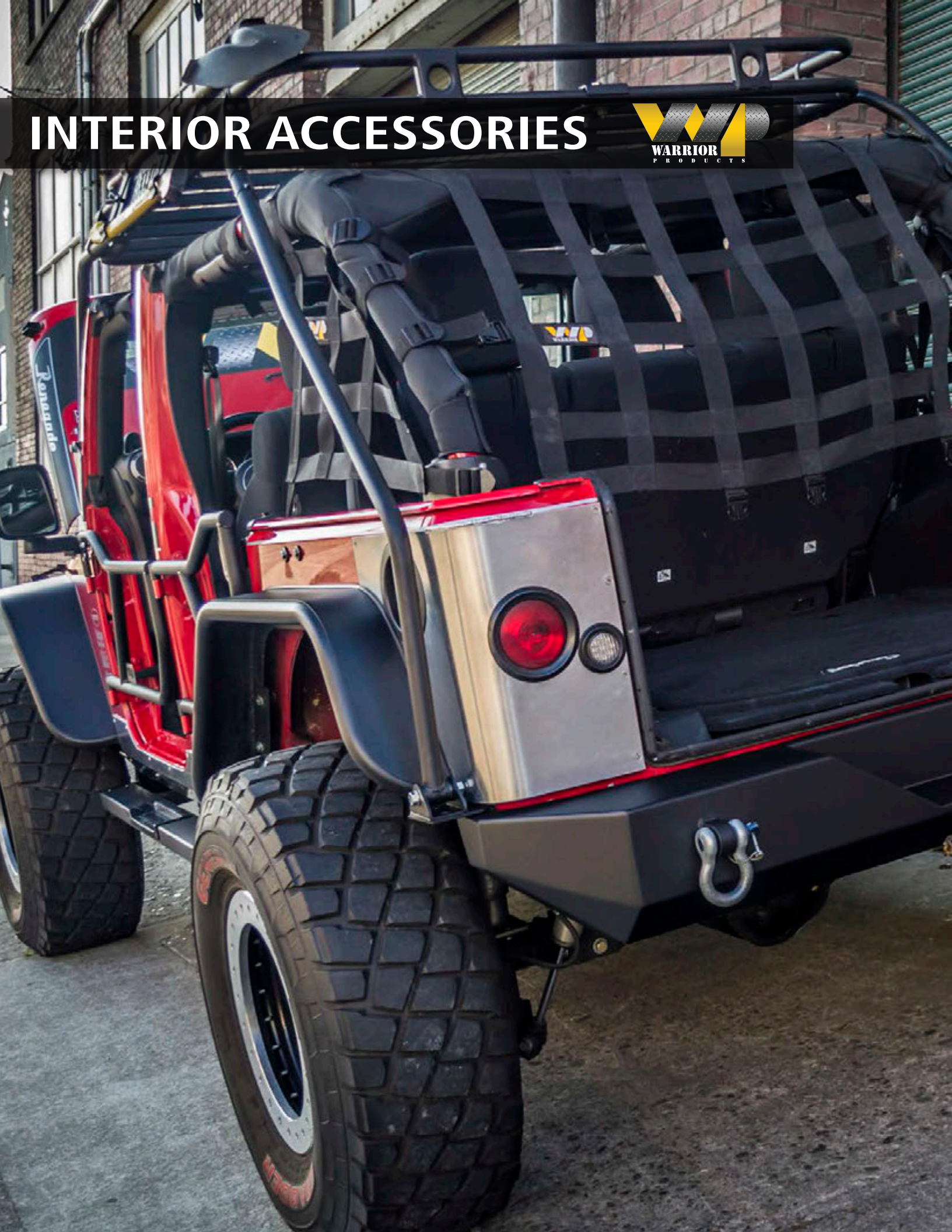
Our LED tail and reverse light kits come complete with lights, mounting grommets and wiring pigtailed. Kits are sold in pairs and are also available as a complete combo kit. Combine with our LED Cutout Rear Corners for a great new look for your Jeep Wrangler.

THIRD BRAKE LIGHT KITS

In applications where a rear-mounted spare tire is not used, the LED 3rd Brake Light Kit offers a low-profile oval LED Brake Light. For JK Owners, a center tailgate cover is available to complement the installation.

Model	Year	Description	Part Number
Steel Tail Lights			
CJ, YJ, TJ & LJ Wranglers	53 - 06	Steel Tail Light Box - Tail, Reverse & Sidemarker w/ LED Lights (Rectangular Tail & Reverse Lights) (pair)	2965
JK Wrangler & Unlimited	07 - 16	Steel Tail Light Box - Tail, Reverse & Sidemarker w/ LED Lights (Round Tail & Reverse Lights) (pair)	2960
JK Wrangler & Unlimited	07 - 16	Steel Tail Light Box - Tail Light Hole, Reverse Light Hole, Sidemarker Holes (pair w/o Lights)	2970
JK Wrangler & Unlimited	07 - 16	Led Light Kit - Tail Light & Reverse Light Only (pair)	2917
JK Wrangler & Unlimited	07 - 16	Red Side Marker Light Kit (pair)	2920
JK Wrangler & Unlimited	07 - 16	Steel Tail Light Box - Tail Light Only (pair w/o Lights)	2980
JK Wrangler & Unlimited	07 - 16	Led Light Kit - Tail Light Only (pair)	2915
JK Wrangler & Unlimited	07 - 16	Steel Tail Light Box - No Holes (pair w/o Lights)	2990
JK Wrangler & Unlimited	07 - 16	Steel Tail Light Box - Tail, Reverse & Sidemarker w/ LED Lights (Rectangular Tail & Reverse Lights) (pair)	2995
Load Resistors			
Universal	-	Load Resistor Kit (pair)	2905
LED Light Kits			
Universal	-	Led Light Kit - 2" Reverse Kit (pair)	2910
Universal	-	Led Light Kit - 4" Tail Light (pair)	2915
Universal	-	Led Light Kit 4" Tail & 2" Reverse Combo (pair)	2917
Universal	-	Red 1" Sidemarker Light Kit	2920
Universal	-	Amber 1" Sidemarker Light Kit	2925
Third Brake Light Kit			
Universal	-	Universal Spare Tire Mounted LED 3rd Brake Light Kit	1485
JK Wrangler & Unlimited	07 - 16	LED Third Brake Light Kit	1460
TJ Wrangler & LJ Unlimited	97 - 06	LED Third Brake Light Kit	1465

INTERIOR ACCESSORIES



LOCKABLE STORAGE TRUNK

The Warrior Products Lockable Storage Trunk replaces the factory storage compartment in the rear tub of the JK Wrangler with a larger, stronger and more secure trunk. It is constructed of 16-gauge HRPO steel, powder-coated black for durability and comes in a textured finish. A no-lid version is also available for use with your factory cargo lid. Installation of the kit requires an exhaust relocation kit (see parts #2240 & #2245 in the Off-Road Exhaust section) to provide ample clearance of the trunk for the vehicle's exhaust system.



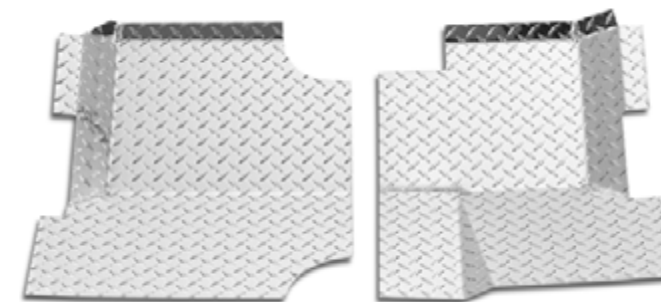
TAILGATE TABLE STORAGE SYSTEM

This fully lockable, theft-proof storage solution features interchangeable and fully customizable panels. The panels are completely removeable, making transporting your gear as easy as unscrewing four wing knobs. Stationary, load-bearing hinges provide Warrior's Tailgate Table Storage System with a shelf to keep gear in place when opening and closing the table, as well as eliminating the need for support cables/bars which may interfere with work space on the table. Also, due to the addition of rubber snubbers and riveted latches, this table will not rattle or vibrate when off-road. A complete P.A.L.S system for MOLLE / Tactical Bags and accessories maximizes the Wrangler's available cargo space. With interior and exterior storage functionality, in addition to integrated hangers on each side, the Warrior Tailgate Table Storage System provides unparalleled organization for your vehicle's cargo area. Constructed using aluminum panels with a heavy-duty, powder-coated, steel frame.



FLOOR BOARDS

Built for both the passenger and driver's side floor pan area, these floor boards cover the entire floor of the vehicle. If desired, the steel version can be modified for a complete replacement of the existing floor. On some Jeep vehicles, the gas tank, which may be under its front seat, will have to be removed to complete the installation.



HARDTOP QUICK RELEASE BOLT KIT

Warrior's new Hardtop Quick Release Bolt Kit replaces the six torx bolts along the tub rail that hold the hardtop onto the vehicle. These quick-release knobs allow you to easily prepare your hardtop for removal without tools. Washers are also included to help spread the load of the bolt and reduce the risk of cracking the top from over-tightening.

Note: The Jeep Wrangler JK Unlimited (4 Door) has two additional bolts underneath the Freedom Top panels which should be re-used.



DASHBOARDS & DASH OVERLAYS

These great looking Dash Boards, Panels, and Overlays come in several versions to customize the vehicle's dash. Constructed from sturdy aluminum or steel, these precision-stamped applications are available for Jeep CJs and Wranglers from 1955 to 2010.

Note: Due to changes to the factory dash panel, there are different applications for the early JK 07-08 and its later model JK 09-10. Each kit comes with all of the necessary mounting hardware for a complete installation.



SHIFTER COVERS

Warrior Shifter Covers are a direct factory replacement to original mounting holes with no drilling required. The covers do not include the rubber gearshift boots.

Note: For CJ7 vehicles, be sure to verify transmission, transfer case and engine designations in the application chart.

WINDSHIELD HINGE BRACKETS

For older model Jeep vehicles (CJs only), interior Windshield Hinge Brackets complement both interior and exterior product finishes. Sold in pairs.



Model	Year	Description	Diamond Plate	Black Diamond Plate	Polished Aluminum	Smooth Black Steel	Brushed Aluminum
Shifter Covers							
CJ7	80 - 86	Dana 300 TC Shifter Cover (w/o transmission cutout)	90441	90441PC	-	S90441	60441
CJ7	76 - 86	Shifter Cover (no holes)	90442	90442PC	-	S90442	60442
CJ7	80 - 86	With T176/T177 Transmission & Dana 300 TC	90443	90443PC	-	S90443	60443
CJ7	80 - 86	Dana 300 TC T4/T5 Transmission w/ 4 Cylinder	90440	90440PC	-	S90440	60440
CJ7	80 - 86	Dana 300 TC T4/T5 Transmission w/ 6 Cylinder	90444	90444PC	-	S90444	-
YJ Wrangler	87 - 96	All Shifter Covers	90740	90740PC	-	S90740	60740
YJ Wrangler	87 - 96	Shifter Cover (no holes)	90742	90742PC	-	S90742	60742
YJ Wrangler	87 - 96	Shifter Cover (Auto Transmission)	90745	90745PC	-	S90745	60745

Model	Year	Description	Diamond Plate	Black Diamond Plate	Polished Aluminum	Smooth Black Steel	Brushed Aluminum
Windshield Hinge Brackets							
CJ5, CJ7	76 - 86	Windshield Hinge Brackets (pair)	1530	1530PC	1530PA	S1530	61530

Model	Year	Description	Diamond Plate	Black Diamond Plate	Polished Aluminum	Smooth Black Steel	Brushed Aluminum
Lockable Storage Trunk							
JK Wrangler (2 & 4-Door)	07 - 11	Lockable Storage Trunk	-	-	-	2205	-
JK Wrangler (2 & 4-Door)	07 - 11	Expanded Storage Trunk Box Only (no lid)	-	-	-	2210	-

Model	Year	Description	Diamond Plate	Black Diamond Plate	Polished Aluminum	Smooth Black Steel	Brushed Aluminum
Dash Boards, Panels & Overlays							
CJ5	55 - 71	Steering Column, Gauge & Glove Box Opening w/ Door	90414	90414PC	90414PA	S90414	60414
CJ5	55 - 71	Steering Column & Glove Box Opening w/ Door	90417	90417PC	90417PA	S90417	60417
CJ5	72 - 75	Steering Column & Glove Box Opening w/ Door	90418	90418PC	90418PA	S90418	60418
CJ5, CJ7, CJ8	76 - 86	Steering Column & Glove Box Opening w/ Door (no instruments)	90419	90419PC	90419PA	S90419	60419
CJ5, CJ7, CJ8	76 - 86	Instrument Cutouts & Glove Box Opening w/ Door	90420	90420PC	90420PA	S90420	60420
CJ5, CJ7, CJ8	76 - 86	Speaker Holes & Glove Box Opening w/ Door (no instruments)	90421	90421PC	90421PA	S90421	60421
CJ5, CJ7, CJ8	76 - 86	Glove Box Opening w/ Door	90422	90422PC	90422PA	S90422	60422
CJ5, CJ7, CJ8	76 - 86	All Cutouts Mentioned Above Including Speaker Cutouts	90423	90423PC	90423PA	S90423	60423
CJ5, CJ7, CJ8	76 - 86	Dash Panel w/ Radio Cutout	90415	90415PC	90415PA	S90415	60415
CJ5, CJ7, CJ8	76 - 86	Dash Panel w/o Radio Cutout	90416	90416PC	90416PA	S90416	60416
YJ Wrangler	87 - 96	Dash Panel Overlay	90424	90424PC	90424PA	S90424	60424
JK Wrangler & Unlimited	07 - 08	Dash Panel Overlay - 2-Door w/ Power Windows	90401	90401PC	90401PA	S90401	60401
JK Wrangler & Unlimited	07 - 08	Dash Panel Overlay - 2 & 4-Door w/ Manual Windows	90402	90402PC	90402PA	S90402	60402
JK Wrangler & Unlimited	07 - 08	Dash Panel Overlay - 4-Door w/ Power Windows	90403	90403PC	90403PA	S90403	60403
JK Wrangler (2 door)	09 - 10	Dash Panel Overlay - 2-Door w/ Power Windows	90404	90404PC	90404PA	S90404	60404
JK Wrangler (2 & 4 door)	09 - 10	Dash Panel Overlay - 2 & 4-Door w/ Manual Windows	90405	90405PC	90405PA	S90405	60405
JK Unlimited	09 - 10	Dash Panel Overlay - 4-Door w/ Power Windows	90406	90406PC	90406PA	S90406	60406

Model	Year	Description	Diamond Plate	Black Diamond Plate	Polished Aluminum	Smooth Black Steel	Brushed Aluminum
Floor Boards							
CJ5	55 - 75	Floor Board	902BRD	902BRDPC	-	S902BRD	60902
CJ7	76 - 86	Floor Board	904BRD	904BRDPC	-	S904BRD	60904
YJ Wrangler	87 - 96	Floor Board	907BRD	907BRDPC	-	S907BRD	60907

Model	Year	Description	Part Number
Tailgate Table Storage System			
TJ / LJ Wrangler	97 - 06	Tailgate Table Storage System	2230
JK Wrangler & Unlimited	07 - 16	Tailgate Table Storage System	2230

Model	Year	Description	Part Number
Hardtop Quick Release Kit			
TJ Wrangler	97 - 02	Hard Top Quick Release Kit - 5/16" - 18 Thread	2940
TJ Wrangler	03 - 06	Hard Top Quick Release Kit - M8 - 1.25 Thread	2945
JK Wrangler & Unlimited	07 - 16	Hard Top Quick Release Kit - M8 - 1.25 Thread	2950

NOTE: All Polished Aluminum and Brushed Aluminum parts are considered a special order. This means that they are not an inventoried part number and will be subject to an estimated 4 week waiting period. Special orders cannot be cancelled or returned. Special order items are subject to the standard Warrior Products warranty.

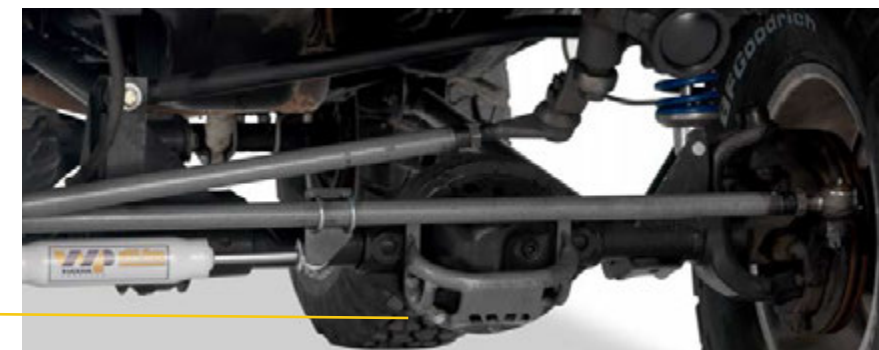


UNDERCARRIAGE



ROCK CRAWLER DIFFERENTIAL GUARDS

A must-have for protecting your differential; this guard fits over the factory differential cover to provide additional protection from rocks, stumps or anything else encountered on the trail. These guards are powder-coated in a protective hammertone gray finish. There are models to fit a variety of axles.



OFF-ROAD EXHAUST

Our Off-Road Exhaust kit relocates the straight mid-pipe section of the muffler and comes with a high-clearance tailpipe. This 2.5" diameter muffler includes a heat shield to protect the fuel evap canister and to keep heat off of the vehicle floor. The tailpipe kit includes only the high-clearance tailpipe and exhaust clamp. In order to successfully install the JK Wrangler Lockable Storage Trunk, modifications to the factory exhaust system are required.



GAS TANK SKID PLATE

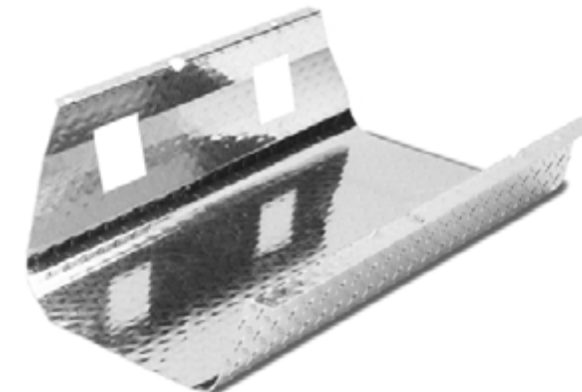
Built to exceed factory specifications by using 12-gauge HRPO steel, this 20-gallon Gas Tank Skid Plate is jig-welded and powder-coated black for lasting durability. For the YJ Wrangler only, this part replaces discontinued Chrysler # 52006870.



GAS TANK COVERS

This cover installs over the stock gas tank skid plate for added protection from the elements. It is available in all finishes as well as 15 or 20-gallon sizes. The Warrior Products Gas Tank Cover uses existing factory hardware for ease of installation.

Note: This cover adds some impact protection but is not considered a skid plate.





STEERING BOX BRACES & SKID PLATES

The Steering Box Brace provides extra rigidity by anchoring the bottom of the steering box to the opposing frame rail while the skid plate offers additional protection to the steering box when traveling off-road. Both parts are powder-coated black for lasting durability.



Model	Year	Description	Part #
Steering Box Brace & Skid Plate			
CJ5	71 - 75	Steering Box Brace (fits factory power steering boxes only)	895
CJ7	76 - 86	Steering Box Brace (fits factory power steering boxes only)	897
YJ Wrangler	87 - 96	Steering Box Brace (fits factory power steering boxes only)	898
TJ Wrangler	97 - 03	Steering Box Brace (fits factory power steering boxes only)	896
TJ & Unlimited	04 - 06	Steering Box Brace (fits factory power steering boxes only)	893
Cherokee	84 - 01	Steering Box Brace (fits factory power steering boxes only)	894
YJ Wrangler	87 - 96	Steering Box Skid Plate (Modifications may be required for manual steering boxes)	1785
TJ Wrangler & LJ Unlimited	97 - 06	Steering Box Skid Plate (Modifications may be required for manual steering boxes)	1786

Rock Crawler Differential Guards			
Universal	-	AMC 20 Differential Guard	7020
Universal	-	Dana 30 Differential Guard (Does not fit Jeep Wrangler JK/JKU Dana 30 Front)	7030
Universal	-	Dana 35 Differential Guard	7035
Universal	-	Dana 44 Differential Guard (Does not fit Jeep Wrangler JK/JKU Dana 44 Front)	7044
Universal	-	Dana 60 Differential Guard	7060
Chrysler	-	Chrysler 8.25 Differential Guard	7082
Ford	-	Ford 8.8 Differential Guard	7088

Off-Road Exhaust			
JK Wrangler & Unlimited	07 - 11	Off-Road Exhaust System	2240
JK Wrangler & Unlimited	07 - 11	Off-Road Tailpipe Kit	2245

Note: Off-Road Exhaust Kit may work with 2012 - 2016 Jeep Wrangler JK / JKU. Additional modification and fabrication may be required.

Gas Tank Skid Plate			
YJ Wrangler	87 - 96	15 Gallon and 20 Gallon Gas Tank Skid Plate	90710

Model	Year	Description	Diamond Plate	Black Diamond Plate	Smooth Black Steel
Gas Tank Covers					
CJ7	76 - 86	15 Gallon Gas Tank Cover	904GTC	904GTCPC	S904GTC
CJ7	76 - 86	20 Gallon Gas Tank Cover	907GTC20	907GTC20PC	S907GTC20
YJ Wrangler	87 - 96	15 Gallon Gas Tank Cover	907GTC	907GTCPC	S907GTC
YJ Wrangler	87 - 96	20 Gallon Gas Tank Cover	907GTC20	907GTC20PC	S907GTC20
TJ Wrangler & LJ Unlimited	97 - 06	20 Gallon Gas Tank Cover	916GTC20	916GTC20PC	S916GTC20

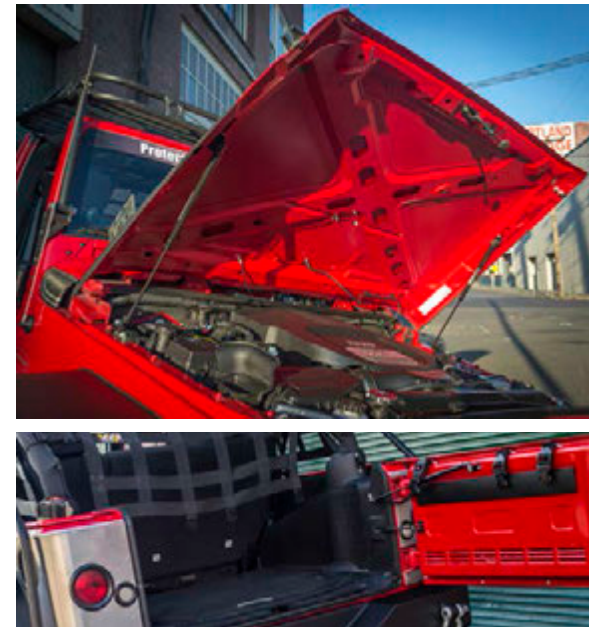


HOOD LIFT

WARRIOR PRODUCTS

Started in 1994, HoodLift is the original gas spring powered strut system for the Jeep CJ7 and Wrangler. In 2006, the new platform of Wrangler was released and dubbed the JK. Almost immediately after its release, HoodLift developed systems to not only lift the hood of this new Jeep, but additional tailgate systems were released to counteract the constantly closing rear gates of the JK. Today, HoodLift has expanded to offer several car, truck, and SUV applications in order to bring this high-quality, functional product to all types of vehicles.

The HoodLift by Warrior line includes hood lift kits and tailgate systems for the Cherokee, CJ, YJ, TJ, and JK along with kits for various cars, trucks, and SUVs. High-quality gas springs that are used alongside strong mounting systems and backed by HoodLift's unrivaled customer service!



Model	Year	Description	Part #
HoodLift Kit			
CJ & YJ Wrangler	76 - 96	Hoodlift Kit	HL 99836
TJ Wrangler	97 - 06	Hoodlift Kit	HL 99837
LJ Unlimited	04 - 06	Hoodlift Kit	HL 99837
Cherokee	84 - 96	Hoodlift Kit	HL 95605
Cherokee	97 - 01	Hoodlift Kit	HL 95606
Liberty	08 - 13	Hoodlift Kit	HL 90520
JK Wrangler & Unlimited (OEM Hood)	07 - 16	Hoodlift Kit	HL 95691
JK Wrangler & Unlimited (AEV Hood)	07 - 16	Hoodlift Kit	HL 93111
Tailgate Strut Kits			
YJ Wrangler	87 - 96	Tailgate Kit	HL 93106
TJ Wrangler	97 - 06	Tailgate Kit	HL 93106
LJ Unlimited	04 - 06	Tailgate Kit	HL 93106
JK Wrangler & Unlimited	07 - 16	Tailgate Kit	HL 93109
Combo Kits			
YJ Wrangler	87 - 96	Hoodlift Kit & Tailgate Kit Combo	HL 99835
TJ Wrangler	97 - 06	Hoodlift Kit & Tailgate Kit Combo	HL 99838
LJ Unlimited	04 - 06	Hoodlift Kit & Tailgate Kit Combo	HL 99838
JK Wrangler & Unlimited (OEM Hood)	07 - 16	Hoodlift Kit & Tailgate Kit Combo	HL 93110
JK Wrangler & Unlimited (AEV Hood)	07 - 16	Hoodlift Kit & Tailgate Kit Combo	HL 93112

FLEX ARMOR



TIRE COVERS

Let Team Warrior protect your adventure lifestyle with a form-fitting polycotton-backed vinyl Tire Cover. Available in a wide variety of sizes to accommodate tires from 28" to 37".



WARRIOR APPAREL

Hats, T-Shirts, and Hoodies available in sizes from Small to XXL. The same apparel worn by Warrior Staff!



COMBO & HAND GRIPS

Combo and individual Hand Grips fit 3" diameter tubing and have adjustable straps. The combo grip can hold a fire extinguisher and has one detachable hand grip. Both grips can be attached anywhere on the safety cage of the vehicle.



BREEZER TOPS

Breezer Tops are the best mesh-style roll bar tops on the market today. Custom fitted and constructed of a durable material that allows airflow, breezer tops offer a sun-protected, comfortable drive. For Wranglers, Maxi breezer tops go full-length over the rear seat.



ADVENTURE TUBE DOOR MESH & PADDING KITS

The padding kits also affix to the Adventure doors and not only provide functionality, but stylish good looks too. The padding kits feature a zippered pocket and are available in a host of colors to complement any vehicle. The mesh kits affix to the Adventure Tube Doors to help deter debris and wind from entering the vehicle. They also allow its driver to see obstacles through the door. [See specification chart in the Doors section on page 12 for further details.](#)



UNIVERSAL PADDING KITS

Designed to fit 1" - 1 1/4" tubing, these padding kits are available in multiple lengths and colors to accommodate full or partial coverage.





CARGO NETTING

The Cargo Netting systems, available from Flex Armor by Warrior, are designed to keep pets, property and passengers safe and secure inside the vehicle. Flex Armor Cargo Netting makes the most of the limited space in your Jeep and the individual sections of Cargo Netting can be mixed-and-matched to fit individual needs. Flex Armor Cargo Netting systems are handmade here in the USA and consists of high-quality materials, heavy duty buckles and mounting hardware.



Model	Year	Part #				
Cargo Netting		Center Cage Net	Side Cage Net	Front Seat Divider	Basic Cargo Cover	Mesh Cargo Cover
TJ Wrangler	97 - 06	40502	40602	*40702	40802	40852
JK Wrangler 4-Door	07 - 16	40500	40600	*40700	40800	40850
JK Wrangler 2-Door	07 - 16	40501	40601	*40701	40801	40851

Model	(D x W)	Description : Metric Range	WP Black
Tire Covers			
Universal 28"	(28" x 8")	Fits tire sizes : 205 to 215/75R15	90816
Universal 29"	(29" x 9")	Fits tire sizes : 225 to 235/75R15	90818
Universal 30"	(30" x 10")	Fits tire sizes : 225 to 245/75R16	90820
Universal 31"	(31" x 11")	Fits tire sizes : 255 to 275/75R16	90822
Universal 32"	(32" x 11.5")	Fits tire sizes : 270 to 290/75R16	90829
Universal 33"	(33" x 12")	Fits tire sizes : 285 to 305/75R16	90824
Universal 35"	(35" x 12.5")	Fits tire sizes : 255/70R to 315/75R16	90826
Universal 37"	(37" x 13")	Fits tire sizes : 275/70R to 315/85R16	90828

Note: WP = Warrior Products logo

Combo & Hand Grips

Universal	-	Hand Grip w/ extinguisher holder	4402
Universal	-	Hand Grip - individual	4403

Winch Solenoid Cover

Universal	-	Warrior Products Winch Solenoid Cover	4407
-----------	---	---------------------------------------	------

Model	Year	Description	Part #
Breezer Tops			
CJ5	55 - 75	Breezer Top	1100
CJ5	76 - 83	Breezer Top	1105
CJ7, YJ	76 - 91	Breezer Top	1110
YJ Wrangler	92 - 96	Breezer Top	1115
TJ Wrangler	97 - 02	Breezer Top	1120
TJ Wrangler	03 - 06	Breezer Top	1126
JK Wrangler	07 - 16	Breezer Top	1165
JK Unlimited	07 - 16	Breezer Top	1170
YJ Wrangler	92 - 96	Maxi Breezer Top	1135
TJ Wrangler	97 - 02	Maxi Breezer Top	1140
TJ Wrangler	03 - 06	Maxi Breezer Top	1145
LJ Unlimited	04 - 06	Maxi Breezer Top	1150

Note: All Breezer Tops come in a black mesh material.

Model	Year	Description	Part #	
Universal Padding Kits			Black	Camo
Universal	-	12" tube length (pair)	90804	90805
Universal	-	18" tube length (pair)	90807	90808
Universal	-	24" tube length (pair)	90810	90811

Model	Year	Description	Part #					
Apparel			Small	Medium	Large	XL	2XL	3XL
T-Shirt	-	Black WP T-Shirt	1933	1937	1938	1932	1939	1940
Ladies V-Neck T-Shirt	-	Ladies WP V-Neck T-Shirt	1952	1925	1926	-	-	-
Hooded Sweatshirt	-	Black WP Logo Hooded Sweatshirt	1921	1922	1923	1924	-	-
Baseball Cap	-	Black WP Logo Hat - Flex Fit	1916	1916	1917	1917	-	-

NEW PRODUCT SHOWCASE



Jeep JK Tow Bar Mounting System

Part Number: #1861

The Warrior Products Tow Bar Mounting System allows Jeep Wrangler JK owners to flat-tow the vehicle behind a motor home, camper, or truck with a factory or aftermarket bumper. This system is compatible with the Warrior Products #860 Tow Bar and all Warrior Products' Front Bumpers for the Jeep JK.



Universal Spare Tire Mounted LED 3rd Brake Light

Part Number: #1485

The Warrior Universal LED 3rd Brake Light attaches directly to the spare tire mount on the back of most vehicles. Fitted with a high-quality LED light, this product is considerably brighter than the OEM bulbs. In addition, this product is water and impact resistant tailored to your adventure lifestyle. This product includes all required mounting hardware and LED lights for installation.

Universal Off-Road Jack Mount

Part Number: #4870

Warrior Products' Universal Off-Road Jack Mount is a lockable bracket system that allows the popular Off-Road Jack to be mounted in a wide variety of ways; either inside or outside the vehicle. This product can essentially be mounted on any flat surface capable of supporting the weight of the Off-Road Jack. In addition, like all Warrior Products, this Universal Off-Road Jack Mount is 100% Made in the USA.

Tailgate Table Storage System

Part Number: #2230

The Warrior Products Tailgate Table Storage system offers a unique solution for mounting tactical bags, tools, camping equipment, trail gear, and fluids while providing a fully lockable, fold-out table; maximizing the limited storage capacity of the Jeep. Like all Warrior Products, the Universal Tailgate Table is 100% designed, welded, and manufactured in the USA. This product includes all required mounting hardware and is finished in a blend of powder-coated steel and bare aluminum. Fits all 1997 - 2016 Jeep Wranglers.



Jeep CJ/YJ/TJ Steel LED Tail Lights - Part #2965

Warrior Products Steel LED Tail Light Kits give Jeep CJ / YJ / TJ owners a rugged LED look, added functionality, and unrivaled protection provided by the steel housing. Powder-coated black, these steel housings are made in the USA and come complete with all LED lights and required installation hardware.

FJ Cruiser Steel LED Tail Lights - Part #3965

Warrior Products Steel LED Tail Light Kits give Toyota FJ Cruiser owners a rugged LED look, added functionality, and unrivaled protection provided by the steel housing. Powder-coated black, these steel housings are made in the USA and come complete with all LED lights and required installation hardware.

JK Steel Tail Lights

Part #2960

Warrior Products Steel LED Tail Light Kits give Jeep JK / JKU owners a rugged LED look, added functionality, and unrivaled protection provided by the steel housing. Powder-coated black, these steel housings are made in the USA and come complete with all LED lights and required installation hardware.



JK Steel Tail Lights

Part #2995

This Warrior Products Steel LED Tail Light Kit features rectangular tail and reverse lights, coupled with round sidemarkers, for a classic look and feel to the rear of the Jeep Wrangler JK/ JKU. Housing powerful LED's, this steel, powder-coated box is ready for any rugged off-road trail.