

2021 PRODUCT CATALOG



PARTS, TOOLS & TECHNOLOGY TO HELP YOU WIN RACES!

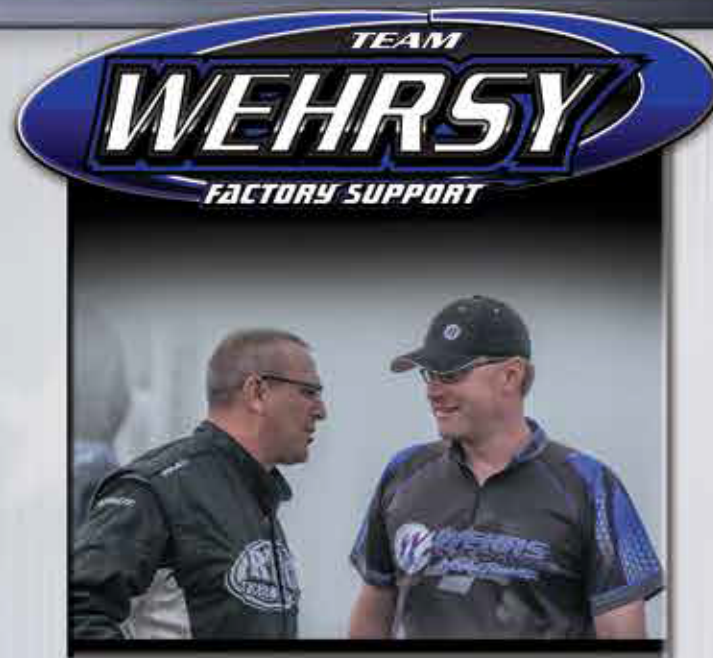
AMERICAN MADE INNOVATION SINCE 1997

MADE IN WISCONSIN

Team Wehrsy Factory Support travels to many races each year to show our products and service our Team. If you see us at a track stop by and check out our products.

Thanks for taking a look at our product catalog. We have been making innovative racing products for over 23 years for racers all over the world. We have some fresh ideas for you to check out in the new products section, let us know what you think. All of the parts that we manufacture are made in Bangor, WI in the U.S.A.! I encourage you to support American Made Products and help keep this country rolling. I hope you have a great season in 2021 and remember to Keep the Faith in Jesus Christ!

Thanks, Wehrsy



WEHRSY MACHINE IS ONLINE - FIND US
FOLLOW US - SEE WHAT'S NEW!!

TABLE OF CONTENTS

NEW PRODUCTS 3-7
PINION MOUNTS 8-12
PANHARD BARS 13-14
FRAME MOUNTS 15-17
TOOLS 18-26
ENGINE 27-29
CARB PARTS 30-32
TRANSMISSION 33-34
ACCESSORIES 35-40
BODY ACCESSORIES 41-44
4-LINK SUSPENSION 45-48
2-LINK SUSPENSION 49
BRAKE BRACKETS 50-51
CLAMPS 52-53
CHASSIS 54-63
WHEEL SPACERS 64
TRAVEL LIMITERS 64-66
PULL BARS 67-68
SPRING CUPS 69-71

Spring Pull Bar with Spring and Pucks

This is our spring bar complete with Afco or Eibach spring and our pucks for tuning the traction on your modified.

- WM560CA SPRING BAR COMPLETE WITH AFCO SPRING
- WM560CE SPRING BAR COMPLETE WITH EIBACH SPRING



Steel Hood Pin with Flange

This is our new 4" steel hood pin for a high strength right front hood pin option.

- WM2594-STL STEEL HOOD PIN 4" LONG W/SHOULDER



Female Threaded Body Mount with Flange

This is our new body mount with flange for mounting body panels. This mount has a 1/2" pin size and accepts a standard 3/16" hood pin clip. Back side is threaded 1/4"-20 for attaching to your car.

- WM463 1/4"-20 THREADED BODY MOUNT W/ FLANGE

Bearing and Seal Install Tool

This Austin Kuehl inspired trick new tool needs to be in every racer's tool box! This billet aluminum install tool will work for transmission seals, pinion seals, suspension cage bearings, and Wide 5 and Grand National hub seals.

- WM461 BEARING / SEAL INSTALL TOOL



3-Piece Spindle Ball Joint Remover

Our new ball joint remover is designed for the Speedway Short Arm Metric Spindle and the GM Metric Midsize Spindle. With the nut off the lower ball joint, simply place the remover between ball joint tips, apply pressure, tap the spindle, and the ball joint pops out. You then flip tool over and add the extension to remove the upper ball joint.

- WM130-S BALL JOINT REMOVER SPEEDWAY SPINDLE





Automatic Calculating Stagger Gauge

Our new Dan Fredrickson inspired Auto-calculating stagger gauge is a cool tool! Our Patent Pending stagger gauge allows you to measure stagger in seconds. Simply measure one tire then hit button to hold that circumference, measure the second tire and the stick will display that circumference and the stagger.

WM36 STAGGER STICK



Thermostat Riser with AN Bung

This is our thermostat riser with the AN bung welded to it for a clean one piece option when running a braided line.

- WM3925016 RISER WITH 1/4" PORTS AND -16AN BUNG**
- WM3925020 RISER WITH 1/4" PORTS AND -20AN BUNG**
- WM3937516 RISER WITH 3/8" PORTS AND -16AN BUNG**
- WM3937520 RISER WITH 3/8" PORTS AND -20AN BUNG**



Jam Nut Wrench

Small 1-1/8" 12-point wrench for our 1" jam nuts.

WM4910W 1-1/8" WRENCH FOR 1" JAM NUTS



Hood Pin Locator

Our New Steve Carlson inspired hood pin locator is a cool tool! Tool wraps around the hood and has a lower plate that slips over the hood pin and an upper plate that locates the center of the hood pin with a marker or by using your 3/16" drill to spot the center. Tool has locations for both 3/8" and 1/2" hood pins and has a 4-1/2" reach.

WM66 HOOD PIN LOCATOR

Rochester Carb Hat

This is our new Steve Reynolds inspired carb hat for Rochester 2 barrel carbs.

WM155 ROCHESTER CARB HAT



Modular Aluminum Rear T-Bar

This is our new aluminum modular rear T-bar. This 5-piece design makes crash repair simple and inexpensive by replacing the section of tubing that is wrecked instead of the entire T-bar. This is available as a kit with our T-bar adjusters or with solid adapter ends for tabs on chassis.

- WM468 MODULAR ALUMINUM REAR T-BAR**
- WM468-A MODULAR ALUM REAR T-BAR WITH ADJUSTERS**
- WM468-G GUSSET BRACE FOR T-BAR**
- WM468-4 HOOD PIN MOUNTING TAB FOR T-BAR KIT**
- WM468-T-3 3' LONG ALUM TUBE FOR T-BAR**
- WM468-T-40 40" LONG ALUM TUBE FOR T-BAR CENTER**



Asphalt Late Model Trailing Arm Frame Mount

These Ed Holmes inspired climbing trailing arm brackets allow you to fine tune your setup. Brackets come with climber hardware.

- WM462-L LEFT REAR CLIMBING TRAILING ARM MOUNT**
- WM462-R RIGHT REAR CLIMBING TRAILING ARM MOUNT**

OD Alignment Spring Cups

These are our new OD grab spring cups. They keep the spring straight through travel and allow you to run our WM165BO bearing to let the spring twist through travel.

- WM485S 5" SHORT SWIVEL CUP OD ALIGNMENT**
- WM485S-5.5 5-1/2" SHORT SWIVEL CUP OD ALIGNMENT**
- WM485T 5" TALL SWIVEL SPRING CUP OD ALIGNMENT**
- WM485T-5.5 5-1/2" TALL SWIVEL CUP OD ALIGNMENT**
- WM404SC 5" BOLT IN SHORT CUP OD ALIGNMENT**



Idler Arm Bolts

This Paul Berger inspired bolt is the answer to your idler arm needs. This bolt extends the hex end of the bolt out of the frame rail, allowing you to remove the bolt without losing your socket or fighting the frame rail.

- WM467C CHEVELLE STUB IDLER ARM BOLT**
- WM467M METRIC STUB IDLER ARM BOLT**



-6AN and -8AN Male Breathers

Our new male breathers for -6AN and -8AN screw into your breather line from your rear end or fuel cell. We use a filter made in the USA!

- WM128-6 MALE -6AN BREATHER FITTING W/ FILTER
- WM128-8 MALE -8AN BREATHER FITTING W/ FILTER
- UP-104 5/8" ID FILTER FOR WM128



Male Threaded Body Mount

Our Paul Burger designed threaded body mount for mounting body panels. Mount has 5/16"-18 coarse thread and 1/2" pin size. Takes a standard 3/16" hood pin clip. Comes with nyloc nut.

- WM135 THREADED BODY MOUNT

Screw Jack with Shock Mount Swivel

This is our new 5/8"-18 swivel mount that can be easily adjusted to control bump stop engagement and shock extension.

- WM465 SCREW JACK WITH SWIVEL 5/8"-18



Sheet Metal Marker Tools

Our new sheet metal tools will save you countless time when marking your sheet metal cuts and bends. The WM451 radius tool has 4 radius marking options which are 1/4", 1/2", 3/4" and 1" radius measurements. The WM453 notch marker tool has 4 notch size options which are 1/2", 3/4", 1" and 1-1/2" square. The Nic Pyka inspired WM454 45 degree marker has 4 size options which are 1/4", 1/2", 3/4" and 1" measurements. These three markers are offered in a set: WM45134. The Josh Angst inspired WM466 bend line marker will mark a line at 1/2", 3/4", 1", and 1-1/4" from the end of your sheet by dragging along the end of sheet with sharpie in the hole



- WM451 SHEET METAL CORNER RADIUS MARKER
- WM453 SHEET METAL CORNER NOTCH MARKER
- WM454 SHEET METAL CORNER 45 DEG MARKER
- WM45134 SHEET METAL MARKER SET OF 3
- WM466 SHEET METAL BEND LINE MARKER



Ratcheting Bump Steer Stick

Our new bump steer stick is a simple way to move your suspension when setting bump steer. No more falling off the bottle jack!

- WM414-7-R-BSS RATCHETING BUMP STEER STICK



Pull Bar High-Misalignment Spacers

These Joel Rust inspired spacers for 5/8" bolt and 3/4" heim keep you from fumbling spacers around when mounting/changing pull bars. Available in 1/2", 1", 1-1/2", 2", 2-1/2", 3", and 3-1/2" lengths for any offset desired. Our WM625QA100 spacer converts the 1" hole in our WM292QC brackets down to 5/8".

- WM625290S 3/4" HM SPACER 5/8" ID 1/2" LONG
- WM750100HM625 3/4" HEIM 5/8" ID 1" LONG HM SPACER
- WM7501500HM625 3/4" HEIM 5/8" ID 1-1/2" LONG HM SPACER
- WM750200HM625 3/4" HEIM 5/8" ID 2" LONG HM SPACER
- WM7502500HM625 3/4" HEIM 5/8" ID 2-1/2" LONG HM SPACER
- WM750300HM625 3/4" HEIM 5/8" ID 3" LONG HM SPACER
- WM7503500HM625 3/4" HEIM 5/8" ID 3-1/2" LONG HM SPACER
- WM625QA100 5/8" QUICK ADJUST PUCK FOR 1" OD



Scorezit™ is The Ultimate Scorekeeper for any backyard game. The Scorezit™ will score any game up to 21 points per team. Made in the USA from high quality steel and aluminum the Scorezit™ will last a lifetime. The Scorezit™ comes standard with Billet Score Knobs, two spots for holding drinks, a dual cell phone holder slot and a bottle opener. Scorezit™ comes standard with our hard surface base.





Aluminum Left Side High Q/C Pinion Mount

Slot is 5" left of centerline. Top of slot is 2" above centerline and the bottom is 1" below centerline. Quick adjust climber for fast adjustments. Climber hardware included.

WM181 QC PINION MOUNT HIGH LEFT



Double Slot Low Aluminum Q/C Pinion Mount

Just like our WM211 but gives you the option of the shorty bar on the left side of the pinion. Climber hardware included.

WM211DS DOUBLE SLOT LOW ALUMINUM QC PINION MOUNT



Aluminum Q/C Pinion Mount

This aluminum pinion mount moves the J-Bar slot as tight to the center section as possible like our WM407 steel mount.

WM307 ALUMINUM PINION MOUNT

Aluminum Left Side Low Q/C Pinion Mount

Slot is 5" left of center line. The top of the slot 1" above center line and the bottom 2" below center line. This quick change mount utilizes our standard climber design. Climber hardware included.

WM177 QC PINION MOUNT LOW LEFT



Raised Right Side Aluminum Pinion Mount

This aluminum single sided climber has a raised slot for lift arm clearance. Slot is the same as our WM205 raised up 1" and comes with the hardware.

WM345 RAISED RIGHT SIDE PINION MOUNT



Double and Triple Right Side Aluminum QC Pinion Mounts

Want to be able to move the mounting location of your J-bar on the pinion farther to the right? This Billy Vacek inspired tweak to our standard WM205 mount allows you to move the mounting location on the pinion 2 1/2" farther to the right when needed and still have the standard location. Now available as a triple option with another slot 2-1/2" further. Both mounts come with the clamp and support strut to the axle for strength.

WM205DRS DOUBLE RIGHT SIDE ALUMINUM QC PINION MOUNT

WM205TRS ALUMINUM TRIPLE RIGHT SIDE PINION MOUNT



Aluminum Left Side Angled Q/C Pinion Mount

Allows you to mount panhard bar at an angle off the left side. Climber hardware included.

WM197 ANGLED PINION MOUNT W/CLIMBER

WM197-2 ANGLED PINION MOUNT W/CLIMBER 2" TALLER



Aluminum Q/C Pinion Mount

Single side quick change pinion mount with climber on an arc. Slot goes 1 1/2" below pinion centerline. Climber hardware included.

WM205 PINION MOUNT

Aluminum Low Q/C Pinion Mount

Go low with our quick change pinion mount. This works with our climber on an arc to keep your track lined up and allows you to run the panhard bar 2 1/2" below centerline of the pinion. Climber hardware included.

WM211 LOW QC PINION MOUNT



Aluminum Q/C Pinion Mount

Same as WM205 with a bottom hole below center of pinion.

WM205BH PINION MOUNT W/ BOTTOM HOLE

Aluminum Double Sided Q/C Pinion Mount

Same as our WM205, but with an added slot on the left side of the pinion to allow a short panhard bar using the same mount. Climber hardware included.

WM205DS DS CLIMBER PINION MOUNT



Aluminum Dual Usage Q/C Pinion Mount

A Wehrs original concept in pinion mounts to save you some money. This pinion mount is built with 2 identical sides so in the case of an accident you can unbolt the mount, flip it 180 degrees and you have another good side instead of having to buy 2 mounts to have a spare. Comes with climber hardware.

WM205DU DUAL USAGE PINION MOUNT



Steel Quick Change Pinion Mount

Our billet steel QC pinion mount moves the J-Bar slot as tight to the center section as possible. Mount is also machined with seal installed to eliminate the seal plate. Comes with climber hardware.

WM407 STEEL PINION MOUNT



Steel Quick Change Pinion Mount

Our billet steel QC pinion mount. This profile matches our WM219 mount and is machined with the seal installed in it to eliminate the seal plate like our standard steel mounts use. Comes with climber gear hardware.

WM419 STEEL PINION MOUNT



Quick Change Seal Plate

Our pinion seal plate pairs with our WM219 steel QC pinion mounts, providing the lightest and strongest option available. Comes with O-ring.

WM219SP QC SEAL PLATE



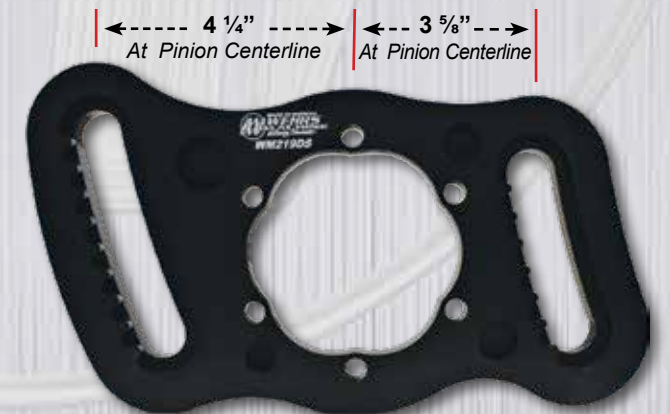
WM205BN BACK NUT FOR ALUMINUM PINION MOUNTS
WM205CG CLIMBER GEAR
WM205BK BOLT KIT FOR ALUMINUM PINION MOUNTS



Steel Q/C Pinion Mount

Our standard steel quick change mount works on an arc, using a climber gear for easy and fast adjustments, while keeping your tracking right. Made of high grade steel for unmatched strength. Climber hardware included.

WM219 STEEL QC PINION MOUNT



Steel Double Sided Q/C Pinion Mount

Same as our WM219, however also with an added slot on the left side of the pinion to allow a short panhard bar using the same mount. Climber hardware included.

WM219DS QC PINION MOUNT ARC



Don't over loosen when adjusting a climber mount you will damage the gear.

Steel Ford 9" Pinion Mount

Ford 9" pinion mount with a 4" climber slot on an arc, allowing for quick adjustments while keeping the track right. Climber hardware included.

WM230 FORD 9" MOUNT



Steel Ford 9" Double Sided Pinion Mount

Same Right Side slot as our standard WM230 with the Left Side shorty bar option. Quick adjust climber style hardware is included.

WM230DS DOUBLE SIDED MOUNT



Steel Ford 9" Pinion Mount with Bottom Hole

Ford 9" pinion mount with bottom hole has a 4" climber slot on an arc for quick adjustments while keeping the track right. Climber hardware included.

WM230BH BOTTOM HOLE MOUNT



- WM219BN BACK NUT FOR STEEL PINION MOUNTS
- WM205CG CLIMBER GEAR
- WM219BK BOLT KIT FOR STEEL QC PINION MOUNTS
- WM230BK BOLT KIT FOR STEEL FORD 9" PINION MOUNTS

Adjustable Aluminum J-Bar

Original Jimmy Mars designed aluminum double adjusting J-Bar. Superior in strength, adjustability, and versatility to any other brand on the market. **Zero failures in 20 Years!** Adjust the bar length 2" without disconnecting from the frame. Available in 4" and 5" drops.



4" Drop Bodies

BODY #1

- WM4016-18 Body #1 with WM40A 5 1/2" Adjuster 17" Center to Center
- WM4017-19 Body #1 with WM40AM 6 1/2" Adjuster 18" Center to Center
- WM40BODY-1 Aluminum body #1 only 12" long with monoball (no adjuster)

BODY #2

- WM4018-20 Body #2 with WM40A 5 1/2" Adjuster 19" Center to Center
- WM4019-21 Body #2 with WM40AM 6 1/2" Adjuster 20" Center to Center
- WM40BODY-2 Aluminum body #2 only 13 1/2" long with monoball (no adjuster)

BODY #3

- WM4020-22 Body #3 with WM40A 5 1/2" Adjuster 21" Center to Center
- WM4021-23 Body #3 with WM40AM 6 1/2" Adjuster 22" Center to Center
- WM4022-24 Body #3 with WM40AL 7 1/2" Adjuster 23" Center to Center
- WM4024 Body #3 with 5" Tap Tube 24" Center to Center
- WM4025 Body #3 with 6" Tap Tube 25" Center to Center
- WM4026 Body #3 with 7" Tap Tube 26" Center to Center
- WM40BODY-3 Aluminum body #3 only 15 1/2" long with monoball (no adjuster)

Longer bars available, just add length to 3/4" tap tube. Call us for details on longer bars.



5" Drop Bodies

BODY #5

- WM40517-19 Body #5 with WM40A 5 1/2" Adjuster 18" Center to Center
- WM40518-20 Body #5 with WM40AM 6 1/2" Adjuster 19" Center to Center
- WM40519-21 Body #5 with WM40AL 7 1/2" Adjuster 20" Center to Center
- WM40521 Body #5 with 6" Tap Tube 21" Center to Center
- WM40522 Body #5 with 7" Tap Tube 22" Center to Center
- WM40523 Body #5 with 8" Tap Tube 23" Center to Center
- WM40BODY-5 Aluminum body #5 only 12 1/2" long with monoball (no adjuster)

BODY #6

- WM40BODY-6 Aluminum body #6 only 14 1/2" long with monoball (no adjuster)
- Same 5" drop as Body #5 with 1" spread in the middle.



Adjustable Steel J-Bar

Just like our aluminum one, only made out of steel DOM tubing. Bars have two inches of adjustment like the aluminum one - just a little heavier.

- WM40S18-20 BODY #1 W/ WM40A
- WM40S19-21 BODY #1 W/ WM40AM
- WM40S20-22 BODY #2 W/ WM40A
- WM40S21-23 BODY #2 W/ WM40AM
- WM40S22-24 BODY #2 W/ WM40AL
- WM40SBODY-1
- WM40SBODY-2 BARE BODY #2 15½" LONG WITH MONOBALL (NO ADJUSTER)



¾" Double Adjusters

Machined Stainless Steel. These adjusters have 2½" of RH ¾"-16 thread and 2½" of LH ¾"-16 thread. Short one is 5½", medium is 6½", and long is 7½".

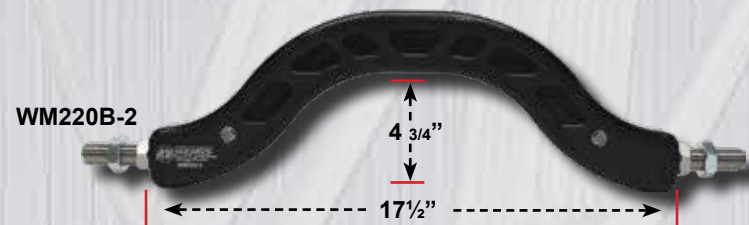
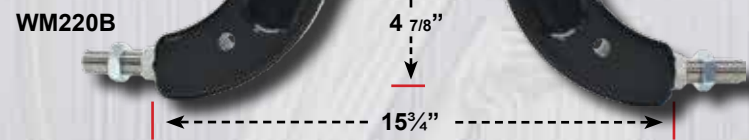
- WM40A SHORT ADJUSTER 5½" LONG
- WM40AM MEDIUM ADJUSTER 6½" LONG
- WM40AL LONG ADJUSTER 7½" LONG



Aluminum Panhard Bar Loop

Our billet loop has 1" offset with ¾" fine thread stud on each end to run tap tubes and heims that will create a panhard bar from 15" to 40" long. Bar comes with two studs and you buy the tap tube lengths that fit your car.

- WM153 PANHARD BAR LOOP
- WM153S PANHARD BAR STUD



Anti-Seize all threaded parts.

Over the Top Panhard Bar

Our over the top panhard bar gives you the ultimate in adjustability and strength. We now build 3 versions of this panhard bar with a wider center opening for forward angled bar driveshaft clearance and also a shorter drop for upper link clearance.

- WM220B STANDARD BAR (BAR ONLY)
- WM220B-2 SHORTER DROP WIDER CENTER BAR (BAR ONLY)
- WM220B-3 STANDARD DROP WIDER CENTER BAR (BAR ONLY)



Weld On Rear Mount Panhard Bar Climber

Weld on mount for your Ford 9" rear end, based on 23" bar with a 4" slot for plenty of adjustment to build traction. Now available in 3 options; single, double, and triple slot with a 2½" spacing between slots. Simple weld on application that comes with climber hardware.

- WM282 WELD ON SINGLE SLOT
- WM282DS WELD ON DOUBLE SLOT
- WM282TS WELD ON TRIPLE SLOT

Asphalt Panhard Bar Mount for Axle Tube

Mount clamps on 3" OD axle tube and mounts the panhard bar at a forward angle. Mount uses climber nut for quick adjustment. The slot is 4" long, available centered with axle tube or lowered 1½" below centerline of tube. Mount comes with climber hardware.

- WM228 ANGLED MOUNTED CLIMBER CENTERED
- WM228L ANGLED MOUNTED CLIMBER LOWERED

Steel Rear Mounted Frame Mount

Clamp on steel climber frame mount for rear panhard bars. Angle slot keeps rear end track lined up. Available for 1½" and 2" tubes. Mount comes with all hardware.

- WM263150 SPORT MOD CLIMBING PANHARD MOUNT 1½"
- WM26320 SPORT MOD CLIMBING PANHARD MOUNT 2"



Steel Arc Frame Mount

Steel arc climbing frame mount available for 1½" and 2" square tube. The slot is 2½" off tube centerline and can be used on either side of the tube by flipping over. Slot is 2" long and mount comes with the back nut and climber gear.

- WM240150 STEEL ARC FRAME MOUNT 1½"
- WM24020 STEEL ARC FRAME MOUNT 2"



3 Hole Panhard Bar Frame Mount

These slick mounts let you change the length of your panhard bar with ease. Change the length 2-9/16" by simply swapping bars out. Fits 2" x 2", or 1 1/2" x 1 1/2" square tube, and are available in steel and aluminum.

- WM62322 3 HOLE 2" X 2" PANHARD BAR FRAME MOUNT ALUMINUM
- WM62322S 3 HOLE 2" X 2" PANHARD BAR FRAME MOUNT STEEL
- WM6231515 3 HOLE 1 1/2" X 1 1/2" PANHARD BAR FRAME MOUNT ALUMINUM
- WM6231515S 3 HOLE 1 1/2" X 1 1/2" PANHARD BAR FRAME MOUNT STEEL



Aluminum Arc Double Slot Inboard Frame Mount

Fits 2"x2" or 1 1/2"x1 1/2" square tube. One slot on centerline of tube and one slot inboard. Mount has 4 1/2" total adjustment. Works with climber on arc to keep car tracking lined up. Climber hardware included.

- WM212 ARC FRAME MOUNT 2"
- WM212150 ARC FRAME MOUNT 1 1/2"



Aluminum Triple Slot Arc Frame Mount

Fits 2"x2" square tube. One slot on center line of tube, one slot inboard and one slot outboard. Slot has 4 1/2" total adjustment. Works with climber on arc to keep car tracking lined up. Climber hardware included.

- WM244 TRIPLE SLOT ARC FRAME MOUNT

Aluminum Arc Double Slot Outboard Frame Mount

Fits 2"x2" square tube. One slot on centerline and one slot LS of tube. Mount has 4 1/2" total adjustment. Works with climber on arc for quick adjustment while keeping the track right. Climber hardware included.

- WM222 ARC FRAME MOUNT



- WM212BN FRAME MOUNT BACK NUT
- WM205CG CLIMBER GEAR
- WM212BK FRAME MOUNT BOLT KIT



Arc Frame Mount Center of Tube

Aluminum and Steel Arc Frame Mounts are available for 1 1/2" and 2" square tube with the slot on the tube centerline. Mount has 2" of adjustment. Comes with back nut and climber gear.



- WM241150 STEEL ARC FRAME MOUNT CLIMBER CENTER OF 1 1/2" X 1 1/2" TUBE
- WM241150A ALUMINUM ARC FRAME MOUNT CLIMBER CENTER OF 1 1/2" X 1 1/2" TUBE
- WM24120 STEEL ARC FRAME MOUNT CLIMBER CENTER OF 2" X 2" TUBE
- WM24120A ALUMINUM ARC FRAME MOUNT CLIMBER CENTER OF 2" X 2" TUBE



Steel Double Slot Frame Mount

Our double slot steel climber frame mount for 1 1/2" or 2" square can be flipped either way on the tube to give you 3 options for J-Bar lengths in one mount. Mount comes with all hardware.

- WM271150 STEEL DOUBLE SLOT FRAME MOUNT 1 1/2"
- WM27120 STEEL DOUBLE SLOT FRAME MOUNT 2"



Bolt On Climber Plate

This climber plate bolts to our WM356 axle tube lead clamps to make a panhard bar mount. This plate can also be mounted with slugs in a chassis. Comes with the climber hardware. WM356 sold separately.

- WM440 CLIMBER PLATE



Don't over loosen when adjusting a climber mount you will damage the gear.

Steel Rear Mounted Double Slot Frame Bar Mount

This double slot rear panhard bar mount has 2 slots and can be flipped on either side of the tube to give you all three length options. This frame mount paired with our WM282TS gives you the maximum amount of adjustment to improve your rear traction.

- WM363150 DOUBLE SLOT STEEL CLIMBER 1 1/2" TUBE
- WM36320 DOUBLE SLOT STEEL CLIMBER 2" TUBE



Ultra Force Rater Machine



Our Jason Sivils inspired Ultra Force load rating machines are built with CNC machined components giving our machines unsurpassed strength and quality. Our machine has the ability to smash a spring/bump stop setup to 4500# and pull a pull bar up to 3000# capacity with electric motor motion. We have now teamed up with AccuForce to debut our new automated touch screen machine using their proven technology. This machine will allow you to run your assemblies automatically and graph the compression and rebound of your spring assemblies, limit chain setups, and pull bars. Our quick adjust wrap around spring removal arm makes easy work of unloading spring packages by not relying on coil spacing, but using our special spring removal cups. We now offer a side unloader attachment which allows you to load springs that are too tall to fit inside the main frame.



WM430

WM430A

WM430A-U

- WM430 MANUAL MACHINE
- WM430-U MANUAL MACHINE WITH SIDE LOADER
- WM430A AUTOMATIC TOUCH SCREEN MACHINE
- WM430A-U AUTOMATIC MACHINE WITH SIDE UNLOADER
- WM430UA SIDE UNLOADER ATTACHMENT KIT
- WM430-13 SPRING REMOVAL ARM
- WM430-14-1 SPRING REMOVAL CUP
- WM430-15 FRONT SPRING RATING HELIX
- WM430COVER ULTRA FORCE MACHINE COVER
- WM430COVER-U COVER FOR UF MACHINE W/ UNLOADER

Bent Suspension Bar Angle Finder

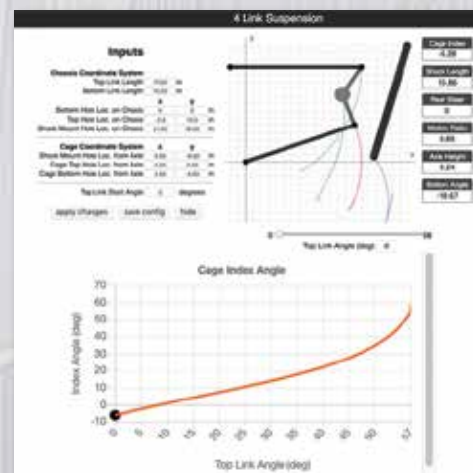
Our telescoping digital angle finder tool is another Wehrs Machine original innovation. This cool tool will allow you to accurately measure the angle of your bent suspension bar. Tool telescopes out to your spacers with a V style centering end so you can get an accurate angle reading. Tool adjusts from 12" to 20".

WM388 BAR ANGLE FINDER



4-Link Suspension Software

Our all-new 4 Link suspension simulation software is an amazing new setup tool for your program. Enter the dimensions of your 4 link system and it will automatically calculate wheelbase change, suspension cage index angle, and shock length throughout the suspension travel. You can make bar length and mounting location adjustments allowing you to simulate your ideas before you change them on the race car. You can also compare and store your standard setup package to your simulated suspension ideas.



TO PURCHASE OR SEE DETAILED VIDEOS OF THE 4-LINK SUSPENSION SOFTWARE GO TO ULTRAFORCETECH.COM

Suspension Load Pull Stick

This load stick bolts in where your shock goes on a shock separate suspension. The stick allows you to change springs with ease and accuracy, along with being able to pull the race car down to dynamic attitude to find your compressed loads and also check for suspension binds. Also available in a ratcheting version.

- WM414-7 LOAD STICK 7"
- WM414-7-R RATCHETING LOAD STICK 7"
- WM414-7-SO STICK ONLY NO LOAD CELL
- WM414-7-R-SO RATCHETING STICK ONLY NO LOAD CELL



Suspension Set Up Sticks

Our suspension set up sticks allow you to set your suspension at ride height or compression height to setup your front suspension with our WM316-5x5 setup plates. Threaded adjustment from 14"-24" for precise setting. These are sold in pairs.

WM394 SET UP STICKS

Billet Fuel Check Dip Stick

Anodized black to see fuel level and marked every inch for fuel level reference. Dipstick is 23" long.

WM408 DIP STICK

Vice Grip Shrink Tool

Our shrink tool is designed for an aggressive shrink on a double fold 90 degree bend. Ratio of the vice grip makes easy work of the double folds.

WM409 SHRINK TOOL



Brake Bleeding Kit

Inspired by Jay Sauter our brake bleeding kit makes brake bleeding easy. Kit utilizes a deep well socket style wrench so your tool will clear the caliper. The kit also has a hose through the socket to transfer the fluid to the plastic bottle. Kits available for 1/4", 7/16" and 10mm.

- WM501-10 10MM BLEEDER
- WM501-250 1/4" BLEEDER
- WM501-4375 7/16" BLEEDER

Suspension Measuring Plate

This is our suspension component measuring plate. Utilizing our heim center finder base design, we have made a sturdy 2-1/2" wide plate that is machined with the length for quick reference. Comes complete with bases.

WM338MP MEASURING PLATE





Dual Suspension Load Stick

Our suspension load stick is now available with dual function displaying load and distance. It has the same control as our manual Ultra Force machines with live load and distance read-out and the ability to zero both. Compressed center to center is 13-1/2" and extended is 19".

WM414D DUAL SUSPENSION LOAD/LENGTH STICK 7"

Rear End Square Tool

Our Dan Long inspired Rear End Tool snaps on axle tube and has notch for edge of tube and axle centerline for easy measuring from rear end.

WM448 REAR END SQUARE TOOL

Spindle Checker

This Travis Roth inspired tool lets you instantly know after you crash if you need to change your spindle. Screws on your 1/2" fine thread upper ball joint and plunger points to center of lower ball joint if the spindle is straight. Also has flat for an angle finder to easily check caster and camber.

WM449 SPINDLE CHECKER
WM449-1 LONG SPINDLE CHECKER 5-1/4" TO 8"



Digital Length Measuring Tool

Our digital length measuring tool is a trick digital tape measure. It has a button to hold the distance for when you are under the car and can't see the screen. Tool goes from 14-3/4" to 24-1/2" extended.

WM416 DIGITAL LENGTH MEASURING TOOL



Bolt Center Finders

Sold in sets. With a tape measure end to hook the tape on, and a pointed end to read the tape. The flat end swivels so you never have to time the hex head. Just slap them on and measure. Available for 1/2", 5/8", and 3/4" bolts.

WM133500 1/2" BOLTS
WM133625 5/8" BOLTS
WM133750 3/4" BOLTS

Heim Center Finder Base

These Heim Center finder bases are sold in a pair. They fit 1/2", 5/8", and 3/4" heims and are raised up for measuring pull bars with ease.

WM338 HEIM CENTER FINDER



Rubber Pick

This slick new tool inspired by Scott and Cyndi Stiffler is used to remove the strips of rubber from your tire after you groove it. Tip is removable for left or right hand use.

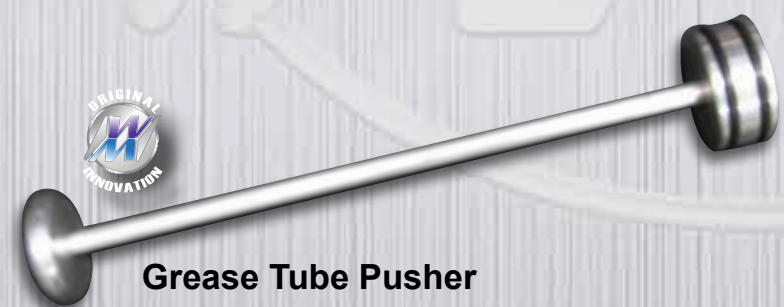
WM422 TIRE PICK



Heim Center Finders

These unique heim center finders are designed to allow the racer to set up spare arms once the car is set up. The self-aligning center finders slip into your heims for easy measuring. Finder sets are available for 1/2", 5/8", and 3/4" heims.

WM28500 1/2" HEIM PAIR
WM28625 5/8" HEIM PAIR
WM28750 3/4" HEIM PAIR



Grease Tube Pusher

Kevin Nuttleman inspired slick and clean way to get the grease out of your tube and into your packer with ease. **WM117 GREASE PUSHER**



Ball Joint Remover

Pickle forks suck! Our remover actually works. With the nut off the ball joint you want to remove, simply place the remover between ball joint tips, apply pressure, tap the spindle, and the ball joint pops out.

WM130-1 BALL JOINT REMOVER 3"-5"
WM130-2 BALL JOINT REMOVER 5"-7"
WM130-3 BALL JOINT REMOVER 7"-9"



Power Valve Tool

No need for the huge 1" wrench when changing your power valve. What more do we need to say, it's a cool tool!

WM129 POWER VALVE TOOL



Steering Arm Puller

Do you ever find yourself with front end carnage and need to make a quick steering repair at the track? This tool pushes the tie rod out of the center link for a quick repair.

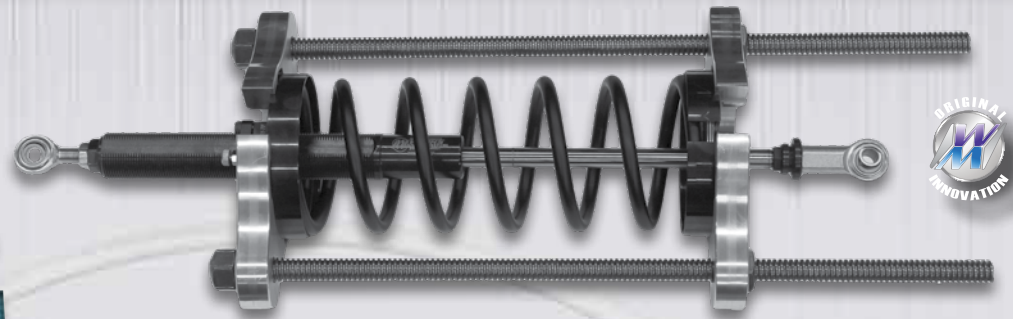
WM329 STEERING ARM PULLER



Ball Joint Wrench

Our ball joint wrench is a cool tool! One end of this amazing tool fits the upper screw in ball joint and the other end fits the lower screw in ball joint. It's an all in one tool for your front suspension.

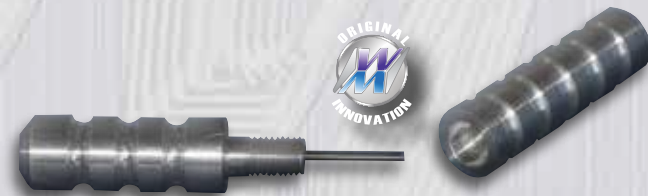
WM260 BALL JOINT WRENCH



Spring Compressor

Safely compress your tall 3" and 5" springs so that you can install the spring without moving the coil over adjustment nut. The floating plate has a slot that captures the nut so you don't need a wrench. Simply use an impact on the other end of the compressor to compress the spring and install your shock. Compressor also has a slot in each plate for on the car compressing to make quick suspension adjustments and to clamp on a coil over slider in a spring smasher to take to the car for installation. Slider and Spring not included.

WM180 SPRING COMPRESSOR



Penske Sweep Tool

This tool is for adjusting the sweeps on your shock shaft. Screw on cover design so that you can put it in your pocket without poking your rocket.

WM191 SWEEP TOOL



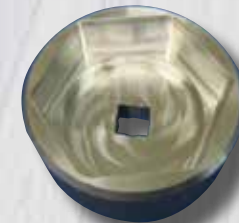
Ultimate Mud Scraper

Machined from 1/2" high strength plastic so it will not brake like those cheap ice scrapers. Super long reach handle and we machined the chisel angle on the end.

WM266SB MUD SCRAPER

Small Body Mud Scraper

WM266SBS SMALL BODY MUD SCRAPER SHORT HANDLE



Spindle Nut Socket

2 3/8" Hex 1/2" drive spindle nut socket. **WM172**

SPINDLE NUT SOCKET



Universal Axle Puller

Our Troy Brand inspired T-handle style axle puller removes your axle with ease acting as a slide hammer for tight or bent axles. Fits standard axles with 3/8" fine or coarse thread, or gundrilled axles.

WM22B UNIVERSAL AXLE PULLER BLACK



Grand National Hub Socket

Billet grand national hub socket with 1/2" drive.

WM265 GRAND NATIONAL SOCKET



Spanner Wrench

Used on the adjusting nuts for the Ford 9" gear setup.

WM3 SPANNER WRENCH



Wheel Well Compass

Our Joey Ciechanowski inspired wheel well compass is a cool tool. Simply remove your axle cap and mount the compass shaft. Set the marker to the desired radius you want and mark your body with a clean line.

WM295 WHEEL WELL COMPASS



Interior Tin Tube Notcher

Notch your tin quick and easy with this cool tool. Available for 1", 1¼", 1½" and 1¾" tube.

- WM238100 1" NOTCHER
- WM2381250 1¼" NOTCHER
- WM238150 1½" NOTCHER
- WM2381750 1¾" NOTCHER



Engine & Rear End Lift Handles

Our redesigned machined aluminum sure-grip engine lift handles now double as rear end lift handles as well. This multi tool allows you to simply screw one end into the engine, or flip it over and screw the other end into the studs on your hub. A great two in one tool. Sold in sets of four.

WM50 LIFT HANDLES

Fuel Barrel Socket

After 23 years of using a channel lock to open our barrels of fuel we finally made a trick billet socket! The socket uses a 1" wrench and is a cool tool.

WM233 FUEL BARREL SOCKET



Set-Up Plate

The ultimate setup plate for tow and bump steer. Plate is 12" x 23½" and is ¾" thick machined billet aluminum. This plate will allow you to get the proper bump travel when setting bump steer and will not flex like the ½" thick plates. These plates also work great for checking your rear end at the track to see if it is bent. We make them to fit the Wide 5 and 5 x 5" bolt patterns. Now comes with tow slots and offset hub mounts for setting tow on stands.

- WM316-5X5 SETUP PLATE FOR 5 X 5" PATTERN
- WM316-W5 SETUP PLATE FOR WIDE 5 PATTERN



Coil Over Tool

This tool is used to adjust your coil over nut. It has a long replaceable rod for an easier fit.

WM192 COIL OVER TOOL



Gear Lube Pump

Our gear changer is one sweet piece. When you need to change gears this is your drain pan for the lube, as well as a pump to re-install the lube in your rear end. Tote is molded plastic with a slosh proof lid. You can use a drill (not included) or crank it by hand. Hex and hand crank included.

WM190 GEAR LUBE PUMP



Rear End Drain Pan

Our rear end drain pan is really trick. It's wider to catch all of your fluid, has spots for each gear to drain, a slot to stand the rear cover up to drain, and holes for your rear cover nuts. It even has a place for your wrench and a slick pour spout with a shut off valve.

WM330 REAR END DRAIN PAN

Ford 9" Gear Handle

Changing and carrying your 9" gear has never been so easy. Handle bolts to pinion cover giving you the leverage and control you've always wanted.

WM127 GEAR HANDLE



Heavy Duty -20 AN Wrench

Our buddy Jason Feger kept breaking his lightweight aluminum -20AN wrench so we stepped it up a notch with this heavy duty wrench.

WM277 HEAVY DUTY -20 AN WRENCH



AN Combo Wrench

Our AN Combo Wrench is a Cool Tool. We machined -8 -10 -12 and -16 into one wrench to speed up your bolt checks and reduce the under the hood tool clutter with a smaller pile of wrenches.

WM278 AN COMBO WRENCH



Thin Steel 12 Point LINE Wrenches

These thin AN 12 point wrenches will help you get into those tight areas with ease. Available in -8,-10,-12,-16 AN sizes

- WM1698 -8AN 12 POINT WRENCH**
- WM16910 -10AN 12 POINT WRENCH**
- WM16912 -12AN 12 POINT WRENCH**
- WM16916 -16AN 12 POINT WRENCH**
- WM169-SET SET OF ALL 4 WRENCHES**



Panhard Bar Climber Adjuster Wrench

A Team Deuce Nickel inspired cool tool for adjusting your panhard bar when the standard 1 1/2" wrench won't fit between the bar and mount. This tool allows for quick adjustments because you don't have to loosen the bolt so much to get the thick wrench in to adjust. Adjuster wrench is not meant to tighten or loosen the bolt.

WM274 1 1/2" CLIMBER ADJUSTER WRENCH



Fox Shock Wrench

This wrench is the answer to making easy work out of rebuilding your Fox shocks. It has a pistol grip for comfort, making slick work of it.

WM321 FOX SHOCK WRENCH



Power Steering Pump Bracket for Head

Mounts Sweet style pumps to SB Chevy cylinder heads. Comes with hardware.

WM87 POWER STEERING PUMP BRACKET

Power Steering Pump Bracket for Block

Mounts Sweet style pumps to SB Chevy Block. Comes with hardware.

WM88 POWER STEERING PUMP BRACKET



Bellhousing Dowel

1 1/2" long gun drilled dowels. Sold in sets of two.

WM51S Steel Dowels

Remote Breather Tank

100% CNC machined breather tank with no welds. This tank will work for rear end or engine breather tank. Comes with chassis mount bracket. It screws apart in the middle for easy cleaning. Please specify what line size you want [-8,-10,-12,or-16AN] and what size chassis tube you would like this to clamp to [1", 1 1/4", 1 1/2", 1 5/8", 1 3/4", or 2"] round tubes all available. Now available with dual ports so you can breathe engine and rear end together.

- WM217 REMOTE BREATHER TANK**
- WM217DP DUAL PORT BREATHER TANK**



Engine Mount Spacers

Lightweight engine spacers with 1/2" ID and 1 1/2" OD. Sold in pairs.

- WM261250 ENGINE SPACER 1/4" THICK**
- WM261500 ENGINE SPACER 1/2" THICK**
- WM261750 ENGINE SPACER 3/4" THICK**
- WM261100 ENGINE SPACER 1" THICK**





GM EGR Intake Blockoff

GM Quadrajet intake blockoff plate for triangle port on EGR intakes.

WM229 TRIANGLE BLOCKOFF

GM EGR Intake Blockoff

GM Quadrajet intake blockoff plate for small rectangle port on EGR intakes.

WM232 RECTANGLE BLOCKOFF

Pump Plates & Blockoffs

Fits small block Chevrolet.

WM4 FUEL PUMP PLATE
WM4B FUEL PUMP BLOCKOFF



Splash Guards

This splash guard is a step up from the normal flat piece of tin. Our radius slots direct the oil from the pushrod down into the rocker balls and valve springs where it belongs. Complete with mounting hardware. Available for 3/8" or 7/16" studs.

WM42375 SPLASH GUARD WITH 3/8" STUDS SET OF TWO
WM424375 SPLASH GUARD WITH 7/16" STUDS SET OF TWO

Weld in Oil Fill Bung and Cap

Aluminum weld bung for valve cover. Plastic Stant cap with O-ring seal.

WM255 WELD IN OIL BUNG HOLE AND CAP

Throttle Spring Mount

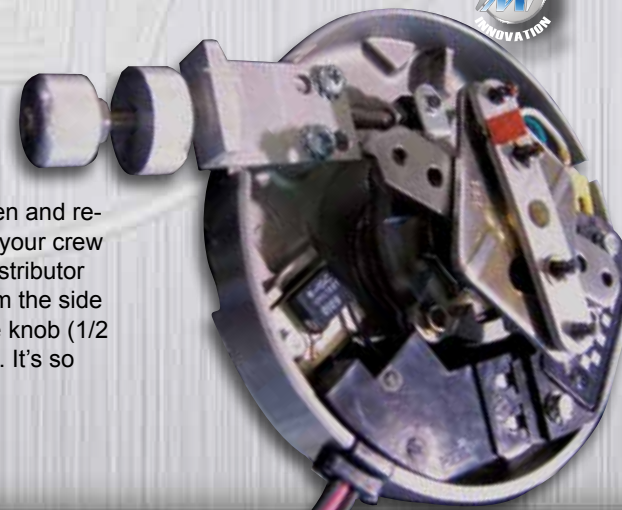
This Jimmy Mars designed throttle return spring mount bolts to your cylinder head and mounts your throttle return spring.

WM528 THROTTLE RETURN SPRING MOUNT

Instant Timing Knob

This instant timing knob allows you to change your timing without having to loosen and re-tighten the distributor hold-down clamp. It is great for quick pit stop tuning. Plus, your crew chief will be able to avoid those nasty hand burns that happen while rotating a distributor on a hot racing engine. How does it work? The instant timing knob protrudes from the side of the distributor. When you need to advance or retard the timing, simply turn the knob (1/2 revolution equals 1 degree of timing, a full revolution equals 2 degrees of timing). It's so accurate that no timing light is needed to verify it!

WM46 INSTANT TIMING KNOB



Radiator Restrictors

The restrictor goes in the lower radiator hose replacing the thermostat restrictor to keep the water in the radiator longer. Therefore, the water is cooler when it reaches the engine. This restrictor must be tack welded to the radiator or have two hose clamps installed to insure it doesn't move.

WM9 RADIATOR RESTRICTOR

Intake Divider

Designed to help the flow of your cooling system. The divider protrudes into the intake to separate water flow from side to side, so there is less interference and back pressure. Works well with our WM9 restrictors. Will fit cast iron or aluminum intakes.

WM74 INTAKE DIVIDER



Restrictor & Divider Combo

WM749



Thermostat Riser with Ports

Use to run the remote lines to the rear of the intake to prevent vapor pockets. The riser thickness is 1" and comes with either 1/4" or 3/8" NPT threads. Also, now available with extra 1/8" NPT port for pressure sensor.

WM39250 1/4" NPT THREAD
WM39375 3/8" NPT THREAD
WM39250125 1/4" NPT WITH 1/8" NPT
WM39375125 3/8" NPT WITH 1/8" NPT

Log Style Manifold Spark Plug Wire Keepers

Attaching to the valve cover, these keepers hold the plug wires away from the exhaust manifold so they don't melt.

WM188 (SET OF FOUR)



Crank Trigger Guard

Tired of running the risk of knocking the crank trigger off of your power plant? Kevin Weaver has helped us find a trick answer to put your worries to rest. This trick piece screws onto your crank trigger mount, encasing the wiring and protecting it from the race track and debris.

WM328 CRANK TRIGGER GUARD



Plug Wire Keepers

Keep your plug wires routed neatly, close to your engine block and away from those harmful headers that will melt them.

WM15 (SET OF TWO)



Two Into Four Carb Adapter



These adapt a 4412 Holley 2BRL to a 4BRL Holley pattern intake toward the front of the intake. Flared and swirled for Superior HP.

- WM10-100SB STRAIGHT BORE 1" TALL
- WM10-100 1" TALL



1" Tall Four Barrel Spacer

Spacer fits 750 carb and is 1" tall, flared and swirled on the bottom for good mixing or straight bore.

- WM10750 CARB SPACER
- WM10750SB STRAIGHT BORE SPACER

Carb Feet

Carb feet bolt to the base of your carb so you can work on the carb without the throttle assembly in the way.

- WM47 (SET OF 4) CARB FEET



GM 604 Crate Spacer

Want to get more bottom end out of your crate motor? Here is the answer to that problem. Our 604 Crate Spacer is 1/4" tall and is flared into the intake, which gives you more bottom end power off the corners. Not IMCA legal.

- WM10604 GM 604 CRATE SPACER



1/2" Tall Four Barrel Spacer

Built shorter to move the Carb closer to the intake to make low end power.

- WM10750500 1/2" TALL FOUR BARREL SPACER



One Piece Carb Restrictor Spacer

Running an open motor and want to tame it down in slick conditions to compete with the crate motor? Our one piece restricted carb spacer does just that. This is the IMCA legal one piece option available in 1" or 2" tall.



- WM10100R CARB RESTRICTOR 1" I.D. X 1.0" TALL SPACER
- WM101125R CARB RESTRICTOR 1 1/8" I.D. X 1.0" TALL SPACER
- WM101250R CARB RESTRICTOR 1 1/4" I.D. X 1.0" TALL SPACER
- WM250-1.0 CARB RESTRICTOR 1" I.D. X 2.0" TALL SPACER
- WM250-1.125 CARB RESTRICTOR 1 1/8" I.D. X 2.0" TALL SPACER
- WM250-1.250 CARB RESTRICTOR 1 1/4" I.D. X 2.0" TALL SPACER



Traction Tuning Carb Spacer System

Our Jimmy Mars designed traction tuning carb spacer system allows you to have maximum power. This design option reduces power by changing the insert when the track gets slick. Available in a 1" or 2" tall version. Reducers are available in 1/4" with 4% reduction, 1/8" with 7% reduction and 1" with 14% reduction in power.



- WM302B SPACER SYSTEM MAIN BODY 2" TALL
- WM302-0 OPEN INSERT
- WM302-1.0 BORE REDUCTION INSERT 1" DIAMETER
- WM302-1.125 BORE REDUCTION INSERT 1 1/8" DIAMETER
- WM302-1.200 BORE REDUCTION INSERT 1.200" DIAMETER
- WM302-1.250 BORE REDUCTION INSERT 1 1/4" DIAMETER
- WM302-1.300 BORE REDUCTION INSERT 1.300" DIAMETER
- WM302-1.350 BORE REDUCTION INSERT 1.350" DIAMETER
- WM302-1.400 BORE REDUCTION INSERT 1.400" DIAMETER
- WM302-1.450 BORE REDUCTION INSERT 1.450" DIAMETER
- WM301B SPACER SYSTEM MAIN BODY 1" TALL
- WM301-0 OPEN INSERT
- WM301-1.0 BORE REDUCTION INSERT 1" DIAMETER
- WM301-1.125 BORE REDUCTION INSERT 1 1/8" DIAMETER
- WM301-1.250 BORE REDUCTION INSERT 1 1/4" DIAMETER
- WM301-1.450 BORE REDUCTION INSERT 1.450" DIAMETER

Air Cleaner Nut

Forget your wrench on the way to tech? No worries with one of our super light nuts, no wrench required. Easy to turn grip radius design with O-ring seal.

- WM27250 1/4" NUT 5/16"
- WM273125 NUT





WM10Q500

Q-Jet Adapter

These adapt a 4412 Holley 2BRL to GM Q-Jet intake over the two rear holes. Tapered from carb diameter to intake diameter for superior HP. Also available in a straight bore for street stocks. Adapters are 1" Tall.

- WM10Q350 350-2BRL
- WM10Q500 500-2BRL
- WM10Q500SB

WM102BRL500



Two Barrel Adapter

Adapts a 4412 Holley Carb to a GM Rochester 2BRL intake. Adapters are 1" tall.

- WM102BRL350 2BRL CARB SPACER 2BRL
- WM102BRL500 CARB SPACER



WM206100R1250



WM206SB



WM206100



WM206OVALSB

Carb Slider

Carb adapter fits a 2BRL 500cfm Holley to a 4BRL Holley pattern intake. Adapters available in straight bore, flared, oval, and also as a restrictor. Sliders are slotted to allow for the perfect placement of your carb.

- WM206100 FLARED CARB SLIDER 1" TALL
- WM206SB625 STRAIGHT BORE 5/8" TALL
- WM206SB CARB SLIDER STRAIGHT BORE 1" TALL
- WM206OVALSB STRAIGHT OVAL BORE 1" TALL
- WM206100R1125 CARB SLIDER RESTRICTOR 1 1/8" BORE
- WM206100R1250 CARB SLIDER RESTRICTOR 1 1/4" BORE

Aluminum Carb Bushings

These fit a 1/4" heim to your carburetor's 1/2" hole. Sold as pair.

- WM122 CARB BUSHINGS



Carb Fitting

Fitting for Holley carbs when you use a 3/8" rubber line.

- WM157 CARB FITTING



Shifter Knob and Handles

Superlight knob comes with 3/8" threads. The setback handle (WM79) has a 4" setback and is 7 1/2" tall. The straight handle (WM179) is 5 1/2" tall. Sold as individual parts or as a combo, to save you some greenbacks.

- WM29 SHIFT KNOB
- WM79 SETBACK HANDLE
- WM179 STRAIGHT HANDLE
- WM2979 KNOB & SETBACK HANDLE
- WM29179 KNOB & STRAIGHT HANDLE



Shifter Setback Mount

Can't reach the Shifter? This should help. Mount is setback the standard 4" and is also drilled for a 6" setback. Also, Fits T-10 Trannies.

- WM146 SHIFTER MOUNT



Pistol Grip Shift Handles

Our pistol grip style shift handles give you an excellent grip for easy shifting. You don't have to worry about your shifter ball falling off! Available in 9" long straight and 4" setback 13" long.

- WM246 PISTOL GRIP SHIFT HANDLE STRAIGHT
- WM247 PISTOL GRIP SHIFT HANDLE SETBACK

Tranny Caddy

Store or transport your spare transmission when not in use. Fits GM bolt pattern transmissions.

- WM6 TRANNY CADDY



Tranny Plug

Sick and tired of rags around your tailshaft? Here is your answer! The plugs go into the transmission during removal and storage; keeping the lubricants in and dirt particles out. Plugs fit a variety of trannies. The small one is 1.180 I.D. and 1.500 O.D. and the large one is 1.375 I.D. and 1.890 O.D. Machined aluminum for a lifetime of use. Our tranny plugs now come with a set screw, so you have the ability to turn the shaft of the transmission while installing the engine.

- WM26S **SMALL PLUG**
- WM26B **BIG PLUG**



Suspension Tube Jam Nut

Our Joe Docekal inspired jam nut moves the hex outside the plates on the suspension cage and chassis plates so you can easily get a wrench on to adjust length. Available in RH and LH 5/8" thread. Jam Nut works on suspension tubes 1" OD or smaller.

- WM450L **SUSPENSION TUBE JAM NUT 5/8" LH**
- WM450R **SUSPENSION TUBE JAM NUT 5/8" RH**
- WM491125W **STUBBY 1 1/4" WRENCH**

Ricochet Shock Guard

We have teamed up with Ricochet Shock Guards to make one trick piece. The guard now bolts to our billet aluminum base for unmatched strength and easy replacement. The base is still jammed between the shaft heim and jam nut on shock. These guards work with 7"-9" shocks and are IMCA approved for Modifieds and Northern Sport Mods.

Ricochet Patent # 9,657,801

- RRC1300B-500 **RICOCHE SHOCK GUARD 1/2" HOLE**
- RRC1300B-625 **RICOCHE SHOCK GUARD 5/8" HOLE**
- RRC1301-500 **BASE FOR SHOCK GUARD 1/2" HOLE**
- RRC1301-625 **BASE FOR RICOCHE 5/8" HOLE**
- RRC1302 **REPLACEMENT GUARD FOR RICOCHE**



Transmission and Rear End Breather Fitting

Adapts 1/2" ID Breather to -4AN line. Sold with or without breather.

- WM128 **W/O BREATHER**
- WM128B **W/BREATHER**



Two Lever Shifter

Shifter comes complete with 20" tubes and heims. Available in two lever with or without lock and also a single lever.

- WM84 **W/O LOCK**
- WM84L **LOCKING**
- WM84S **SINGLE LEVER**

Shifter Arms

Shifter arms come with a 3/8" thread to eliminate the need for a nut.

- WM8 **SHIFTER ARM**



RACEceiver Mounts

Our new trick RACEceiver mounts allow you to securely mount your RACEceiver wherever you want in your racecar. Available in tube mount or flat mount for both the Fusion and Element RACEceivers.

- WM429E **ELEMENT RACECEIVER 1 3/4" TUBE MOUNT**
- WM429E625 **ELEMENT RACECEIVER 5/8" TUBE MOUNT**
- WM429E875 **ELEMENT RACECEIVER 7/8" TUBE MOUNT**
- WM429EF **ELEMENT RACECEIVER FLAT MOUNT**
- WM429F **FUSION RACECEIVER 1 3/4" TUBE MOUNT**
- WM429F625 **FUSION RACECEIVER 5/8" TUBE MOUNT**
- WM429F875 **FUSION RACECEIVER 7/8" TUBE MOUNT**
- WM429FF **FUSION RACECEIVER FLAT MOUNT**
- WM429F750 **FUSION RACECEIVER MOUNT 3/4" TUBE**
- WM429RE **RE SWITCH MOUNT FOR 1 3/4" TUBE**
- WM429REF **RE SWITCH FLAT MOUNT**



Quick Change Speed Locks

No more safety wire! Change gears in a Flash! Kit comes with two cover nuts, two locks, and two clips.

- WM170AK **QC ALUMINUM KIT**



No-Cuts

Avoid those nasty knuckle cuts with these soft reusable vinyl covers for the end of your hose clamps.

- WM126 **NO CUTS (PACK OF 10)**





Bump Stop Fine Tuner

Travis Sauter designed bump stop height adjuster. Adjust your bump stops to the thousandths of an inch! Fine tuners available to fit shock shaft diameters of 1/2", 14mm, and 5/8".

- WM455-14MM BUMP STOP FINE TUNER SLEEVE 14MM ID
- WM455-500 BUMP STOP FINE TUNER SLEEVE 1/2" ID
- WM455-625 BUMP STOP FINE TUNER SLEEVE 5/8" ID



Carbon Fiber Bump Packers

Our new Butch Vandoorn inspired carbon fiber packers will outlast the metal packers on the market. Available in 1/32", and 1/16".

- WM456-625-032 CARBON PACKER 1/32"
- WM456-625-062 CARBON PACKER 1/16"



Reservoir Mounts

We have brought back our shock reservoir mounts. Reservoir clamp comes with quick knob and accessory clamp. Our mount swivels 360 degrees for easy positioning.

- WM138100 PENSKE AND INTEGRA RES MOUNT 1" BAR
- WM1381250 PENSKE AND INTEGRA RES MOUNT 1 1/4" BAR
- WM1381500 PENSKE AND INTEGRA RES MOUNT 1 1/2" BAR
- WM1381625 PENSKE AND INTEGRA RES MOUNT 1-5/8" BAR
- WM1381750 PENSKE AND INTEGRA RES MOUNT 1 3/4" BAR
- WM138200 PENSKE AND INTEGRA RES MOUNT 2" BAR
- WM141100 JRI & OHLINS RES MOUNT 1" BAR
- WM1411250 JRI & OHLINS RES MOUNT 1-1/4" BAR
- WM1411500 JRI & OHLINS RES MOUNT 1-1/2" BAR
- WM1411625 JRI & OHLINS RES MOUNT 1-5/8" BAR
- WM1411750 JRI & OHLINS RES MOUNT 1-3/4" BAR
- WM141200 JRI & OHLINS RES MOUNT 2" BAR



Tank/Bottle Mount

No more hose clamps! Here is a lightweight aluminum clamp to secure your tank or bottle. Available for 3", 3 1/4", 3 1/2", 4", 4 1/4", 4 3/8" and 5 1/4" diameters. Available with 1", 1 1/4", 1 3/8", 1 1/2", 1 5/8", 1 3/4", and 2" accessory clamps for roll cage. Sold in pairs.

FLAT MOUNT

- WM140300 3" DIAMETER MOUNT
- WM1403250 3 1/4" DIAMETER MOUNT
- WM1403500 3 1/2" DIAMETER MOUNT
- WM140400 4" DIAMETER MOUNT
- WM1404250 4 1/4" DIAMETER FLAT MOUNT
- WM1404375 4 3/8" DIAMETER MOUNT
- WM1405250 5 1/4" DIAMETER MOUNT

TUBE MOUNT

- WM140300T (TUBE SIZE) 3" DIAMETER
- WM1403250T (TUBE SIZE) 3 1/4" DIAMETER
- WM1403500T (TUBE SIZE) 3 1/2" DIAMETER
- WM140400T (TUBE SIZE) 4" DIAMETER
- WM1404250T (TUBE SIZE) 4 1/4" DIAMETER
- WM1404375T (TUBE SIZE) 4 3/8" DIAMETER
- WM1405250T (TUBE SIZE) 5 1/4" DIAMETER



Female Steel Clevis

Steel female clevis in 1/2"-13 course RH thread. Slot is 3/8" and the through hole is 3/8". Use on the sixth coil chain or limit chains on a threaded rod or any other application you can dream up.

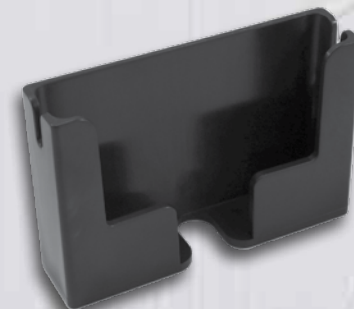
- WM257C STEEL CLEVIS FEMALE



Male Steel Clevis

Male clevis with 1/2"-20 left hand thread with 3/8" slot and bolt hole.

- WM214C STEEL MALE CLEVIS



Cell Phone Holder

Our wall mounted cell phone charging station is a trick addition to your office, race trailer or night stand. Holder has TWO built in notches for cord when not charging so you don't have to reach down to find your cord when it falls behind the bed. Comes with adhesive strip to mount to wall. Fits any cellular phone that is less than 3-1/2" wide. MADE in USA!

- WM447 CELL PHONE HOLDER



Lug Nut Plates

Billet Aluminum lug nut plates that you can rivet to your body or pit cart to keep your nuts where you can find them. Sold as a set of 4 for 5/8" coarse lug nuts.

- WM20 LUG NUT PLATES



Bulkhead Fitting -4AN to 1/8" NPT

Fitting with -4 AN male bulk head style & 1/8" NPT female on opposite end.

- WM298 BULKHEAD FITTING -4AN TO 1/8" NPT

Billet Quick Change Nuts

Billet one piece quick change nuts pre-drilled for our quick lock kit or safety wire. Sold individually.

- WM170N QC NUT



Weld-in Shock Mount Tube

Weld in shock mount tube that contains the hex head so you only need one wrench when changing shocks.

- WM184 SINGLE WRENCH SHOCK TUBE



Weld-on Hex for Existing 1/2" Tubes

Add this hex piece to your existing cars shock mount by welding it on.

- WM185 WELD ON HEX



Breather for -6 and -8AN

Small breather for your fuel cell or rear end. No need for line, attaches right to the cell and has built in anti-slosh.

- WM253-6 FUEL CELL BREATHER FOR -6AN
- WM253-8 FUEL CELL BREATHER FOR -8AN
- UP-103 1/2" ID FILTER FOR WM253



Wheel Cover Conversion Nut and Bolt Kits

Wheel cover conversion nut & bolt kit to convert DZUS to 1/4"-20 or 5/16"-18 thread. Everything included in this picture for one kit. Sold individually.

- WM377A ALUMINUM KIT 1/4"-20 THREAD
- WM377A-312 ALUMINUM KIT 5/16"-18 THREAD
- WM377S STEEL KIT 1/4"-20 THREAD
- WM377S-312 STEEL KIT 5/16"-18 THREAD



Stainless Steel Bolt For Wheel Covers

Stainless steel bolt for wheel covers. Comes with plastic washer to keep bolt with cover. Bolts come in 1/4"-20 or 5/16"-18 thread and are 3/4" long 7/16" Hex Head! SOLD IN SINGLES!

- WM377250B 1/4" STAINLESS BOLT
- WM377312B 5/16" STAINLESS BOLT



Shock Seal Saver

This is a Ryan Rosenow inspired aluminum washer to eliminate seal damage when you bottom out a shock. It has a counterbore to fit over the jam nut on the rod end side of the shock.

- WM365 SHOCK SEAL SAVER



Stock Front Spring Retainer

Another Fred Ryland inspired part to keep your open coil front spring in the proper location when the tension is released through travel.

- WM361 STOCK FRONT SPRING RETAINER



Inline Fuel Filter and Safety Valve Clamps

Our new single bolt design inline fuel filter and Oberg inline safety valve mounts fasten to 1 1/4", 1 1/2" and 1 3/4" round tubes. Fuel filter not included.

- WM3461250 OBERG 1.350" OD VALVE MOUNT FOR 1 1/4" TUBE
- WM3461500 OBERG 1.350" OD VALVE MOUNT FOR 1 1/2" TUBE
- WM3461750 OBERG 1.350" OD VALVE MOUNT FOR 1 3/4" TUBE
- WM3471250 INLINE 2" OD FILTER MOUNT FOR 1 1/4" TUBE
- WM3471500 INLINE 2" OD FILTER MOUNT FOR 1 1/2" TUBE
- WM3471750 INLINE 2" OD FILTER MOUNT FOR 1 3/4" TUBE



Slide-In Rack Spacers

Bump troubles? These will help. Slide in rack spacers to help with bump steer adjustment. No more fumbling washers around.

- WM150125 1/8" SPACER
- WM150250 1/4" SPACER
- WM150375 3/8" SPACER
- WM150500 1/2" SPACER



Helmet/Hans Hook

Hooks are available in steel or blue or purple aluminum so they can be welded or clamped to your cage.

- WM17B BLUE HELMET/HANS HOOK
- WM17P PURPLE HELMET/HANS HOOK
- WM17ST STEEL HELMET/HANS HOOK

Clamp On Tow Hook

Not really what you want to plan for but if it happens you will be ready. These hooks will give the wrecker operator an easy spot to hook up to your ride without damaging anything else. Available for 1 1/2" and 1 3/4" tubes.

- WM207125 1 1/4"
- WM207150 1 1/2"
- WM207175 1 3/4"



Grand National Hub Dust Cap

Billet dust caps are a 1/4" thick for superior strength. Manufactured with a square O-ring so it stays put during installation

- WM248 HUB DUST CAP



9" Ford Pumpkin Cover

For use when the gear is out of the rear end to keep it clean.

- WM12 Ford 9" Pumpkin Cover

Wide 5 Dust Covers

Aluminum Covers back relieved for the spindle snout. We make 3 designs to fit the 8-hole, 5 hole, and snap-in style front hubs.

- WM21 8 HOLE
- WM21S55 STARLITE 5 HOLE
- WM166 SNAP-IN W5 COVER
- CUSTOM ENGRAVED SET



Dust Cover Bolts

7/16" x 3/4" Aluminum bolts to use with your lightweight dust covers.

- WM21B



Adjustable Throttle Pedal Stop

Stop mounts to the outside of the firewall for easy installation and adjustment. It has 3/4" fine threads and is 4" long.

- WM254 ADJUSTABLE THROTTLE PEDAL STOP

Adjustable Throttle Pedal

Our newly re-designed non-slip aluminum pedals will supply comfort to any lead foot. The foot pedal and upright slide on a splined shaft for fine tuning. When adjusted and tightened they will not slip. The Delrin toe rollers and bronze bushing design allow for silky smooth acceleration. Our pedals are available for straight or angled firewalls.

- WM110 STRAIGHT MOUNT PEDAL
- WM111 18 DEGREE ANGLED MOUNT PEDAL



Universal Steering Mounts

Driver comfort with ease in any car. The hinge design allows for maximum adjustability. No more Heim binding. With the many dash bar heights and cockpit lengths, it's hard to please everyone - but we think this should do it! Standard non-collapsible mounts also have built-in steering alignment so when you set your toe or put the wheel on to go, you know the wheels are straight. Available in three lengths: 6¾", 9½", 16" and 1½", or 1¾" dash bars. Part numbers with a C are for the 1½" tube style collapsible columns and the part numbers with C750 on the end are for the collapsible style with the ¾"-16 thread heim style.

- WM23634112 6¾" LONG 1½" BAR STANDARD ¾" SHAFT STYLE
- WM23634112C750 6¾" LONG 1½" BAR ¾"-16 HEIM STYLE COLLAPSIBLE
- WM23634175 6¾" LONG 1¾" BAR STANDARD ¾" SHAFT STYLE
- WM23634175C750 6¾" LONG 1¾" BAR ¾"-16 HEIM STYLE COLLAPSIBLE
- WM23912112 9½" LONG 1½" BAR STANDARD ¾" SHAFT STYLE
- WM23912112C750 9½" LONG 1½" BAR ¾"-16 HEIM STYLE COLLAPSIBLE
- WM23912175 9½" LONG 1¾" BAR STANDARD ¾" SHAFT STYLE
- WM23912175C750 9½" LONG 1¾" BAR ¾"-16 HEIM STYLE COLLAPSIBLE
- WM2316175 16" LONG 1¾" BAR STANDARD ¾" SHAFT STYLE



C750



Steering Shaft Supports

Designed by chassis builder Justin O'Brien. These new innovative brackets replace a weld on tab in your car's engine bay to mount the steering shaft which guarantees virtually any header brand/model will fit your hotrod. They accept the standard ¾" steering heim and are available for 1", 1¼", 1½" and 1¾" tube sizes. Heim not included.

- WM26210 STEERING SHAFT SUPPORT BRACKET 1"
- WM2621250 STEERING SHAFT SUPPORT BRACKET 1¼"
- WM262150 STEERING SHAFT SUPPORT BRACKET 1½"
- WM2621750 STEERING SHAFT SUPPORT BRACKET 1¾"



Firewall Flange Bearing

Lightweight aluminum housing with the same bearing as our steering column mount. 757ID. Will not melt like plastic ones.

- WM102 FIREWALL FLANGE BEARING



Rear Spoiler Tech Slot Insert

Our Ken Lemberger inspired rear spoiler tech slot insert replaces the duct tape when you roll through the template zone. Simply slide out to place template on and slide back in when you pass tech. Available in 5" or 6½" tall.

- WM389-5.0 5" TALL
- WM389-6.5 6½" TALL



Body Bolt Fender Washer

Aluminum fender washers for standard ¼" body bolts with 7/16" head. Comes with bolt.

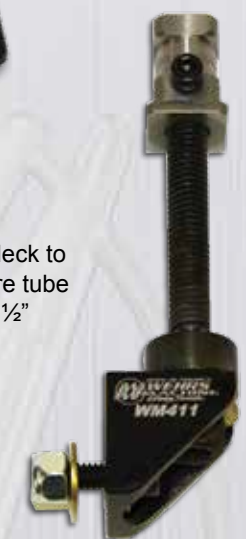
- WM412 FENDER WASHER



T-Bar Adjusters

Our rear T-Bar adjusters make it easy to adjust the rear deck to your desired height. Adjusters fit ¾" or 1" 16ga wall square tube secured with a side bolt or can be welded into the tube. 3/2" adjustment range.

- WM411 T-BAR ADJUSTER
- WM411-1 T-BAR ADJUSTER 1" TUBE



Body Braces

Available in 6", 8", 10", 12", 14" and 16" lengths. Hex adjuster with machined ends.

- WM57-6M 6" BODY BRACE (EACH)
- WM57-8M 8" BODY BRACE (EACH)
- WM57-10M 10" BODY BRACE (EACH)
- WM57-12M 12" BODY BRACE (EACH)
- WM57-14M 14" BODY BRACE (EACH)
- WM57-16M 16" BODY BRACE (EACH)



Modified Front Valance Supports

These Jon Snyder influenced front valance supports will help keep your valance from folding under so easy. Supports have 2 slots for attaching bracing to your frame. Sold separate or with our WM163A valance washers and bolts in a kit form. Now available in spring steel and 3/16" aluminum for added strength.

- WM362 VALANCE SUPPORT 1/8" ALUMINUM
- WM362SS VALANCE SUPPORT SPRING STEEL
- WM362-187 VALANCE SUPPORT 3/16" THICK ALUMINUM
- WM362K 1/8" VALANCE SUPPORT KIT WITH HARDWARE
- WM362BK BOLT KIT FOR VALANCE SUPPORT





Big Diameter Fender Washers

Same design as our standard fender washer with a big diameter for additional support on plastics. Drilled and countersunk to fit 1/4" flat head with a 1 1/2" outside diameter.

- WM280D BIG DELRIN FENDER WASHER
- WM280A BIG ALUMINUM FENDER WASHER

Fender Washer Bolt Kit

This is the Nick Roberts twist to the hex head style fender washer bolt kit. The cool part is it's a 3/8" hex head bolt which means it's just that much lighter than the 7/16" ones with the steel washer on them.

- WM323 FENDER WASHER BOLT KIT

Threaded Weld Tabs

These weld on tabs make mounting body bracing a breeze. While being lighter and cleaner looking than a gusset with a nut, these tabs have a threaded 1/4" hole in them allowing for hassle free mounting.

- WM322 THREADED WELD TABS

Body Bolt Panel Insert

Our steel body bolt panel inserts are designed for a 3/8" hole with an internal 1/4"-20 thread for your body bolts. We used a 3/8"-24 fine thread on ours to increase the strength. Sold individually.

- WM426 BODY BOLT INSERT
- WM426-10PK BODY BOLT PANEL INSERT PACK OF 10
- WM426-25PK BODY BOLT PANEL INSERT PACK OF 25



Window Net Protector

Our Clay Daly designed window net protector is a slick way to protect your window net when your deck is built so that your window net passes through it. Now available in 21" and 24" lengths. Protector is 1" wide and the slot is 3/16" wide.

- WM324 21" WINDOW NET PROTECTOR
- WM324-1 24" WINDOW NET PROTECTOR



Fender Washers

Aluminum fender washers for 1/4" flat head allen bolts. Available in black or silver aluminum and superlight delrin plastic.

- WM163A SILVER ALUMINUM FENDER WASHER
- WM163B BLACK ALUMINUM FENDER WASHER
- WM163D BLACK DELRIN FENDER WASHER



Body Brace Tab

Body support tabs can be bent to your specific angle or fastened to an angle iron to give you adjustability on your body bracing.

- WM2680625 BODY BRACE TAB 1/16"
- WM268125 BODY BRACE TAB 1/8"

Clamp On Hood Pin Mount

Trick clamp on hood pin mounts for 1, 1 1/4, 1 3/8, 1 1/2 and 1 3/4 round tubes. Use a 1/2" hood pin (sold separately). The mounts are available in 2 1/2, 4 1/2, 6 1/2, 8, or 9 1/2 heights from the center of the tube to where the pin screws in. Also available in a hinged design in 4 1/2, 5 1/2, 6 1/2, 7 1/2, 8 1/2 and 9 1/2 heights for 1 1/4 and 1 1/2 tubes. Hinged mount heights are measured from the bottom of the tube to where the pin screws in.

HINGED STYLE 1 1/4" TUBE

- WM258125045H CLAMP ON HINGED HOOD PIN MOUNT 1 1/4" TUBE 4 1/2" TALL
- WM258125055H CLAMP ON HINGED HOOD PIN MOUNT 1 1/4" TUBE 5 1/2" TALL
- WM258125065H CLAMP ON HINGED HOOD PIN MOUNT 1 1/4" TUBE 6 1/2" TALL
- WM258125075H CLAMP ON HINGED HOOD PIN MOUNT 1 1/4" TUBE 7 1/2" TALL
- WM258125085H CLAMP ON HINGED HOOD PIN MOUNT 1 1/4" TUBE 8 1/2" TALL
- WM258125095H CLAMP ON HINGED HOOD PIN MOUNT 1 1/4" TUBE 9 1/2" TALL

HINGED STYLE 1 1/2" TUBE

- WM25815045H CLAMP ON HINGED HOOD PIN MOUNT 1 1/2" TUBE 4 1/2" TALL
- WM25815055H CLAMP ON HINGED HOOD PIN MOUNT 1 1/2" TUBE 5 1/2" TALL
- WM25815065H CLAMP ON HINGED HOOD PIN MOUNT 1 1/2" TUBE 6 1/2" TALL
- WM25815075H CLAMP ON HINGED HOOD PIN MOUNT 1 1/2" TUBE 7 1/2" TALL
- WM25815085H CLAMP ON HINGED HOOD PIN MOUNT 1 1/2" TUBE 8 1/2" TALL
- WM25815095H CLAMP ON HINGED HOOD PIN MOUNT 1 1/2" TUBE 9 1/2" TALL

STANDARD STYLE 1" TUBE

- WM25810045 CLAMP ON HOOD PIN MOUNT 1" TUBE 4 1/2" TALL
- WM25810065 CLAMP ON HOOD PIN MOUNT 1" TUBE 6 1/2" TALL

STANDARD STYLE 1 1/4" TUBE

- WM258125025 CLAMP ON HOOD PIN MOUNT 1 1/4" TUBE 2 1/2" TALL
- WM258125045 CLAMP ON HOOD PIN MOUNT 1 1/4" TUBE 4 1/2" TALL
- WM258125065 CLAMP ON HOOD PIN MOUNT 1 1/4" TUBE 6 1/2" TALL
- WM258125095 CLAMP ON HOOD PIN MOUNT 1 1/4" TUBE 9 1/2" TALL

STANDARD STYLE 1 3/8" TUBE

- WM258137545 CLAMP ON HOOD PIN MOUNT 1 3/8" TUBE 4 1/2" TALL
- WM258137565 CLAMP ON HOOD PIN MOUNT 1 3/8" TUBE 6 1/2" TALL

STANDARD STYLE 1 1/2" TUBE

- WM25815025 CLAMP ON HOOD PIN MOUNT 1 1/2" TUBE 2 1/2" TALL
- WM25815045 CLAMP ON HOOD PIN MOUNT 1 1/2" TUBE 4 1/2" TALL
- WM25815065 CLAMP ON HOOD PIN MOUNT 1 1/2" TUBE 6 1/2" TALL
- WM25815080 CLAMP ON HOOD PIN MOUNT 1 1/2" TUBE 8" TALL
- WM25815095 CLAMP ON HOOD PIN MOUNT 1 1/2" TUBE 9 1/2" TALL

STANDARD STYLE 1 3/4" TUBE

- WM258175045 CLAMP ON HOOD PIN MOUNT 1 3/4" TUBE 4 1/2" TALL
- WM258175065 CLAMP ON HOOD PIN MOUNT 1 3/4" TUBE 6 1/2" TALL



Hood Pin Mount Swivel Adapter

These Ty Reedy inspired swivel adaptors bolt on to any height hood pin mount and accept any height hinge for offset hood pin mounting.

- WM258SA SWIVEL ADAPTOR



Hood Pins- No Flange

Lightweight 1/2"-20 fine thread hood pins with no flange.

WM259NF HOOD PIN 4" WITHOUT FLANGE



Hood Pins With Flange

Lightweight 1/2"-20 fine thread hood pins with the flange machined on them for the hood to sit on so you don't have to put a rubber hose on the pin. Pins are available in 2", 4" and 5" lengths.

WM2592 HOOD PIN 2" LONG W/ FLANGE
WM2594 HOOD PIN 4" LONG W/ FLANGE
WM2595 HOOD PIN 5" LONG W/ FLANGE



Adjustable Hood Pin Flange (pair)

Use the adjustable flange to hold your hood tight when standard flange pins don't fit. Sold in pair

WM259F ADJUSTABLE HOOD PIN FLANGE (PAIR)



Hood Pin Mount

These make mounting hood pins easy anywhere. Easy to adjust for that perfect fit. Designed for 3/8" of 1/2" fine thread hood pins. Hood pins sold separately.

WM195375 3/8"
WM195500 1/2"



Flush Mount Hood Pin Mount

Trick rivet on flush hood pin mounts available for 3/8"-24 and 1/2"-20 thread. Pin not included.

WM279375 FLUSH MOUNT HOOD PIN 3/8"
WM279500 FLUSH MOUNT HOOD PIN 1/2"



Hood Pin Clip

Not much Trickery here just a standard hood pin clip.

WM259C CLIPS FOR HOOD

Spring Steel Coil Keeper

This new spring steel coil keeper was inspired by Travis "Cowboy" Sauer and allows you to control your coil with ease.

WM421 COIL KEEPER



Super Lightweight Hood Pin Scuff Plates

WM201 SILVER
WM201B BLACK

Spring Steel Body Bracing

Our pre-cut to length spring steel is laser cut and burr free. Straps are 1/16" thick and 1" wide with 1/4" hole on both ends. Available in 1" increments from 5" to 30", measured by overall length.

WM341 SPECIFY LENGTH 5"-30" AND UP



Steel Bearing Suspension Cages

Our steel suspension cages have a split plate design that allows you to change plates if you need to without removing the hub, brake and cage. Standard cage comes with 4", 5", 6" and 7" shock drops. The 4 bar rods have 5 holes on the top and bottom to change indexing, with a 9" standard bar spacing. Our cage designs are second to none with options to fit any car or suspension design with bearing or bronze options in both single and double shear plate design. The Combo Cages allow you to bolt the brake caliper to the cage or use it as a brake floater in one package which give you a tuning option available by no other company. Our Combo Cages now can be built with the Triple Brake Option to also allow you to bolt the brake to the axle tube. Cages come complete with clamp rings and all hardware. Shock mount options to choose from are straight stud, or a bind free swivel mount and are sold separately.

Our cages now use our Quick Adjust technology that allows you to make a bar change without removing the bolt. To make a 4 bar change you loosen the bolt until the shouldered spacer is free, adjust up or down, reinsert the spacer and tighten in the new position. Our cage plates are now laser engraved for easy adjustment and replacement. [With our modular design, custom cages and cage combos are available.](#)

1/2" Shock Plate Options



WM200-3-QA



WM200-3-QA-S



WM200-3-QA-N



WM200-3-QA-RR-DS



WM200-3-QA-LR-DS



WM200-3-500-S-F-1

Bottom/Top Plate Options



3/16"

WM200-5-QA-187-S



3/16"

WM200-5-QA-187



1/2"

WM200-5-QA



1/4"

WM200-5-500-250-F-1



3/16"

WM200-4-500-187-B-1



WM200-24

Single Shear Left Rear Brake Combo Cage

Our Single Shear Left Rear Brake Combo Cage allows the brake floater option and the brake on the cage option in the same assembly. Two housings can be bolted together in the middle to lock the brake to the cage, or unbolted, to hook up the brake floater rod and run independently. Combo cages are now available with the triple brake option allowing you to also clamp the brake to the axle tube. The assembly comes complete minus shock mounts.

- WM200CQA SINGLE SHEAR LEFT REAR BRAKE COMBO CAGE
- WM200CQA-T-LR SINGLE SHEAR LEFT REAR TRIPLE BRAKE COMBO CAGE



Steel Narrow Single Shear

Our steel narrow single shear top double shear bottom cage now comes standard with quick adjust plates. This cage is our narrowest cage we make for cars with space issues. Cage comes complete with hardware and clamp rings. Shock mounts sold separate.

WM200NQA



Anti-Seize or grease your swivel shock mounts.

Shock Mount Options & Parts List



WM200-6	STRAIGHT SHOCK MOUNT
WM200-7	ANGLED SHOCK MOUNT (NO SWIVEL)
WM200-7-5	ANGLED SHOCK MOUNT 1/2" ADJUSTMENT (NO SWIVEL)
WM200-7-1	ANGLED SHOCK MOUNT 1" DROP (NO SWIVEL)
WM200-8	SHOCK MOUNT SWIVEL
WM200-8B	SHOCK MOUNT BOLT FITS OUR SWIVEL ONLY
WM200-9CB	SINGLE COUNTER BORE CLAMP RING
WM200-9LW	BRONZE CAGE ONLY CLAMP RING
WM200-9DCB	DOUBLE COUNTER BORE CLAMP RING
WM200-11	SINGLE SHEAR WM200NQA BOLT KIT
WM200-11NLW	BRONZE DOUBLE SHEAR WM200NLW BOLT KIT
WM200-11NDS	NARROW DOUBLE SHEAR WM200NDS BOLT KIT
WM200-12	REPLACEMENT BEARING
WM200NLWB	REPLACEMENT BRONZE BUSHING FOR WM200NLW CAGES
WM200-21-375L	CALIPER BRACKET LR THAT BOLTS TO HOUSING OR WM200-20HDL
WM200-21-375R	CALIPER BRACKET RR THAT BOLTS TO HOUSING OR WM200-20HDR

Steel Double Shear Bronze Cages

These double shear bronze suspension cages are the lightest and strongest on the market. Cages are built with our Quick Adjust Technology, so to make a 4 bar adjustment you simply loosen the bolt, pop out the puck spacer, move the bar, and tighten. Spacer package has high misalignment built in for maximum travel. Our standard built in level for quick reference on cage index. Fully modular so crash repair is simple unlike a welded cage. Cage comes with hardware, bronze side load washers, and clamp rings. Shock mounts sold separate.

- WM200NLWL STEEL DOUBLE SHEAR LR BRONZE STEEL
- WM200NLWR DOUBLE SHEAR RR BRONZE



Suspension Cage Housing Washer

Washer Made from oil impregnated bronze material. They go between the housing and the clamp rings when using bronze bushing cages.

- WM93W-LW BRONZE WASHER



Unhook shocks and 4 bars every 10 races to spin the cage and relocate the grease.

Steel Narrow Double Shear Bearing Suspension Cage

Our double shear bearing suspension cages are the strongest on the market. Cages are built with our Quick Adjust Technology, so to make a 4 bar adjustment you simply loosen the bolt, pop out the puck spacer, move the bar, and tighten. Spacer package has high misalignment built in for maximum travel. Our standard built in level for quick reference on cage index. Fully modular so crash repair is simple unlike a welded cage. We now offer a split LR cage to increase index and load in the LR suspension and also a HEAVY LR cage option to increase LR traction where rules allow. Cages are laser engraved and come with hardware and clamp rings. Shock mounts sold separate.

- WM200NDS STEEL NARROW DOUBLE SHEAR BEARING
- WM200NDS-0 NARROW CAGE DOUBLE SHEAR W/ ZERO INDEX
- WM200NDS-H HEAVY STEEL NARROW DOUBLE SHEAR BEARING
- WM200NDS-H-0 NARROW DOUBLE SHEAR HEAVY ZERO INDEX
- WM200S STEEL DOUBLE SHEAR BEARING SPLIT



Double Shear Left Rear Brake Combo Cage

Our Double Shear Left Rear Brake Combo Cage allows for the brake floater option and the brake on the cage option in the same assembly. Two independent housings that are bolted together in the middle to lock the brake to the cage or unbolted to hook up the brake floater rod and run separated. Also available in the Triple option to allow you to bolt brake to the axle tube. Assembly comes complete minus shock mounts.

- WM200CNDS DOUBLE SHEAR LEFT REAR BRAKE COMBO CAGE
- WM200CNDS-0 LR BRAKE COMBO DOUBLE SHEAR ZERO INDEX
- WM200CNDS-H HEAVY DOUBLE SHEAR LEFT REAR BRAKE COMBO CAGE
- WM200CNDS-H-0 LR BRAKE COMBO DBL SHEAR 0 INDEX HEAVY
- WM200CNDS-T-LR DOUBLE SHEAR LEFT REAR TRIPLE BRAKE COMBO CAGE
- WM200CNDS-T-LR-0 LR TRIPLE BRAKE OPTION DBL SHEAR 0 INDEX
- WM200CNDS-T-RR DOUBLE SHEAR RIGHT REAR TRIPLE BRAKE COMBO CAGE
- WM200NC NARROW BRAKE COMBO SUSPENSION CAGE
- WM200NC-0 NARROW BRAKE COMBO ZERO INDEX CAGE
- WM200NC-H NARROW BRAKE COMBO HEAVY SUSPENSION CAGE
- WM200NC-H-0 NARROW BRAKE COMBO HEAVY ZERO INDEX CAGE



Aluminum Bearing Suspension Cages

Fully modular aluminum design allows for unsurpassed adjustability and options for your dirt late model suspension. Shock plates come with 4", 5", 6" and 7" shock drop options. The 4-bar mounts are based on the 9" standard center to center spacing with plenty of holes to change the indexing of the cage. The Triple Brake Option Combo Cage allows you to bolt the brake caliper to the cage, axle tube, or use it as a brake floater. This package gives you a tuning option available by no other company. Cages come with all hardware and clamp rings included. Shock mounts are sold separately so you can choose from straight stud or the bind free swivel mounts. Cages are available in narrow and wide versions as shown. Plates can be bolted to the housing in many ways to accommodate most chassis manufacturers.



PARTS LIST	
WM300NDS-L	NARROW DOUBLE SHEAR LR SUSPENSION CAGE NO SHOCK MOUNTS
WM300NDS-R	NARROW DOUBLE SHEAR RR SUSPENSION CAGE NO SHOCK MOUNTS
WM300WDS-LR	WIDE DOUBLE SHEAR LR SUSPENSION CAGE NO SHOCK MOUNTS
WM300WDS-RR	WIDE DOUBLE SHEAR RR SUSPENSION CAGE NO SHOCK MOUNTS
WM300CNS-L	TRIPLE BRAKE OPTION DOUBLE SHEAR LR CAGE NO SHOCK MOUNTS
WM300CNS-R	TRIPLE BRAKE OPTION DOUBLE SHEAR RR CAGE NO SHOCK MOUNTS
WM300-1NDS	NARROW HOUSING WITH ROLLER BEARINGS
WM300-1WDS	WIDE HOUSING WITH ROLLER BEARINGS
WM300-3	SHOCK MOUNT FOR SWIVEL
WM300-3-1	SHOCK MOUNT FOR SWIVEL 1" DROP
WM300-9	CLAMP RING
WM300-20	STRAIGHT SHOCK MOUNT
WM300-25	ALUMINUM CLAMP BRACKET USES OUR WM200-8 SWIVEL



Double Shear Modular 2 Link Bracket

Complete double shear modular quick adjust design bracket for your 2 link car. This kit comes with axle clamp, shock plate, double shear plate, swivel shock mount, and mounting hardware.

- WM400-4QA DOUBLE SHEAR MODULAR 2 LINK BRACKET W/ONE SWIVEL MOUNT
- WM400-4QA-SC SHAW PLATE DOUBLE SHEAR MODULAR 2 LINK BRACKET W/ONE SWIVEL MOUNT

Double Shear Welded 2 Link Bracket

Complete double shear welded quick adjust design bracket for your 2 link car. This kit comes with axle clamp, shock plate, double shear plate, swivel shock mount, and mounting hardware.

- WM400-6LQA DOUBLE SHEAR WELDED LR 2 LINK BRACKET W/ONE SWIVEL MOUNT
- WM400-6RQA DOUBLE SHEAR WELDED RR 2 LINK BRACKET W/ONE SWIVEL MOUNT

IMCA Sport Mod Brackets

This is our new IMCA approved sport mod double shear quick adjust 2-link bracket. This brackets meets the new rules for non-adjustable shock mounts. Available for 4"/5"/6" shock drops.

- WM400-4-I-L-4 IMCA LR 2 LINK BRACKET 4" DROP
- WM400-4-I-L-5 IMCA LR 2 LINK BRACKET 5" DROP
- WM400-4-I-L-6 IMCA LR 2 LINK BRACKET 6" DROP
- WM400-4-I-R-4 MCA RR 2 LINK BRACKET 4" DROP
- WM400-4-I-R-5 MCA RR 2 LINK BRACKET 5" DROP
- WM400-4-I-R-6 IMCA RR 2 LINK BRACKET 6" DROP



PARTS LIST	
WM400-1W	WIDE MODULAR 2 LINK DOUBLE SHEAR AXLE CLAMP
WM200-3-QA	1/2" THICK QUICK ADJUST SHOCK PLATE
WM400-3-500-SC	1/2" THICK 1/2" HOLE SHAW CRAPSER SHOCK PLATE
WM400-3-QA-SC	1/2" THICK QUICK ADJUST SHAW STYLE SHOCK PLATE
WM400-3-QA-4-L	IMCA LR SHOCK PLATE 4"
WM400-3-QA-5-L	IMCA LR SHOCK PLATE 5"
WM400-3-QA-6-L	IMCA LR SHOCK PLATE 6"
WM400-3-QA-4-R	IMCA RR SHOCK PLATE 4"
WM400-3-QA-5-R	IMCA RR SHOCK PLATE 5"
WM400-3-QA-6-R	IMCA RR SHOCK PLATE 6"
WM400-4QA	DOUBLE SHEAR MODULAR 2 LINK BRACKET W/ONE SWIVEL MOUNT
WM400-4QA-SC	SHAW PLATE DOUBLE SHEAR MODULAR 2 LINK BRACKET W/ONE SWIVEL MOUNT
WM200-5-QA-187	3/16" THICK QUICK ADJUST 2 LINK PLATE
WM200-5-500-187	3/16" THICK 1/2" HOLE 2 LINK PLATE
WM400-5-QA-250-SC	1/4" THICK SHAW STYLE QUICK ADJUST 2 LINK PLATE
WM400-5-QA-250	IMCA DOUBLE SHEAR PLATE
WM400-6LQA	DOUBLE SHEAR WELDED LR 2 LINK BRACKET W/ONE SWIVEL MOUNT
WM400-6RQA	DOUBLE SHEAR WELDED RR 2 LINK BRACKET W/ONE SWIVEL MOUNT
WM400-WB	WIDE MODULAR CLAMP BOLT KIT
WM200-7-1	ANGLED SHOCK MOUNT (NO SWIVEL)
WM200-7-1-125-MS	ANGLED SHOCK MOUNT SPACER 1/8" THICK
WM200-8	SHOCK MOUNT SWIVEL





Safety Wire Caliper Bolts.



WM370 1/4" ALUMINUM THICK BIG GM BRAKE PAD SPACER



WM200-18-W-L

WM200-18L

Fabricated Steel Clamp on Metric Caliper Bracket

Our redesigned heavy duty fabricated steel clamp on metric caliper bracket is designed for aggressive brake packages and now feature a caliper support flat and tab for better braking. Axle clamp is 1" wide and the caliper bracket is 3/8" thick for superior strength. Must be ordered for the side needed so support tab works right.

- WM200-18L** LEFT SIDE BRACKET
- WM200-18R** RIGHT SIDE BRACKET
- WM200-18-W-L** WELD ON METRIC CALIPER MOUNT LR
- WM200-18-W-R** WELD ON METRIC CALIPER MOUNT RR



1/4" Metric Caliper Spacer

Metric caliper spacer for narrow rotors.

WM270 METRIC CALIPER SPACER 1/4"

Pinto Spindle Rear Mount Metric Caliper Bracket

Our modular design caliper brackets are pretty trick. This bolt together design mounts to the rear of the LF or RF spindle to cut down on spare parts. Made of 3/8" thick steel for added brake stability and more thread for the bolts.

WM303 METRIC CALIPER BRACKET



WM303F

WM303

Pinto Spindle Front Mount Metric Caliper Bracket

Our Metric caliper mount for a Pinto spindle that puts the caliper on the front to allow for better shock placement.

WM303F METRIC FRONT PINTO CALIPER MOUNT



WM200-20HD

Heavy Duty 2 Piece Metric Caliper Bracket

Our redesigned heavy duty modular steel clamp on metric caliper bracket is designed for aggressive brake packages and now feature a caliper support flat and tab for better braking. Axle clamp is 3/4" wide and the caliper bracket is 3/8" thick for superior strength. Must be ordered for the side needed so support tab works right.

- WM200-20HDL** LEFT SIDE BRACKET
- WM200-20HDR** RIGHT SIDE BRACKET



Super Light Caliper Brake Pad Spacer

These steel pad spacers are designed to fit Superlight Calipers. It spaces the pad for thin rotors or worn pads.

- WM196125** BRAKE PAD SPACER 1/8"
- WM196250** BRAKE PAD SPACER 1/4"



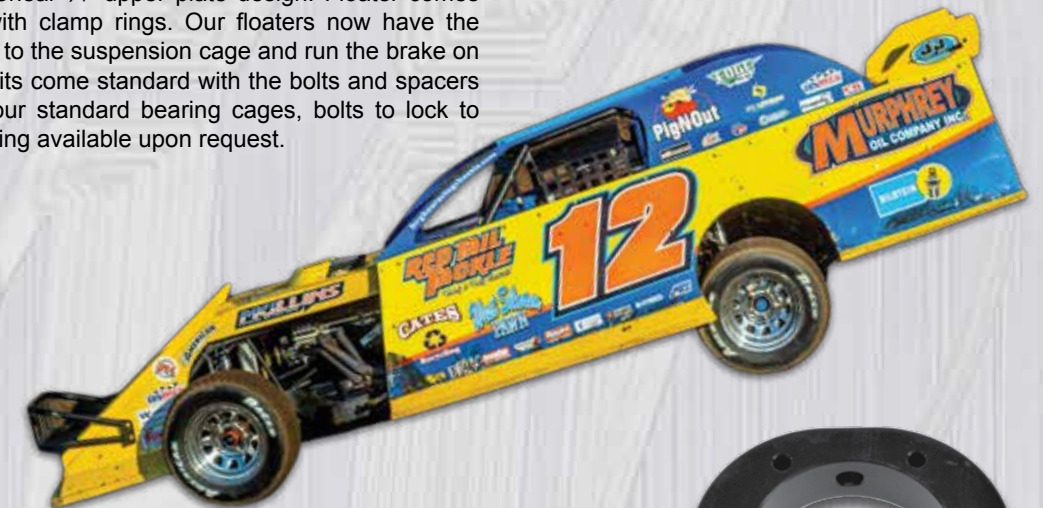
WM200-17CL

WM200-17

- WM200-17** HEAVY DUTY CLAMP RING
- WM200-17BL** BRAKE FLOATER LOCK UP CLAMP
- WM200-17CL** SUSPENSION CAGE LOCK UP CLAMP

Steel Brake Floaters

Dual bearing design fits GM metric caliper. Upper rod is offset 1" back from center line and the holes are 5 1/2" and 6 1/2" up from center. Brake Floaters are available for the Left Rear or Right Rear and with Single Shear 1/2" plate or Double Shear 1/4" upper plate design. Floater comes complete with clamp rings. Our floaters now have the tabs to lock to the suspension cage and run the brake on the cage. Kits come standard with the bolts and spacers to lock to our standard bearing cages, bolts to lock to our heavy housing available upon request.



PARTS LIST

- WM200-16H** HOUSING FOR STEEL BRAKE FLOATER
- WM200-16B** BOLT KIT FOR DOUBLE SHEAR BRAKE FLOATER
- WM200-16BSS** BOLT KIT FOR SINGLE SHEAR BRAKE FLOATER
- WM200-16LP-375** LEFT REAR CALIPER PLATE
- WM200-16RP-375** RIGHT REAR CALIPER PLATE
- WM200-16UP** UPPER PLATE FOR DOUBLE SHEAR FLOATER (PAIR)
- WM200-16UPSS** UPPER PLATE FOR SINGLE SHEAR FLOATER
- WM200-16L** LEFT REAR FLOATER DOUBLE SHEAR
- WM200-16R** RIGHT REAR FLOATER DOUBLE SHEAR
- WM200-16LSS** LEFT REAR FLOATER SINGLE SHEAR
- WM200-16RSS** RIGHT REAR FLOATER SINGLE SHEAR
- WM200-17** HEAVY DUTY CLAMP RING
- WM200-17BL** BRAKE FLOATER LOCK UP CLAMP
- WM200-17CL** SUSPENSION CAGE LOCK UP CLAMP



Two Piece Aluminum Clamp on Superlite Caliper Bracket for Axle Tube

WM300-24

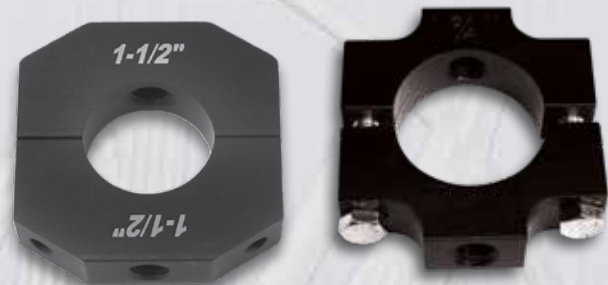
Chassis Clamps

Our clamps are used to mount lead, shocks and other items to the chassis with ease. No more drilling and welding tubes and tabs to your chassis. 1/2" -13 holes.

- WM1310 1" ROUND
- WM13125 1 1/4" ROUND
- WM131375 1 3/8" ROUND
- WM13150 1 1/2" ROUND
- WM131625 1 5/8" ROUND
- WM13175 1 3/4" ROUND
- WM132 2" ROUND
- WM13150H 1 1/2" ROUND WITH HEX HEAD BOLTS
- WM131750H 1 3/4" ROUND WITH HEX HEAD BOLTS

- WM1312501250 1 1/4" SQUARE
- WM131515 1 1/2" SQUARE
- WM1322 2" SQUARE

- WM1323 2" X 3" RECTANGLE



Chassis Clamp With Side Mount

These clamps are similar to our weight clamps but one half has a 1/2"-13 threaded side hole, and the other half has a 1/2"-13 threaded top hole.

- WM4131250 CLAMP FOR 1 1/4"
- WM4131500 CLAMP FOR 1 1/2"
- WM4131750 CLAMP FOR 1 3/4"



Steel Weld Accessory Clamp

Lightweight steel clamps that you can weld tabs or accessories to and bolt to your chassis.

- WM43150S STEEL WELD ACCESSORY CLAMP 1 1/2"
- WM431750S STEEL WELD ACCESSORY CLAMP 1 3/4"

Superlight Accessory Clamps

- WM43100SL SUPERLIGHT CLAMP 1"
- WM431250SL SUPERLIGHT CLAMP 1 1/4"
- WM43150SL SUPERLIGHT CLAMP 1 1/2"
- WM431750SL SUPERLIGHT CLAMP 1 3/4"



Lightweight Accessory Clamps

Handy clamps for mounting gadgets to your hot rod with ease. Holes are tapped 1/4" -20.

- WM43100L 1" BAR LIGHTWEIGHT
- WM431250L 1 1/4" BAR LIGHTWEIGHT
- WM431500L 1 1/2" BAR LIGHTWEIGHT
- WM431750L 1 3/4" BAR LIGHTWEIGHT

Heavy Duty Weight Clamp

Our Cole Queensland inspired heavy duty lead clamp is designed for the 1/2" bolt to pass through the clamp and lead and be tightened with a nyloc nut on opposite side of lead for increased strength. Available for 1-1/4", 1-1/2", and 1-3/4" round tubes.

- WM321250 1 1/4" HEAVY DUTY LEAD CLAMP
- WM321500 1 1/2" HEAVY DUTY LEAD CLAMP
- WM321750 1 3/4" HEAVY DUTY LEAD CLAMP



Steel Axle Tube Lead Clamp

Our new steel axle tube lead clamp is USRA legal and allows you to fasten lead to your rear axle tube to gain traction. Clamp has 1/2" holes on a 5" and 6" bolt center spacing.

- WM356S STEEL AXLE TUBE LEAD CLAMP



Axle Tube Lead Clamp

Our axle tube lead clamp allows you to fasten lead to your rear axle tube to gain traction. Clamp is drilled and tapped 1/2"-13 on a 5" and 6" bolt center spacing.

- WM356 AXLE TUBE LEAD CLAMP

Accessory Clamps

Handy clamps for mounting gadgets to your hot rod with ease. Clamps have 1/4" -20 holes on each end.

- WM43100 1" BAR STANDARD
- WM431250 1 1/4" BAR STANDARD
- WM43150 1 1/2" BAR STANDARD
- WM431750 1 3/4" BAR STANDARD
- WM431625 1 5/8" ACCESSORY CLAMP STANDARD
- WM43200 2" ACCESSORY CLAMP STANDARD
- WM431375 1 3/8" ACCESSORY CLAMP STANDARD



Bump Stop Suspension Adjuster

These adjusters allow you to run your bump stop package outside your shocks for quick tuning. The shaft slips apart once the upper bolt is removed from chassis for fast adjustments to your bumps.

- WM381C COMPLETE ADJUSTER WITH INDICATOR
- WM381 ADJUSTER ONLY
- WM381T TRAVEL INDICATOR ONLY



Center Pull Trailing Arm Clamp

These clamps mount the center pull trailing arm to the axle tube. Kit comes with the clamps, bolts and spacers to mount one trailing arm.

- WM442 TRAILING ARM CLAMP
- WM442K TRAILING ARM CLAMP KIT

Center Pull Rear Trailing Arm

Our Toby Nuttleman inspired center pull trailing arms have extra axle tube clearance for more range of motion. Simply add a 3/4" suspension tube (WM750T**) to finish off the trailing arm to length.

- WM441 TRAILING ARM



Lower Control Arm Shock Mount

These weld in shock mounts allow you to build a control arm with the shock location lower for a more effective suspension with additional travel. Now available with a double tube end style.

- WM371 LOWER SHOCK MOUNT TUBE
- WM372 LOWER SHOCK MOUNT DOUBLE TUBE
- WM227 SCREW IN LOWER BALL JOINT RING
- WM226 SCREW IN UPPER BALL JOINT RING



Inner Tie Rod Stud

A Nick Hoffman idea that we think you will enjoy. This replaces your stock inner tie rod which allows you to run a 5/8" heim on both ends of your steering arm.

- WM325 INNER TIE ROD STUD

Fabricated Chevelle Lower A-Frame

These Nick Hoffman designed fabricated Chevelle lowers are a monoball design with screw in ball joints for a bind free front suspension. Lower comes with monoballs, spacers, and weld on shock mount.

- WM331RF FABRICATED RF CHEVELLE LOWER WITH HELIX
- WM331LF FABRICATED LF CHEVELLE LOWER WITH HELIX

Lower Control Arm Bolt

Our new Justin O'Brien inspired pointed lower control arm bolts are perfect when your ride heights are set off the lower bolts, simply measure to the point. 3" between washers.

- WM433B POINTED LOWER BOLT



Chevelle Control Arm Bushings

These Kelly Shryock designed Chevelle lower control arm bushings are lightweight and greaseable for smooth travel. Installation weld fumes from Delrin are harmful, we suggest using our WM433WA steel weld alignment bushings when installing your bushings.

- WM433S SMALL BUSHING
- WM433L LARGE BUSHING
- WM433WA WELD ALIGNMENT BUSHINGS STEEL





Metric Trailing Arm Bolts

This Stefan Sybesma inspired bolt is the answer to your trailing arm needs. This bolt extends the hex end of the bolt out of the frame rail, allowing you to remove the bolt without losing your socket or fighting the frame rail.

WM326 METRIC TRAILING ARM BOLTS



5/8" Bent Suspension Tubes

Our 5/8" bent suspension tubes are DOM tube with machined ends. The tubes have a hex on each end for easy use and are laser engraved with length and thread direction.

- WM625T11B BENT 11" TUBE**
- WM625T12B BENT 12" TUBE**
- WM625T13B BENT 13" TUBE**
- WM625T14B BENT 14" TUBE**
- WM625T15B BENT 15" TUBE**



5/8" Suspension Tubes

Our 5/8" suspension tubes are now machined from DOM tubing. We machine a hex on each end and laser engrave them with length and thread direction for your convenience. Available in 1" increments from 4"-21", as well as 4.5", 5.5", 6.5", and 7.5".

WM625T SPECIFY LENGTH 4"-21" AND UP



Steel and Aluminum Shock Mounts

Use to mount shocks, 6th coil, and 5th coil setups to 1/4", 1/2", and 3/4" round tube. Available in 3 shock drops, standard is 2/4" below center line, 3/4" and 3/4" below center line now available. Mounts come with our WM148SL shock bolts.

ALUMINUM MOUNTS

- WM2211250 1 1/4" TUBE STANDARD 2 1/4" DROP MOUNT**
- WM2211250150 1 1/4" TUBE 1 1/2" EXTENDED 3 3/4" DROP MOUNT**
- WM221150 1 1/2" TUBE STANDARD 2 1/4" DROP MOUNT**
- WM221150100 1 1/2" TUBE 1" EXTENDED 3 1/4" DROP MOUNT**
- WM221150150 1 1/2" TUBE 1 1/2" EXTENDED 3 3/4" DROP MOUNT**
- WM2211750 1 3/4" TUBE STANDARD 2 1/4" DROP MOUNT**

STEEL MOUNTS

- WM2211250S 1 1/4" TUBE STANDARD 2 1/4" DROP MOUNT STEEL**
- WM221150S 1 1/2" TUBE STANDARD 2 1/4" DROP MOUNT STEEL**
- WM2211750S 1 3/4" TUBE STANDARD 2 1/4" DROP MOUNT STEEL**
- WM2211250150S 1 1/4" TUBE 1 1/2" EXTENDED 3 3/4" DROP MOUNT STEEL**
- WM221150150S 1 1/2" TUBE 1 1/2" EXTENDED 3 3/4" DROP MOUNT STEEL**



Clamp on Shock Mount

Clamp on steel shock mount allows you to mount a shock without welding and also allows adjustable height. Mount comes with WM200-8 shock swivel.

- WM3321250 CLAMP ON SHOCK MOUNT 1 1/4" TUBE**
- WM3321500 CLAMP ON SHOCK MOUNT 1 1/2" TUBE**
- WM3321750 CLAMP ON SHOCK MOUNT 1 3/4" TUBE**

Adjustable Shock Mounts

Our Kyle Strickler inspired adjustable shock mounts let you fine tune your cars dynamic attitude in 1/2" increments. Brackets sold as a kit with weld plates, all hardware, and are available for 1/4", 1/2", and 3/4" tubes.

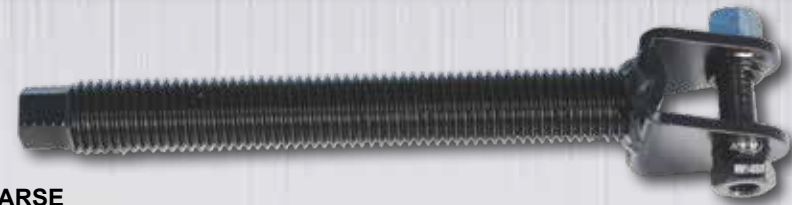
- WM4461250 SHOCK MOUNT FOR 1 1/4"**
- WM4461500 SHOCK MOUNT FOR 1 1/2"**
- WM4461750 SHOCK MOUNT FOR 1 3/4"**
- WM446-1-1250 ADJUSTABLE SHOCK MNT RAISED 1 1/4" TUBE**
- WM446-1-1500 ADJUSTABLE SHOCK MNT RAISED 1 1/2" TUBE**
- WM446-1-1750 ADJUSTABLE SHOCK MNT RAISED 1 3/4" TUBE**



Shock Mount Screw Jack

Our new shock mount screw jack has a narrow steel shock mount welded to a 9" screw jack. Available in 1" or 3/4" coarse thread and comes with WM148SS shock bolt.

- WM366750 SHOCK MOUNT SCREW JACK 3/4" COARSE
- WM366100 SHOCK MOUNT SCREW JACK 1" COARSE
- WM366100-7 SHOCK MOUNT 1" THREADED 7" LONG BOLT
- WM366750-7 SHOCK MOUNT 3/4" THREADED 7" LONG BOLT



Steel Clamp on Screw Jack Mount

Our new clamp on screw jack mount for 1" coarse screw jacks allows you to mount a screw jack without welding to your frame. Mounts are available for 1 1/4", 1 1/2" and 1 3/4" tubes. Screw jack sold separately.

- WM3681250 CLAMP ON SCREW JACK MOUNT 1 1/4" TUBE
- WM3681500 CLAMP ON SCREW JACK MOUNT 1 1/2" TUBE
- WM3681750 CLAMP ON SCREW JACK MOUNT 1 3/4" TUBE
- WM3671500 VERTICAL SCREW JACK MOUNT 1 1/2" TUBE
- WM3691500 CLAMP ON SCREW JACK MOUNT 1 1/2" SQUARE



Screw Jack with Clevis Shock Mount

Our New Jimmy Mars inspired Clevis style screw jacks are designed to use our shock bolts with the spacer machined on them and the opposite side spacer press fit into clevis so you no longer have to fumble spacers around. Screw jack is 1 1/8" fine thread steel and clevis is aluminum.

- WM428 SCREW JACK ASSEMBLY COMPLETE
- WM1125A ALUMINUM 1-1/8" JAM NUT 1-3/8" HEX
- WM1125S STEEL 1-1/8" JAM NUT 1-3/8" HEX

Shock Mount Extension

Shock mount extension bolts into your existing mount on your chassis lowering the spring table 2". Comes with shock bolt.

- WM243 ALUM SHOCK MNT EXTENSION
- WM243S STEEL SHOCK MNT EXTENSION



Extensions lower the spring table which helps your car gain side bite.



Coil Over Spring Slider

Lots of trickery in our spring sliders. The smoothest and most stable slider on the market. We use a linear DU bushing on a hardened shaft, along with a shaft stabilizing internal piston. No need to unscrew the nut to remove the spring. The spring cup opposite the adjusting nut is quickly removed with a clip. A four position locking mechanism assists with fine tuning. The Torrington bearing on the adjuster nut allows for easy adjustment and bind free spring travel. Our new slider cups capture the spring by the OD like our WM251-5-A adapter does, but now come standard to save you money. Sliders are available for 5" OD springs and 2 1/2" ID coil over springs. Available in coarse or fine thread.



Clean and grease your sliders/Torrington bearings every 10 nights.



WM251-10BC

WM251C-2.5

Spring Alignment Plate

This spring alignment plate works with soft rate springs using the OD to align the spring instead of the ID on our coil over spring sliders.

- WM251-5-A SPRING ALIGNMENT PLATE

Adjuster Wrench For Slider

- WM252 ADJUSTER SLIDER WRENCH
- WM252-S STUBBY SLIDER WRENCH



WM251-15



WM251-14



WM251-23

- WM251F 5" SPRING SLIDER 24" EXTENDED FINE THREAD
- WM251C 5" SPRING SLIDER 24" EXTENDED COARSE THREAD
- WM251F-2.5 2 1/2" SPRING SLIDER 24" EXTENDED FINE THREAD
- WM251C-2.5 2 1/2" SPRING SLIDER 24" EXTENDED COARSE THREAD
- WM251-2F 5" SPRING SLIDER 26" EXTENDED FINE THREAD
- WM251-2C 5" SPRING SLIDER 26" EXTENDED COARSE THREAD
- WM251-28C 5" SPRING SLIDER 28" EXTENDED COARSE
- WM251-2F-2.5 2 1/2" SPRING SLIDER 26" EXTENDED FINE THREAD
- WM251-2C-2.5 2 1/2" SPRING SLIDER 26" EXTENDED COARSE THREAD
- WM251-0 5" SPRING SLIDER 21" EXTENDED
- WM251-0-2.5 2 1/2" SPRING SLIDER 21" EXTENDED
- WM251-0-2.5-A ALUMINUM 2 1/2" SPRING SLIDER 21" EXTENDED
- WM251-10BF STEEL FINE THREAD BODY BARE
- WM251-10BC STEEL COARSE THREAD BODY BARE
- WM251-12 REPLACEMENT SHAFT FOR WM251-0 SHORT SLIDER
- WM251-13 2" EXTENSION FOR SLIDER SPRING CUP
- WM251-14 SLIDER WORK STATION
- WM251-15 STACK SPRING ADAPTER FOR SLIDER
- WM251-16 SPRING PIN FOR LOCK
- WM251-3 STANDARD LENGTH REPLACEMENT SHAFT
- WM251-4 2" LONGER REPLACEMENT SHAFT
- WM251-5 REMOVABLE SPRING CUP WITH CLIP
- WM251-5-1 REMOVABLE SLIDER CUP OD ALIGNMENT
- WM251-6 SPRING CUP FOR ADJUSTER NUT SIDE
- WM251-6-1 SLIDER CUP NUT SIDE OD ALIGNMENT
- WM251-7F FINE THREAD ADJUSTER NUT WITH LOCK
- WM251-7C COARSE THREAD ADJUSTER NUT WITH LOCK
- WM251-7SF STACK ADAPTOR FINE THREAD ADJUSTER NUT WITH LOCK
- WM251-7SC STACK ADAPTOR COARSE THREAD ADJUSTER NUT WITH LOCK
- WM251-8 COMPLETE LOCK WITH BOLT & PIN
- WM251-9 REBUILD KIT (PISTON, BUSHING, SNAP RING, NUT, O-RING)
- WM251-9B BUSHING ONLY FOR SLIDER
- WM251-23 2" SLIDER SHAFT EXTENSION
- WM251-24 1" SLIDER SHAFT EXTENSION
- WM165BO 5" TORRINGTON BEARING

Tubular Tie Rods

Our tubular style right front tie rod is made from machined thick wall DOM and is available with stock inner or heim inner tie rod. This version is IMCA legal.

- WM311SI COMPLETE TUBULAR RF TIE ROD WITH STOCK INNER (18-1/4"-20")
- WM311HI COMPLETE TUBULAR RF TIE ROD WITH HEIM INNER (18 3/4"-20")
- WM311ST TIE ROD TUBE FOR SHORT STOCK LH INNER (15" TUBE ONLY)
- WM311HT TUBULAR TIE ROD FOR LH HEIM INNER (16" TUBE ONLY)
- WM310HI LF TIE ROD WITH LH HEIM INNER (18 1/2"-19 3/4")
- WM310SI LF TIE ROD WITH SHORT LH STOCK INNER (18 1/2"-19 3/4")



1/2" and 5/8" Double Adjusters

Has a 1/2" center with 1 3/4" thread on each end.

- WM125500 1/2" FINE STAINLESS
- WM125625 5/8" FINE STAINLESS
- WM125625CRS 5/8" FINE STEEL

Alloy Steel 5/8" Adjuster

Alloy steel double adjuster is 5/8" - 18 LH male and 5/8" - 18 RH female thread. Adjuster is 4 1/4" long.

- WM245RHF RH FEMALE 5/8" ADJUSTER
- WM245LHF LH FEMALE 5/8" ADJUSTER

Alloy Steel Adjuster

Our 3 3/8" long alloy steel double adjuster is 5/8"-18 RH male and 1/2"-20 LH female thread. WM391 ALLOY ADJUSTER



Double Adjuster

This is a male female style adjuster that we use in our limit chain adjuster. We have been selling them to chassis builders who have been building their upper a-frames with them so caster/camber adjustments are quick and easy. We have the weld bungs for 1" OD tube and the WM226 ball joint rings as well.

- WM750500A 3/4"-16 RH MALE 1/2"-20 LH ADJUSTER

Weld Bungs

Steel weld bungs for 1" OD .063 and .083 wall tube for building upper a-frames with our WM750500A adjusters and 5/8" suspension tubes.

- WM750100W063 3/4" WELD BUNG RH FITS 1" OD .063 WALL
- WM750100W083 3/4" WELD BUNG RH FITS 1" OD .083 WALL
- WM625100W063R 5/8" WELD BUNG FITS 1" OD .063 WALL RH
- WM625100W063L 5/8" WELD BUNG FITS 1" OD .063 WALL LH
- WM625100W083L 5/8" WELD BUNG FITS 1" OD .083 WALL LH
- WM625100W083R 5/8" WELD BUNG FITS 1" OD .083 WALL RH
- WM750100W083LH 3/4" WELD BUNG LH FITS 1" OD .083 WALL

Door Bar Plate Clamp

Our Eldora Speedway approved door bar plate clamps fasten your 1/8" steel door plate to 1 1/2" and 1 3/4" door bars. Rules require 6 per car and come with the 1/2" bolts.

- WM397 DOOR PLATE CLAMP 1 1/2"
- WM3971750



Camber Shims

Camber Shims take the place of a hard to handle stack of washers when making a camber change. Our 6" center shim has a sure lock design to help keep them in place. Also available for GM Metric size chassis.



GM METRIC 6-15/16"

- WM35125M 1/8"
- WM35187M 3/16"
- WM35250M 1/4"
- WM35500M 1/2"

STANDARD 6"

- WM350625 1/16"
- WM35125 1/8"
- WM35187 3/16"
- WM35250 1/4"
- WM35375 3/8"
- WM35500 1/2"
- WM35750 3/4"
- WM35100 1"
- WM351500 1 1/2"



Adjustable Rack End

Slotted bump steer adjustable ends for standard rack shafts. They bolt over the shaft and secure with 5/8" bolt. Sold individually.

- WM202 ADJUSTABLE RACK END FOR STANDARD RACK

Shock Mount Bolts

Don't trust the pin? These are a cross between a bolt and a shock pin using a nut like a bolt would. Spacer part is machined on like the pins, thread is 1/2"-13 coarse. Bolts available in steel or aluminum.

- WM200-8B SHOCK BOLT FOR WM200-8 SWIVEL
- WM148SL 2 3/4" LONG BOLT STEEL
- WM148SS 2 1/8" SHORT BOLT STEEL
- WM148AL 2 3/4" LONG BOLT ALUM.
- WM148AS 2 1/8" SHORT BOLT ALUM.



Shock Pins

Aluminum and steel quick-change shock pins.

- WM48AL 2 3/8" ALUMINUM LONG
- WM48SL 2 3/8" STEEL LONG
- WM48AM 1 7/8" ALUMINUM MEDIUM
- WM48SM 1 7/8" STEEL MEDIUM





Screwjack Funnel Kit

Kit quickly adapts to screw jacks, panhard bar adjuster, or sway bar adjuster. Brings the funnel up where it is easy to get to. Adapts to 3/8" or 1/2" square drive with a 1/2" square funnel. Kit will adjust from 6" to 17" in length.

- WM44375 FUNNEL KIT 3/8"
- WM44500 FUNNEL KIT 1/2"
- WM25 FUNNEL ONLY
- WM44B TIN BEARING 1/2" I.D.



5th & 6th Coil Combo Mount

Our combo mount replaces having to slide a single clamp mount, or having multiple clamp mounts, when making changes to the location of your 5th coil. It also allows you to be assured of proper alignment of the top mounts when using our lift arms, as the holes in this mount line up with the holes in our newly designed lift arm.

- WM336 5TH & 6TH COIL COMBO MOUNT 1 1/2" ROUND
- WM336S 5TH & 6TH COIL COMBO MOUNT 1 1/2" SQUARE



Lift Bar Strut Support Clamp

Clamps to rear end tube to run support strut to the lift bar for lateral support.

- WM215SC LIFT BAR STRUT SUPPORT CLAMP
- WM215ST20 SHORT LIFT ARM STRUT SUPPORT 20"
- WM215ST26 LONG LIFT ARM STRUT SUPPORT 26"



Dirt Late Model Lift Arm

We've taken the lift arm to the next level with this two piece billet beauty. With a monoball bearing on the bottom arm, the top arm has a standard heim with a double adjuster to make adjusting pinion angle a breeze. We have two lengths available, a short version and a long version with 5th coil mounts on the long at 35", 37", 39", and 41" and on the short at 29", 31", 33" and 35" from the center of the axle tube. The 6th coil mount is 2" forward of farthest 5th coil mount. Bar comes complete with all rear end brackets and hardware to mount to your hot rod. Rear end brackets now have 2 sets of holes for a high and low pinion mount option in one bar.

- WM315DS SHORT LIFT ARM COMPLETE WITH ALL HARDWARE
- WM315DL LONG LIFT ARM COMPLETE WITH ALL HARDWARE



High Misalignment Spacers



Anti-Seize or grease high-misalignment spacers for easy disassembly.

- WM625250HM 5/8" HIGH MISALIGNMENT SPACER 1/4" LONG
- WM625375HM 5/8" HIGH MISALIGNMENT SPACER 3/8" LONG
- WM6254375HM 5/8" HIGH MISALIGNMENT SPACER 7/16" LONG
- WM625500HM 5/8" HIGH MISALIGNMENT SPACER 1/2" LONG
- WM625562HM 5/8" HIGH MISALIGNMENT SPACER 9/16" LONG
- WM625625HM 5/8" HIGH MISALIGNMENT SPACER 5/8" LONG
- WM625750HM 5/8" HIGH MISALIGNMENT SPACER 3/4" LONG
- WM6258125HM 5/8" HIGH MISALIGNMENT SPACER 13/16" LONG
- WM625875HM 5/8" HIGH MISALIGNMENT SPACER 7/8" LONG
- WM625100HM 5/8" HIGH MISALIGNMENT SPACER 1" LONG
- WM6251062HM 5/8" HIGH MISALIGNMENT SPACER 1 1/16" LONG
- WM6251125HM 5/8" HIGH MISALIGNMENT SPACER 1 1/8" LONG
- WM6251250HM 5/8" HIGH MISALIGNMENT SPACER 1 1/4" LONG
- WM6251375HM 5/8" HIGH MISALIGNMENT SPACER 1 3/8" LONG
- WM62514375HM 5/8" HIGH MISALIGNMENT SPACER 1 7/16" LONG
- WM6251500HM 5/8" HIGH MISALIGNMENT SPACER 1 1/2" LONG
- WM6251625HM 5/8" HIGH MISALIGNMENT SPACER 1 5/8" LONG
- WM6251750HM 5/8" HIGH MISALIGNMENT SPACER 1 3/4" LONG
- WM6251875HM 5/8" HIGH MISALIGNMENT SPACER 1 7/8" LONG
- WM625200HM 5/8" HIGH MISALIGNMENT SPACER 2" LONG
- WM62520625HM 5/8" HIGH MISALIGNMENT SPACER 2 1/16" LONG
- WM6252125HM 5/8" HIGH MISALIGNMENT SPACER 2 1/8" LONG
- WM6252250HM 5/8" HIGH MISALIGNMENT SPACER 2 1/4" LONG
- WM6252375HM 5/8" HIGH MISALIGNMENT SPACER 2 3/8" LONG
- WM6252500HM 5/8" HIGH MISALIGNMENT SPACER 2 1/2" LONG
- WM6252625HM 5/8" HIGH MISALIGNMENT SPACER 2 5/8" LONG
- WM6252750HM 5/8" HIGH MISALIGNMENT SPACER 2 3/4" LONG
- WM625300HM 5/8" HIGH MISALIGNMENT SPACER 3" LONG
- WM6253500HM 5/8" HIGH MISALIGNMENT SPACER 3 1/2" LONG
- WM625HM 5/8" HIGH MISALIGNMENT WASHER 3/16" LONG



Spacers

We make a variety of steel & aluminum spacers. Spacers for 3/4", 5/8", and 1/2" bolts in many lengths. Here are a few standard sizes:

- WM625250T 5/8" X 1/4"
- WM625500T 5/8" X 1/2"
- WM625750T 5/8" X 3/4"
- WM625100T 5/8" X 1"
- WM6251250T 5/8" X 1 1/4"
- WM6251500T 5/8" X 1 1/2"
- WM625290S 5/8" BOLT X 1/2" LONG 3/4" HM
- WM750250 3/4" X 1/4"
- WM750500 3/4" X 1/2"
- WM750750 3/4" X 3/4"
- WM750100 3/4" X 1"
- WM7501250 3/4" X 1 1/4"





Universal Small 5 Wheel Spacers

Universal Aluminum small 5 spacers to fit 5x5", 5x4 1/2", 5x4 3/4".

- WM1430625 1/16" THICK SPACER
- WM143125 1/8" THICK SPACER
- WM143250 1/4" THICK SPACER
- WM143500 1/2" THICK SPACER
- WM143750 3/4" THICK SPACER
- WM143100 1" THICK SPACER

Universal Wide 5 Wheel Spacer

Spacer works with any wide 5 wheels. Spacer is 1" thick billet aluminum and comes with screw in studs.

- WM144 1" SPACER



Wide 5 Wheel Spacer

Fits any wide 5 hub. Fine tune your track width to the max. Available in 1/16", 1/8", 1/4", and 1/2".

- WM1860625 WIDE 5 SPACER 1/16"
- WM186125 WIDE 5 SPACER 1/8"
- WM186250 WIDE 5 SPACER 1/4"
- WM186500 WIDE 5 SPACER 1/2"



Clamp on 1/2" Heim Mount

Clamps mount any 1/2" heim to a 1 1/4", 1 1/2", 1 3/4", or 2" tube. Designed to get the heim as close to the tube as we could. It works well on suspension limiters where length can be an issue.

- WM4271250 1 1/4" TUBE MOUNT
- WM4271500 1 1/2" TUBE MOUNT
- WM4271750 1 3/4" TUBE MOUNT
- WM427200 2" TUBE MOUNT



Limit Chain Axle Clamp

Limit chain clamp for 3" axle tubes. Now has 3/8" bolt with double shear tabs for strength.

- WM293 LIMIT CLAMP



6th Coil Mount for 5" Spring

Our 5" diameter 6th coil is available with or without the spring. We offer rates of 300#, 400#, 450#, and 500# springs for fine tuning. Choose the part # with the spring rate you need or buy it bare.

- WM223 ALUMINUM 6TH COIL W/O SPRING
- WM223300 ALUMINUM 6TH COIL W/ 300# AF COIL
- WM223400 ALUMINUM 6TH COIL W/ 400# EIBACH
- WM223450 ALUMINUM 6TH COIL W/ 450# EIBACH
- WM223500 ALUMINUM 6TH COIL W/ 500# EIBACH



Suspension Travel Limiter Can

Lightweight Aluminum Can designed for a bump stop/biscuit or spring. This screw together can style assembly allows you to run the biscuit or spring of choice without the competition seeing what you're doing. Limiters are sold bare, with spring, or with puck package.

- WM291 ALUMINUM CAN BARE
- WM291-1 BARE CAN 1" LONGER
- WM291-1-750 BARE CAN 1" LONGER WITH 3/4" DOUBLE ADJUSTER
- WM291350 CAN WITH 350# SPRING
- WM291400 CAN WITH 400# SPRING
- WM291450 CAN WITH 450# SPRING
- WM291500 CAN WITH 500# SPRING
- WM291600 CAN WITH 600# SPRING
- WM291BG-T LIMITER WITH BLUE/GREY PUCKS TAPERED WASHERS
- WM291RG-F LIMITER WITH RED/GREY PUCKS FLAT WASHERS
- WM291-1-RG-F LIMITER RED/GREY PUCKS FLAT WASHERS 1" LONGER W/ADJUSTER
- WM291-1-BG-T LIMITER BLUE/GREY PUCKS TAPERED WASHERS 1" LONGER W/ADJUSTER
- WM291T TRAVEL INDICATOR FOR LIMITERS
- WM380WHT OPEN STYLE LIMITER WITH WHITE FOAM
- WM380BLU OPEN STYLE LIMITER WITH BLUE FOAM
- WM380BLK OPEN STYLE LIMITER WITH BLACK FOAM



Adjustable Chain Limiter Cans

Our limiter cans are a threaded sleeve style to easily adjust chain length with 2" of overall adjustment. We sell these bare or with a puck package. Can will fit up to a 3" tall and 2 1/4" OD bump stop or spring. Available in steel or aluminum.

- WM91 ALUMINUM ADJUSTABLE LIMITER CAN BARE
- WM91RGF ALUMINUM LIMITER W/ RED/GREY PUCKS
- WM92 STEEL ADJUSTABLE LIMITER CAN BARE
- WM92RGF STEEL LIMITER W/ RED/GREY PUCKS
- WM92RRF STEEL LIMITER WITH RED/RED PUCKS



Small Spring 6th Coil

This is our new version of the small 2" diameter spring 6th coil with better adjustability. Uses same spring as our WM291 can style. Available bare or with your desired spring rate.

- WM380 SMALL SPRING 6TH COIL BARE
- WM380350 SMALL SPRING 6TH COIL WITH 350 SPRING
- WM380400 SMALL SPRING 6TH COIL WITH 400 SPRING
- WM380450 SMALL SPRING 6TH COIL WITH 450 SPRING
- WM380500 SMALL SPRING 6TH COIL WITH 500 SPRING
- WM380600 SMALL SPRING 6TH COIL WITH 600 SPRING



Big Spring 6th Coil Mount

Aluminum 6th coil mount for 4" springs. Spring not included.

- WM80 COIL MOUNT



Quick Adjust Suspension Limit Chain Mount

Our Brad Waits designed quick change limit chain adjuster allows you to change your chain length by 1/4" simply pulling a pin, moving to the next hole and inserting the pin. You can make a chain adjustment in seconds with no tools. The aluminum version comes with a Belleville spring stack to give you a cushion at the end of the chain to keep your tire on the track. Available in aluminum with the Belleville stack or an IMCA legal steel version.

- WM269100A QUICK ADJUST WITH BELLEVILLE SPRING 1"
- WM2691250A QUICK ADJUST WITH BELLEVILLE SPRING 1 1/4"
- WM2691375A QUICK ADJUST WITH BELLEVILLE SPRING 1 3/8"
- WM269150A QUICK ADJUST WITH BELLEVILLE SPRING 1 1/2"
- WM2691750A QUICK ADJUST WITH BELLEVILLE SPRING 1 3/4"
- WM26920A QUICK ADJUST WITH BELLEVILLE SPRING 2"
- WM269100S STEEL QUICK ADJUST MOUNT 1" W/O BELLEVILLE SPRING
- WM2691250S STEEL QUICK ADJUST MOUNT 1 1/4" W/O BELLEVILLE SPRING
- WM2691375S STEEL QUICK ADJUST MOUNT 1 3/8" W/O BELLEVILLE SPRING
- WM269150S STEEL QUICK ADJUST MOUNT 1 1/2" W/O BELLEVILLE SPRING
- WM2691750S STEEL QUICK ADJUST 1 3/4" W/O BELLEVILLE SPRING
- WM26920S STEEL QUICK ADJUST 2" W/O BELLEVILLE SPRING
- WM269S STEEL CHAIN MOUNT WITHOUT BELLEVILLE SPRING NO CLAMP
- WM269A ALUMINUM CHAIN MOUNT WITH BELLEVILLE SPRING NO CLAMP
- WM269BS BOLT IN STEEL QUICK ADJUST MOUNT
- WM269BSW BOLT IN STEEL QUICK ADJUST MOUNT WITH BELLEVILLE SPRING
- WM269RS REPLACEMENT BELLEVILLE STACK
- WM269SIS STEEL INTERNAL SLEEVE FOR WM269
- WM269SIS-L 1" LONGER STEEL INNER SLEEVE FOR WM269
- WM269AES ALUMINUM EXTERNAL SLEEVE FOR WM269A
- WM269SES STEEL EXTERNAL SLEEVE FOR WM269S
- WM314C 12" LIMIT CHAIN
- WM314S 12" HEAT SHRINK SLEEVE FOR CHAIN



Limit Chain Frame Mount

Our adjustable chain mount allows you to align your chain properly and adjust the length without unhooking the chain. Comes complete with clevis, adjuster and mount. Order to fit 1", 1 1/4", 1 3/8", 1 1/2", 1 3/4", or 2" tube.

- WM214100 LIMIT CHAIN FRAME MNT 1" TUBE
- WM2141250 LIMIT CHAIN FRAME MNT 1 1/4" TUBE
- WM2141375 LIMIT CHAIN FRAME MNT 1 3/8" TUBE
- WM214150 LIMIT CHAIN FRAME MNT 1 1/2" TUBE
- WM2141750 LIMIT CHAIN FRAME MNT 1 3/4" TUBE
- WM21420 LIMIT CHAIN FRAME MNT 2" TUBE
- WM214B BOLT IN LIMIT CHAIN MNT

Lower Control Arm Droop Clamp

Droop clamps allow you to fasten a limit chain to your 1 1/4" tube style lower in double shear.

- WM3431250 LOWER DROOP CLAMP 1 1/4" TUBE



Clamps for Limit Chains

- WM21410C CLAMP FOR 1"
- WM2141250C CLAMP FOR 1 1/4"
- WM2141375C CLAMP FOR 1 3/8"
- WM214150C CLAMP FOR 1 1/2"
- WM2141750C CLAMP FOR 1 3/4"
- WM21420C CLAMP FOR 2"



Suspension Limit Chain Holder with Bearing

While not IMCA modified legal, this is the perfect fit for the open market. This chain holder is on a bearing, making it virtually bind free, allowing the LR to stay free when going through the range of travel.

- WM210AK ALUM KIT W/ HOLDER & CLAMP RINGS
- WM210SK STEEL KIT W/ HOLDER & CLAMP RINGS

Clamp On Pull Bar Bracket

Trick Chris Brown inspired clamp on pull bar bracket for 1 1/2" round or square tubes in steel or aluminum. Adjustment holes are on an arc to keep the pinion angle right when changing the pull bar and have spacers to reduce the 3/4" heim down to a 5/8" bolt.



- WM290S STEEL BRACKET 1 1/2" ROUND
- WM290SS STEEL BRACKET 1 1/2" SQUARE
- WM290SO STEEL OFFSET 1" LEFT BRACKET 1 1/2" SQUARE



Large Puck Pull Bar

This is our new large puck pull bar. This pull bar will fit 3 1/2" OD 4 3/4" long pucks or 2 1/2" OD springs. We sell it bare or with the puck of your choice.

- WM660 BARE LARGE PUCK BAR
- WM660C COMPLETE LARGE PUCK BAR
- WM660B BLACK PUCK 2-60DUR/3-80DUR
- WM660B-1 BLUE PUCK 3-60DUR/2-80DUR
- WM660B-2 PURPLE PUCK 4-60DUR/1-80DUR
- WM660C-B LARGE PUCK BAR WITH BLUE BUSHING
- WM660C-P LARGE PUCK BAR WITH PURPLE BUSHING



Clamp On 3/4" Heim Mount

Clamp mounts a 3/4" heim 2 5/8" off tube centerline. Mounts available in 1 1/2", 1 3/4" round tube 1 1/2", 2" square tube in steel and 1 1/4" round tube in aluminum. Mounts use a 5/8" bolt.

- WM3861500 1 1/2" ROUND TUBE
- WM3861750 1 3/4" ROUND TUBE
- WM3861750A 1 3/4" ALUMINUM ROUND TUBE
- WM3871500 1 1/2" SQUARE TUBE
- WM387200 2" SQUARE TUBE



Q/C Pull Bar Brackets

Triple slot quick change pull bar brackets use our quick adjust technology. Slot placement of 1" in front of axle center, and 1" and 3" behind axle centerline. Brackets also have a 90/10 shock hook up. Sold in pairs with 2 quick adjust pucks. Center spacers sold separately WM750100.

- WM292QC QUICK CHANGE PULL BAR BRACKETS SET



3/4" Suspension Tubes

Tired of fighting with your tubes and jam nuts when making length adjustments? Our steel suspension tubes have a hex machined on each end so that you can use a wrench on the tube when tightening or breaking loose the jam nuts. Tubes are machined from DOM steel tube for strength. Tubes are available in 1" increments from 3" to 32".

- WM750T SPECIFY LENGTH 3"- 34" LONG SUSPENSION TUBE





WM360-100-80



Sleeve Style Enclosed Pull Bar

Our Jimmy Mars inspired version of a closed sleeve style pull bar features a 3" long bronze bushing to eliminate shaft flex under load. Bar accepts small diameter pucks. Bar is available with a 3/4" threaded end cap or a bronze bushing end cap for a brake bushing separate style bar. We can build it with our pucks to fit your desired rate that you want or you can buy a bare version and run your own pucks.

- WM360C-1-BS COMPLETE 7 PUCK BAR WITH OUR PUCKS WITH BRAKE SEPARATE END
- WM360C-BW-BS COMPLETE BELLEVILLE WASHER BAR WITH BRAKE SEPARATE END
- WM360B-750 BARE BAR NO PUCKS WITH 3/4" THREADED END
- WM360B-BS BARE BAR NO PUCKS WITH BRAKE SEPARATE END
- WM360B-1-BS BARE BAR NO PUCKS 1" LONGER WITH BRAKE SEPARATE
- WM360-100-80 PULL BAR BRAKE PUCK 80 DUROMETER
- WM360-100-90 PULL BAR BRAKE PUCK 90 DUROMETER
- WM360-750-2125-70 BLUE 70 DUROMETER PUCK
- WM360-750-2125-80 PURPLE 80 DUROMETER PUCK
- WM360-750-2125-90 BLACK 90 DUROMETER PUCK
- WM360BW-102 BELLEVILLE WASHER .102 THICK
- WM360BW-068 BELLEVILLE WASHER .068 THICK
- WM360T TRAVEL INDICATOR FOR SLEEVE BARS



Open Style Puck Pull Bar

Our open style puck pull bar comes standard with brake separate from the pull side. It has a long bronze bushing to eliminate shaft flex under load. This bar can be built to suit your rate curve for different style modifieds with a tapered washer style or domed washer style.

- WM460B BARE PUCK STYLE PULL BAR NO PUCKS
- WM460C COMPLETE PUCK STYLE PULL BAR
- WM360-750-50 RED 50 DUROMETER PUCK
- WM360-750-60 GREY 60 DUROMETER PUCK
- WM360-750-70 BLUE 70 DUROMETER PUCK
- WM360-750-80 PURPLE 80 DUROMETER PUCK
- WM360-750-90 BLACK 90 DUROMETER PUCK
- WM360-DW DIVIDER WASHER FLAT
- WM360-EW END WASHER FLAT
- WM360-W-1 PUCK BAR WASHER DISHED AND DOMED
- WM360-W-2 PUCK BAR WASHER DISHED AND FLAT
- WM360-W-3 PUCK BAR WASHER 15 DEGREE TAPER
- WM360-W-4 PUCK BAR WASHER FLAT THIN DIVIDER



Spring Pull Bar

Our spring style pull bar comes standard with brake separate from the pull side and also has a long bronze bushing to eliminate shaft flex under load. This pull bar allows you to use the spring of your choice with or without your internal pucks to build any rate curve you desire.

- WM560 SPRING PULL BAR
- WM560-P-125 PACKER 1/8" THICK



Coil Over Kit for 5" Springs

Our Clint Hatlestad designed 5" coil over kit is a lightweight aluminum and plastic design. We changed our kits to capture the spring by the OD to keep the spring linear through travel and have the option to use a 5" Torrington bearing on the spring. Kits are available for Penske, JRI, AFCO, FOX, Bilstein, Integra Standard, Integra Double Adjustable (IDA), Ohlins, and QA1.

- WM308A 5" COIL OVER KIT FOR AFCO SHOCKS
- WM308A-RC REMOVABLE SPRING CUP FOR AFCO C/O KIT
- WM308P 5" COIL OVER KIT FOR PENSKE SHOCKS
- WM308J 5" COIL OVER KIT FOR JRI SHOCKS
- WM308F 5" COIL OVER KIT FOR FOX SHOCKS
- WM308F-RC REMOVABLE SPRING CUP FOR FOX C/O KIT
- WM308B 5" COIL OVER KIT FOR BILSTEIN SHOCKS
- WM308I 5" COIL OVER KIT FOR INTEGRA SHOCKS
- WM308IDA 5" COIL OVER KIT FOR INTEGRA (IDA)
- WM308QMT 5" COIL OVER KIT FOR QA1 MONO TUBE SHOCKS
- WM308QTT 5" COIL OVER KIT FOR QA1 TWIN TUBE SHOCKS
- WM308-RC REMOVABLE CUP EVERY KIT EXCEPT AFCO AND FOX
- WM308W WRENCH FOR COIL OVER KIT
- WM165BO 5" BEARING ONLY
- WM308A-435 AFCO C/O KIT WITH RR RAISED CUP
- WM308P-435 PENSKE C/O KIT WITH RR RAISED CUP
- WM308F-435 FOX C/O KIT WITH RR RAISED CUP
- WM308B-435 BILSTEIN C/O KIT WITH RAISED RR CUP
- WM308I-435 INTEGRA C/O KIT WITH RR RAISED CUP



Raised RR Spring Cup

This David Stremme inspired spring cup raises the spring up to enable you to run the RR shock bulb up and have trailing arm clearance. We changed the design to capture the spring by the OD to keep the spring linear through travel. This cup works with any 5/8" shaft shock or slider.

- WM435 RAISED SPRING CUP

Big Spring 5" Coil Over Adapter

Billet adapters convert 5" spring to 2 1/2" Coil over nuts. Available with Torrington bearing to eliminate spring twisting. Bearing also sold separately.

- WM165B COIL OVER ADAPTER WITH BEARING
- WM165BO 5" TORRINGTON BEARING & WASHERS ONLY
- WM165 COIL OVER ADAPTER ONLY



3" Tall Screw Jack Jam Nut

Designed to clear the upper control arm for easy positioning of your wrench.

- WM4910ST 3" TALL SCREW JACK JAM NUTS (SOLD AS PAIR)
- WM294T SLIC PIN QUICK RELEASE TOOL

Screw Jack Jam Nuts

A little piece of mind with our jams. Lightweight aluminum or steel design instead of a heavy hex nut. They come in 1" coarse and 1 1/8" fine. Uses 1 1/8" wrench.

- WM4910A ALUMINUM FOR 1" COARSE (SET OF 4)
- WM4910S STEEL FOR 1" COARSE (SET OF 4)
- WM491125A ALUMINUM FOR 1 1/8" FINE (SET OF 4)
- WM49750 3/4" STEEL COARSE JAMS (SET OF 4)

Short Spring Cup and Screw Jack

2 1/2" tall top cup, available with or without screw jack.

- WM304S-8 RR SHORT SPRING CUP WITH 8" SCREW JACK
- WM304S-11 RR SHORT SPRING CUP WITH 11" SCREW JACK
- WM304S-8-750 RR SHORT SPRING CUP AND 3/4" SCREW JACK 8" LONG
- WM304S-11-750 RR SHORT SPRING CUP AND 3/4" SCREW JACK 11" LONG
- WM304SC RR SHORT SPRING CUP ONLY
- WM304B-8 8" LONG 1" COARSE SCREW JACK ONLY
- WM304B-11 11" LONG 1" COARSE SCREW JACK ONLY
- WM304B-14 SCREW JACK BOLT 14" X 1"-8 COARSE
- WM304B-8-750 8" LONG 3/4" COARSE SCREW JACK ONLY
- WM304B-11-750 11" LONG 3/4" COARSE SCREW JACK ONLY
- WM304S-14 SHORT SPRING CUP (2-1/2") WITH 14" X 1"
- WM30ST-14 TALL SPRING CUP (6" TALL) WITH 14" X 1"

Tall Extended Spring Cup and Screw Jack

6" tall top cup available with or without screw jack to keep your spring cup in under travel.

- WM304T-8 LR EXTENDED SPRING CUP WITH 8" SCREW JACK
- WM304T-11 LR EXTENDED SPRING CUP WITH 11" SCREW JACK
- WM304T-8-750 LR EXTENDED SPRING CUP AND 3/4" SCREW JACK 8" LONG
- WM304T-11-750 LR EXTENDED SPRING CUP AND 3/4" SCREW JACK 11" LONG
- WM304TC LR EXTENDED SPRING CUP ONLY

5" Weld on Spring Cup

Fred Ryland inspired 2 1/2" tall spring cup with spring retainer bolts to help keep your spring from leaving its perch!

- WM284 WELD ON LOWER CUP

Clamp Ring for Spring Cup

Steel 1" wide clamp ring for a bolt on spring cup. You can weld the cup where you want on the clamp and have it removable. Many other applications for clamp rings also.

- WM200-23 CLAMP RING FOR SPRING CUP

Swivel Spring Cup

Our swivel cups will keep your springs happy when traveling by allowing rotation and angular alignment. Swivel cups are available for 5" and 5 1/2" diameter springs in 3 styles 2 1/2" short cup, 4" tall cup and our 2 1/2" drop bearing design to help the car gain side bite.

- WM285S 5" SWIVEL SPRING CUP 2 1/2" SHORT
- WM285T 5" SWIVEL SPRING CUP 4" TALL
- WM285D 5" SWIVEL SPRING CUP 2 1/2" DROP BEARING
- WM285S-5.5 5 1/2" SWIVEL SPRING CUP 2 1/2" TALL
- WM285T-5.5 5 1/2" SWIVEL SPRING CUP 4" TALL
- WM285D-5.5 5 1/2" SWIVEL SPRING CUP 2 1/2" DROP BEARING

Quick Release Swivel Cup and Screw Jack

Our bind free bearing swivel cups enhance spring rotation and angular alignment. They work with a variety of our screw jacks or can be mounted with a stud on the rear end side. Springs cups come off by simply pushing the SLIC pin™. This makes spring changes a breeze. SLIC Pin™ U.S. Patent number 6,872,039 & 7,147,420.

5" SPRING CUP OPTIONS WITH 1" COARSE SCREW JACK

- WM2884S SWIVEL 5" SPRING SHORT CUP (2 1/2" TALL) 4" LONG 1" SCREW JACK
- WM2884T SWIVEL 5" SPRING TALL CUP (4" TALL) 4" LONG 1" SCREW JACK
- WM2886S SWIVEL 5" SPRING SHORT CUP (2 1/2" TALL) 6" LONG 1" SCREW JACK
- WM2886T SWIVEL 5" SPRING TALL CUP (4" TALL) 6" LONG 1" SCREW JACK
- WM2886D SWIVEL 5" SPRING (2 1/2" DROP BEARING) CUP 6" LONG 1" SCREW JACK
- WM2889S SWIVEL 5" SPRING SHORT CUP (2 1/2" TALL) 9" LONG 1" SCREW JACK
- WM2889T SWIVEL 5" SPRING TALL CUP (4" TALL) 9" LONG 1" SCREW JACK
- WM2889D SWIVEL 5" SPRING (2 1/2" DROP BEARING) CUP 9" LONG 1" SCREW JACK

5" SPRING CUP OPTIONS WITH 3/4" SCREW JACK

- WM2888S-750 SWIVEL 5" SPRING CUP (2 1/2" TALL) 8" LONG SCREW JACK 3/4" COARSE
- WM2888T-750 SWIVEL 5" SPRING CUP (4" TALL) 8" LONG SCREW JACK 3/4" COARSE
- WM2888D-750 SWIVEL 5" SPRING CUP (2 1/2" DROP BEARING) 8" SCREW JACK 3/4" COARSE
- WM28810D-750 SWIVEL 5" SPRING CUP (2 1/2" DROP BEARING) 10" SCREW JACK 3/4" COARSE

5" SPRING CUP OPTIONS WITH 1 1/8" FINE THREAD SCREW JACK

- WM2884S-1.125 SWIVEL 5" SPRING CUP (2 1/2" TALL) 4" LONG 1 1/8" FINE SCREW JACK
- WM2884T-1.125 SWIVEL 5" SPRING CUP (4" TALL) 4" LONG 1 1/8" FINE SCREW JACK

5 1/2" SPRING CUP OPTIONS WITH 1" SCREW JACK

- WM2884S-5.5 SWIVEL 5 1/2" SPRING CUP (2 1/2" TALL) 4" LONG 1" SCREW JACK
- WM2884T-5.5 SWIVEL 5 1/2" SPRING CUP (4" TALL) 4" LONG 1" SCREW JACK
- WM2886S-5.5 SWIVEL 5 1/2" SPRING CUP (2 1/2" TALL) 6" LONG 1" SCREW JACK
- WM2886T-5.5 SWIVEL 5 1/2" SPRING CUP (4" TALL) 6" LONG 1" SCREW JACK
- WM2886D-5.5 SWIVEL 5 1/2" SPRING CUP (2 1/2" DROP BEARING) 6" LONG 1" SCREW JACK
- WM2889S-5.5 SWIVEL 5 1/2" SPRING CUP (2 1/2" TALL) 9" LONG 1" SCREW JACK
- WM2889T-5.5 SWIVEL 5 1/2" SPRING CUP (4" TALL) 9" LONG 1" SCREW JACK
- WM2889D-5.5 SWIVEL 5 1/2" SPRING CUP (2 1/2" DROP BEARING) 9" LONG 1" SCREW JACK

5 1/2" SPRING CUP OPTIONS WITH 3/4" SCREW JACK

- WM2888S-750-5.5 SWIVEL 5 1/2" SPRING CUP (2 1/2" TALL) 8" LONG 3/4" SCREW JACK
- WM2888T-750-5.5 SWIVEL 5 1/2" SPRING CUP (4" TALL) 8" LONG 3/4" SCREW JACK
- WM2888D-750-5.5 SWIVEL 5 1/2" SPRING CUP (2 1/2" DROP BEARING) 8" LONG 3/4" SCREW JACK
- WM28810D-750-5.5 SWIVEL 5 1/2" SPRING CUP (2 1/2" DROP BEARING) 10" LONG 3/4" SCREW JACK

SCREW JACKS ONLY

- WM2884B SCREW JACK 4" LONG 1" COARSE WITH SLIC PIN
- WM2886B SCREW JACK 6" LONG 1" COARSE WITH SLIC PIN
- WM2889B SCREW JACK 9" LONG 1" COARSE WITH SLIC PIN
- WM28810B SCREW JACK 10" LONG 1" COARSE WITH SLIC PIN
- WM28812B SCREW JACK 12" LONG 1" COARSE WITH SLIC PIN
- WM2888B-750 SCREW JACK 8" LONG 3/4" COARSE WITH SLIC PIN
- WM28810B-750 SCREW JACK 10" LONG 3/4" COARSE WITH SLIC PIN
- WM2884B-1.125 SCREW JACK 4" LONG 1 1/8" FINE WITH SLIC PIN
- WM2886B-1.125 SCREW JACK 6" LONG 1 1/8" FINE WITH SLIC PIN